

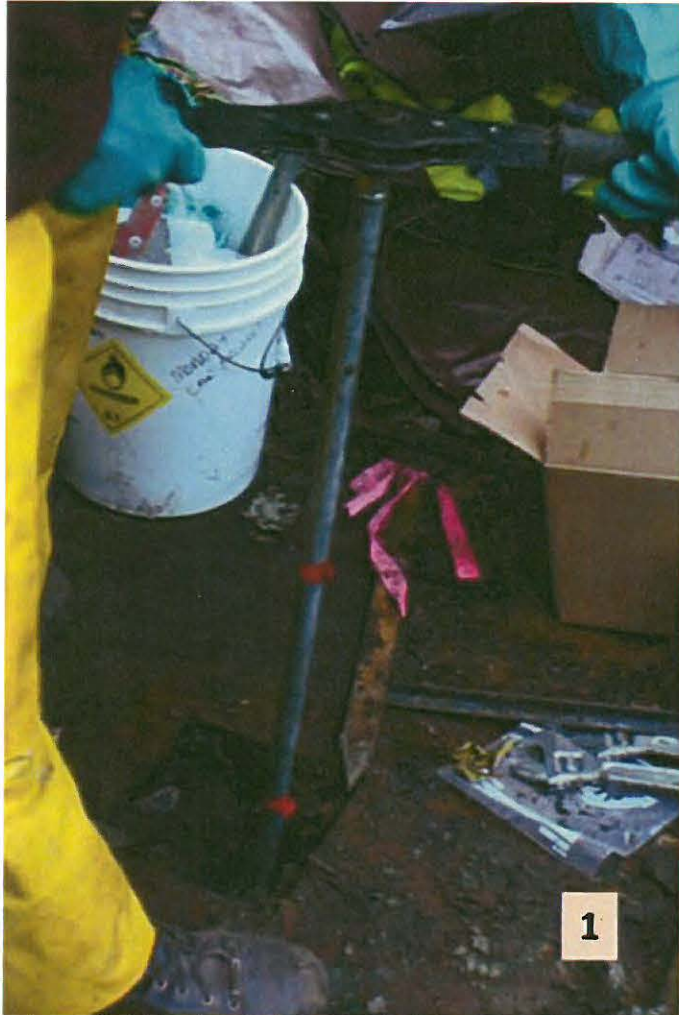
APPENDIX C

**Select Site Investigation Reports
(Provided on CD)**

Appendix D.3

Well Installation Pictures

Appendix D.3 - Well Installations



(1) Hand augering through platform access hole (2) Removing coring sediments (3) Saturated sediments in auger bit (4) Driller using soil sampler

Appendix D.3 - Well Installations



(1) Pre-packed screen around 0.010-inch slots on 2-inch PVC tubing (2) Placing two five-foot pre-packed screens (and 0.010-slots) into borehole (3) Well locking cap, lock and state well tag.

Appendix D.3 - Well Installations



(1) Well MW-30 ; DOE Well tag # APJ-049 (2) Well MW-31; DOE Well tag # APJ-050. Both pictures show augering platforms, wastewater discharge bucket, and auger sediment cuttings in plastic wrapping. Wells are locked with locking caps and locks.

Appendix D.3 - Well Installations



(1 & 2) Well MW-32; DOE Well tag # APJ-048. Pictures show augering platforms, wastewater discharge bucket, and auger sediment cuttings in plastic wrapping. Well is locked with locking caps and locks.