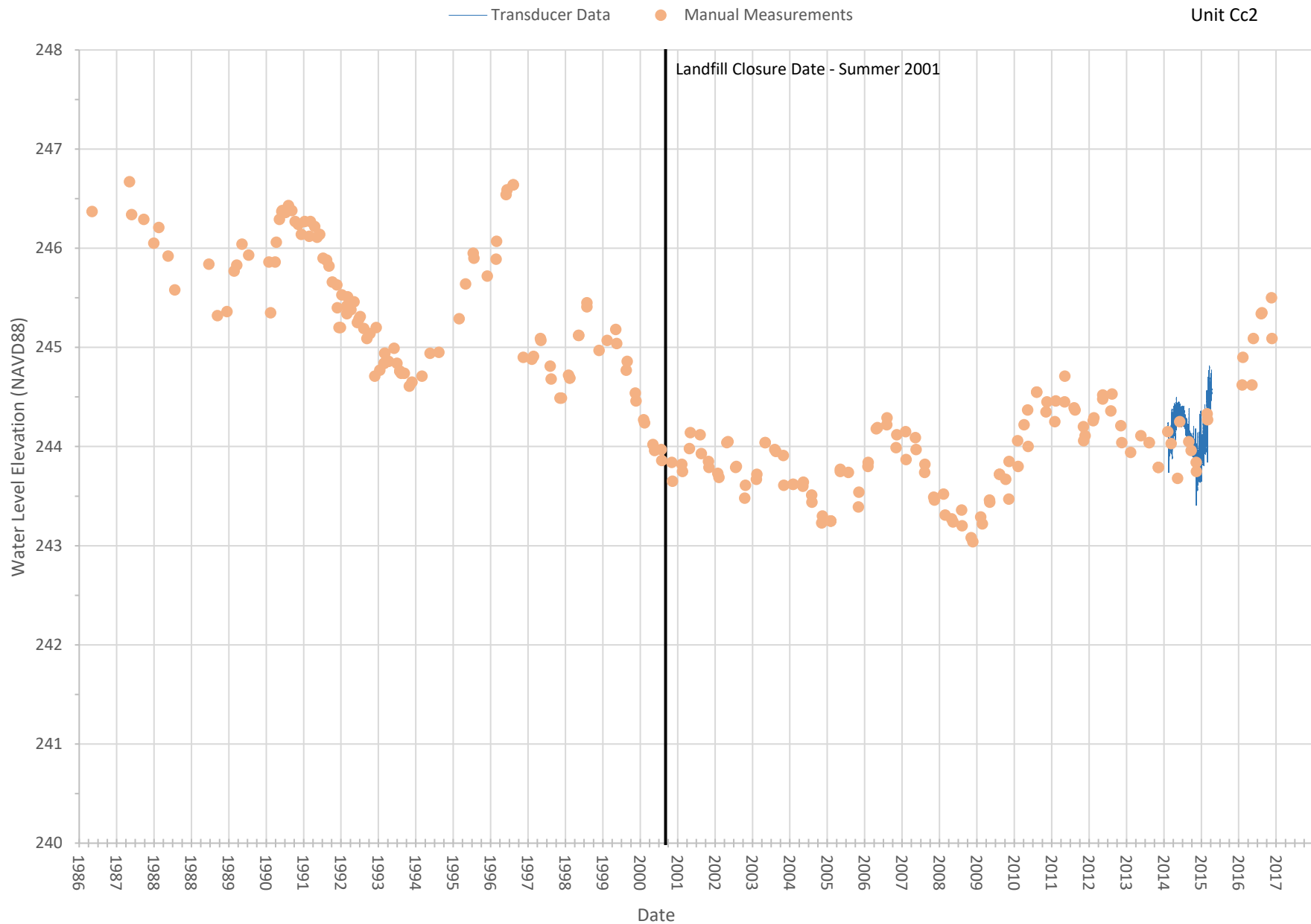
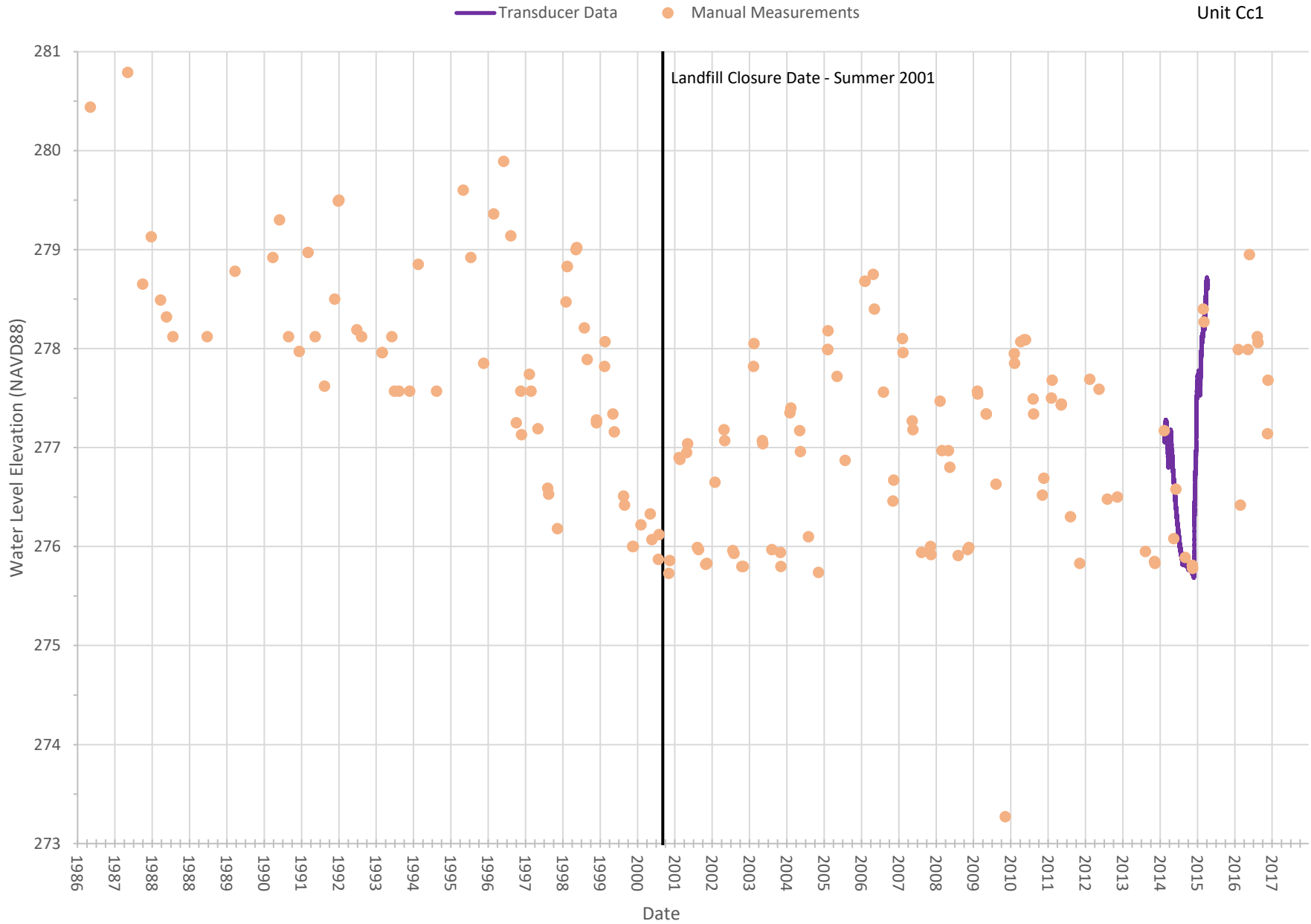


## **APPENDIX E**

### **Water Level Hydrographs from Select Wells**

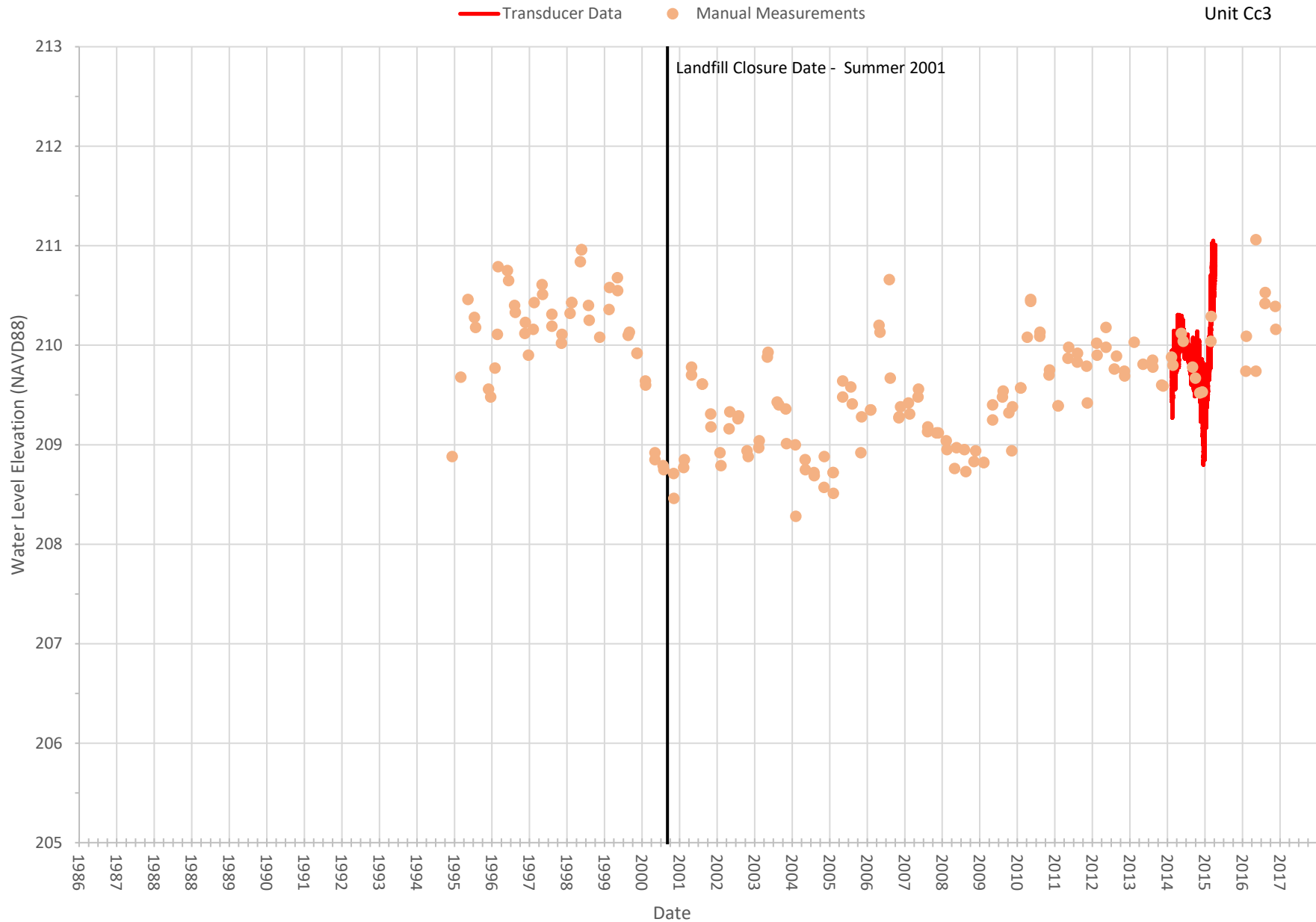




Unit Cc1

Landfill Closure Date - Summer 2001

Figure E.2

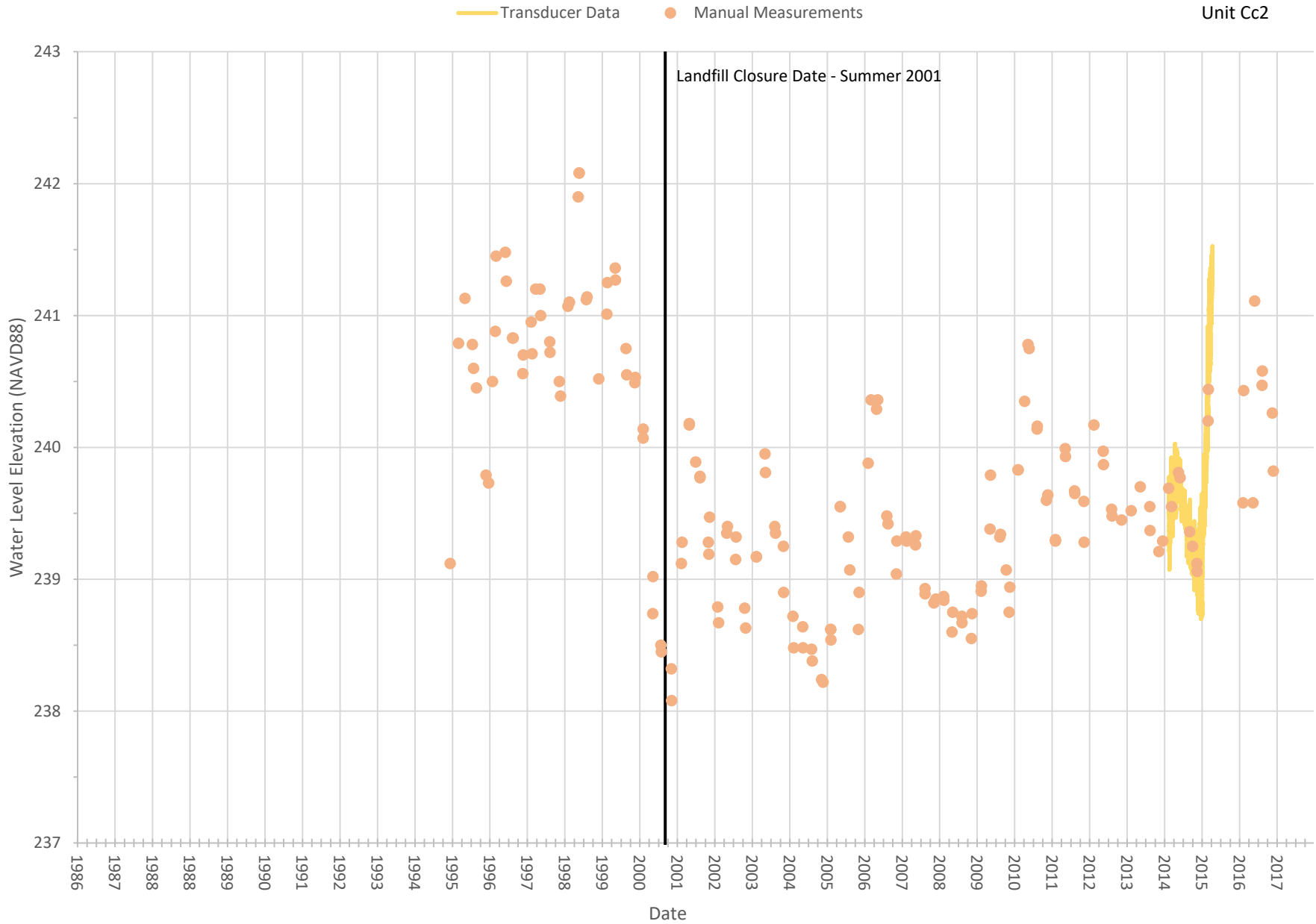


Unit Cc3

Landfill Closure Date - Summer 2001

**Figure E.3**

**MW-8 Hydrograph with Manual Measurements**

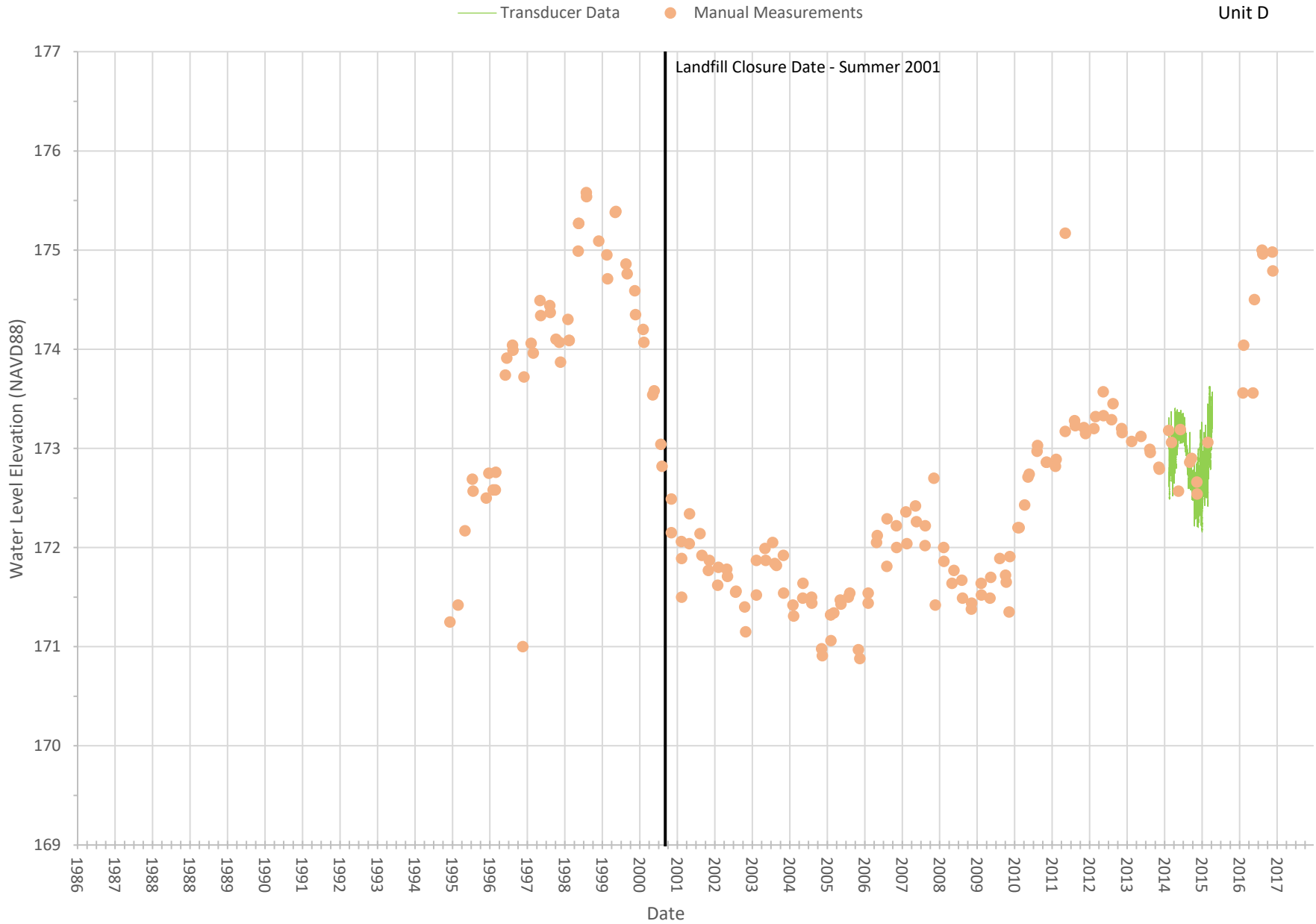


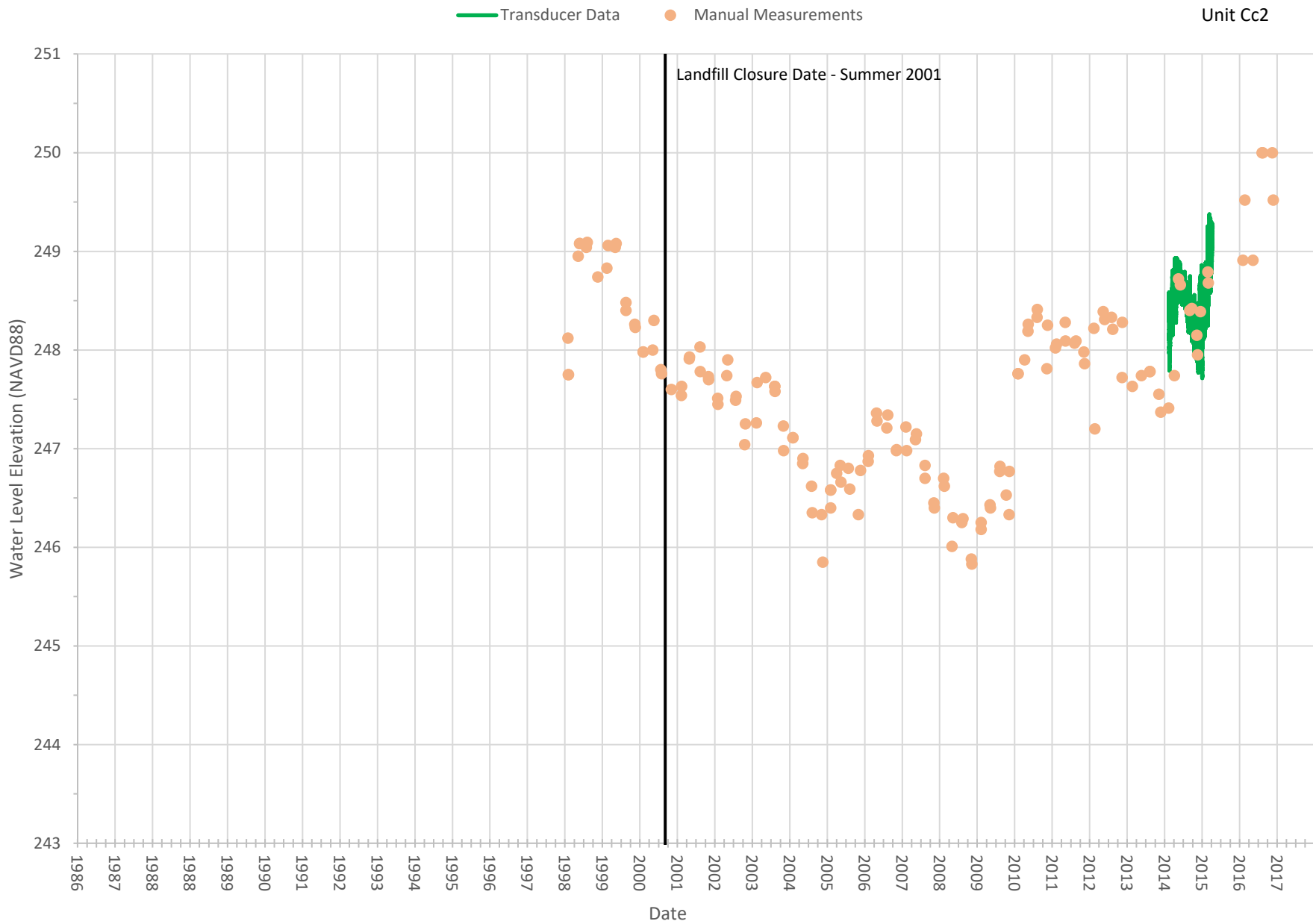
Unit Cc2

Landfill Closure Date - Summer 2001

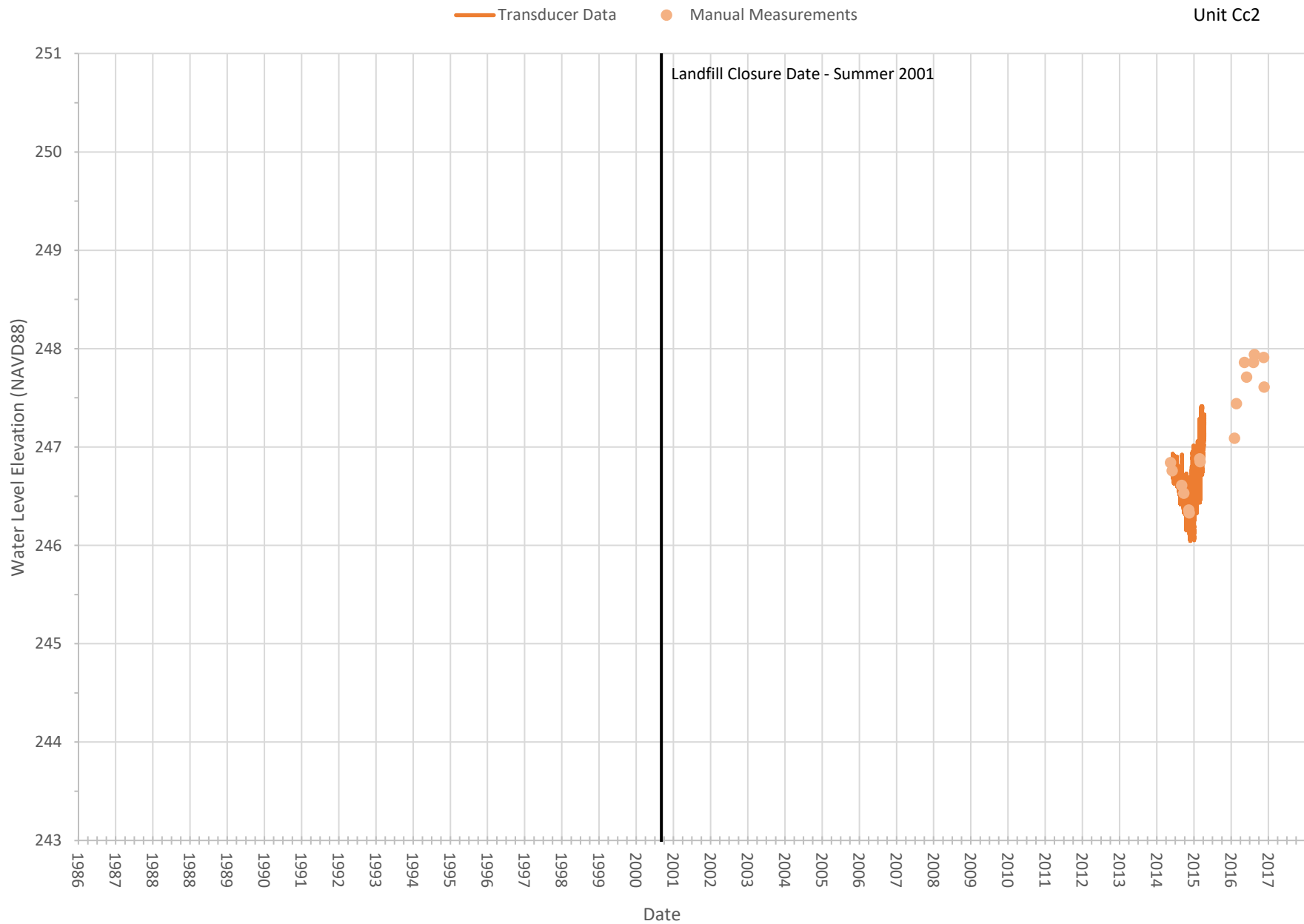
**Figure E.4**

**MW-9 Hydrograph with Manual Measurements**





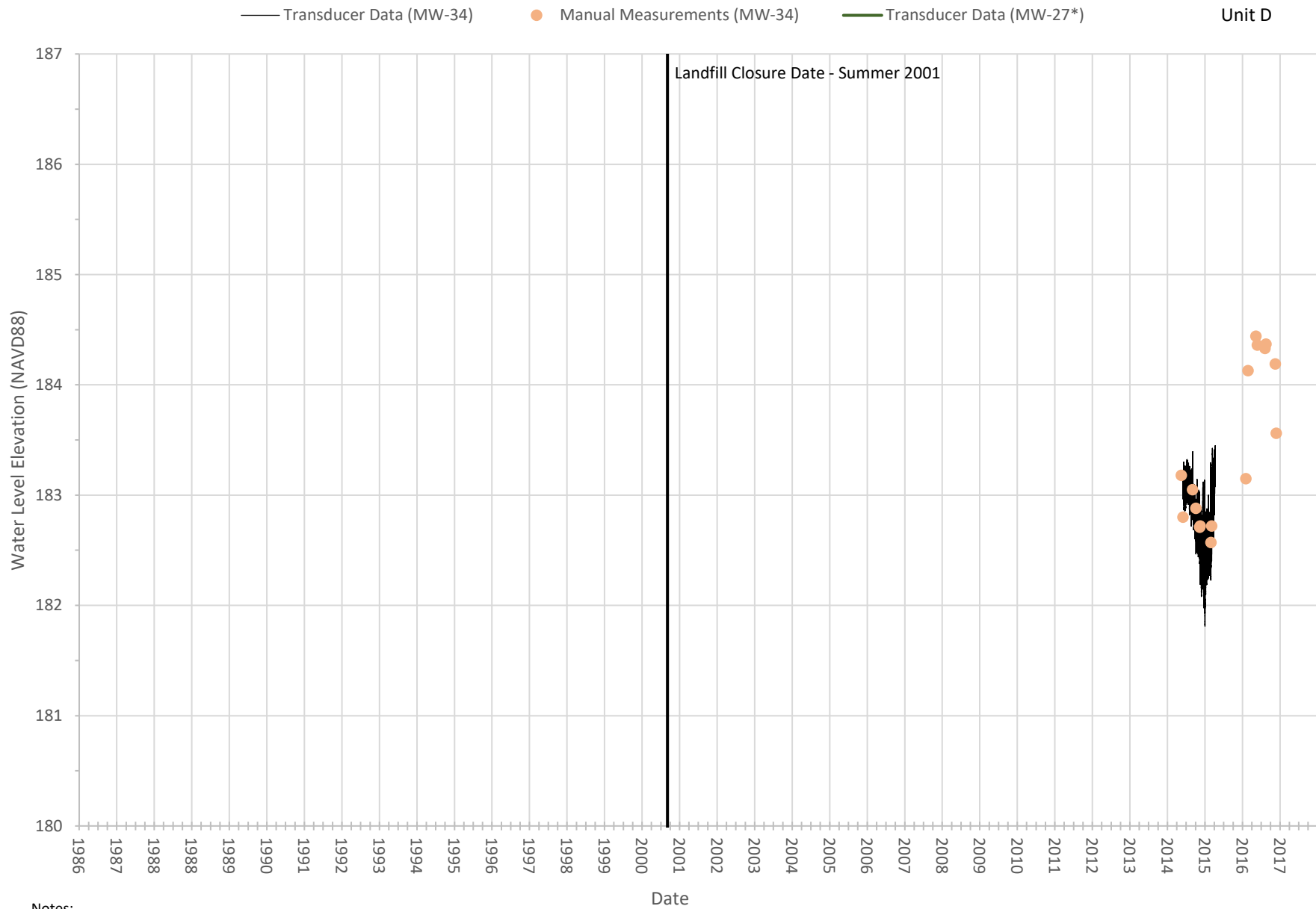
**Figure E.6**  
**MW-20 Hydrograph with Manual Measurements**



Unit Cc2

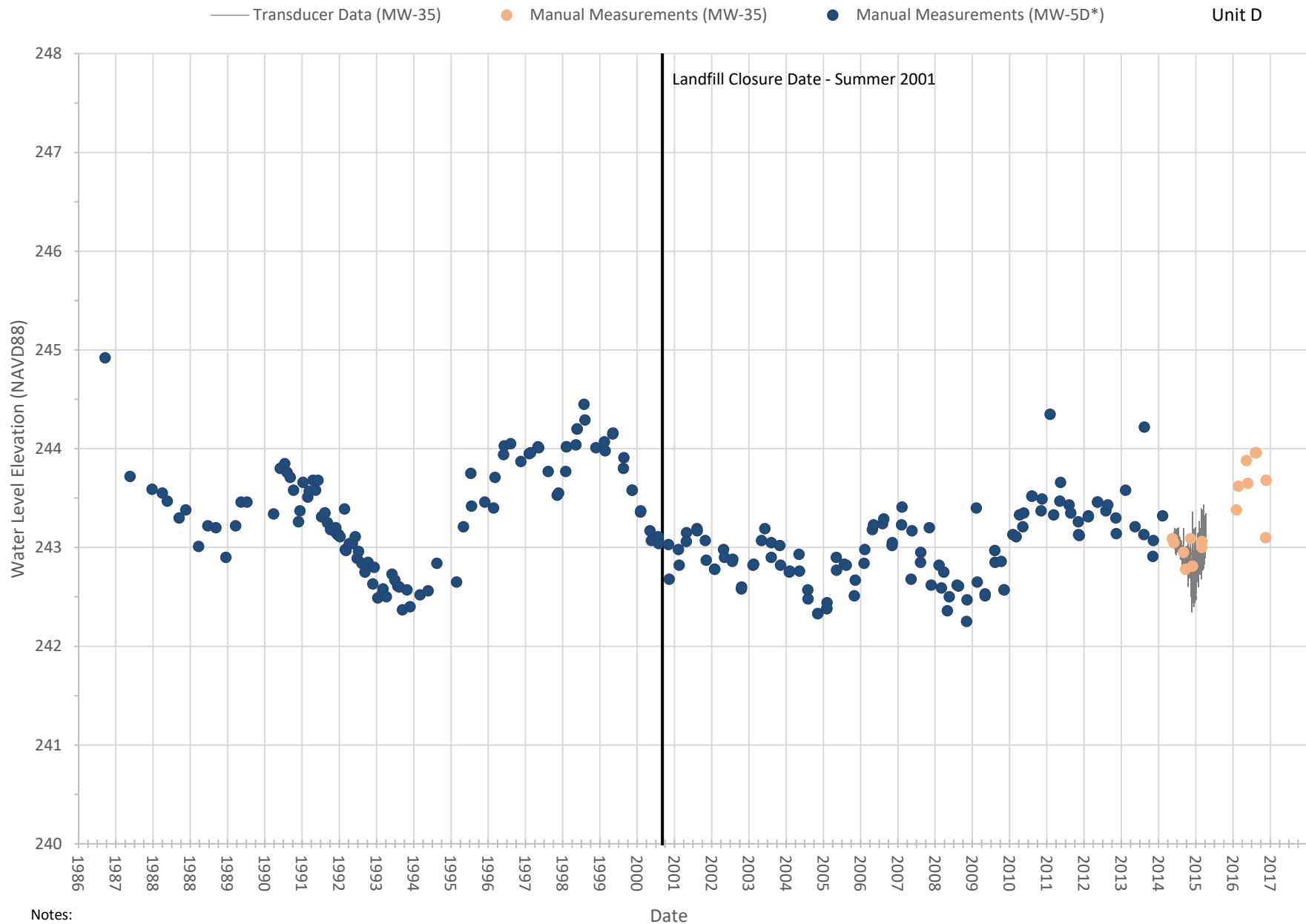
Landfill Closure Date - Summer 2001





Notes:

\*MW-27 was decommissioned and replaced with MW-34 due to suspect water elevations.



Notes:

\*MW-5D was originally surveyed using NGVD29 and converted to NAVD88

MW-35 was installed to replace abandoned well MW-5D

**Figure E.9**

**MW-5D and MW-35 Hydrograph with Manual Measurements**

Aspect Consulting

November 2020

V:\090057 ClosedLandfill\Deliverables\Vashon\Task 310\310.3.1 Remedial Investigation\Final\Appendices\_Final\App E Hydrographs\App E - Hydrographs

Remedial Investigation

Project No. 090057-310.3