

# Kimberly Clark Worldwide, Inc. Site



## Comments accepted:

March 11 - April 12, 2021

## How to comment:

Online at:

<http://tcp.ecology.commentingut.com/?id=MruGU>

Or by mail to:

Andrew Kallus, Site Manager  
PO Box 47600  
Olympia, WA 98504-7600  
*For more information, contact:*  
Phone: 360-407-7324  
[andrew.kallus@ecy.wa.gov](mailto:andrew.kallus@ecy.wa.gov)

## Site info:

<https://apps.ecology.wa.gov/gsp/Sitepage.aspx?csid=2569>

Facility Site ID: 9  
Site Cleanup ID: 2569

A public meeting will be held if at least ten people request one. If a hearing is requested, Ecology will determine the appropriate response under Washington's Stay Home, Stay Healthy order.

## Ecology wants your input!

From March 11 through April 12, 2021, you are invited to review and share your feedback on the latest cleanup planning documents for the Kimberly-Clark Worldwide, Inc. site, named after the former mill site in Everett, Washington.

## These draft cleanup documents are available for public comment:

- **Amended Agreed Order**  
This is a legal agreement that describes who is responsible for the contamination and what they must do to clean it up.
- **Updated Public Participation Plan**  
This outlines Ecology's process and opportunities for public input throughout cleanup at this site.
- **State Environmental Protection Act (SEPA) checklist and determination**  
This is an assessment used to determine whether the proposed cleanup activities are likely to have negative impacts on people or the environment. The Port of Everett leads the process of developing these SEPA documents and will manage comments on them. Look inside for information about how to comment on SEPA documents for this project.

You can find more details about these documents and background on the cleanup site inside.

## Stay involved!

For project updates and notice of future public comment opportunities for this site, contact Megan MacClellan at [megan.macclellan@ecy.gov](mailto:megan.macclellan@ecy.gov) to be added to our email list for the Kimberly-Clark site.

## Washington State's coronavirus response

While Washington's Stay Home, Stay Healthy order is in effect, Ecology is not hosting in-person public meetings or supporting physical document repositories. Documents for review will be available online only. If you need access to a hard copy document or have other questions, please contact Megan MacClellan at 360-688-3730.

Site Photos



Port Gardner Bay shoreline after interim cleanup.



Looking north over Port Gardner Bay.



A worker stands on the site after interim action cleanup.



The site filled in with clean dirt and sand, one step in the cleanup process.

Site Background

The Kimberly-Clark Worldwide, Inc. (Kimberly-Clark) site is located at 2600 Federal Avenue in Everett, Snohomish County. It includes nearly 56 acres of uplands and 12 acres of tidelands. The in-water area next to the site is within Everett's East Waterway and is being addressed under a separate cleanup agreement.

The property was first developed in the early 1900s and was used for pulp and paper manufacturing from 1931 to 2012. Other uses included bulk petroleum storage and sawmilling. All manufacturing operations at the facility stopped in 2012, and the former structures were demolished with the exception of the warehouse building and wastewater treatment facilities.

Completed Cleanup Actions

In 2012, Ecology entered into a formal legal agreement called an Agreed Order with Kimberly-Clark for the upland portion of their property. Under that Agreed Order, Kimberly-Clark conducted a partial cleanup called an interim action to address contamination found after the mill was demolished. They removed about 39,000 tons of contaminated soil and more than 6,000 gallons of petroleum-contaminated water.

Kimberly-Clark conducted a second interim action in 2020 as part of an amendment to the Agreed Order. It included removing nearly 18,000 tons of contaminated soil, plugging inactive groundwater pipes to prevent contaminated water from reaching East Waterway, removing and treating contaminated groundwater, and removing over 200,000 tons of crushed material from previous building demolition.

Draft Amended Agreed Order

In 2019, Kimberly-Clark sold most of the property to the Port of Everett, so the 2012 Agreed Order has been amended a second time to add the Port of Everett as a Potentially Liable Person for cleanup work. The Amended Order also outlines the scope of work for a third interim action in Exhibit J. The interim action activities include:

- Add clean, compacted dirt to increase the slope of the shoreline to help with stormwater drainage, surface water infiltration, and prepare the site for additional surface treatment.
- Add a cap of pavement and gravel to prevent exposure to any remaining contaminated soil and reduce the amount of water that can leach through the soil.
- Install utilities such as power, water, and sewer to minimize future disturbance of the cap.
- Reconstruct existing outfalls A and M for the new stormwater system.
- Manage contaminated soil and groundwater during construction.

## Document review locations

### Ecology's Kimberly-Clark website:

Find site documents online anytime.

<https://apps.ecology.wa.gov/gsp/Sitepage.aspx?csid=2569>

**In-person document review is not currently available.** You can review documents at these locations when they re-open to the public:

Everett Public Library  
2702 Hoyt Avenue  
Everett, WA 98201  
(425) 257-8000

Ecology Headquarters  
300 Desmond Drive SE  
Lacey, WA 98503  
(360) 407-7224  
Hours: By appointment

### Questions about accessing information?

Contact Megan MacClellan:  
(360) 688-3730  
[megan.macclellan@ecy.wa.gov](mailto:megan.macclellan@ecy.wa.gov)

## SEPA Checklist and MDNS

The State Environmental Policy Act (SEPA) is designed to ensure that governments consider environmental impacts when they make decisions. The Port of Everett used a checklist to identify the potential environmental impacts of their proposed work on the site. After completing this checklist, the Port determined that their proposed work is not likely to negatively impact people and the environment, as long as certain protective measures are used. This is called a Mitigated Determination of Non-Significance, or MDNS. Ecology reviews these documents, but the Port of Everett leads and manages the SEPA process for this project. To review and comment on the SEPA documents, go to the Port of Everett's webpage:

<https://www.portofeverett.com/environment/sepa.php#outer-5074sub-5101>

## Draft Public Participation Plan

Ecology updated its Public Participation Plan, which outlines how you can learn about cleanup at the site and provide input. We have updated some of the narrative and provided new contact information.

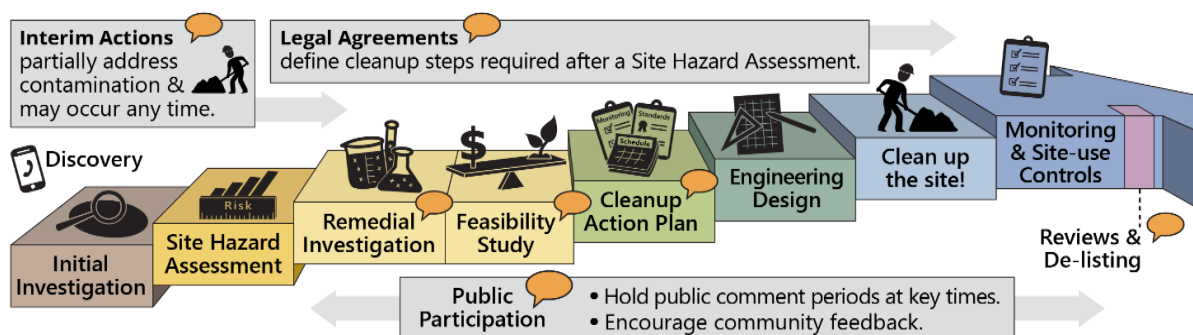
## Why This Cleanup Matters

In 2007, Washington State established the Puget Sound Initiative to protect and restore Puget Sound. Several areas in the Sound have been identified as high priority cleanup areas as part of this Initiative, including Port Gardner. Other areas include Port Gamble, Dumas Bay, Padilla and Fidalgo Bays, Port Angeles, and Budd Inlet. This work entails cleaning up 50-60 sites within one-half mile of the Sound. These cleanup actions will help to reduce pollution and restore habitat in Puget Sound.

## What Happens Next?

Once the public comment period ends, Ecology will review, consider, and respond to all comments received. The Amended Agreed Order and Public Participation Plan may be modified based on your comments. As key cleanup plans are developed in the future, you will be notified of additional public comment periods.

## Steps in Ecology's Cleanup Process





DEPARTMENT OF  
**ECOLOGY**  
State of Washington

Toxics Cleanup Program  
Attention: Andrea Flaherty  
PO Box 47600  
Olympia, WA 98504-7600

## Join the discussion about cleanup!

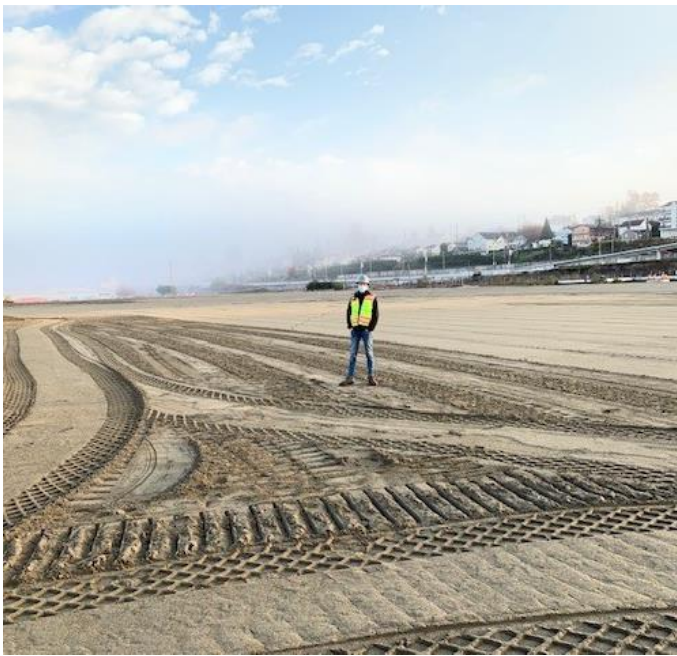


Photo: Aspect Consulting, 2020.

### **Kimberly-Clark Worldwide, Inc. Site**

**Port Gardner, Snohomish County, WA**  
Ecology seeks public comment on a draft Amended Agreed Order, draft Public Participation Plan, and SEPA documents.

### **Public Comment Periods:**

SEPA documents: March 11 – March 25  
*SEPA comments received through the Port of Everett*

All other documents: March 11 – April 12, 2021

### **Ecology's Kimberly-Clark website:**

<https://apps.ecology.wa.gov/gsp/Sitepage.aspx?csid=2569>

To request an ADA accommodation, contact Ecology by phone at 360-407-7182 or email at [Megan.MacClellan@ecy.wa.gov](mailto:Megan.MacClellan@ecy.wa.gov), or visit <https://ecology.wa.gov/accessibility>. For Relay Service or TTY call 711 or 877-833-6341.