



DEPARTMENT OF  
**ECOLOGY**  
State of Washington

**Public Participation Plan**  
**Block 37 Cleanup Site**  
**600 Westlake Avenue North, Seattle WA.**

---

*Facility Site ID: 46445373*  
*Cleanup Site ID: 6134*

March 2021

# Publication and Contact Information

This plan is available on the Department of Ecology's website at:  
[Ecology's Block 37 Webpage](#)

For more information contact:

Northwest Regional Office  
3190 160<sup>th</sup> Ave SE  
Bellevue, WA 98008

Washington State Department of Ecology – [Department of Ecology Homepage](#)

- Headquarters, Olympia 360-407-6000
- Northwest Regional Office, Bellevue 425-649-7000
- Southwest Regional Office, Olympia 360-407-6300
- Central Regional Office, Union Gap 509-575-2490
- Eastern Regional Office, Spokane 509-329-3400

*To request ADA accommodation including materials in a format for the visually impaired, call Ecology at (360) 407-6831 or visit [Department of Ecology's Accessibility Homepage](#). People with impaired hearing may call Washington Relay Service at 711. People with speech disability may call TTY at 877-833-6341.*

# **Public Participation Plan**

---

## **Block 37 Cleanup Site**

Toxics Cleanup Program  
Northwest Region  
Washington State Department of Ecology  
Bellevue, Washington

---

March 2021

*This page is purposely left blank*

# Table of Contents

Public Involvement in Contamination Cleanup .....	1
Site contacts .....	1
Ecology .....	1
PLP .....	1
Public Participation Grants .....	2
Washington’s Cleanup Laws .....	2
Model Toxics Control Act (MTCA) .....	2,3
State Environmental Policy Act .....	4
Site History .....	4
Contamination .....	5
Cleanup plans .....	5
Why this site matters .....	6
Community Profile .....	6
EPA Environmental Justice Screens of community .....	7-13
Public Participation Activities .....	14
How we share information with the community .....	14
Postal mailing list .....	14
Site Register .....	15
Newspaper display ads or legal notices .....	15
Email lists .....	15
Ecology’s website and social media platforms .....	15
Document repositories .....	16
Signs around the cleanup site .....	16
How to share information with us .....	16
Public comment periods .....	16
Public events .....	17
Plan Amendments .....	17

## Public Involvement in Contamination Cleanup

The Washington State Department of Ecology (Ecology) developed this public participation plan (plan) in cooperation with Phillips 66 Company and City Investors XI LLC, the parties responsible for cleanup at the Block 37 Cleanup Site (Site). The purpose of the plan is to promote meaningful community involvement during cleanup.

The plan describes ways Ecology will inform the public about contamination investigations and cleanup options throughout the cleanup process. Ecology encourages the public to learn about and get involved in decision-making opportunities. This plan identifies how and when the public can get involved during different stages of the investigation and cleanup of contamination.

This plan was developed for the Agreed Order for the Block 37 Site.

### Site contacts

To be included in the Site record, comments about the cleanup process must be submitted during comment periods. Questions and informal comments or information about the site's history are welcome anytime.

#### Ecology

Northwest Regional Office  
3190 160<sup>th</sup> Ave SE  
Bellevue WA 98008

Tena Seeds, Project Manager  
[tena.seeds@ecy.wa.gov](mailto:tena.seeds@ecy.wa.gov)  
425-457-3143

Brad Petrovich, Public Involvement Mgr.  
[brad.petrovich@ecy.wa.gov](mailto:brad.petrovich@ecy.wa.gov)  
425-533-5537

#### Potentially Liable Persons (PLP)

Phillips 66 Company  
Ed Ralston-Program Manager  
76 Broadway  
Sacramento, CA 95818  
[Ed.C.Ralston@p66.com](mailto:Ed.C.Ralston@p66.com)  
916-558-7633

City Investors XI LLC  
Brandon Morgan-Director  
505 5<sup>th</sup> Avenue S., Suite 900  
Seattle, WA 98104  
[BrandonMO@vulcan.com](mailto:BrandonMO@vulcan.com)  
206-342-2000

## Public Participation Grants

Grants may be available to neighborhood committees, non-profits, and other groups interested in the Site. For contaminated sites, these funds can be used to:

- Hire an expert to help interpret technical information<sup>1</sup>
- Conduct activities that enhance the public's understanding of, and participation in, the cleanup process

For more information about public participation grants, please contact Lynn Gooding at 360-407-6062 or [lynn.gooding@ecy.wa.gov](mailto:lynn.gooding@ecy.wa.gov), or visit the [Public Participation Grant website](#).<sup>2</sup>

## Washington's Cleanup Laws

Ecology uses the Model Toxics Control Act (MTCA) and accompanying regulations for cleanup activities. This plan is required under MTCA, a law that passed in 1989. MTCA provides guidelines for contaminated site cleanup in Washington State and sets standards to ensure the cleanup protects human health and the environment.

## Model Toxics Control Act (MTCA)

MTCA began as a grassroots citizen's initiative in 1988, and started the process of systematically cleaning up contaminated sites in Washington. Under MTCA, a current or past property owner or operator may be held responsible for cleaning up contamination on, or coming from, their property to standards that are safe for human health and the environment.

Ecology enacts MTCA and oversees cleanups in the state and issues regulations and guidance governing those cleanups. The regulations are found in [Chapter 173-340 Washington Administrative Code \(WAC\)](#).<sup>3</sup> Ecology investigates reports of property contamination, and if the contamination is seen as a significant threat to human health or the environment, the contaminated property is placed on the Confirmed and Suspected Contaminated Sites List for further assessment. The cleanup process can begin at any time after a release of a hazardous substance to the environment has been discovered.

---

<sup>1</sup> Ecology currently does not have a citizen technical advisor for providing technical assistance to citizens on issues related to the investigation and cleanup of the site.

<sup>2</sup> [ecology.wa.gov/About-us/How-we-operate/Grants-loans/Find-a-grant-or-loan/Public-participation-grants](https://ecology.wa.gov/About-us/How-we-operate/Grants-loans/Find-a-grant-or-loan/Public-participation-grants)

<sup>3</sup> <https://apps.ecology.wa.gov/publications/publications/9406.pdf>

Public participation is an important part of cleanup under the MTCA process. Participation needs are assessed at each cleanup site according to the level of public interest and the degree of risk posed by the contamination. Individuals who live near the site, community groups, businesses, government, other organizations, and interested parties have the opportunity to get involved by commenting on the cleanup process. Under MTCA, the cleanup process generally includes five phases. Each phase has an opportunity for the public to have input.

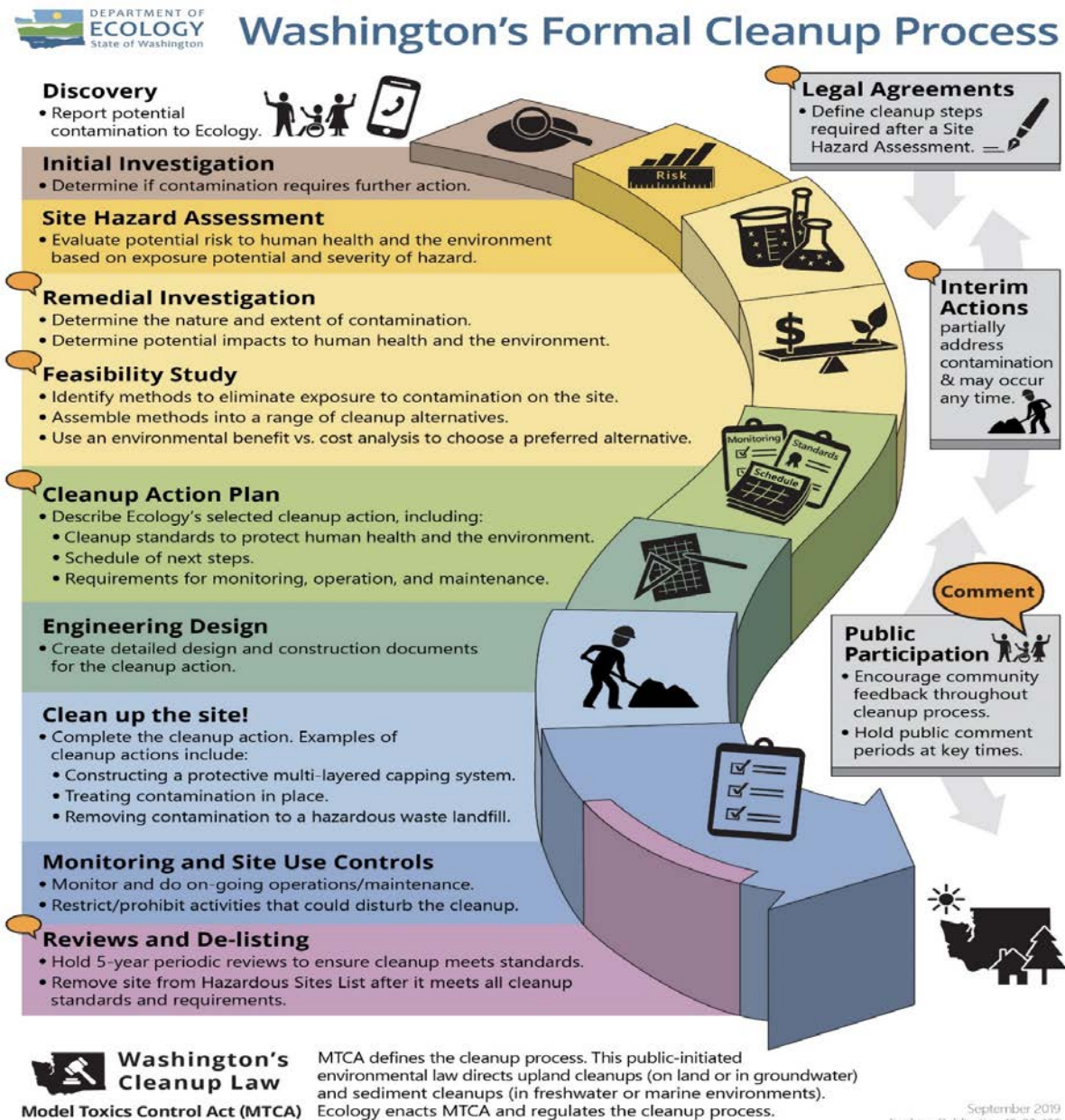


Figure 1: Steps in Washington's Cleanup Process<sup>4</sup>

<sup>4</sup> <https://apps.ecology.wa.gov/publications/SummaryPages/1909166.html>



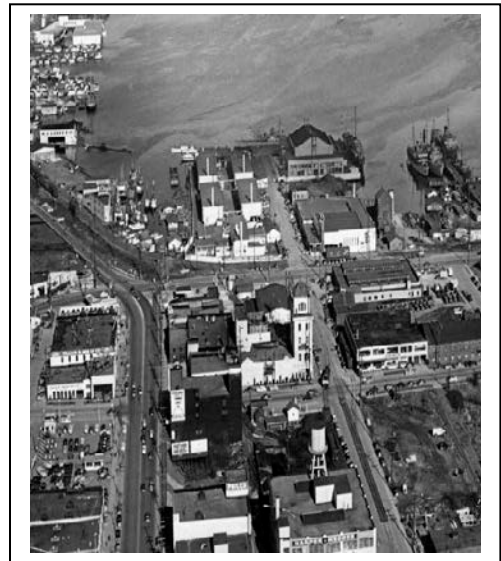
## State Environmental Policy Act

MTCA cleanups also require evaluation under the State Environmental Policy Act (SEPA; [Chapter 197-11 WAC](#)<sup>5</sup>). Under SEPA, the potential for significant adverse environmental impacts from a project or action must be evaluated by state and local agencies when making decisions. This evaluation is subject to public review and comment in parallel with cleanup documents.

## Site History

The Block 37 property (Property) is located in Seattle's South Lake Union area. It is made up of several parcels generally located at 600-630 Westlake Avenue North, and is bordered by Westlake, Mercer Street, Valley Street, and Terry Avenue North. City Investors XI LLC is the current owner of the Property, and Phillips 66 Company previously owned two parcels in the southern portion of the Block 37 Property.

Historical uses of the Property date back to the late 1800s. A lumber mill, creamery, and brewery operated there until the early 1930s. A railroad occupied the northeast corner from the 1910s to 2005. A retail gasoline service station operated on the northwest portion from about 1930 to the mid-1960s. A service garage operated on the northern portion from 1971 to 2002. A second retail and automobile service station operated on the southwest portion from about 1965 to 2008.



No permanent structures are currently on the Property. The southern portion is mostly covered with gravel and used for temporary site offices, equipment and materials staging, and temporary dewatering and treatment facilities for nearby redevelopment projects.

The northern portion is paved and mostly used as a parking lot, with some additional equipment and materials staging.

<sup>5</sup> <https://apps.leg.wa.gov/wac/default.aspx?cite=197-11>

## Investigation & Contamination

Numerous environmental investigations have been done on the Property and adjacent rights-of-way since 1980. These have documented the following hazardous substances in soil and/or groundwater in amounts that exceed cleanup levels established under MTCA.

- total petroleum hydrocarbons as gasoline;
- total petroleum hydrocarbons as diesel and oil;
- benzene, toluene, ethylbenzene, and total xylenes;
- naphthalene;
- polycyclic aromatic hydrocarbons;
- total lead;
- methyl tertiary butyl ether; and
- dichloroethene and vinyl chloride.



Several independent cleanups have been done on the Property and adjacent rights-of-way to address some of the contamination at the Site. These have included excavation and offsite disposal of petroleum contaminated soil, recovery and removal of liquid petroleum hydrocarbons, and implementation of soil vapor extraction and air sparging technologies.



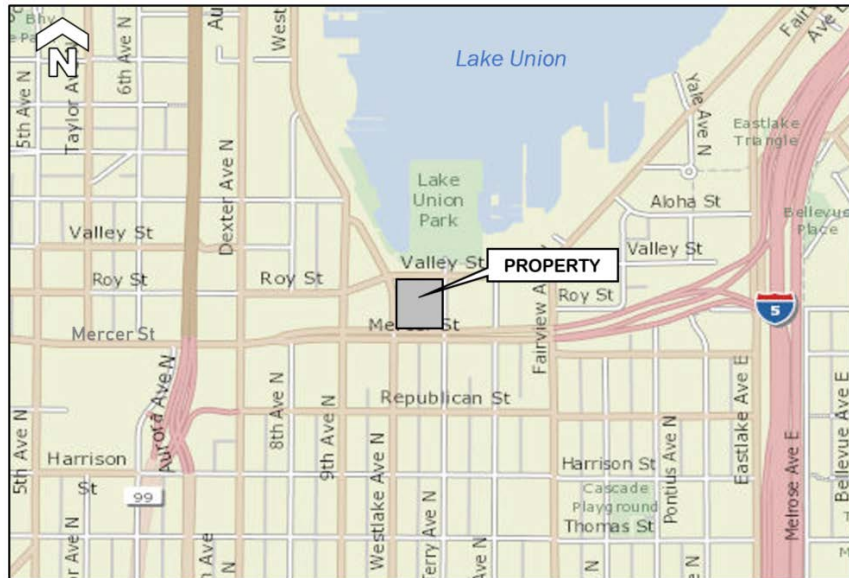
## Cleanup plans

As of March 29, 2021 Ecology will conduct a 30-day public comment period on the Agreed Order (legal agreement) and Public Participation Plan. The Agreed Order directs the liable parties to investigate environmental conditions, evaluate cleanup alternatives, conduct interim cleanup actions (if necessary), and develop a cleanup action plan for the Site.

Should any comments result in significant changes to these documents, revised versions will be available for review during a new comment period. If there are no public comments that require significant changes to the documents, then the documents will be signed, if applicable, and considered final. The cleanup process will then move forward.

## Why this site matters

The Block 37 Site is part of the South Lake Union neighborhood, which is located next to downtown Seattle and near Lake Union to the north. This area has a long history of industrial and commercial activities which caused contamination of the soil and groundwater. Currently, this area is undergoing extensive redevelopment as new buildings are constructed for commercial and residential use. Ecology is working with property owners to clean up contamination present at the Site and other nearby sites to reduce impacts to human health and the environment.



## Community Profile

The Environmental Protection Agency (EPA) has developed a new environmental justice (EJ) mapping and screening tool called [EJSCREEN](https://ejscreen.epa.gov/mapper/index.html)<sup>6</sup>. It is based on nationally consistent data and an approach that combines environmental and demographic indicators in maps and reports. Ecology uses this information to tailor its communications to the needs of particular communities, including: develop language translations, identify the need for interpreters, and generate other information for the community. Ecology translates materials like factsheets into languages that are spoken by 5 percent or more of the local community. In this case the data indicates that no language other than English meets that threshold. However as a best practice in the South Lake Union area, Ecology is translating factsheets in to Spanish and Chinese (Mandarin), and will do so here as well. When public meetings are needed, or requested by 10 or more persons during a public comment period, Ecology will provide interpreter services in those languages.

---

<sup>6</sup> <https://ejscreen.epa.gov/mapper/index.html>



**EJSCREEN Report (Version 2020)**

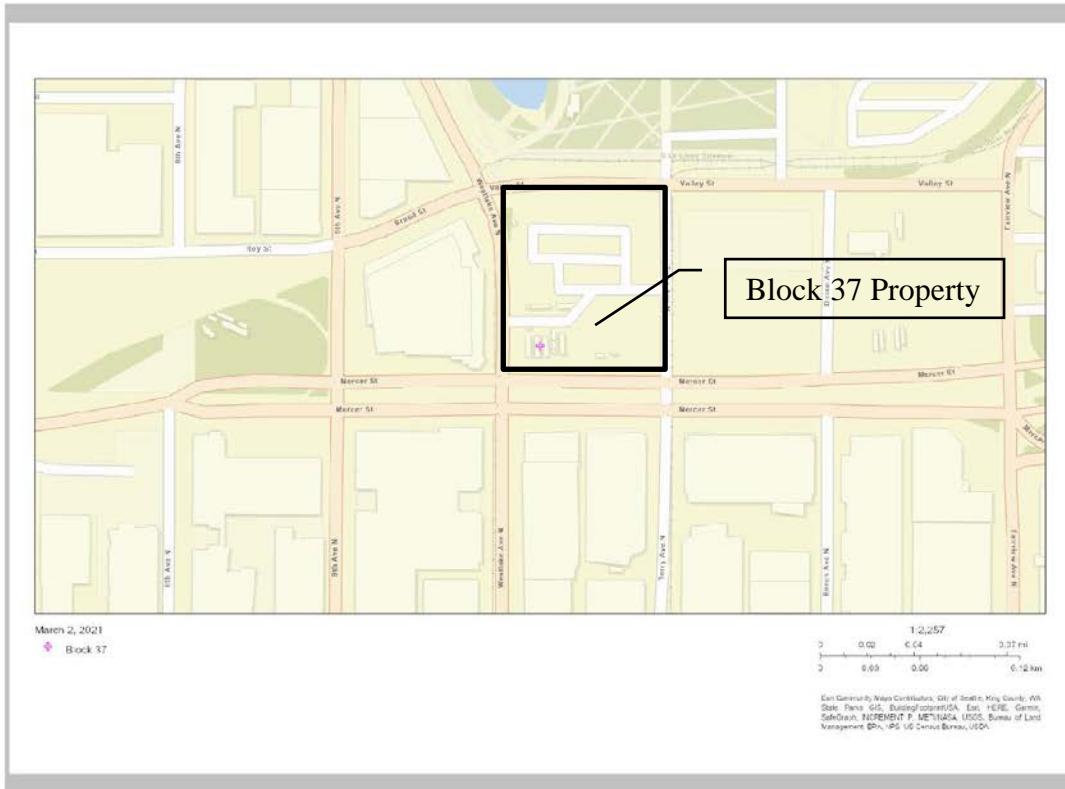


1 mile Ring Centered at 47.624898,-122.338144, WASHINGTON, EPA Region 10

Approximate Population: 69,087

Input Area (sq. miles): 3.14

Block 37



Sites reporting to EPA	
Superfund NPL	0
Hazardous Waste Treatment, Storage, and Disposal Facilities (TSDF)	8



EJSCREEN Report (Version 2020)



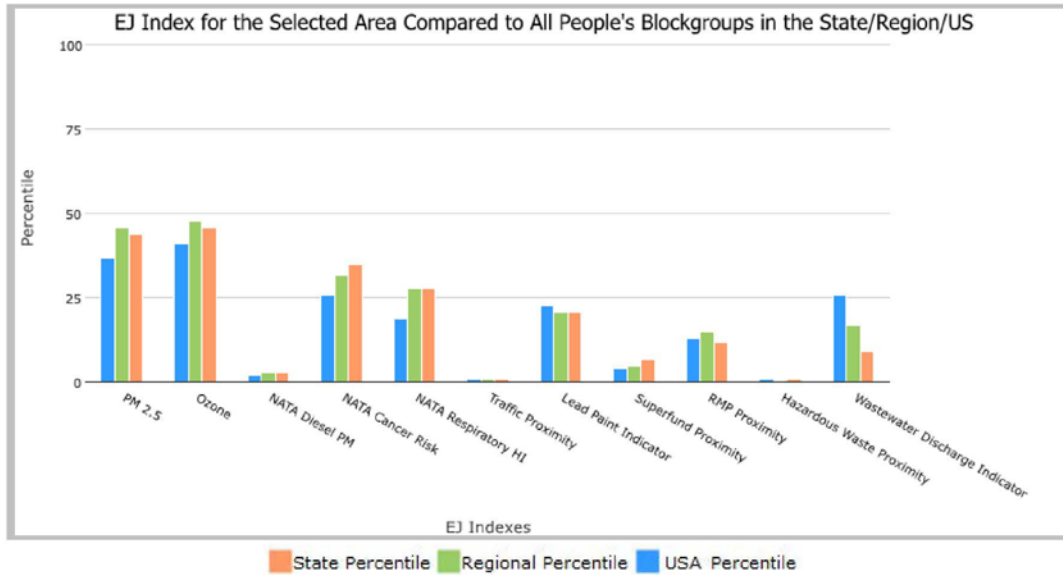
1 mile Ring Centered at 47.624898,-122.338144, WASHINGTON, EPA Region 10

Approximate Population: 69,087

Input Area (sq. miles): 3.14

Block 37

Selected Variables	State Percentile	EPA Region Percentile	USA Percentile
<b>EJ Indexes</b>			
EJ Index for PM2.5	44	46	37
EJ Index for Ozone	46	48	41
EJ Index for NATA <sup>*</sup> Diesel PM	3	3	2
EJ Index for NATA <sup>*</sup> Air Toxics Cancer Risk	35	32	26
EJ Index for NATA <sup>*</sup> Respiratory Hazard Index	28	28	19
EJ Index for Traffic Proximity and Volume	1	1	1
EJ Index for Lead Paint Indicator	21	21	23
EJ Index for Superfund Proximity	7	5	4
EJ Index for RMP Proximity	12	15	13
EJ Index for Hazardous Waste Proximity	1	0	1
EJ Index for Wastewater Discharge Indicator	9	17	26



This report shows the values for environmental and demographic indicators and EJSCREEN indexes. It shows environmental and demographic raw data (e.g., the estimated concentration of ozone in the air), and also shows what percentile each raw data value represents. These percentiles provide perspective on how the selected block group or buffer area compares to the entire state, EPA region, or nation. For example, if a given location is at the 95th percentile nationwide, this means that only 5 percent of the US population has a higher block group value than the average person in the location being analyzed. The years for which the data are available, and the methods used, vary across these indicators. Important caveats and uncertainties apply to this screening-level information, so it is essential to understand the limitations on appropriate interpretations and applications of these indicators. Please see EJSCREEN documentation for discussion of these issues before using reports.

March 01, 2021

1/3



**EJSCREEN Report (Version 2020)**



1 mile Ring Centered at 47.624898,-122.338144, WASHINGTON, EPA Region 10

Approximate Population: **69,087**

Input Area (sq. miles): **3.14**

**Block 37**

Selected Variables	Value	State Avg.	%ile in State	EPA Region Avg.	%ile in EPA Region	USA Avg.	%ile in USA
<b>Environmental Indicators</b>							
Particulate Matter (PM 2.5 in $\mu\text{g}/\text{m}^3$ )	7.71	8.21	45	8.52	33	8.55	25
Ozone (ppb)	33.4	37.3	22	39.1	14	42.9	6
NATA* Diesel PM ( $\mu\text{g}/\text{m}^3$ )	2.05	0.585	99	0.481	95-100th	0.478	95-100th
NATA* Cancer Risk (lifetime risk per million)	42	34	90	31	90-95th	32	80-90th
NATA* Respiratory Hazard Index	0.71	0.5	96	0.46	95-100th	0.44	95-100th
Traffic Proximity and Volume (daily traffic count/distance to road)	5800	610	98	510	99	750	97
Lead Paint Indicator (% Pre-1960 Housing)	0.29	0.23	71	0.22	71	0.28	61
Superfund Proximity (site count/km distance)	0.48	0.19	90	0.13	94	0.13	94
RMP Proximity (facility count/km distance)	0.93	0.63	78	0.65	77	0.74	74
Hazardous Waste Proximity (facility count/km distance)	17	1.9	99	1.5	99	5	96
Wastewater Discharge Indicator (toxicity-weighted concentration/m distance)	0.00015	0.0091	82	3.1	74	9.4	56
<b>Demographic Indicators</b>							
Demographic Index	27%	29%	53	29%	54	36%	44
People of Color Population	36%	31%	66	28%	72	39%	55
Low Income Population	18%	27%	37	30%	30	33%	29
Linguistically Isolated Population	3%	4%	61	3%	66	4%	62
Population With Less Than High School Education	2%	9%	19	9%	18	13%	13
Population Under 5 years of age	2%	6%	14	6%	14	6%	15
Population over 64 years of age	8%	15%	21	15%	20	15%	20

\* The National-Scale Air Toxics Assessment (NATA) is EPA's ongoing, comprehensive evaluation of air toxics in the United States. EPA developed the NATA to prioritize air toxics, emission sources, and locations of interest for further study. It is important to remember that NATA provides broad estimates of health risks over geographic areas of the country, not definitive risks to specific individuals or locations. More information on the NATA analysis can be found at: <https://www.epa.gov/national-air-toxics-assessment>.

For additional information, see: [www.epa.gov/environmentaljustice](http://www.epa.gov/environmentaljustice)

EJSCREEN is a screening tool for pre-decisional use only. It can help identify areas that may warrant additional consideration, analysis, or outreach. It does not provide a basis for decision-making, but it may help identify potential areas of EJ concern. Users should keep in mind that screening tools are subject to substantial uncertainty in their demographic and environmental data, particularly when looking at small geographic areas. Important caveats and uncertainties apply to this screening-level information, so it is essential to understand the limitations on appropriate interpretations and applications of these indicators. Please see EJSCREEN documentation for discussion of these issues before using reports. This screening tool does not provide data on every environmental impact and demographic factor that may be relevant to a particular location. EJSCREEN outputs should be supplemented with additional information and local knowledge before taking any action to address potential EJ concerns.

March 01, 2021

3/3



## EJSCREEN ACS Summary Report



Location: User-specified point center at 47.624898, -122.338144  
 Ring (buffer): 1-miles radius  
 Description: Block 37

Summary of ACS Estimates		2014 - 2018	
Population			69,087
Population Density (per sq. mile)			24,833
People of Color Population			24,727
% People of Color Population			36%
Households			44,278
Housing Units			48,147
Housing Units Built Before 1950			11,609
Per Capita Income			75,884
Land Area (sq. miles) (Source: SF1)			2.78
% Land Area			88%
Water Area (sq. miles) (Source: SF1)			0.38
% Water Area			12%

	2014 - 2018 ACS Estimates	Percent	MOE (±)
<b>Population by Race</b>			
Total	69,087	100%	984
Population Reporting One Race	64,754	94%	1,896
White	46,997	68%	575
Black	2,846	4%	223
American Indian	303	0%	140
Asian	13,835	20%	738
Pacific Islander	111	0%	84
Some Other Race	662	1%	136
Population Reporting Two or More Races	4,332	6%	595
Total Hispanic Population	3,916	6%	242
Total Non-Hispanic Population	65,171		
White Alone	44,360	64%	609
Black Alone	2,758	4%	223
American Indian Alone	284	0%	140
Non-Hispanic Asian Alone	13,813	20%	738
Pacific Islander Alone	111	0%	84
Other Race Alone	61	0%	67
Two or More Races Alone	3,784	5%	578
<b>Population by Sex</b>			
Male	39,241	57%	724
Female	29,846	43%	497
<b>Population by Age</b>			
Age 0-4	1,669	2%	113
Age 0-17	3,289	5%	274
Age 18+	65,797	95%	848
Age 65+	5,531	8%	205

**Data Note:** Detail may not sum to totals due to rounding. Hispanic population can be of any race.  
 N/A means not available. Source: U.S. Census Bureau, American Community Survey (ACS) 2014 - 2018.



## EJSCREEN ACS Summary Report



Location: User-specified point center at 47.624898, -122.338144  
 Ring (buffer): 1-miles radius  
 Description: Block 37

	2014 - 2018 ACS Estimates	Percent	MOE (±)
<b>Population 25+ by Educational Attainment</b>			
Total	58,542	100%	816
Less than 9th Grade	529	1%	132
9th - 12th Grade, No Diploma	810	1%	149
High School Graduate	3,865	7%	146
Some College, No Degree	10,320	18%	268
Associate Degree	2,975	5%	141
Bachelor's Degree or more	43,018	73%	710
<b>Population Age 5+ Years by Ability to Speak English</b>			
Total	67,418	100%	969
Speak only English	51,489	76%	571
Non-English at Home <sup>1+2+3+4</sup>	15,929	24%	729
<sup>1</sup> Speak English "very well"	13,040	19%	604
<sup>2</sup> Speak English "well"	2,232	3%	198
<sup>3</sup> Speak English "not well"	595	1%	349
<sup>4</sup> Speak English "not at all"	62	0%	49
<sup>3+4</sup> Speak English "less than well"	657	1%	349
<sup>2+3+4</sup> Speak English "less than very well"	2,889	4%	401
<b>Linguistically Isolated Households*</b>			
Total	1,242	100%	129
Speak Spanish	82	7%	45
Speak Other Indo-European Languages	330	27%	77
Speak Asian-Pacific Island Languages	652	52%	128
Speak Other Languages	178	14%	93
<b>Households by Household Income</b>			
Household Income Base	44,278	100%	457
< \$15,000	3,877	9%	187
\$15,000 - \$25,000	2,345	5%	169
\$25,000 - \$50,000	6,481	15%	241
\$50,000 - \$75,000	5,768	13%	214
\$75,000 +	25,808	58%	530
<b>Occupied Housing Units by Tenure</b>			
Total	44,278	100%	457
Owner Occupied	9,246	21%	220
Renter Occupied	35,032	79%	451
<b>Employed Population Age 16+ Years</b>			
Total	65,932	100%	827
In Labor Force	54,018	82%	684
Civilian Unemployed in Labor Force	1,863	3%	160
Not In Labor Force	11,914	18%	411

Data Note: Detail may not sum to totals due to rounding. Hispanic population can be of any race.

N/A means not available. Source: U.S. Census Bureau, American Community Survey (ACS)

\*Households in which no one 14 and over speaks English "very well" or speaks English only.





### EJSCREEN ACS Summary Report



Location: User-specified point center at 47.624898, -122.338144  
 Ring (buffer): 1-miles radius  
 Description: Block 37

	2014 - 2018 ACS Estimates	Percent	MOE (±)
<b>Population by Language Spoken at Home*</b>			
Total (persons age 5 and above)	64,900	100%	833
English	49,534	76%	673
Spanish	1,969	3%	291
French	733	1%	403
French Creole	N/A	N/A	N/A
Italian	N/A	N/A	N/A
Portuguese	N/A	N/A	N/A
German	755	1%	153
Yiddish	N/A	N/A	N/A
Other West Germanic	N/A	N/A	N/A
Scandinavian	N/A	N/A	N/A
Greek	N/A	N/A	N/A
Russian	N/A	N/A	N/A
Polish	N/A	N/A	N/A
Serbo-Croatian	N/A	N/A	N/A
Other Slavic	N/A	N/A	N/A
Armenian	N/A	N/A	N/A
Persian	N/A	N/A	N/A
Gujarathi	N/A	N/A	N/A
Hindi	N/A	N/A	N/A
Urdu	N/A	N/A	N/A
Other Indic	N/A	N/A	N/A
Other Indo-European	3,933	6%	429
Chinese	2,771	4%	632
Japanese	N/A	N/A	N/A
Korean	472	1%	181
Mon-Khmer, Cambodian	N/A	N/A	N/A
Hmong	N/A	N/A	N/A
Thai	N/A	N/A	N/A
Laotian	N/A	N/A	N/A
Vietnamese	134	0%	57
Other Asian	2,377	4%	470
Tagalog	286	0%	137
Other Pacific Island	N/A	N/A	N/A
Navajo	N/A	N/A	N/A
Other Native American	N/A	N/A	N/A
Hungarian	N/A	N/A	N/A
Arabic	468	1%	584
Hebrew	N/A	N/A	N/A
African	N/A	N/A	N/A
Other and non-specified	659	1%	185
Total Non-English	15,365	24%	1,071

Data Note: Detail may not sum to totals due to rounding. Hispanic population can be of any race.  
 N/A means not available. Source: U.S. Census Bureau, American Community Survey (ACS) 2014 - 2018.  
 \*Population by Language Spoken at Home is available at the census tract summary level and up.



EJSCREEN Census 2010 Summary Report



Location: User-specified point center at 47.624898, -122.338144  
 Ring (buffer): 1-miles radius  
 Description: Block 37

Summary	Census 2010
Population	50,301
Population Density (per sq. mile)	18,059
People of Color Population	13,793
% People of Color Population	27%
Households	33,721
Housing Units	38,685
Land Area (sq. miles)	2.79
% Land Area	88%
Water Area (sq. miles)	0.37
% Water Area	12%

Population by Race	Number	Percent
Total	50,301	-----
Population Reporting One Race	47,965	95%
White	38,418	76%
Black	2,750	5%
American Indian	499	1%
Asian	5,327	11%
Pacific Islander	152	0%
Some Other Race	819	2%
Population Reporting Two or More Races	2,336	5%
Total Hispanic Population	3,170	6%
Total Non-Hispanic Population	47,131	94%
White Alone	36,508	73%
Black Alone	2,679	5%
American Indian Alone	439	1%
Non-Hispanic Asian Alone	5,273	10%
Pacific Islander Alone	148	0%
Other Race Alone	120	0%
Two or More Races Alone	1,964	4%

Population by Sex	Number	Percent
Male	27,368	54%
Female	22,933	46%

Population by Age	Number	Percent
Age 0-4	877	2%
Age 0-17	1,997	4%
Age 18+	48,304	96%
Age 65+	4,017	8%

Households by Tenure	Number	Percent
Total	33,721	
Owner Occupied	7,837	23%
Renter Occupied	25,884	77%

Data Note: Detail may not sum to totals due to rounding. Hispanic population can be of any race.  
 Source: U.S. Census Bureau, Census 2010 Summary File 1.

## Public Participation Activities

Members of the public may ask questions, submit informal comments, or share Site information at any time. Interested parties do not need to wait for a formal public comment period to contact Ecology.

However, to be included in the formal Site record, comments about the Site investigation, cleanup alternatives, or cleanups must be submitted during formal comment periods. In addition, the public is invited to review Site documents before they become final. This is the most direct and influential way to learn more about the Site and be involved in the cleanup decision-making.

## How we share information with the community

During specific stages of the cleanup, Ecology will mail notices about public comment periods to addresses surrounding the Site. The mailing list area will vary depending on the type of contamination and where it's located, but the list will at least include addresses within a 1/4-mile radius of the Site and other interested organizations and individuals. These notices will provide general information about the Site, contact information for submitting comments, and times and locations of public meetings or hearings or how to request one if not yet scheduled.

Ecology may also develop documents outside of comment periods to keep the community updated on the Site's status. These informational documents will be available online and at document repositories. Print copies may be mailed to the nearby community if we feel the message warrants the associated cost and resources.

Comment period notices and other site announcements may also be posted in various locations throughout the community (for example, local businesses, schools, libraries).

### Postal mailing list

Ecology maintains a mailing list that includes addresses within the neighborhoods of Seattle, relevant local, state, and federal government contacts, and other interested parties.

These people receive public comment notices when draft documents are available.

We will add additional individuals, organizations, and other interested parties to the mailing list as requested. If you would like to be added to the mailing list for this Site, please contact Brad Petrovich at 425-533-5537 or [brad.petrovich@ecy.wa.gov](mailto:brad.petrovich@ecy.wa.gov).

## Site Register

Public comment periods, events, and other cleanup notices are published in Ecology's [Site Register](#).<sup>7</sup> To receive the *Site Register* by email, please contact Sarah Kellington at 360-280-3167 or [sarah.kellington@ecy.wa.gov](mailto:sarah.kellington@ecy.wa.gov), or [subscribe online](#).<sup>8</sup>

## Newspaper display ads or legal notices

We announce public comment periods and events in ads or notices published in *The Seattle Times*. We will also publish notice on our [Public Input & Events Listing](#).<sup>9</sup>

## Email lists

Ecology maintains an email list to update interested persons about this Site. If you would like to be added to the email list for this site, please email Brad Petrovich at [brad.petrovich@ecy.wa.gov](mailto:brad.petrovich@ecy.wa.gov).

## Ecology's website and social media platforms

We maintain a website for the [Block 37 Site](#).<sup>10</sup> The website provides site information, and you may download cleanup documents.

We may also share information about cleanup sites through [news releases, our ECOconnect blog, and social media](#).<sup>11</sup>

---

<sup>7</sup> [ecology.wa.gov/Regulations-Permits/Guidance-technical-assistance/Site-Register-lists-and-data](http://ecology.wa.gov/Regulations-Permits/Guidance-technical-assistance/Site-Register-lists-and-data)

<sup>8</sup> <http://listserv.wa.gov/cgi-bin/wa?SUBED1=siteregister&A=1>

<sup>9</sup> [ecology.wa.gov/Events/Search/Listing](http://ecology.wa.gov/Events/Search/Listing)

<sup>10</sup> <https://fortress.wa.gov/ecy/gsp/Sitepage.aspx?csid=6134>

<sup>11</sup> [ecology.wa.gov/About-us/Get-to-know-us/News](http://ecology.wa.gov/About-us/Get-to-know-us/News)

## **Document repositories**

During public comment periods when review locations are accessible, you can find print documents at the Ecology Northwest Regional Office and physical locations close to the Site. However due to public health and safety concerns at the time of this document, Ecology cannot offer in-person review options. Please refer to the Site website, or contact Brad Petrovich at (425) 533-5537.

## **Signs around the cleanup site**

We may also install signs displaying information about project status, traffic impacts, and health risks around the cleanup site.

## **How to share information with us**

At minimum, MTCA requires 30-day public comment periods for certain draft cleanup documents and 14-day comment periods for SEPA documents. SEPA documents are often made available for review with other cleanup documents. We may hold comment periods longer than 30 days.

We may also identify public concerns and cleanup goals by meeting with and soliciting information from interested community members and organizations. To collaborate with us about this Site, contact Tena Seeds at 425-457-3143 or [tena.seeds@ecy.wa.gov](mailto:tena.seeds@ecy.wa.gov).

## **Public comment periods**

Formal 30-day comment periods allow interested members of the public to comment on draft documents, legal agreements, and proposed cleanup actions. If there is significant interest, Ecology may extend the public comment period. When Ecology oversees SEPA determinations, we hold comment periods for at least two weeks. In this case Ecology is not overseeing SEPA.

Following a comment period, we publish all the input we received and respond to significant comments and questions, as appropriate. If the comments result in significant changes to the cleanup documents, then the documents will be revised and re-issued for public review. If the comments do not result in significant changes, then they become final.

## **Public events**

We hold public meetings, workshops, open houses, and public hearings based on community interest. If we have not scheduled a meeting during a public comment period, we will hold one if 10 people request it, and this may cause us to extend a public comment period so the meeting occurs during it.

Events are held at locations close to the Site that meet Americans with Disabilities Act standards. Public meetings, workshops, open houses, and hearings are always announced in advance using a variety of methods.

## **Plan Amendments**

Ecology developed this plan following MTCA regulations (WAC 173-340-600). We review it as the cleanup progresses and amend it as necessary. You may suggest amendments to Brad Petrovich at 425-533-5537 or [brad.petrovich@ecy.wa.gov](mailto:brad.petrovich@ecy.wa.gov).

This plan includes information for the public regarding opportunities for public involvement and comment. The outreach activities discussed in this section reflect Ecology's current plans for keeping the public informed and providing ways for those interested in the Site to communicate their concerns and questions to us.

If you feel the planned outreach activities described in this plan are insufficient, or need modification, we will work to find solutions. New outreach activities or outreach tools established as a result can be implemented right away, with or without amending this plan.