

MOUNTAINOUS: Forest Lands *Upstream of Forest Lands and Agriculture*

Common Problems for this WMU scenario:

- Upper basins: forestry management measures can lead to sedimentation and increased stream discharge
- Lower basins: Rivers are often disconnected from their floodplains due to dikes and levees, reducing surface storage and increasing in-channel velocities and flood water elevations

Understanding implications of watershed integrity:

Water flow processes are intact in upper watershed and in the lower watershed. Restoration of aquatic habitat will have a higher likelihood of success.

General Management Recommendations

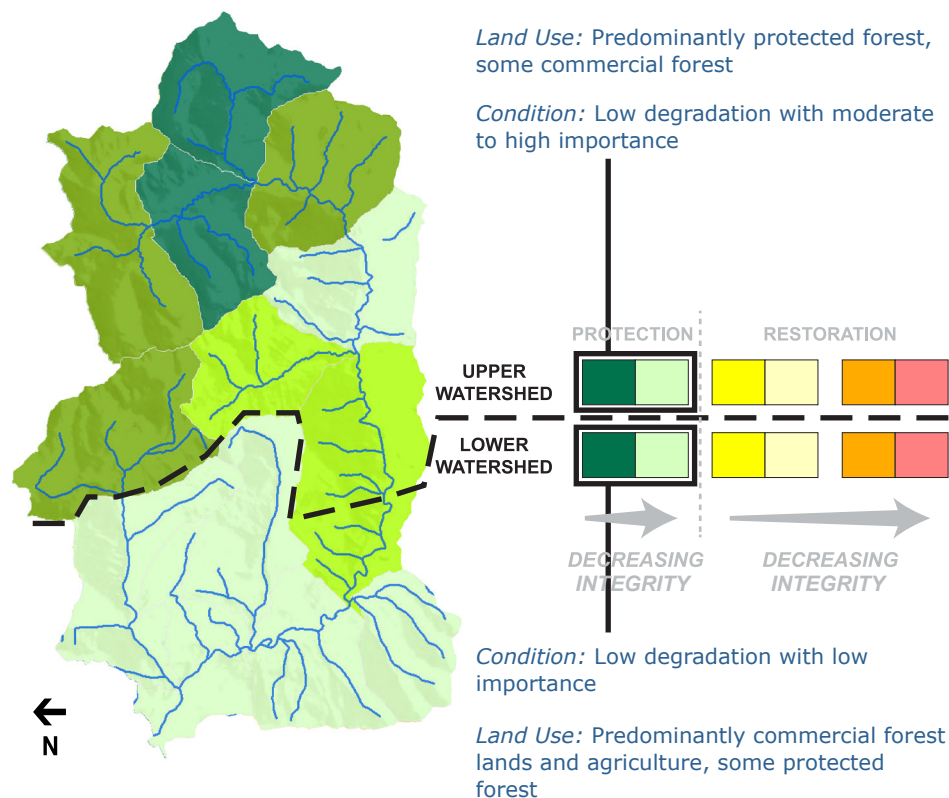
Upper Watershed (Green AUs highly prioritized for Protection)

- Employ forestry practices that maximize cover and minimizes roads and erosion

Lower Watershed (Light green AUs prioritized for Protection):

- Protect forested riparian zone and active floodplain

S.F. Nooksack River (WRIA 1)



	HIGH	Highest Protection	Highest Restoration
LEVEL OF IMPORTANCE		High Protection	High Restoration
		Low Protection	Low Restoration
		Lowest Protection	Lowest Restoration
	LOW		
		LOW	HIGH
		LEVEL OF DEGRATION	