



DEPARTMENT OF
ECOLOGY
State of Washington

Public Participation Plan

**Seattle Times Cleanup Site
1120 John St., Seattle WA 98109**

*Facility Site ID: 4377754
Cleanup Site ID: 14495*

August 2021

Publication and Contact Information

This plan is available on the Department of Ecology's website at:
[Ecology's Seattle Times Webpage](#)

For more information contact:

Northwest Regional Office
15700 Dayton Ave North
Shoreline, WA 98133

Washington State Department of Ecology – [Department of Ecology Homepage](#)

- Headquarters, Olympia 360-407-6000
- Northwest Regional Office, Shoreline 425-594-0000
- Southwest Regional Office, Olympia 360-407-6300
- Central Regional Office, Union Gap 509-575-2490
- Eastern Regional Office, Spokane 509-329-3400

To request ADA accommodation including materials in a format for the visually impaired, call Ecology at (360) 407-6831 or visit [Department of Ecology's Accessibility Homepage](#). People with impaired hearing may call Washington Relay Service at 711. People with speech disability may call TTY at 877-833-6341.

Public Participation Plan

Seattle Times Cleanup Site

Toxics Cleanup Program
Northwest Region
Washington State Department of Ecology
Shoreline, Washington

August 2021

This page is purposely left blank

Table of Contents

Public Involvement in Contamination Cleanup.....	1
Site contacts	1
Ecology	1
PLP.....	1
Public Participation Grants	2
Washington’s Cleanup Laws	2
Model Toxics Control Act (MTCA).....	2,3
State Environmental Policy Act.....	4
Site History	4
Investigation & Contamination.....	4
Cleanup plans.....	4
Why this site matters.....	5
Community Profile.....	6
EPA Environmental Justice Screens of community.....	7-13
Public Participation Activities	14
How we share information with the community.....	14
Postal mailing list.....	14
Site Register	15
Newspaper display ads or legal notices	15
Email lists.....	15
Ecology’s website and social media platforms	15
Document repositories	16
Signs around the cleanup site.....	16
How to share information with us.....	16
Public comment periods.....	16
Public events	17
Plan Amendments	17

Public Involvement in Contamination Cleanup

The Washington State Department of Ecology (Ecology) developed this public participation plan (plan) in cooperation with Onni, the party responsible for cleanup at the Seattle Times Cleanup Site (Site). The purpose of the plan is to promote meaningful community involvement during cleanup.

The plan describes ways Ecology will inform the public about contamination investigations and cleanup options throughout the cleanup process. Ecology encourages the public to learn about and get involved in decision-making opportunities. This plan identifies how and when the public can get involved during different stages of the investigation and cleanup of contamination.

This plan was developed for the Agreed Order for the Seattle Times Cleanup Site.

Site contacts

To be included in the Site record, comments about the cleanup process must be submitted during comment periods. Questions and informal comments or information about the site's history are welcome anytime.

Ecology

Northwest Regional Office
15700 Dayton Avenue North
Shoreline, WA 98133

Sunny Becker, Project Manager
sunny.becker@ecy.wa.gov
425-457-3842

Brad Petrovich, Public Involvement Mgr.
brad.petrovich@ecy.wa.gov
425-533-5537

Potentially Liable Persons (PLP)

Onni John Street (Land) LLC
Brian Brodeur-Vice President of
Development
1411 4th Avenue, Suite 1501
Seattle, WA 98101
bbrodeur@onni.com
(312) 477-2305

Public Participation Grants

Grants may be available to neighborhood committees, non-profits, and other groups interested in the Site. For contaminated sites, these funds can be used to:

- Hire an expert to help interpret technical information¹
- Conduct activities that enhance the public's understanding of, and participation in, the cleanup process

For more information about public participation grants, please contact Lynn Gooding at 360-407-6062 or lynn.gooding@ecy.wa.gov, or visit the [Public Participation Grant website](#).²

Washington's Cleanup Laws

Ecology uses the Model Toxics Control Act (MTCA) and accompanying regulations for cleanup activities. This plan is required under MTCA, a law that passed in 1989. MTCA provides guidelines for contaminated site cleanup in Washington State and sets standards to ensure the cleanup protects human health and the environment.

Model Toxics Control Act (MTCA)

MTCA began as a grassroots citizen's initiative in 1988, and started the process of systematically cleaning up contaminated sites in Washington. Under MTCA, a current or past property owner or operator may be held responsible for cleaning up contamination on, or coming from, their property to standards that are safe for human health and the environment.

Ecology enacts MTCA and oversees cleanups in the state and issues regulations and guidance governing those cleanups. The regulations are found in [Chapter 173-340 Washington Administrative Code \(WAC\)](#).³ Ecology investigates reports of property contamination, and if the contamination is seen as a significant threat to human health or the environment, the contaminated property is placed on the Confirmed and Suspected Contaminated Sites List for further assessment. The cleanup process can begin at any time after a release of a hazardous substance to the environment has been discovered.

¹ Ecology currently does not have a citizen technical advisor for providing technical assistance to citizens on issues related to the investigation and cleanup of the site.

² ecology.wa.gov/About-us/How-we-operate/Grants-loans/Find-a-grant-or-loan/Public-participation-grants

³ <https://apps.ecology.wa.gov/publications/publications/9406.pdf>

Public participation is an important part of cleanup under the MTCA process. Participation needs are assessed at each cleanup site according to the level of public interest and the degree of risk posed by the contamination. Individuals who live near the site, community groups, businesses, government, other organizations, and interested parties have the opportunity to get involved by commenting on the cleanup process. Under MTCA, the cleanup process generally includes five phases. Each phase has an opportunity for the public to have input.

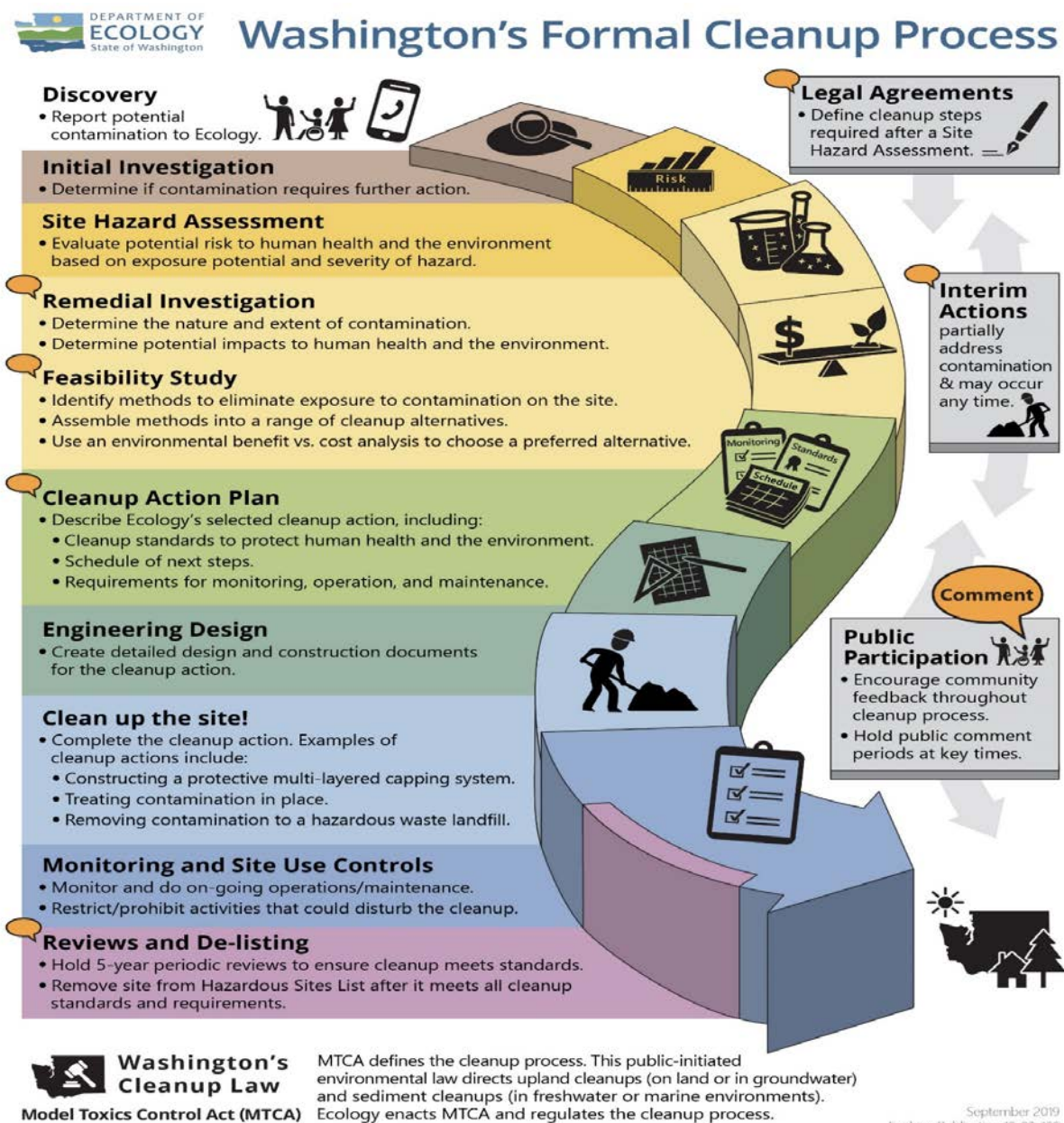


Figure 1: Steps in Washington's Cleanup Process⁴

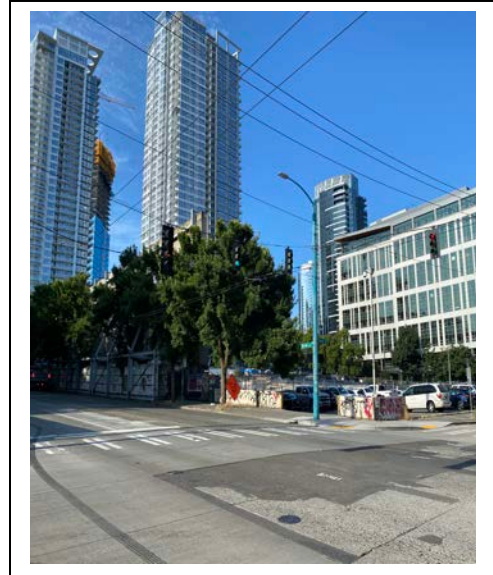
⁴ <https://apps.ecology.wa.gov/publications/SummaryPages/1909166.html>

State Environmental Policy Act

MTCA cleanups also require evaluation under the State Environmental Policy Act (SEPA; [Chapter 197-11 WAC](#)⁵). Under SEPA, the potential for significant adverse environmental impacts from a project or action must be evaluated by state and local agencies when making decisions. This evaluation is subject to public review and comment in parallel with cleanup documents.

Site History

Seattle Times site is located at 1120 John Street in Seattle. Seattle Times first began operations at the facility in 1931. While in operation, the facility included at least 11 underground storage tanks (USTs), which contained a range of compounds including waste oils and liquids, heating oil, diesel fuel, gasoline, and petroleum- and solvent-based inks. Seattle Times ceased operations at its 1120 John Street facility in 2011. In 2013, Onni John Street (Land) LLC (Onni) purchased the former Seattle Times facility from Seattle Times.



Investigation & Contamination

In 2012 and 2013, Environmental Partners, Inc. (EPI), on behalf of the Onni Group, performed a limited subsurface investigation at the Seattle Times property. In 2018, EPI collected additional data to assess the vertical and horizontal limits of contamination previously identified in 2012 and 2013. In 2020, Onni submitted a draft Remedial Investigation Report to Ecology, which Ecology reviewed and then provided comments. Onni collected additional data in 2020 independently without Ecology's oversight.



Historical Seattle Times Building

These have documented the following hazardous substances in soil and/or groundwater in amounts that exceed minimum allowed levels under the Model Toxics Control Act (MTCA):

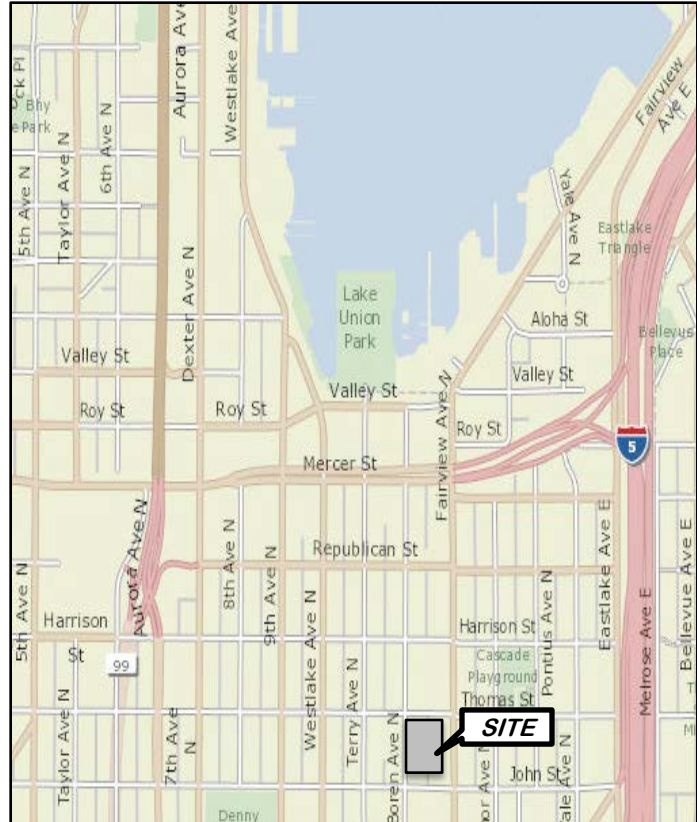
- total petroleum hydrocarbons
- polychlorinated biphenyls (PCBs)
- tetrachloroethene (PCE)
- trichloroethene (TCE)
- vinyl chloride (VC)

⁵ <https://apps.leg.wa.gov/wac/default.aspx?cite=197-11>

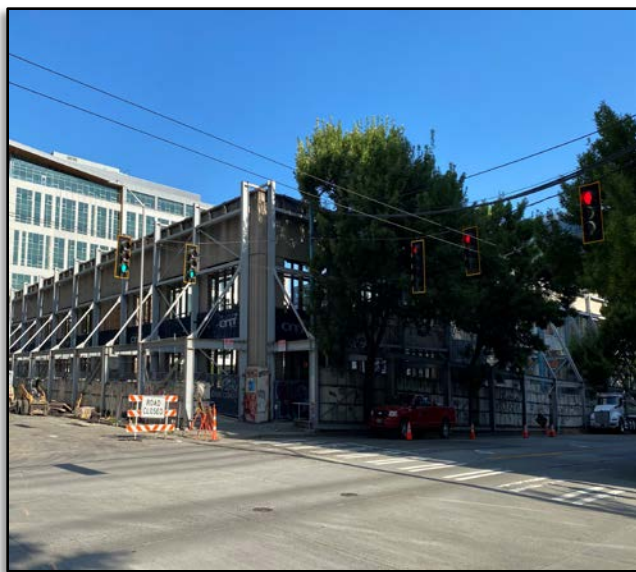
Cleanup plans

As of September 13, 2021 Ecology will conduct a 30-day public comment period on the Agreed Order (legal agreement) and Public Participation Plan. The Agreed Order directs the liable parties to investigate environmental conditions, evaluate cleanup alternatives, conduct interim cleanup actions (if necessary), and develop a cleanup action plan for the Site.

Should any comments result in significant changes to these documents, revised versions will be available for review during a new comment period. If there are no public comments that require significant changes to the documents, then the documents will be signed, if applicable, and considered final. The cleanup process will then move forward.



Why this site matters



Seattle Times Site & Seattle vicinity

The Seattle Times Site is part of the South Lake Union neighborhood, which is located next to downtown Seattle and near Lake Union to the north. This area has a long history of industrial and commercial activities which caused contamination of the soil and groundwater. Currently, this area is undergoing extensive redevelopment as new buildings are constructed for commercial and residential use. Ecology is working with property owners to clean up contamination present at the Site and other nearby sites to reduce impacts to human health and the environment.

Community Profile

The Environmental Protection Agency (EPA) has developed a new environmental justice (EJ) mapping and screening tool called [EJSCREEN](https://ejscreen.epa.gov/mapper/index.html)⁶. It is based on nationally consistent data and an approach that combines environmental and demographic indicators in maps and reports. Ecology uses this information to tailor its communications to the needs of particular communities, including: develop language translations, identify the need for interpreters, and generate other information for the community. Ecology translates materials like factsheets into languages that are spoken by 5 percent or more of the local community. In this case the data indicates that no language other than English meets that threshold. However as a best practice in the South Lake Union area, Ecology is translating factsheets in to Spanish and Chinese (Mandarin), and will do so here as well. When public meetings are needed, or requested by 10 or more persons during a public comment period, Ecology will provide interpreter services in those languages.

⁶ <https://ejscreen.epa.gov/mapper/index.html>



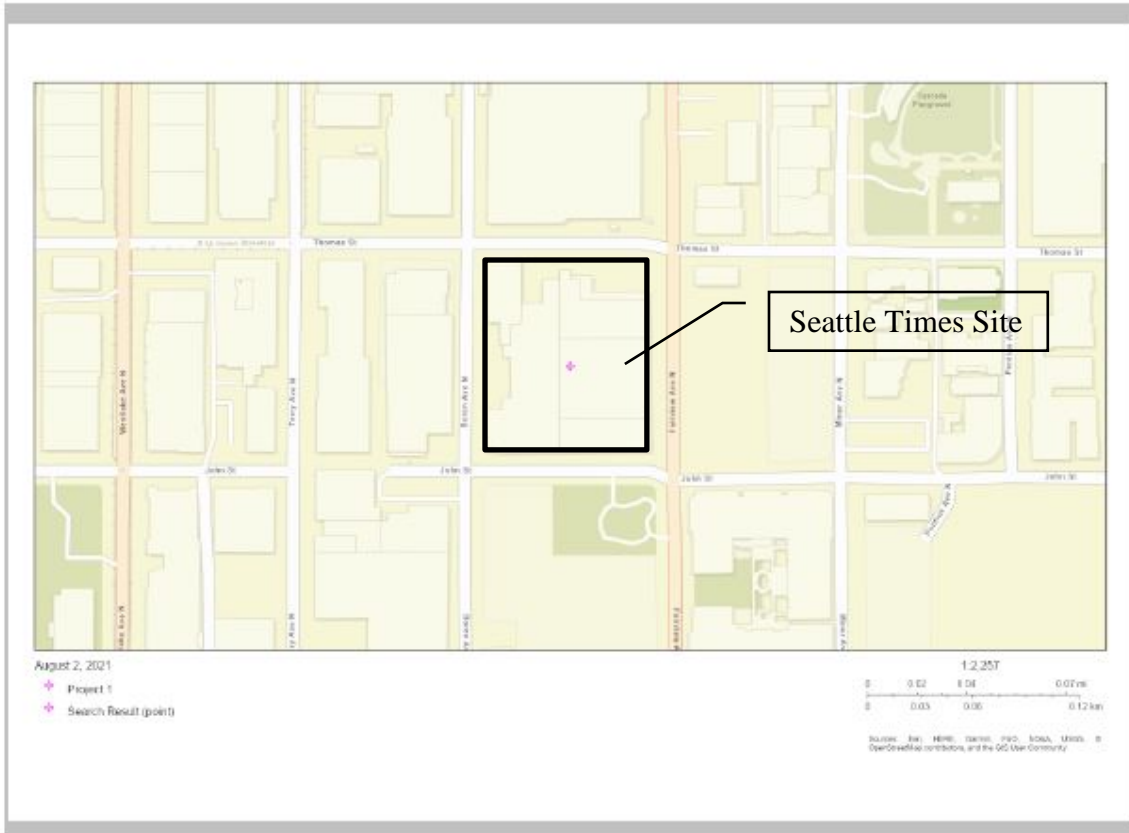
EJSCREEN Report (Version 2020)



1 mile Ring Centered at 47.620233,-122.335100, WASHINGTON, EPA Region 10

Approximate Population: 75,621

Input Area (sq. miles): 3.14



Sites reporting to EPA	
Superfund NPL	0
Hazardous Waste Treatment, Storage, and Disposal Facilities (TSDF)	10



EJSCREEN Report (Version 2020)

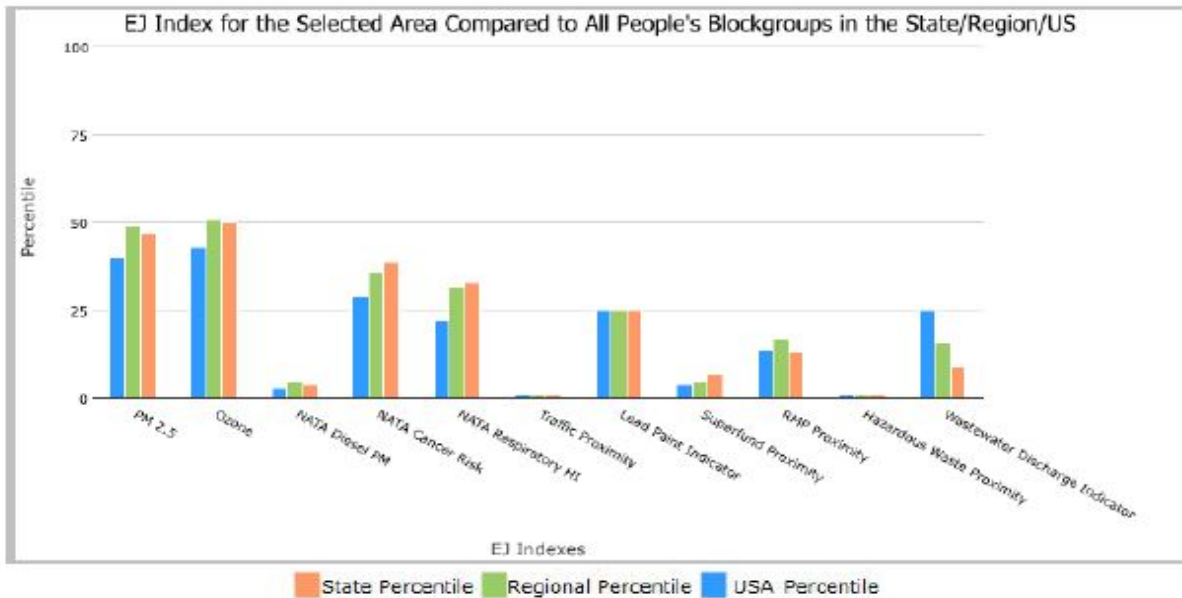


1 mile Ring Centered at 47.620233,-122.335100, WASHINGTON, EPA Region 10

Approximate Population: 75,621

Input Area (sq. miles): 3.14

Selected Variables	State Percentile	EPA Region Percentile	USA Percentile
EJ Indexes			
EJ Index for PM2.5	47	49	40
EJ Index for Ozone	50	51	43
EJ Index for NATA ¹ Diesel PM	4	5	3
EJ Index for NATA ¹ Air Toxics Cancer Risk	39	38	29
EJ Index for NATA ¹ Respiratory Hazard Index	33	32	22
EJ Index for Traffic Proximity and Volume	1	1	1
EJ Index for Lead Paint Indicator	25	25	25
EJ Index for Superfund Proximity	7	5	4
EJ Index for RMP Proximity	13	17	14
EJ Index for Hazardous Waste Proximity	1	1	1
EJ Index for Wastewater Discharge Indicator	9	16	25



This report shows the values for environmental and demographic indicators and EJSCREEN indexes. It shows environmental and demographic raw data (e.g., the estimated concentration of ozone in the air), and also shows what percentile each raw data value represents. These percentiles provide perspective on how the selected block group or buffer area compares to the entire state, EPA region, or nation. For example, if a given location is at the 95th percentile nationwide, this means that only 5 percent of the US population has a higher block group value than the average person in the location being analyzed. The years for which the data are available, and the methods used, vary across these indicators. Important caveats and uncertainties apply to this screening-level information, so it is essential to understand the limitations on appropriate interpretations and applications of these indicators. Please see EJSCREEN documentation for discussion of these issues before using reports.

August 02, 2021

1/3



EJSCREEN Report (Version 2020)



1 mile Ring Centered at 47.620233,-122.335100, WASHINGTON, EPA Region 10

Approximate Population: 75,621

Input Area (sq. miles): 3.14

Selected Variables	Value	State Avg.	%ile in State	EPA Region Avg.	%ile in EPA Region	USA Avg.	%ile in USA
Environmental Indicators							
Particulate Matter (PM 2.5 in $\mu\text{g}/\text{m}^3$)	7.74	8.21	46	8.52	33	8.55	25
Ozone (ppb)	33.4	37.3	23	39.1	14	42.9	6
NATA [*] Diesel PM ($\mu\text{g}/\text{m}^3$)	2.06	0.585	99	0.481	95-100th	0.478	95-100th
NATA [*] Cancer Risk (lifetime risk per million)	42	34	91	31	95-100th	32	80-90th
NATA [*] Respiratory Hazard Index	0.72	0.5	97	0.46	95-100th	0.44	95-100th
Traffic Proximity and Volume (daily traffic count/distance to road)	6100	610	99	510	99	750	98
Lead Paint Indicator (% Pre-1960 Housing)	0.28	0.23	70	0.22	71	0.28	61
Superfund Proximity (site count/km distance)	0.53	0.19	92	0.13	95	0.13	95
RMP Proximity (facility count/km distance)	0.98	0.63	79	0.65	78	0.74	75
Hazardous Waste Proximity (facility count/km distance)	17	1.9	99	1.5	99	5	96
Wastewater Discharge Indicator (toxicity-weighted concentration/m distance)	0.00024	0.0091	84	3.1	76	9.4	58
Demographic Indicators							
Demographic Index	28%	29%	57	29%	57	36%	46
People of Color Population	36%	31%	67	28%	72	39%	55
Low Income Population	20%	27%	42	30%	34	33%	33
Linguistically Isolated Population	3%	4%	62	3%	67	4%	63
Population With Less Than High School Education	3%	9%	23	9%	21	13%	16
Population Under 5 years of age	2%	6%	12	6%	12	6%	13
Population over 64 years of age	9%	15%	27	15%	25	15%	26

* The National-Scale Air Toxics Assessment (NATA) is EPA's ongoing, comprehensive evaluation of air toxics in the United States. EPA developed the NATA to prioritize air toxics, emission sources, and locations of interest for further study. It is important to remember that NATA provides broad estimates of health risks over geographic areas of the country, not definitive risks to specific individuals or locations. More information on the NATA analysis can be found at: <https://www.epa.gov/national-air-toxics-assessment>.

For additional information, see: www.epa.gov/environmentaljustice

EJSCREEN is a screening tool for pre-decisional use only. It can help identify areas that may warrant additional consideration, analysis, or outreach. It does not provide a basis for decision-making, but it may help identify potential areas of EJ concern. Users should keep in mind that screening tools are subject to substantial uncertainty in their demographic and environmental data, particularly when looking at small geographic areas. Important caveats and uncertainties apply to this screening-level information, so it is essential to understand the limitations on appropriate interpretations and applications of these indicators. Please see EJSCREEN documentation for discussion of these issues before using reports. This screening tool does not provide data on every environmental impact and demographic factor that may be relevant to a particular location. EJSCREEN outputs should be supplemented with additional information and local knowledge before taking any action to address potential EJ concerns.

August 02, 2021

3/3



EJSCREEN ACS Summary Report



Location: User-specified point center at 47.620233, -122.335100
 Ring (buffer): 1-miles radius
 Description:

Summary of ACS Estimates	2014 - 2018
Population	75,621
Population Density (per sq. mile)	26,358
People of Color Population	27,151
% People of Color Population	36%
Households	49,372
Housing Units	53,969
Housing Units Built Before 1950	12,870
Per Capita Income	72,265
Land Area (sq. miles) (Source: SF1)	2.87
% Land Area	89%
Water Area (sq. miles) (Source: SF1)	0.35
% Water Area	11%

	2014 - 2018 ACS Estimates	Percent	MOE (±)
Population by Race			
Total	75,621	100%	984
Population Reporting One Race	70,767	94%	2,003
White	51,377	68%	575
Black	3,452	5%	223
American Indian	436	1%	247
Asian	14,355	19%	738
Pacific Islander	128	0%	84
Some Other Race	1,019	1%	136
Population Reporting Two or More Races	4,854	6%	595
Total Hispanic Population	4,588	6%	242
Total Non-Hispanic Population	71,033		
White Alone	48,470	64%	609
Black Alone	3,359	4%	223
American Indian Alone	408	1%	247
Non-Hispanic Asian Alone	14,321	19%	738
Pacific Islander Alone	128	0%	84
Other Race Alone	64	0%	67
Two or More Races Alone	4,284	6%	578
Population by Sex			
Male	43,399	57%	724
Female	32,222	43%	497
Population by Age			
Age 0-4	1,638	2%	146
Age 0-17	3,150	4%	274
Age 18+	72,471	96%	848
Age 65+	6,897	9%	205

Data Note: Detail may not sum to totals due to rounding. Hispanic population can be of any race.
 N/A means not available. Source: U.S. Census Bureau, American Community Survey (ACS) 2014 - 2018



EJSCREEN ACS Summary Report



Location: User-specified point center at 47.620233, -122.335100
 Ring (buffer): 1-miles radius
 Description:

	2014 - 2018 ACS Estimates	Percent	MOE (±)
Population 25+ by Educational Attainment			
Total	64,232	100%	816
Less than 9th Grade	733	1%	132
9th - 12th Grade, No Diploma	1,012	2%	149
High School Graduate	4,536	7%	180
Some College, No Degree	12,142	19%	307
Associate Degree	3,640	6%	258
Bachelor's Degree or more	45,809	71%	710
Population Age 5+ Years by Ability to Speak English			
Total	73,983	100%	969
Speak only English	57,085	77%	571
Non-English at Home ¹⁺²⁺³⁺⁴	16,898	23%	729
¹ Speak English "very well"	13,719	19%	604
² Speak English "well"	2,381	3%	198
³ Speak English "not well"	622	1%	349
⁴ Speak English "not at all"	175	0%	86
³⁺⁴ Speak English "less than well"	797	1%	349
²⁺³⁺⁴ Speak English "less than very well"	3,179	4%	401
Linguistically Isolated Households*			
Total	1,487	100%	129
Speak Spanish	119	8%	45
Speak Other Indo-European Languages	346	23%	77
Speak Asian-Pacific Island Languages	858	58%	128
Speak Other Languages	163	11%	93
Households by Household Income			
Household Income Base	49,372	100%	457
< \$15,000	5,238	11%	248
\$15,000 - \$25,000	2,887	6%	169
\$25,000 - \$50,000	7,246	15%	241
\$50,000 - \$75,000	6,823	14%	243
\$75,000 +	27,177	55%	530
Occupied Housing Units by Tenure			
Total	49,372	100%	457
Owner Occupied	9,621	19%	220
Renter Occupied	39,751	81%	451
Employed Population Age 16+ Years			
Total	72,607	100%	827
In Labor Force	58,340	80%	684
Civilian Unemployed in Labor Force	1,897	3%	160
Not In Labor Force	14,267	20%	411

Data Note: Detail may not sum to totals due to rounding. Hispanic population can be of any race.
 N/A means not available. **Source:** U.S. Census Bureau, American Community Survey (ACS)
 *Households in which no one 14 and over speaks English "very well" or speaks English only.



EJSCREEN ACS Summary Report



Location: User-specified point center at 47.620233, -122.335100
 Ring (buffer): 1-miles radius
 Description:

	2014 - 2018 ACS Estimates	Percent	MOE (±)
Population by Language Spoken at Home*			
Total (persons age 5 and above)	77,021	100%	833
English	59,826	78%	673
Spanish	2,544	3%	291
French	770	1%	403
French Creole	N/A	N/A	N/A
Italian	N/A	N/A	N/A
Portuguese	N/A	N/A	N/A
German	826	1%	153
Yiddish	N/A	N/A	N/A
Other West Germanic	N/A	N/A	N/A
Scandinavian	N/A	N/A	N/A
Greek	N/A	N/A	N/A
Russian	N/A	N/A	N/A
Polish	N/A	N/A	N/A
Serbo-Croatian	N/A	N/A	N/A
Other Slavic	N/A	N/A	N/A
Armenian	N/A	N/A	N/A
Persian	N/A	N/A	N/A
Gujarathi	N/A	N/A	N/A
Hindi	N/A	N/A	N/A
Urdu	N/A	N/A	N/A
Other Indic	N/A	N/A	N/A
Other Indo-European	4,117	5%	429
Chinese	3,006	4%	632
Japanese	N/A	N/A	N/A
Korean	624	1%	181
Mon-Khmer, Cambodian	N/A	N/A	N/A
Hmong	N/A	N/A	N/A
Thai	N/A	N/A	N/A
Laotian	N/A	N/A	N/A
Vietnamese	140	0%	57
Other Asian	2,558	3%	470
Tagalog	395	1%	137
Other Pacific Island	N/A	N/A	N/A
Navajo	N/A	N/A	N/A
Other Native American	N/A	N/A	N/A
Hungarian	N/A	N/A	N/A
Arabic	469	1%	584
Hebrew	N/A	N/A	N/A
African	N/A	N/A	N/A
Other and non-specified	827	1%	185
Total Non-English	17,195	22%	1,071

Data Note: Detail may not sum to totals due to rounding. Hispanic population can be of any race.
 N/A means not available. **Source:** U.S. Census Bureau, American Community Survey (ACS) 2014 - 2018.
 *Population by Language Spoken at Home is available at the census tract summary level and up.



EJSCREEN Census 2010 Summary Report



Location: **User-specified point center at 47.620233, -122.335100**
 Ring (buffer): 1-miles radius
 Description:

Summary	Census 2010
Population	54,873
Population Density (per sq. mile)	19,124
People of Color Population	15,848
% People of Color Population	29%
Households	37,153
Housing Units	42,994
Land Area (sq. miles)	2.87
% Land Area	89%
Water Area (sq. miles)	0.34
% Water Area	11%

Population by Race	Number	Percent
Total	54,873	-----
Population Reporting One Race	52,316	95%
White	41,128	75%
Black	3,311	6%
American Indian	594	1%
Asian	6,126	11%
Pacific Islander	170	0%
Some Other Race	987	2%
Population Reporting Two or More Races	2,557	5%
Total Hispanic Population	3,593	7%
Total Non-Hispanic Population	51,280	93%
White Alone	39,025	71%
Black Alone	3,230	6%
American Indian Alone	518	1%
Non-Hispanic Asian Alone	6,065	11%
Pacific Islander Alone	165	0%
Other Race Alone	144	0%
Two or More Races Alone	2,134	4%

Population by Sex	Number	Percent
Male	30,312	55%
Female	24,561	45%

Population by Age	Number	Percent
Age 0-4	840	2%
Age 0-17	1,855	3%
Age 18+	53,018	97%
Age 65+	5,168	9%

Households by Tenure	Number	Percent
Total	37,153	
Owner Occupied	7,963	21%
Renter Occupied	29,190	79%

Data Note: Detail may not sum to totals due to rounding. Hispanic population can be of any race.
 Source: U.S. Census Bureau, Census 2010 Summary File 1.

Public Participation Activities

Members of the public may ask questions, submit informal comments, or share Site information at any time. Interested parties do not need to wait for a formal public comment period to contact Ecology.

However, to be included in the formal Site record, comments about the Site investigation, cleanup alternatives, or cleanups must be submitted during formal comment periods. In addition, the public is invited to review Site documents before they become final. This is the most direct and influential way to learn more about the Site and be involved in the cleanup decision-making.

How we share information with the community

During specific stages of the cleanup, Ecology will mail notices about public comment periods to addresses surrounding the Site. The mailing list area will vary depending on the type of contamination and where it's located, but the list will at least include addresses within a 1/4-mile radius of the Site and other interested organizations and individuals. These notices will provide general information about the Site, contact information for submitting comments, and times and locations of public meetings or hearings or how to request one if not yet scheduled.

Ecology may also develop documents outside of comment periods to keep the community updated on the Site's status. These informational documents will be available online and at document repositories. Print copies may be mailed to the nearby community if we feel the message warrants the associated cost and resources.

Comment period notices and other site announcements may also be posted in various locations throughout the community (for example, local businesses, schools, libraries).

Postal mailing list

Ecology maintains a mailing list that includes addresses within the neighborhoods of Seattle, relevant local, state, and federal government contacts, and other interested parties.

These people receive public comment notices when draft documents are available.

We will add additional individuals, organizations, and other interested parties to the mailing list as requested. If you would like to be added to the mailing list for this Site, please contact Brad Petrovich at 425-533-5537 or brad.petrovich@ecy.wa.gov.

Site Register

Public comment periods, events, and other cleanup notices are published in Ecology's [Site Register](#).⁷ To receive the *Site Register* by email, please contact Sarah Kellington at 360-280-3167 or sarah.kellington@ecy.wa.gov, or [subscribe online](#).⁸

Newspaper display ads or legal notices

We announce public comment periods and events in ads or notices published in *The Seattle Times*. We will also publish notice on our [Public Input & Events Listing](#).⁹

Email lists

Ecology maintains an email list to update interested persons about this Site. If you would like to be added to the email list for this site, please email Brad Petrovich at brad.petrovich@ecy.wa.gov.

Ecology's website and social media platforms

We maintain a website for the [Seattle Times Site](#).¹⁰ The website provides site information, and you may download cleanup documents.

We may also share information about cleanup sites through [news releases, our ECOconnect blog, and social media](#).¹¹

⁷ ecology.wa.gov/Regulations-Permits/Guidance-technical-assistance/Site-Register-lists-and-data

⁸ <http://listserv.wa.gov/cgi-bin/wa?SUBED1=siteregister&A=1>

⁹ ecology.wa.gov/Events/Search/Listing

¹⁰ <https://fortress.wa.gov/ecy/gsp/Sitepage.aspx?csid=14495>

¹¹ ecology.wa.gov/About-us/Get-to-know-us/News

Document repositories

During public comment periods when review locations are accessible, you can find print documents at the Ecology Northwest Regional Office and physical locations close to the Site. However due to public health and safety concerns at the time of this document, Ecology cannot offer in-person review options. Please refer to the Site website, or contact Brad Petrovich at (425) 533-5537.

Signs around the cleanup site

We may also install signs displaying information about project status, traffic impacts, and health risks around the cleanup site.

How to share information with us

At minimum, MTCA requires 30-day public comment periods for certain draft cleanup documents and 14-day comment periods for SEPA documents. SEPA documents are often made available for review with other cleanup documents. We may hold comment periods longer than 30 days.

We may also identify public concerns and cleanup goals by meeting with and soliciting information from interested community members and organizations. To collaborate with us about this Site, contact Sunny Becker at 425-457-3842 or sunny.becker@ecy.wa.gov.

Public comment periods

Formal 30-day comment periods allow interested members of the public to comment on draft documents, legal agreements, and proposed cleanup actions. If there is significant interest, Ecology may extend the public comment period. When Ecology oversees SEPA determinations, we hold comment periods for at least two weeks. In this case Ecology is not overseeing SEPA.

Following a comment period, we publish all the input we received and respond to significant comments and questions, as appropriate. If the comments result in significant changes to the cleanup documents, then the documents will be revised and re-issued for public review. If the comments do not result in significant changes, then they become final.

Public events

We hold public meetings, workshops, open houses, and public hearings based on community interest. If we have not scheduled a meeting during a public comment period, we will hold one if 10 people request it, and this may cause us to extend a public comment period so the meeting occurs during it.

Events are held at locations close to the Site that meet Americans with Disabilities Act standards. Public meetings, workshops, open houses, and hearings are always announced in advance using a variety of methods.

Plan Amendments

Ecology developed this plan following MTCA regulations (WAC 173-340-600). We review it as the cleanup progresses and amend it as necessary. You may suggest amendments to Brad Petrovich at 425-533-5537 or brad.petrovich@ecy.wa.gov.

This plan includes information for the public regarding opportunities for public involvement and comment. The outreach activities discussed in this section reflect Ecology's current plans for keeping the public informed and providing ways for those interested in the Site to communicate their concerns and questions to us.

If you feel the planned outreach activities described in this plan are insufficient, or need modification, we will work to find solutions. New outreach activities or outreach tools established as a result can be implemented right away, with or without amending this plan.