

## Investigation and Cleanup Documents Available for Public Review and Comment



A PUGET SOUND INITIATIVE Site

Reaching the goal of a healthy, sustainable Puget Sound.

### Ecology Wants Your Input!

The Department of Ecology is asking for your comments on plans to clean up a site in Port Gamble Bay. The Port Gamble Leased Area Site is one of two sites within Port Gamble Bay that Ecology is cleaning up. The Site is located at the southwest end of Port Gamble Bay, in Port Gamble, Kitsap County, WA. Port Gamble Bay is one of several embayments in Puget Sound that Ecology is studying and cleaning up under the state's Puget Sound Initiative.

You are invited to comment on the following documents:

- Draft Remedial Investigation (RI)
- Draft Feasibility Study (FS)

Ecology will accept comments from *February 28 to March 29, 2011*. See the box on the right for details about where to review documents and submit comments.

### Come to the Open House March 9

A public meeting will be held on March 9 beginning with an open house at 4:30 pm and a presentation/Q&A at 5:30 pm. The location is the Hood Canal Vista Pavilion, located on NE View Drive in Port Gamble. We invite you to come and learn about plans to clean up Port Gamble Bay.

### Site Background

The Port Gamble Leased Area Site is located in Port Gamble Bay in Kitsap County and adjacent to the historic Pope & Talbot Sawmill property, which manufactured forest products for over 142 years (1853 to 1995). The Site includes the central bay, portions of the eastern shoreline, and two areas along the

### Comments Invited

February 28 to March 29, 2011

#### Submit Comments and Questions to:

Kevin MacLachlan - Site Manager  
WA Department of Ecology  
Toxics Cleanup Program  
PO Box 47600  
Olympia, WA 98504-7600  
Phone: (360) 407-6798  
E-mail: Kevin.MacLachlan@ecy.wa.gov

#### Document Review Locations

##### Kitsap Regional Library – Poulsbo Branch

700 NE Lincoln Road  
Poulsbo, WA 98370  
Phone: (360) 779-2915

Hours: Mon – Wed 10 am - 8 pm  
Thurs 1 pm - 5 pm  
Fri 10 am - 6 pm  
Sat – Sun 1 pm - 5 pm

##### WA Department of Ecology Headquarters

300 Desmond Drive SE  
Lacey, WA 98503

By appointment only:  
Contact Carol Dorn  
Carol.Dorn@ecy.wa.gov or  
(360) 407-7224

##### Ecology's Toxics Cleanup Website

[http://www.ecy.wa.gov/programs/tcp/sites/dnrAquaticLandLease/dnr\\_hp.htm](http://www.ecy.wa.gov/programs/tcp/sites/dnrAquaticLandLease/dnr_hp.htm)

Facility Site ID #: 1567413

southwest shoreline.

These two areas include an area leased to Pope & Talbot, Inc. by the Washington Department of Natural Resources from 1974 to 1995, and a former log transfer facility (see map on page 4). Cleanup is addressed separately for the Pope & Talbot, Inc. Sawmill Site, located on the northwest corner of the bay (see Facility Site ID #93937775).

The lumber mill at Port Gamble operated from 1853 to 1995, with log transfer and rafting activities in several locations throughout the bay, including the former leased area and former log transfer facility. These activities deposited wood waste on the bed of Port Gamble Bay.

### **Draft Remedial Investigation**

The RI describes which contaminants are on the Site, where they are located, and whether there is a significant threat to human health or the environment.

Ecology investigated wood waste impacts from historical log handling operations throughout the bay. Wood waste was found in the bay, with the highest accumulations along the west side of the bay from south of the former mill through the former leased area. Wood waste also exists along the shore on the east side of the bay, near a former rail line.

When wood waste breaks down, it releases sulfide and ammonia, which are harmful to animals in the mud. Other chemicals that may bioaccumulate in shellfish are present in low concentrations throughout the bay, and include arsenic, cadmium, carcinogenic PAHs, and dioxins/furans. In addition, wood waste can cause impacts to sediment by

smothering aquatic habitat and animals, such as clams.

Tissue samples from geoduck, crabs, clams and oysters were analyzed to assess potential risks to people eating shellfish at high levels. Samples had very low or non-detectable amounts of metals, dioxins/furans, cPAHs, and polychlorinated biphenyls (PCBs).

### **Draft Feasibility Study**

In the FS, Ecology evaluates potential cleanup action alternatives and recommends a preferred cleanup action. Information from the RI about the amount and location of contaminants is used to understand risk and identify alternatives for cleanup. Alternatives may contain contamination, remove contamination, or include institutional controls to reduce exposure, and they may be used in different combinations.

The FS evaluates four cleanup alternatives to address risk at the Site. Monitored natural recovery was selected as the preferred alternative, using ongoing, naturally occurring processes to reduce sediment impacts over time. This alternative also includes long-term monitoring for up to 20 years in some areas of the Site.

Information from a bay-wide Cultural Resources Overview, which identifies and maps areas of historical, archaeological, and cultural resources within the project area, was considered in the evaluation of the alternatives. A Preliminary Habitat Resource Analysis is also included in this FS to summarize the importance of eelgrass and shellfish as resources and help inform cleanup in Port Gamble Bay.



## Port Gamble Leased Area Site

This preferred alternative is protective of human health and the environment, is a permanent solution that can be completed in a reasonable timeframe, addresses public concerns identified to date, and is compatible with proposed future land uses at the Site.

### Why This Cleanup Matters

#### Protecting and restoring Puget Sound

Governor Chris Gregoire and the Washington State Legislature established the Puget Sound Initiative to protect and restore Puget Sound. Seven embayments in Puget Sound have been identified as high priority cleanup areas as part of this Initiative, including Port Gamble, Dumas Bay, Padilla and Fidalgo Bays, Port Angeles, Budd Inlet, and Port Gardner Bay. Combined, this work includes cleaning up 50-60 sites within one-half mile of the Sound. One of these is the Port Gamble Leased Area. These cleanup actions will help to reduce pollution and restore habitat and shorelines in Puget Sound.

#### Other sites and activities near this site:

Pope & Talbot, Inc. Sawmill Site: Just north in the bay, this Site included a sawmill, woodchip loading facilities, a log transfer facility, and log rafting and storage. The draft RI and FS for this Site are also available for review (Facility Site #93937775).

For more information about other cleanup sites:

[http://www.ecy.wa.gov/programs/tcp/sites/sites\\_information.html](http://www.ecy.wa.gov/programs/tcp/sites/sites_information.html)

### What Happens Next?

Once the public comment period ends on March 29, Ecology will review and consider all comments. Cleanup documents may be modified based on your comments. The Public Participation Plan for this Site is updated and has more information about the cleanup process and how you can get involved.

Ecology will notify you about future cleanup work and public comment periods.

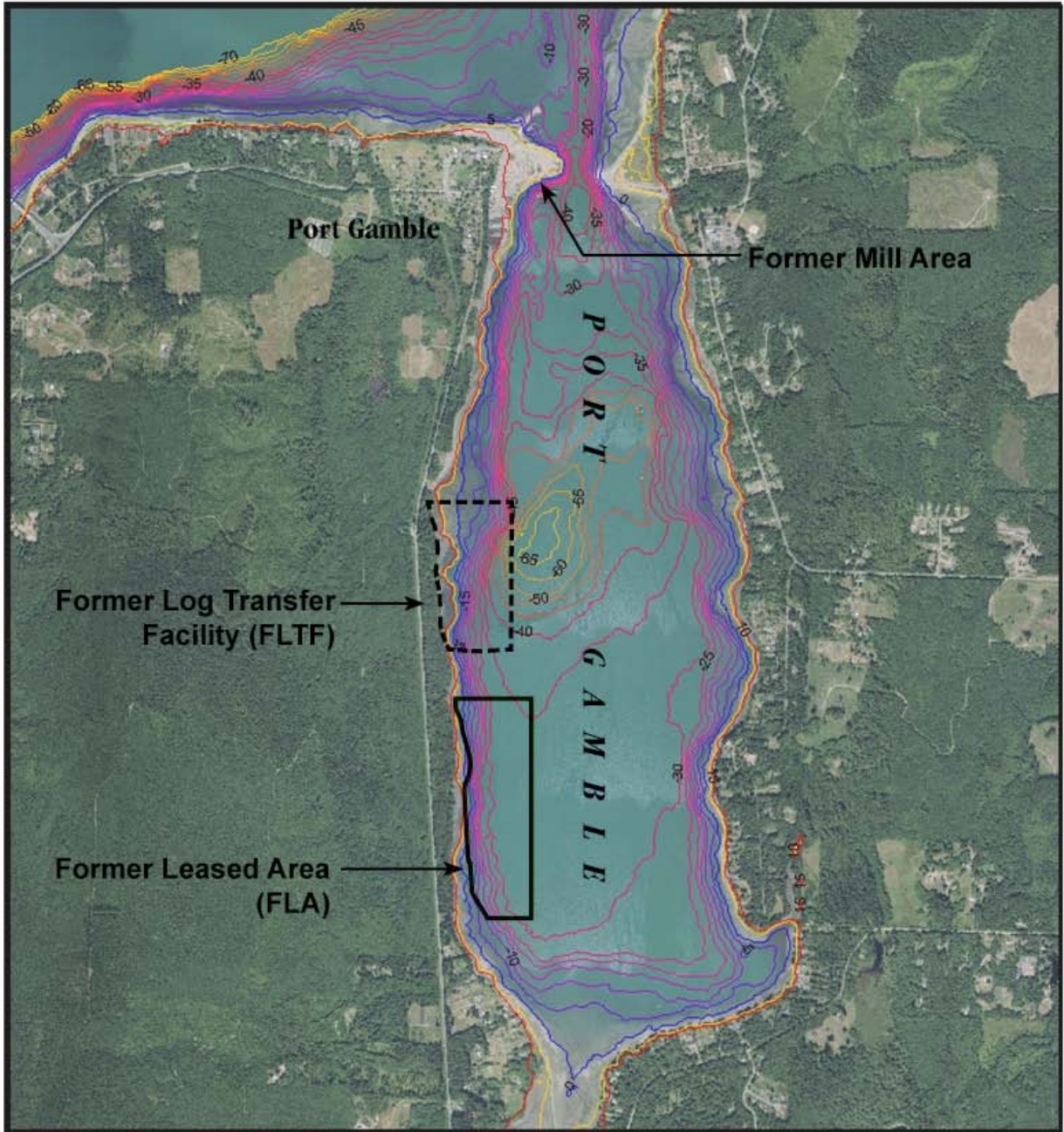
For information about other Ecology public comment periods, meetings, and other events, please visit Ecology's public events calendar at: <http://apps.ecy.wa.gov/pubcalendar/calendar.asp>.

#### What can you do?

1. Read about the cleanup in this handout.
2. To get more detailed information, review the supporting documents at the locations listed on page one.
3. Write down your comments and questions. Send them to the Department of Ecology at the address shown on page one.
4. Come to the public meeting on March 9 beginning with an open house at 4:30 and a presentation/Q&A at 5:30 at the Hood Canal Vista Pavilion.

**We appreciate your comments and concerns.**  
*Thank you.*

# Port Gamble Leased Area Site



Port Gamble  
Leased Area



## Port Gamble Leased Area Site



Historic photo of Port Gamble Bay log driving.



View of the Port Gamble Leased Area Site.



Toxics Cleanup Program  
PO Box 47600  
Olympia, WA 98504-7600

---

**Port Gamble Leased Area Site,  
Port Gamble  
Kitsap County, WA**

**Ecology Seeks Public Comment on Draft  
Site Investigation Documents**

Public Comment Period:  
February 28 to March 29, 2011

Open House:  
March 9, 2011  
*Hood Canal Vista Pavilion  
Port Gamble, WA*  
Open house 4:30 pm, presentation 5:30 pm

Facility Site ID #: 1567413

**Help with other formats?**

*If you need this document in a format for the visually impaired, call the Toxics Cleanup Program at (360) 407-7170. Persons with hearing loss can call 711 for Washington Relay Service. Persons with a speech disability can call (877) 833-6341.*