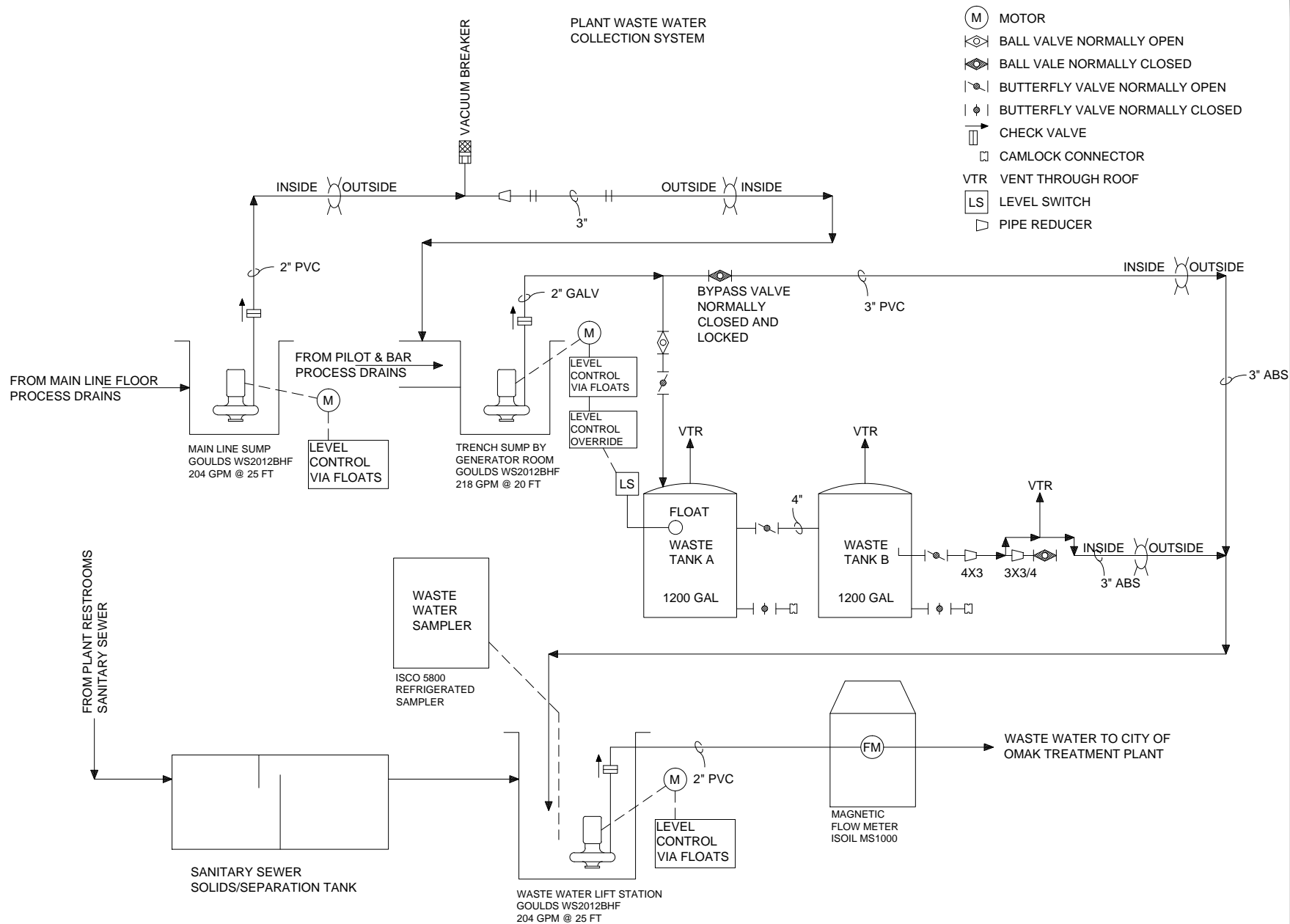


# PLANT WASTE WATER COLLECTION SYSTEM



- (M) MOTOR
- ⊗ BALL VALVE NORMALLY OPEN
- ⊙ BALL VALVE NORMALLY CLOSED
- ⊗ BUTTERFLY VALVE NORMALLY OPEN
- ⊙ BUTTERFLY VALVE NORMALLY CLOSED
- ⊗ CHECK VALVE
- ⊙ CAMLOCK CONNECTOR
- VTR VENT THROUGH ROOF
- LS LEVEL SWITCH
- ▢ PIPE REDUCER

**SunOpta**  
Healthy Roads

1124 5TH AVE. E.  
OMAK, WA 98841  
509.826.5471  
WWW.SUNOPTA.COM

## APPROVAL

DRAWN	SSC	10/13/13
DESIGN		
CHECKED		
APPROVED		

PERMIT NO. ST0009253

WASTE WATER SYSTEM

OMAK, WA

WASTE WATER PID

DWG. No.

P-1

SCALE: NONE

CADFILE:

JOB No.

REV.

A