

Delegation of Authority

Summary for: 2024 Activities

in accordance with the
Memorandum of Agreement
between the
Washington State Department of Ecology
and
Spokane County
effective
September 1, 2014

prepared by
Spokane County
Public Works Department

Hannah Thomascall, E.I.T – Water Reclamation Project
Manager

Amity Holt – Water Reclamation Engineer

Chris Knudson – Sewer Design Project Manager

Mia Suhrbier, E.I.T. – Industrial Pre-Treatment Engineer

March 2024

Delegation of Authority

Summary for: 2024 Activities

Preface: *The Memorandum of Agreement (MOA) between the Washington State Department of Ecology (Ecology) and Spokane County Division of Utilities* (Spokane County) provides delegation of review and approval of some of the engineering activities ordinarily completed by Ecology to Spokane County as authorized by RCW 90.48.110(2). The MOA was signed by the parties on September 8, 2014, and is effective for the period September 1, 2014, through August 31, 202. “Attachment A” of the MOA identifies the party responsible for the review and approval of specific engineering documents required for construction of sewerage collection and treatment systems, improvements or extensions to existing sewerage systems or sewage treatment or disposal plants, and the proposed method of future operations and maintenance of those facilities and industrial pretreatment systems. The MOA also confirms the delegation of review and approval of engineering reports, plans and specifications and operation and maintenance manuals for the federal industrial pretreatment program delegated to Spokane County under 40 CFR Part 403.*

*Division of Utilities – our name has been changed to: “**Public Works Department**”

1.0 Overview of MOA

The Memorandum of Agreement (MOA) is comprised of several sections, summarized below.

1.1 Delegated Activities

As allowed under RCW 90.48.110(2), Spokane County will carry out the responsibility for the duties and functions for the following activities on behalf of Ecology:

- Pretreatment Program
- Wastewater Treatment Facility Improvements
- Collection Systems
- Construction Management
- Review and Approval of Other Plans and Construction Documents

1.2 Other MOA Sections

The MOA also addresses: required submittals; qualifications; standards; maintenance of records; compliance with all laws, regulations and agreements; dispute resolution; process support; amendment, termination and revocation; non-delegated activities; and term.

2.0 Pretreatment Program

Ecology delegated the authority and responsibility to Spokane County to administer: the federal pretreatment program (40 CFR Part 403) as authorized under the Clean Water Act; Chapters 173-208 & 173-240 (sections 110-180) WAC; the State Waste Discharge Permit Program, Chapter 173-216 WAC; and applicable portions of Water Pollution Control, Chapter 90.48 RCW.

2.1 Summary of Annual Pretreatment Activities

Spokane County continues to implement, maintain, enforce and keep its Industrial Pretreatment Program up-to-date. Each year, the County conducted the industrial waste survey for the service area, administered industrial wastewater discharge permits, inspected and monitored the permitted industrial facilities, and took enforcement actions when the permittees were in non-compliance with their individual discharge permits.

Spokane County also prepares an annual report of Industrial Pretreatment Program activities under its National Pollutant Discharge Elimination System (NPDES) Permit WA-0093317. That comprehensive annual report is submitted to Ecology by May 1st of each year under Special Condition S6. A summary of the annual activities is provided in Table 2-1.

Table 2-1. Annual Pretreatment Program Activities Summary

Year ^(a)	Values for Industrial Pretreatment Permits from Spokane County					
	SIU ^(b) Permits	CIU ^(c) Permits	Permits Issued ^(d)	SNC ^(e)	NOV ^(f)	AO ^(g)
2024	7	6	2	0	5	0

(a) Calendar Year: January 1st through December 31st.

(b) Number of Significant Industrial Users (SIU) that hold individual Permits.

(c) Number of SIUs that are also Categorical Industrial Users (CIU).

(d) Number of new or reissued individual Permits each year.

(e) Number of Significant Non-Compliance (SNC) violations each year.

(f) Number of Notice of Violations (NOV) each year.

(g) Number of Administrative Orders (AO) each year.

3.0 Wastewater Treatment Facility Improvements

Ecology delegated the authority and responsibility to Spokane County for engineering review and approval of plans and specifications, construction quality assurance plans, and operation and maintenance manuals, as well as addenda for all collection, transmission and treatment facility projects as set forth in Chapter 173-240 WAC.

As noted in the MOA, Spokane County must maintain updated as-built drawings and will issue a “Declaration of Construction” (Chapter 173-240-090 WAC) for all completed projects. Spokane County must send an electronic version of the Operations & Maintenance Manual, Declaration of Construction, and record drawings for all projects to the Ecology Eastern Regional Office Water Quality Program.

3.1 Operating Wastewater Treatment Facilities

Spokane County utilizes two major regional wastewater treatment facilities and one smaller interim facility to properly handle the sewage discharges of its customers. The operating facilities’ capacities range from large to small as listed in Table 3-1.

Table 3-1. Wastewater Treatment Facilities Utilized by Spokane County

Treatment Facility Name [Permit No.]	Total Capacity MGD^(e)	County’s Capacity MGD^(e)	Type / Status / Comments
RPWRF^{(a)(b)} [WA0024473]	50.0	10.0	Tertiary Treatment, with Membrane Filtration
SCRWRF^(c) [WA0093317]	8.0	8.0	Tertiary Treatment, with Membrane Bioreactors (MBR) <i>(periodically adding operational enhancements)</i>
Latah Creek^(d) [ST8045]	0.09	0.09	Extended Aeration, Activated Sludge Treatment <i>(WA Dept. of Ecology: State Waste Discharge permit)</i>

^(a) Riverside Park Water Reclamation Facility (RPWRF; owned by the City of Spokane).

^(b) RPWRF’s improvements are delegated to the City of Spokane, and are not included in this Report.

^(c) Spokane County Regional Water Reclamation Facility (SCRWRF).

^(d) Hangman Valley / Latah Creek Wastewater Treatment Plant (owned by Spokane County).

^(e) MGD = million gallons per day (nominal average daily design treatment capacity).

3.2 Summary of Annual Improvement Activities by Treatment Facility

Spokane County owns and operates two of the three treatment facilities listed in Table 3-1. A summary of the annual improvement activities for each of the County-owned facilities is provided in Table 3-2.

Table 3-2. Annual Improvement Activities by County Treatment Facility

Facility & Year	Description of Operational Improvements	Submittal Dates: O&M Manual Updates
<i>SCRWRF</i>		
2024	None.	07/31/2023
<i>Latah Creek WWTP</i>		
2024	None.	None.

^(a) All improvements are for Operational enhancement and flexibility. No improvements are for capacity increase.

4.0 Collection System & Pumping Facilities

Ecology delegated the authority and responsibility to Spokane County for engineering review and approval of plans and specifications, construction quality assurance plans, and operation and maintenance manuals, as well as addenda for all collection, transmission and pumping facility projects as set forth in Chapter 173-240 WAC.

As noted in the MOA, Spokane County shall maintain updated as-built drawings and will issue a “Declaration of Construction” (Chapter 173-240-090 WAC) for all completed projects. Spokane County is required to send an electronic version of the O&M Manual, Declaration of Construction, and Record Drawings for all projects to the Ecology Eastern Regional Office Water Quality Program.

Spokane County assumes responsibility for engineering review and approval of conveyance and pumping facilities as indicated in “Attachment A” to the MOA.

4.1 Summary of Annual Collection System & Pump Station Projects

A summary of the annual improvement activities to date for each of the collection system and pump station projects is provided in Table 4-1.

Table 4-1. Annual Collection System Project Summary

Year(s) of Construction	Collection System & Pump Station Improvements	Ecology Submittals		
		O&M Manual	Record Drawings	Declaration of Completion
2020-2021 ^(a)	<p><u>Barker Road Sewer Extension Project, Phase 2</u> The project includes approximately 2,400 linear feet of gravity sewer pipe and service to approximately 12 properties. The area to be served is largely developed so the location of service stubs will be based on consultation with property owners. The project is located in Spokane County, Washington, and is generally located along Barker Road, south of the UP railroad tracks and north of Jackson Drive. Additional areas of work include Euclid Avenue from the Barker Road intersection to about 650' east and Buckeye Ave from Barker Rd to Marlin Drive. (in Section 8, Township 25 North, Range 45 EWM).</p> <ul style="list-style-type: none"> • Design Engineer: Matt D. Morkert, P.E., Century West Engineering • Design Approve: June 10, 2020 • Construction contract awarded: DW Excavating, Inc • Physical Completion Date: August 2, 2023 • Construction management performed by: Spokane County Construction Office • Spokane County Representative: Chris Knudson 	See Note ^(b)	3/1/2025 (submitted with this report)	10/4/2021
<p>Notes:</p> <p>^(a) Phase 2 of the Barker Road Sewer Extension Project was also included in the 2021 Delegation of Authority report, but record drawings were not available at the time. The project is included in this report with the finalized record drawings.</p> <p>^(b) Spokane County operates and maintains its system of sewerage through the County's Wastewater Operations Center. This work force includes 22 staff, 2 Vactor trucks, 2 video inspection crews, 2 repair crews. Pipes are cleaned every 3 years, some more frequent. Pipes are video inspected every 10 years.</p>				

5.0 Construction Management

Under the MOA, Spokane County assumes construction management oversight for Ecology-funded projects supported by the Centennial Clean Water Fund and/or other state funding sources. Insofar as there have been no Ecology-funded projects in the period for this Delegation Report, there are no project eligibility or other applicable activities to report.

6.0 Review & Approval of Other Plans & Construction Documents

Under the MOA, Spokane County is delegated authority to approve the engineering quality assurance plans under WAC 173-240-075, to approve O&M manuals under WAC 173-240-070 – 080 and 173-240-140 – 150, and to approve deviations from the approved plans.

6.1 Summary of “Other” Annual Construction Activities

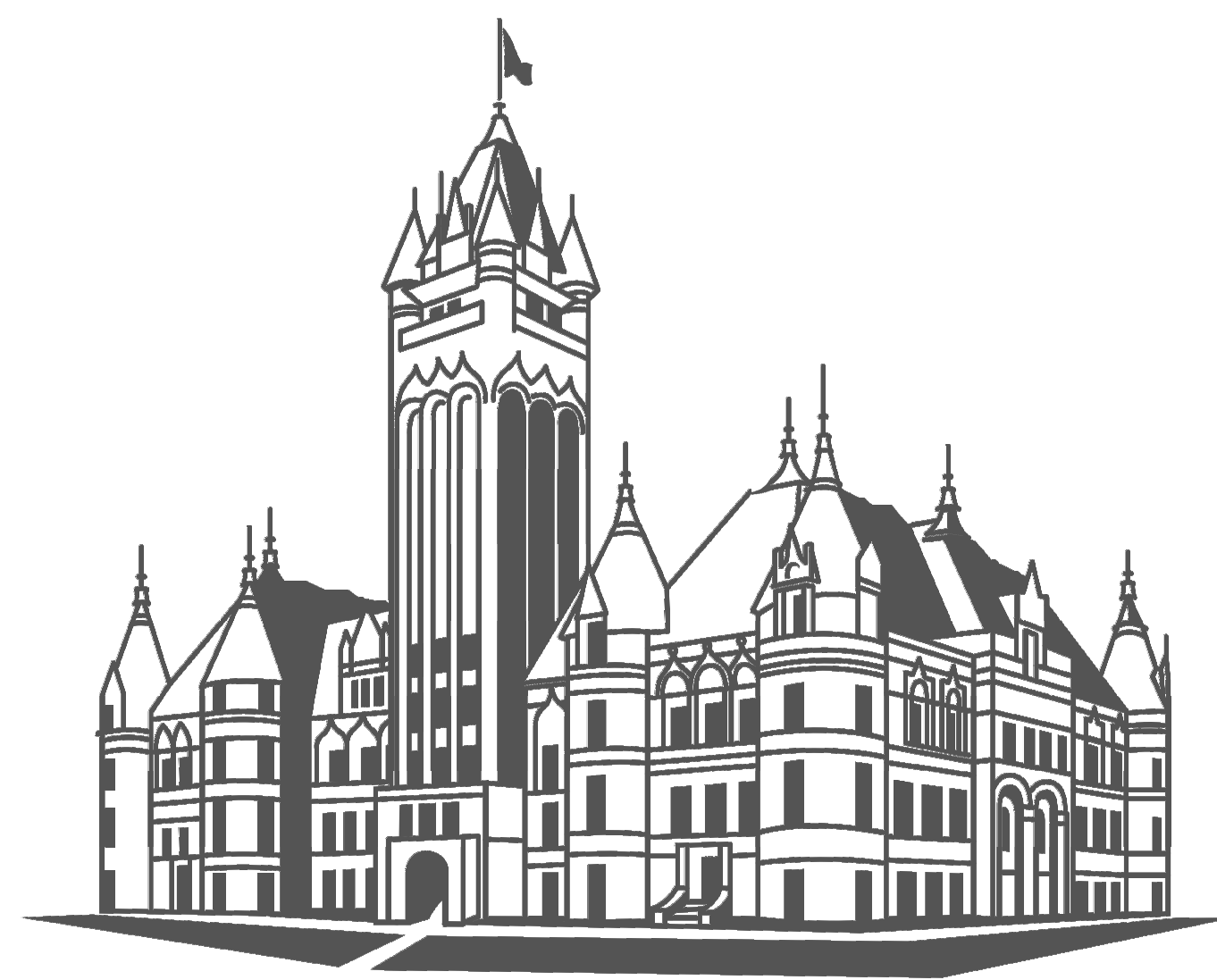
Spokane County directly manages the design and construction of sewer collection system projects as listed in Table 4-1. Additionally, developers and other project proponents design and construct sewer line extensions to the County’s system. For these projects, the County reviews and approves the design documents to ensure that each design:

1. Has been designed and stamped by a licensed professional engineer.
2. Conforms to the County’s general sewer plan.
3. Complies with Ecology’s Criteria for Sewage Works Design.
4. Complies with Spokane County’s Standards for Road & Sewer Construction.

Once the project is physically complete, the responsible licensed engineer signs and stamps the required county certification stating that the project has been constructed in accordance with the approved plans. The County is provided a Bill of Sale from the developer, transferring the new infrastructure into the County’s regional system of sewerage. A one-year warranty is provided for all new sewerage-related components. Once under county ownership, the County assumes operation and maintenance of the new facilities.

Submittal of Record Drawings

Record drawings referenced in this report are submitted with this report and maintained in Spokane County’s files. All record drawings are available upon request from Spokane County.



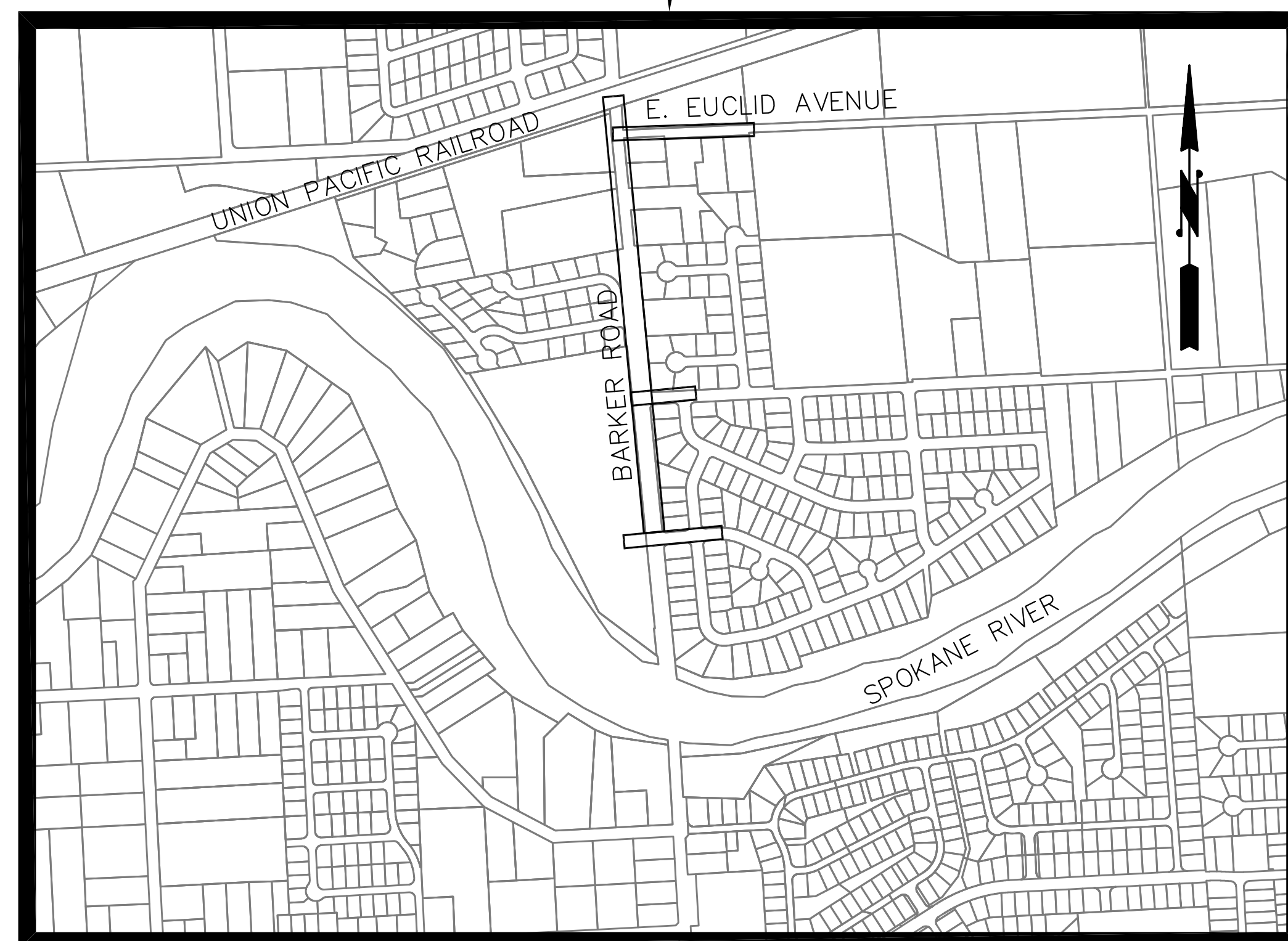
Spokane County
ENVIRONMENTAL SERVICES

BARKER ROAD SEWER EXTENSION, PHASE 2

SANITARY SEWER PROJECT NO. 231C

BID SCHEDULE B

VICINITY MAP



FOR
SPOKANE COUNTY
ENVIRONMENTAL SERVICES
SPOKANE COUNTY, WASHINGTON

RECORD DRAWING

THIS DOCUMENT PROVIDES A SCHEMATIC ILLUSTRATION OF THE SEWER IMPROVEMENTS CONSTRUCTED AND IS NOT AN EXACT REPRESENTATION OF LOCATION OR COMPONENTS. ACTUAL LOCATION SHOULD BE VERIFIED IN THE FIELD.

SPOKANE COUNTY ENVIRONMENTAL SERVICES DEPARTMENT

ENVIRONMENTAL SERVICES DIRECTOR

KEVIN R. COOKE, P.E.

SEWER DESIGN MANAGER

EUGENE A. REPP, P.E.

PROJECT MANAGER

CHRIS KNUDSON



SPOKANE OFFICE
11707 E. MONTGOMERY DRIVE
SPOKANE VALLEY, WA 99206
509.838.3810
509.624.0355 FAX

SPOKANE COUNTY COMMISSIONERS

FIRST DISTRICT

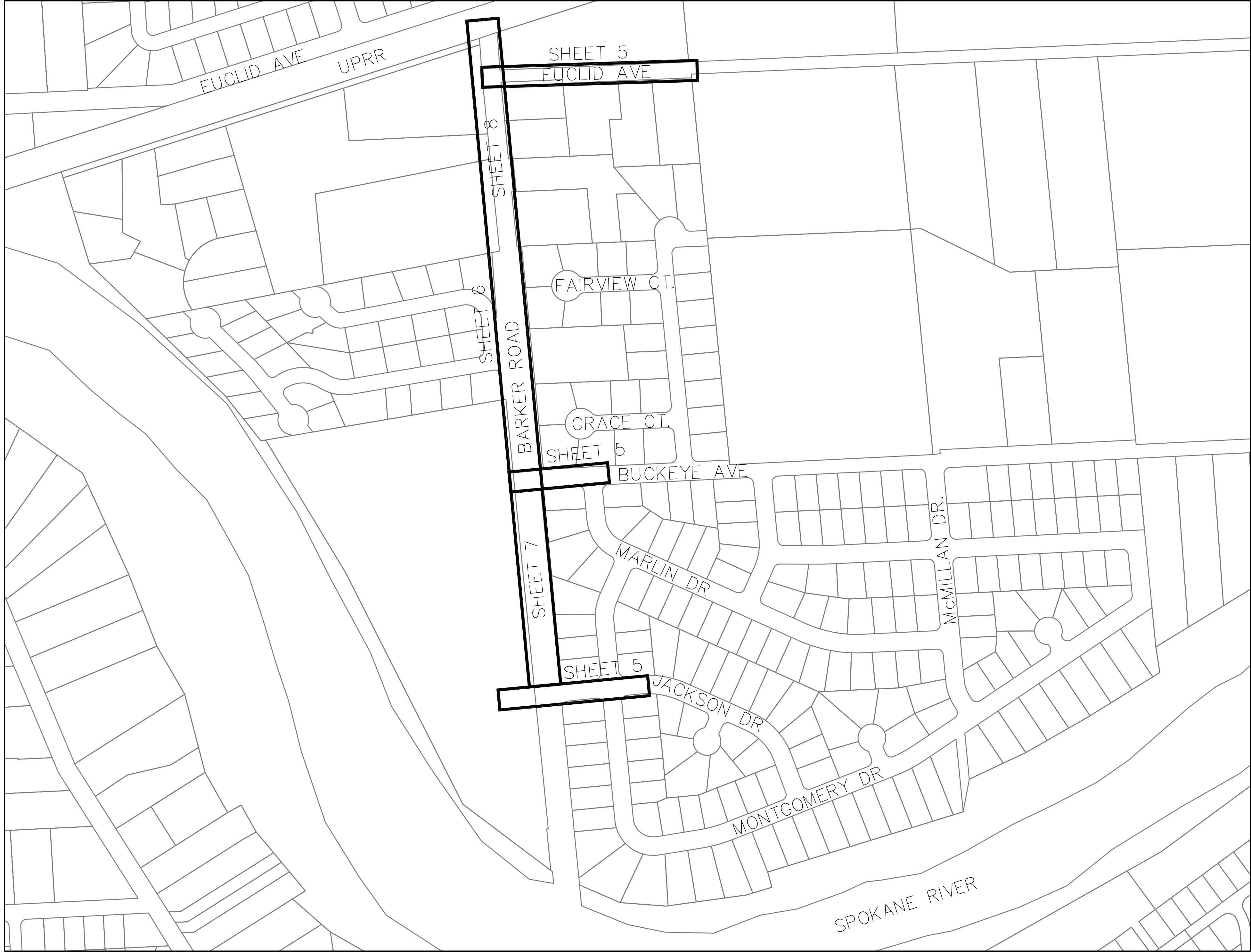
JOSH KERNS

SECOND DISTRICT

MARY L. KUNEY

THIRD DISTRICT

AL FRENCH



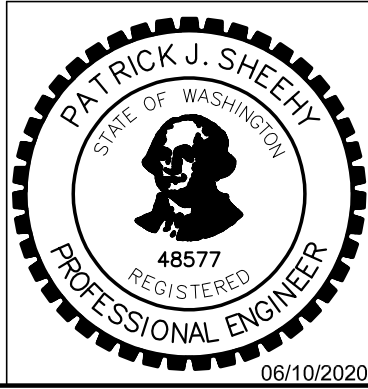
SHEET INDEX	
SHEET NO.	DESCRIPTION
1	COVER, PROJECT LOCATION
2	SHEET INDEX
3	MANHOLE INDEX
4	NOTES & LEGEND
5	EUCLID AVE, BUCKEYE AVE, & JACKSON DRIVE
6	BARKER ROAD GRAVITY SEWER
7	BARKER ROAD FORCE MAIN
8	BARKER ROAD FORCE MAIN
9	DETAILS



Spokane Office
11707 E. Montgomery Drive
Spokane Valley, WA 99208
509.838.3810
509.834.0355 FAX

RECORD DRAWING

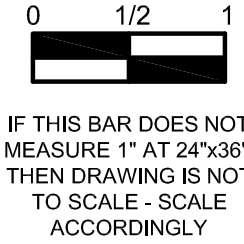
THIS DOCUMENT PROVIDES A SCHEMATIC ILLUSTRATION OF THE SEWER IMPROVEMENTS CONSTRUCTED AND IS NOT AN EXACT REPRESENTATION OF LOCATION OR COMPONENTS. ACTUAL LOCATION SHOULD BE VERIFIED IN THE FIELD.



1	3/11/2025	CLK			RECORD DRAWINGS
No.	Date	By	Ckd.	Appr.	Revision

Drawn By:	Date:
JJB	6/9/20
Designed By:	
PS	6/9/20
Checked By:	
MDM	6/9/20

SCALE	
HORIZONTAL:	1"=200'
VERTICAL:	1"=200'

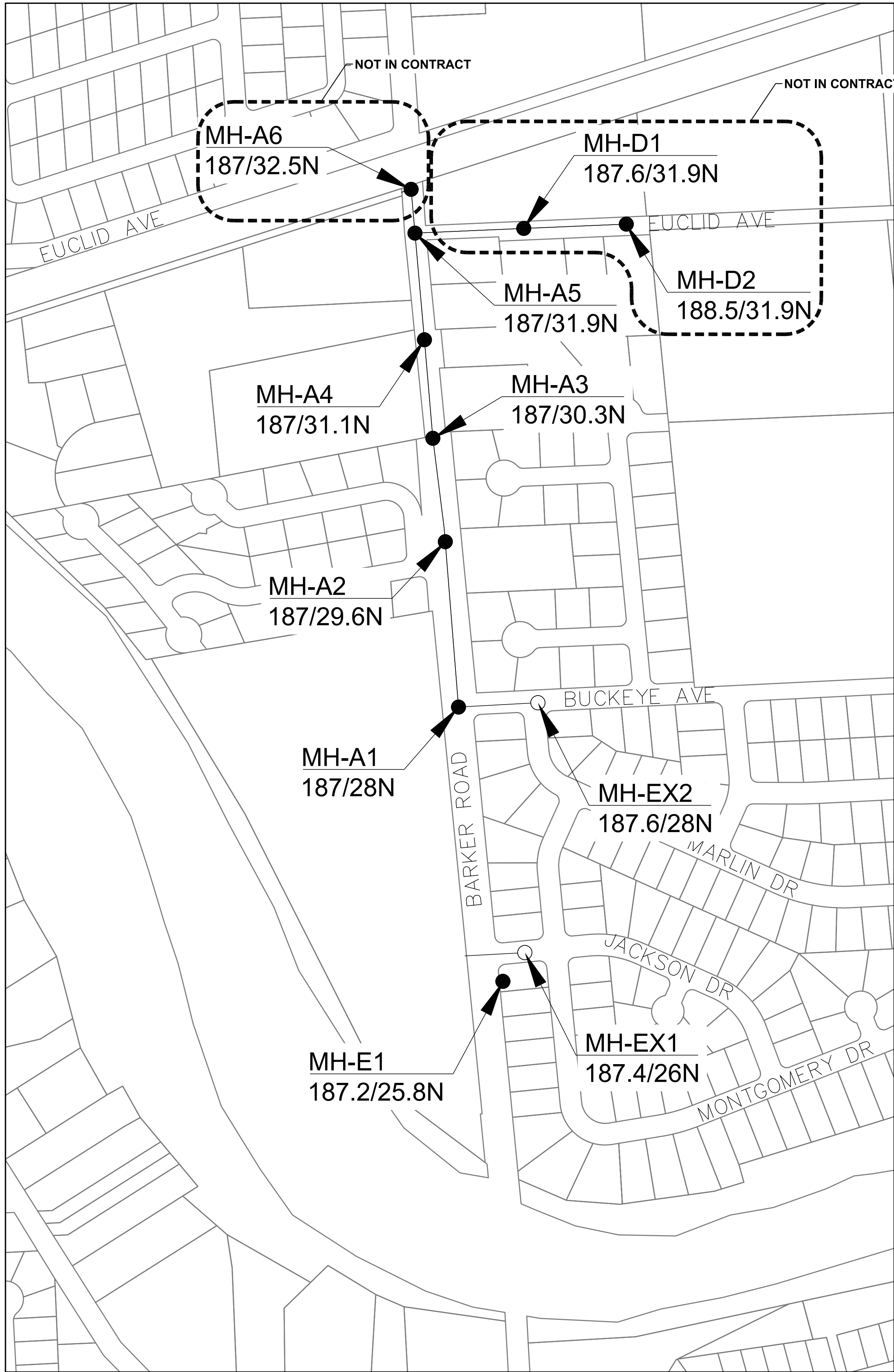


Spokane County
Environmental Services Dept.
1026 W. Broadway Ave.
SPOKANE, WA. 99260-0430
(509) 477-3604

APPROVED: _____
SPOKANE COUNTY
Date: _____

BARKER ROAD SEWER EXTENSION, PHASE 2 #231C
SHEET INDEX
BID # P11445

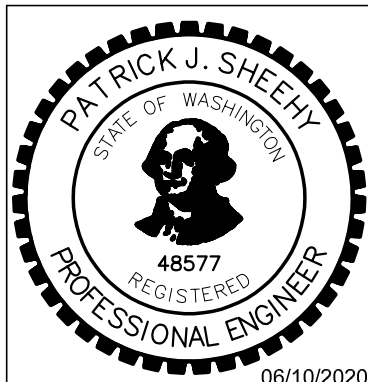
SHEET
2 of 9



SPokane Office
11707 E. MONTGOMERY DRIVE
SPokane Valley, WA 99208
509.838.3810
509.824.0355 FAX

RECORD DRAWING

THIS DOCUMENT PROVIDES A SCHEMATIC ILLUSTRATION OF THE SEWER IMPROVEMENTS CONSTRUCTED AND IS NOT AN EXACT REPRESENTATION OF LOCATION OR COMPONENTS. ACTUAL LOCATION SHOULD BE VERIFIED IN THE FIELD.

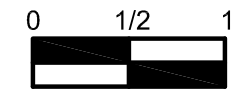


No.	Date	By	Ckd.	Appr.	Revision
1	3/11/2025	CLK			RECORD DRAWINGS

Drawn By:	JJB	Date:	6/9/20
Designed By:	PJS	Date:	6/9/20
Checked By:	MDM	Date:	6/9/20

SCALE

HORIZONTAL: 1"=200'
VERTICAL: 1"=200'



IF THIS BAR DOES NOT MEASURE 1" AT 24"x36", THEN DRAWING IS NOT TO SCALE - SCALE ACCORDINGLY

Spokane County
Environmental Services Dept.
1026 W. Broadway Ave.
SPOKANE, WA. 99260-0430
(509) 477-3604

APPROVED: _____
SPOKANE COUNTY
Date: _____

BARKER ROAD SEWER EXTENSION, PHASE 2 #231C
MANHOLE INDEX
BID # P11445

SHEET

3 of 9

ABBREVIATIONS

PIPE	AC	ASBESTOS CONCRETE	MISC	A.C.	ASPHALT CONCRETE	MISC	MH	MANHOLE
	CI	CAST IRON		CB	CATCH BASIN		MIN.	MINIMUM
	CMP	CORRUGATED METAL PIPE		CFS	CUBIC FEET PER SECOND		N	NORTH
	CSP	CONCRETE		CL	CENTERLINE		N.I.C.	NOT IN CONTRACT
	DI	DUCTILE IRON		C.O.	CLEAN OUT		NO.	NUMBER
	FM	FORCE MAIN		CONC.	CONCRETE		NTS	NOT TO SCALE
	GALV	GALVANIZED STEEL		CONN.	CONNECTION		O.C.	ON CENTER
	PVC	POLYVINYL CHLORIDE PIPE		CRP	COUNTY ROAD PROJECT		P	POWER
	RCP	REINFORCED CONCRETE PIPE		C.Y.	CUBIC YARD		PP	POWER POLE
	STL	STEEL PIPE		D	DEGREE OF CURVE		P.S.I.	POUNDS PER SQUARE INCH
	CTE	COAL-TAR ENAMEL		DEC.	DECIDUOUS		Qc	FULL PIPE CAPACITY FLOW
				DET.	DETAIL		Qd	DESIGN FLOW
				DIA.	DIAMETER		REV.	REVISED
	NB	NO BASEMENT		DIM.	DIMENSION		REQ'D	REQUIRED
	FB	FULL BASEMENT, DAYLIGHT BASEMENT		DW	DRYWELL		RD.	ROAD
BUILDING TYPE	SE	SPLIT ENTRY, SPLIT LEVEL		DWG	DRAWING		R.R.	RAILROAD
				E	EAST		R/W	RIGHT-OF-WAY
				ELEV.	ELEVATION		S	SOUTH OR PIPE SLOPE
				EP	EDGE OF PAVEMENT		SD	STORM DRAIN
				E.W.	EACH WAY		SHT.	SHEET
				EXIST.	EXISTING		SL	SURVEY LINE
				FH	FIRE HYDRANT		SPR	SUMP PUMP RELIEF DRAIN
				FT.	FOOT OR FEET		SS	SANITARY SEWER
				G	GAS		ST	STREET
				GR	GRADE		STA	STATION
				HP	HIGH PRESSURE		STD.	STANDARD
				HWY	HIGHWAY		SW	SIDEWALK
				I.E.	INVERT ELEVATION		SY	SQUARE YARD
				IN.	INCHES		T.B.M.	TEMPORARY BENCH MARK
				L	LENGTH		T.O.P.	TOP OF PIPE
				LF	LINEAL FEET		TEL R	TELEPHONE RISER
				MAX.	MAXIMUM		TYP.	TYPICAL
							T	TELEPHONE
							TV	CABLE TV
							VF	VERTICAL FEET
							W	WEST OR WATER

DATUM



VERTICAL:

ELEVATION DATUM IS NAVD 1988. BASIS OF ELEVATIONS IS WSDOT MONUMENT GPS 32290-152 ELEVATION 2004.88.

HORIZONTAL:

LOCAL COORDINATES:

PROJECT COORDINATES ARE SURFACE COORDINATES AND BASED ON: CONTROL MONUMENT BASE BEING A #4 REBAR WITH A BLUE PLASTIC CAP MARKED "CONTROL PT, PLS 29270" LOCATED IN THE SOUTHWEST QUADRANT OF THE INTERSECTION OF EUCLID AVE WEST AND FLORA ROAD.
N: 270763.547
E: 2541122.466
EL: 2014.38
WHICH HAS 200,000 SUBTRACTED FROM THE NORTHING AND 2,500,000 SUBTRACTED FROM THE EASTING.

NOTES

GENERAL NOTES

- WHERE KNOWN, EXISTING UTILITIES ARE SHOWN ON THE PLANS FOR THE CONVENIENCE OF THE CONTRACTOR. LOCATIONS SHOWN ARE APPROXIMATE AND DEPTHS ARE NOT KNOWN. OTHER UTILITIES MAY EXIST IN THE WORK AREA THAT ARE NOT SHOWN ON THE DRAWINGS. THE CONTRACTOR SHALL VERIFY THE EXISTENCE, LOCATION, NATURE AND IF NECESSARY THE DEPTH OF EXISTING UTILITIES IN THE WORK AREA PRIOR TO CONSTRUCTION. IT SHALL BE THE CONTRACTOR'S RESPONSIBILITY TO PROTECT AND REPAIR, OR HAVE REPAIRED IF DAMAGED, ALL UTILITIES ENCOUNTERED DURING CONSTRUCTION. NOT ALL WATER, ELECTRICAL OR OTHER UTILITY SERVICE LINES OR METERS ARE SHOWN. OVERHEAD UTILITIES ARE NOT SHOWN. GAS SERVICES ARE NOT SHOWN. ALL COSTS RELATED TO SUCH VERIFICATION, PROTECTION AND REPAIR OF EXISTING UTILITIES IS INCIDENTAL TO OTHER BID ITEMS OF WORK. THE ENGINEER MAY ADJUST THE LOCATION OF THE SEWER TO AVOID CONFLICTS WITH EXISTING UTILITIES ONCE ACTUAL LOCATIONS ARE KNOWN. THE CONTRACTOR IS REQUIRED TO CONTACT THE UTILITY LOCATING SERVICE AT 1-800-424-5555 AND SHALL CONTACT ALL AFFECTED UTILITY OWNERS TO CONFIRM THE LOCATION OF UTILITIES BEFORE DIGGING.
- SEPTIC TANK, DRYWELL, AND DRYLINE INFORMATION ARE FROM COUNTY HEALTH DISTRICT OR SPOKANE COUNTY RECORDS AND ARE SHOWN TO INDICATE APPROXIMATE LOCATION IF KNOWN. NEITHER SPOKANE COUNTY NOR ITS ENGINEER IS RESPONSIBLE FOR THE ACCURACY OF LOCATIONS SHOWN.
- ELEVATIONS REFER TO THE DATUM INDICATED ON THIS SHEET.
- THE CONTRACTOR SHALL PROTECT EXISTING DRYWELLS AND DRAINAGE STRUCTURES FROM SOIL INFILTRATION. THE COST OF CLEANING EXISTING DRAINAGE STRUCTURES SUBJECT TO SOIL INFILTRATION AS A RESULT OF THE CONTRACTORS WORK SHALL BE INCIDENTAL TO OTHER BID ITEMS.
- WHERE NEW PIPE IS TO CROSS UNDER OR OVER AN EXISTING UTILITY IT SHALL BE THE CONTRACTOR'S RESPONSIBILITY TO EXPOSE, AS NECESSARY, THE EXISTING UTILITY WELL IN ADVANCE OF HIS TRENCHING AND PIPE LAYING ACTIVITIES SO THAT IF NECESSARY AN ADJUSTMENT TO GRADE FOR THE NEW PIPELINE CAN BE PROPOSED BY THE CONTRACTOR AND APPROVED BY THE ENGINEER.

SANITARY SEWER NOTES

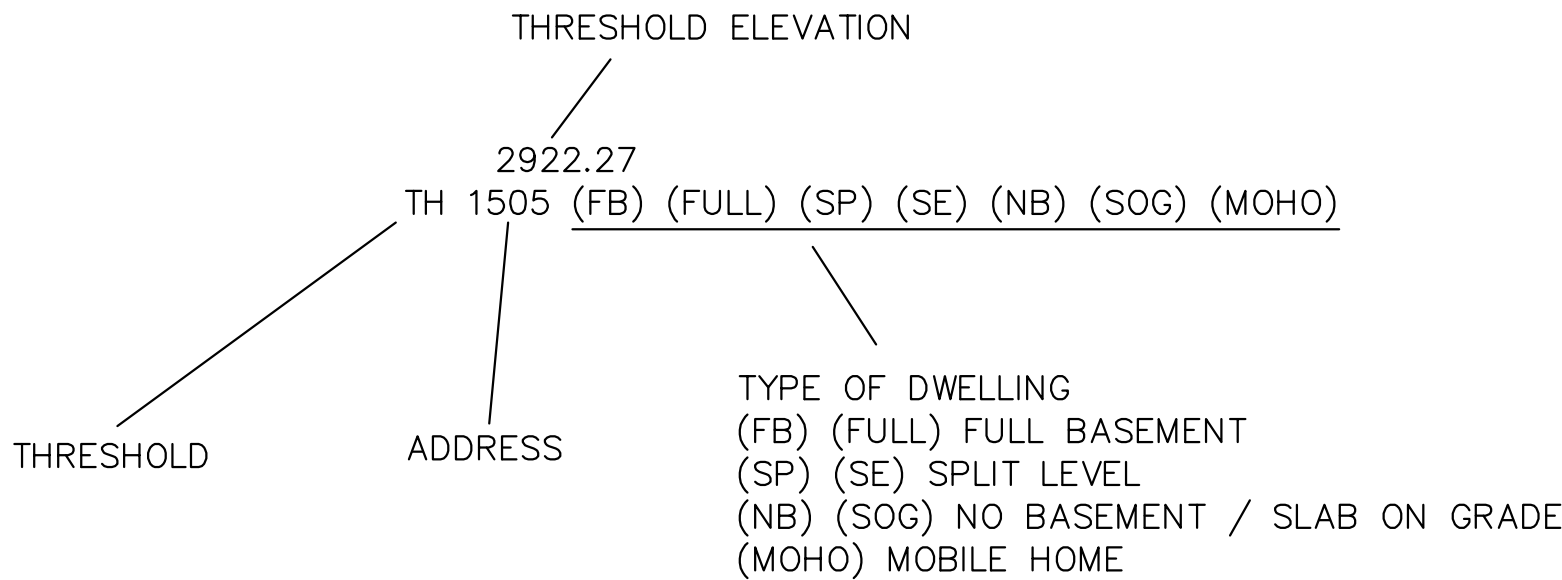
- MANHOLE LOCATIONS INDICATED ON THE DRAWINGS ARE REFERENCED OFF THE CENTERLINE (CL) OR THE SURVEY LINE (SL) AS SHOWN. IF A SURVEY LINE IS REFERENCED IT IS BECAUSE IT IS NOT THE CENTERLINE OF THE RIGHT OF WAY. THE CONTRACTOR'S ATTENTION IS DIRECTED TO THE RIGHT OF WAY DIMENSIONS AND CENTERLINE OR SURVEY LINE OFFSETS SHOWN ON EACH SHEET OF THE DRAWINGS.
- SIDE SEWER TEES SHALL BE A MINIMUM OF 5 FT. FROM WALL OF MANHOLE, EXCEPT WHERE SPECIFICALLY SHOWN CONNECTING TO THE MANHOLE.
- SIDE SEWERS SHALL BE INSTALLED TO THE PROPERTY LINE (SEE STANDARD PLAN U-17). LENGTHS GIVEN ON THE PLAN SHEETS ARE APPROXIMATE. WHERE SIDEWALKS OR CURBS EXIST, OR AS DIRECTED IN THE FIELD BY THE ENGINEER, THE SIDE SEWER SHALL EXTEND BEYOND THE BACK OF THE SIDEWALK OR CURBS AT A MINIMUM LENGTH EQUAL TO THE DEPTH OF THE SIDE SEWER BELOW THE EXISTING GROUND.
- SIDE SEWER I.E. SHOWN ON THE PLANS SHALL BE PROVIDED AT THE PROPERTY LINE OR AS INDICATED ON THE PLANS WITH THE EXCEPTIONS NOTED BELOW. WHERE POSSIBLE OR UNLESS OTHERWISE NOTED ON THE DRAWINGS, SIDE SEWERS SHALL BE INSTALLED WITH A MINIMUM OF 8 FT. OF COVER WITHIN THE PUBLIC RIGHT-OF-WAY. SEE ALSO NOTE 5 BELOW.
- THE SIDE SEWER INVERT ELEVATIONS SHOWN ON THE DRAWNGS ARE CALCULATED USING THE THRESHOLD ELEVATION OF THE HOUSE OR BUILDING AND AN ESTIMATED LOWEST FLOOR ELEVATION. IN SOME CASES THIS I.E. MAY RESULT IN A SIDE SEWER DEPTH AT THE PROPERTY LINE OF LESS THAN 8 FT. DEEP DUE TO EXISTING GROUND ELEVATIONS WHICH ARE NOT KNOWN. THE CONTRACTOR SHALL DETERMINE IN THE FIELD THE SIDE SEWER DEPTH BELOW EXISTING GRADE AT THE PROPERTY LINE AND WITHIN THE RIGHT OF WAY PRIOR TO CONSTRUCTING THE LINE. IF IT IS LESS THAN 8 FT. DEEP, THE CONTRACTOR SHALL LOWER THE I.E. AND CONSTRUCT THE SIDE SEWER PER STANDARD PLAN U-17 TO PROVIDE A MINIMUM DEPTH OF 8 FT. AT THE PROPERTY LINE AND WITHIN THE RIGHT OF WAY, IF POSSIBLE.
- CONTRACTOR SHALL NOT DISTURB AREAS OUTSIDE EXISTING RIGHT-OF-WAY OR TEMPORARY CONSTRUCTION EASEMENTS, WITHOUT WRITTEN PERMISSION FROM THE AFFECTED PROPERTY OWNER OR OWNERS.
- LOWEST FLOOR ELEVATIONS SHOWN IN PROFILE VIEW WERE CALCULATED AS FOLLOWS:

-HOUSE WITH BASEMENT = 8.5' BELOW THRESHOLD ELEVATION
-SPLIT-LEVEL HOUSE = 5' BELOW THRESHOLD ELEVATION
- HOUSE WITHOUT BASEMENT = EQUAL TO THRESHOLD ELEVATION

- SIDSEWER TEES SHALL BE "TYPE A" UNLESS NOTED OTHERWISE ON THE DRAWINGS OR DIRECTED BY SPOKANE COUNTY REPRESENTATIVE.
- MANHOLE LID ELEVATIONS ARE APPROXIMATE, FINAL MANHOLE LID ELEVATIONS WILL BE ADJUSTED TO CONFORM WITH REPLACED PAVEMENT ELEVATIONS DURING CONSTRUCTION.

TRAFFIC CONTROL NOTES

- GENERAL TRAFFIC DETAIL ROUTES AND PLANS ARE PROVIDED IN THE CONTRACT DOCUMENTS. THESE ARE FOR GENERAL GUIDANCE TO THE CONTRACTOR ONLY. THE CONTRACTOR SHALL SUBMIT A MORE DETAILED TRAFFIC PLAN TO THE ENGINEER FOR REVIEW AND APPROVAL. SEE THE CONTRACT DOCUMENTS FOR TRAFFIC CONTROL REQUIREMENTS.
- CONTRACTOR SHALL COMPLY WITH ALL LOCAL, COUNTY , AND STATE REGULATIONS PERTAINING TO THE CLOSING OF PUBLIC STREETS DURING CONSTRUCTION.



HOUSE DESIGNATION EXAMPLE

LEGEND

DESCRIPTION

UTILITIES

GAS

GAS LINE (BURIED)

GAS VALVE

POWER

LIGHT POLE

POWER POLE

GUY WIRE

POWER VAULT

POWER LINE (OVERHEAD)

SEWER

SANITARY SEWER PIPE

SANITARY FORCE MAIN

SANITARY SEWER PIPE (shown on another sheet)

SANITARY SEWER MANHOLE

SEPTIC TANK

PROJECT BOUNDARY

STORM DRAIN

STORM DRAIN DRYWELL

STORM DRAIN CATCH BASIN

STORM DRAIN PIPE

TELEPHONE

FIBER OPTIC CABLE (BURIED)

TELEPHONE RISER

WATER

WATER SERVICE

WATER PIPE

WATER VALVE

WATER METER

FIRE HYDRANT

WATER SHUT OFF

EXISTING

PROPOSED

DESCRIPTION

MISC

SURVEY

R/W LINE - PROPERTY LINE

T.B.M. LOCATION AND NUMBER

SURFACE FEATURES

FENCE

CURB

PAVED ROAD

GRAVEL ROAD

PATH

TREES, SHRUBS

MAILBOX

BUILDING WITH ADDRESS

AND BUILDING TYPE

(SEE ABBREVIATIONS)

BUILDING WITH EXISTING DRYLINE

SIDE SEWER TO BE

CONNECTED IN THIS PROJECT

BOLLARD

TRAFFIC

SIGN

PROFILE

GROUND LINE

BUILDING ADDRESS WITH

LOWEST FLOOR ELEVATION

EXISTING

PROPOSED

X X

=====

PAVED ROAD

GRAVEL ROAD

PATH

TREES, SHRUBS

MAILBOX

BUILDING WITH ADDRESS

AND BUILDING TYPE

(SEE ABBREVIATIONS)

BUILDING WITH EXISTING DRYLINE

SIDE SEWER TO BE

CONNECTED IN THIS PROJECT

BOLLARD

TRAFFIC

SIGN

PROFILE

GROUND LINE

BUILDING ADDRESS WITH

LOWEST FLOOR ELEVATION

10221
1964.7



Drawn By:	Date:
JJB	6/9/20
Designed By:	
PJS	6/9/20
Checked By:	
MDM	6/9/20

SCALE	
HORIZONTAL:	N.T.S.
VERTICAL:	N.T.S.

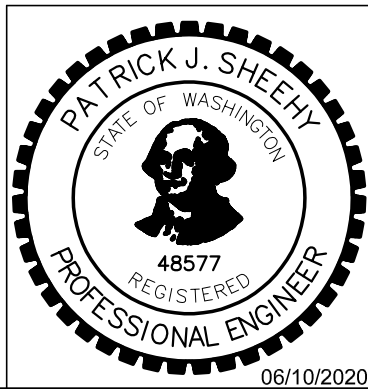
Spokane County
Environmental Services Dept.
1026 W. Broadway Ave.
SPOKANE, WA. 99260-0430
(509) 477-3604

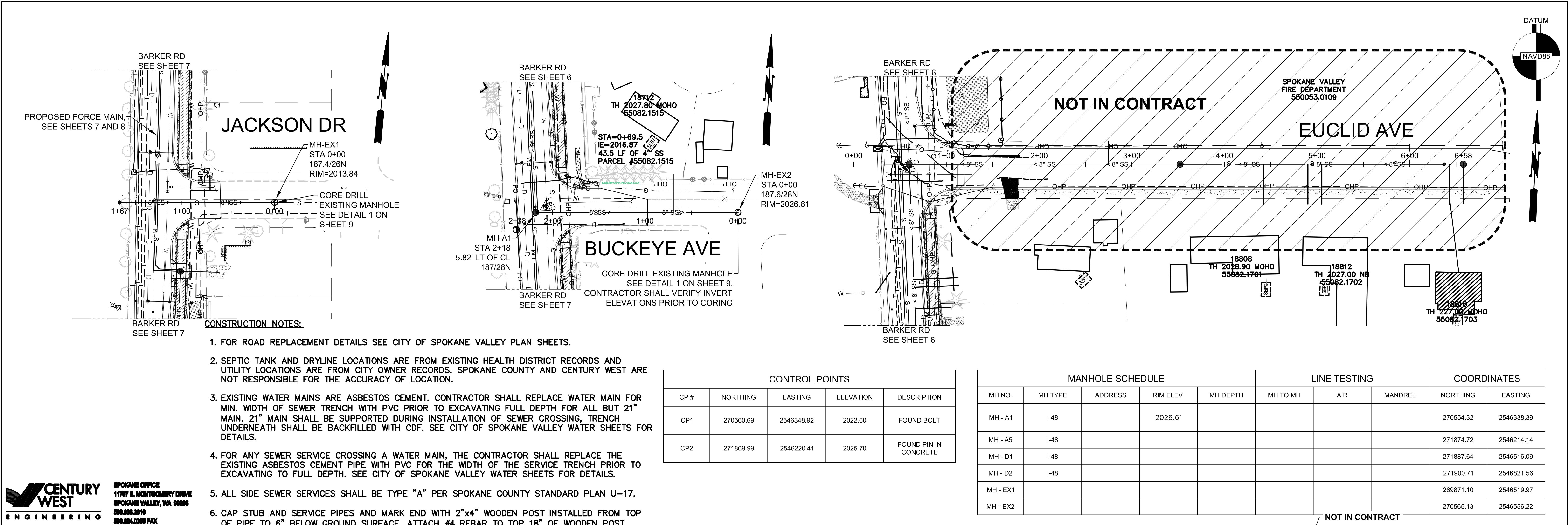
APPROVED: _____
SPOKANE COUNTY

Date: _____

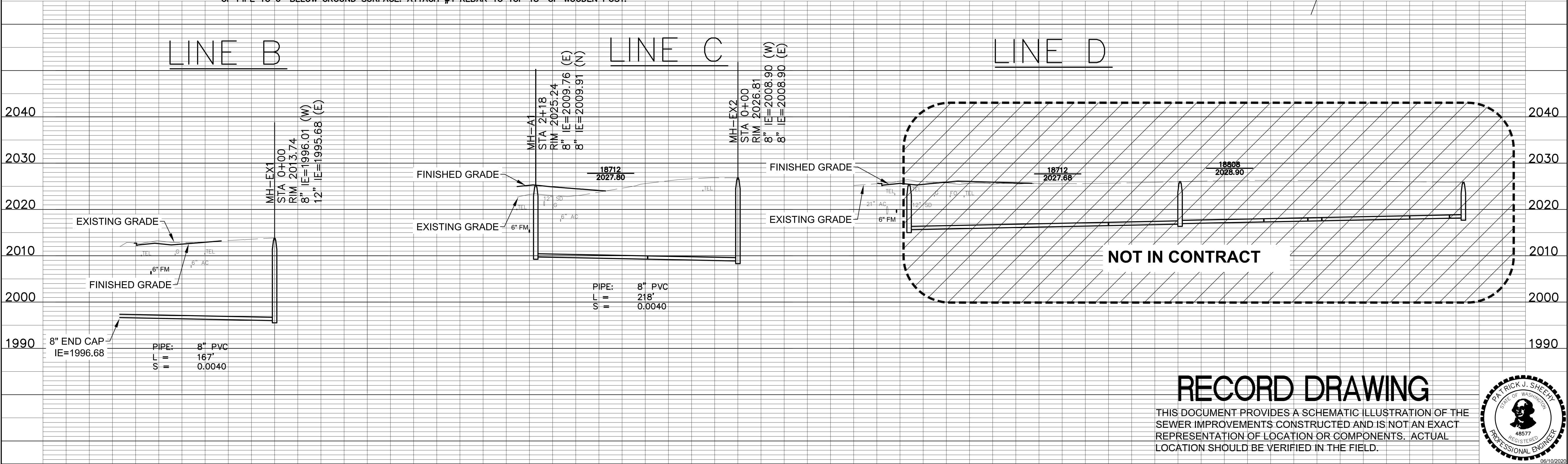
BARKER ROAD SEWER EXTENSION, PHASE 2 #231C
NOTES & LEGEND
BID # P11445

SHEET
4 of 9



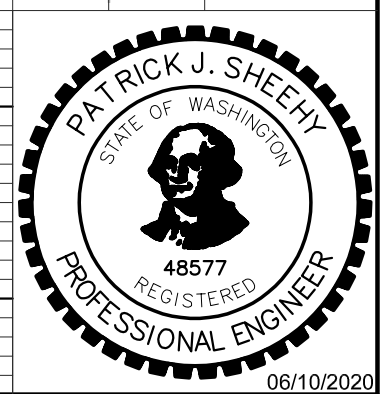


SPOKANE OFFICE
11707 E. MONTGOMERY DRIVE
SPOKANE VALLEY, WA 99208
509.838.0910
509.824.0055 FAX

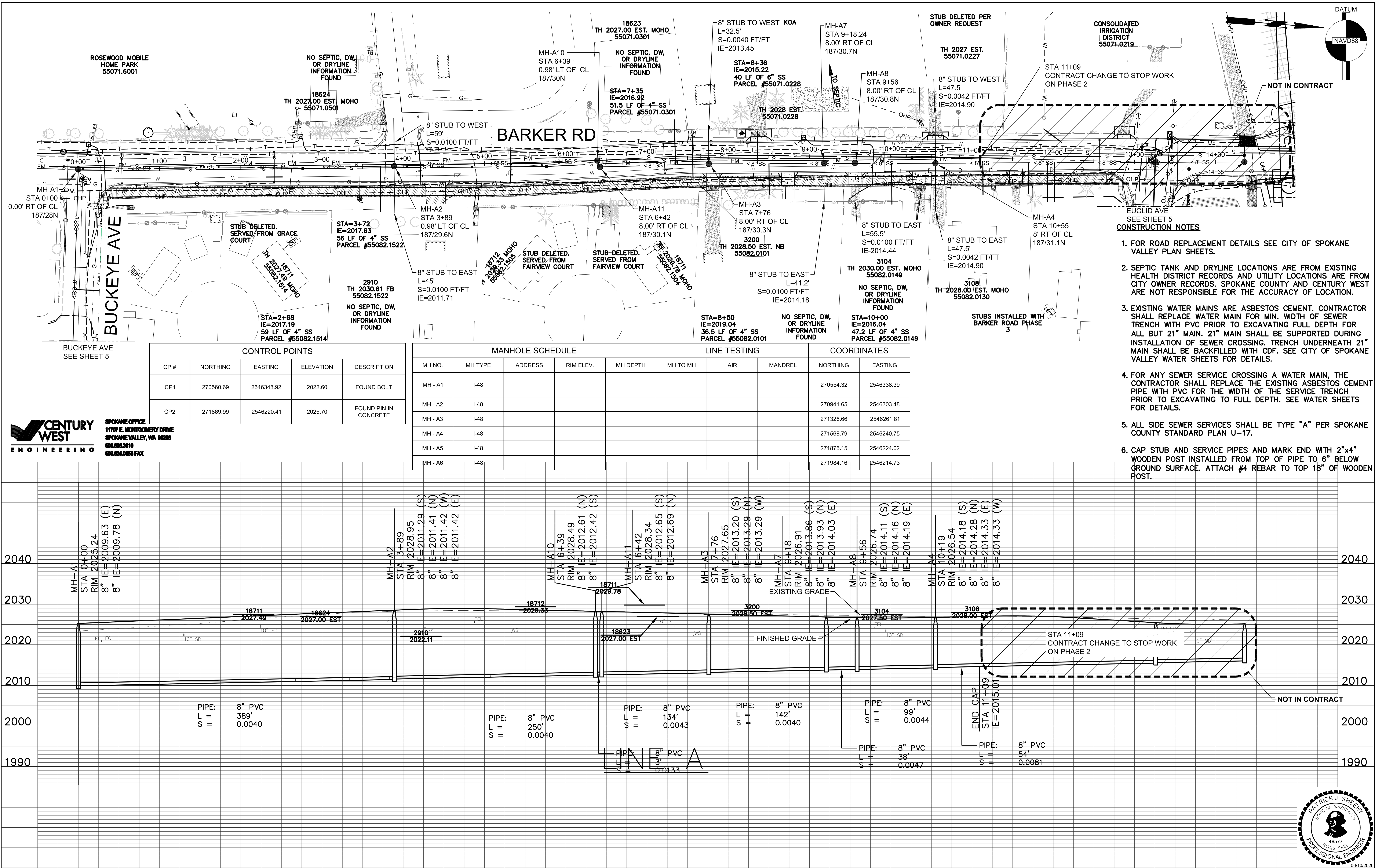


RECORD DRAWING

THIS DOCUMENT PROVIDES A SCHEMATIC ILLUSTRATION OF THE SEWER IMPROVEMENTS CONSTRUCTED AND IS NOT AN EXACT REPRESENTATION OF LOCATION OR COMPONENTS. ACTUAL LOCATION SHOULD BE VERIFIED IN THE FIELD.



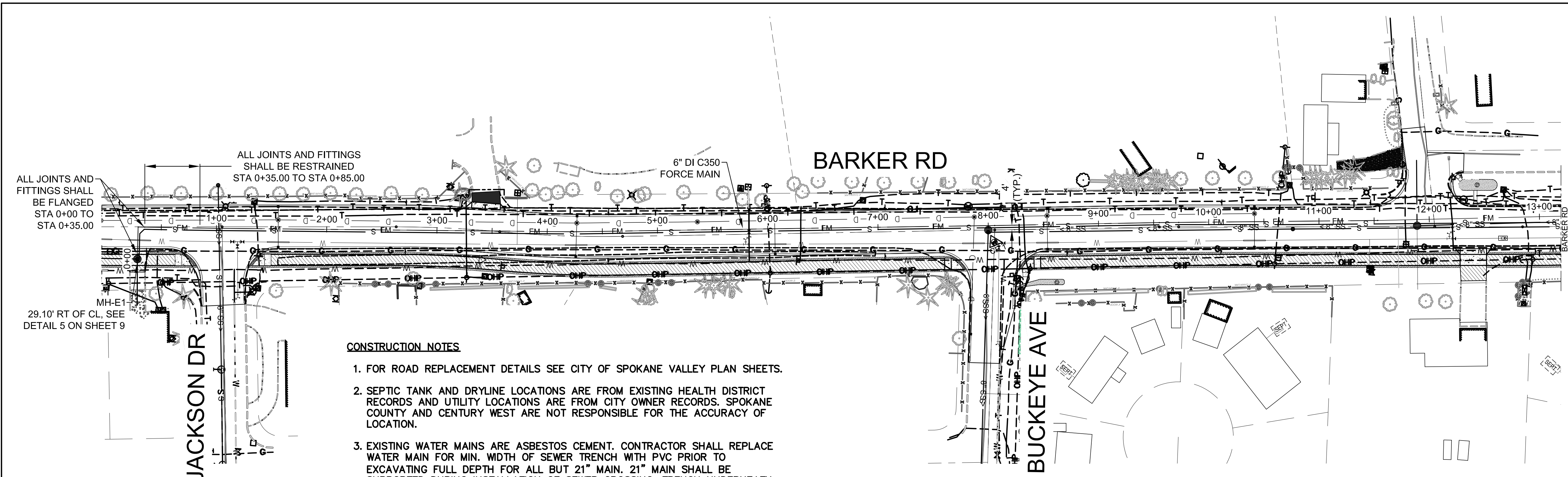
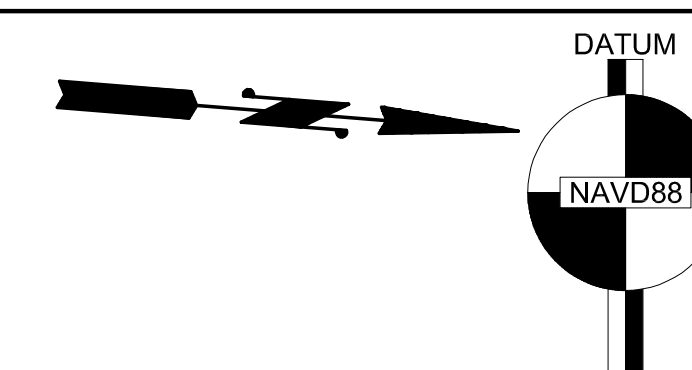
2+00						1+00						0+00						2+00						1+00						0+00						0+00						1+00						2+00						3+00						4+00						5+00						6+00																																																																																																																																																																																																																																																																																																																																																																																																																																																																																																																																																																																																																																																																																																																																																																																																																																																																																																																																																																																																																																																																																																																																																																																																																																																																																																					



CONTROL POINTS				
CP #	NORTHING	EASTING	ELEVATION	DESCRIPTION
CP1	270560.69	2546348.92	2022.60	FOUND BOLT
CP2	271869.99	2546220.41	2025.70	FOUND PIN IN CONCRETE


MANHOLE SCHEDULE					LINE TESTING			COORDINATES	
MH NO.	MH TYPE	ADDRESS	RIM ELEV.	MH DEPTH	MH TO MH	AIR	MANDREL	NORTHING	EASTING
MH - A1	I-48							270554.32	2546338.39
MH - A2	I-48							270941.65	2546303.48
MH - A3	I-48							271326.66	2546261.81
MH - A4	I-48							271568.79	2546240.75
MH - A5	I-48							271875.15	2546224.02
MH - A6	I-48							271984.16	2546214.73

- CONSTRUCTION NOTES**
- FOR ROAD REPLACEMENT DETAILS SEE CITY OF SPOKANE VALLEY PLAN SHEETS.
 - SEPTIC TANK AND DRYLINE LOCATIONS ARE FROM EXISTING HEALTH DISTRICT RECORDS AND UTILITY LOCATIONS ARE FROM CITY OWNER RECORDS. SPOKANE COUNTY AND CENTURY WEST ARE NOT RESPONSIBLE FOR THE ACCURACY OF LOCATION.
 - EXISTING WATER MAINS ARE ASBESTOS CEMENT. CONTRACTOR SHALL REPLACE WATER MAIN FOR MIN. WIDTH OF SEWER TRENCH WITH PVC PRIOR TO EXCAVATING FULL DEPTH FOR ALL BUT 21" MAIN. 21" MAIN SHALL BE SUPPORTED DURING INSTALLATION OF SEWER CROSSING. TRENCH UNDERNEATH 21" MAIN SHALL BE BACKFILLED WITH CDF. SEE CITY OF SPOKANE VALLEY WATER SHEETS FOR DETAILS.
 - FOR ANY SEWER SERVICE CROSSING A WATER MAIN, THE CONTRACTOR SHALL REPLACE THE EXISTING ASBESTOS CEMENT PIPE WITH PVC FOR THE WIDTH OF THE SERVICE TRENCH PRIOR TO EXCAVATING TO FULL DEPTH. SEE WATER SHEETS FOR DETAILS.
 - ALL SIDE SEWER SERVICES SHALL BE TYPE "A" PER SPOKANE COUNTY STANDARD PLAN U-17.
 - CAP STUB AND SERVICE PIPES AND MARK END WITH 2"x4" WOODEN POST INSTALLED FROM TOP OF PIPE TO 6" BELOW GROUND SURFACE. ATTACH #4 REBAR TO TOP 18" OF WOODEN POST.



CONSTRUCTION NOTES

1. FOR ROAD REPLACEMENT DETAILS SEE CITY OF SPOKANE VALLEY PLAN SHEETS.
2. SEPTIC TANK AND DRYLINE LOCATIONS ARE FROM EXISTING HEALTH DISTRICT RECORDS AND UTILITY LOCATIONS ARE FROM CITY OWNER RECORDS. SPOKANE COUNTY AND CENTURY WEST ARE NOT RESPONSIBLE FOR THE ACCURACY OF LOCATION.
3. EXISTING WATER MAINS ARE ASBESTOS CEMENT. CONTRACTOR SHALL REPLACE WATER MAIN FOR MIN. WIDTH OF SEWER TRENCH WITH PVC PRIOR TO EXCAVATING FULL DEPTH FOR ALL BUT 21" MAIN. 21" MAIN SHALL BE SUPPORTED DURING INSTALLATION OF SEWER CROSSING. TRENCH UNDERNEATH 21" MAIN SHALL BE BACKFILLED WITH CDF. SEE CITY OF SPOKANE VALLEY WATER SHEETS FOR DETAILS.
4. ALL PIPE AND FITTINGS FOR FORCE MAIN SHALL CONFORM TO ASTM A746-03 AND ANSI/AWWA C150/A21.51. ALL PIPE AND FITTINGS SHALL BE LINED WITH CERAMIC EPOXY, PROTECTO 401 BY INDURON PROTECTIVE COATINGS OR APPROVED EQUAL. ALL RESTRAINED JOINT PIPE SHALL BE TR FLEX BY US PIPE OR APPROVED EQUAL. ALL UNRESTRAINED PIPE SHALL BE TYTON JOINT BY US PIPE OR APPROVED EQUAL.

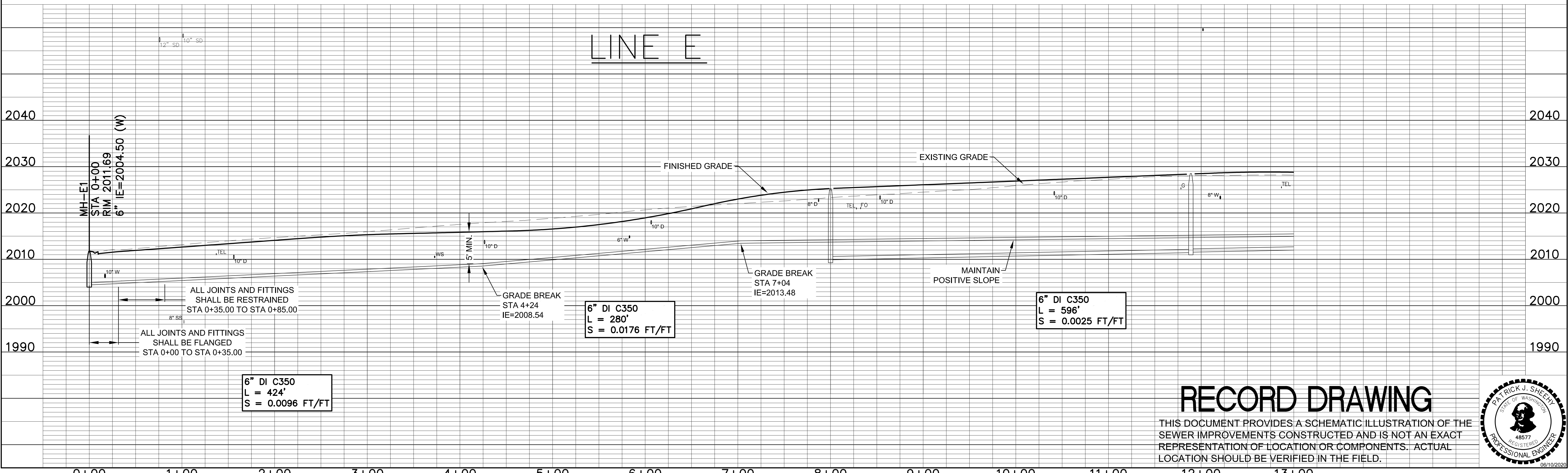


CENTURY WEST
ENGINEERING

SPokane Office
11707 E. MONTGOMERY DRIVE
SPOKANE VALLEY, WA 99208
509.698.2610
509.694.0995 FAX

CONTROL POINTS				
CP #	NORTHING	EASTING	ELEVATION	DESCRIPTION
CP1	270560.69	2546348.92	2022.60	FOUND BOLT
CP2	271869.99	2546220.41	2025.70	FOUND PIN IN CONCRETE

MANHOLE SCHEDULE					LINE TESTING			COORDINATES	
MH NO.	MH TYPE	ADDRESS	RIM ELEV.	MH DEPTH	MH TO MH	AIR	MANDREL	NORTHING	EASTING
MH - E1	I-60							269787.18	2546426.19

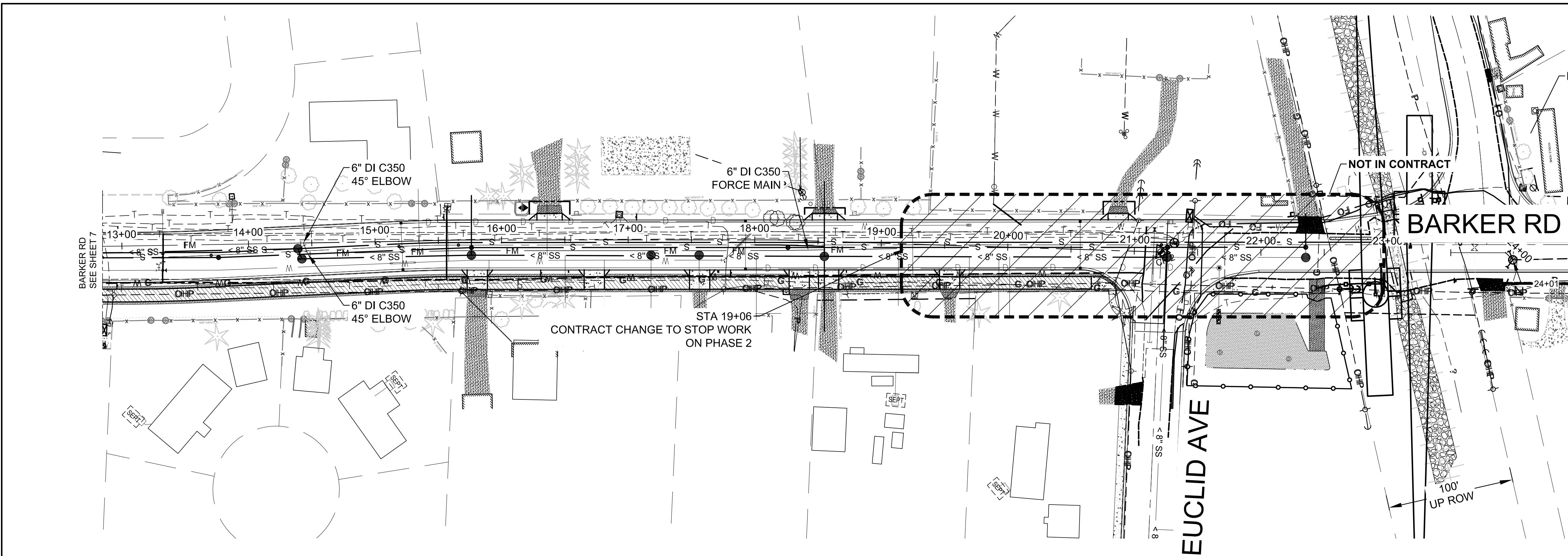


RECORD DRAWING

THIS DOCUMENT PROVIDES A SCHEMATIC ILLUSTRATION OF THE SEWER IMPROVEMENTS CONSTRUCTED AND IS NOT AN EXACT REPRESENTATION OF LOCATION OR COMPONENTS. ACTUAL LOCATION SHOULD BE VERIFIED IN THE FIELD.



0+00 1+00 2+00 3+00 4+00 5+00 6+00 7+00 8+00 9+00 10+00 11+00 12+00 13+00																			
1					Drawn By: JJB Date: 6/9/20					SCALE					Spokane County Environmental Services Dept. 1026 W. Broadway Ave. SPOKANE, WA. 99260-0430 (509) 477-3604				
3/12/25					Designed By: PJS Date: 6/9/20					HORIZONTAL: 1"=50'					APPROVED: SPOKANE COUNTY				
By: CLK					Checked By: MDM Date: 6/9/20					VERTICAL: 1"=10'					Date: _____				
RECORD DRAWINGS					Revision					BARKER ROAD SEWER EXTENSION PHASE 2 #231C BARKER ROAD FORCE MAIN STA 0+00 TO STA 13+00					SHEET 7 of 9				

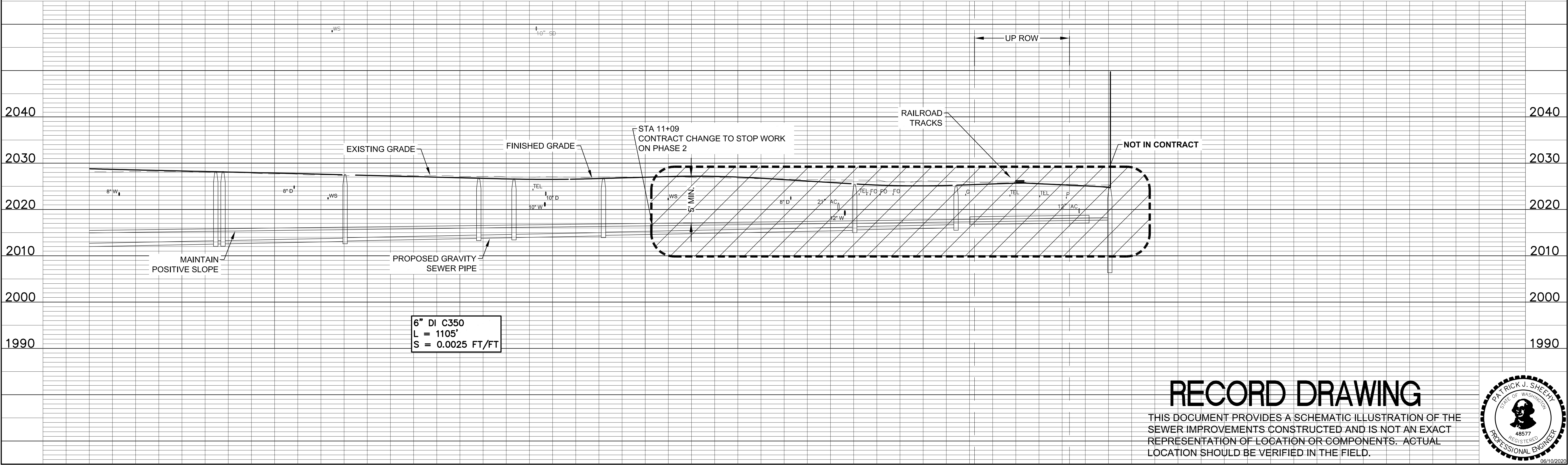


- CONSTRUCTION NOTES**
- FOR ROAD REPLACEMENT DETAILS SEE CITY OF SPOKANE VALLEY PLAN SHEETS.
 - SEPTIC TANK AND DRYLINE LOCATIONS ARE FROM EXISTING HEALTH DISTRICT RECORDS AND UTILITY LOCATIONS ARE FROM CITY OWNER RECORDS. SPOKANE COUNTY AND CENTURY WEST ARE NOT RESPONSIBLE FOR THE ACCURACY OF LOCATION.
 - EXISTING WATER MAINS ARE ASBESTOS CEMENT. CONTRACTOR SHALL REPLACE WATER MAIN FOR MIN. WIDTH OF SEWER TRENCH WITH PVC PRIOR TO EXCAVATING FULL DEPTH FOR ALL BUT 21" MAIN. 21" MAIN SHALL BE SUPPORTED DURING INSTALLATION OF SEWER CROSSING. TRENCH UNDERNEATH 21" MAIN SHALL BE BACKFILLED WITH CDF. SEE CITY OF SPOKANE VALLEY WATER SHEETS FOR DETAILS.
 - ALL PIPE AND FITTINGS FOR FORCE MAIN SHALL CONFORM TO ASTM A746-03 AND ANSI/AWWA C150/A21.51. ALL PIPE AND FITTINGS SHALL BE LINED WITH CERAMIC EPOXY, PROTECTO 401 BY INDURON PROTECTIVE COATINGS OR APPROVED EQUAL. ALL RESTRAINED JOINT PIPE SHALL BE TR FLEX BY US PIPE OR APPROVED EQUAL. ALL UNRESTRAINED PIPE SHALL BE TYTON JOINT BY US PIPE OR APPROVED EQUAL.
 - ALL WORK WITHIN UNION PACIFIC (UP) RAILROAD RIGHT-OF-WAY SHALL COMPLY WITH UP PERMIT REQUIREMENTS AND AMERICAN RAILWAY ENGINEERING AND MAINTENANCE-OF-WAY ASSOCIATION (AREMA) STANDARDS.

CONTROL POINTS				
CP #	NORTHING	EASTING	ELEVATION	DESCRIPTION
CP1	270560.69	2546348.92	2022.60	FOUND BOLT
CP2	271869.99	2546220.41	2025.70	FOUND PIN IN CONCRETE

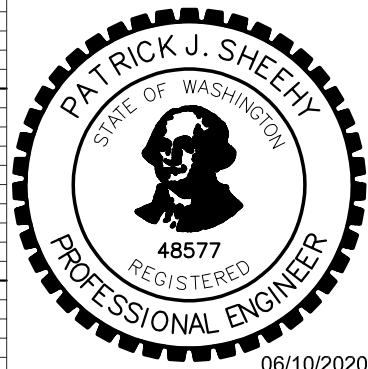
CENTURY WEST
ENGINEERING

SPokane Office
11707 E. MONTGOMERY DRIVE
SPOKANE VALLEY, WA 99208
509.698.2610
509.694.0555 FAX



RECORD DRAWING

THIS DOCUMENT PROVIDES A SCHEMATIC ILLUSTRATION OF THE SEWER IMPROVEMENTS CONSTRUCTED AND IS NOT AN EXACT REPRESENTATION OF LOCATION OR COMPONENTS. ACTUAL LOCATION SHOULD BE VERIFIED IN THE FIELD.

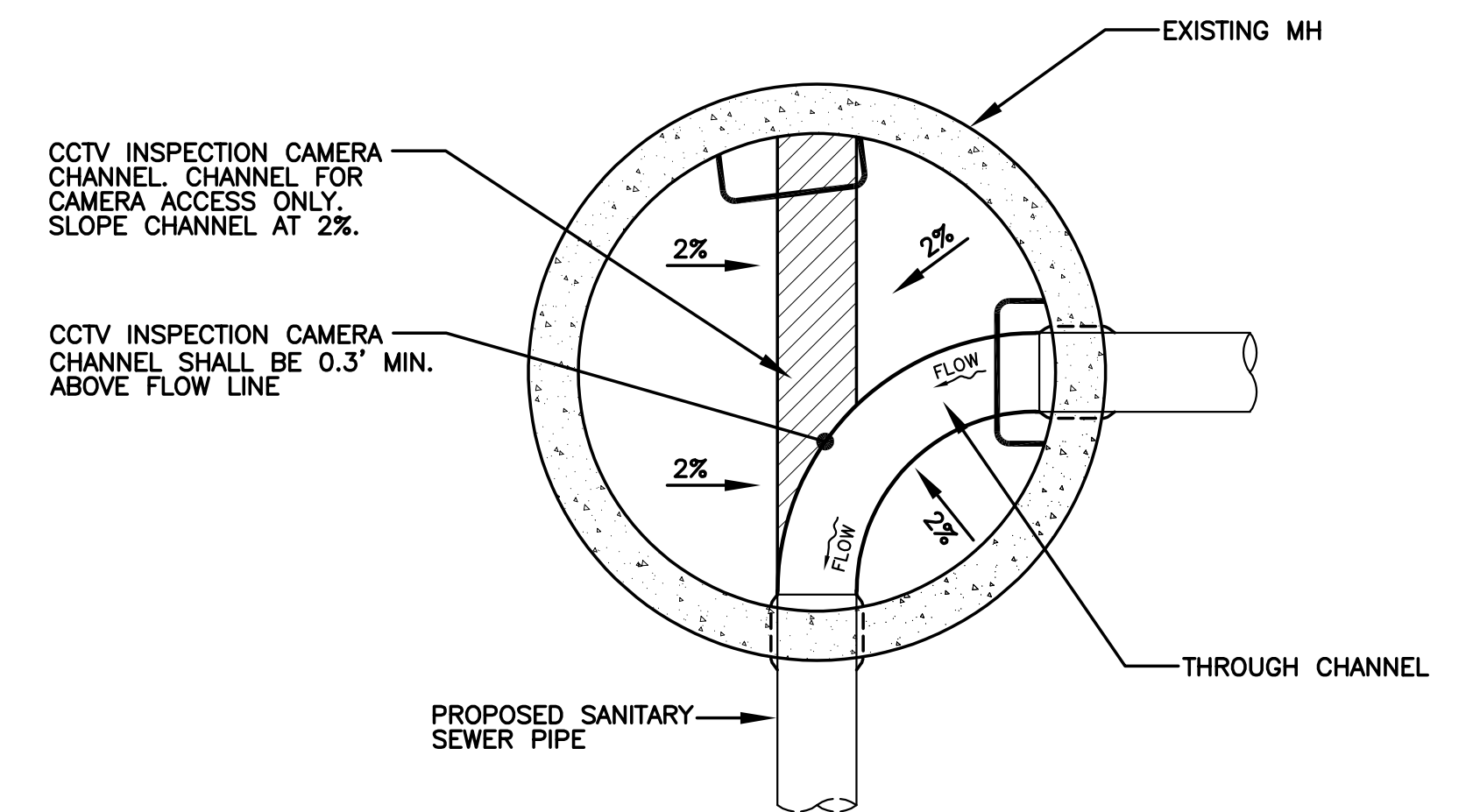


					13+00	14+00	15+00	16+00	17+00	18+00	19+00	20+00	21+00	22+00	23+00	24+00	25+00		
																		BARKER ROAD SEWER EXTENSION PHASE 2 #231C	
																		BARKER ROAD FORCE MAIN	
																		STA 13+00 TO STA 24+01	
																		SHEET	
																		8 of 9	

Drawn By: JJB	Date: 6/9/20	SCALE HORIZONTAL: 1"=50' VERTICAL: 1"=10' IF THIS BAR DOES NOT MEASURE 1" AT 24"x36", THEN DRAWING IS NOT TO SCALE - SCALE ACCORDINGLY
Designed By: PJS	Date: 6/9/20	
Checked By: MDM	Date: 6/9/20	

Spokane County Environmental Services Dept. 1026 W. Broadway Ave. SPOKANE, WA. 99260-0430 (509) 477-3604	APPROVED: _____ SPOKANE COUNTY Date: _____
--	--

1	3/12/2025	CLK		RECORD DRAWINGS	
No.	Date	By	Ckd.	Appr.	Revision



9

9 of 9

