

DEPARTMENT OF ECOLOGY

JUL 15 2019

<b>Application Id:</b> 24425		<b>Certification Received:</b> (Ecology use)	<b>WATER QUALITY PROGRAM</b>
<b>Facility Name:</b> UNION PACIFIC RAILROAD CO DAWSON ST ARGO		<b>Permit Number:</b> WAR001155 (Ecology use)	
<b>Facility Address:</b> 402 S DAWSON ST SEATTLE, WA 98108-2257		<b>Facility County:</b> King	
<b>Permittee Name:</b> Mark Lutz		<b>Permittee Title:</b> AVP Fuel & Enviro Mgmt	
<b>Permittee Email:</b> mdlutz@up.com		<b>Permittee Phone:</b> 4025443458	
<b>Permittee Address:</b> 1400 Douglas St Omaha, OR 98179-1001		<b>Organization Name:</b> Union Pacific Railroad	

**Certification of Permittee**

"I certify under penalty of law that this document and all attachments were prepared under my direction or supervision in accordance with a system designed to assure that qualified personnel properly gather and evaluate the information submitted. Based on my inquiry of the person or persons who manage the system or those directly responsible for gathering the information, the information submitted is, to the best of my knowledge and belief, true, accurate, and complete. I am aware that there are significant penalties for submitting false information, including the possibility of fine and imprisonment for knowing violations."

Mark Lutz , Union Pacific Railroad AVP Fuel & Environmental

Printed Name / Organization Title

ML 7/9/19

Signature of Permittee \* Date

\* Federal regulations require this application is signed by one of the following:  
A. For a corporation: By a responsible corporate officer.  
B. For a partnership or sole proprietorship: By a general partner or the proprietor, respectively.  
C. For a municipality, state, federal, or other public facility: By either a principal executive officer or ranking elected official.

Please print, sign and mail this form to the following address:

Washington Department of Ecology - Stormwater  
P.O. Box 47696  
Olympia, WA 98504-7696



DIV\GROUP\ENV\GIS\ DBLD: S.BELL Date Saved: 4/11/2019 2:44:01 PM Saved By: shell  
PROJECT: PATH: \corpstorage\data\gis\projects\SWPPP\Map2018\_2019\SWPPP\Washington\Seattle\WA\_Argo\_Yard\Map2018\_2019\SWPPP\_Fig2-1C.mxd



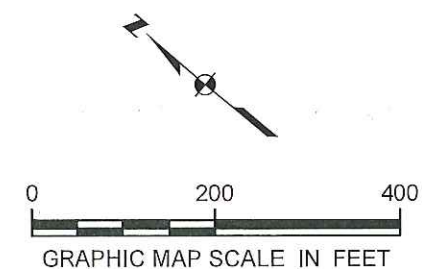
Figure Notes:  
1. AERIAL IMAGE ADOPTED FROM ESRI WORLD IMAGERY BASEMAP, ACCESSED 2019.



### Legend

- Catch Basin
- Lift Station
- Manhole
- Vault
- Sump
- Drainage System A
- Drainage System B
- Drainage System F
- Sanitary Sewer System Z
- Sanitary Sewer Lines
- Stormwater Pipe
- BMP Stormwater Treatment Area

Approximate Yard Boundary



UNION PACIFIC RAILROAD COMPANY

**SWPPP Site Map**  
Seattle, WA (Argo Yard)

Prepared by:

**ARCADIS**

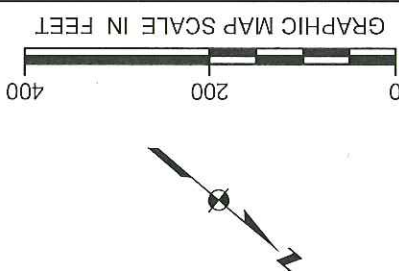
FIGURE  
**2-1G**





- Legend**
- Catch Basin
  - Manhole
  - Drainage System E
  - Drainage System F
  - Drainage System G
  - Drainage System H
  - Industrial Wastewater System L

- Sanitary Sewer Lines
- Stormwater Pipe
- BMP Stormwater Treatment Area
- Approximate Yard Boundary



Prepared by:

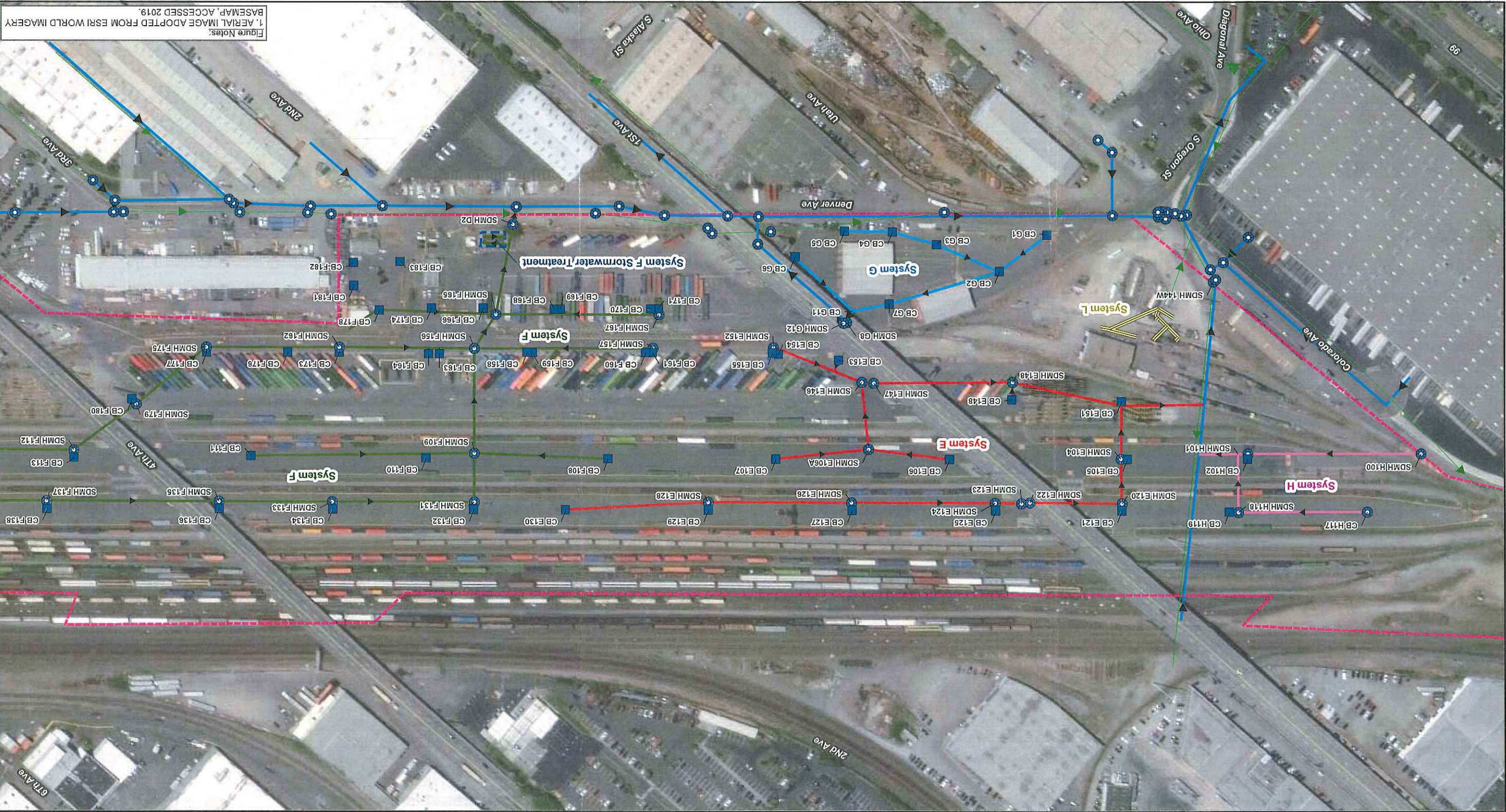


2-1F  
FIGURE

SWPPP Site Map  
Seattle, WA (Argo Yard)



Figure Notes:  
1. AERIAL IMAGE ADOPTED FROM ESRI WORLD IMAGERY  
BASEMAP, ACCESSED 2019.



47°33'30"N

47°33'40"N

47°33'50"N

122°20'0"W

47°34'0"N

47°34'0"N



DIV\GROUP\ENV\GIS\ DBLD: S.BELL Date Saved: 4/11/2019 2:57:16 PM Saved By: sbell  
PROJECT: PATH: \corpstorage\Data\GIS\Projects\ENVIUPRR\_CaliforniaMappingProgram\Map2018\_2019\SWPPP\Washington\Seattle\WA\_Argo\_Yard\MXDs\ArgoYard\_SWPPP\_Fig2-1E.mxd

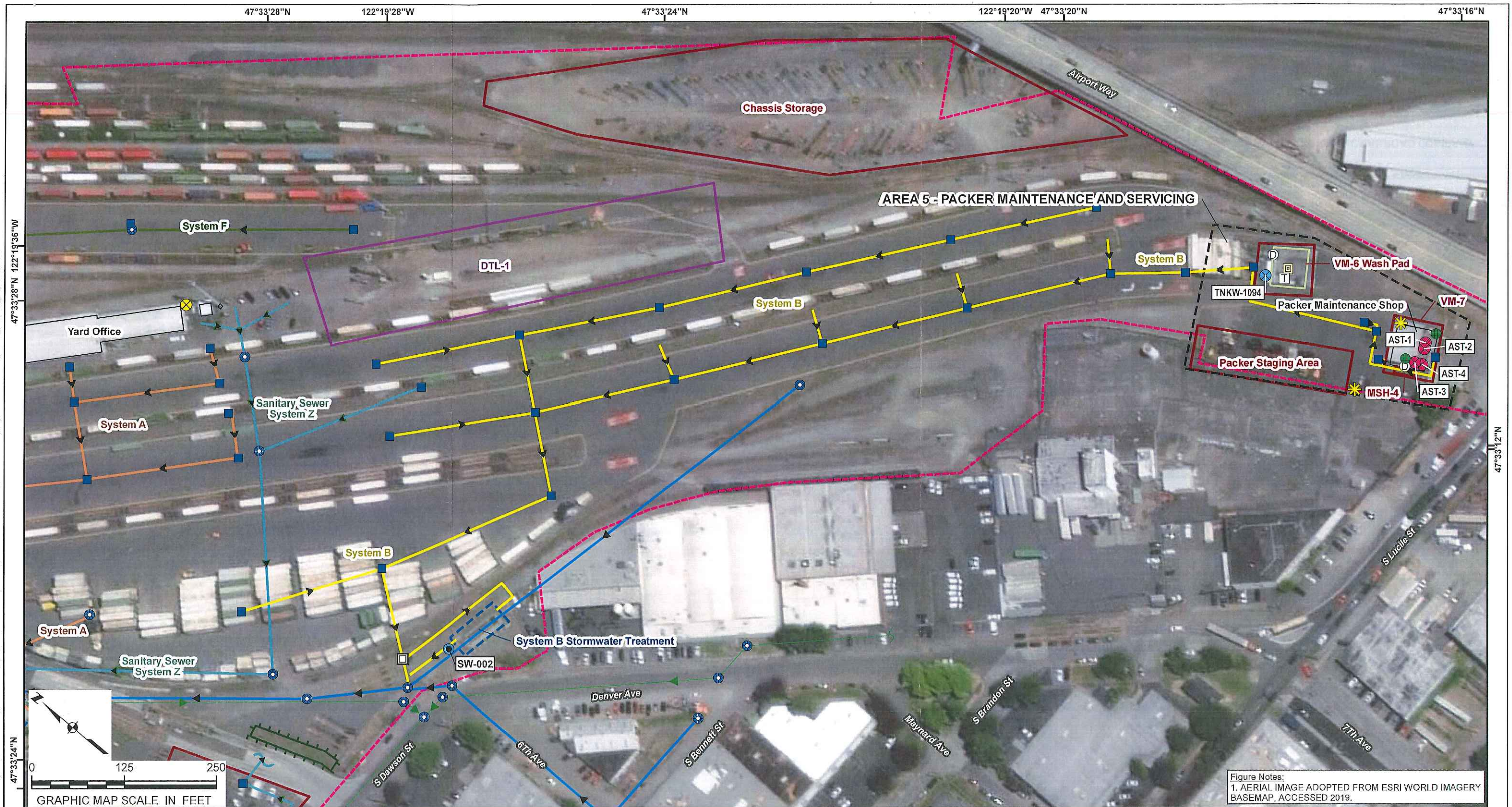
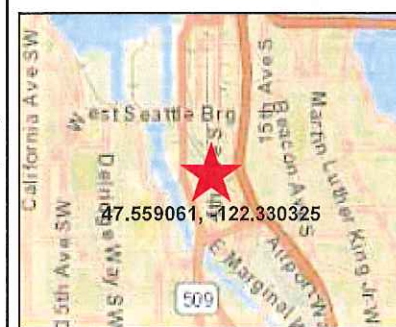


Figure Notes:  
1. AERIAL IMAGE ADOPTED FROM ESRI WORLD IMAGERY BASEMAP, ACCESSED 2019.



### Legend

- |   |                      |                          |                              |
|---|----------------------|--------------------------|------------------------------|
| Spill Prevention and Protection / Spill Kit | Stormwater Outfall   | Drainage System B        | Industrial Activity Location |
| Aboveground Storage Tank (AST)              | Catch Basin          | Drainage System F        | Regulated Area               |
| Drum Storage                                | Manhole              | Sanitary Sewer System Z  | Approximate Yard Boundary    |
| Tote Storage                                | Vault                | Swale                    |                              |
| Transfer                                    | Sump                 | BMP Stormwater Treatment |                              |
| Water Tank                                  | Sanitary Sewer Lines | Impermeable Area         |                              |
| Propane Tank                                | Stormwater Pipe      | Building                 |                              |
|   | Drainage System A    | Regulated DTL Area       |                              |



UNION PACIFIC RAILROAD COMPANY

### SWPPP Site Map Seattle, WA (Argo Yard)

Prepared by:

ARCADIS

FIGURE

2-1E





Legend

- Stormwater Sample Location
- Spill Prevention and Protection / Spill Kit
- Aboveground Storage Tank (AST)
- Generator
- Material Storage and Handling
- Transfer
- Propane Tank
- Stormwater Outfall
- Catch Basin
- Lift Station
- Manhole
- Vault
- Sump
- Berm
- Sanitary Sewer Lines
- Stormwater Pipe
- Drainage System A
- Drainage System B
- Drainage System E
- Drainage System F
- Sanitary Sewer System Z
- BMP Stormwater Treatment
- Swale
- Building
- Packer Parking and Fueling
- Regulated DTL Area
- Industrial Activity Location
- Regulated Area
- Approximate Yard Boundary

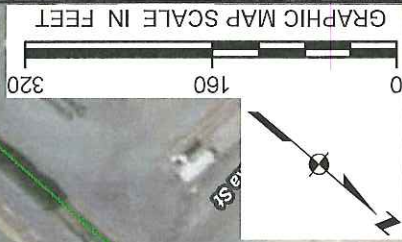
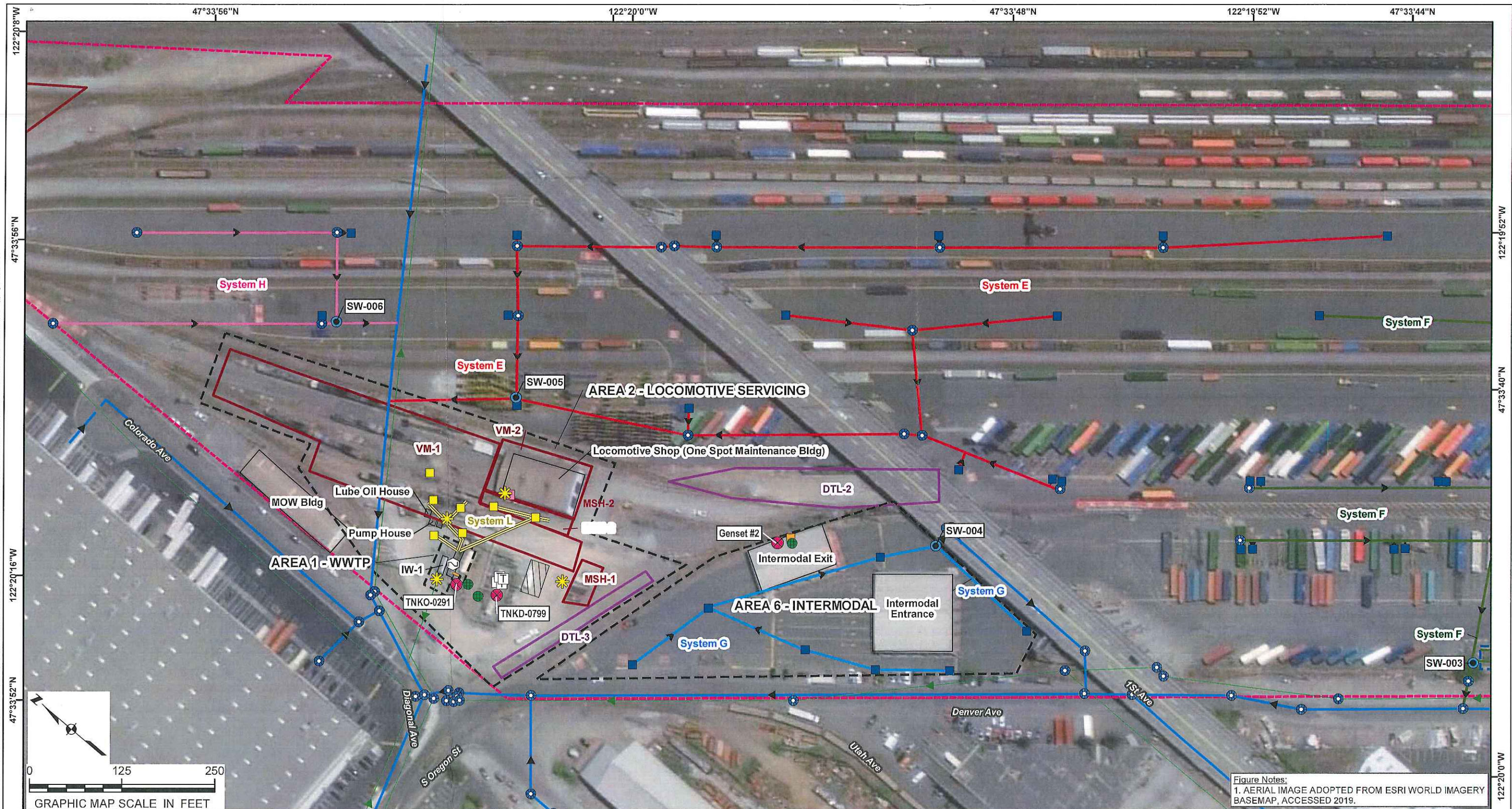


Figure Notes:  
1. AERIAL IMAGE ADOPTED FROM ESRI WORLD IMAGERY  
BASEMAP, ACCESSED 2019.



DIV\GROUP\ENR\GIS DBLD: S.BELL Date Saved: 4/11/2019 2:18:47 PM Saved By: sbell  
PROJECT: PATH: \\corporate\data\GIS\Projects\ENR\UPRR\_California\MapProgram\ArcMap\2018\_2019\SWPPP\Washington\Seattle\WA\_Argo\_Yard\MXDs\ArgoYard\_SWPPP\_Fig2-1C.mxd



### Legend

- |   |                              |                              |                           |
|---|------------------------------|------------------------------|---------------------------|
| Spill Prevention and Protection / Spill Kit | Catch Basin                  | Drainage System E            | Regulated DTL Area        |
| Aboveground Storage Tank (AST)              | Industrial Waste Water Drain | Drainage System F            | Regulated Area            |
| Generator                                   | Manhole                      | Drainage System G            | Approximate Yard Boundary |
| Tote Storage                                | Oil-Water Separator          | Drainage System H            |                           |
| Transfer                                    | Fuel Line - Above Ground     | BMP Stormwater Treatment     |                           |
| Filter Drain Bin                            | Industrial Wastewater Lines  | Building                     |                           |
| Stormwater Outfall                          | Sanitary Sewer Lines         | Diesel Truck Staging         |                           |
|   | Stormwater Pipe              | Industrial Activity Location |                           |



UNION PACIFIC RAILROAD COMPANY

### SWPPP Site Map Seattle, WA (Argo Yard)

Prepared by:

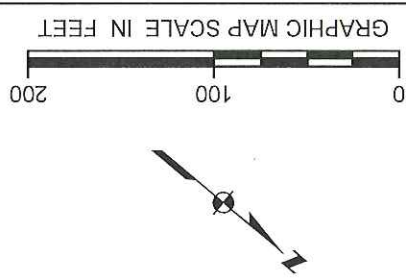


FIGURE  
2-1C





- Legend**
- Manhole
  - Sanitary Sewer Lines
  - Stormwater Pipe
  - Industrial Activity Location
  - Approximate Yard Boundary



Prepared by:

**ARCADIS**

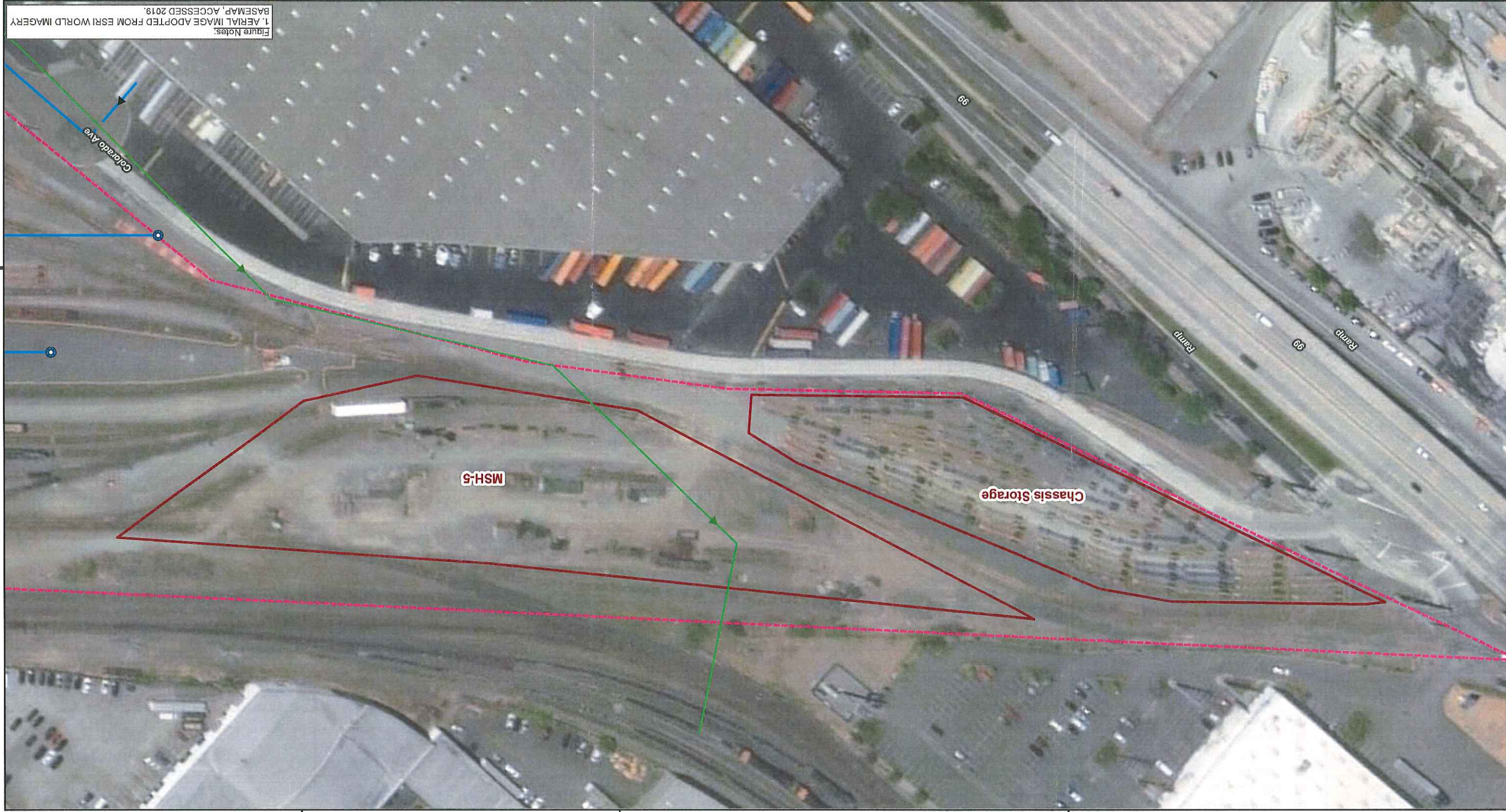
FIGURE  
**2-1B**

**SWPPP Site Map**  
Seattle, WA (Argo Yard)

UNION PACIFIC RAILROAD COMPANY



Figure Notes:  
1. AERIAL IMAGE ADOPTED FROM ESRI WORLD IMAGERY  
BASEMAP, ACCESSED 2019.



47°34'6\"/>

122°29'20\"/>

47°34'6\"/>

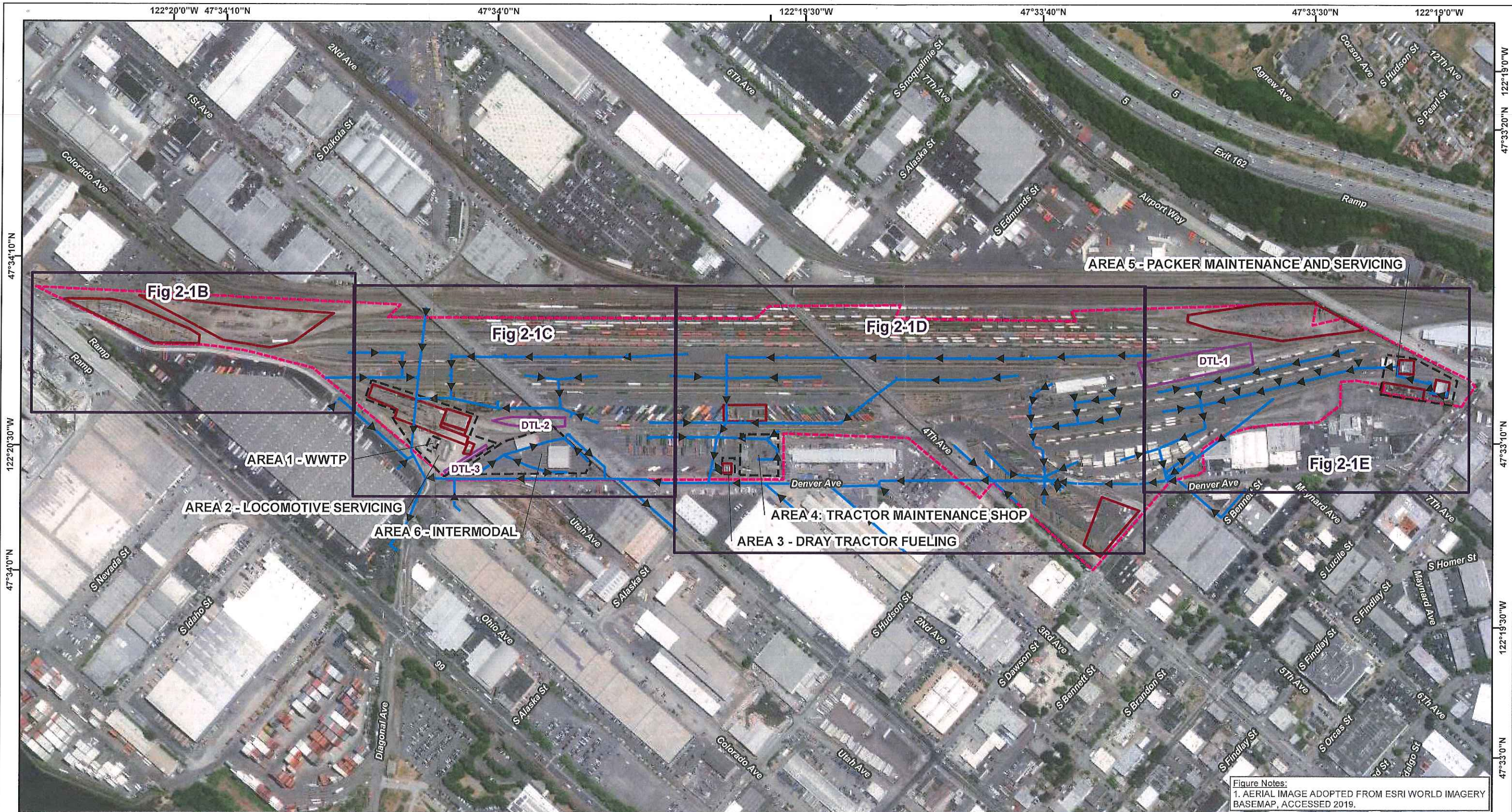
122°29'10\"/>

47°34'0\"/>

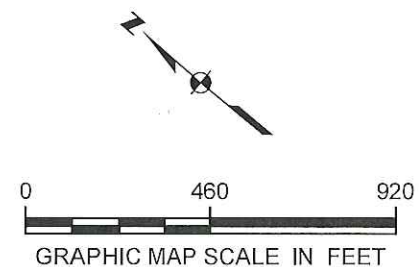
47°33'54\"/>



DIV\GROUP\ENV\GIS\ DBLD: S.BELL Date Saved: 4/5/2019 12:21:52 PM Saved By: sbell  
PROJECT: PATH: \\corporate\data\arcgis\project\ENVI\PRR\_California\mapping\Program\Map2018\_2019\SWPPP\Washington\Seattle\WA\_Argo\_Yard\MXDs\ArgoYard\_SWPPP\_Fig2-1A.mxd



- Legend**
- Stormwater Pipe
  - Industrial Activity Location
  - Regulated DTL Area
  - Regulated Area
  - Approximate Yard Boundary

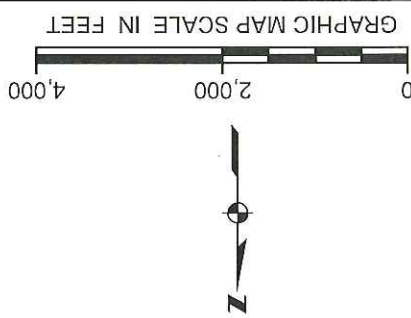


**SWPPP Site Map**  
Seattle, WA (Argo Yard)





Legend  
Approximate Yard Boundary



Prepared by: **ARCADIS**

SWPPP Site Map  
Seattle, WA (Argo Yard)

UNION PACIFIC RAILROAD COMPANY

1-1  
FIGURE

Figure Notes:  
1. AERIAL IMAGE ADOPTED FROM ESRI WORLD IMAGERY  
BASEMAP, ACCESSED 2019

