

CAUTION NOTICE TO CONTRACTOR
THE CONTRACTOR IS SPECIFICALLY CAUTIONED THAT THE LOCATION AND/OR ELEVATION OF EXISTING UTILITIES AS SHOWN ON THESE PLANS ARE BASED ON RECORDS OF THE VARIOUS UTILITY COMPANIES AND, WHERE POSSIBLE, MEASUREMENTS TAKEN IN THE FIELD. THE INFORMATION IS NOT TO BE RELIED ON AS BEING EXACT OR COMPLETE. THE CONTRACTOR MUST CALL THE APPROPRIATE UTILITY COMPANY AT LEAST 7 DAYS BEFORE ANY EXCAVATION TO REQUEST EXACT FIELD LOCATION OF UTILITIES. IT SHALL BE THE RESPONSIBILITY OF THE CONTRACTOR TO RELOCATE ALL EXISTING UTILITIES HORIZONTALLY AND VERTICALLY WHICH CONFLICT WITH THE PROPOSED IMPROVEMENTS SHOWN ON THE PLANS.

BENCHMARKS
AS SHOWN ON SURVEY DATED 5.8.2020. BENCHMARKS ARE LOCATED AT THE SOUTH CORNER ON WEST ALDER STREET, ELEVATION BENCHMARK MAG NAIL IN ASPHALT, ELEVATION 923.88 AND LOCATED AT THE EAST CORNER ON WEST ALDER STREET, ELEVATION BENCHMARK MAG NAIL IN ASPHALT, ELEVATION 927.67

FLOODNOTE
ACCORDING TO THE ALTA SURVEY, THE SUBJECT PROPERTY LIES IN FLOOD ZONE C, NO SPECIAL FLOOD HAZARD AREA, MAP 530194 0435 B, 7/18/1975 NSFHA. THIS PROPERTY IS LOCATED WITHIN THE MILL CREEK FLOOD CONTROL DISTRICT.

LEGEND:

- PROPERTY LINE
- PROPOSED CURB & GUTTER
- LIMITS OF FULL DEPTH SAWCUT
- APPROXIMATE LIMIT OF WORK

● BOLLARD

TRAFFIC/HANDICAP SIGN

DIRECTIONAL SIGN

SPEAKER BOX

MENU BOARD

LIGHT POLE

AREA DRAIN(SEWER)

○ GREASE INTERCEPTOR OR TRAP

● CLEAN-OUT

● DOUBLE CLEAN-OUT

GM GAS METER

WM WATER METER

IM IRRIGATION METER

SS MANHOLE

CURB CUT

DRAINAGE SLOPE AND DIRECTION

- XXXX EX EXISTING SPOT ELEVATION
- XXXX TP TOP OF PAVEMENT ELEVATION
- XXXX TC TOP OF CURB
- XXXX GT GUTTER
- XXXX VG VALLEY GUTTER
- XXXX FL ELEVATION OF GUTTER
- XXXX RIM TOP OF BMP ELEVATION, STORM OR SEWER STRUCTURE
- XXXX TW TOP OF WALL
- XXXX GR GROUND
- XXXX FF FINISH FLOOR
- XXXX SW SIDEWALK
- XXXX TG TOP OF GRATE
- XXXX (E) EXISTING
- XXXX (P) PROPOSED
- XXXX FG FINISH GRADE
- XXXX GB GRADE BREAK

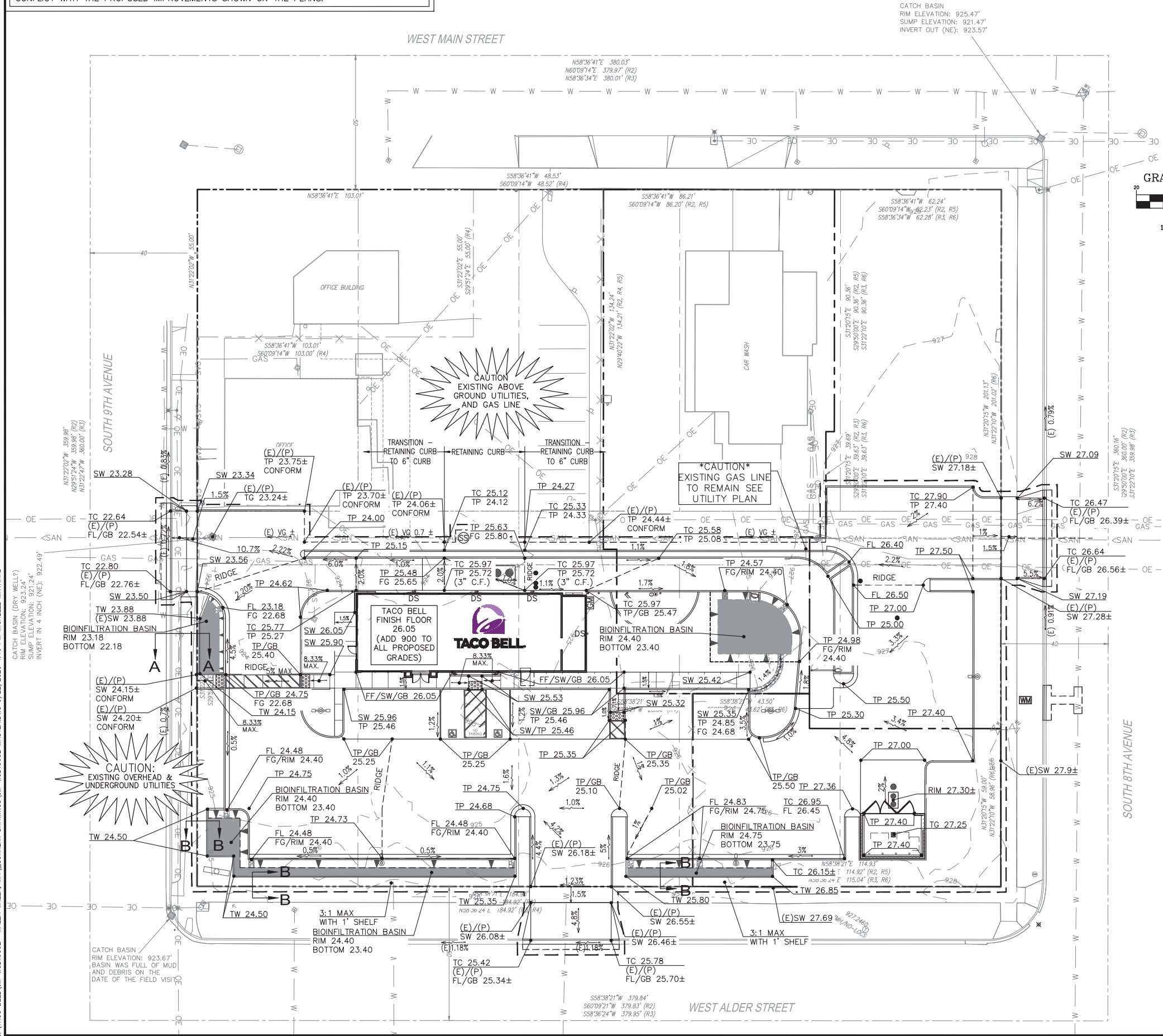
LANDSCAPED AREA/SELF-TREATING

BIOINFILTRATION BASIN WITH WALLS

BIOINFILTRATION BASIN WITH SIDE SLOPES

- NOTES:
- BRING ALL EXISTING AND PROPOSED MANHOLES, CLEANOUTS AND UTILITY BOXES WITHIN THE LIMITS OF CONSTRUCTION TO MATCH FINISH GRADE.
 - TC (TOP OF CURBS) ARE 6" ABOVE ADJACENT TP (TOP OF PAVEMENT) ELEVATION UNLESS NOTED OTHERWISE (I.E. AT RETAINING CURBS, OR CURB HEIGHTS OTHER THAN 6").
 - PORTION OF EXISTING GAS LINE TO REMAIN, SEE UTILITY PLAN.

\\TACO BELL\JM-WCB19002 -WALLA WALLA, WA\CURRENT DRAWINGS\JM-WCB19002 MASTER.DWG 9/22/2020 4:15 PM MICHELLE MAYNARD



Know what's below.
Call before you dig.



19120 SE 34th St., Suite 115
Vancouver, WA 98683
Ph. 214-491-1830
John Measels, PE
CIVIL ENGINEER



9/22/2020



TACO BELL
622 W. ALDER STREET
WALLA WALLA, WA 99362
EXPLORER LITE
LARGE50

REV	DATE	DESCRIPTION	INITIAL	SUBMITAL	SEPA COMMENT	ADDRESSED
1	05/12/2020	INITIAL SUBMITAL				
2	09/22/2020	SEPA COMMENT ADDRESSED				
3						
4						
5						
6						
7						
8						
9						
10						
11						
12						
13						
14						
15						
16						
17						
18						
19						
20						
21						
22						
23						
24						
25						
26						
27						
28						
29						
30						
31						
32						
33						
34						
35						
36						
37						
38						
39						
40						
41						
42						
43						
44						
45						
46						
47						
48						
49						
50						
51						
52						
53						
54						
55						
56						
57						
58						
59						
60						
61						
62						
63						
64						
65						
66						
67						
68						
69						
70						
71						
72						
73						
74						
75						
76						
77						
78						
79						
80						
81						
82						
83						
84						
85						
86						
87						
88						
89						
90						
91						
92						
93						
94						
95						
96						
97						
98						
99						
100						

PROJECT NO: JM-WCB19002.0
DRAWN BY: GAB 3
CHECKED BY: JACE
ISSUE DATE: 09/22/2020
GRADING PLAN

C 300

CAUTION NOTICE TO CONTRACTOR
THE CONTRACTOR IS SPECIFICALLY CAUTIONED THAT THE LOCATION AND/OR ELEVATION OF EXISTING UTILITIES AS SHOWN ON THESE PLANS ARE BASED ON RECORDS OF THE VARIOUS UTILITY COMPANIES AND, WHERE POSSIBLE, MEASUREMENTS TAKEN IN THE FIELD. THE INFORMATION IS NOT TO BE RELIED ON AS BEING EXACT OR COMPLETE. THE CONTRACTOR MUST CALL THE APPROPRIATE UTILITY COMPANY AT LEAST 7 DAYS BEFORE ANY EXCAVATION TO REQUEST EXACT FIELD LOCATION OF UTILITIES. IT SHALL BE THE RESPONSIBILITY OF THE CONTRACTOR TO RELOCATE ALL EXISTING UTILITIES HORIZONTALLY AND VERTICALLY WHICH CONFLICT WITH THE PROPOSED IMPROVEMENTS SHOWN ON THE PLANS.

BENCHMARKS
AS SHOWN ON SURVEY DATED 5.8.2020. BENCHMARKS ARE LOCATED AT THE SOUTH CORNER ON WEST ALDER STREET, ELEVATION BENCHMARK MAG NAIL IN ASPHALT, ELEVATION 923.88 AND LOCATED AT THE EAST CORNER ON WEST ALDER STREET, ELEVATION BENCHMARK MAG NAIL IN ASPHALT, ELEVATION 927.67

GENERAL LEGEND:

- PROPERTY LINE
- LIMITS OF FULL DEPTH SAWCUT
- EROSION LIMIT OF DISTURBANCE
- DRAINAGE SLOPE AND DIRECTION
- CHECK DAMS
- FENCING/ SILT FENCE
- S. DRAIN INLET PROTECTION
- CONCRETE WASHOUT
- MATERIAL STORAGE

EROSION AND SEDIMENT CONTROL MEASURES:

KEYNOTE	MEASURE	2020 STATE STANDARD SPECIFICATION	MAY 2019 TEMPORARY EROSION AND SEDIMENT CONTROL MANUAL REFERENCE
①	CHECK DAMS (SAND BAG OR COMPOST SOCK AS NOTED)	8-01.3(6)	5-1.1.4
②	CONSTRUCTION ENTRANCE	8-01.3(7)	5-1.1.34
③	10'X10' CONCRETE WASHOUT	8-01.3(5)	5-1.1.7
④	FENCING/ SILT FENCE	8-01.3(9)A & A2	5-1.1.32
⑤	S. DRAIN INLET PROTECTION	8-01.3(9)D	5-1.1.35
⑥	MATERIAL STORAGE	1-06.4	5-1.1.21
⑦	TEMPORARY SEDIMENT TRAP		5-1.1.30

SEQUENCE OF CONSTRUCTION ACTIVITIES:

- CONSTRUCT TEMPORARY CONSTRUCTION ENTRANCE AND SILT FENCE ACCORDING TO THE APPROXIMATE LOCATION SHOWN ON THE EROSION CONTROL PLAN.
- CONSTRUCT TEMPORARY INLET TREATMENT AROUND OPEN STORM DRAIN INLETS ACCORDING TO THE EROSION CONTROL PLAN.
- KEEP ALL STORM WATER POLLUTION PREVENTION MEASURES IN PLACE.
- BEGIN CLEARING AND GRADING OF SITE.
- INSTALL WATER, SANITARY SEWER AND STORM DRAIN AS SPECIFIED ON PLAN SHEETS.
- PAVE STREETS AND SIDEWALKS AS SPECIFIED ON PLAN SHEETS.
- RE-VEGETATE LOTS, PARKWAYS AND ALL DISTURBED AREAS.
- REMOVE ALL TEMPORARY EROSION CONTROL DEVICES.

MAINTENANCE:

- CONTRACTOR TO KEEP ALL STORM WATER POLLUTION PREVENTION MEASURES IN PLACE DURING CONSTRUCTION.
- CONTRACTOR SHALL MAINTAIN ALONG WITH THE SIGNED EFFECTIVE COPY OF SWP3 DRAWINGS AN UPDATED LIST IDENTIFYING ALL POTENTIAL SOURCES OF POLLUTION INCLUDING PORTA-POTTYS, FUEL TANKS, STAGING AREAS, WASTE CONTAINERS, CHEMICAL STORAGE AREAS, CONCRETE CURE, PAINTS SOLVENTS, ETC., AND A DESCRIPTION OF THE LOCATION.
- CONTRACTOR TO REMOVE ALL STORM WATER POLLUTION PREVENTION MEASURES AFTER CONSTRUCTION IS COMPLETE AND INSPECTED FOR APPROVAL. LONG TERM MAINTENANCE TO BE PROVIDED BY OWNER.

NOTES:

- CONTRACTOR SHALL POLICE SITE REGULARLY AND AND KEEP SITE FREE OF TRASH AND CONSTRUCTION DEBRIS.
- ALL EROSION CONTROL DEVICES SHALL BE CONSTRUCTED AND MAINTAINED IN COMPLIANCE WITH CITY STANDARD EROSION CONTROL DETAILS
- TOTAL DISTURBED AREA=0.976 ACRES.
- REFER TO LANDSCAPE PLAN FOR FINAL GROUND STABILIZATION
- REFER TO SHEET C410 FOR DETAILS.
- INLETS IN PUBLIC RIGHT OF WAY CAN USE EITHER MEASURE SHOWN ON DETAIL SHEET AS APPROVED BY INSPECTOR.

2019 SWMMW STANDARD SWPPP NOTES:

- APPROVAL OF THIS ESC PLAN DOES NOT CONSTITUTE AN APPROVAL OF PERMANENT ROAD OR DRAINAGE DESIGN (E.G., SIZE AND LOCATION OF ROADS, PIPES, RESTRICTORS, CHANNELS, RETENTION FACILITIES, UTILITIES, ETC.).
- THE IMPLEMENTATION OF THIS ESC PLAN AND THE CONSTRUCTION, MAINTENANCE, REPLACEMENT, AND UPGRADING OF THESE ESC BMPs IS THE RESPONSIBILITY OF THE APPLICANT UNTIL ALL CONSTRUCTION IS COMPLETED AND APPROVED AND VEGETATION/LANDSCAPING IS ESTABLISHED.
- CLEARLY FLAG THE BOUNDARIES OF THE CLEARING LIMITS SHOWN ON THIS PLAN IN THE FIELD PRIOR TO CONSTRUCTION. DURING THE CONSTRUCTION PERIOD, NO DISTURBANCE BEYOND THE FLAGGED CLEARING LIMITS SHALL BE PERMITTED. THE FLAGGING SHALL BE MAINTAINED BY THE APPLICANT FOR THE DURATION OF CONSTRUCTION.
- THE ESC BMPs SHOWN ON THIS PLAN IN CONJUNCTION WITH ALL CLEARING AND GRADING ACTIVITIES, AND IN SUCH A MANNER AS TO ENSURE THAT SEDIMENT AND SEDIMENT LADEN WATER DO NOT ENTER THE DRAINAGE SYSTEM, ROADWAYS, OR VIOLATE APPLICABLE WATER STANDARDS.
- THE ESC BMPs SHOWN ON THIS PLAN ARE THE MINIMUM REQUIREMENTS FOR ANTICIPATED SITE CONDITIONS. DURING THE CONSTRUCTION PERIOD, UPGRADE THESE ESC BMPs AS NEEDED FOR UNEXPECTED STORM EVENTS AND TO ENSURE THAT SEDIMENT AND SEDIMENT-LADEN WATER DO NOT LEAVE THE SITE.
- THE APPLICANT SHALL INSPECT THE ESC BMPs DAILY AND MAINTAIN THEM AS NECESSARY TO ENSURE THEIR CONTINUED FUNCTIONALITY.
- INSPECT AND MAINTAIN THE ESC BMPs ON INACTIVE SITES A MINIMUM OF ONCE A MONTH OR WITHIN THE 48 HOURS FOLLOWING A MAJOR STORM EVENT (24-HOUR STORM EVENT WITH A 10-YEAR OR GREATER RECURRENCE INTERVAL).
- AT NO TIME SHALL THE SEDIMENT EXCEED 60 PERCENT OF THE SUMP DEPTH OR HAVE LESS THAN 6 INCHES OF CLEARANCE FROM THE SEDIMENT SURFACE TO THE INVERT OF THE LOWEST PIPE. ALL CATCH BASINS AND CONVEYANCE LINES SHALL BE CLEANED PRIOR TO PAVING. THE CLEANING OPERATION SHALL NOT FLUSH SEDIMENT LADEN WATER INTO THE DOWNSTREAM SYSTEM.
- INSTALL STABILIZED CONSTRUCTION ENTRANCES AT THE BEGINNING OF CONSTRUCTION AND MAINTAIN FOR THE DURATION OF THE PROJECT. ADDITIONAL MEASURES MAY BE REQUIRED TO ENSURE THAT ALL PAVED AREAS ARE KEPT CLEAN FOR THE DURATION OF THE PROJECT.



Know what's below.
Call before you dig.



19120 SE 34th St., Suite 115
Vancouver, WA 98683

Ph. 214-491-1830

John Measels, PE
CIVIL ENGINEER



9/22/2020



TACO BELL

622 W. ALDER STREET
WALLA WALLA, WA 99362

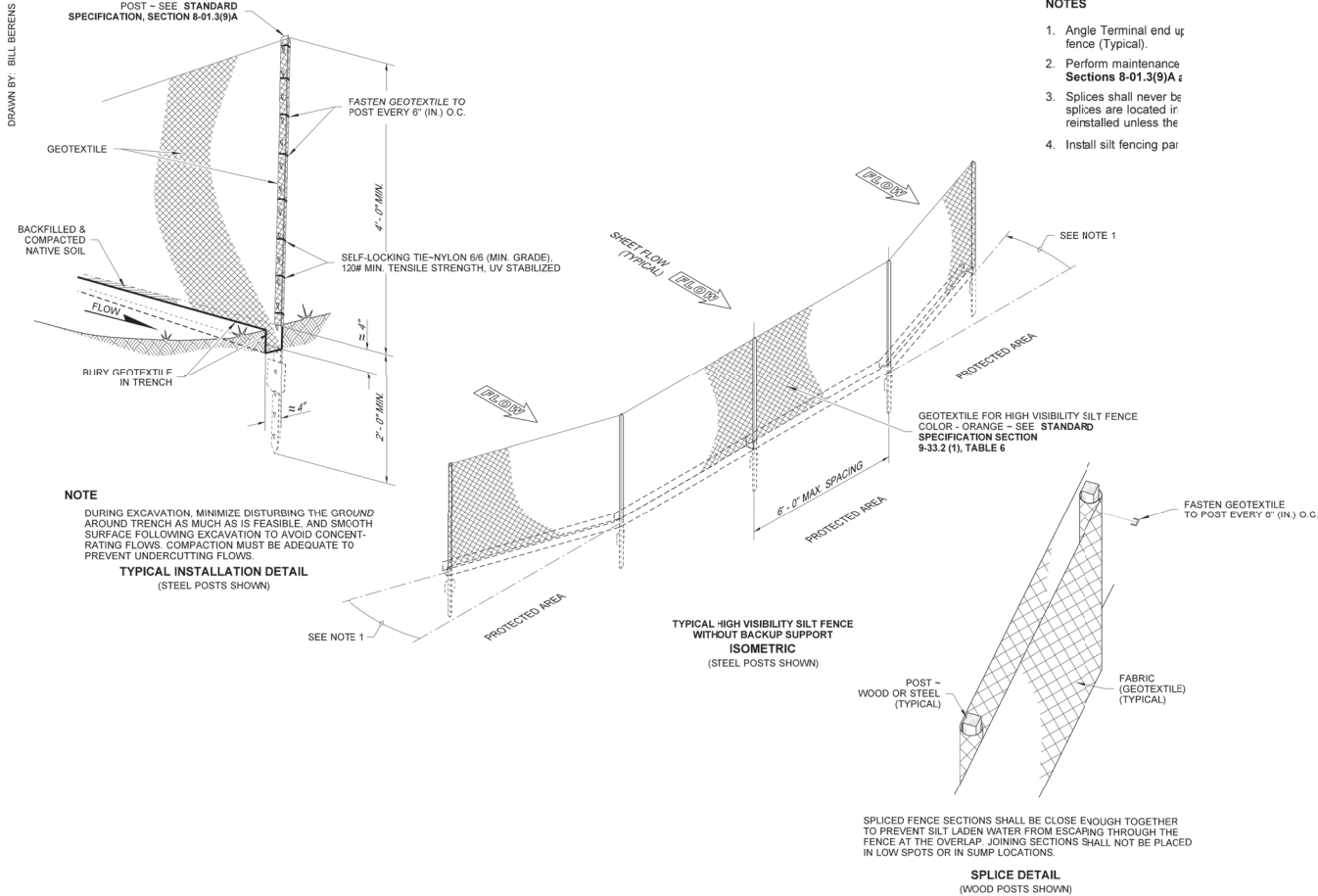
EXPLORER LITE

LARGE50

REV	DATE	DESCRIPTION	NAME
01	05/12/2020	INITIAL SUBMITTAL	YOU2
02	09/22/2020	SEPA COMMENT ADDRESSED	
03			
04			
05			
06			
07			
08			
09			
10			
11			
12			
13			
14			
15			
16			
17			
18			
19			
20			
21			
22			
23			
24			
25			
26			
27			
28			
29			
30			
31			
32			
33			
34			
35			
36			
37			
38			
39			
40			
41			
42			
43			
44			
45			
46			
47			
48			
49			
50			
51			
52			
53			
54			
55			
56			
57			
58			
59			
60			
61			
62			
63			
64			
65			
66			
67			
68			
69			
70			
71			
72			
73			
74			
75			
76			
77			
78			
79			
80			
81			
82			
83			
84			
85			
86			
87			
88			
89			
90			
91			
92			
93			
94			
95			
96			
97			
98			
99			
100			

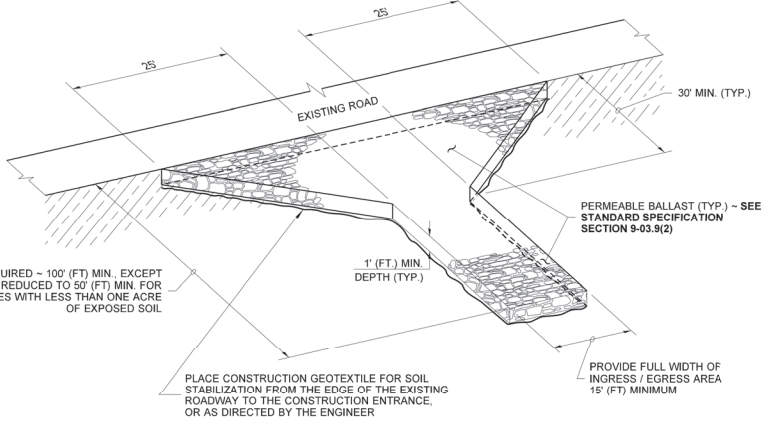
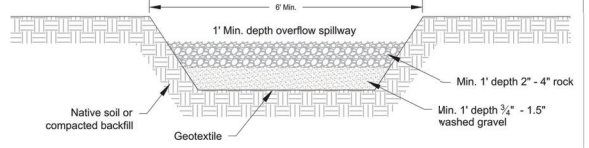
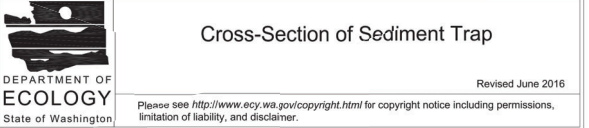
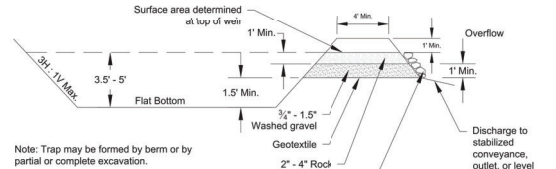
PROJECT NO: JM-WCB9002.0
DRAWN BY: GAB 3
CHECKED BY: JACE
ISSUE DATE: 09/22/2020
SOIL EROSION AND SEDIMENT CONTROL PLAN
C 400

DRAWN BY: BILL BEREHS

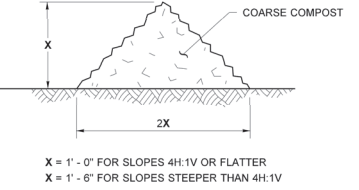


NOTE
DURING EXCAVATION, MINIMIZE DISTURBING THE GROUND AROUND TRENCH AS MUCH AS IS FEASIBLE, AND SMOOTH SURFACE FOLLOWING EXCAVATION TO AVOID CONCENTRATING FLOWS. COMPACTION MUST BE ADEQUATE TO PREVENT UNDERCUTTING FLOWS.
TYPICAL INSTALLATION DETAIL
(STEEL POSTS SHOWN)

- NOTES**
1. Angle Terminal end up fence (Typical).
 2. Perform maintenance Sections 8-01.3(9)A & B.
 3. Splices shall never be located in reinstalled unless the
 4. Install silt fencing per



**ISOMETRIC VIEW
STABILIZED CONSTRUCTION ENTRANCE**
STABILIZED CONSTRUCTION ENTRANCE SHALL MEET THE REQUIREMENTS OF STANDARD SPECIFICATION SECTION 8-01.3(7).



**TYPICAL SECTION
COMPOST BERM DETAIL**

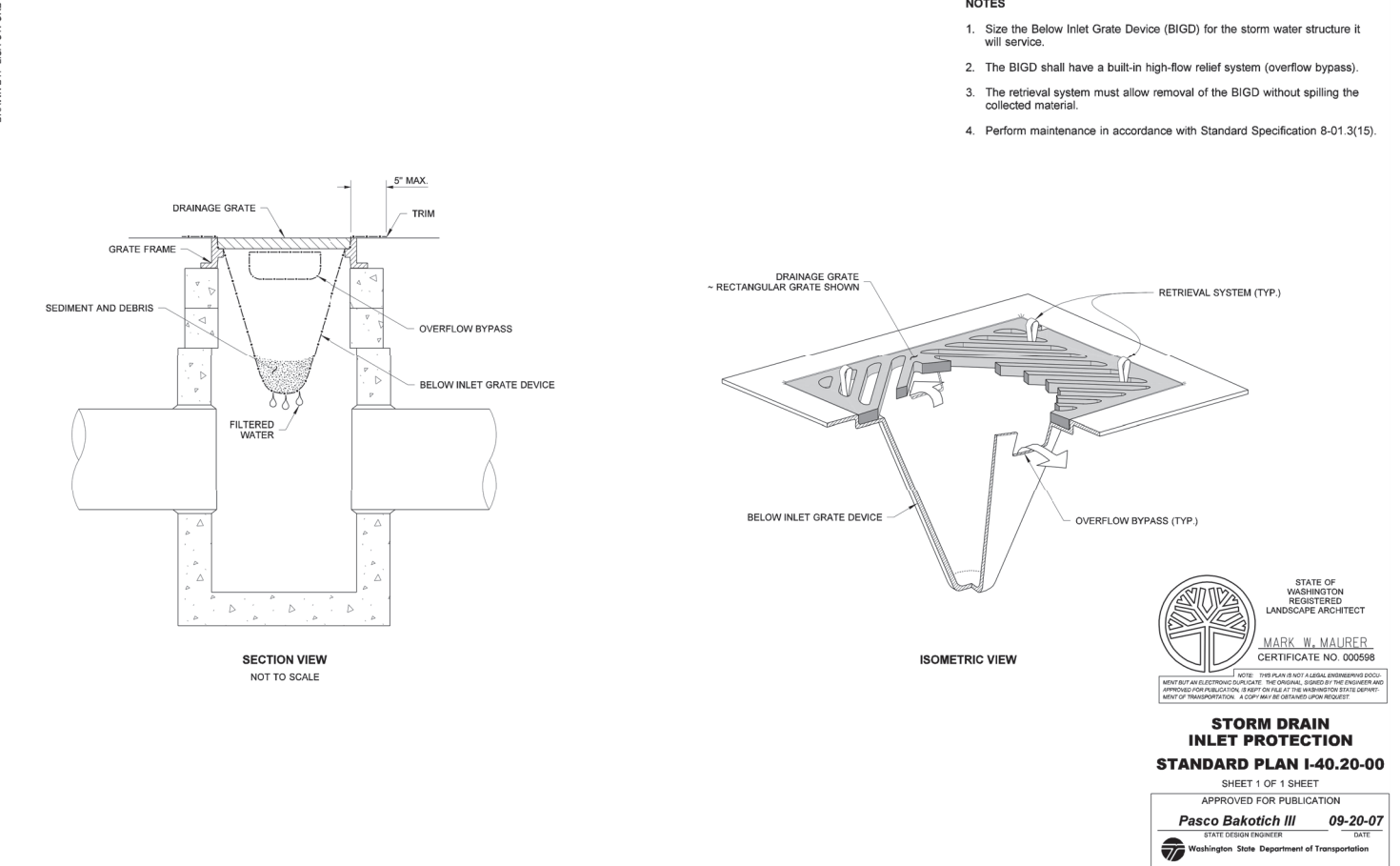
**MISCELLANEOUS
EROSION CONTROL DETAILS
STANDARD PLAN I-80.10-02**

SHEET 1 OF 1 SHEET

APPROVED FOR PUBLICATION
Carpenter, Jeff
Jul 15 2016 2:28 PM

STATE DESIGN ENGINEER
Washington State Department of Transportation

DRAWN BY: LISA CYFORD



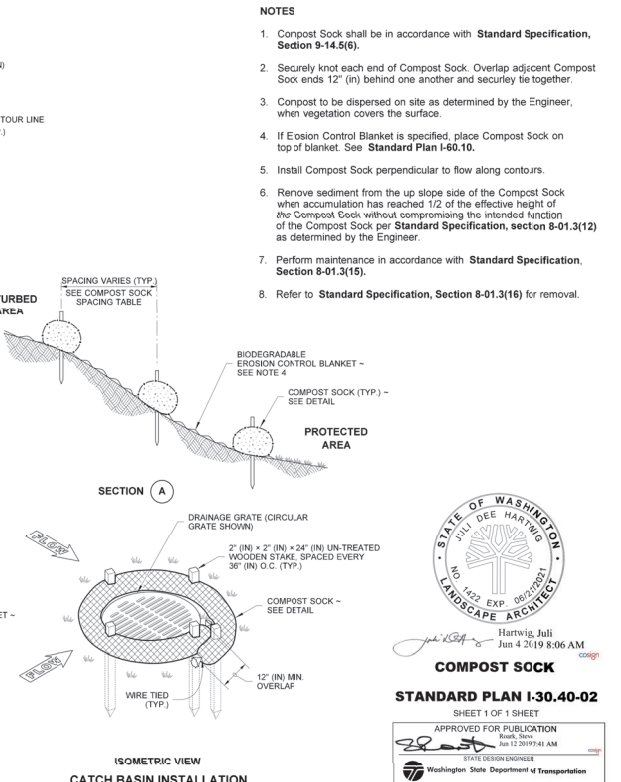
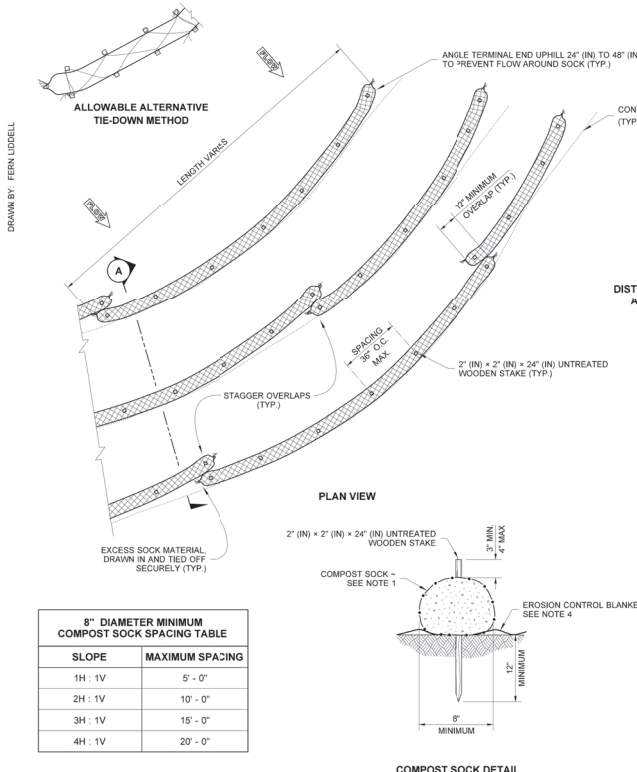
- NOTES**
1. Size the Below Inlet Grate Device (BIGD) for the storm water structure it will service.
 2. The BIGD shall have a built-in high-flow relief system (overflow bypass).
 3. The retrieval system must allow removal of the BIGD without spilling the collected material.
 4. Perform maintenance in accordance with Standard Specification 8-01.3(15).

STATE OF WASHINGTON
REGISTERED
LANDSCAPE ARCHITECT
MARK W. MAURER
CERTIFICATE NO. 000598

**STORM DRAIN
INLET PROTECTION
STANDARD PLAN I-40.20-00**

SHEET 1 OF 1 SHEET

APPROVED FOR PUBLICATION
Pasco Bakotich III
09-20-07
STATE DESIGN ENGINEER
Washington State Department of Transportation



- NOTES**
1. Compost Sock shall be in accordance with Standard Specification, Section 9-14.5(6).
 2. Securely knot each end of Compost Sock. Overlap adjacent Compost Sock ends 12\"/>
 3. Compost to be dispersed on site as determined by the Engineer, when vegetation covers the surface.
 4. If Erosion Control Blanket is specified, place Compost Sock on top of blanket. See Standard Plan I-60.10.
 5. Install Compost Sock perpendicular to flow along contours.
 6. Remove sediment from the up slope side of the Compost Sock when accumulation has reached 1/2 of the effective height of the Compost Sock without compromising the intended function of the Compost Sock per Standard Specification, section 8-01.3(12) as determined by the Engineer.
 7. Perform maintenance in accordance with Standard Specification, Section 8-01.3(15).
 8. Refer to Standard Specification, Section 8-01.3(16) for removal.

STATE OF WASHINGTON
REGISTERED
LANDSCAPE ARCHITECT
JULIE DEE HARTWIG
CERTIFICATE NO. 1422

**COMPOST SOCK
STANDARD PLAN I-30.40-02**

SHEET 1 OF 1 SHEET

APPROVED FOR PUBLICATION
Hartwig, Julie
Jun 4 2019 8:06 AM

STATE DESIGN ENGINEER
Washington State Department of Transportation

JM CIVIL Engineering

19120 SE 34th St., Suite 115
Vancouver, WA 98683

Ph. 214-491-1830

John Measels, PE
CIVIL ENGINEER

TACO BELL

9/22/2020

TACO BELL

TACO BELL

622 W. ALDER STREET
WALLA WALLA, WA 99362

EXPLORER LITE
LARGE50

**SOIL EROSION AND
SEDIMENT CONTROL CITY DETAILS**

REV	DATE	DESCRIPTION	INITIAL	DATE	DESCRIPTION
1	05/12/2020	INITIAL SUBMITTAL			
2	09/22/2020	SEPA COMMENT ADDRESSED			
3					
4					
5					
6					
7					
8					
9					
10					

PROJECT NO: JM-WCB9002.0
DRAWN BY: GAB 3
CHECKED BY: JACE
ISSUE DATE: 09/22/2020

C 410

BENCHMARKS

AS SHOWN ON SURVEY DATED 5.8.2020. BENCHMARKS ARE LOCATED AT THE SOUTH CORNER ON WEST ALDER STREET, ELEVATION BENCHMARK MAG NAIL IN ASPHALT, ELEVATION 923.88 AND LOCATED AT THE EAST CORNER ON WEST ALDER STREET, ELEVATION BENCHMARK MAG NAIL IN ASPHALT, ELEVATION 927.67

LEGEND:

	PROPERTY LINE
	PROPOSED CURB & GUTTER
	LIMITS OF FULL DEPTH SAWCUT
	EXISTING CONTOUR
	PROPOSED CONTOUR

	BOLLARD		GREASE TRAP
	TRAFFIC/HANDICAP SIGN		CLEAN-OUT
	DIRECTIONAL SIGN		DOUBLE CLEAN-OUT
	MENU BOARD		GAS METER
	LIGHT POLE		WATER METER
	BUILDING UP LIGHTS		IRRIGATION METER
	AREA DRAIN		MANHOLE
	BUILDING DOWNSPOUT		CURB INLET
			DRAINAGE SLOPE AND DIRECTION

■ ■ ■ ■ ■ DRAINAGE DIVIDE

X
X.XX sf

Area
Square Feet

The diagram illustrates four types of bioinfiltration basins, each with a corresponding cross-section and plan view.

- WATERSHED BOUNDARY:** The cross-section shows a series of black rectangles representing the boundary. The plan view shows a rectangular area with a black border.
- IMPERVIOUS AREA (COLOR PER WATERSHED):** The cross-section shows a series of colored rectangles (green, pink, yellow, blue) representing the impervious area. The plan view shows a rectangular area with a black border.
- LANDSCAPED AREA:** The cross-section shows a series of small, irregular shapes representing the landscaped area. The plan view shows a rectangular area with a black border.
- BIOINFILTRATION BASIN WITH WALLS:** The cross-section shows a rectangular basin with vertical walls. The plan view shows a rectangular basin with a black border.
- BIOINFILTRATION BASIN WITH SIDE SLOPES:** The cross-section shows a basin with sloped sides. The plan view shows an oval-shaped basin with a black border.

9/22/2020

STORMWATER SITE PLAN

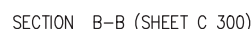
C 500





NOTE: PREPARE & PAINT METAL RAIL
PER SPECIFICATIONS- COLOR:
BENJAMIN MOORE "SHADOW GRAY
2125-40" OR EQUAL

N.T.S.



N.T.S.



N.T.S.



EXPLORER LITE
ARGE50

PROJECT NO:	REV	DATE	DESCRIPTION	NAME
WM-1001900.0		05/12/2020	INITIAL SUBMITAL	YOU?
DRAWN BY:		09/22/2020	SEPA COMMENT ADDRESSED	
SAB 3				
CHECKED BY:				
INCE				
ISSUE DATE:				
09/22/2020				

C 710