

CAUTION NOTICE TO CONTRACTOR  
THE CONTRACTOR IS SPECIFICALLY CAUTIONED THAT THE LOCATION AND/OR ELEVATION OF EXISTING UTILITIES AS SHOWN ON THESE PLANS ARE BASED ON RECORDS OF THE VARIOUS UTILITY COMPANIES AND, WHERE POSSIBLE, MEASUREMENTS TAKEN IN THE FIELD. THE INFORMATION IS NOT TO BE RELIED ON AS BEING EXACT OR COMPLETE. THE CONTRACTOR MUST CALL THE APPROPRIATE UTILITY COMPANY AT LEAST 7 DAYS BEFORE ANY EXCAVATION TO REQUEST EXACT FIELD LOCATION OF UTILITIES. IT SHALL BE THE RESPONSIBILITY OF THE CONTRACTOR TO RELOCATE ALL EXISTING UTILITIES HORIZONTALLY AND VERTICALLY WHICH CONFLICT WITH THE PROPOSED IMPROVEMENTS SHOWN ON THE PLANS.

BENCHMARKS  
AS SHOWN ON SURVEY DATED 5.8.2020. BENCHMARKS ARE LOCATED AT THE SOUTH CORNER ON WEST ALDER STREET, ELEVATION BENCHMARK MAG NAIL IN ASPHALT, ELEVATION 923.88 AND LOCATED AT THE EAST CORNER ON WEST ALDER STREET, ELEVATION BENCHMARK MAG NAIL IN ASPHALT, ELEVATION 927.67

FLOODNOTE  
ACCORDING TO THE ALTA SURVEY, THE SUBJECT PROPERTY LIES IN FLOOD ZONE C, NO SPECIAL FLOOD HAZARD AREA, MAP 530194 0435 B, 7/18/1975 NSFHA. THIS PROPERTY IS LOCATED WITHIN THE MILL CREEK FLOOD CONTROL DISTRICT.

LEGEND:

- PROPERTY LINE
- PROPOSED CURB & GUTTER
- LIMITS OF FULL DEPTH SAWCUT
- APPROXIMATE LIMIT OF WORK

- BOLLARD
- TRAFFIC/HANDICAP SIGN
- DIRECTIONAL SIGN
- SPEAKER BOX
- MENU BOARD
- LIGHT POLE
- AREA DRAIN(SEWER)

- GREASE INTERCEPTOR OR TRAP
- CLEAN-OUT
- DOUBLE CLEAN-OUT
- GAS METER
- WATER METER
- IRRIGATION METER
- MANHOLE
- CURB CUT
- DRAINAGE SLOPE AND DIRECTION

- XXXX EX EXISTING SPOT ELEVATION
- XXXX TP TOP OF PAVEMENT ELEVATION
- XXXX TC TOP OF CURB
- XXXX GT GUTTER
- XXXX VG VALLEY GUTTER
- XXXX FL ELEVATION OF GUTTER
- XXXX RIM TOP OF BMP ELEVATION, STORM OR SEWER STRUCTURE
- XXXX TW TOP OF WALL
- XXXX GR GROUND
- XXXX FF FINISH FLOOR
- XXXX SW SIDEWALK
- XXXX TG TOP OF GRATE
- XXXX (E) EXISTING
- XXXX (P) PROPOSED
- XXXX FG FINISH GRADE
- XXXX GB GRADE BREAK

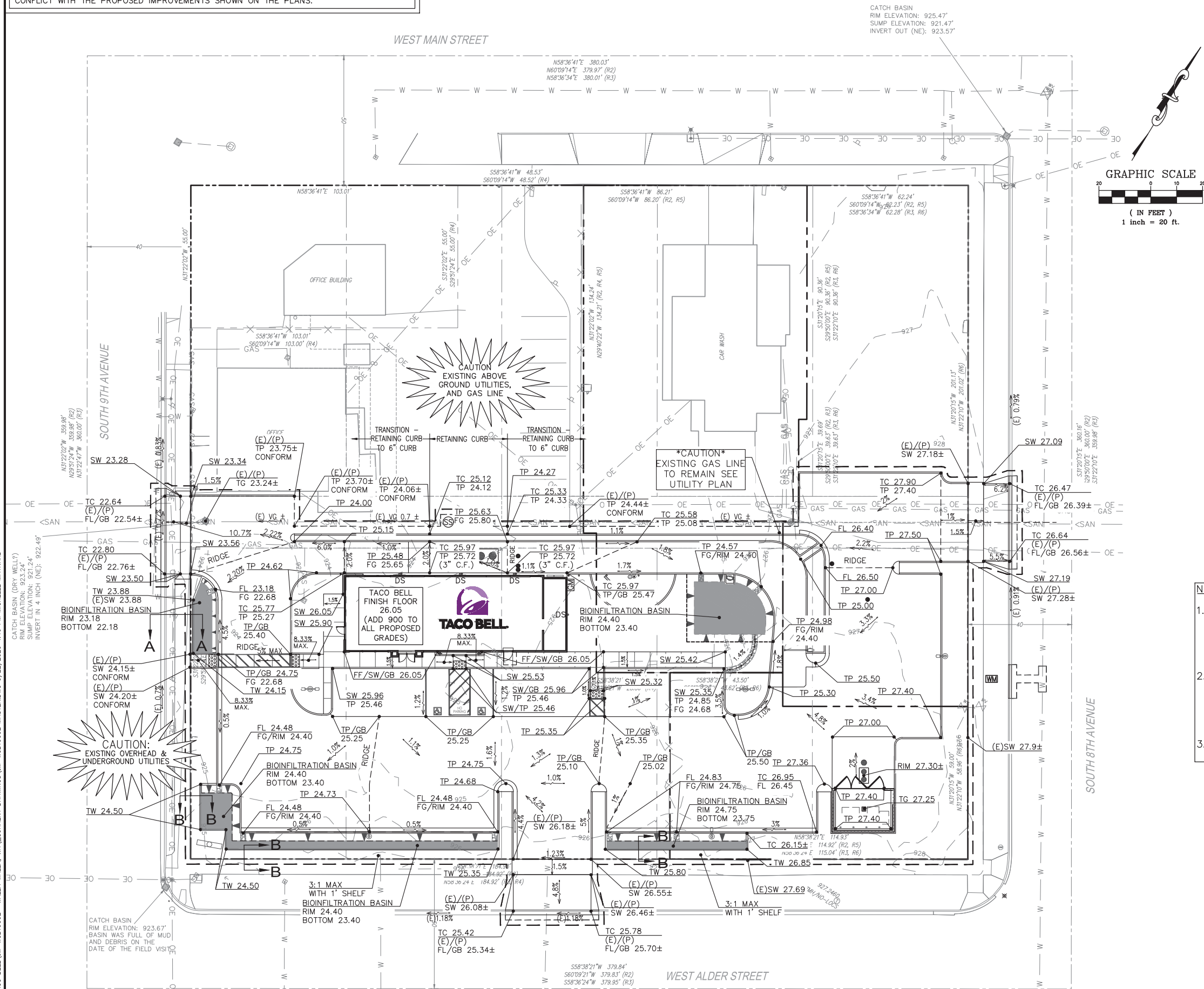
LANDSCAPED AREA/SELF-TREATING

BIOINFILTRATION BASIN WITH WALLS

BIOINFILTRATION BASIN WITH SIDE SLOPES

- NOTES:
- BRING ALL EXISTING AND PROPOSED MANHOLES, CLEANOUTS AND UTILITY BOXES WITHIN THE LIMITS OF CONSTRUCTION TO MATCH FINISH GRADE.
  - TC (TOP OF CURBS) ARE 6" ABOVE ADJACENT TP (TOP OF PAVEMENT) ELEVATION UNLESS NOTED OTHERWISE (I.E. AT RETAINING CURBS, OR CURB HEIGHTS OTHER THAN 6").
  - PORTION OF EXISTING GAS LINE TO REMAIN, SEE UTILITY PLAN.

J:\TACO BELL\JM-WCB19002 -WALLA WALLA, WA\ CURRENT DRAWINGS\JM-WCB19002 MASTER.DWG 9/22/2020 4:15 PM MICHELLE MAYNARD



Know what's below.  
Call before you dig.



9/22/2020



TACO BELL  
622 W. ALDER STREET  
WALLA WALLA, WA 99362  
EXPLORER LITE  
LARGE50

REV	DATE	DESCRIPTION	INITIAL	SUBMITAL	SEPA COMMENT	ADDRESSED
1	05/12/2020	INITIAL SUBMITAL				
2	09/22/2020	SEPA COMMENT ADDRESSED				
3						
4						
5						
6						
7						
8						
9						
10						
11						
12						
13						
14						
15						
16						
17						
18						
19						
20						
21						
22						
23						
24						
25						
26						
27						
28						
29						
30						
31						
32						
33						
34						
35						
36						
37						
38						
39						
40						
41						
42						
43						
44						
45						
46						
47						
48						
49						
50						
51						
52						
53						
54						
55						
56						
57						
58						
59						
60						
61						
62						
63						
64						
65						
66						
67						
68						
69						
70						
71						
72						
73						
74						
75						
76						
77						
78						
79						
80						
81						
82						
83						
84						
85						
86						
87						
88						
89						
90						
91						
92						
93						
94						
95						
96						
97						
98						
99						
100						

C 300

CAUTION NOTICE TO CONTRACTOR  
THE CONTRACTOR IS SPECIFICALLY CAUTIONED THAT THE LOCATION AND/OR ELEVATION OF EXISTING UTILITIES AS SHOWN ON THESE PLANS ARE BASED ON RECORDS OF THE VARIOUS UTILITY COMPANIES AND, WHERE POSSIBLE, MEASUREMENTS TAKEN IN THE FIELD. THE INFORMATION IS NOT TO BE RELIED ON AS BEING EXACT OR COMPLETE. THE CONTRACTOR MUST CALL THE APPROPRIATE UTILITY COMPANY AT LEAST 7 DAYS BEFORE ANY EXCAVATION TO REQUEST EXACT FIELD LOCATION OF UTILITIES. IT SHALL BE THE RESPONSIBILITY OF THE CONTRACTOR TO RELOCATE ALL EXISTING UTILITIES HORIZONTALLY AND VERTICALLY WHICH CONFLICT WITH THE PROPOSED IMPROVEMENTS SHOWN ON THE PLANS.

BENCHMARKS  
AS SHOWN ON SURVEY DATED 5.8.2020. BENCHMARKS ARE LOCATED AT THE SOUTH CORNER ON WEST ALDER STREET, ELEVATION BENCHMARK MAG NAIL IN ASPHALT, ELEVATION 923.88 AND LOCATED AT THE EAST CORNER ON WEST ALDER STREET, ELEVATION BENCHMARK MAG NAIL IN ASPHALT, ELEVATION 927.67

GENERAL LEGEND:

- PROPERTY LINE
- LIMITS OF FULL DEPTH SAWCUT
- EROSION LIMIT OF DISTURBANCE
- DRAINAGE SLOPE AND DIRECTION
- CHECK DAMS
- FENCING/ SILT FENCE
- S. DRAIN INLET PROTECTION
- CONCRETE WASHOUT
- MATERIAL STORAGE

EROSION AND SEDIMENT CONTROL MEASURES:

KEYNOTE	MEASURE	2020 STATE STANDARD SPECIFICATION	MAY 2019 TEMPORARY EROSION AND SEDIMENT CONTROL MANUAL REFERENCE
①	CHECK DAMS (SAND BAG OR COMPOST SOCK AS NOTED)	8-01.3(6)	5-1.1.4
②	CONSTRUCTION ENTRANCE	8-01.3(7)	5-1.1.34
③	10'X10' CONCRETE WASHOUT	8-01.3(5)	5-1.1.7
④	FENCING/ SILT FENCE	8-01.3(9)A & A2	5-1.1.32
⑤	S. DRAIN INLET PROTECTION	8-01.3(9)D	5-1.1.35
⑥	MATERIAL STORAGE	1-06.4	5-1.1.21
⑦	TEMPORARY SEDIMENT TRAP		5-1.1.30

SEQUENCE OF CONSTRUCTION ACTIVITIES:

- CONSTRUCT TEMPORARY CONSTRUCTION ENTRANCE AND SILT FENCE ACCORDING TO THE APPROXIMATE LOCATION SHOWN ON THE EROSION CONTROL PLAN.
- CONSTRUCT TEMPORARY INLET TREATMENT AROUND OPEN STORM DRAIN INLETS ACCORDING TO THE EROSION CONTROL PLAN.
- KEEP ALL STORM WATER POLLUTION PREVENTION MEASURES IN PLACE.
- BEGIN CLEARING AND GRADING OF SITE.
- INSTALL WATER, SANITARY SEWER AND STORM DRAIN AS SPECIFIED ON PLAN SHEETS.
- PAVE STREETS AND SIDEWALKS AS SPECIFIED ON PLAN SHEETS.
- RE-VEGETATE LOTS, PARKWAYS AND ALL DISTURBED AREAS.
- REMOVE ALL TEMPORARY EROSION CONTROL DEVICES.

MAINTENANCE:

- CONTRACTOR TO KEEP ALL STORM WATER POLLUTION PREVENTION MEASURES IN PLACE DURING CONSTRUCTION.
- CONTRACTOR SHALL MAINTAIN ALONG WITH THE SIGNED EFFECTIVE COPY OF SWP3 DRAWINGS AN UPDATED LIST IDENTIFYING ALL POTENTIAL SOURCES OF POLLUTION INCLUDING PORTA-POTTYS, FUEL TANKS, STAGING AREAS, WASTE CONTAINERS, CHEMICAL STORAGE AREAS, CONCRETE CURE, PAINTS SOLVENTS, ETC., AND A DESCRIPTION OF THE LOCATION.
- CONTRACTOR TO REMOVE ALL STORM WATER POLLUTION PREVENTION MEASURES AFTER CONSTRUCTION IS COMPLETE AND INSPECTED FOR APPROVAL. LONG TERM MAINTENANCE TO BE PROVIDED BY OWNER.

NOTES:

- CONTRACTOR SHALL POLICE SITE REGULARLY AND AND KEEP SITE FREE OF TRASH AND CONSTRUCTION DEBRIS.
- ALL EROSION CONTROL DEVICES SHALL BE CONSTRUCTED AND MAINTAINED IN COMPLIANCE WITH CITY STANDARD EROSION CONTROL DETAILS
- TOTAL DISTURBED AREA=0.976 ACRES.
- REFER TO LANDSCAPE PLAN FOR FINAL GROUND STABILIZATION
- REFER TO SHEET C410 FOR DETAILS.
- INLETS IN PUBLIC RIGHT OF WAY CAN USE EITHER MEASURE SHOWN ON DETAIL SHEET AS APPROVED BY INSPECTOR.

2019 SWMMEW STANDARD SWPPP NOTES:

- APPROVAL OF THIS ESC PLAN DOES NOT CONSTITUTE AN APPROVAL OF PERMANENT ROAD OR DRAINAGE DESIGN (E.G., SIZE AND LOCATION OF ROADS, PIPES, RESTRICTORS, CHANNELS, RETENTION FACILITIES, UTILITIES, ETC.).
- THE IMPLEMENTATION OF THIS ESC PLAN AND THE CONSTRUCTION, MAINTENANCE, REPLACEMENT, AND UPGRADING OF THESE ESC BMPs IS THE RESPONSIBILITY OF THE APPLICANT UNTIL ALL CONSTRUCTION IS COMPLETED AND APPROVED AND VEGETATION/LANDSCAPING IS ESTABLISHED.
- CLEARLY FLAG THE BOUNDARIES OF THE CLEARING LIMITS SHOWN ON THIS PLAN IN THE FIELD PRIOR TO CONSTRUCTION. DURING THE CONSTRUCTION PERIOD, NO DISTURBANCE BEYOND THE FLAGGED CLEARING LIMITS SHALL BE PERMITTED. THE FLAGGING SHALL BE MAINTAINED BY THE APPLICANT FOR THE DURATION OF CONSTRUCTION.
- CONSTRUCT THE ESC BMPs SHOWN ON THIS PLAN IN CONJUNCTION WITH ALL CLEARING AND GRADING ACTIVITIES, AND IN SUCH A MANNER AS TO ENSURE THAT SEDIMENT AND SEDIMENT LADEN WATER DO NOT ENTER THE DRAINAGE SYSTEM, ROADWAYS, OR VIOLATE APPLICABLE WATER STANDARDS.
- THE ESC BMPs SHOWN ON THIS PLAN ARE THE MINIMUM REQUIREMENTS FOR ANTICIPATED SITE CONDITIONS. DURING THE CONSTRUCTION PERIOD, UPGRADE THESE ESC BMPs AS NEEDED FOR UNEXPECTED STORM EVENTS AND TO ENSURE THAT SEDIMENT AND SEDIMENT-LADEN WATER DO NOT LEAVE THE SITE.
- THE APPLICANT SHALL INSPECT THE ESC BMPs DAILY AND MAINTAIN THEM AS NECESSARY TO ENSURE THEIR CONTINUED FUNCTIONALITY.
- INSPECT AND MAINTAIN THE ESC BMPs ON INACTIVE SITES A MINIMUM OF ONCE A MONTH OR WITHIN THE 48 HOURS FOLLOWING A MAJOR STORM EVENT (24-HOUR STORM EVENT WITH A 10-YEAR OR GREATER RECURRENCE INTERVAL).
- AT NO TIME SHALL THE SEDIMENT EXCEED 60 PERCENT OF THE SUMP DEPTH OR HAVE LESS THAN 6 INCHES OF CLEARANCE FROM THE SEDIMENT SURFACE TO THE INVERT OF THE LOWEST PIPE. ALL CATCH BASINS AND CONVEYANCE LINES SHALL BE CLEANED PRIOR TO PAVING. THE CLEANING OPERATION SHALL NOT FLUSH SEDIMENT LADEN WATER INTO THE DOWNSTREAM SYSTEM.
- INSTALL STABILIZED CONSTRUCTION ENTRANCES AT THE BEGINNING OF CONSTRUCTION AND MAINTAIN FOR THE DURATION OF THE PROJECT. ADDITIONAL MEASURES MAY BE REQUIRED TO ENSURE THAT ALL PAVED AREAS ARE KEPT CLEAN FOR THE DURATION OF THE PROJECT.



Know what's below.  
Call before you dig.



19120 SE 34th St., Suite 115  
Vancouver, WA 98683

Ph. 214-491-1830

John Measels, PE  
CIVIL ENGINEER



9/22/2020



TACO BELL

622 W. ALDER STREET  
WALLA WALLA, WA 99362

EXPLORER LITE

LARGE50

REV	DATE	DESCRIPTION	NAME
01	05/12/2020	INITIAL SUBMITAL	YOU2
02	09/22/2020	SEPA COMMENT ADDRESSED	
PROJECT NO:	JM-WCB9002.0		
DRAWN BY:	GAB 3		
CHECKED BY:	JACE		
ISSUE DATE:	09/22/2020		

SOIL EROSION AND  
SEDIMENT CONTROL PLAN

C 400





**BENCHMARKS**

AS SHOWN ON SURVEY DATED 5.8.2020. BENCHMARKS ARE LOCATED AT THE SOUTH CORNER ON WEST ALDER STREET, ELEVATION BENCHMARK MAG NAIL IN ASPHALT, ELEVATION 923.88 AND LOCATED AT THE EAST CORNER ON WEST ALDER STREET, ELEVATION BENCHMARK MAG NAIL IN ASPHALT, ELEVATION 927.67

### LEGEND:

	PROPERTY LINE
	PROPOSED CURB & GUTTER
	LIMITS OF FULL DEPTH SAWCUT
	EXISTING CONTOUR
	PROPOSED CONTOUR

	BOLLARD		GREASE TRAP
	TRAFFIC/HANDICAP SIGN		CLEAN-OUT
	DIRECTIONAL SIGN		DOUBLE CLEAN-OUT
	MENU BOARD		GAS METER
	LIGHT POLE		WATER METER
	BUILDING UP LIGHTS		IRRIGATION METER
	AREA DRAIN		MANHOLE
	BUILDING DOWNSPOUT		CURB INLET
			DRAINAGE SLOPE AND DIRECTION

■ ■ ■ ■ ■ DRAINAGE DIVIDE

X
X.XX sf

Area  
Square Feet

The diagram illustrates four types of bioinfiltration basins, each with a corresponding cross-section and plan view.

- WATERSHED BOUNDARY:** The cross-section shows a series of black rectangles representing the watershed boundary. The plan view shows a rectangular area with a grid of small squares, representing the impervious area.
- IMPERVIOUS AREA (COLOR PER WATERSHED):** The cross-section shows a rectangular area with a grid of small squares, representing the impervious area. The plan view shows a rectangular area with a grid of small squares, representing the impervious area.
- LANDSCAPED AREA:** The cross-section shows a rectangular area with a grid of small squares, representing the landscaped area. The plan view shows a rectangular area with a grid of small squares, representing the landscaped area.
- BIOINFILTRATION BASIN WITH WALLS:** The cross-section shows a rectangular area with a grid of small squares, representing the bioinfiltration basin with walls. The plan view shows a rectangular area with a grid of small squares, representing the bioinfiltration basin with walls.
- BIOINFILTRATION BASIN WITH SIDE SLOPES:** The cross-section shows a rectangular area with a grid of small squares, representing the bioinfiltration basin with side slopes. The plan view shows a rectangular area with a grid of small squares, representing the bioinfiltration basin with side slopes.



**TACO BELL**  
622 W. ALDER STREET  
WALLA WALLA, WA 99362  
**EXPLORER LITE**  
LARGE50

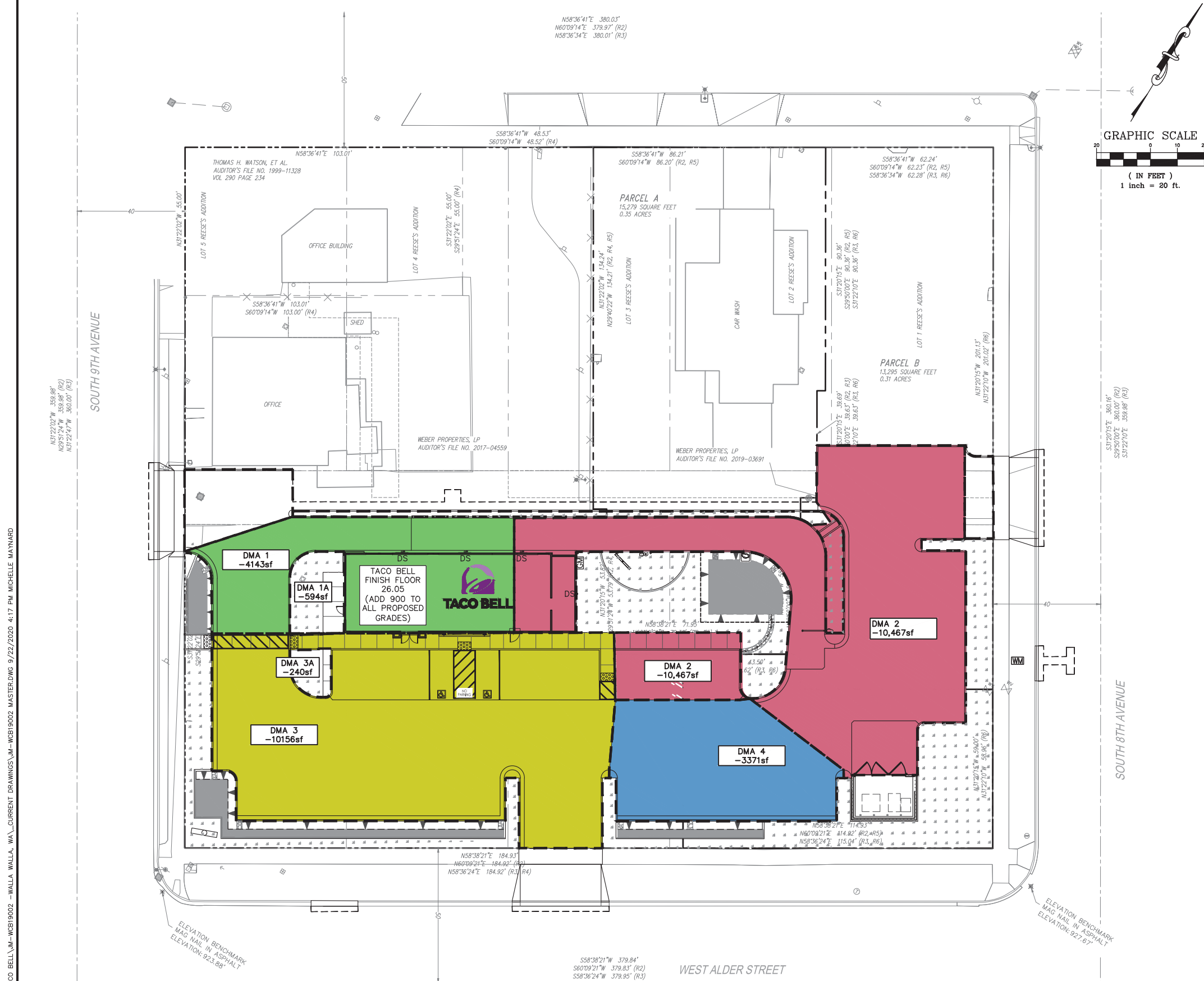
PROJECT NO:	REV	DATE	DESCRIPTION	NAME
14-W-1002.0		05/12/2020	INITIAL SUBMITTAL	YOU?
DRAWN BY:		09/22/2020	SEPA COMMENT ADDRESSED	
GAB 3				
CHECKED BY:				
JMCE				
ISSUE DATE:				
09/22/2020				

STORMWATER SITE PLAN

C 500

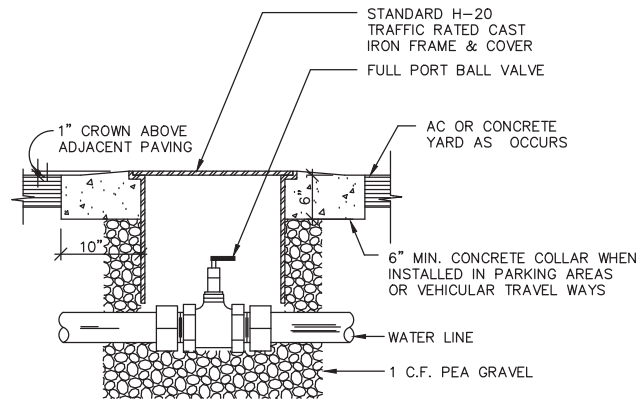


**Know what's below.  
Call before you dig.**



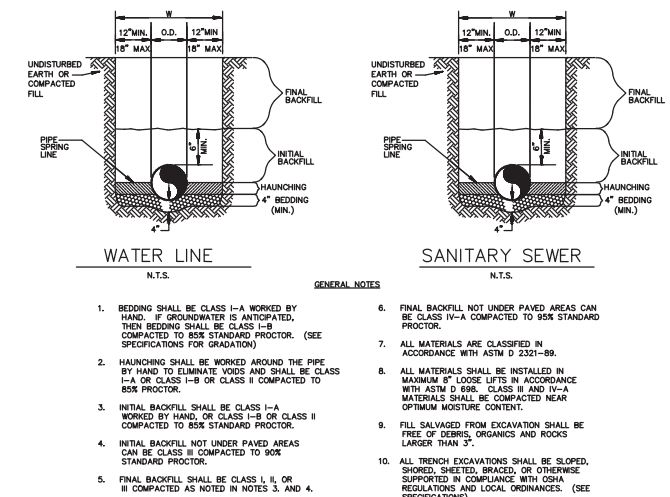


J:\TACO BELL\JM-WCB19002 -WALLA WALLA, WA\ CURRENT DRAWINGS\JM-WCB19002 MASTER.DWG 9/22/2020 4:17 PM MICHELLE MAYNARD



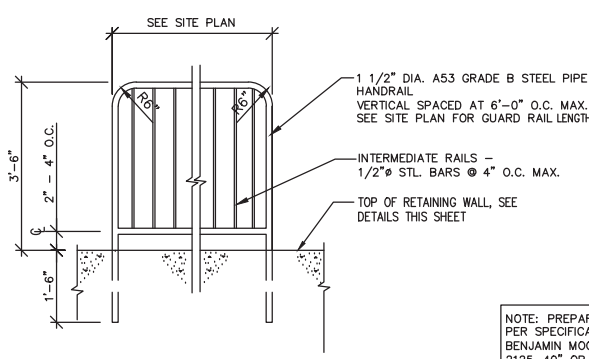
WATER SHUT OFF VALVE

N.T.S.

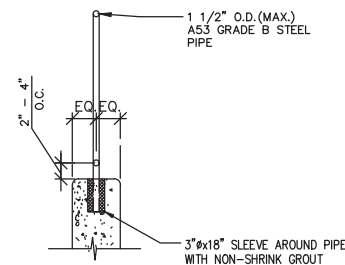


SANITARY SEWER AND WATER LINE TRENCH BEDDING

N.T.S.



ELEVATION

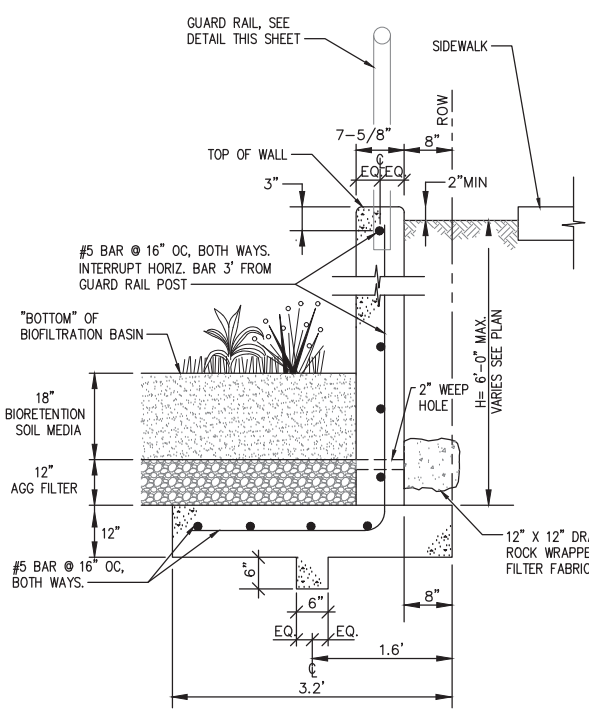


SECTION

NOTE: PREPARE & PAINT METAL RAIL PER SPECIFICATIONS- COLOR: BENJAMIN MOORE "SHADOW GRAY 2125-40" OR EQUAL

GUARD RAIL ON WALL

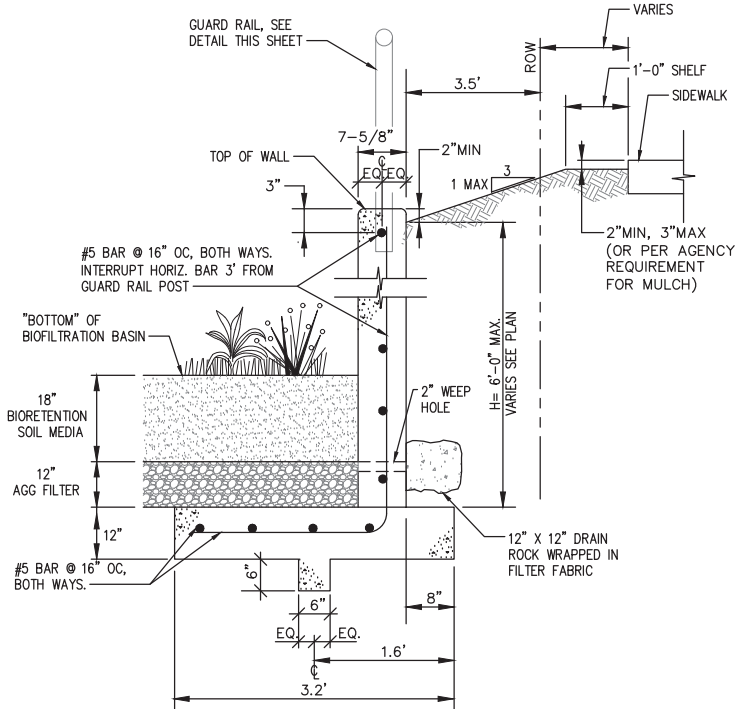
N.T.S.



SECTION A-A (SHEET C 300)

RETAINING WALL

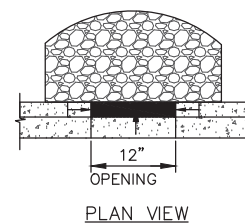
N.T.S.



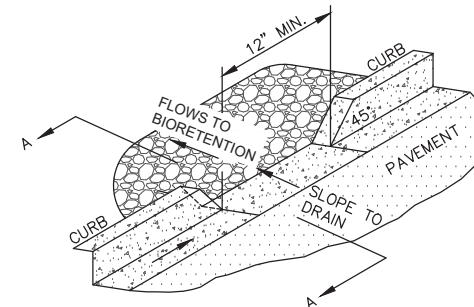
SECTION B-B (SHEET C 300)

BIORETENTION STORM WATER TREATMENT BASIN SECTION

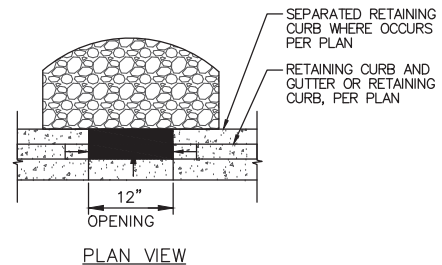
N.T.S.



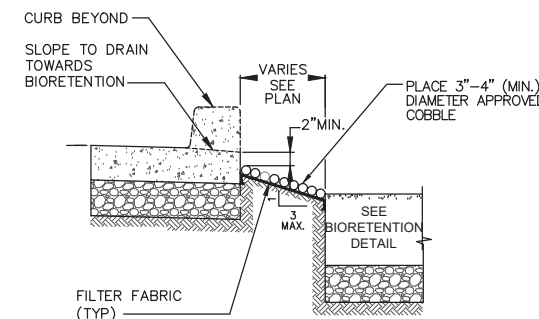
PLAN VIEW



ISOMETRIC



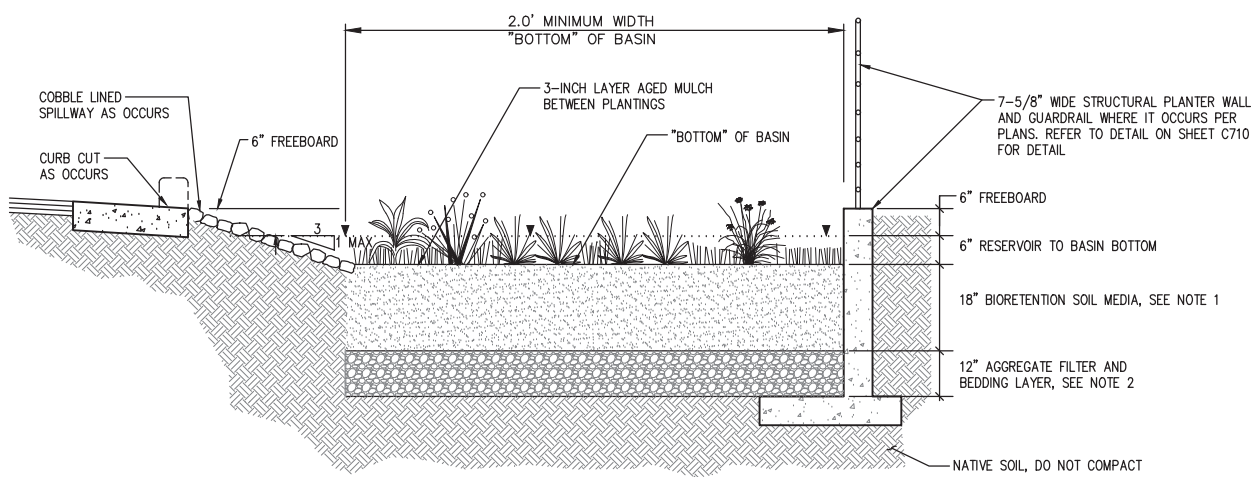
PLAN VIEW



SECTION A-A

BIORETENTION STORM WATER TREATMENT BASIN - COBBLE SPILLWAY DISSIPATOR

N.T.S.



NOTES:  
1. BIORETENTION SOIL MEDIA (BSM MIX) PER SPECIFICATIONS IN 2019 SWMMW.  
2. 12-INCH THICK LAYER FOLLOWING TABLE 5.14 FROM 2019 SWMMW. BELOW THIS LAYER - SCARIFY FINISHED SUBGRADE AND INCORPORATE COMPOST INTO LOOSE SUBGRADE 3-6" DEPTH TYPICAL.

**JM CIVIL**  
Engineering  
19120 SE 34th St., Suite 115  
Vancouver, WA 98683  
Ph. 214-491-1830  
John Measels, PE  
CIVIL ENGINEER

**Professional Engineer**  
9/22/2020

**TACO BELL**

**TACO BELL**  
622 W. ALDER STREET  
WALLA WALLA, WA 99362  
**EXPLORER LITE**  
LARGE50

REV	DATE	DESCRIPTION	INITIAL	SUBMITAL	SEPA COMMENT	ADDRESSED
05/12/2020	09/22/2020					
PROJECT NO:	JM-WCB19002.0					
DRAWN BY:	GAB 3					
CHECKED BY:	JACE					
ISSUE DATE:	09/22/2020					

**C 710**