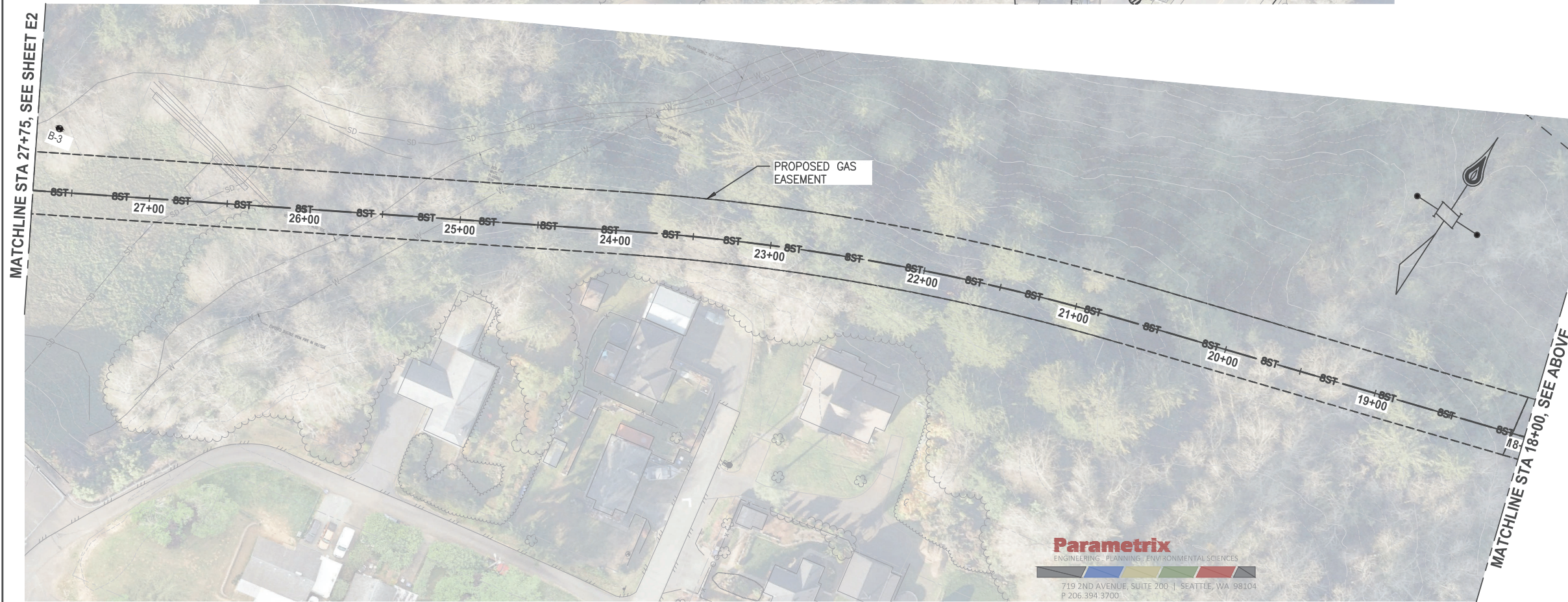
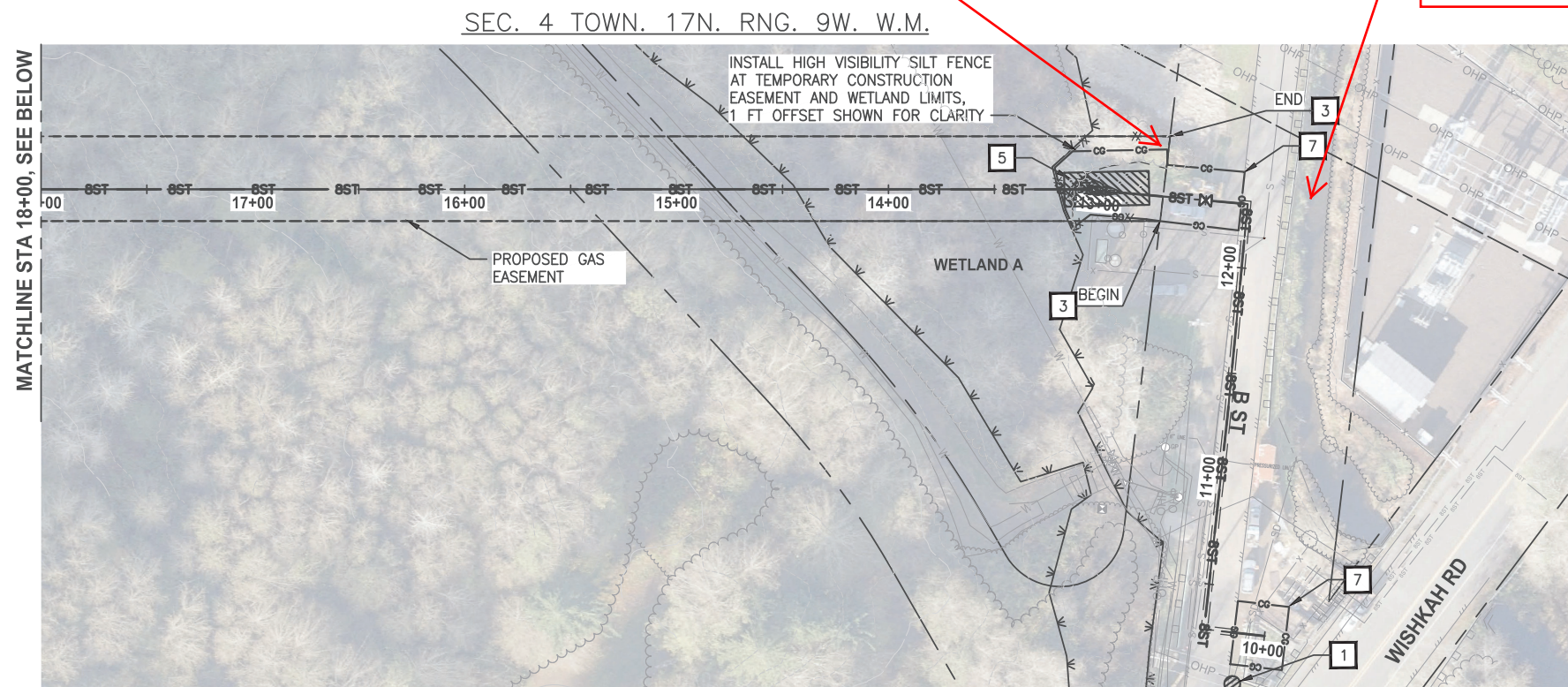







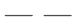
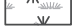


Discharge Point 1
Stewart Creek



- ## NOTES:
- 1 STORM DRAIN INLET PROTECTION PER WSDOT STD PLAN 1-40.20-00.
 - 2 SILT FENCE PER WSDOT STD PLAN 1-30.15-02.
 - 3 HIGH VISIBILITY SILT FENCE PER WSDOT STD PLAN 1-30.17-01.
 - 4 STRAW WATTLES PER WSDOT STD PLAN 1-30.30-02.
 - 5 HORIZONTAL DIRECTIONAL DRILL STAGING AREA.
 - 6 STABILIZED CONSTRUCTION ENTRANCE WITH 1-FT DEPTH PERMEABLE BALLAST PER SECTION 9-03.9(2) OF THE WSDOT STANDARD SPECIFICATIONS.
 - 7 CLEARING AND GRUBBING PER WSDOT STANDARD SPECIFICATION 2-01.

LEGEND

- | | |
|---|---|
|  | STORM DRAIN INLET PROTECTION |
|  | SILT FENCE |
|  | HIGH VISIBILITY SILT FENCE |
|  | STRAW WATTLE |
|  | HORIZONTAL DIRECTIONAL DRILL STAGING AREA |
|  | CLEARING LIMITS |
|  | SAWCUT |
|  | WETLAND |
|  | STABILIZED CONSTRUCTION ENTRANCE |

GENERAL NOTES:

1. CONTRACTOR TO PROVIDE CONTINGENCY PLAN AND EQUIPMENT TO PROTECT WETLAND FROM INADVERTANT DRILLING FLUID RELEASE. SEE SPECIFICATIONS FOR REQUIREMENTS.
2. RESTORE WETLAND BUFFER, SEE RESTORATION PLAN SHEET R1.
3. COORDINATE WITH PROPERTY OWNERS FOR PIPE LAYDOWN/PULLBACK SCHEDULE.
4. CONTRACTOR SHALL PROVIDE EMERGENCY ACCESS AVAILABILITY AT ALL TIMES.
5. SEDIMENT LADEN WATER SHALL NOT BE DISCHARGED INTO ANY SURFACE WATER OR STORMWATER CONVEYANCE.
6. STREETS SHALL BE KEPT CLEAN OF DIRT AND SEDIMENT. ROADWAY SHALL NOT BE FLUSHED WITH WATER.
7. CONTRACTOR TO PROVIDE A DEWATERING PLAN MEETING CLEAN WATER STANDARDS IN THE EVENT GROUND WATER IS ENCOUNTERED.

(HALF SCALE 11X17)	(FULL SCALE 22X34)
HORZ: 1"=80'	HORZ: 1"=40'
VERT: 1"=40'	VERT: 1"=20'

CALL BEFORE YOU DIG:
UTILITIES UNDERGROUND
LOCATION CENTER
811

CONTRACTOR TO VERIFY SIZE, TYPE AND LOCATION OF EXISTING UTILITIES PRIOR TO CONSTRUCTION. NOTIFY PROJECT ENGINEER IMMEDIATELY IF CONFLICTS ARISE.



NO	REVISION	BY	DATE



<i>CAD Tech:</i> B. JOHNSON	<i>Scale:</i> AS SHOWN
<i>CAD Review:</i> M. RADVANY	<i>Grid #:</i>
<i>Engineer:</i> J. CHAVEZ, JR.	<i>Date:</i> MAR 2021
<i>Design Review:</i> R. CUSHMAN	
<i>Funding Project #:</i> 286039	
<i>Work Order Number:</i> 251913	
<i>Drawing No:</i>	

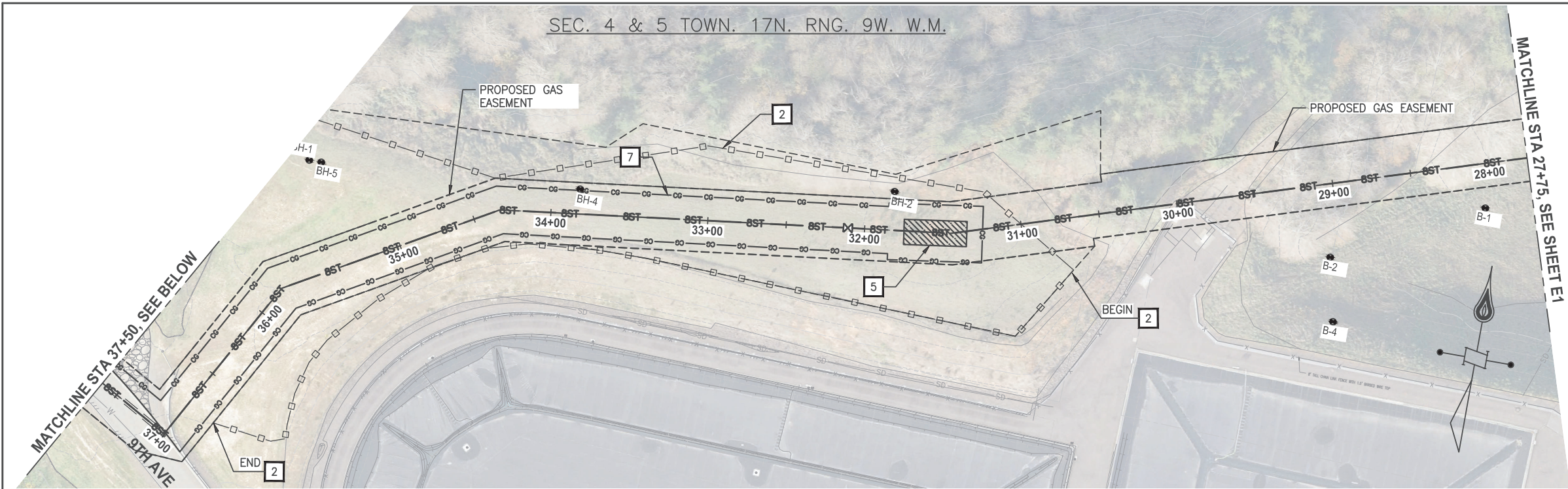
BASICH BLVD. 8" HIGH PRESSURE
PIPELINE PROJECT

ABERDEEN, WA
GRAYS HARBOR COUNTY
ENVIRONMENTAL COMPLIANCE

SEC. 4,5,6,7 TOWN. 17N RNG. 9W

E1

25 OF 41



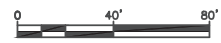
- NOTES:**
- 1 STORM DRAIN INLET PROTECTION PER WSDOT STD PLAN I-40.20-00.
 - 2 SILT FENCE PER WSDOT STD PLAN I-30.15-02.
 - 3 HIGH VISIBILITY SILT FENCE PER WSDOT STD PLAN I-30.17-01.
 - 4 STRAW WATTLES PER WSDOT STD PLAN I-30.30-02.
 - 5 HORIZONTAL DIRECTIONAL DRILL STAGING AREA.
 - 6 STABILIZED CONSTRUCTION ENTRANCE WITH 1-FT DEPTH PERMEABLE BALLAST PER SECTION 9-03.9(2) OF THE WSDOT STANDARD SPECIFICATIONS.
 - 7 CLEARING AND GRUBBING PER WSDOT STANDARD SPECIFICATION 2-01.

- LEGEND**
- STORM DRAIN INLET PROTECTION
 - SILT FENCE
 - HIGH VISIBILITY SILT FENCE
 - STRAW WATTLE
 - HORIZONTAL DIRECTIONAL DRILL STAGING AREA
 - CLEARING LIMITS
 - SAWCUT
 - WETLAND
 - STABILIZED CONSTRUCTION ENTRANCE

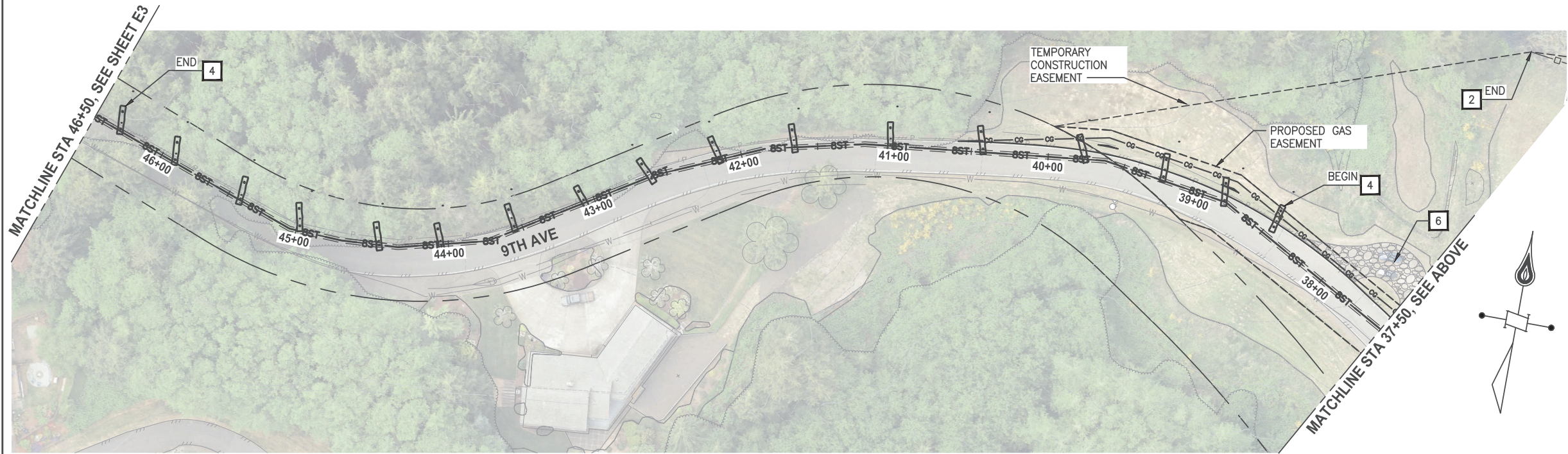
- GENERAL NOTES:**
1. CONTRACTOR TO PROVIDE CONTINGENCY PLAN AND EQUIPMENT TO PROTECT WETLAND FROM INADVERTANT DRILLING FLUID RELEASE. SEE SPECIFICATIONS FOR REQUIREMENTS.
 2. RESTORE WETLAND BUFFER, SEE RESTORATION PLAN SHEET R1.
 3. COORDINATE WITH PROPERTY OWNERS FOR PIPE LAYDOWN/PULLBACK SCHEDULE.
 4. CONTRACTOR SHALL PROVIDE EMERGENCY ACCESS AVAILABILITY AT ALL TIMES.
 5. SEDIMENT LADEN WATER SHALL NOT BE DISCHARGED INTO ANY SURFACE WATER OR STORMWATER CONVEYANCE.
 6. STREETS SHALL BE KEPT CLEAN OF DIRT AND SEDIMENT. ROADWAY SHALL NOT BE FLUSHED WITH WATER.
 7. CONTRACTOR TO PROVIDE A DEWATERING PLAN MEETING CLEAN WATER STANDARDS IN THE EVENT GROUND WATER IS ENCOUNTERED.

(HALF SCALE 11X17) (FULL SCALE 22X34)
HORZ: 1"=80' HORZ: 1"=40'
VERT: 1"=40' VERT: 1"=20'

CALL BEFORE YOU DIG:
UTILITIES UNDERGROUND
LOCATION CENTER
811



CONTRACTOR TO VERIFY SIZE, TYPE AND LOCATION OF EXISTING UTILITIES PRIOR TO CONSTRUCTION. NOTIFY PROJECT ENGINEER IMMEDIATELY IF CONFLICTS ARISE.



Parametrix
ENGINEERING · PLANNING · ENVIRONMENTAL SCIENCES
719 2ND AVENUE, SUITE 200 | SEATTLE, WA 98104
P 206.394.3700
WWW.PARAMETRIX.COM

CASCADE NATURAL GAS
CORPORATION
A Subsidiary of MDU Resources Group, Inc.
In the Community to Serve®

REBECCA S. CUSHMAN
REGISTERED PROFESSIONAL ENGINEER
DRAFT

CAD Tech: B. JOHNSON
CAD Review: M. RADVANY
Engineer: J. CHAVEZ, JR.
Design Review: R. CUSHMAN
Funding Project #: 286039
Work Order Number: 251913
Drawing No:

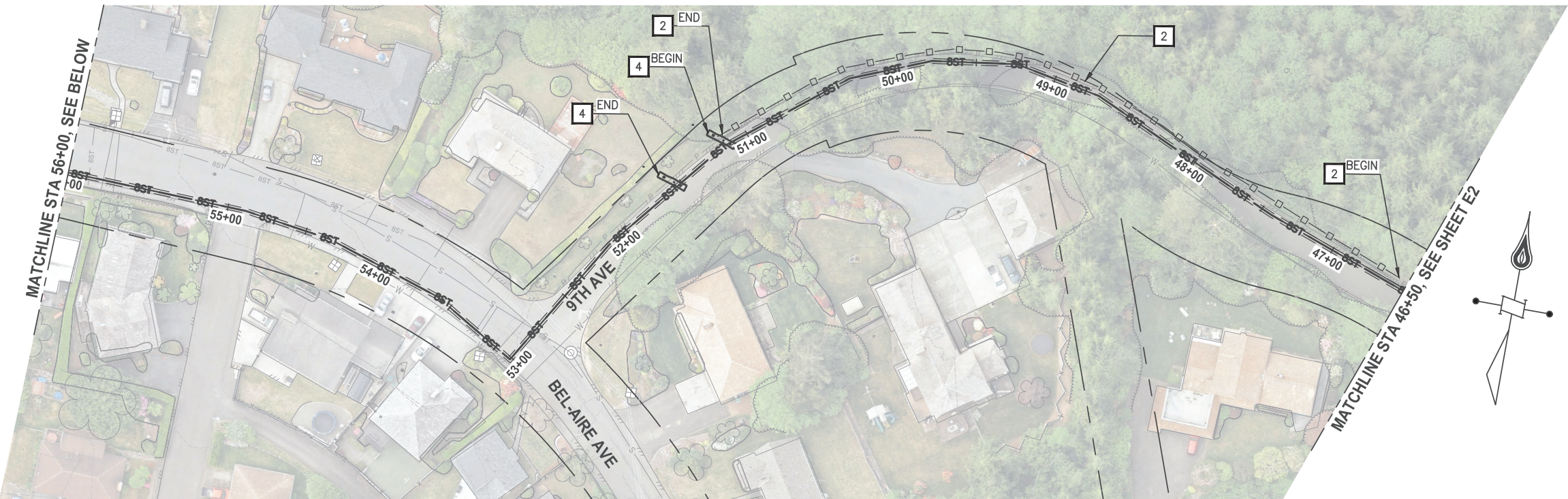
Scale: AS SHOWN
Grid #:
Date: MAR 2021

BASICH BLVD. 8" HIGH PRESSURE
PIPELINE PROJECT
ABERDEEN, WA
GRAYS HARBOR COUNTY
ENVIRONMENTAL COMPLIANCE
SEC. 4,5,6,7 TOWN. 17N RNG. 9W

E2
26 OF 41

NO	REVISION	BY	DATE

SEC. 5 TOWN. 17N. RNG. 9W. W.M.



NOTES:

- 1 STORM DRAIN INLET PROTECTION PER WSDOT STD PLAN I-40.20-00.
- 2 SILT FENCE PER WSDOT STD PLAN I-30.15-02.
- 3 HIGH VISIBILITY SILT FENCE PER WSDOT STD PLAN I-30.17-01.
- 4 STRAW WATTLES PER WSDOT STD PLAN I-30.30-02.
- 5 HORIZONTAL DIRECTIONAL DRILL STAGING AREA.
- 6 STABILIZED CONSTRUCTION ENTRANCE WITH 1-FT DEPTH PERMEABLE BALLAST PER SECTION 9-03.9(2) OF THE WSDOT STANDARD SPECIFICATIONS.
- 7 CLEARING AND GRUBBING PER WSDOT STANDARD SPECIFICATION 2-01.

LEGEND

- STORM DRAIN INLET PROTECTION
- SILT FENCE
- HIGH VISIBILITY SILT FENCE
- STRAW WATTLE
- HORIZONTAL DIRECTIONAL DRILL STAGING AREA
- CLEARING LIMITS
- SAWCUT
- WETLAND
- STABILIZED CONSTRUCTION ENTRANCE

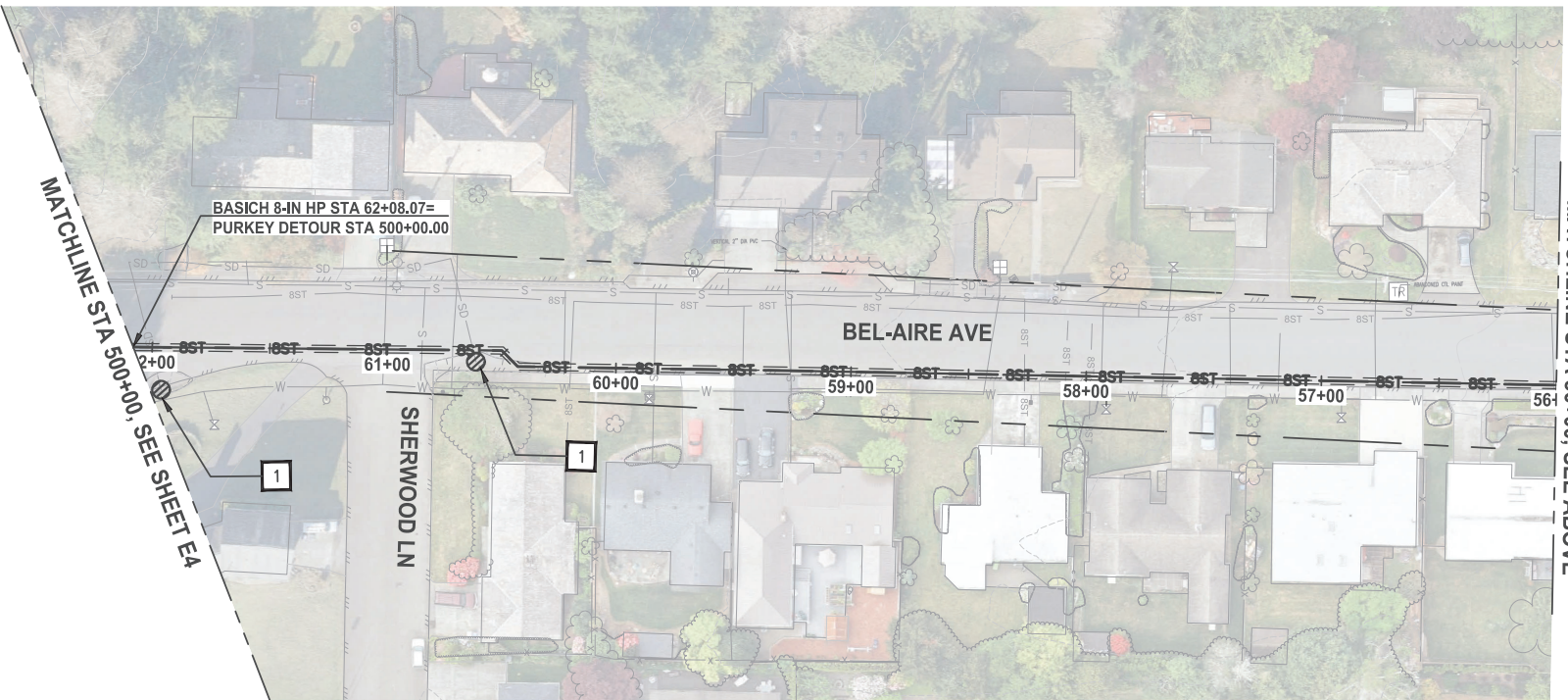
GENERAL NOTES:

1. CONTRACTOR TO PROVIDE CONTINGENCY PLAN AND EQUIPMENT TO PROTECT WETLAND FROM INADVERTANT DRILLING FLUID RELEASE. SEE SPECIFICATIONS FOR REQUIREMENTS.
2. RESTORE WETLAND BUFFER, SEE RESTORATION PLAN SHEET R1.
3. COORDINATE WITH PROPERTY OWNERS FOR PIPE LAYDOWN/PULLBACK SCHEDULE.
4. CONTRACTOR SHALL PROVIDE EMERGENCY ACCESS AVAILABILITY AT ALL TIMES.
5. SEDIMENT LADEN WATER SHALL NOT BE DISCHARGED INTO ANY SURFACE WATER OR STORMWATER CONVEYANCE.
6. STREETS SHALL BE KEPT CLEAN OF DIRT AND SEDIMENT. ROADWAY SHALL NOT BE FLUSHED WITH WATER.
7. CONTRACTOR TO PROVIDE A DEWATERING PLAN MEETING CLEAN WATER STANDARDS IN THE EVENT GROUND WATER IS ENCOUNTERED.

(HALF SCALE 11X17) (FULL SCALE 22X34)
HORZ: 1"=80' HORZ: 1"=40'
VERT: 1"=40' VERT: 1"=20'

CALL BEFORE YOU DIG:
UTILITIES UNDERGROUND
LOCATION CENTER
811

CONTRACTOR TO VERIFY SIZE, TYPE AND
LOCATION OF EXISTING UTILITIES PRIOR TO
CONSTRUCTION. NOTIFY PROJECT ENGINEER
IMMEDIATELY IF CONFLICTS ARISE.



Parametrix
ENGINEERING · PLANNING · ENVIRONMENTAL SCIENCES
719 2ND AVENUE, SUITE 200 | SEATTLE, WA 98104
P 206.394.3700
WWW.PARAMETRIX.COM

**CASCADE
NATURAL GAS**
CORPORATION
A Subsidiary of MDU Resources Group, Inc.
In the Community to Serve®



CAD Tech: B. JOHNSON
CAD Review: M. RADVANY
Engineer: J. CHAVEZ, JR.
Design Review: R. CUSHMAN
Funding Project #: 286039
Work Order Number: 251913
Drawing No:

Scale: AS SHOWN
Grid #:
Date: MAR 2021

BASICH BLVD. 8" HIGH PRESSURE
PIPELINE PROJECT

ABERDEEN, WA
GRAYS HARBOR COUNTY
ENVIRONMENTAL COMPLIANCE

SEC. 4,5,6,7 TOWN. 17N RNG. 9W

E3

27 OF 41

NO	REVISION	BY	DATE

SEC. 5 TOWN. 17N. RNG. 9W. W.M.


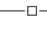
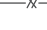

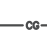
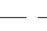



BASICH 8-IN HP STA 62+08.07=
PURKEY DETOUR STA 500+00.00

MATCHLINE STA 500+00,
SEE SHEET E3

NOTES:

- 1
- STORM DRAIN INLET PROTECTION PER WSDOT STD PLAN I-40.20-00.
- 2
- SILT FENCE PER WSDOT STD PLAN I-30.15-02.
- 3
- HIGH VISIBILITY SILT FENCE PER WSDOT STD PLAN I-30.17-01.
- 4
- STRAW WATTLES PER WSDOT STD PLAN I-30.30-02.
- 5
- HORIZONTAL DIRECTIONAL DRILL STAGING AREA.
- 6
- STABILIZED CONSTRUCTION ENTRANCE WITH 1-FT DEPTH PERMEABLE BALLAST PER SECTION 9-03.9(2) OF THE WSDOT STANDARD SPECIFICATIONS.
- 7
- CLEARING AND GRUBBING PER WSDOT STANDARD SPECIFICATION 2-01.

LEGEND

-  STORM DRAIN INLET PROTECTION
-  SILT FENCE
-  HIGH VISIBILITY SILT FENCE
-  STRAW WATTLE
-  HORIZONTAL DIRECTIONAL DRILL STAGING AREA
-  CLEARING LIMITS
-  SAWCUT
-  WETLAND
-  STABILIZED CONSTRUCTION ENTRANCE

GENERAL NOTES:

1.
- CONTRACTOR TO PROVIDE CONTINGENCY PLAN AND EQUIPMENT TO PROTECT WETLAND FROM INADVERTANT DRILLING FLUID RELEASE. SEE SPECIFICATIONS FOR REQUIREMENTS.
2.
- RESTORE WETLAND BUFFER, SEE RESTORATION PLAN SHEET R1.
3.
- COORDINATE WITH PROPERTY OWNERS FOR PIPE LAYDOWN/PULLBACK SCHEDULE.
4.
- CONTRACTOR SHALL PROVIDE EMERGENCY ACCESS AVAILABILITY AT ALL TIMES.
5.
- SEDIMENT LADEN WATER SHALL NOT BE DISCHARGED INTO ANY SURFACE WATER OR STORMWATER CONVEYANCE.
6.
- STREETS SHALL BE KEPT CLEAN OF DIRT AND SEDIMENT. ROADWAY SHALL NOT BE FLUSHED WITH WATER.
7.
- CONTRACTOR TO PROVIDE A DEWATERING PLAN MEETING CLEAN WATER STANDARDS IN THE EVENT GROUND WATER IS ENCOUNTERED.

(HALF SCALE 11X17)

(FULL SCALE 22X34)

HORZ: 1"=80'

HORZ: 1"=40'

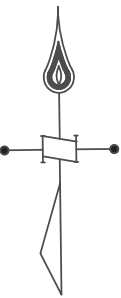
VERT: 1"=40'

VERT: 1"=20'

CALL BEFORE YOU DIG:
UTILITIES UNDERGROUND
LOCATION CENTER
811

CONTRACTOR TO VERIFY SIZE, TYPE AND
LOCATION OF EXISTING UTILITIES PRIOR TO
CONSTRUCTION. NOTIFY PROJECT ENGINEER
IMMEDIATELY IF CONFLICTS ARISE.

0 40' 80'



NPDES Sampling
Point 5

Discharge Point 5
Un-named Trib
420' southeast of
sample point 5

Parametrix
ENGINEERING · PLANNING · ENVIRONMENTAL SCIENCES
719 2ND AVENUE, SUITE 200 | SEATTLE, WA 98104
P 206.394.3700
WWW.PARAMETRIX.COM

**CASCADE
NATURAL GAS**
CORPORATION
A Subsidiary of MDU Resources Group, Inc.
In the Community to Serve®



CAD Tech:	B. JOHNSON	Scale:	AS SHOWN
CAD Review:	M. RADVANY	Grid #:	
Engineer:	J. CHAVEZ, JR.	Date:	MAR 2021
Design Review:	R. CUSHMAN		
Funding Project #:	286039		
Work Order Number:	251913		
Drawing No:			

BASICH BLVD. 8" HIGH PRESSURE
PIPELINE PROJECT

ABERDEEN, WA
GRAYS HARBOR COUNTY
ENVIRONMENTAL COMPLIANCE

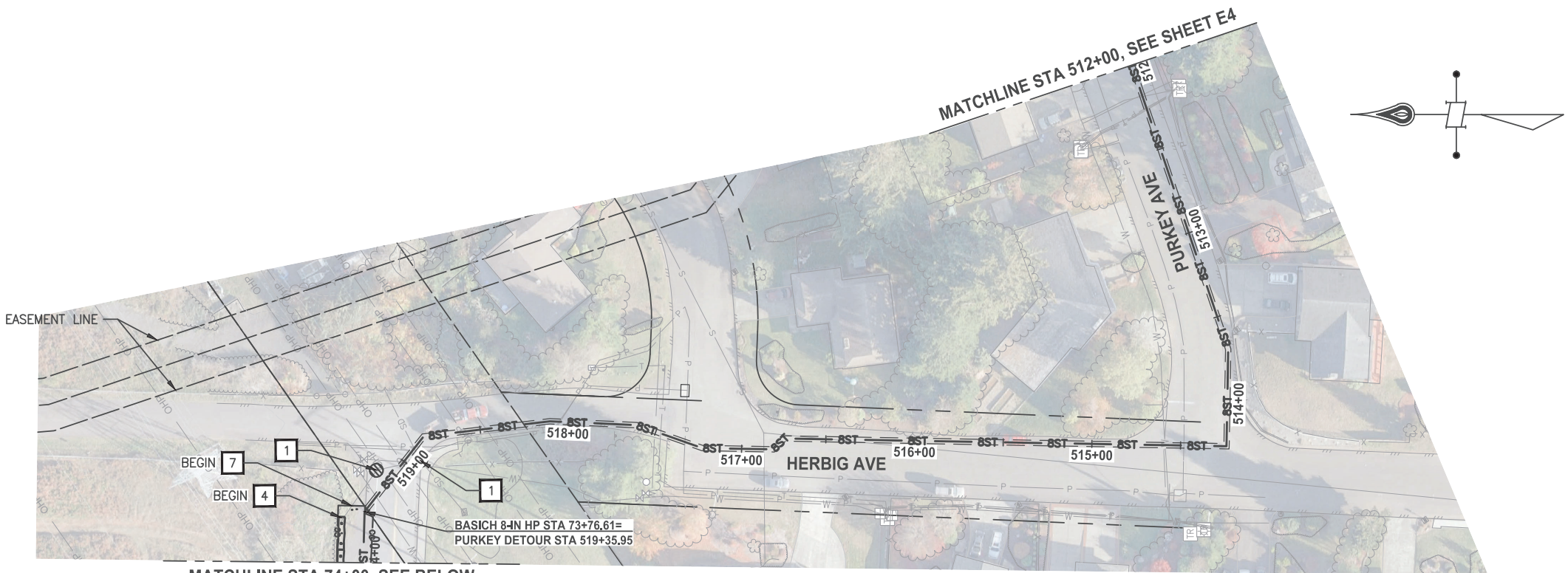
SEC. 4,5,6,7 TOWN. 17N RNG. 9W

E4

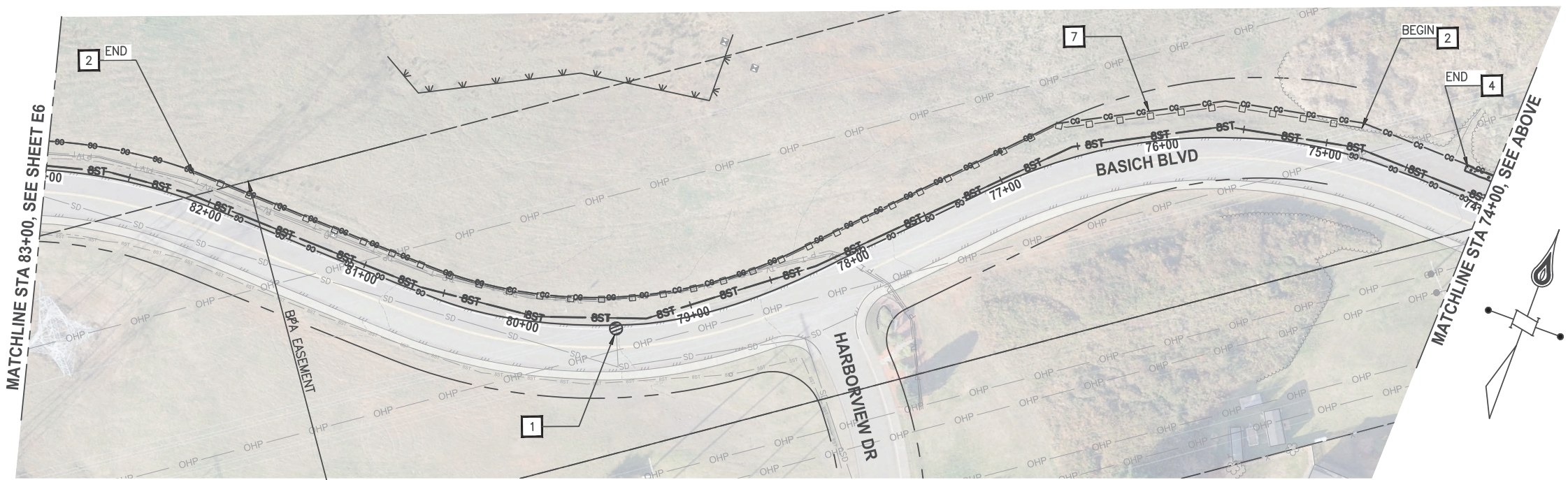
28 OF 41

NO	REVISION	BY	DATE

SEC. 5 TOWN. 17N. RNG. 9W. W.M.



MATCHLINE STA 74+00, SEE BELOW



NOTES:

- 1 STORM DRAIN INLET PROTECTION PER WSDOT STD PLAN 1-40.20-00.
- 2 SILT FENCE PER WSDOT STD PLAN 1-30.15-02.
- 3 HIGH VISIBILITY SILT FENCE PER WSDOT STD PLAN 1-30.17-01.
- 4 STRAW WATTLES PER WSDOT STD PLAN 1-30.30-02.
- 5 HORIZONTAL DIRECTIONAL DRILL STAGING AREA.
- 6 STABILIZED CONSTRUCTION ENTRANCE WITH 1-FT DEPTH PERMEABLE BALLAST PER SECTION 9-03.9(2) OF THE WSDOT STANDARD SPECIFICATIONS.
- 7 CLEARING AND GRUBBING PER WSDOT STANDARD SPECIFICATION 2-01.

LEGEND

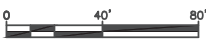
- STORM DRAIN INLET PROTECTION
- SILT FENCE
- HIGH VISIBILITY SILT FENCE
- STRAW WATTLE
- HORIZONTAL DIRECTIONAL DRILL STAGING AREA
- CLEARING LIMITS
- SAWCUT
- WETLAND
- STABILIZED CONSTRUCTION ENTRANCE

GENERAL NOTES:

1. CONTRACTOR TO PROVIDE CONTINGENCY PLAN AND EQUIPMENT TO PROTECT WETLAND FROM INADVERTANT DRILLING FLUID RELEASE. SEE SPECIFICATIONS FOR REQUIREMENTS.
2. RESTORE WETLAND BUFFER, SEE RESTORATION PLAN SHEET R1.
3. COORDINATE WITH PROPERTY OWNERS FOR PIPE LAYDOWN/PULLBACK SCHEDULE.
4. CONTRACTOR SHALL PROVIDE EMERGENCY ACCESS AVAILABILITY AT ALL TIMES.
5. SEDIMENT LADEN WATER SHALL NOT BE DISCHARGED INTO ANY SURFACE WATER OR STORMWATER CONVEYANCE.
6. STREETS SHALL BE KEPT CLEAN OF DIRT AND SEDIMENT. ROADWAY SHALL NOT BE FLUSHED WITH WATER.
7. CONTRACTOR TO PROVIDE A DEWATERING PLAN MEETING CLEAN WATER STANDARDS IN THE EVENT GROUND WATER IS ENCOUNTERED.

(HALF SCALE 11X17) (FULL SCALE 22X34)
HORZ: 1"=80' HORZ: 1"=40'
VERT: 1"=40' VERT: 1"=20'

CALL BEFORE YOU DIG:
UTILITIES UNDERGROUND
LOCATION CENTER
811



CONTRACTOR TO VERIFY SIZE, TYPE AND LOCATION OF EXISTING UTILITIES PRIOR TO CONSTRUCTION. NOTIFY PROJECT ENGINEER IMMEDIATELY IF CONFLICTS ARISE.

Parametrix
ENGINEERING · PLANNING · ENVIRONMENTAL SCIENCES
719 2ND AVENUE, SUITE 200 | SEATTLE, WA 98104
P 206.394.3700
WWW.PARAMETRIX.COM



CAD Tech: B. JOHNSON
CAD Review: M. RADVANY
Engineer: J. CHAVEZ, JR.
Design Review: R. CUSHMAN
Funding Project #: 286039
Work Order Number: 251913
Drawing No:

Scale: AS SHOWN
Grid #:
Date: MAR 2021

BASICH BLVD. 8" HIGH PRESSURE
PIPELINE PROJECT

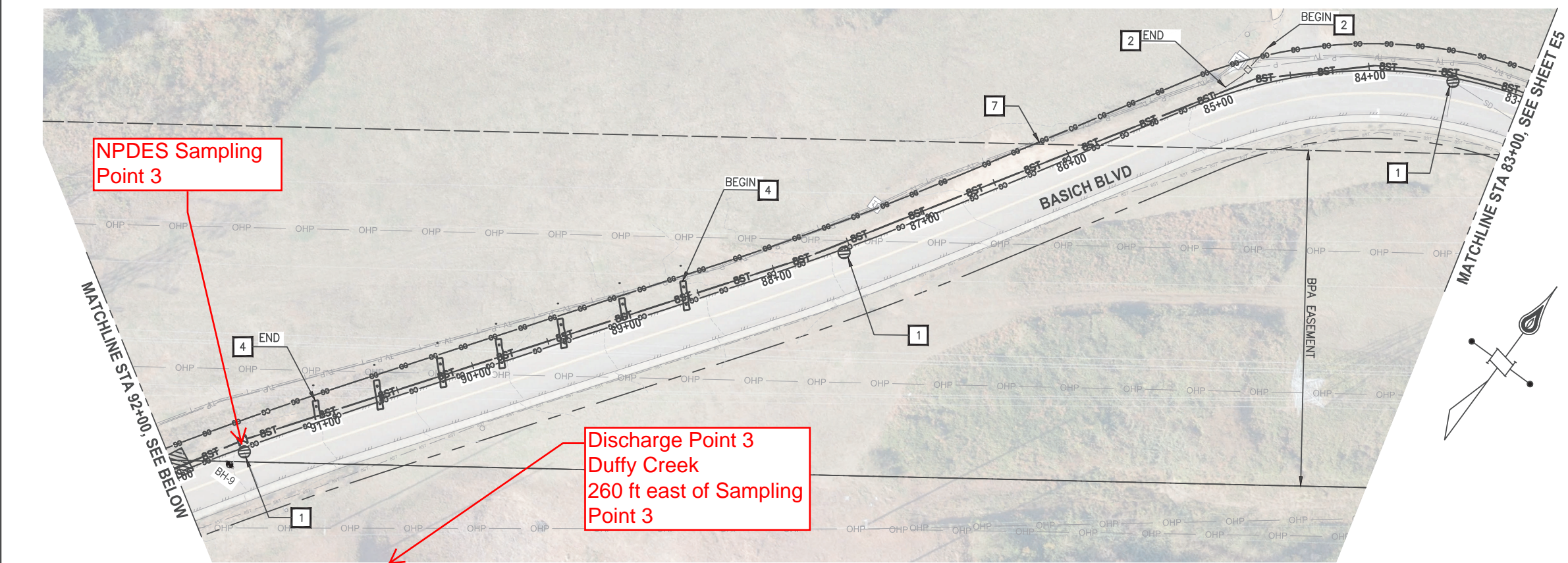
ABERDEEN, WA
GRAYS HARBOR COUNTY
ENVIRONMENTAL COMPLIANCE

SEC. 4,5,6,7 TOWN. 17N RNG. 9W

E5

29 OF 41

NO	REVISION	BY	DATE



NOTES:

- 1 STORM DRAIN INLET PROTECTION PER WSDOT STD PLAN I-40.20-00.
- 2 SILT FENCE PER WSDOT STD PLAN I-30.15-02.
- 3 HIGH VISIBILITY SILT FENCE PER WSDOT STD PLAN I-30.17-01.
- 4 STRAW WATTLES PER WSDOT STD PLAN I-30.30-02.
- 5 HORIZONTAL DIRECTIONAL DRILL STAGING AREA.
- 6 STABILIZED CONSTRUCTION ENTRANCE WITH 1-FT DEPTH PERMEABLE BALLAST PER SECTION 9-03.9(2) OF THE WSDOT STANDARD SPECIFICATIONS.
- 7 CLEARING AND GRUBBING PER WSDOT STANDARD SPECIFICATION 2-01.

LEGEND

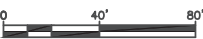
- STORM DRAIN INLET PROTECTION
- SILT FENCE
- x- HIGH VISIBILITY SILT FENCE
- ▬ STRAW WATTLE
- ▨ HORIZONTAL DIRECTIONAL DRILL STAGING AREA
- ∞- CLEARING LIMITS
- - SAWCUT
- WETLAND
- STABILIZED CONSTRUCTION ENTRANCE

GENERAL NOTES:

1. CONTRACTOR TO PROVIDE CONTINGENCY PLAN AND EQUIPMENT TO PROTECT WETLAND FROM INADVERTANT DRILLING FLUID RELEASE. SEE SPECIFICATIONS FOR REQUIREMENTS.
2. RESTORE WETLAND BUFFER, SEE RESTORATION PLAN SHEET R1.
3. COORDINATE WITH PROPERTY OWNERS FOR PIPE LAYDOWN/PULLBACK SCHEDULE.
4. CONTRACTOR SHALL PROVIDE EMERGENCY ACCESS AVAILABILITY AT ALL TIMES.
5. SEDIMENT LADEN WATER SHALL NOT BE DISCHARGED INTO ANY SURFACE WATER OR STORMWATER CONVEYANCE.
6. STREETS SHALL BE KEPT CLEAN OF DIRT AND SEDIMENT. ROADWAY SHALL NOT BE FLUSHED WITH WATER.
7. CONTRACTOR TO PROVIDE A DEWATERING PLAN MEETING CLEAN WATER STANDARDS IN THE EVENT GROUND WATER IS ENCOUNTERED.

(HALF SCALE 11X17) (FULL SCALE 22X34)
HORZ: 1"=80' HORZ: 1"=40'
VERT: 1"=40' VERT: 1"=20'

CALL BEFORE YOU DIG:
UTILITIES UNDERGROUND
LOCATION CENTER
811



CONTRACTOR TO VERIFY SIZE, TYPE AND LOCATION OF EXISTING UTILITIES PRIOR TO CONSTRUCTION. NOTIFY PROJECT ENGINEER IMMEDIATELY IF CONFLICTS ARISE.

Parametrix
ENGINEERING · PLANNING · ENVIRONMENTAL SCIENCES
719 2ND AVENUE, SUITE 200 | SEATTLE, WA 98104
P 206.394.3700
WWW.PARAMETRIX.COM



CAD Tech: B. JOHNSON
CAD Review: M. RADVANY
Engineer: J. CHAVEZ, JR.
Design Review: R. CUSHMAN
Funding Project #: 286039
Work Order Number: 251913
Drawing No:

Scale: AS SHOWN
Grid #:
Date: MAR 2021

BASICH BLVD. 8" HIGH PRESSURE
PIPELINE PROJECT

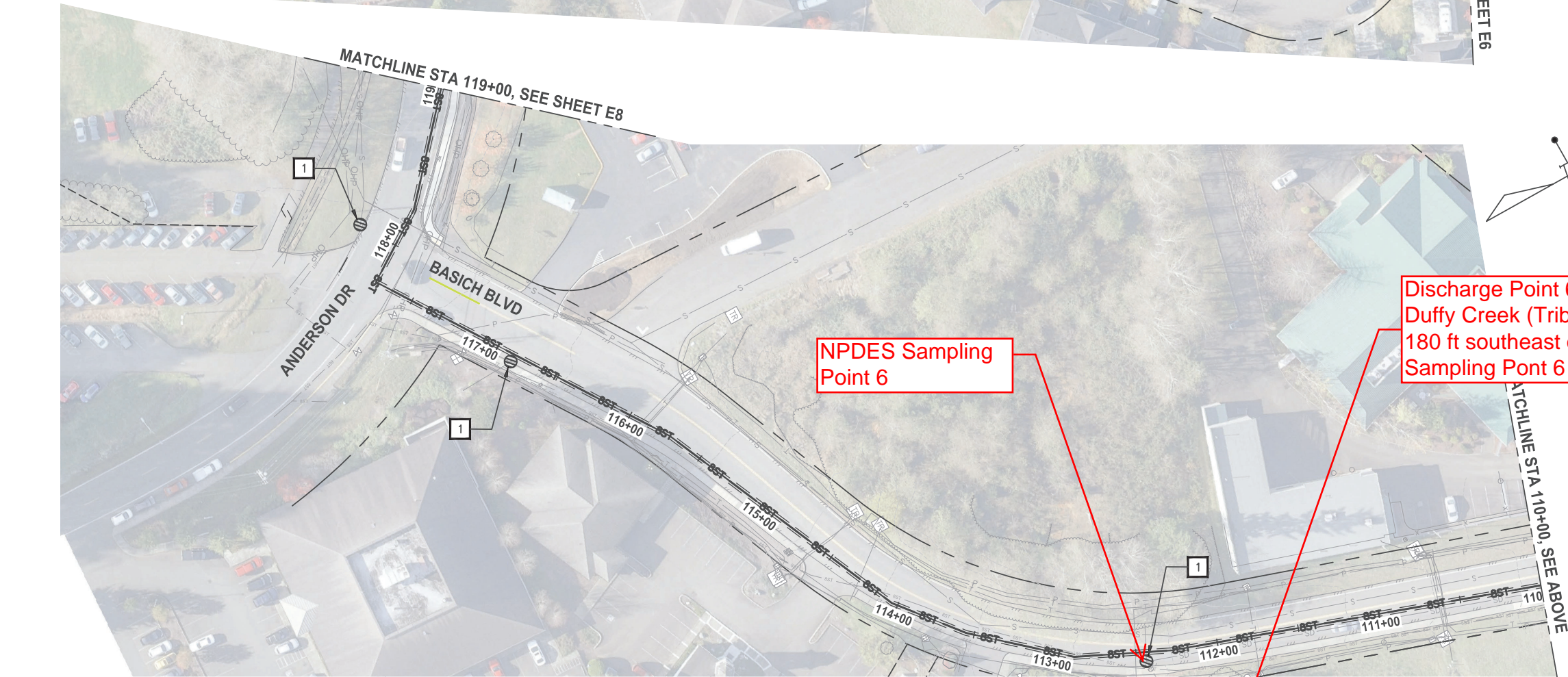
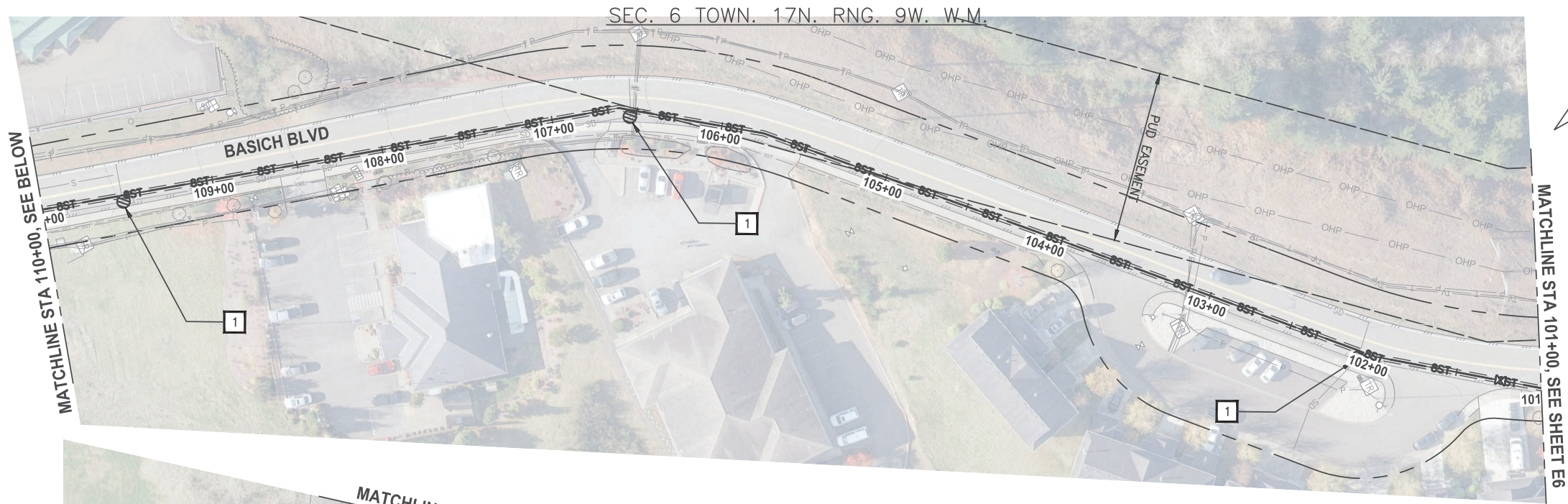
ABERDEEN, WA
GRAYS HARBOR COUNTY
ENVIRONMENTAL COMPLIANCE

SEC. 4,5,6,7 TOWN. 17N RNG. 9W

E6

30 OF 41

NO	REVISION	BY	DATE



NOTES:

- 1 STORM DRAIN INLET PROTECTION PER WSDOT STD PLAN I-40.20-00.
- 2 SILT FENCE PER WSDOT STD PLAN I-30.15-02.
- 3 HIGH VISIBILITY SILT FENCE PER WSDOT STD PLAN I-30.17-01.
- 4 STRAW WATTLES PER WSDOT STD PLAN I-30.30-02.
- 5 HORIZONTAL DIRECTIONAL DRILL STAGING AREA.
- 6 STABILIZED CONSTRUCTION ENTRANCE WITH 1-FT DEPTH PERMEABLE BALLAST PER SECTION 9-03.9(2) OF THE WSDOT STANDARD SPECIFICATIONS.
- 7 CLEARING AND GRUBBING PER WSDOT STANDARD SPECIFICATION 2-01.

LEGEND

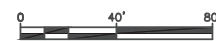
- STORM DRAIN INLET PROTECTION
- SILT FENCE
- HIGH VISIBILITY SILT FENCE
- STRAW WATTLE
- HORIZONTAL DIRECTIONAL DRILL STAGING AREA
- CLEARING LIMITS
- SAWCUT
- WETLAND
- STABILIZED CONSTRUCTION ENTRANCE

GENERAL NOTES:

- 1. CONTRACTOR TO PROVIDE CONTINGENCY PLAN AND EQUIPMENT TO PROTECT WETLAND FROM INADVERTANT DRILLING FLUID RELEASE. SEE SPECIFICATIONS FOR REQUIREMENTS.
- 2. RESTORE WETLAND BUFFER, SEE RESTORATION PLAN SHEET R1.
- 3. COORDINATE WITH PROPERTY OWNERS FOR PIPE LAYDOWN/PULLBACK SCHEDULE.
- 4. CONTRACTOR SHALL PROVIDE EMERGENCY ACCESS AVAILABILITY AT ALL TIMES.
- 5. SEDIMENT LADEN WATER SHALL NOT BE DISCHARGED INTO ANY SURFACE WATER OR STORMWATER CONVEYANCE.
- 6. STREETS SHALL BE KEPT CLEAN OF DIRT AND SEDIMENT. ROADWAY SHALL NOT BE FLUSHED WITH WATER.
- 7. CONTRACTOR TO PROVIDE A DEWATERING PLAN MEETING CLEAN WATER STANDARDS IN THE EVENT GROUND WATER IS ENCOUNTERED.

(HALF SCALE 11X17) (FULL SCALE 22X34)
HORZ: 1"=80' HORZ: 1"=40'
VERT: 1"=40' VERT: 1"=20'

CALL BEFORE YOU DIG:
UTILITIES UNDERGROUND
LOCATION CENTER
811



CONTRACTOR TO VERIFY SIZE, TYPE AND LOCATION OF EXISTING UTILITIES PRIOR TO CONSTRUCTION. NOTIFY PROJECT ENGINEER IMMEDIATELY IF CONFLICTS ARISE.

Parametrix
ENGINEERING · PLANNING · ENVIRONMENTAL SCIENCES
719 2ND AVENUE, SUITE 200 | SEATTLE, WA 98104
P 206.394.3700
WWW.PARAMETRIX.COM



CAD Tech: B. JOHNSON
CAD Review: M. RADVANY
Engineer: J. CHAVEZ, JR.
Design Review: R. CUSHMAN
Funding Project #: 286039
Work Order Number: 251913
Drawing No:

Scale: AS SHOWN
Grid #:
Date: MAR 2021

BASICH BLVD. 8" HIGH PRESSURE
PIPELINE PROJECT

ABERDEEN, WA
GRAYS HARBOR COUNTY
ENVIRONMENTAL COMPLIANCE

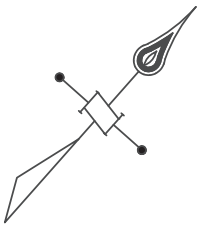
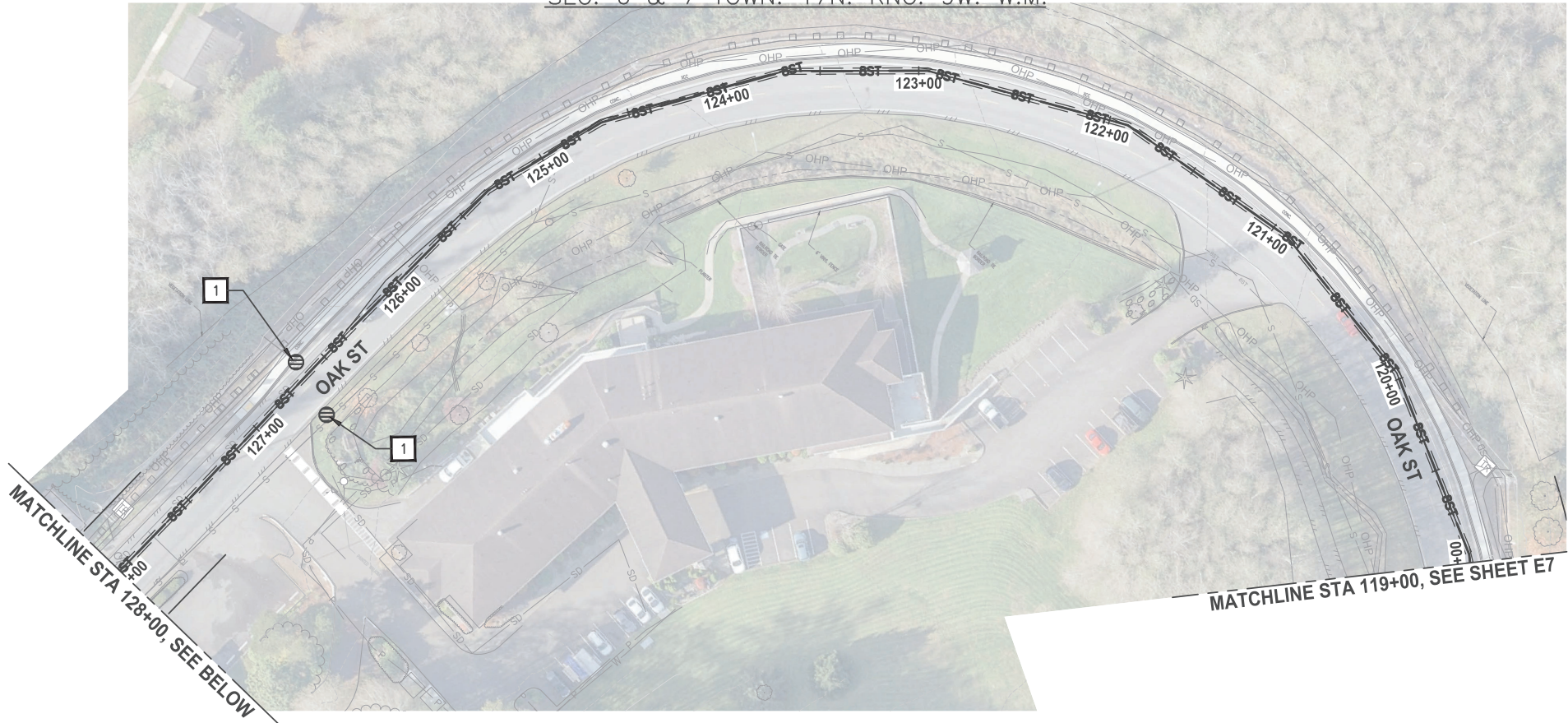
SEC. 4,5,6,7 TOWN. 17N RING. 9W

E7

31 OF 41

NO	REVISION	BY	DATE

SEC. 6 & 7 TOWN. 17N. RNG. 9W. W.M.



NOTES:

- 1 STORM DRAIN INLET PROTECTION PER WSDOT STD PLAN I-40.20-00.
- 2 SILT FENCE PER WSDOT STD PLAN I-30.15-02.
- 3 HIGH VISIBILITY SILT FENCE PER WSDOT STD PLAN I-30.17-01.
- 4 STRAW WATTLES PER WSDOT STD PLAN I-30.30-02.
- 5 HORIZONTAL DIRECTIONAL DRILL STAGING AREA.
- 6 STABILIZED CONSTRUCTION ENTRANCE WITH 1-FT DEPTH PERMEABLE BALLAST PER SECTION 9-03.9(2) OF THE WSDOT STANDARD SPECIFICATIONS.
- 7 CLEARING AND GRUBBING PER WSDOT STANDARD SPECIFICATION 2-01.

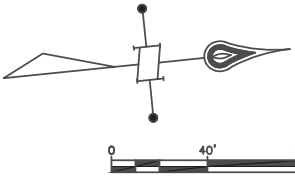
LEGEND

- STORM DRAIN INLET PROTECTION
- SILT FENCE
- x HIGH VISIBILITY SILT FENCE
- ▭ STRAW WATTLE
- ▨ HORIZONTAL DIRECTIONAL DRILL STAGING AREA
- - - CLEARING LIMITS
- SAWCUT
- ~ WETLAND
- ▭ STABILIZED CONSTRUCTION ENTRANCE

GENERAL NOTES:

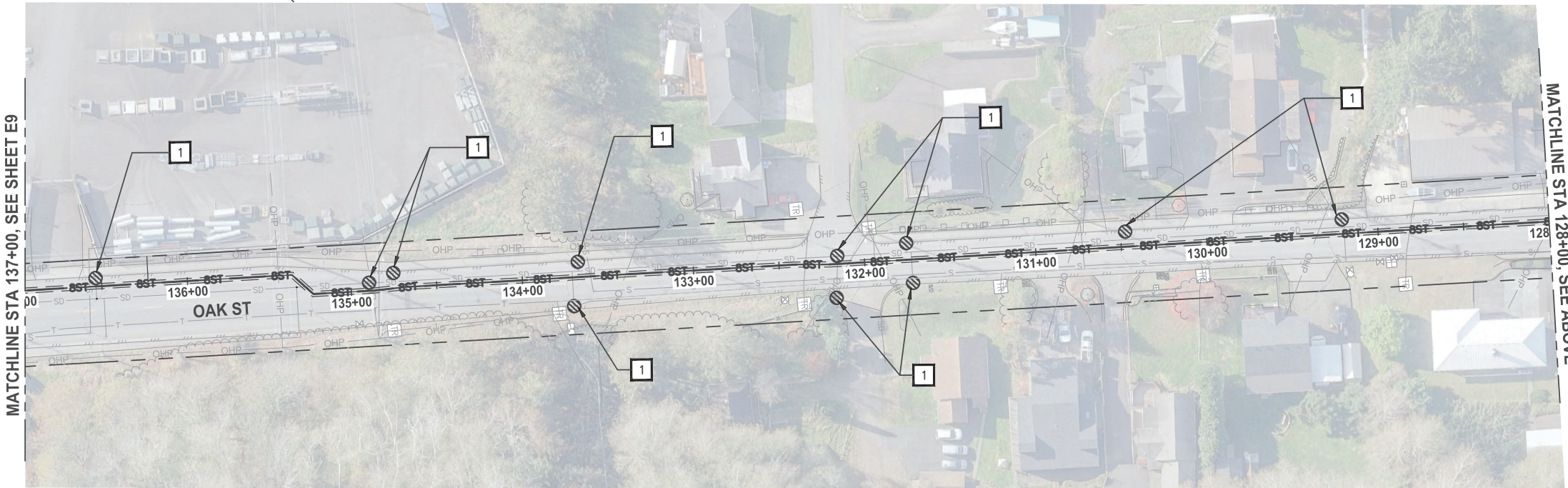
1. CONTRACTOR TO PROVIDE CONTINGENCY PLAN AND EQUIPMENT TO PROTECT WETLAND FROM INADVERTANT DRILLING FLUID RELEASE. SEE SPECIFICATIONS FOR REQUIREMENTS.
2. RESTORE WETLAND BUFFER, SEE RESTORATION PLAN SHEET R1.
3. COORDINATE WITH PROPERTY OWNERS FOR PIPE LAYDOWN/PULLBACK SCHEDULE.
4. CONTRACTOR SHALL PROVIDE EMERGENCY ACCESS AVAILABILITY AT ALL TIMES.
5. SEDIMENT LADEN WATER SHALL NOT BE DISCHARGED INTO ANY SURFACE WATER OR STORMWATER CONVEYANCE.
6. STREETS SHALL BE KEPT CLEAN OF DIRT AND SEDIMENT. ROADWAY SHALL NOT BE FLUSHED WITH WATER.
7. CONTRACTOR TO PROVIDE A DEWATERING PLAN MEETING CLEAN WATER STANDARDS IN THE EVENT GROUND WATER IS ENCOUNTERED.

(HALF SCALE 11X17) (FULL SCALE 22X34)
HORZ: 1"=80' HORZ: 1"=40'
VERT: 1"=40' VERT: 1"=20'



CALL BEFORE YOU DIG:
UTILITIES UNDERGROUND
LOCATION CENTER
811

CONTRACTOR TO VERIFY SIZE, TYPE AND LOCATION OF EXISTING UTILITIES PRIOR TO CONSTRUCTION. NOTIFY PROJECT ENGINEER IMMEDIATELY IF CONFLICTS ARISE.



Parametrix
ENGINEERING · PLANNING · ENVIRONMENTAL SCIENCES
719 2ND AVENUE, SUITE 200 | SEATTLE, WA 98104
P 206.394.3700
WWW.PARAMETRIX.COM



CAD Tech: B. JOHNSON
CAD Review: M. RADVANY
Engineer: J. CHAVEZ, JR.
Design Review: R. CUSHMAN
Funding Project #: 286039
Work Order Number: 251913
Drawing No:

Scale: AS SHOWN
Grid #:
Date: MAR 2021

BASICH BLVD. 8" HIGH PRESSURE
PIPELINE PROJECT

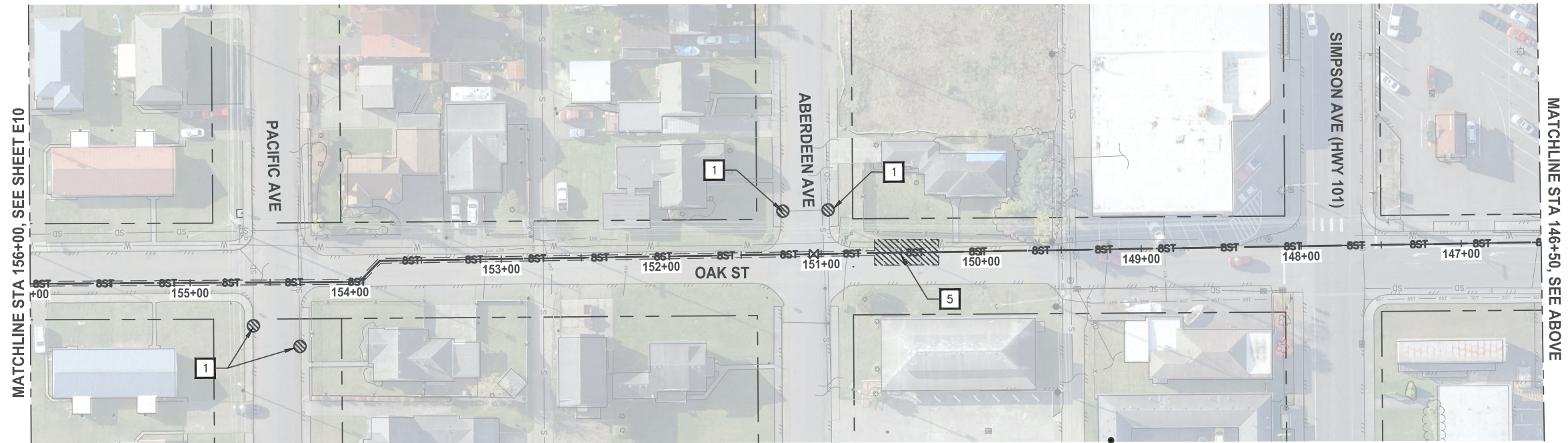
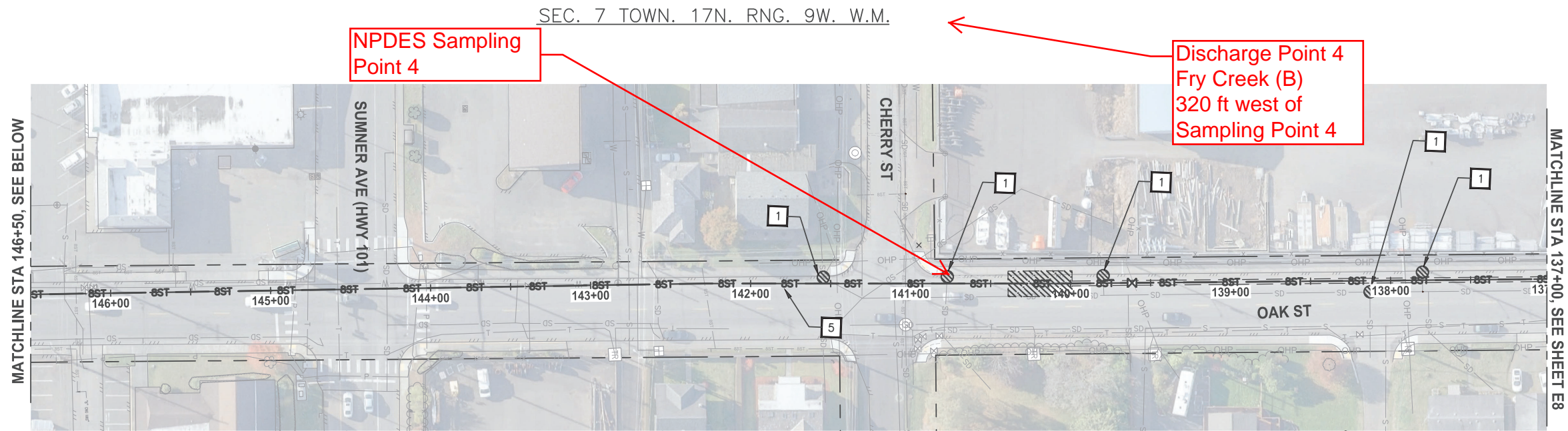
ABERDEEN, WA
GRAYS HARBOR COUNTY
ENVIRONMENTAL COMPLIANCE

SEC. 4,5,6,7 TOWN. 17N RNG. 9W

E8

32 OF 41

NO	REVISION	BY	DATE



NOTES:

- 1 STORM DRAIN INLET PROTECTION PER WSDOT STD PLAN I-40.20-00.
- 2 SILT FENCE PER WSDOT STD PLAN I-30.15-02.
- 3 HIGH VISIBILITY SILT FENCE PER WSDOT STD PLAN I-30.17-01.
- 4 STRAW WATTLES PER WSDOT STD PLAN I-30.30-02.
- 5 HORIZONTAL DIRECTIONAL DRILL STAGING AREA.
- 6 STABILIZED CONSTRUCTION ENTRANCE WITH 1-FT DEPTH PERMEABLE BALLAST PER SECTION 9-03.9(2) OF THE WSDOT STANDARD SPECIFICATIONS.
- 7 CLEARING AND GRUBBING PER WSDOT STANDARD SPECIFICATION 2-01.

LEGEND

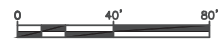
- STORM DRAIN INLET PROTECTION
- SILT FENCE
- HIGH VISIBILITY SILT FENCE
- STRAW WATTLE
- HORIZONTAL DIRECTIONAL DRILL STAGING AREA
- CLEARING LIMITS
- SAWCUT
- WETLAND
- STABILIZED CONSTRUCTION ENTRANCE

GENERAL NOTES:

1. CONTRACTOR TO PROVIDE CONTINGENCY PLAN AND EQUIPMENT TO PROTECT WETLAND FROM INADVERTANT DRILLING FLUID RELEASE. SEE SPECIFICATIONS FOR REQUIREMENTS.
2. RESTORE WETLAND BUFFER, SEE RESTORATION PLAN SHEET R1.
3. COORDINATE WITH PROPERTY OWNERS FOR PIPE LAYDOWN/PULLBACK SCHEDULE.
4. CONTRACTOR SHALL PROVIDE EMERGENCY ACCESS AVAILABILITY AT ALL TIMES.
5. SEDIMENT LADEN WATER SHALL NOT BE DISCHARGED INTO ANY SURFACE WATER OR STORMWATER CONVEYANCE.
6. STREETS SHALL BE KEPT CLEAN OF DIRT AND SEDIMENT. ROADWAY SHALL NOT BE FLUSHED WITH WATER.
7. CONTRACTOR TO PROVIDE A DEWATERING PLAN MEETING CLEAN WATER STANDARDS IN THE EVENT GROUND WATER IS ENCOUNTERED.

(HALF SCALE 11X17) (FULL SCALE 22X34)
HORZ: 1"=80' HORZ: 1"=40'
VERT: 1"=40' VERT: 1"=20'

CALL BEFORE YOU DIG:
UTILITIES UNDERGROUND
LOCATION CENTER
811



CONTRACTOR TO VERIFY SIZE, TYPE AND LOCATION OF EXISTING UTILITIES PRIOR TO CONSTRUCTION. NOTIFY PROJECT ENGINEER IMMEDIATELY IF CONFLICTS ARISE.

Parametrix
ENGINEERING · PLANNING · ENVIRONMENTAL SCIENCES
719 2ND AVENUE, SUITE 200 | SEATTLE, WA 98104
P 206.394.3700
WWW.PARAMETRIX.COM

CASCADE NATURAL GAS
CORPORATION
A Subsidiary of MDU Resources Group, Inc.
In the Community to Serve™

REBECCA S. CUSHMAN
REGISTERED PROFESSIONAL ENGINEER
DRAFT

CAD Tech: B. JOHNSON
CAD Review: M. RADVANY
Engineer: J. CHAVEZ, JR.
Design Review: R. CUSHMAN
Funding Project #: 286039
Work Order Number: 251913
Drawing No:

Scale: AS SHOWN
Grid #:
Date: MAR 2021

BASICH BLVD. 8" HIGH PRESSURE
PIPELINE PROJECT
ABERDEEN, WA
GRAYS HARBOR COUNTY
ENVIRONMENTAL COMPLIANCE
SEC. 4,5,6,7 TOWN. 17N RNG. 9W

E9

33 OF 41



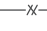






NO	REVISION	BY	DATE

SEC. 7 TOWN. 17N. RNG. 9W. W.M.

NOTES:

- 1
- STORM DRAIN INLET PROTECTION PER WSDOT STD PLAN I-40.20-00.
- 2
- SILT FENCE PER WSDOT STD PLAN I-30.15-02.
- 3
- HIGH VISIBILITY SILT FENCE PER WSDOT STD PLAN I-30.17-01.
- 4
- STRAW WATTLES PER WSDOT STD PLAN I-30.30-02.
- 5
- HORIZONTAL DIRECTIONAL DRILL STAGING AREA.
- 6
- STABILIZED CONSTRUCTION ENTRANCE WITH 1-FT DEPTH PERMEABLE BALLAST PER SECTION 9-03.9(2) OF THE WSDOT STANDARD SPECIFICATIONS.
- 7
- CLEARING AND GRUBBING PER WSDOT STANDARD SPECIFICATION 2-01.

LEGEND

-  STORM DRAIN INLET PROTECTION
-  SILT FENCE
-  HIGH VISIBILITY SILT FENCE
-  STRAW WATTLE
-  HORIZONTAL DIRECTIONAL DRILL STAGING AREA
-  CLEARING LIMITS
-  SAWCUT
-  WETLAND
-  STABILIZED CONSTRUCTION ENTRANCE

GENERAL NOTES:

1.
- CONTRACTOR TO PROVIDE CONTINGENCY PLAN AND EQUIPMENT TO PROTECT WETLAND FROM INADVERTANT DRILLING FLUID RELEASE. SEE SPECIFICATIONS FOR REQUIREMENTS.
2.
- RESTORE WETLAND BUFFER, SEE RESTORATION PLAN SHEET R1.
3.
- COORDINATE WITH PROPERTY OWNERS FOR PIPE LAYDOWN/PULLBACK SCHEDULE.
4.
- CONTRACTOR SHALL PROVIDE EMERGENCY ACCESS AVAILABILITY AT ALL TIMES.
5.
- SEDIMENT LADEN WATER SHALL NOT BE DISCHARGED INTO ANY SURFACE WATER OR STORMWATER CONVEYANCE.
6.
- STREETS SHALL BE KEPT CLEAN OF DIRT AND SEDIMENT. ROADWAY SHALL NOT BE FLUSHED WITH WATER.
7.
- CONTRACTOR TO PROVIDE A DEWATERING PLAN MEETING CLEAN WATER STANDARDS IN THE EVENT GROUND WATER IS ENCOUNTERED.

(HALF SCALE 11X17)

(FULL SCALE 22X34)

HORZ: 1"=80'

HORZ: 1"=40'

VERT: 1"=40'

VERT: 1"=20'

CALL BEFORE YOU DIG:
UTILITIES UNDERGROUND
LOCATION CENTER
811

CONTRACTOR TO VERIFY SIZE, TYPE AND
LOCATION OF EXISTING UTILITIES PRIOR TO
CONSTRUCTION. NOTIFY PROJECT ENGINEER
IMMEDIATELY IF CONFLICTS ARISE.

Discharge Point 2
Fry Creek (A)
560 ft west of
Sampling Point 2

NPDES Sampling
Point 2

MATCHLINE STA 201+50, SEE BELOW

MATCHLINE STA 201+50, SEE ABOVE

INSTALL TEMPORARY CHAIN LINK SECURITY FENCE
AROUND WORK AREA ON PARK PROPERTY.

25 LF

Parametrix

ENGINEERING · PLANNING · ENVIRONMENTAL SCIENCES

719 2ND AVENUE, SUITE 200 | SEATTLE, WA 98104
P 206.394.3700
WWW.PARAMETRIX.COM



In the Community to Serve®



CAD Tech: B. JOHNSON
CAD Review: M. RADVANY
Engineer: J. CHAVEZ, JR.
Design Review: R. CUSHMAN
Funding Project #: 286039
Work Order Number: 251913
Drawing No:

Scale: AS SHOWN
Grid #:
Date: MAR 2021

BASICH BLVD. 8" HIGH PRESSURE
PIPELINE PROJECT

ABERDEEN, WA
GRAYS HARBOR COUNTY
ENVIRONMENTAL COMPLIANCE

SEC. 4,5,6,7 TOWN. 17N RNG. 9W

E10

34 OF 41

NO	REVISION	BY	DATE