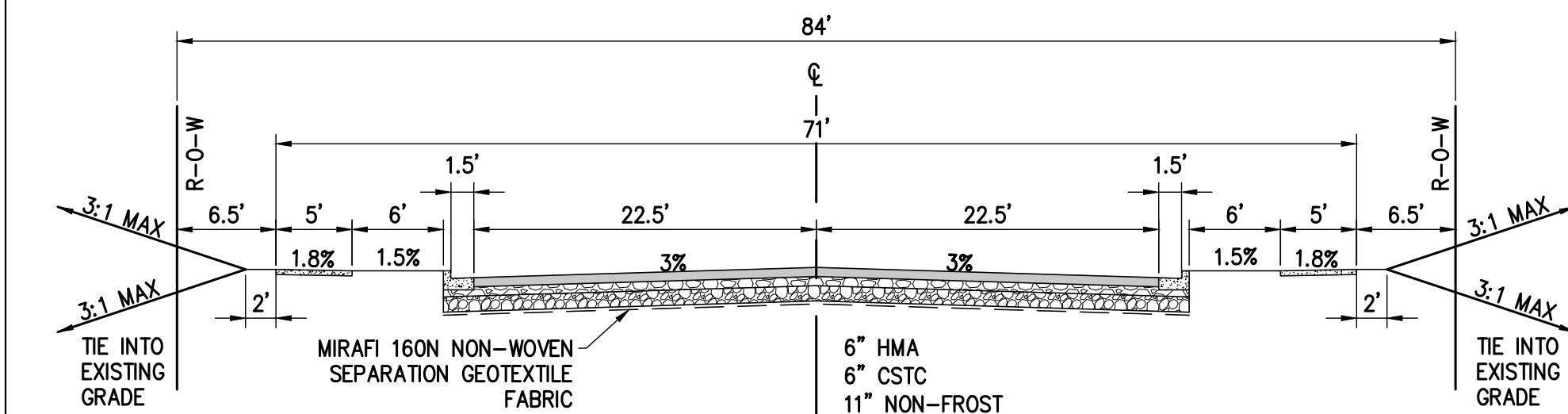


21ST AVENUE AND FLINT ROAD INTERSECTION DETAIL

SCALE: 1" = 20'

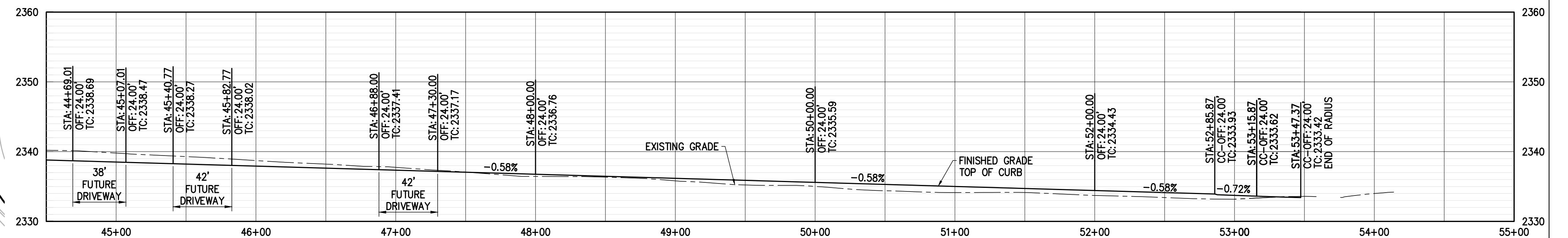
REFERENCE NOTES APPLY TO ALL STREET PLAN SHEETS.
NOT ALL REFERENCE NOTES WILL BE FOUND ON THIS SHEET.
REFERENCE NOTES:

- 1 PROVIDE NEW ASPHALT ROAD PER TYPICAL ROAD SECTION AND PER CITY OF SPOKANE STANDARD PLAN W-101A ARTERIAL STREET SECTION.
- 2 PROVIDE NEW CONCRETE CURB AND GUTTER PER CITY OF SPOKANE STANDARD PLAN F-106.
- 3 PROVIDE NEW CONCRETE SIDEWALK PER CITY OF SPOKANE STANDARD PLAN F-102 (WIDTH PER ROAD SECTION BELOW).
- 4 PROVIDE NEW CONCRETE CURB DROP INLET AND SWALE DRAIN PAD PER CITY OF SPOKANE STANDARD PLANS F-109 AND F-110.
- 5 CONTRACTOR TO MATCH EXISTING FINISHED SURFACE ELEVATIONS.
- 6 PROVIDE NEW TYPE 1 CURB RAMP PER CITY OF SPOKANE STANDARD PLAN F-105.
- 7 PROVIDE NEW TYPE 2 CURB INLET PER SPOKANE COUNTY STANDARD PLAN B-9. MATCH SIDEWALK WIDTH.
- 8 PROVIDE POSITIVE DRAINAGE TOWARD DETENTION POND PER GRADES SHOWN.
- 9 REMOVE AND REPLACE EXISTING ASPHALT PAVEMENT FOR UTILITY CONNECTIONS PER THE INLAND NORTHWEST REGIONAL PAVEMENT CUT POLICY AND THE CITY OF SPOKANE STANDARDS. MATCH EXISTING PAVEMENT SECTION AND ELEVATIONS.
- 10 PROVIDE NEW TYPE 3 CURB RAMP PER CITY OF SPOKANE STANDARD PLAN F-105D.



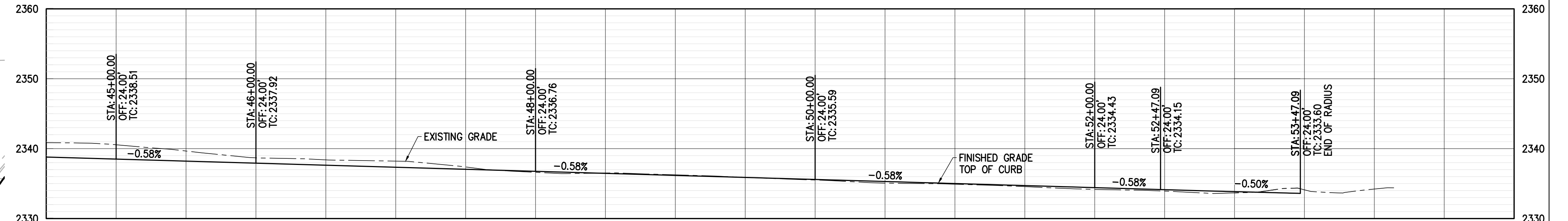
21ST AVENUE TYPICAL ROAD SECTION

SCALE: 1" = 10'



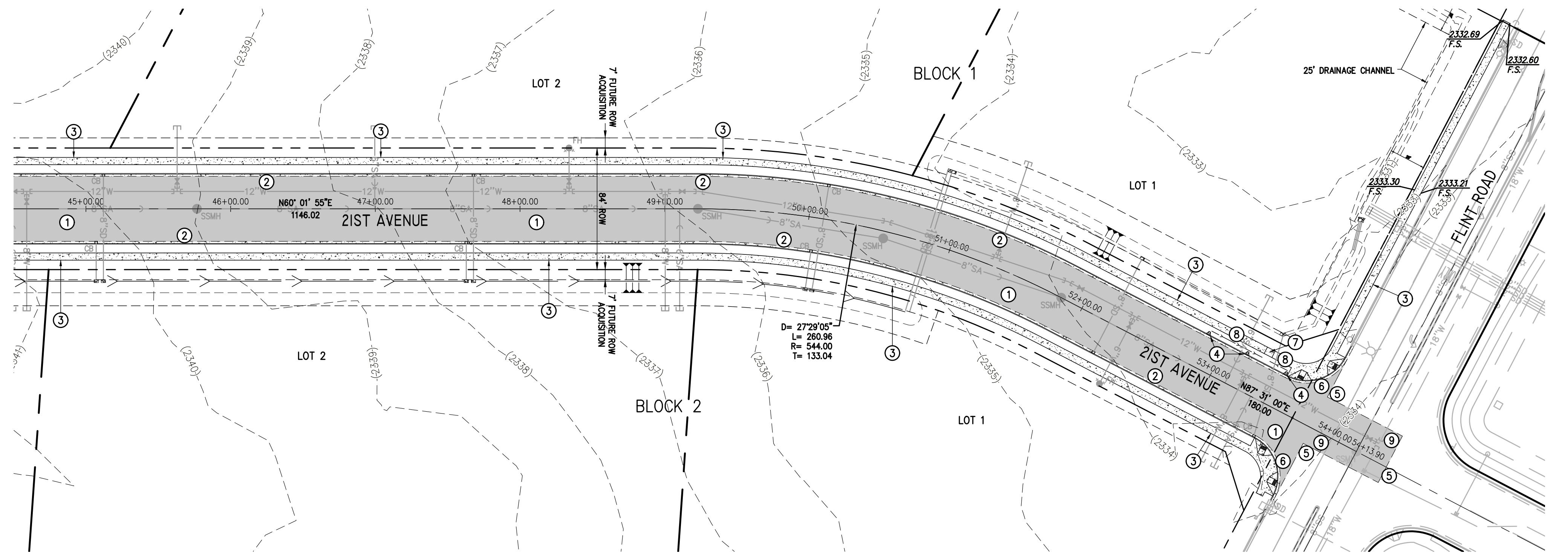
TOP OF CURB - LEFT (NORTH) PROFILE

SCALE: 1" = 50' (HORIZONTAL)
SCALE: 1" = 10' (VERTICAL)



TOP OF CURB - RIGHT (SOUTH) PROFILE

SCALE: 1" = 50' (HORIZONTAL)
SCALE: 1" = 10' (VERTICAL)



PLAN VIEW

SCALE: 1" = 50'

ENGINEER'S NOTES:

1. THE CENTERLINE PROFILE OF 21ST AVENUE HAS A 0.58% SLOPE ALONG THE ENTIRETY OF THE PHASE 1 DEVELOPMENT.
2. STREET TREES IN PLANTING STRIP ARE REQUIRED WHEN THE ADJACENT PARCELS ARE DEVELOPED.

CONTRACTOR NOTE

ALL EXISTING UTILITIES SHOWN ON PLANS ARE TO BE VERIFIED HORIZONTALLY AND VERTICALLY PRIOR TO ANY CONSTRUCTION. ALL EXISTING FEATURES INCLUDING BURIED UTILITIES ARE SHOWN AS INDICATED ON RECORD MAPS AND SURVEYS FURNISHED BY OTHERS. WE ASSUME NO LIABILITY FOR THE ACCURACY OF THOSE RECORDS AND SURVEYS. CONTACT THE UTILITY OWNER/AGENCY FOR THE FINAL LOCATION OF EXISTING UTILITIES IN AREAS CRITICAL TO CONSTRUCTION.



6/18

DATE	BY	PROJ	DESCRIPTION	DATE	BY	PROJ	E.F.N.	U.S.N.	FROM	TO	COUNCIL	FROM	TO	ORD. NO.	DATE	FILE NO.
7/19/21	DEM	1	DESIGN REVIEW COMMENTS DATE 6/1/21													
8/11/21	DEM	2	DESIGN REVIEW COMMENTS DATE 8/10/21													
9/15/21	DEM	3	DESIGN REVIEW COMMENTS DATE 9/8/21													
9/20/21	DEM	4	DESIGN REVIEW COMMENTS DATE 9/29/21													
11/22/21	DEM	5	STUB RELOCATIONS													
REVISIONS																
AS BUILT																
GRADE ORDINANCE LIST																

NAVDB8 = (OLD CMB ELEV.) - (13.13)	AS OF JANUARY, 2000 USE NORTH AMERICAN VERTICAL DATUM OF 1988 (NAVDB8)
BENCH MARK LOCATION	WSDOT MONUMENT ID 2694 (DESIGNATION GP32002-104) ALONG US 2
WSDOT BRASS DISK SET IN ROUND CONCRETE MONUMENT	
NAVDB8 ELEV. 2315.58	
BAR IS ONE INCH ON ORIGINAL DRAWING.	
IF NOT ONE INCH ON THIS SHEET, ADJUST SCALES ACCORDINGLY	
SCALE	

BY	DATES
DEM	4/13/21
REVISED	DEM 11/22/21
CHECKED	SSS 4/13/21
APPROVED	VMG 4/13/21

CITY OF SPOKANE, WASHINGTON
DEPARTMENT OF ENGINEERING SERVICES
808 WEST SPOKANE FALLS BLVD.
SPOKANE, WASHINGTON 99201-3343
(509) 625-6300

PROJECT NAME:	PACIFIC NORTHWEST TECHNOLOGY PARK - WEST PHASE 1	
SEGMENT LIMITS:	21ST AVENUE STA 45+00.00 TO 54+13.90	
PROJECT LIMITS:	LUCAS DRIVE TO FLINT ROAD	
TYPE OF IMPROVEMENT:	STREET	
CITY PROJECT NUMBER	2021534	CITY PLAN NUMBER
2021534		21ST V(04)1
30-25-42		

CALL BEFORE YOU DIG 456-8000