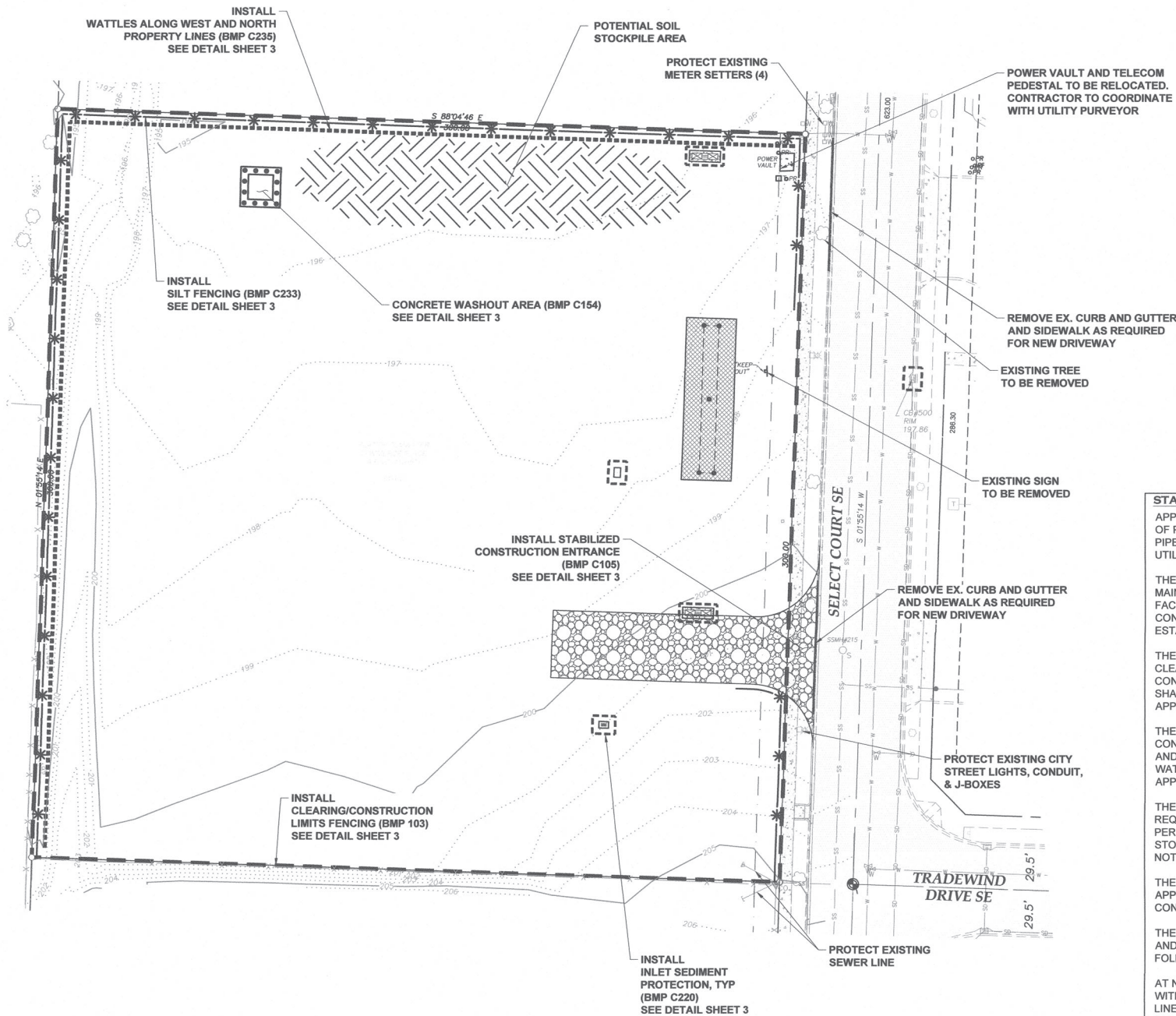


GENERAL EROSION CONTROL NOTES:

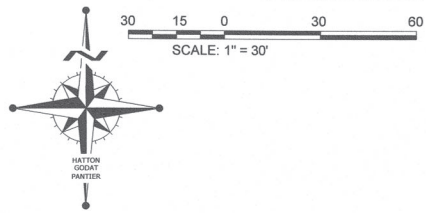
1. EROSION CONTROL MEASURES SHALL BE IN PLACE PRIOR TO THE BEGINNING OF CONSTRUCTION. THE PROJECT ENGINEER AND THE REVIEWING AGENCY SHALL INSPECT AND APPROVE THE INSTALLATION OF EROSION CONTROL MEASURES PRIOR TO BEGINNING CONSTRUCTION.
2. EROSION CONTROL MEASURES ARE NOT LIMITED TO THE ITEMS SHOWN ON THIS PLAN. THE CONTRACTOR SHALL BE RESPONSIBLE FOR THE INSTALLATION AND MAINTENANCE OF ALL EROSION CONTROL MEASURES. SILTATION OF EXISTING OR PROPOSED DRAINAGE FACILITIES SHALL NOT BE ALLOWED. CARE SHALL BE TAKEN TO PREVENT MIGRATION OF SILTS TO OFF SITE PROPERTIES.
3. THE CONTRACTOR SHALL MAKE DAILY SURVEILLANCE OF ALL EROSION CONTROL MEASURES AND MAKE ANY NECESSARY REPAIRS OR ADDITIONS TO THE EROSION CONTROL MEASURES AS REQUIRED. THE CONTRACTOR SHALL PROVIDE ADDITIONAL EROSION CONTROL MEASURES AS DETERMINED NECESSARY BY THE INSPECTOR OR PROJECT ENGINEER. FAILURE TO COMPLY WITH ALL LOCAL AND STATE EROSION CONTROL REQUIREMENTS MAY RESULT IN CIVIL PENALTIES BEING LEVIED AGAINST THE CONTRACTOR.
4. DURING THE WET SEASON, OCTOBER TO APRIL INCLUSIVE, ALL DISTURBED SOILS SHALL BE STABILIZED WITHIN 48 HOURS AFTER STOP OF WORK. EROSION CONTROL MEASURES SHALL INCLUDE, BUT ARE NOT LIMITED TO, COVERING THE AFFECTED AREA INCLUDING SPOIL PILES WITH PLASTIC SHEETING, STRAW MATTING, JUTE MATTING, STRAW MULCH, OR WOOD CHIPS. SEEDING OF THE DISTURBED AREAS SHALL TAKE PLACE AS WEATHER PERMITS.
5. ALL SEEDED OR SODDED AREAS SHALL BE CHECKED REGULARLY TO ENSURE VEGETATIVE COVERAGE IS COMPLETE. AREAS SHALL BE REPAIRED, RESEEDED, AND FERTILIZED AS REQUIRED.
6. TRACKING OF SOIL OFF SITE WILL NOT BE ALLOWED. IF SOIL IS TRACKED ON TO A PUBLIC STREET, IT SHALL BE REMOVED BY THE END OF THAT WORKING DAY. ANY FURTHER TRACKING OF MUD SHALL THEN BE PREVENTED BY SWEEPING OR WASHING OF THE VEHICLE'S TIRES BEFORE DRIVING ON A CITY STREET.
7. NO MORE THAN 300LF OF TRENCH SHALL BE OPENED AT ONE TIME.
8. EXCAVATED MATERIAL SHALL BE PLACED ON THE UPHILL SIDE OF TRENCHES.
9. TRENCH DEWATERING DEVICES SHALL BE DISCHARGED IN A MANNER THAT WILL NOT ADVERSELY AFFECT FLOWING STREAMS, DRAINAGE SYSTEMS, OR OFF SITE PROPERTIES.
10. ALL STORM SEWER INLETS RECEIVING RUNOFF FROM THE PROJECT DURING CONSTRUCTION SHALL BE PROTECTED SO THAT SEDIMENT-LADEN WATER WILL BE FILTERED BEFORE ENTERING THE CONVEYANCE SYSTEM.
11. ALL OFF SITE CATCH BASINS IMMEDIATELY ADJACENT TO THE SITE SHALL BE PROTECTED FROM SILTATION.
12. ALL DISTURBED AREAS SHALL BE SEEDED OR SODDED UPON COMPLETION OF WORK. THE CONTRACTOR SHALL BE RESPONSIBLE TO ENSURE THAT COMPLETE COVERAGE OF THE DISTURBED AREAS IS PROVIDED AND THAT GROWTH OF VEGETATION IS ESTABLISHED.

FILTER VAULT NOTES:

FILTER VAULTS SHALL BE IN BYPASS MODE UNTIL FINAL STABILIZATION OF THE SITE HAS BEEN ESTABLISHED.



CITY OF TUMWATER	
VERTICAL DATUM NGVD 29 THURSTON COUNTY HIGH PRECISION CONTROL NETWORK, CONTROL POINT NO. 1340, SURFACE MONUMENT 2\" BRASS DISC STAMPED WITH PUNCH MARK AND 28073, A THE CENTER OF CUL-DE-SAC, SELECT COURT, SE. NGVD 29 ELEVATION=210.98	MERIDIAN HORIZONTAL DATUM PLAT OF TUMWATER COMMERCE PLACE RECORDED UNDER AUDITOR'S FILE NUMBER 4159577.



LEGEND

- CLEARING LIMITS
- * SILT FENCE
- INLET SEDIMENT PROTECTION
- WATTLES

STANDARD SWPPP NOTES:

APPROVAL OF THIS CONSTRUCTION SWPPP DOES NOT CONSTITUTE AN APPROVAL OF PERMANENT ROAD OR DRAINAGE DESIGN (E.G., SIZE AND LOCATION OF ROADS, PIPES, RESTRICTORS, CHANNELS, RETENTION/DETENTION/INFILTRATION FACILITIES, UTILITIES, ETC.).

THE IMPLEMENTATION OF THIS CONSTRUCTION SWPPP AND THE CONSTRUCTION, MAINTENANCE, REPLACEMENT, AND UPGRADING OF THESE CONSTRUCTION SWPPP FACILITIES IS THE RESPONSIBILITY OF THE APPLICANT/CONTRACTOR UNTIL ALL CONSTRUCTION IS COMPLETED AND APPROVED AND VEGETATION/LANDSCAPING IS ESTABLISHED.

THE BOUNDARIES OF THE CLEARING LIMITS SHOWN ON THIS PLAN SHALL BE CLEARLY FLAGGED IN THE FIELD PRIOR TO CONSTRUCTION. DURING THE CONSTRUCTION PERIOD, NO DISTURBANCE BEYOND THE FLAGGED CLEARING LIMITS SHALL BE PERMITTED. THE FLAGGING SHALL BE MAINTAINED BY THE APPLICANT/CONTRACTOR FOR THE DURATION OF CONSTRUCTION.

THE CONSTRUCTION SWPPP FACILITIES SHOWN ON THIS PLAN MUST BE CONSTRUCTED IN CONJUNCTION WITH ALL CLEARING AND GRADING ACTIVITIES, AND IN SUCH A MANNER AS TO ENSURE THAT SEDIMENT AND SEDIMENT LADEN WATER DO NOT ENTER THE DRAINAGE SYSTEM, ROADWAYS, OR VIOLATE APPLICABLE WATER STANDARDS.

THE CONSTRUCTION SWPPP FACILITIES SHOWN ON THIS PLAN ARE THE MINIMUM REQUIREMENTS FOR ANTICIPATED SITE CONDITIONS. DURING THE CONSTRUCTION PERIOD, THESE ESC FACILITIES SHALL BE UPGRADED AS NEEDED FOR UNEXPECTED STORM EVENTS AND TO ENSURE THAT SEDIMENT AND SEDIMENT-LADEN WATER DO NOT LEAVE THE SITE.

THE CONSTRUCTION SWPPP FACILITIES SHALL BE INSPECTED DAILY BY THE APPLICANT/CONTRACTOR AND MAINTAINED AS NECESSARY TO ENSURE THEIR CONTINUED FUNCTIONING.

THE CONSTRUCTION SWPPP FACILITIES ON INACTIVE SITES SHALL BE INSPECTED AND MAINTAINED A MINIMUM OF ONCE A MONTH OR WITHIN THE 48 HOURS FOLLOWING A MAJOR STORM EVENT.

AT NO TIME SHALL MORE THAN 1 FOOT OF SEDIMENT BE ALLOWED TO ACCUMULATE WITHIN A CATCH BASIN TRAP (OR SUMP). ALL CATCH BASINS AND CONVEYANCE LINES SHALL BE CLEANED PRIOR TO PAVING. THE SEDIMENT CLEANING OPERATION SHALL NOT FLUSH SEDIMENT LADEN WATER INTO THE DOWNSTREAM SYSTEM.

STABILIZED CONSTRUCTION ENTRANCES SHALL BE INSTALLED AT THE BEGINNING OF CONSTRUCTION AND MAINTAINED FOR THE DURATION OF THE PROJECT. ADDITIONAL MEASURES MAY BE REQUIRED TO ENSURE THAT ALL PAVED AREAS ARE KEPT CLEAN FOR THE DURATION OF THE PROJECT.

CITY OF TUMWATER DRAINAGE DESIGN & EROSION CONTROL MANUAL
VOLUME II, APPENDIX 11-A
JANUARY 2018

THIS DRAWING DOES NOT REPRESENT A RECORD DOCUMENT, UNLESS CERTIFIED BY HATTON GODAT PANTIER.

ANY ALTERATIONS TO THE DESIGN SHOWN HEREON MUST BE REVIEWED AND APPROVED BY HATTON GODAT PANTIER.

CONSTRUCTION STAKING:

THIS PROJECT MUST BE STAKED PRIOR TO CONSTRUCTION BY THE DESIGN ENGINEER OR A LICENSED LAND SURVEYOR.

RECORD DOCUMENTS:

THE CONTRACTOR SHALL FURNISH HATTON GODAT PANTIER WITH A DRAWING(S) SHOWING THE CHANGES MADE TO THE DESIGN DRAWING(S).

THE CONTRACTOR SHALL BE FULLY RESPONSIBLE FOR THE LOCATION AND PROTECTION OF ALL EXISTING UTILITIES. THE CONTRACTOR SHALL VERIFY ALL UTILITY LOCATIONS PRIOR TO CONSTRUCTION BY CALLING THE UNDERGROUND LOCATE LINE AT 811 A MINIMUM OF 48 HOURS PRIOR TO ANY EXCAVATION.

DESIGNED BY: JTG
DRAWN BY: MUM
CHECKED BY: CPM
DATE: DECEMBER 2021
SCALE: 1" = 30'
H V N/A



HATTON GODAT PANTIER
ENGINEERS AND SURVEYORS
3910 MARTIN WAY E, SUITE B
OLYMPIA, WA 98506
TEL: 360.943.1599 FAX: 360.357.6299
hattonpantier.com

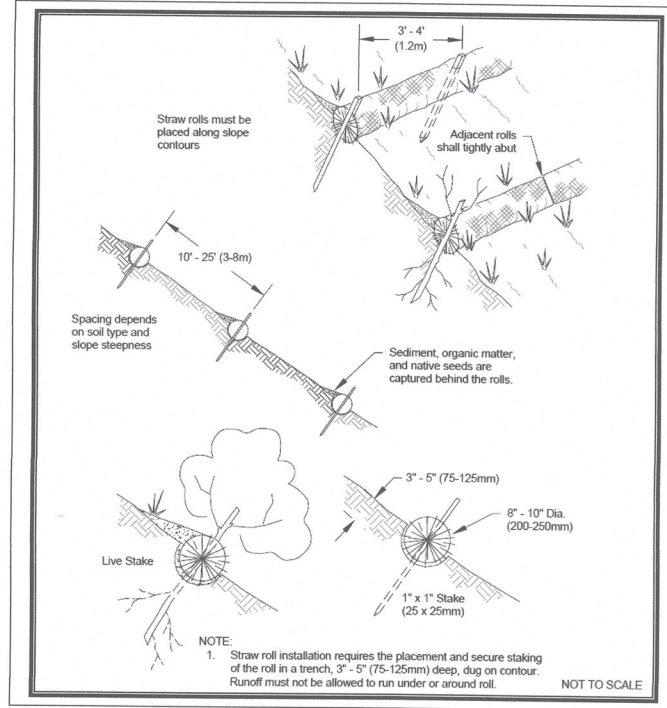
DATE: _____
REVISIONS: _____

OLYMPIA SHEET METAL
8947 SELECT CT SE, TUMWATER, WA 98512
**EROSION & SEDIMENT
CONTROL PLAN**

AGENCY NO. 20-1462
SHEET: 2 OF 14
H:\DGM\20-000\20-100\CDs
INDEX: 20-100 ec.dwg
JOB: 20-100

SCHEDULING NOTES: (BMP C162)

1. PROPER SCHEDULING OF A CONSTRUCTION PROJECT REDUCES THE AMOUNT AND DURATION OF SOIL EXPOSED TO EROSION FROM WIND, RAIN RUNOFF AND VEHICLE TRACKING.
2. SCHEDULING SHOULD AVOID RAINY PERIOD WHERE POSSIBLE.
3. SCHEDULE PROJECTS TO DISTURB SMALL PORTIONS OF THE SITE AT ANY ONE TIME.
4. COMPLETE GRADING AS SOON AS POSSIBLE
5. IMMEDIATELY STABILIZE DISTURBED PORTION BEFORE MOVING ON TO NEXT GRADING PORTION.



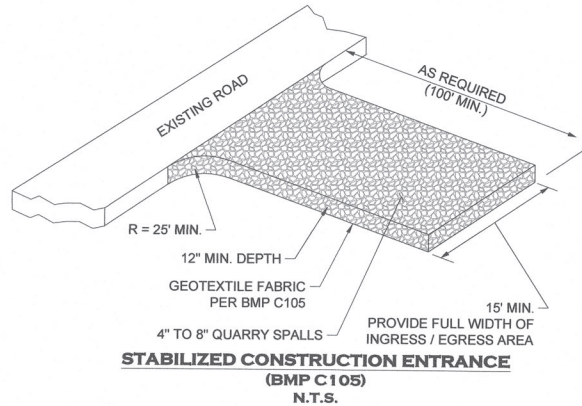
STRAW WATTLES DETAIL
(BMP C235)
N.T.S.

CONSTRUCTION SEQUENCE:

1. CONSTRUCTION ON THIS SITE SHALL BE CONDUCTED SUBSTANTIALLY IN ACCORDANCE WITH THE DIVISIONS DESCRIBED HEREON. DEVIATIONS FROM THESE DIVISIONS SHALL BE SUBMITTED TO THE PROJECT ENGINEER AND REVIEWING AGENCY. DEVIATIONS MUST BE APPROVED PRIOR TO ANY SITE DISTURBING ACTIVITY NOT CONTAINED WITHIN THE APPROVED PLANS.
2. FOR DEVELOPMENT OF THIS SITE, THE FOLLOWING GENERAL SEQUENCE SHALL BE OBSERVED:
 - A. INSTALL TREE PROTECTION/CLEARING LIMITS FENCING, FILTER FABRIC FENCE, AND CONSTRUCTION ENTRY AS SHOWN.
 - B. INSTALL INLET PROTECTION FOR EXISTING INLETS IN THE VICINITY OF AREAS TO BE DISTURBED.
 - C. CALL FOR INSPECTION BY THE REVIEWING AGENCY AND PROJECT ENGINEER.
 - D. CLEAR & GRUB AREAS WHICH ARE TO BE GRADED.
 - E. INSTALL TEMPORARY PIPING, EROSION CONTROL DITCHES, AND INFILTRATION BASINS/TEMPORARY SEDIMENT TRAPS.
 - F. GRADE AREAS TO SUBGRADE AS SPECIFIED.
 - G. INSTALL SITE IMPROVEMENTS IN ACCORDANCE WITH APPROVED PLANS.
 - H. INSTALL PERMANENT EROSION CONTROL MEASURES (I.E., HYDROSEEDING, PLANTINGS, ETC.)
3. ONCE THE SITE HAS BEEN DISTURBED, CONTINUE OPERATIONS DILIGENTLY TOWARD COMPLETION AND STABILIZATION OF THE SITE.
4. MONITOR ALL EROSION CONTROL FACILITIES, REPAIR, MODIFY, AND ENHANCE AS DIRECTED OR AS REQUIRED.

STOCKPILE NOTES:

1. STOCKPILES SHALL BE STABILIZED DAILY WITH PLASTIC COVERING OR OTHER APPROVED DEVICES BETWEEN OCTOBER 1 AND APRIL 30.
2. IN ANY SEASON SEDIMENT LEACHING FROM STOCKPILES MUST BE POSITIVELY PREVENTED.
3. TOPSOIL SHALL NOT BE PLACED WHILE IN A FROZEN OR MUDDY CONDITION, WHEN SUBGRADE IS DETRIMENTAL TO PROPER GRADING OR PROPOSED SODDING OR SEEDING.
4. PREVIOUSLY ESTABLISHED GRADES, IN THE AREAS TO RECEIVE TOPSOIL, SHALL BE MAINTAINED ACCORDING TO THE APPROVED PLANS.



STABILIZED CONSTRUCTION ENTRANCE NOTES: (BMP C105)

1. MATERIAL SHALL BE 4 INCH TO 8 INCH QUARRY SPALLS. (STATE STANDARD SPECIFICATIONS.)
2. THE ROCK PAD SHALL BE AT LEAST 12 INCHES THICK AND 100 FEET LONG. WIDTH SHALL BE THE FULL WIDTH OF THE VEHICLE INGRESS AND EGRESS AREA.
3. ADDITIONAL ROCK SHALL BE ADDED PERIODICALLY TO MAINTAIN PROPER FUNCTION OF THE PAD.
4. IF THE PAD DOES NOT ADEQUATELY REMOVE THE MUD FROM THE VEHICLE WHEELS, THE WHEELS SHALL BE HOSED OFF BEFORE THE VEHICLE ENTERS A PAVED STREET. THE WASHING SHALL BE DONE ON AN AREA COVERED WITH CRUSHED ROCK AND WASH WATER SHALL DRAIN TO A SEDIMENT RETENTION FACILITY OR THROUGH A SILT FENCE. IF THE CONSTRUCTION ENTRANCE FAILS TO REMOVE MUD FROM THE TIRES AND TRACK OUT IS OBSERVED, THE CITY WILL REQUIRE A WHEEL WASHING STATION TO BE INSTALLED.

FILL AREA STABILIZATION:

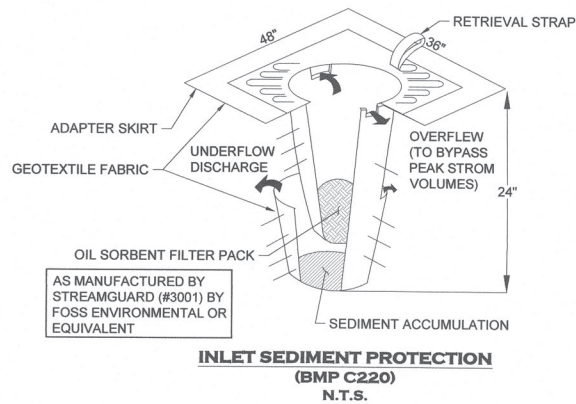
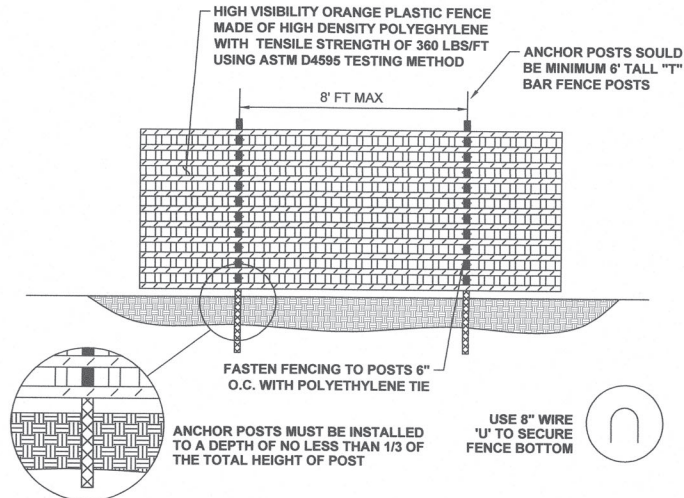
1. ALL FILL AREA SLOPES SHALL BE ROUGHENED USING ONE OF THE METHODS FROM BMP C130 AS FILL IS BEING PLACED.
2. ALL DISTURBED AREAS SHALL BE SEEDED AND MULCHED PER THE NOTES AND DETAILS IN THIS PLAN SET AND PER BMP'S C120 AND C121.
3. IN NO CASE SHALL DISTURBED SOILS REMAIN UNSTABILIZED AND UNWORKED FOR MORE THAN 7 DAYS DURING THE DRY SEASON (MAY 1 TO SEPTEMBER 30) OR MORE THAN 2 DAYS DURING THE WET SEASON (OCTOBER 1 TO APRIL 30)

EROSION CONTROL SEEDING NOTES: (BMP C120)

1. SEED MIXTURE SHALL BE: 40% CHEWINGS OR ANNUAL BLUEGRASS, 50% PERENNIAL RYE, 5% RED TOP OR COLONIAL BENTGRASS AND 5% WHITE DUTCH CLOVER APPLIED AT THE RATE OF 120 POUNDS PER ACRE.
2. SEED BEDS PLANTED BETWEEN MAY 1 AND OCTOBER 31 WILL REQUIRE IRRIGATION AND OTHER MAINTENANCE AS NECESSARY TO FOSTER AND PROTECT THE ROOT STRUCTURE.
3. FOR SEED BEDS PLANTED BETWEEN OCTOBER 31 AND APRIL 30, ARMORING OF THE SEED BED WILL BE NECESSARY (E.G., GEOTEXTILES, JUTE MAT, CLEAR PLASTIC COVERING).
4. BEFORE SEEDING, INSTALL NEEDED SURFACE RUNOFF CONTROL MEASURES SUCH AS GRADIENT TERRACES, INTERCEPTOR DIKES, SWALES, LEVEL SPREADERS AND SEDIMENT BASINS.
5. THE SEEDBED SHALL BE FIRM WITH A FAIRLY FINE SURFACE, FOLLOWING SURFACE ROUGHENING. PERFORM ALL CULTURAL OPERATIONS ACROSS OR AT RIGHT ANGLES TO THE SLOPE.
6. FERTILIZERS ARE TO BE USED ACCORDING TO SUPPLIERS RECOMMENDATIONS. AMOUNTS USED SHOULD BE MINIMIZED, ESPECIALLY ADJACENT TO WATER BODIES AND WETLANDS.

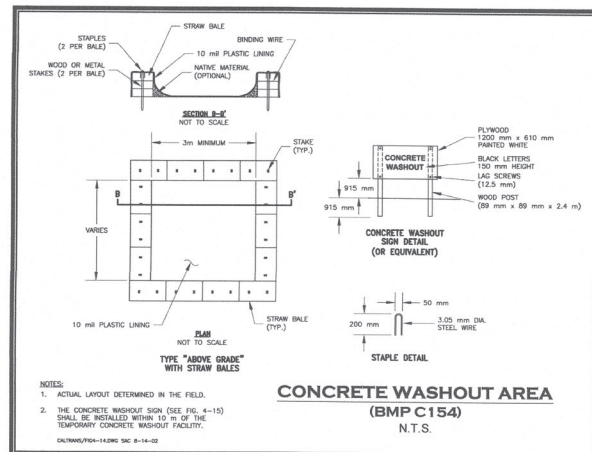
MULCH NOTES: (BMP C121)

1. MULCH MATERIALS USED SHALL BE HAY OR STRAW, AND SHALL BE APPLIED AT THE RATE OF 2 - 3 TONS / ACRE OR OTHER WOOD FIBER CELLULOSE MATERIAL TO BE APPLIED AT THE RATE OF APPROXIMATELY 100 TONS / ACRE.
2. MULCHES SHALL BE APPLIED IN ALL AREAS WITH EXPOSED SOILS.
3. MULCHING SHALL BE USED IMMEDIATELY AFTER SEEDING OR IN AREAS WHICH CANNOT BE SEEDED BECAUSE OF THE SEASON.
4. ALL AREAS NEEDING MULCH SHALL BE COVERED BY NOVEMBER 1.
5. MULCH MUST BE MAINTAINED UNTIL SITE HAS ESTABLISHED 80% GRASS COVERAGE.



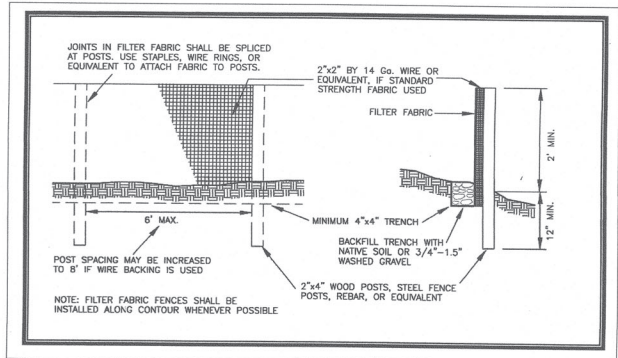
INLET SEDIMENT PROTECTION NOTES: (BMP C220)

1. INSTALL INSERT PER THE MANUFACTURER'S SPECIFICATIONS
2. MAINTAIN AND REPLACE INSERTS AS RECOMMENDED BY THE MANUFACTURER, AS REQUIRED BY THE INSPECTOR OR PROJECT ENGINEER, AND AS OTHERWISE NECESSARY.



CLEARING / CONSTRUCTION LIMITS FENCING NOTES:

1. THE CONTRACTOR SHALL PERFORM THE FOLLOWING BEFORE THE START OF ANY CLEARING AND GRADING
 - A. SURVEY / LOCATE CONSTRUCTION LIMITS, WETLAND BUFFER, AND TREE PROTECTION AREAS AS DELINEATED ON THE APPROVED SITE PLAN.
 - B. INSTALL POSTS FOR FENCING. (T-BAR METAL POSTS, MAXIMUM 8 FEET ON CENTER, INSTALLED AT LOCATIONS SHOWN ON THE APPROVED TESC PLANS.)
 - C. THE TOP 2 FEET OF THE FENCING POSTS SHALL BE PAINTED BRIGHT PINK OR ORANGE.
 - D. ONCE THE CITY'S INSPECTOR HAS REVIEWED AND APPROVED THE CONSTRUCTION / CLEARING LIMITS FENCING, CLEARING AND GRADING MAY BEGIN ON-SITE.
2. FENCING SHALL BE MAINTAINED THROUGHOUT CONSTRUCTION AND GRADING, AND NOT BE REMOVED UNTIL FINAL LANDSCAPING IS IN PROGRESS.



SILT FENCE NOTES: (BMP C233)

1. FILTER FABRIC SHALL BE PURCHASED IN A CONTINUOUS ROLL CUT TO THE LENGTH OF THE BARRIER TO AVOID USE OF JOINTS. WHEN JOINTS ARE NECESSARY, FILTER CLOTH SHALL BE SPICED TOGETHER ONLY AT A SUPPORT POST, WITH A MINIMUM 6-INCH OVERLAP, AND SECURELY FASTENED AT BOTH ENDS TO POST.
2. POSTS SHALL BE SPACED A MAXIMUM OF 6 FEET APART AND DRIVEN SECURELY INTO THE GROUND (MINIMUM OF 12 INCHES).
3. A TRENCH SHALL BE EXCAVATED APPROXIMATELY 4 INCHES WIDE AND 4 INCHES DEEP ALONG THE LINE OF POSTS AND UPSLOPE FROM THE BARRIER.
4. WHEN STANDARD STRENGTH FILTER FABRIC IS USED, A WIRE MESH SUPPORT FENCE SHALL BE FASTENED SECURELY TO THE UPSLOPE SIDE OF THE POSTS USING HEAVY-DUTY WIRE STAPLES AT LEAST 1 INCH LONG, TIE WIRES OR HOG RINGS. THE WIRE SHALL EXTEND INTO THE TRENCH A MINIMUM OF 4 INCHES AND SHALL NOT EXTEND MORE THAN 24 INCHES ABOVE THE ORIGINAL GROUND SURFACE.
5. THE STANDARD STRENGTH FILTER FABRIC SHALL BE STAPLED OR WIRED TO THE FENCE, AND 20 INCHES OF THE FABRIC SHALL BE EXTENDED INTO THE TRENCH. THE FABRIC SHALL NOT EXTEND MORE THAN 24 INCHES ABOVE THE ORIGINAL GROUND SURFACE. FILTER FABRIC SHALL NOT BE STAPLED TO EXISTING TREES.
6. WHEN EXTRA-STRENGTH FILTER FABRIC AND CLOSER POST SPACING IS USED, THE WIRE MESH SUPPORT FENCE MAY BE ELIMINATED. IN SUCH A CASE, THE FILTER FABRIC IS STAPLED OR WIRED DIRECTLY TO THE POSTS WITH ALL OTHER PROVISIONS OF ABOVE NOTES APPLYING.
7. FILTER FABRIC FENCES SHALL NOT BE REMOVED BEFORE THE UP SLOPE AREA HAS BEEN PERMANENTLY STABILIZED.
8. FILTER FABRIC FENCES SHALL BE INSPECTED IMMEDIATELY AFTER EACH RAINFALL AND AT LEAST DAILY DURING PROLONGED RAINFALL. ANY REQUIRED REPAIRS SHALL BE MADE IMMEDIATELY.
9. FILTER FABRIC FENCING TO BE INSTALLED AT A MINIMUM AS SHOWN ON THESE PLANS. ADDITIONAL FILTER FABRIC FENCING TO BE INSTALLED AT ANY LOCATION WHERE RUNOFF COULD LEAVE THE SITE. WITH INSPECTOR APPROVAL, FILTER FABRIC FENCING AND CLEARING LIMITS FENCING MAY BE COMBINED BY USING ORANGE FILTER FABRIC FENCING.

TP# 80630000200
OLYMPIA SHEET METAL
8947 SELECT CT SE, TUMWATER, WA 98512

AGENCY NO. 20-1462
SHEET: 3 OF 14
H:\DGN\20-000\20-100\CDs
INDEX: 20-100 details.dwg
JOB: 20-100

TESC DETAILS

REVISIONS:

DATE:

HATTON GODAT PANTIER
ENGINEERS AND SURVEYORS
3910 MARTIN WAY E, SUITE B
OLYMPIA, WA 98506
TEL: 360.943.1599 FAX: 360.357.6299
hattonpantier.com

DESIGNED BY: JTG
DRAWN BY: MAM
CHECKED BY: CPM
DATE: DECEMBER 2021
SCALE: H N/A
V N/A

