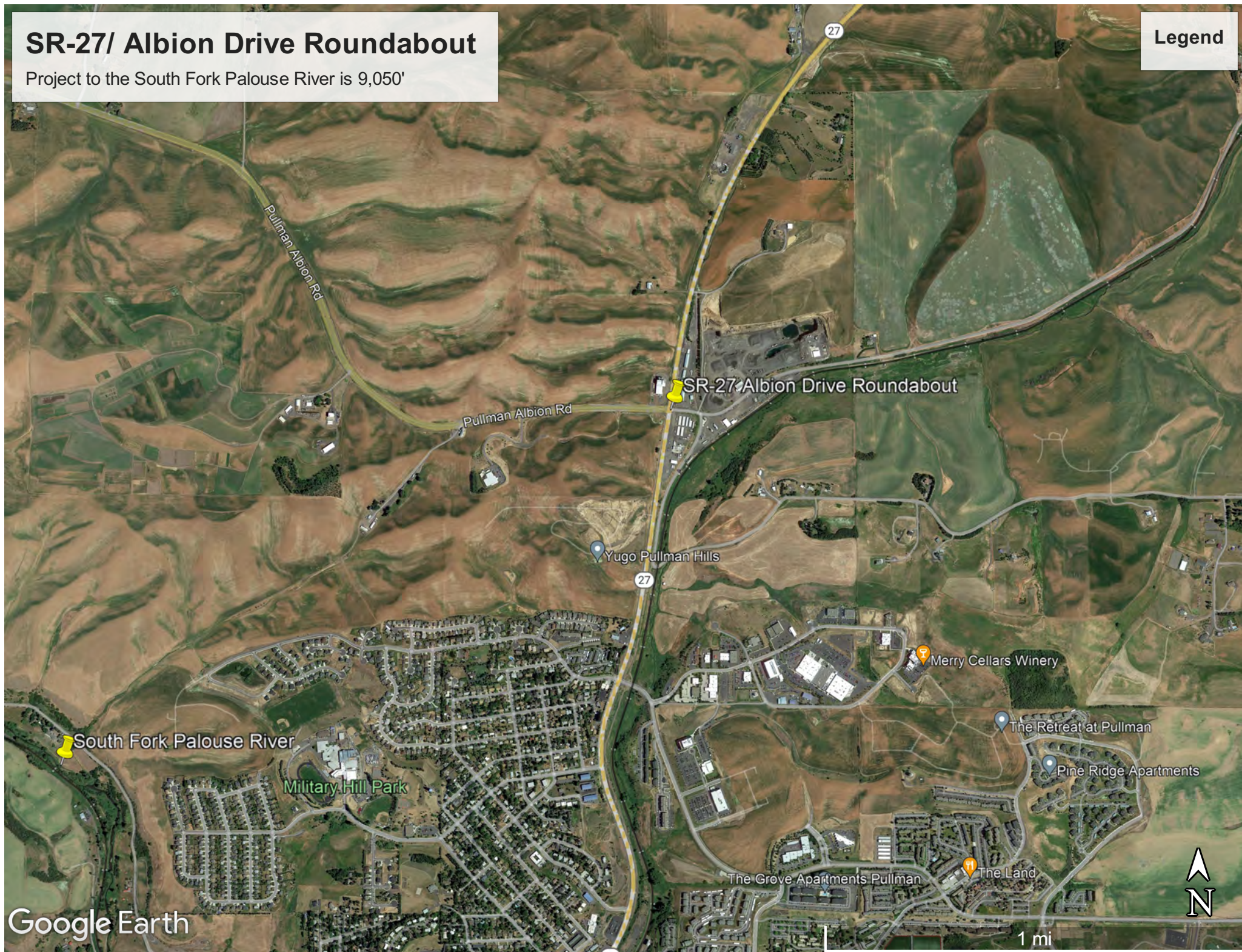


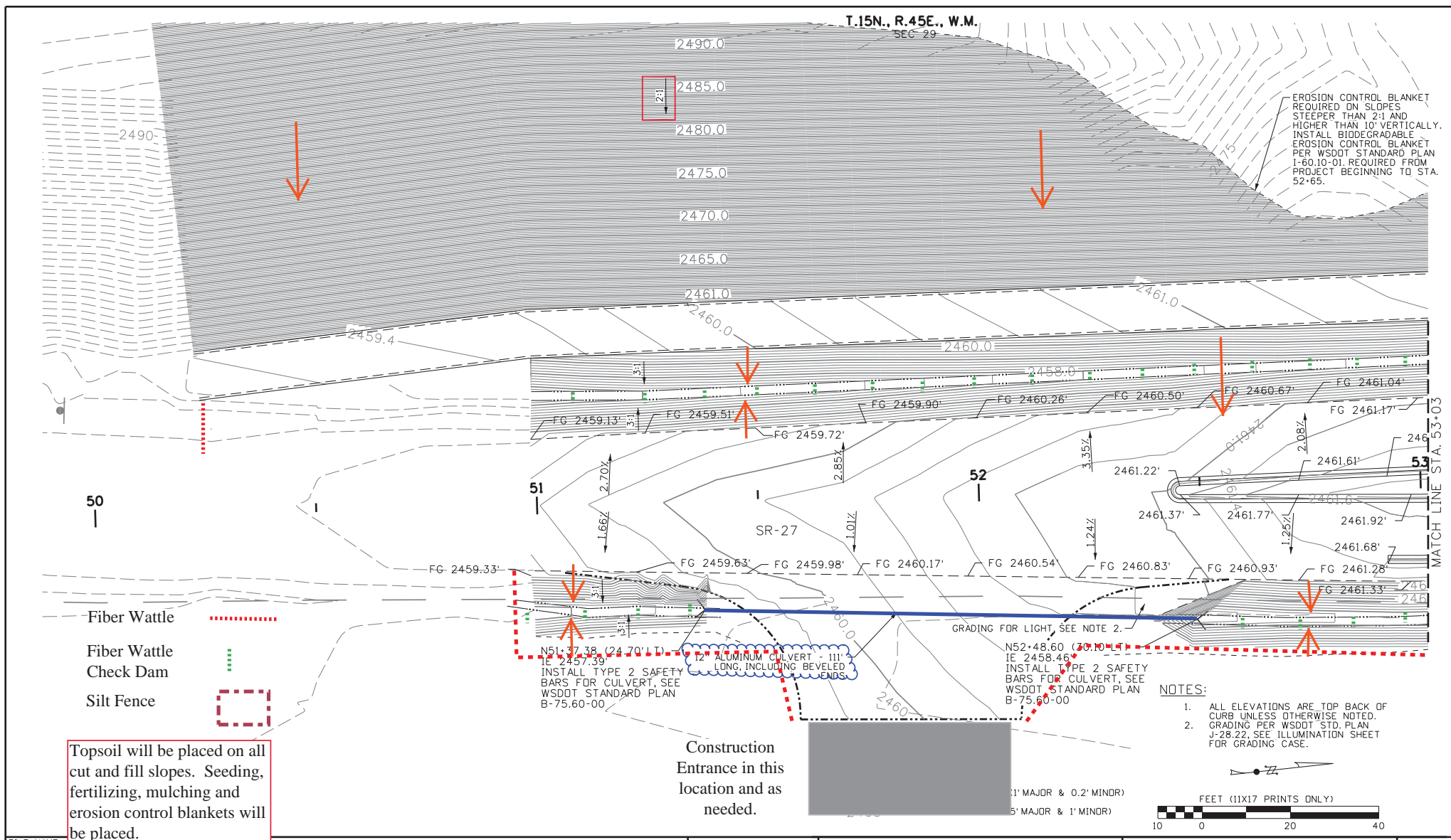
# SR-27/ Albion Drive Roundabout

Project to the South Fork Palouse River is 9,050'

Legend



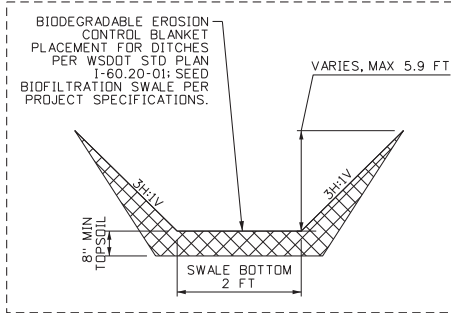




FILE NAME	4:39:29 PM	REGION NO.	STATE	FED.AID PROJ.NO.		<b>T-O ENGINEERS</b> 1717 S. RUSTLE STREET SUITE 201 SPOKANE, WA 99224 PHONE: (509) 319-2580    WWW.TO-ENGINEERS.COM	SR-27/ ALBION DRIVE ROUNDABOUT SR-27: M.P. 2.13 TO M.P. 2.28 GRADING PLANS	PLAN REF. NO. GR01
TIME	8/11/2021	6	WASH					
DATE								
PLOTTED BY	A. JONDAL							
DESIGNED BY	A. JONDAL							
ENTERED BY								
CHECKED BY	B. WHITE							
PROJ. ENGR.	P. SZOBONYA							
REGIONAL ADM.								
REVISION								
DATE								
BY								



# BIOFILTRATION SWALE TYPICAL SECTION N.T.S.



## LEGEND:

- 2460- PROPOSED CONTOURS (1' MAJOR & 0.2' MINOR)
- 2460- EXISTING CONTOURS (5' MAJOR & 1' MINOR)

## NOTES:

- ALL ELEVATIONS ARE TOP BACK OF CURB UNLESS OTHERWISE NOTED.
- GRADING PER WSDOT STD. PLAN J-28.22. SEE ILLUMINATION SHEET FOR GRADING CASE.

Topsoil will be placed on all cut and fill slopes. Seeding, fertilizing, mulching and erosion control blankets will be placed.

Fiber Wattle



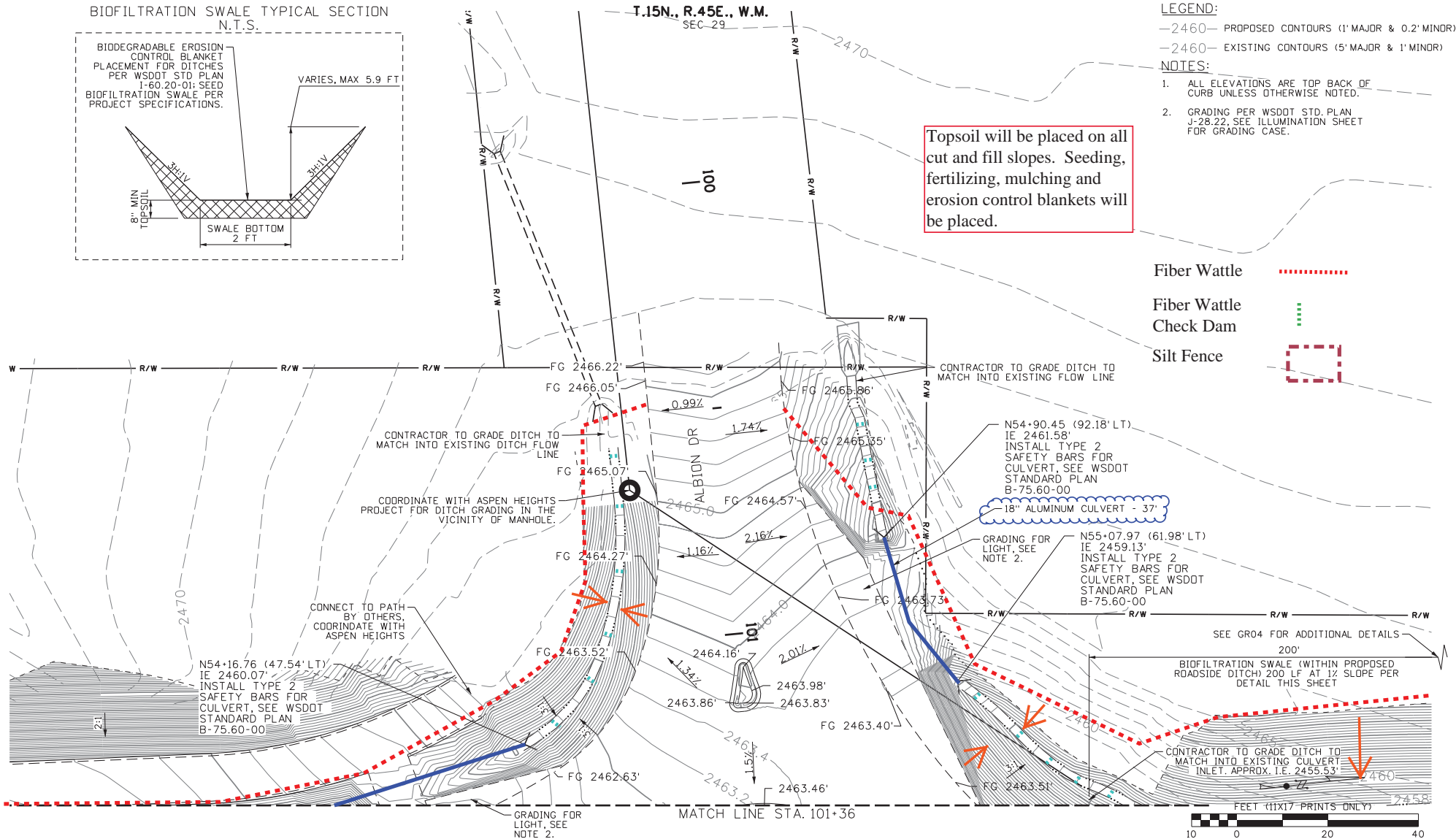
Fiber Wattle



Check Dam



Silt Fence



FILE NAME 200199: GRADING PLAN 3.DGN

TIME 10:55:00 AM

DATE 11/23/2021

PLOTTED BY A. JONDAL

DESIGNED BY A. JONDAL

ENTERED BY

CHECKED BY B. WHITE

PROJ. ENGR. P. SZOBONYA

REGIONAL ADM.

REGION NO.

STATE

6 WASH

JOB NUMBER

200199

CONTRACT NO.

DATE

FED.AID PROJ.NO.

LOCATION NO.

DATE

DATE

DATE

DATE

DATE

DATE



T-O ENGINEERS

1717 S. RUSTLE STREET SUITE 201  
SPOKANE, WA 99224

PHONE: (509) 319-2580

WWW.TO-ENGINEERS.COM

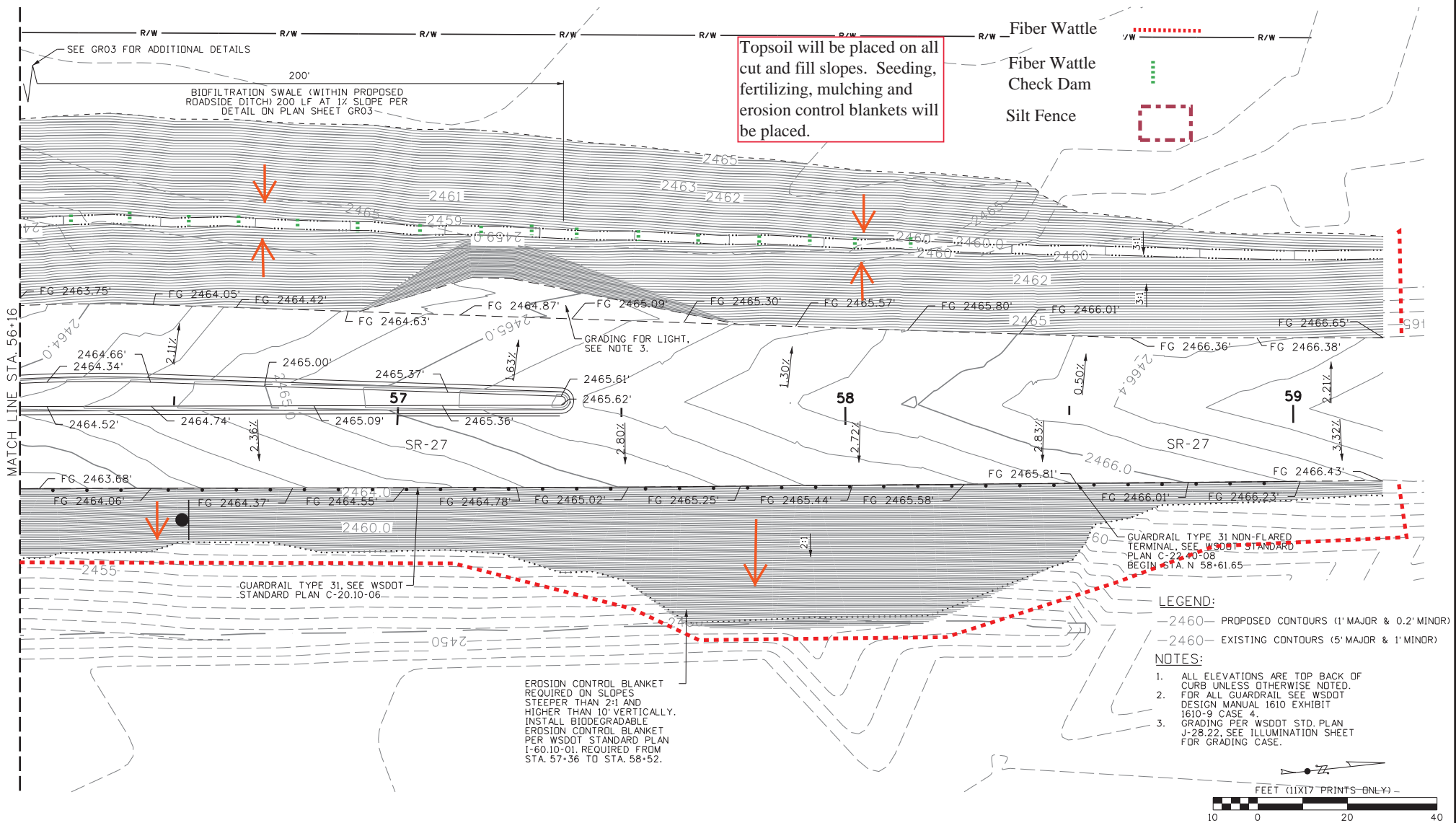
SR-27/ ALBION DRIVE  
ROUNDBOUT  
SR-27: M.P. 2.13 TO M.P. 2.28



GRADING PLANS

PLAN REF. NO.  
GR03

SHEET  
20  
OF  
30  
SHEETS





FILE NAME		200199: GRADING PLAN 4.DGN				REGION NO.		STATE		FED.AID PROJ.NO.			 <b>T-O ENGINEERS</b>	SR-27/ ALBION DRIVE ROUNDABOUT SR-27: M.P. 2.13 TO M.P. 2.28		PLAN REF. NO.
TIME		4:39:31 PM				6		WASH								GR04
DATE		8/11/2021				JOB NUMBER		200199		LOCATION NO.						SHEET
PLOTTED BY		A. JONDAL				CONTRACT NO.										21
DESIGNED BY		A. JONDAL														OF
ENTERED BY														30		
CHECKED BY		B. WHITE												SHEETS		
PROJ. ENGR.		P. SZOBONYA														
REGIONAL ADM		REVISION														
		DATE				RY										