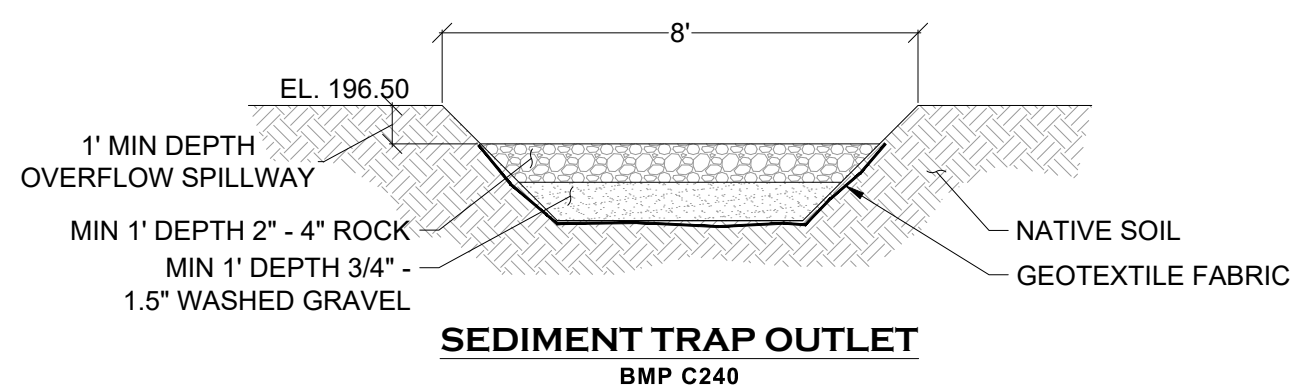
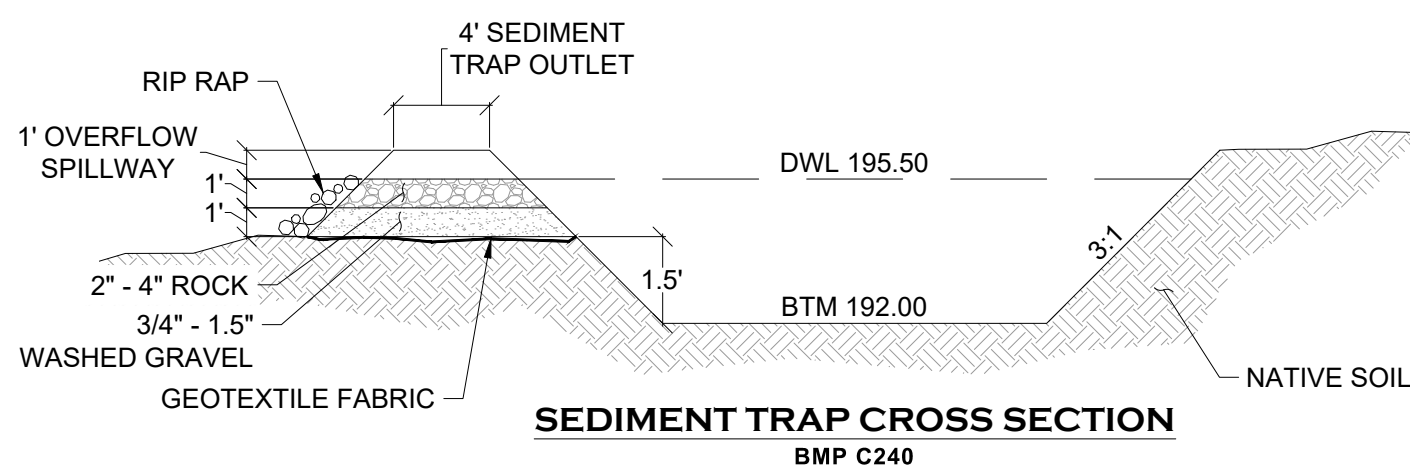


**GENERAL EROSION CONTROL NOTES:**

1. EROSION CONTROL MEASURES SHALL BE IN PLACE PRIOR TO THE BEGINNING OF CONSTRUCTION. THE PROJECT ENGINEER AND THE REVIEWING AGENCY SHALL INSPECT AND APPROVE THE INSTALLATION OF EROSION CONTROL MEASURES PRIOR TO BEGINNING CONSTRUCTION.
2. EROSION CONTROL MEASURES ARE NOT LIMITED TO THE ITEMS SHOWN ON THIS PLAN. THE CONTRACTOR SHALL BE RESPONSIBLE FOR THE INSTALLATION AND MAINTENANCE OF ALL EROSION CONTROL MEASURES. SILTATION OF EXISTING OR PROPOSED DRAINAGE FACILITIES SHALL NOT BE ALLOWED. CARE SHALL BE TAKEN TO PREVENT MIGRATION OF SILTS TO OFF SITE PROPERTIES.
3. THE CONTRACTOR SHALL MAKE DAILY SURVEILLANCE OF ALL EROSION CONTROL MEASURES AND MAKE ANY NECESSARY REPAIRS OR ADDITIONS TO THE EROSION CONTROL MEASURES AS REQUIRED. THE CONTRACTOR SHALL PROVIDE ADDITIONAL EROSION CONTROL MEASURES AS DETERMINED NECESSARY BY THE INSPECTOR OR PROJECT ENGINEER. FAILURE TO COMPLY WITH ALL LOCAL AND STATE EROSION CONTROL REQUIREMENTS MAY RESULT IN CIVIL PENALTIES BEING LEVIED AGAINST THE CONTRACTOR.
4. DURING THE WET SEASON, OCTOBER TO APRIL INCLUSIVE, ALL DISTURBED SOILS SHALL BE STABILIZED WITHIN 48 HOURS AFTER STOP OF WORK. EROSION CONTROL MEASURES SHALL INCLUDE, BUT ARE NOT LIMITED TO, COVERING THE AFFECTED AREA INCLUDING SPOIL PILES WITH PLASTIC SHEETING, STRAW MATTING, JUTE MATTING, STRAW MULCH, OR WOOD CHIPS. SEEDING OF THE DISTURBED AREAS SHALL TAKE PLACE AS WEATHER PERMITS.
5. ALL SEEDED OR SODDED AREAS SHALL BE CHECKED REGULARLY TO ENSURE VEGETATIVE COVERAGE IS COMPLETE. AREAS SHALL BE REPAIRED, RESEDED, AND FERTILIZED AS REQUIRED.
6. TRACKING OF SOIL OFF SITE WILL NOT BE ALLOWED. IF SOIL IS TRACKED ON TO A PUBLIC STREET, IT SHALL BE REMOVED BY THE END OF THAT WORKING DAY. ANY FURTHER TRACKING OF MUD SHALL THEN BE PREVENTED BY SWEEPING OR WASHING OF THE VEHICLE'S TIRES BEFORE DRIVING ON A CITY STREET.
7. NO MORE THAN 300LF OF TRENCH SHALL BE OPENED AT ONE TIME.
8. EXCAVATED MATERIAL SHALL BE PLACED ON THE UPHILL SIDE OF TRENCHES.
9. TRENCH DEWATERING DEVICES SHALL BE DISCHARGED IN A MANNER THAT WILL NOT ADVERSELY AFFECT FLOWING STREAMS, DRAINAGE SYSTEMS, OR OFF SITE PROPERTIES.
10. ALL STORM SEWER INLETS RECEIVING RUNOFF FROM THE PROJECT DURING CONSTRUCTION SHALL BE PROTECTED SO THAT SEDIMENT-LADEN WATER WILL BE FILTERED BEFORE ENTERING THE CONVEYANCE SYSTEM.
11. ALL OFF SITE CATCH BASINS IMMEDIATELY ADJACENT TO THE SITE SHALL BE PROTECTED FROM SILTATION.
12. ALL DISTURBED AREAS SHALL BE SEEDED OR SODDED UPON COMPLETION OF WORK. THE CONTRACTOR SHALL BE RESPONSIBLE TO ENSURE THAT COMPLETE COVERAGE OF THE DISTURBED AREAS IS PROVIDED AND THAT GROWTH OF VEGETATION IS ESTABLISHED.

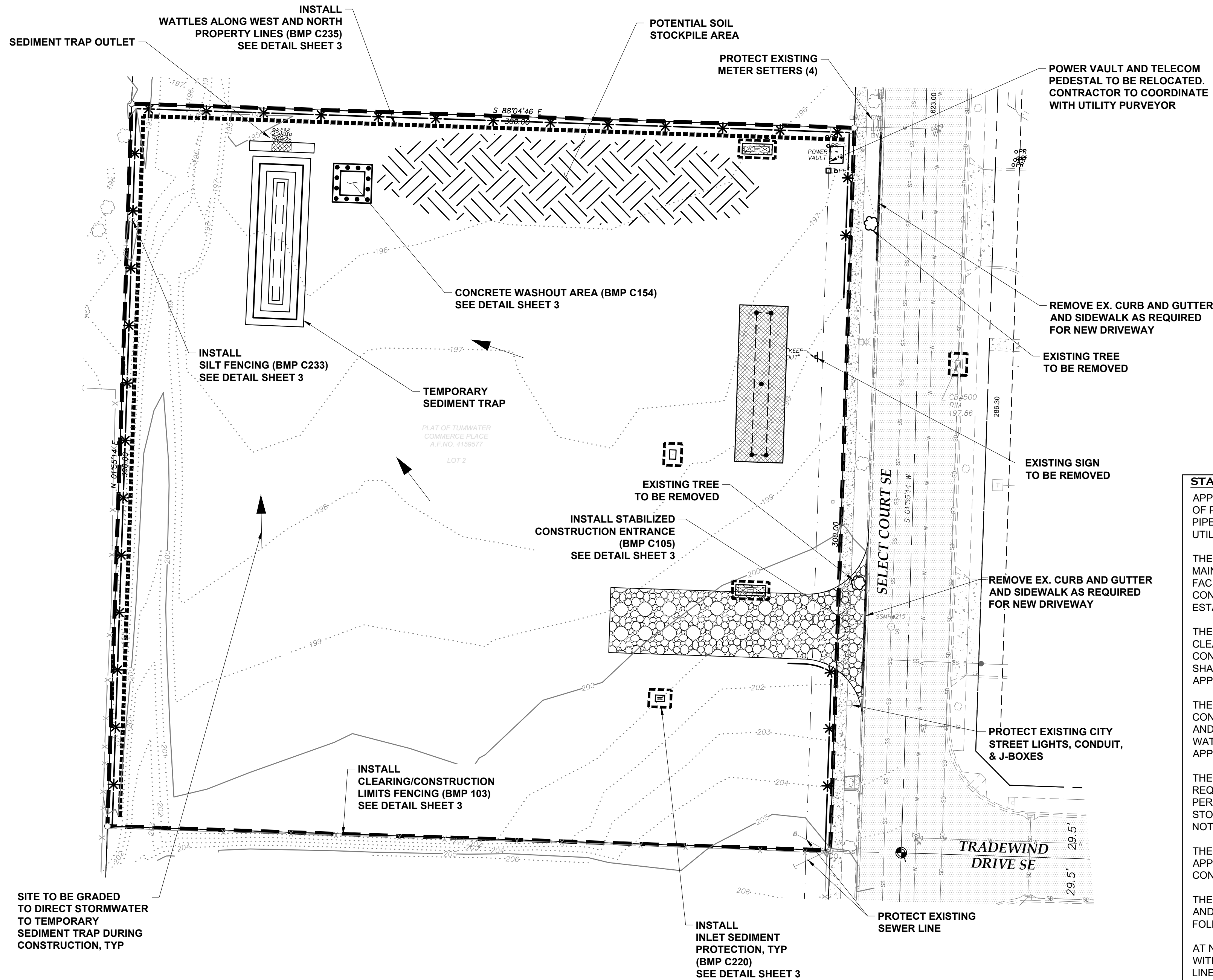
**FILTER VAULT NOTES:**

FILTER VAULTS SHALL BE IN BYPASS MODE UNTIL FINAL STABILIZATION OF THE SITE HAS BEEN ESTABLISHED.



THE CONTRACTOR SHALL BE FULLY RESPONSIBLE FOR THE LOCATION AND PROTECTION OF ALL EXISTING UTILITIES. THE CONTRACTOR SHALL VERIFY ALL UTILITY LOCATIONS PRIOR TO CONSTRUCTION BY CALLING THE UNDERGROUND LOCATE LINE AT 811 A MINIMUM OF 48 HOURS PRIOR TO ANY EXCAVATION.

THIS DRAWING DOES NOT REPRESENT A RECORD DOCUMENT, UNLESS CERTIFIED BY HATTON GODAT PANTIER.  
ANY ALTERATIONS TO THE DESIGN SHOWN HEREON MUST BE REVIEWED AND APPROVED BY HATTON GODAT PANTIER.



**LEGEND**

- CLEARING LIMITS
- \* SILT FENCE
- INLET SEDIMENT PROTECTION
- WATTLES

**STANDARD SWPPP NOTES:**

APPROVAL OF THIS CONSTRUCTION SWPPP DOES NOT CONSTITUTE AN APPROVAL OF PERMANENT ROAD OR DRAINAGE DESIGN (E.G., SIZE AND LOCATION OF ROADS, PIPES, RESTRICTORS, CHANNELS, RETENTION/DETENTION/INFILTRATION FACILITIES, UTILITIES, ETC.).

THE IMPLEMENTATION OF THIS CONSTRUCTION SWPPP AND THE CONSTRUCTION, MAINTENANCE, REPLACEMENT, AND UPGRADING OF THESE CONSTRUCTION SWPPP FACILITIES IS THE RESPONSIBILITY OF THE APPLICANT/CONTRACTOR UNTIL ALL CONSTRUCTION IS COMPLETED AND APPROVED AND VEGETATION/LANDSCAPING IS ESTABLISHED.

THE BOUNDARIES OF THE CLEARING LIMITS SHOWN ON THIS PLAN SHALL BE CLEARLY FLAGGED IN THE FIELD PRIOR TO CONSTRUCTION. DURING THE CONSTRUCTION PERIOD, NO DISTURBANCE BEYOND THE FLAGGED CLEARING LIMITS SHALL BE PERMITTED. THE FLAGGING SHALL BE MAINTAINED BY THE APPLICANT/CONTRACTOR FOR THE DURATION OF CONSTRUCTION.

THE CONSTRUCTION SWPPP FACILITIES SHOWN ON THIS PLAN MUST BE CONSTRUCTED IN CONJUNCTION WITH ALL CLEARING AND GRADING ACTIVITIES, AND IN SUCH A MANNER AS TO ENSURE THAT SEDIMENT AND SEDIMENT LADEN WATER DO NOT ENTER THE DRAINAGE SYSTEM, ROADWAYS, OR VIOLATE APPLICABLE WATER STANDARDS.

THE CONSTRUCTION SWPPP FACILITIES SHOWN ON THIS PLAN ARE THE MINIMUM REQUIREMENTS FOR ANTICIPATED SITE CONDITIONS. DURING THE CONSTRUCTION PERIOD, THESE ESC FACILITIES SHALL BE UPGRADED AS NEEDED FOR UNEXPECTED STORM EVENTS AND TO ENSURE THAT SEDIMENT AND SEDIMENT-LADEN WATER DO NOT LEAVE THE SITE.

THE CONSTRUCTION SWPPP FACILITIES SHALL BE INSPECTED DAILY BY THE APPLICANT/CONTRACTOR AND MAINTAINED AS NECESSARY TO ENSURE THEIR CONTINUED FUNCTIONING.

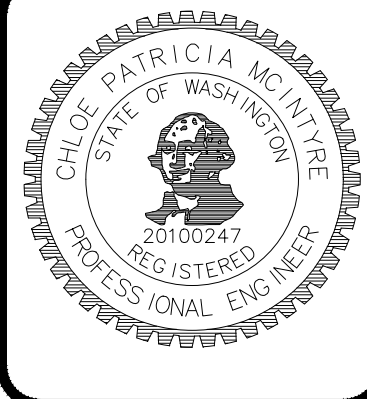
THE CONSTRUCTION SWPPP FACILITIES ON INACTIVE SITES SHALL BE INSPECTED AND MAINTAINED A MINIMUM OF ONCE A MONTH OR WITHIN THE 48 HOURS FOLLOWING A MAJOR STORM EVENT.

AT NO TIME SHALL MORE THAN 1 FOOT OF SEDIMENT BE ALLOWED TO ACCUMULATE WITHIN A CATCH BASIN TRAP (OR SUMP). ALL CATCH BASINS AND CONVEYANCE LINES SHALL BE CLEANED PRIOR TO PAVING. THE SEDIMENT CLEANING OPERATION SHALL NOT FLUSH SEDIMENT LADEN WATER INTO THE DOWNSTREAM SYSTEM.

STABILIZED CONSTRUCTION ENTRANCES SHALL BE INSTALLED AT THE BEGINNING OF CONSTRUCTION AND MAINTAINED FOR THE DURATION OF THE PROJECT. ADDITIONAL MEASURES MAY BE REQUIRED TO ENSURE THAT ALL PAVED AREAS ARE KEPT CLEAN FOR THE DURATION OF THE PROJECT.

CITY OF TUMWATER DRAINAGE DESIGN & EROSION CONTROL MANUAL  
VOLUME II, APPENDIX 11-A  
JANUARY 2018

DESIGNED BY: JTG  
DRAWN BY: MJM  
CHECKED BY: CPM  
DATE: DECEMBER 2021  
SCALE: H 1" = 30'  
V N/A



**HATTON GODAT PANTIER**  
ENGINEERS AND SURVEYORS  
3910 MARTIN WAY E. SUITE B  
OLYMPIA, WA 98506  
TEL: 360.943.1599 FAX: 360.357.6299  
hatterpantier.com

REVISIONS: DATE: 02/14/2022  
CITY COMMENTS

TPH 80630000200  
**OLYMPIA SHEET METAL**  
**8947 SELECT CT SE, TUMWATER, WA 98512**  
**EROSION & SEDIMENT**  
**CONTROL PLAN**  
A PORTION OF SECTION 14, TOWNSHIP 17 NORTH, RANGE 2 WEST, W.M.

AGENCY NO. 20-1462  
SHEET: 2 OF 14  
H:\DGN\20-000\20-100\CDs  
INDEX: 20-100 ec.dwg  
JOB: 20-100