

November 21, 2022

RECEIVED

DEC 01 2022

WA State Department
of Ecology (SWRO)

Eli Newby
Sand and Gravel General Permit Manager
Washington State Dept. of Ecology
P.O. Box 47775
Olympia, WA. 98504-7775

Re: Miles Sand & Gravel Shelton Pit – Sand & Gravel Permit No. – WAG501203 Compliance Inspection

Dear Eli Newby:

This is the reply to the letter dated Nov 10, 2022 and the Water Compliance Inspection Report from Nov 3, 2022.

- Monitoring points location G002 and G003 were both moved to places that are more representative of the mines related storm water. Monitoring point G002 has been moved to Lat. 47.211669° Long. -123.127593° and G003 Lat. 47.211196° Long. -123.132936°
- Monitoring point location G001 has been hard to access due to safety concerns. And we are changing the access to the monitoring point by raising the pipe and putting a walk way next to the out flow to create a safe way to access G001.
- Existing Discharge Monitoring Report has been corrected with "Analysis Not Completed / Not Conducted / Not Reported" selected for G001 with water present.
- All the containers that where stored outside of secondary containment have been moved into secondary containment or transferred to larger containers in secondary containment. Also the Acid treatment system has been removed.
- The pump has been removed from the Concrete Batch Plant Treatment Pond. The treatment system is working properly and is scheduled to be upgrade to a larger tank and system to accommodate more volume. At the present time we are waiting on tanks that have been ordered and are on back order due to supply chain issues.
- In the block casting area we are expanding the concrete area around this area and slopping it into the treatment area also adding a 3" berm around the perimeter.

Sincerely,



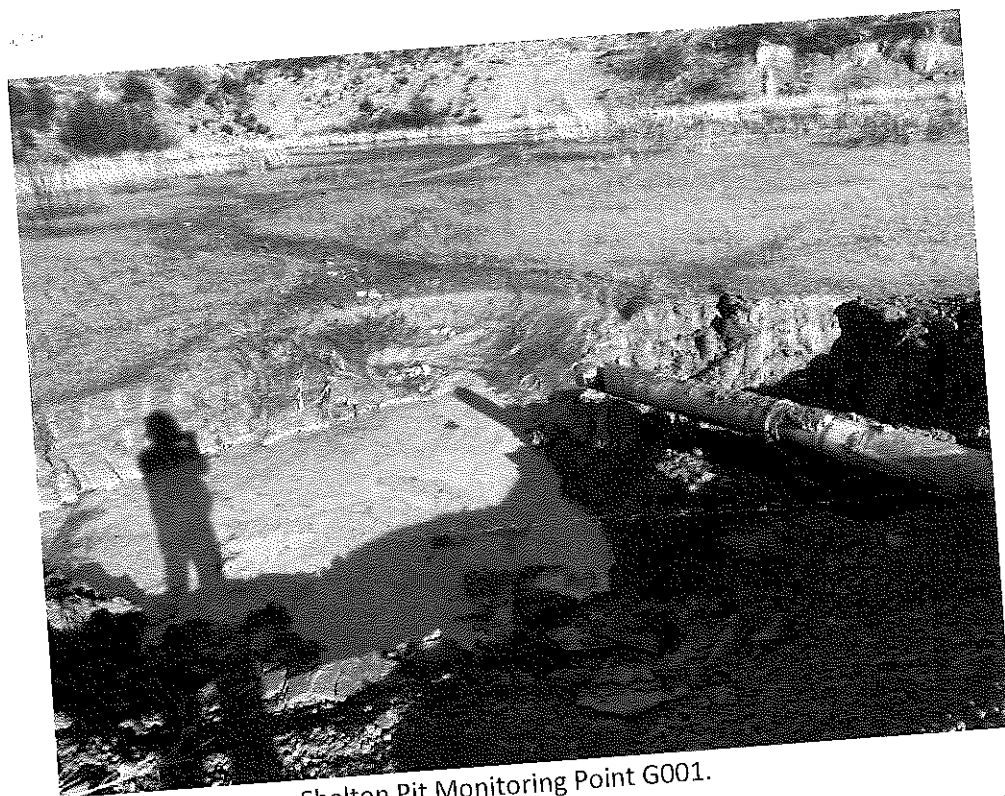
Ken Todd
Miles Sand and Gravel
400 Valley Ave. NE.
Puyallup, WA. 98372-2516



Shelton Pit New Monitoring Point G002.



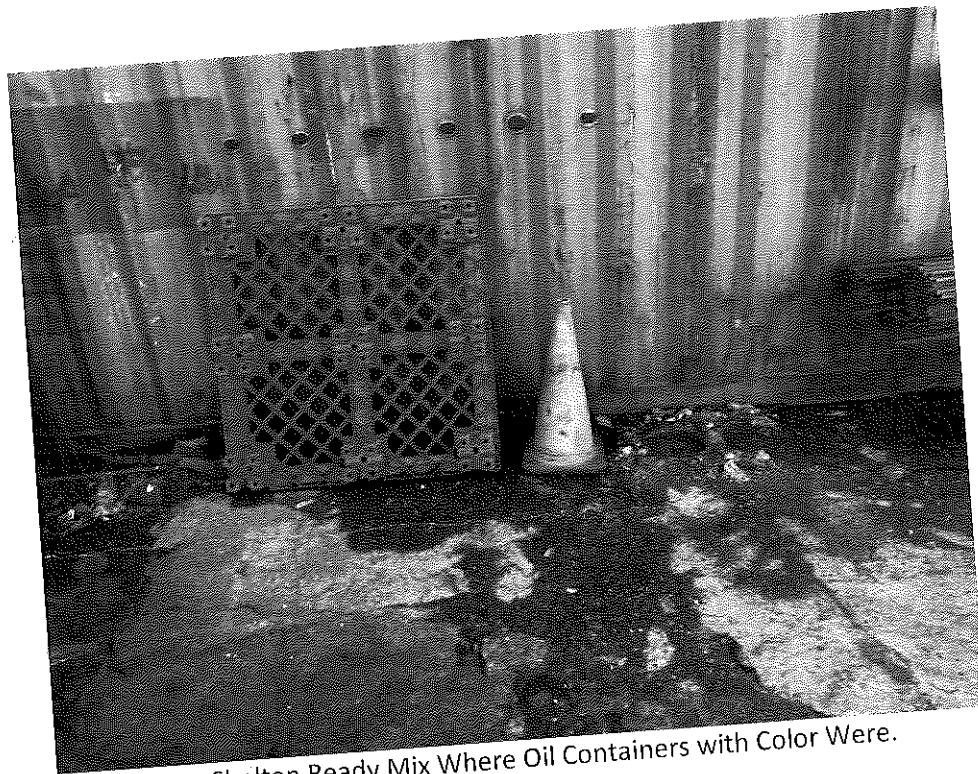
Shelton Pit New Monitoring Point G003.



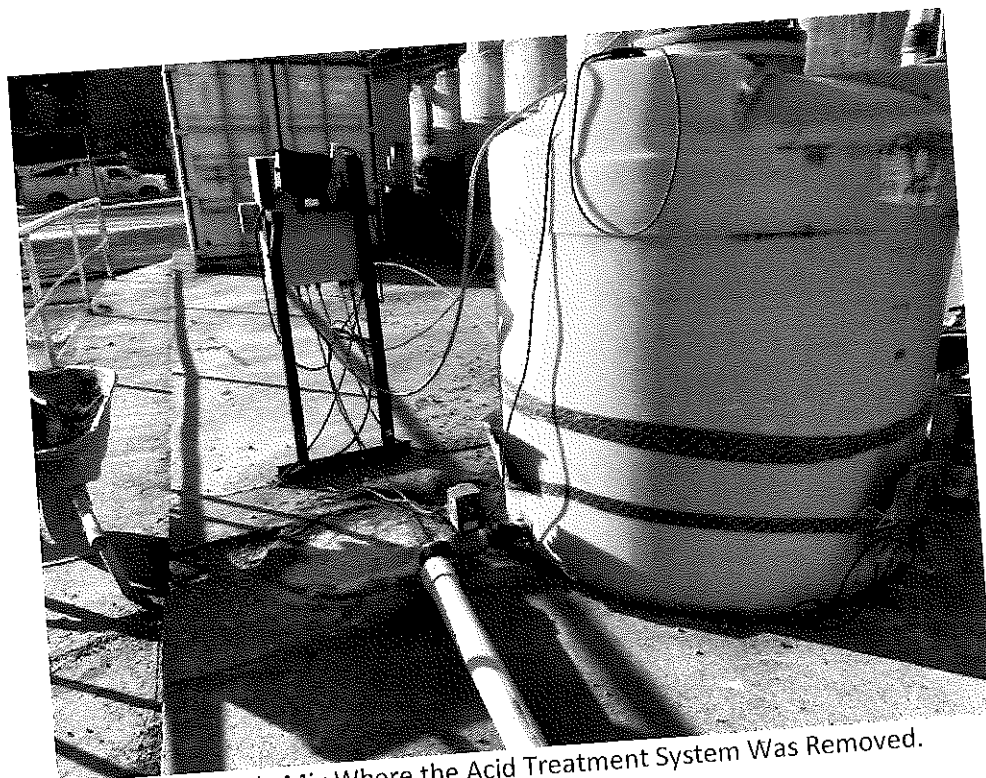
Shelton Pit Monitoring Point G001.



Shelton Pit Walkway for Monitoring Point G001.



Shelton Ready Mix Where Oil Containers with Color Were.



Shelton Ready Mix Where the Acid Treatment System Was Removed.



Shelton Ready Mix Cement process water pumped down and sludge removed.



Shelton Ready Mix block area adding more concrete slopping and putting in a 3" berm.