

DEPARTMENT OF ECOLOGY

APR 19 2023

WATER QUALITY PROGRAM

**ANNUAL PRE-TREATMENT PLAN
FOR ZOSTERA JAPONICA CONTROL ON COMMERCIAL
CLAM BEDS IN WILLAPA BAY
FOR
WILLAPA BAY SHELLFISH
WAG 993008**

Submitted to:

Washington Department of Ecology

April 14, 2023

Author:

David Beugli

WGHOGA

Annual Pre-Treatment Plan

The locations of acreage planned for treatment in 2023, including GPS coordinates of each corner of the area, size in acres of each area and cooperating adjacent land owners are shown in Table 1

Table 1. Coordinates of the overall area where japonica control will be implemented. Actual acres to be treated will be less than those indicated by the overall bed boundaries.

Bed Name	Parcel	Acres	Corner Coordinates		Cooperating Landowners
			Latitude	Longitude	
E147	79005000147	20	46.6137	-124.0361	Long Island Oyster co.
			46.6136	-124.0343	Heckes Clams Inc.
			46.6119	-124.0345	Coast Seafoods Co.
			46.6118	-124.0312	Grassy Island Clam Farms
			46.6118	-124.0312	
			46.6111	-124.036	
			46.6133	-124.0359	
E231	79005001231	9.5	46.6112	-124.0372	R&J Seafood
			46.6111	-124.0345	Coast Seafoods Co.
			46.6098	-124.0346	Heckes Clams Inc.
			46.6098	-124.0371	Grassy Island Clam Farms
			46.61	-124.0374	
			46.6103	-1214.0388	
			46.6107	-124.039	
TL51	12112755051	3	46.4980	-124.0282	Wiegardt & Sons Inc.
			46.4979	-124.0237	
			46.4971	-124.0239	
			46.4971	-124.0287	
D102	79004001102	10	46.4321	-124.0183	Heckes Clams Inc.
			46.4322	-124.0141	Herrold Fish & Oyster
			46.4297	-124.0140	R&J Seafood
			46.4296	-124.0185	

Annual Pre-Treatment Plan (Map)

Figures 1-3 shows the locations of proposed japonica treatments for 2023. In 2022 treatments occurred on bed D102.

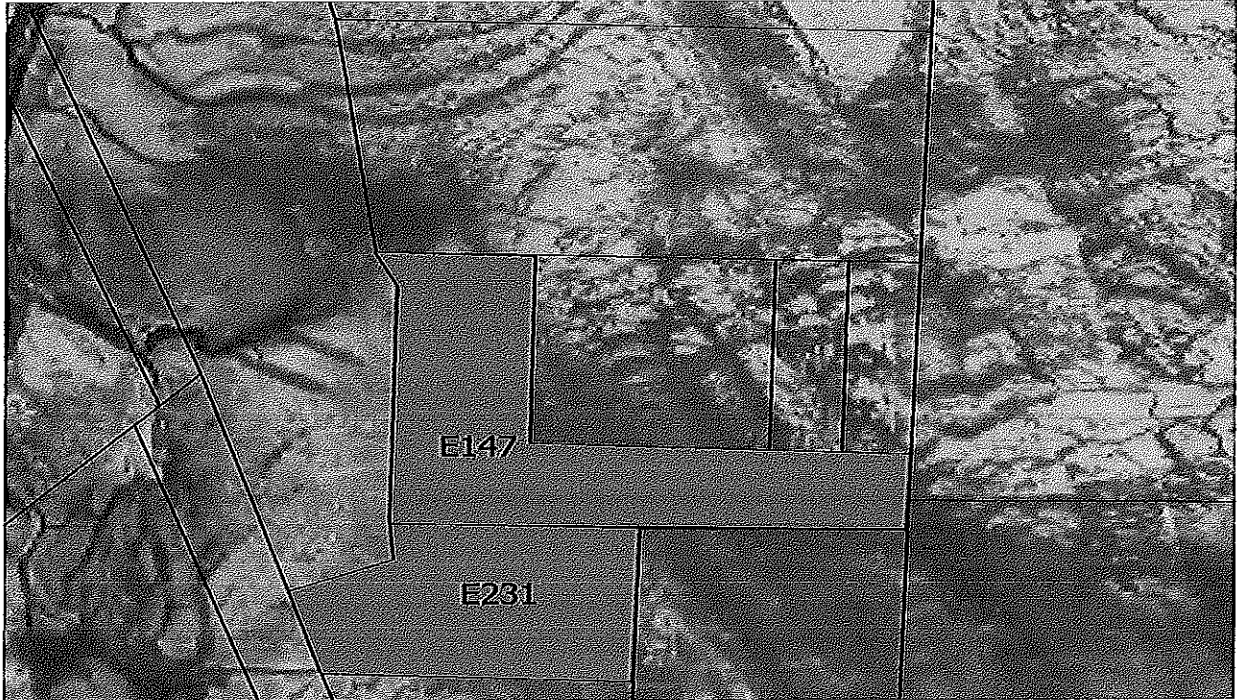
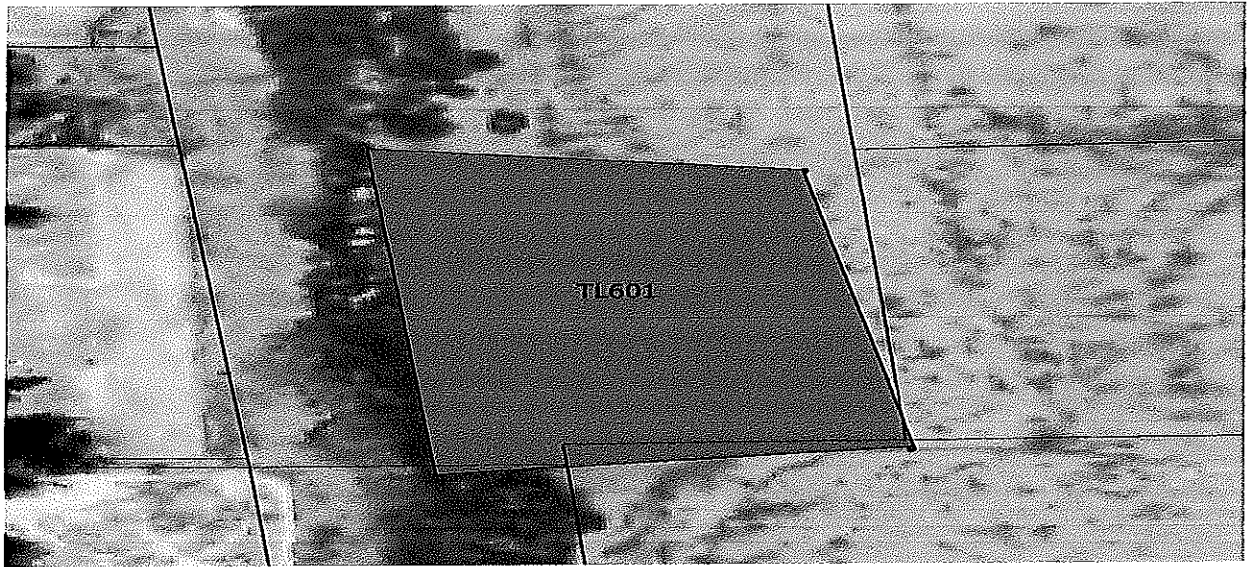


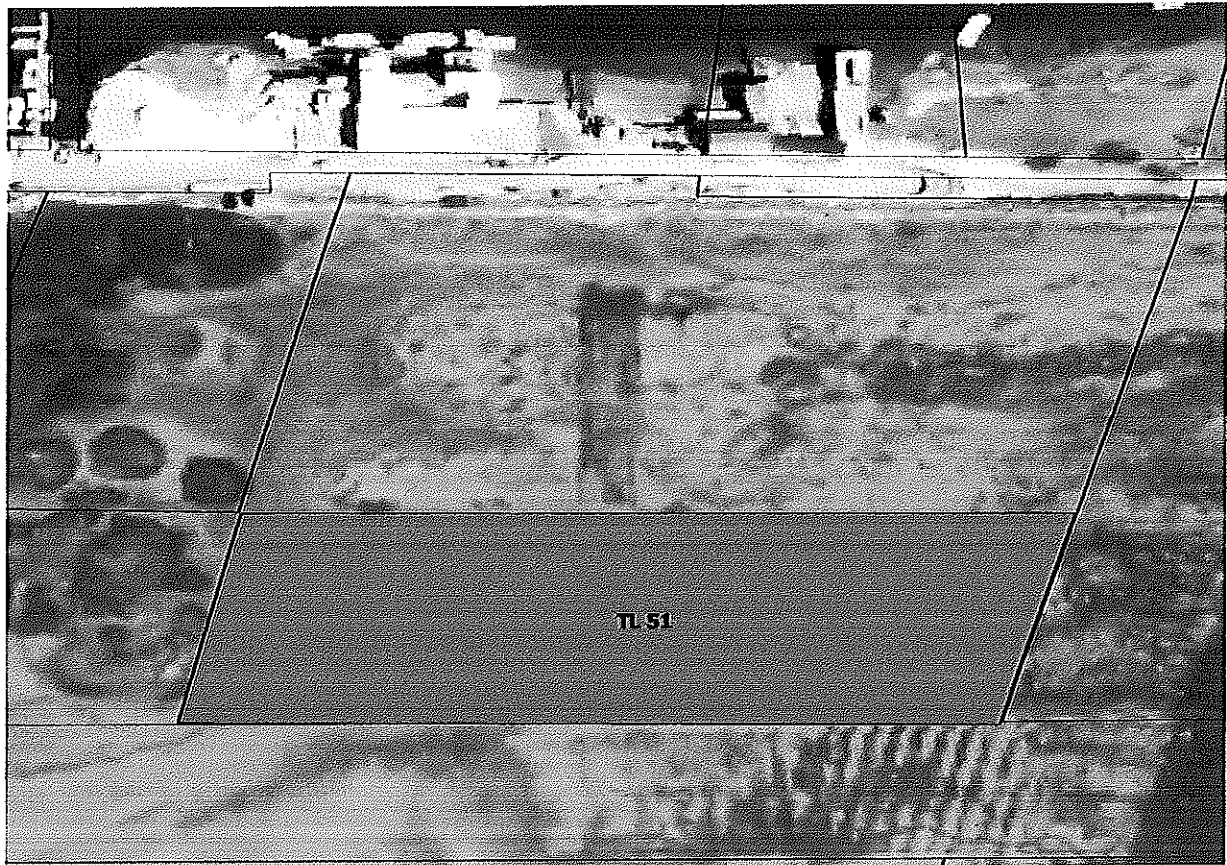
Figure 1. Parcels 79005000147, 79005001231.



Figure 2. Parcel 121122755052



Parcel 11112255601



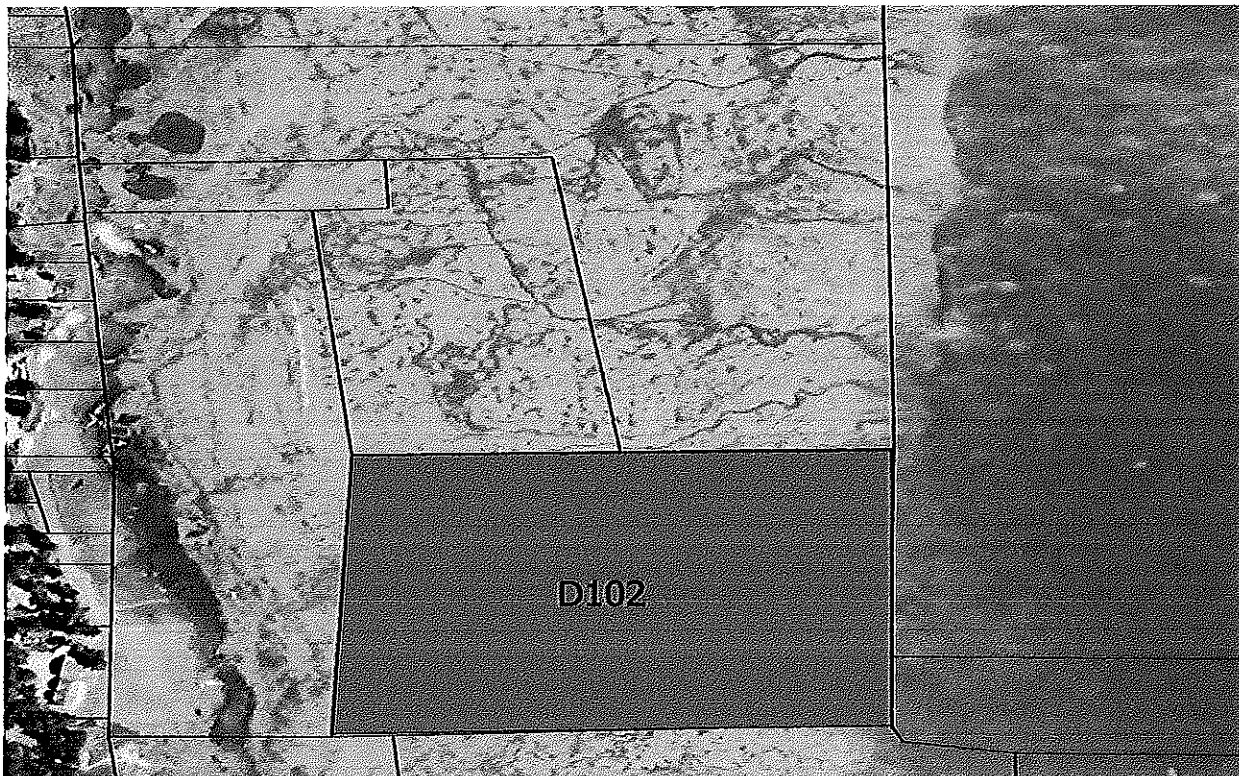


Figure 3. Parcel 79004001102

Signature Requirements

I certify under penalty of law, that this document and all attachments were prepared under my direction or supervision in accordance with a system designed to assure that qualified personnel properly gathered and evaluated the information submitted. Based on my inquiry of those persons directly responsible for gathering information, the information in the Pretreatment Plan is, to the best of my knowledge and belief, true, accurate, and complete and will be updated as necessary. I am aware that there are significant penalties for submitting false information, including the possibility of fine and imprisonment of knowing violations.

A handwritten signature in black ink, appearing to be a stylized 'R' or similar character.

Signature

A handwritten date in black ink, reading '4/12/23'.

Date