

Q81 Narrative for City of Enumclaw 2023 Annual Report

Q81 For TMDLs listed in Appendix 2: Attach a summary of relevant SWMP and Appendix 2 activities to address the applicable TMDL parameter(s). (S7.A)

2023 Compliance Activities

- Continued fecal coliform field sampling program at identified sites from creek mile 1.7 to 1.0 that discharge into Boise Creek to assist in illicit discharge detection and elimination. See attached bacterial field screening results.
- Engineering Technician continued to assist with fecal coliform bacteria field screening and source tracing efforts within the City.
- Added additional field fecal coliform sampling sites in the flume and laterals approximately 1 mile north of the confluence with the mainstream, north of SE 456th Street, between highway 410 to the west and Watson Street N. to the East. IDDE field screening for bacteria is ongoing in this area. Implemented schedules and activities identified in S5.C.5 in response to any illicit discharge found. See attached bacterial field screening results.
- Coordinated with King County Stormwater services to perform bacterial DNA testing on various samples sites in the flume and laterals approximately 1 mile north of the confluence with the mainstream, north of SE 456th Street, between highway 410 to the west and Watson Street N. to the East. This data has helped in determining potential sources of the bacteria present in the area (i.e. human or cow).
- Continue collaborating with King County, King Conservation District, WSDA, Seattle-King County Health, and Ecology to discuss TMDL strategies and share fecal coliform sampling data collected from creek mile 1.7 to 1.0 as well as the flume and laterals described above. Attended quarterly interagency meetings to discuss data and strategies to correct known issues across the Enumclaw Plateau.
- Assisted King County Stormwater Services and Seattle-King County Health with confirmation of an illicit connection to the County's MS4 through use of the City line camera and operator (2021).
- Bacterial field screening results and subsequent source tracing led to the discovery and elimination of two illicit sewer connections to the MS4 from two separate mobile homes in the Mt Villa Mobile Home Park (2019).
- Bacterial field screening results and subsequent source tracing led to the discovery and elimination of two illicit connections from onsite septic systems to the MS4. Worked with the property owners to eliminate the illicit connections within 6 months of discovery (2020).
- Bacterial source tracing efforts led to the discovery of 4 separate properties that were improperly disposing of pet waste in drainage ditch systems or stormwater ponds. Enforcement letters were sent to all property owners requiring clean-up and halt of this illicit practice. All properties have complied with the enforcement requirements and are now in compliance (2020).
- Bacterial source tracing efforts led to confirmation that significant bacterial loading (particularly winter loading) identified in the King County Drainage District Lateral A stream comes from a large agricultural property located outside the city limits. Ongoing coordination/collaboration

through the inter-agency group is being performed to identify potential options to eliminate this source.

- Sent an education and outreach general awareness letter on proper pet waste management and reasons not to feed birds to various properties adjacent to the King County Drainage District Lateral A stream as a component of efforts to reduce the elevated bacteria loading observed in that system. Letters were sent to approximately 110 property owners (2021).
- Partnered with the King Conservation District (KCD) Stream Steward program (2019-2020) by providing space in the City of Enumclaw waste water treatment plant to perform water quality analysis and store, clean and distribute water quality testing kits. KCD Stream Stewards perform water quality testing at sites from creek mile 1.7 to 1.0 that discharge into Boise Creek. This stewardship opportunity was formally terminated in 2023 do to budget and staffing constraints at KCD.
- Continued pet waste education and outreach activities according to S5.C.2 to increase awareness of bacterial pollution problems and promote proper pet waste management behavior (see Question 21 narrative for more information). This included pet waste education and outreach at the City's booth during the King County Fair (2021), Enumclaw Street Fair (2022), Enumclaw Street Fair (2023).
- Installed and maintained animal waste education and collection stations at permittee owned municipal parks and trails including: Boise Creek Park, Dwight Garrett Park, Ellenson Park (Enumclaw Dog Park), the Foothills Trail, Flensted Park, Holdner Park, Martin Johnson Park, McFarland Park, Montgomery Park, Battersby Trail, and the Rainier Trails Park. Require the installation of animal waste signage and collection stations at all private development with land areas where it can be reasonably expected to have substantial domestic animal use.
- Worked with owners of two separate garbage compactors to eliminate ongoing leaks and potential bacteria from these sources from entering the MS4 through surface runoff.
- In 2023, bacterial source control inspections performed at all commercial animal handling areas to ensure implementation of source control BMPs for bacteria (see source control inspection list for more information).

City of Enumclaw 2023 Bacteria Field Screening Location Map
Boise Creek Basin Area

Legend

IDDE Sampling Locations

■ Pending Results

● < 1

● 1 - 50

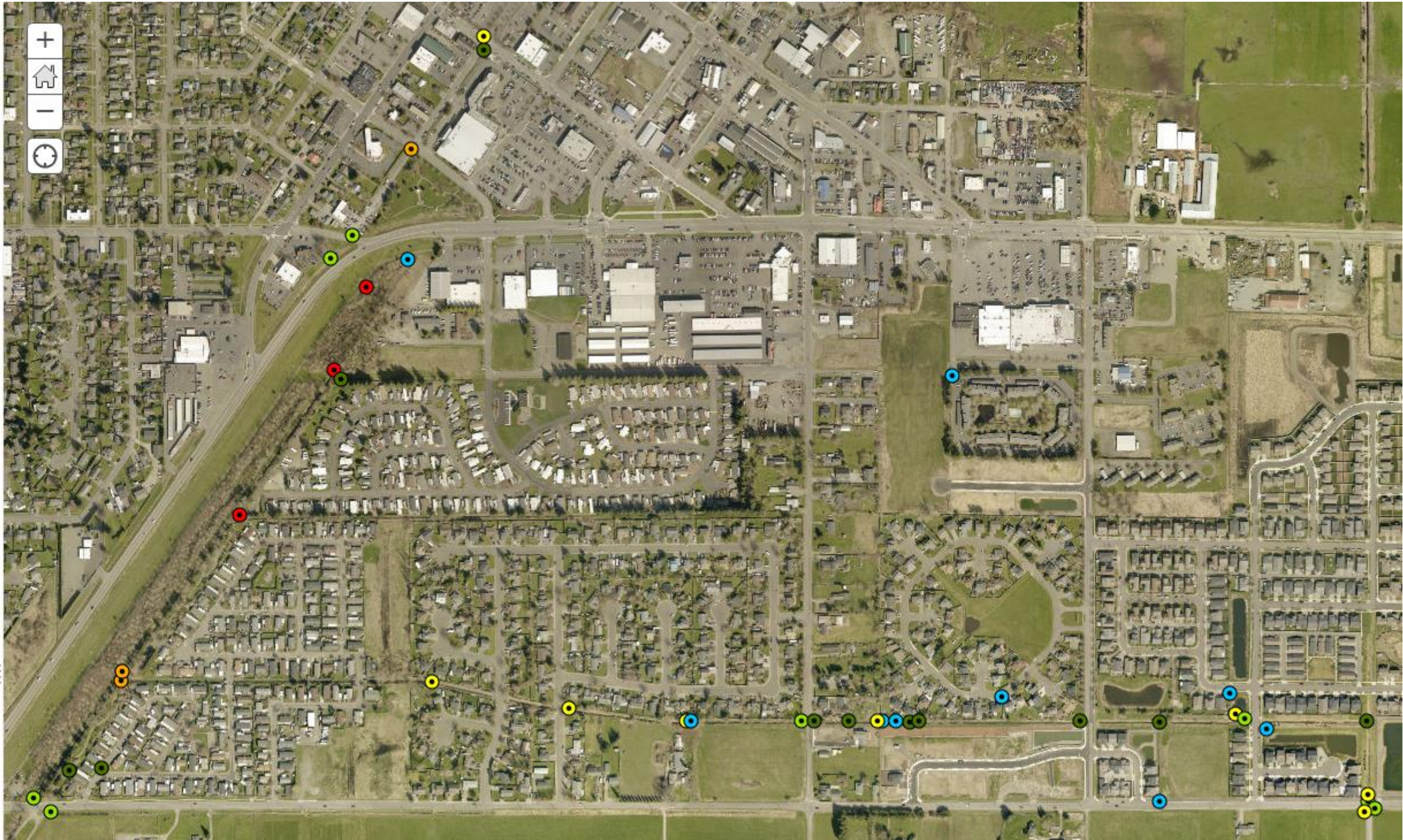
● 51 - 100

● 101 - 410

● 411 - 1000

● > 1000

▲ Not Sampled



SAMPLE ID	Sample Description	Sampled by	Air Temperature (F)	Weather Condition	Last Runoff Event	Flow	Visual Turbidity	Assessment	Storm Result	GP Oil Level	ICPUH1	Additional Observations	Sample Date/Time	Creation Date	Creator	FACILITY/ID	Facility Type	Point X	Point Y
P50001	Cooper Pond Outfall	epalmer	70	sunny	current	active	clear	0	0	0	0	Current Main Source M Lateral A. Birds present in pond	12/20/21 15:45	12/20/21 15:45	apalmer@ci.wataplane.wa.us	P50001	CB	-121.984692	-47.198602
P500101	Cooper Pond Outfall	epalmer	55	rain	current	active	clear	600	0	0	0	Medium Flow - First Flush	9/24/20 15:19	9/24/20 15:19	apalmer@ci.wataplane.wa.us	P500101	CB	-121.985068	-47.198679
P500105	Cooper Pond Outfall	epalmer	65	partlySunny	L7week	active	clear	0	0	0	0		9/30/20 16:30	9/30/20 16:30	apalmer@ci.wataplane.wa.us	P500105	CB	-121.985003	-47.1990463
P500118	Cooper Pond Outfall	epalmer	55	sunny	24week	active	clear	0	0	0	0	Active Flow	10/15/20 14:31	10/15/20 14:31	apalmer@ci.wataplane.wa.us	P500118	CB	-121.986354	-47.2008564
P500144	Noble Fir Car Type 2 CB	seasonalStaff	55	sunny	G7week	stagnant	slightlyTurbid	50	0	0	0		7/22/21 15:21	7/22/21 15:21	apalmer@ci.wataplane.wa.us	P500144	CB	-121.997444	-47.1924148
P500160	Grand Fir CB	seasonalStaff	55	sunny	L7week	stagnant	clear	100	0	0	0		10/28/20 15:25	10/28/20 15:25	apalmer@ci.wataplane.wa.us	P500160	CB	-121.993764	-47.1964240
P500199	2nd Maple Street Mobile Home Park CB	seasonalStaff	55	partlySunny	L7week	active	clear	0	0	0	0		10/28/20 20:45	10/28/20 20:45	apalmer@ci.wataplane.wa.us	P500199	CB	-121.993136	-47.196342
P500200	Mobile Home Outfall	seasonalStaff	55	partlySunny	L7week	active	clear	0	0	0	0		10/28/20 20:45	10/28/20 20:45	apalmer@ci.wataplane.wa.us	P500200	CB	-121.993232	-47.1960477
P500201	Sampled at Mobile Home Outfall	epalmer	55	partlySunny	L7week	active	clear	0	0	0	0		10/28/20 20:30	10/28/20 20:30	apalmer@ci.wataplane.wa.us	P500201	CB	-121.993638	-47.1960524
P500206	Cooper Pond Outfall	epalmer	41	cloudy	G7week	active	clear	10	0	0	0	Active Flow	3/18/21 15:34	3/18/21 15:35	apalmer@ci.wataplane.wa.us	P500206	CB	-121.988916	-47.1966401
P500209	Sampled at Mobile Home Outfall	epalmer	55	sunny	L7week	active	clear	0	0	0	0		10/28/20 20:15	10/28/20 20:15	apalmer@ci.wataplane.wa.us	P500209	CB	-121.987414	-47.1960371
P500214	Redwood street CB	seasonalStaff	55	partlySunny	L7week	active	clear	0	0	0	0		10/28/20 20:45	10/28/20 20:45	apalmer@ci.wataplane.wa.us	P500214	CB	-121.992686	-47.1947153
P500243	Cooper Pond Outfall	epalmer	50	sunny	24week	active	clear	10	0	0	0	None	6/17/21 14:55	6/17/21 14:56	apalmer@ci.wataplane.wa.us	P500243	CB	-121.978871	-47.196368
P500253	Cooper Pond Outfall	epalmer	55	sunny	G7week	active	clear	0	0	0	0		7/22/21 16:12	7/22/21 16:12	apalmer@ci.wataplane.wa.us	P500253	CB	-121.979274	-47.1970174
P5001242	CB bubbler	epalmer	59	rain	current	active	clear	0	3800	None	0		11/15/21 22:29	11/15/21 14:40	apalmer@ci.wataplane.wa.us	P5001242	CB	-122.005578	-47.2137818
P5001485	Water Outfall Follow Up	epalmer	54	mostlyCloudy	L7week	active	clear	100	0	0	0		2/28/22 21:05	2/28/22 21:05	apalmer@ci.wataplane.wa.us	P5001485	CB	-122.005462	-47.2137765
P5001242	CB February Storm Bubbler	epalmer	54	sunny	current	active	clear	0	3200	0	0		2/28/22 21:03	2/28/22 21:06	apalmer@ci.wataplane.wa.us	P5001242	CB	-122.005462	-47.2137765
P5001325	Division/ Roosevelt Catchbasin	epalmer	41	rain	24week	active	clear	80	0	0	0	Good Flow, trash around and in ditch. Baffle #3 Used.	10/15/20 13:56	10/15/20 16:20	apalmer@ci.wataplane.wa.us	P5001325	CB	-121.994406	-47.1994471
P5001485	Water Outfall towards Lateral A	epalmer	42	cloudy	0	active	clear	0	0	0	0		1/20/21 16:41	1/20/21 16:41	apalmer@ci.wataplane.wa.us	P5001485	CB	-121.978358	-47.1922041
P5001485	Water Outfall towards Lateral A	epalmer	42	cloudy	0	active	clear	0	0	0	0	Good Flow, sun surrounding the outlet pipe. Trash still in ditch	2/18/21 15:51	2/18/21 15:51	apalmer@ci.wataplane.wa.us	P5001485	outfall	-121.978358	-47.1922041
P5001485	Water Outfall towards Lateral A	epalmer	41	cloudy	0	active	clear	0	0	0	0		3/18/21 15:20	3/18/21 15:20	apalmer@ci.wataplane.wa.us	P5001485	outfall	-121.978358	-47.1922041
P5001485	Water Outfall towards Lateral A	epalmer	46	sunny	L7week	stagnant	clear	50	0	0	0	low amount stagnant. Used Bottle #8	4/15/21 15:11	4/15/21 15:11	apalmer@ci.wataplane.wa.us	P5001485	outfall	-121.978358	-47.1922041
P5001485	Water Outfall towards Lateral A	epalmer	46	rain	current	active	clear	300	0	0	0	fant measure still	5/20/21 15:11	5/20/21 15:11	apalmer@ci.wataplane.wa.us	P5001485	outfall	-121.978358	-47.1922041
P5001485	Water Outfall towards Lateral A	epalmer	50	sunny	24week	active	clear	30	0	0	0		6/17/21 15:01	6/17/21 15:01	apalmer@ci.wataplane.wa.us	P5001485	outfall	-121.978358	-47.1922041
P5001485	Water Outfall towards Lateral A	epalmer	59	rain	current	active	clear	0	1420	None	0		11/15/21 22:38	11/15/21 14:38	apalmer@ci.wataplane.wa.us	P5001485	outfall	-121.978358	-47.1922041
P5001485	Water Outfall towards Lateral A	epalmer	54	partlySunny	L7week	active	clear	80	0	0	0		11/18/21 16:18	11/18/21 16:18	apalmer@ci.wataplane.wa.us	P5001485	outfall	-121.978358	-47.1922041
P5001485	Water Outfall towards Lateral A	epalmer	38	mostlyCloudy	L7week	active	clear	20	0	0	0		12/16/21 16:45	12/16/21 16:44	apalmer@ci.wataplane.wa.us	P5001485	outfall	-121.978358	-47.1922041
P5001485	Water Outfall towards Lateral A	epalmer	49	rain	current	active	clear	780	0	0	0	Active Flow, Trash around outlet	1/20/22 15:53	1/20/22 15:53	apalmer@ci.wataplane.wa.us	P5001485	outfall	-121.978358	-47.1922041
P5001485	Water Outfall towards Lateral A	epalmer	49	rain	current	active	clear	780	0	0	0	Active Flow, Trash around outlet	1/20/22 15:53	1/20/22 15:53	apalmer@ci.wataplane.wa.us	P5001485	outfall	-121.978358	-47.1922041
P5001485	Water Outfall towards Lateral A	epalmer	49	rain	current	active	clear	780	0	0	0	Active Flow, Trash around outlet	1/20/22 15:53	1/20/22 15:53	apalmer@ci.wataplane.wa.us	P5001485	outfall	-121.978358	-47.1922041
P5001485	Water Outfall towards Lateral A	epalmer	46	cloudy	L7week	active	clear	0	0	0	0	Barley active flow	2/17/22 16:08	2/17/22 16:08	apalmer@ci.wataplane.wa.us	P5001485	CB	-122.001436	-47.1921286
P5001485	Water Outfall towards Lateral A	epalmer	46	cloudy	L7week	active	clear	0	0	0	0	Barley active flow	2/17/22 16:08	2/17/22 16:08	apalmer@ci.wataplane.wa.us	P5001485	CB	-122.001436	-47.1921286
P5001485	Water Outfall towards Lateral A	epalmer	54	rain	current	active	modTurbid	20	0	0	0	Active Flow	2/28/22 16:14	2/28/22 16:14	apalmer@ci.wataplane.wa.us	P5001485	outfall	-121.978358	-47.1922028
P5001485	Water Outfall towards Lateral A	epalmer	54	rain	current	active	modTurbid	20	0	0	0	Active Flow	2/28/22 16:14	2/28/22 16:14	apalmer@ci.wataplane.wa.us	P5001485	outfall	-121.978358	-47.1922028
P5001485	Water Outfall follow up testing	epalmer	54	rain	current	active	modTurbid	20	0	0	0	Active Flow	2/28/22 16:14	2/28/22 16:14	apalmer@ci.wataplane.wa.us	P5001485	outfall	-121.978358	-47.1922028
P5001485	Water Outfall follow up testing	epalmer	54	rain	current	active	modTurbid	20	0	0	0	Active Flow	2/28/22 16:14	2/28/22 16:14	apalmer@ci.wataplane.wa.us	P5001485	outfall	-121.978358	-47.1922028
P5001485	Water Outfall towards Lateral A	epalmer	43	cloudy	24week	active	clear	80	0	0	0	Active Flow	3/17/22 15:02	3/17/22 15:02	apalmer@ci.wataplane.wa.us	P5001485	CB	-122.001436	-47.1921286
P5001485	Water Outfall towards Lateral A	epalmer	43	cloudy	24week	active	clear	80	0	0	0	Active Flow	3/17/22 15:02	3/17/22 15:02	apalmer@ci.wataplane.wa.us	P5001485	CB	-122.001436	-47.1921286
P5001485	Water Outfall towards Lateral A	epalmer	45	rain	L7week	active	clear	140	0	0	0	Active Flow	4/21/22 15:05	4/21/22 15:05	apalmer@ci.wataplane.wa.us	P5001485	CB	-122.001436	-47.1921286
P5001485	Water Outfall towards Lateral A	epalmer	45	rain	L7week	active	clear	140	0	0	0	Active Flow	4/21/22 15:05	4/21/22 15:05	apalmer@ci.wataplane.wa.us	P5001485	CB	-122.001436	-47.1921286
P5001485	Water Outfall towards Lateral A	epalmer	42	rain	L7week	active	clear	280	0	0	0	Active Flow	5/19/22 14:41	5/19/22 14:41	apalmer@ci.wataplane.wa.us	P5001485	CB	-122.001436	-47.1921286
P5001485	Water Outfall towards Lateral A	epalmer	42	rain	L7week	active	clear	280	0	0	0	Active Flow	5/19/22 14:41	5/19/22 14:41	apalmer@ci.wataplane.wa.us	P5001485	CB	-122.001436	-47.1921286
P5001485	Water Outfall towards Lateral A	epalmer	42	rain	L7week	active	clear	280	0	0	0	Active Flow	5/19/22 14:41	5/19/22 14:41	apalmer@ci.wataplane.wa.us	P5001485	CB	-122.001436	-47.1921286
P5001485	Water Outfall towards Lateral A	epalmer	42	rain	L7week	active	clear	280	0	0	0	Active Flow	5/19/22 14:41	5/19/22 14:41	apalmer@ci.wataplane.wa.us	P5001485	CB	-122.001436	-47.1921286
P5001485	Water Outfall towards Lateral A	epalmer	42	rain	L7week	active	clear	280	0	0	0	Active Flow	5/19/22 14:41	5/19/22 14:41	apalmer@ci.wataplane.wa.us	P5001485	CB	-122.001436	-47.1921286
P5001485	Water Outfall towards Lateral A	epalmer	42	rain	L7week	active	clear	280	0	0	0	Active Flow	5/19/22 14:41	5/19/22 14:41	apalmer@ci.wataplane.wa.us	P5001485	CB	-122.001436	-47.1921286
P5001485	Water Outfall towards Lateral A	epalmer	42	rain	L7week	active	clear	280	0	0	0	Active Flow	5/19/22 14:41	5/19/22 14:41	apalmer@ci.wataplane.wa.us	P5001485	CB	-122.001436	-47.1921286
P5001485	Water Outfall towards Lateral A	epalmer	42	rain	L7week	active	clear	280	0	0	0	Active Flow	5/19/22 14:41	5/19/22 14:41	apalmer@ci.wataplane.wa.us	P5001485	CB	-122.001436	-47.1921286
P5001485	Water Outfall towards Lateral A	epalmer	42	rain	L7week	active	clear	280	0	0	0	Active Flow	5/19/22 14:41	5/19/22 14:41	apalmer@ci.wataplane.wa.us	P5001485	CB	-122.001436	-47.1921286
P5001485	Water Outfall towards Lateral A	epalmer	42	rain	L7week	active	clear	280	0	0	0	Active Flow	5/19/22 14:41	5/19/22 14:41	apalmer@ci.wataplane.wa.us	P5001485	CB	-122.001436	-47.1921286
P5001485	Water Outfall towards Lateral A	epalmer	42	rain	L7week	active	clear	280	0	0	0	Active Flow	5/19/22 14:41	5/19/22 14:41	apalmer@ci.wataplane.wa.us	P5001485	CB	-122.001436	-47.1921286
P5001485	Water Outfall towards Lateral A	epalmer	42	rain	L7week	active	clear	280	0	0	0	Active Flow	5/19/22 14:41	5/19/22 14:41	apalmer@ci.wataplane.wa.us	P5001485	CB	-122.001436	-47.1921286
P5001485	Water Outfall towards Lateral A	epalmer	42	rain	L7week	active	clear	280	0	0	0	Active Flow	5/19/22 14:41	5/19/22 14:41	apalmer@ci.wataplane.wa.us	P5001485	CB	-122.001436	-47.1921286
P5001485	Water Outfall towards Lateral A	epalmer	42	rain	L7week	active	clear	280	0	0	0	Active Flow	5/19/22 14:41	5/19/22 14:41	apalmer@ci.wataplane.wa.us	P5001485	CB	-122.001436	-47.1921286
P5001485	Water Outfall towards Lateral A	epalmer	42	rain	L7week	active	clear	280	0	0	0	Active Flow	5/19/22 14:41	5/19/22 14:41	apalmer@ci.wataplane.wa.us	P5001485	CB	-122.001436	-47.1921286
P5001485	Water Outfall towards Lateral A	epalmer	42	rain	L7week	active	clear	280	0	0	0	Active Flow	5/19/22 14:41	5/19/22 14:41	apalmer@ci.wataplane.wa.us	P5001485	CB	-122.001436	-47.1921286
P5001485	Water Outfall towards Lateral A	epalmer	42	rain	L7week	active	clear	280	0	0	0	Active Flow	5/19/22 14:41	5/19/22 14:41	apalmer@ci.wataplane.wa.us	P5001485	CB	-122.001436	-47.1921286
P5001485	Water Outfall towards Lateral A	epalmer	42	rain	L7week	active	clear	280	0	0	0	Active Flow	5/19/22 14:41	5/19/22 14:41	apalmer@ci.wataplane.wa.us	P5001485	CB	-122.001436	-47.1921286
P5001485	Water Outfall towards Lateral A	epalmer	42	rain	L7week	active	clear	280	0	0	0	Active Flow	5/19/22 14:41	5/19/22 14:41	apalmer@ci.wataplane.wa.us	P5001485	CB	-122.001436	-47.1921286
P5001485	Water Outfall towards Lateral A	epalmer	42	rain	L7week	active	clear	280	0	0	0	Active Flow	5/19/22 14:41	5/19/22 14:41	apalmer@ci.wataplane.wa.us	P5001485	CB	-122.001436	-47.1921286
P5001485	Water Outfall towards Lateral A	epalmer	42	rain	L7week	active	clear	280	0	0	0	Active Flow							

PS04161	Lateral A Outfall	45 cloudy	L7week	active	clear	90	Active flow	21/12/22 15:34	21/12/22 15:34	ep@nrm.gov.au	PS04161	ditch	47	121.907608	47.1836157
PS04161	Lateral A Outfall	42	L7week	active	clear	45	Active flow	21/12/22 15:34	21/12/22 15:34	ep@nrm.gov.au	PS04161	ditch	47	121.907608	47.1836157
PS04161	Lateral A Outfall	43 cloudy	264b8	active	clear	0	Active Flow, no smells	31/12/22 14:40	31/12/22 14:40	ch@nrm.gov.au	PS04161	ditch	47	121.907608	47.1836157
PS04161	Lateral A Outfall	45 ran	L724	active	clear	110		4/12/22 14:34	4/12/22 14:34	ep@nrm.gov.au	PS04161	ditch	47	121.907608	47.1836157
PS04161	Lateral A Outfall	42	rain	active	0	0	Active Flow	9/18/22 14:16	9/18/22 14:16	ch@nrm.gov.au	PS04161	ditch	47	121.907608	47.1836157
PS04161	Lateral A Outfall	50 ran	L724	active	clear	330	Good Flow	6/16/22 14:04	6/16/22 14:04	ch@nrm.gov.au	PS04161	ditch	47	121.907608	47.1836157
PS04161	Lateral A Outfall	64 sunny	L7week	active	clear	100	Coliform count < 100 CFU/100ml. Hu-2-Bact. Null	7/22/22 14:22	7/22/22 14:22	ch@nrm.gov.au	PS04161	ditch	47	121.907608	47.1836157
PS04161	Lateral A Outfall	68 sunny	G7week	active	clear	260	Active Flow	7/21/22 14:22	7/21/22 14:22	ch@nrm.gov.au	PS04161	ditch	47	121.907608	47.1836157
PS04161	Lateral A Outfall	70 cloudy	G7week	active	clear	260	Low flow but still higher in the	8/18/22 14:33	8/18/22 14:34	ep@nrm.gov.au	PS04161	ditch	47	121.907608	47.1836157
PS04161	Lateral A Outfall	74 sunny	L7week	active	clear	280	Coliform count < 80 CFU/100ml-Hu-2-Bacteria testing. Hu-2 is MDL (MDL = 1 + copies)	8/31/22 17:50	8/31/22 17:50	ch@nrm.gov.au	PS04161	ditch	47	121.907608	47.1836157
PS04161	Lateral A Outfall	55 cloudy	G7week	active	clear	40	Low flow but active	9/22/22 15:07	9/22/22 15:07	ep@nrm.gov.au	PS04161	ditch	47	121.907608	47.1836157
PS04161	Lateral A Outfall	45 partlySunny	G7week	active	clear	60	Low flow	10/20/22 15:09	10/20/22 15:09	ep@nrm.gov.au	PS04161	ditch	47	121.907608	47.1836157
PS04161	Lateral A Outfall	44 partlySunny	G7week	active	clear	0	Active Flow	11/17/22 15:44	11/17/22 15:44	ep@nrm.gov.au	PS04161	ditch	47	121.907608	47.1836157
PS04161	Lateral A Outfall	5 partlySunny	264b8	active	clear	140	Active Flow	12/22/22 15:59	12/22/22 15:59	ch@nrm.gov.au	PS04161	ditch	47	121.907608	47.1836157
PS04161	Lateral A Outfall	38 mostlyCloudy	L724	active	0	0	Active Flow	11/8/22 16:05	11/8/22 16:05	ch@nrm.gov.au	PS04161	ditch	47	121.907608	47.1836157
PS04161	Lateral A Outfall	24 partlySunny	264b8	active	clear	0	Active Flow	2/23/22 15:45	2/23/22 15:45	ch@nrm.gov.au	PS04161	ditch	47	121.907608	47.1836157
PS04161	Lateral A Outfall	44 mostlyCloudy	L724	active	clear	0	Active Flow	3/23/22 15:43	3/23/22 15:43	ch@nrm.gov.au	PS04161	ditch	47	121.907608	47.1836157
PS04161	Lateral A Outfall	42 cloudy	L724	active	clear	20	Active Flow	4/20/22 14:22	4/20/22 14:22	ep@nrm.gov.au	PS04161	ditch	47	121.907608	47.1836157
PS04161	Lateral A Outfall	54 partlySunny	G7week	active	clear	740	Active Flow	5/25/22 14:32	5/25/22 14:32	ep@nrm.gov.au	PS04161	ditch	47	121.907608	47.1836157
PS04161	Lateral A Outfall	50 partlySunny	264b8	active	clear	160	Active Flow	6/22/22 14:50	6/22/22 14:50	ep@nrm.gov.au	PS04161	ditch	47	121.907608	47.1836157
PS04161	Lateral A Outfall	59 sunny	G7week	active	clear	0	Active low flow	7/20/23 13:49	7/20/23 13:51	ch@nrm.gov.au	PS04161	ditch	47	121.907608	47.1836157
PS04161	Lateral A Outfall	70 sunny	G7week	active	clear	20	Active Flow	8/17/22 14:15	8/17/22 14:15	ch@nrm.gov.au	PS04161	ditch	47	121.907608	47.1836157
PS04161	Lateral A Outfall	68 sunny	L7week	active	clear	0	86 Active very low flow. Sampling with Kiri Count. Hu-2-bacterioids results Non	8/6/22 14:35	8/7/22 14:35	ep@nrm.gov.au	PS04161	ditch	47	121.907608	47.1836157
PS04161	Lateral A Outfall	49 sunny	L724	active	clear	70	Active low flow	9/21/22 14:14	9/21/22 14:14	ep@nrm.gov.au	PS04161	ditch	47	121.907608	47.1836157
PS04161	Lateral A Outfall	52 sunny	264b8	active	clear	0	Active Flow	10/18/22 14:19	10/18/22 14:19	ch@nrm.gov.au	PS04161	ditch	47	121.907608	47.1836157
PS04161	Lateral A Outfall	32 sunny	L724	active	clear	70	Active Flow	11/16/22 15:32	11/16/22 15:32	ep@nrm.gov.au	PS04161	ditch	47	121.907608	47.1836157
PS04161	Lateral A Outfall	39 partlySunny	264b8	active	clear	0	Active Flow	12/21/22 15:52	12/21/22 15:52	ch@nrm.gov.au	PS04161	ditch	47	121.907608	47.1836157
PS04162	Flume flow upstream of lat A	52 ran	current	clear	clear	120	Active Flow	1/23/20 15:50	8/10/20 17:21	th@nrm.gov.au	PS04162	ditch	47	121.907608	47.1836157
PS04162	Main Flume upstream lat A	38 sunny	L7week	active	clear	500	Active Flow	2/20/20 15:59	8/10/20 17:21	th@nrm.gov.au	PS04162	ditch	47	121.907608	47.1836157
PS04162	Main Flume Upstream of Lat A	30 sunny	L7week	active	clear	600	Active Flow	8/10/20 17:21	8/10/20 17:21	th@nrm.gov.au	PS04162	ditch	47	121.907608	47.1836157
PS04162	Main Flume Upstream of Lat A	45 ran	current	active	clear	620	Active Flow	4/23/20 15:17	8/10/20 17:21	th@nrm.gov.au	PS04162	ditch	47	121.907608	47.1836157
PS04162	Main Flume Upstream of Lat A	50 cloudy	L7week	active	clear	100	Active Flow	5/21/20 15:04	8/10/20 17:21	th@nrm.gov.au	PS04162	ditch	47	121.907608	47.1836157
PS04162	Main Flume Upstream of Lat A	60 sunny	L7week	active	clear	300	Active Flow	6/18/20 15:30	8/10/20 17:21	th@nrm.gov.au	PS04162	ditch	47	121.907608	47.1836157
PS04162	Main Flume Upstream of Lat A	60 sunny	G7week	stagnant	clear	2800	Stagnant. Flow. No observable flow in outfalls upstream	7/30/20 15:14	8/10/20 17:21	th@nrm.gov.au	PS04162	ditch	47	121.907608	47.1836157
PS04162	Main Flume Upstream of Lat A	65 sunny	G7week	stagnant	clear	1310	Low flow	9/21/20 15:08	8/10/20 17:21	th@nrm.gov.au	PS04162	ditch	47	121.907608	47.1836157
PS04162	Main Flume Upstream of Lat A	55 ran	current	active	clear	0	low-medium flow. Test Results May be in Error	9/24/20 14:50	9/24/20 14:50	ep@nrm.gov.au	PS04162	ditch	47	121.907608	47.1836157
PS04162	Main Flume Upstream of Lat A	50 sunny	264b8	active	clear	0	Active Flow	10/15/20 15:15	8/10/20 17:21	th@nrm.gov.au	PS04162	ditch	47	121.907608	47.1836157
PS04162	Main Flume Upstream of Lat A	40 sunny	L724	active	clear	340	Medium Flow	10/22/20 14:38	8/10/20 17:21	th@nrm.gov.au	PS04162	ditch	47	121.907608	47.1836157
PS04162	Main Flume Upstream of Lat A	50 ran	L724	active	slightlyTurbid	750	human genetic material Hu-2-bac could not be detected	11/5/20 21:00	11/5/20 21:00	ch@nrm.gov.au	PS04162	ditch	47	121.907608	47.1836157
PS04162	Main Flume Upstream of Lat A	39 partlySunny	264b8	active	clear	330	Medium Flow. Test Results May be in Error	11/8/20 16:05	11/8/20 16:40	ch@nrm.gov.au	PS04162	ditch	47	121.907608	47.1836157
PS04162	Main Flume Upstream of Lat A	41 cloudy	L724	active	clear	170	None	12/10/20 16:30	12/10/20 16:39	ch@nrm.gov.au	PS04162	ditch	47	121.907608	47.1836157
PS04162	Main Flume Upstream of Lat A	42 cloudy	264b8	active	clear	130	Bottle #12 used no debris	1/21/21 15:18	2/18/21 15:23	ch@nrm.gov.au	PS04162	ditch	47	121.907608	47.1836157
PS04162	Main Flume Upstream of Lat A	39 cloudy	264b8	active	clear	0	Active flow, water coming out of ditch side	2/18/21 15:15	3/18/21 13:59	ch@nrm.gov.au	PS04162	ditch	47	121.907608	47.1836157
PS04162	Main Flume Upstream of Lat A	41 cloudy	G7week	active	clear	0	38 Active flow around a debrisly situated Watling on Results of Hu-2-Bac and R	3/18/21 14:54	3/18/21 14:54	ep@nrm.gov.au	PS04162	ditch	47	121.907608	47.1836157
PS04162	Main Flume Upstream of Lat A	45 sunny	L7week	active	clear	20	low flow	4/15/21 14:26	4/15/21 14:26	ch@nrm.gov.au	PS04162	ditch	47	121.907608	47.1836157
PS04162	Main Flume Upstream of Lat A	46 ran	current	active	0	0	Active Flow	5/22/21 14:39	6/17/21 14:21	ep@nrm.gov.au	PS04162	ditch	47	121.907608	47.1836157
PS04162	Main Flume Upstream of Lat A	50 sunny	L7week	active	clear	290	Active Flow, nothing else to present	6/17/21 14:21	6/17/21 14:21	ep@nrm.gov.au	PS04162	ditch	47	121.907608	47.1836157
PS04162	Main Flume Upstream of Lat A	55 sunny	G7week	active	clear	250	Active but very low flow	7/22/21 15:08	7/22/21 15:08	ep@nrm.gov.au	PS04162	ditch	47	121.907608	47.1836157
PS04162	Main Flume Upstream of Lat A	54 cloudy	G7week	active	clear	860	Active Flow	8/18/21 17:48	9/23/21 15:11	ep@nrm.gov.au	PS04162	ditch	47	121.907608	47.1836157
PS04162	Main Flume Upstream of Lat A	65 sunny	L7week	active	clear	860	Active low flow	9/23/21 15:11	10/14/21 14:58	ch@nrm.gov.au	PS04162	ditch	47	121.907608	47.1836157
PS04162	Main Flume Upstream of Lat A	60 mostlyCloudy	L724	active	clear	950	Active flow mini debris both up and downstream	10/14/21 14:58	11/18/21 15:29	ep@nrm.gov.au	PS04162	ditch	47	121.907608	47.1836157
PS04162	Main Flume Upstream of Lat A	40 partlySunny	L7week	active	clear	80	Active Flow	11/18/21 15:29	12/16/21 14:55	ch@nrm.gov.au	PS04162	ditch	47	121.907608	47.1836157
PS04162	Main Flume Upstream of Lat A	38 ran	L724	active	clear	60	Active Flow	12/16/21 14:55	12/16/21 16:07	ch@nrm.gov.au	PS04162	ditch	47	121.907608	47.1836157
PS04162	Main Flume Upstream of Lat A	49 sunny	current	active	clear	170	Active Flow	1/20/22 15:35	1/20/22 15:35	ep@nrm.gov.au	PS04162	ditch	47	121.907608	47.1836157
PS04162	Main Flume Upstream of Lat A	49 ran	current	active	slightlyTurbid	170	Active Flow	1/20/22 15:35	1/20/22 15:35	ep@nrm.gov.au	PS04162	ditch	47	121.907608	47.1836157
PS04162	Main Flume Upstream of Lat A	45 cloudy	L7week	active	clear	80	Active Flow	2/17/22 15:33	2/17/22 15:33	ch@nrm.gov.au	PS04162	ditch	47	121.907608	47.1836157
PS04162	Main Flume Upstream of Lat A	45 cloudy	L7week	active	clear	80	Active Flow	2/17/22 15:33	2/17/22 15:33	ch@nrm.gov.au	PS04162	ditch	47	121.907608	47.1836157
PS04162	Main Flume Upstream of Lat A	43 cloudy	264b8	active	clear	110	Active Flow	3/17/22 14:40	3/17/22 14:40	ch@nrm.gov.au	PS04162	ditch	47	121.907608	47.1836157
PS04162	Main Flume Upstream of Lat A	45 ran	L724	active	clear	370	Active Flow	4/21/22 14:34	5/19/22 14:16	ep@nrm.gov.au	PS04162	ditch	47	121.907608	47.1836157
PS04162	Main Flume Upstream of Lat A	42 ran	current	active	clear	50	Active Flow	5/19/22 14:16	6/16/22 14:50	ep@nrm.gov.au	PS04162	ditch	47	121.907608	47.1836157
PS04162	Main Flume Upstream of Lat A	50 sunny	L724	active	clear	250	Active Flow	6/16/22 14:50	7/22/22 16:06	ch@nrm.gov.au	PS04162	ditch	47	121.907608	47.1836157
PS04162	Main Flume Upstream of Lat A	64 partlySunny	G7week	active	clear	2600	Very Low Flow. Coliscan 1380 cfu/100ml. Hu-2-Bact. Null	7/20/22 18:00	7/22/22 14:23	ch@nrm.gov.au	PS04162	ditch	47	121.907608	47.1836157
PS04162	Main Flume Upstream of Lat A	58 sunny	G7week	active	clear	1530	Low Flow	7/21/22 14:23	8/18/22 14:34	ep@nrm.gov.au	PS04162	ditch	47	121.907608	47.1836157
PS04162	Main Flume Upstream of Lat A	65 cloudy	G7week	active	clear	1600	Active Flow	8/18/22 14:34	8/18/22 14:34	ep@nrm.gov.au	PS04162	ditch	47	121.907608	47.1836157
PS04162	Main Flume Upstream of Lat A	74 sunny	G7week	active	clear	1800	Coliform -480 cfu/100ml. Hu-2-Bacteria Testing is MDL (MDL = 1 + copies)	8/31/22 17:53	8/31/22 17:53	ch@nrm.gov.au	PS04162	ditch	47	121.907608	47.1836157
PS04162	Main Flume Upstream of Lat A	70 sunny	G7week	active	clear	280	Low flow if not just starting	9/22/22 15:08	9/22/22 15:08	ep@nrm.gov.au	PS04162	ditch	47	121.907608	47.1836157
PS04162	Main Flume Upstream of Lat A	46 partlySunny	L724	active	stagnant	180	Low flow of 100mL backflow from Lateral A. Upstream in Main Flume was no flow	10/22/22 15:08	11/17/22 15:45	ep@nrm.gov.au	PS04162	ditch	47	121.907608	47.1836157
PS04162	Main Flume Upstream of Lat A	44 partlySunny	G7week	stagnant	clear	190	Leaves/debris with recent wind and clear	12/22/22 15:45	1/19/23 16:06	ch@nrm.gov.au	PS04162	ditch	47	121.907608	47.1836157
PS04162	Main Flume Upstream of Lat A	38 mostlyCloudy	L724	active	clear	30	Sub surface flow underneath top surface	1/19/23 16:06	1/19/23 16:07	ch@nrm.gov.au	PS04162	ditch	47	121.907608	47.1836157
PS04162	Main Flume Upstream of Lat A	24 partlySunny	L724	active	clear	30	Active Flow Tree/debris in ditch upstream	2/23/22 15:51	3/23/22 15:44	ep@nrm.gov.au	PS04162	ditch	47	121.907608	47.1836157
PS04162	Main Flume Upstream of Lat A	44 mostlyCloudy	L724	active	clear										

PS04165	Lateral A at Blake Street	42	cloudy	24048	active	clear	140	0	Good flow	21/821 15:30	21/821 15:34	dichromy@ci.enimc.wa.us	PS04165	ditch	-121.984437	47.19314542
PS04165	Lateral A at Blake Street	41	cloudy	24048	active	clear	0	3	Active Flow	21/821 15:30	21/821 15:39	dichromy@ci.enimc.wa.us	PS04165	ditch	-121.984437	47.19314542
PS04165	Lateral A at Blake Street	45	sunny	L7week	active	clear	0	0	Active Flow male/female ducks downstream	41/521 14:39	41/521 14:39	dichromy@ci.enimc.wa.us	PS04165	ditch	-121.984437	47.19314542
PS04165	Lateral A at Blake Street	46	rain	current	active	clear	0	0	Active Flow	5/2021 14:53	5/2021 14:53	dichromy@ci.enimc.wa.us	PS04165	ditch	-121.984437	47.19314542
PS04165	Lateral A at Blake Street	50	sunny	24048	active	clear	320	0	Active Flow	61/121 14:33	61/121 14:33	dichromy@ci.enimc.wa.us	PS04165	ditch	-121.984437	47.19314542
PS04165	Lateral A at Blake Street	55	sunny	G7week	active	clear	2000	0	Active Flow	7/221 15:46	7/221 15:46	dichromy@ci.enimc.wa.us	PS04165	ditch	-121.984437	47.19314542
PS04165	Lateral A at Blake Street	54	cloudy	G7week	active	clear	50	0	Estimated FC Number, TNT from the number.	81/1921 20:36	81/1921 20:36	dichromy@ci.enimc.wa.us	PS04165	ditch	-121.984437	47.19314542
PS04165	Lateral A West of Blake	65	sunny	L7week	active	clear	2200	0	Active Flow	9/2321 15:21	9/2321 15:21	dichromy@ci.enimc.wa.us	PS04165	ditch	-121.984437	47.19314542
PS04165	Lateral A West of Blake	53	rain	current	active	clear	60	0	Active Flow	9/2721 16:30	9/2721 16:30	dichromy@ci.enimc.wa.us	PS04165	ditch	-121.984437	47.19314542
PS04165	Lateral A West of Blake	58	mostlyCloudy	24048	active	clear	40	0	Active Flow	10/121 17:00	10/121 17:00	dichromy@ci.enimc.wa.us	PS04165	ditch	-121.984437	47.19314542
PS04165	Lateral A West of Blake	59	current	24048	active	clear	320	0	Active Flow	10/121 15:15	10/121 15:11	dichromy@ci.enimc.wa.us	PS04165	ditch	-121.984437	47.19314542
PS04165	Lateral A West of Blake	58	mostlyCloudy	24048	active	clear	0	85	Sample with KC Ecology	11/221 19:30	11/221 19:30	dichromy@ci.enimc.wa.us	PS04165	ditch	-121.984437	47.19314542
PS04165	Lateral A West of Blake	40	partlySunny	L7week	active	clear	100	0	Active Flow	10/1821 15:42	10/1821 15:42	dichromy@ci.enimc.wa.us	PS04165	ditch	-121.984437	47.19314542
PS04165	Lateral A West of Blake	38	rain	current	active	clear	20	0	Active Flow, trash around ditch	12/1621 16:00	12/1621 16:17	dichromy@ci.enimc.wa.us	PS04165	ditch	-121.984437	47.19314542
PS04165	Lateral A West of Blake	49	rain	current	active	clear	30	0	Active Flow	12/2022 15:43	12/2022 15:43	dichromy@ci.enimc.wa.us	PS04165	ditch	-121.984437	47.19314542
PS04165	Lateral A West of Blake	49	rain	current	active	clear	320	0	Active Flow	12/2022 15:43	12/2022 15:43	dichromy@ci.enimc.wa.us	PS04165	ditch	-121.984363	47.19313663
PS04165	Lateral A West of Blake	45	cloudy	L7week	active	clear	50	0	Active Flow	21/172 15:46	21/172 15:46	dichromy@ci.enimc.wa.us	PS04165	ditch	-121.984363	47.19313663
PS04165	Lateral A West of Blake	45	cloudy	24048	active	clear	60	0	Active Flow	31/172 14:50	31/172 14:50	dichromy@ci.enimc.wa.us	PS04165	ditch	-121.984363	47.19313663
PS04165	Lateral A West of Blake	45	rain	L724	active	clear	0	0	Active Flow	4/2122 14:47	4/2122 14:47	dichromy@ci.enimc.wa.us	PS04165	ditch	-121.984363	47.19313663
PS04165	Lateral A West of Blake	42	rain	current	active	clear	0	0	Active Flow	5/1922 14:26	5/1922 14:26	dichromy@ci.enimc.wa.us	PS04165	ditch	-121.984363	47.19313663
PS04165	Lateral A West of Blake	50	mostlyCloudy	24048	active	clear	80	0	Active Flow	61/1622 14:15	61/1622 14:15	dichromy@ci.enimc.wa.us	PS04165	ditch	-121.984363	47.19313663
PS04165	Lateral A West of Blake	64	sunny	G7week	active	clear	0	410	Low Flow, Coliscan 140 CPU100ml, Hu-2-Bac Null	7/2022 17:45	7/2022 16:05	dichromy@ci.enimc.wa.us	PS04165	ditch	-121.984363	47.19313663
PS04165	Lateral A West of Blake	58	sunny	G7week	active	clear	180	0	Active Flow	7/2122 14:32	7/2122 14:32	dichromy@ci.enimc.wa.us	PS04165	ditch	-121.984363	47.19313663
PS04165	Lateral A West of Blake	70	sunny	G7week	active	clear	60	0	Active Flow	81/1822 14:52	81/1822 14:52	dichromy@ci.enimc.wa.us	PS04165	ditch	-121.984363	47.19313663
PS04165	Lateral A West of Blake	74	sunny	G7week	active	clear	370	0	Active Flow, life vegetation choke	8/3122 17:39	8/3122 17:39	dichromy@ci.enimc.wa.us	PS04165	ditch	-121.984363	47.19313663
PS04165	Lateral A West of Blake	66	partlySunny	G7week	active	clear	80	0	Active Flow, life vegetation choke	9/2222 15:19	9/2222 15:19	dichromy@ci.enimc.wa.us	PS04165	ditch	-121.984363	47.19313663
PS04165	Lateral A West of Blake	44	partlySunny	G7week	active	clear	30	0	Active Flow, ditch sides moved	10/2222 15:30	10/2222 15:30	dichromy@ci.enimc.wa.us	PS04165	ditch	-121.984363	47.19313663
PS04165	Lateral A West of Blake	5	partlySunny	L724	active	clear	0	0	Ducks were in the sampling area. Flow away as I walked up	11/1722 15:54	11/1722 15:54	dichromy@ci.enimc.wa.us	PS04165	ditch	-121.984363	47.19313663
PS04165	Lateral A West of Blake	38	partlySunny	L724	active	clear	0	0	Active flow some trash in ditch	11/1923 16:20	11/1923 16:20	dichromy@ci.enimc.wa.us	PS04165	ditch	-121.984363	47.19313663
PS04165	Lateral A West of Blake	24	partlySunny	24048	active	clear	0	0	Active Flow	22/232 16:15	22/232 16:15	dichromy@ci.enimc.wa.us	PS04165	ditch	-121.984363	47.19313663
PS04165	Lateral A West of Blake	44	mostlyCloudy	L724	active	clear	0	0	Active Flow	32/232 14:53	32/232 14:53	dichromy@ci.enimc.wa.us	PS04165	ditch	-121.984363	47.19313663
PS04165	Lateral A West of Blake	42	cloudy	L724	active	clear	30	0	Active Flow	4/2023 14:31	4/2023 14:31	dichromy@ci.enimc.wa.us	PS04165	ditch	-121.984363	47.19313663
PS04165	Lateral A West of Blake	54	partlySunny	G7week	active	clear	50	0	Active Flow	5/2923 14:44	5/2923 14:44	dichromy@ci.enimc.wa.us	PS04165	ditch	-121.984363	47.19313663
PS04165	Lateral A West of Blake	50	sunny	24048	active	clear	20	0	Active Flow	6/2223 15:03	6/2223 15:03	dichromy@ci.enimc.wa.us	PS04165	ditch	-121.984363	47.19313663
PS04165	Lateral A West of Blake	52	sunny	G7week	active	clear	0	0	Active Flow	7/2023 14:50	7/2023 14:50	dichromy@ci.enimc.wa.us	PS04165	ditch	-121.984363	47.19313663
PS04165	Lateral A West of Blake	69	sunny	G7week	active	clear	90	0	Active Flow	81/1723 14:55	81/1723 14:55	dichromy@ci.enimc.wa.us	PS04165	ditch	-121.984363	47.19313663
PS04165	Lateral A West of Blake	49	sunny	L724	active	clear	70	0	Active Flow	9/123 14:34	9/123 14:34	dichromy@ci.enimc.wa.us	PS04165	ditch	-121.984363	47.19313663
PS04165	Lateral A West of Blake	52	sunny	L724	active	clear	50	0	Active Flow	10/1823 14:22	10/1823 14:22	dichromy@ci.enimc.wa.us	PS04165	ditch	-121.984363	47.19313663
PS04165	Lateral A West of Blake	52	sunny	24048	active	clear	50	0	Active Flow	11/1623 15:45	11/1623 15:45	dichromy@ci.enimc.wa.us	PS04165	ditch	-121.984363	47.19313663
PS04165	Lateral A West of Blake	39	partlySunny	24048	active	clear	0	0	Active Flow	12/2123 16:01	12/2123 16:01	dichromy@ci.enimc.wa.us	PS04165	ditch	-121.984363	47.19313663
PS04165	Lateral A West of Blake	52	rain	current	active	clear	660	0	Includes recent surface runoff from farms on south side of warner	12/232 16:10	12/232 16:10	dichromy@ci.enimc.wa.us	PS04165	ditch	-121.972001	47.19313676
PS04166	Lateral A West of Watson	38	sunny	L7week	active	slightlyTurbid	0	0	Active Flow	2/2020 16:19	8/1020 17:21	dichromy@ci.enimc.wa.us	PS04166	ditch	-121.972001	47.19313676
PS04166	Lateral A West of Watson	40	sunny	L7week	active	slightlyTurbid	200	0	Active Flow	81/2020 15:54	81/2020 15:54	dichromy@ci.enimc.wa.us	PS04166	ditch	-121.972001	47.19313676
PS04166	Lateral A West of Watson	60	sunny	L7week	active	clear	170	0	Active Flow	81/2020 15:54	81/2020 17:21	dichromy@ci.enimc.wa.us	PS04166	ditch	-121.972001	47.19313676
PS04166	Lateral A West of Watson	60	sunny	L7week	active	clear	170	0	Active Flow	81/2020 15:54	81/2020 17:21	dichromy@ci.enimc.wa.us	PS04166	ditch	-121.972001	47.19313676
PS04166	Lateral A West of Watson	70	sunny	G7week	active	clear	120	0	Low Flow. Lots of ducks present in upstream stormwater ponds	81/2020 15:54	81/2020 15:54	dichromy@ci.enimc.wa.us	PS04166	ditch	-121.972001	47.19313676
PS04166	Lateral A West of Watson	55	rain	current	active	clear	1080	0	Low Flow	8/2020 15:30	8/2020 15:30	dichromy@ci.enimc.wa.us	PS04166	ditch	-121.972001	47.19313676
PS04166	Lateral A West of Watson	65	sunny	current	active	clear	0	0	medium flow - first flush	9/2420 15:08	9/2420 15:08	dichromy@ci.enimc.wa.us	PS04166	ditch	-121.972001	47.19313676
PS04166	Lateral A West of Watson	65	sunny	24048	active	clear	10	0	Good flow, post storm #2	10/1520 14:35	10/1520 16:32	dichromy@ci.enimc.wa.us	PS04166	ditch	-121.972001	47.19313676
PS04166	Lateral A West of Watson	41	cloudy	24048	active	clear	0	0	low-med flow	10/2220 14:53	10/2220 14:53	dichromy@ci.enimc.wa.us	PS04166	ditch	-121.972001	47.19313676
PS04166	Lateral A West of Watson	40	cloudy	L724	active	clear	0	0	Active Flow	11/1920 16:33	11/1920 16:33	dichromy@ci.enimc.wa.us	PS04166	ditch	-121.972001	47.19313676
PS04166	Lateral A West of Watson	39	partlySunny	L724	active	clear	310	0	Active Flow	12/1020 16:45	12/1020 16:45	dichromy@ci.enimc.wa.us	PS04166	ditch	-121.972001	47.19313676
PS04166	Lateral A West of Watson	41	rain	current	active	clear	0	0	Good flow, 10' from top to Water to under crown	12/212 16:31	12/212 16:31	dichromy@ci.enimc.wa.us	PS04166	ditch	-121.972001	47.19313676
PS04166	Lateral A West of Watson	42	cloudy	24048	active	clear	190	0	Active Flow	21/821 15:40	21/821 15:40	dichromy@ci.enimc.wa.us	PS04166	ditch	-121.972001	47.19313676
PS04166	Lateral A West of Watson	41	cloudy	G7week	active	clear	20	0	Active Flow	31/821 15:13	31/821 15:13	dichromy@ci.enimc.wa.us	PS04166	ditch	-121.972001	47.19313676
PS04166	Lateral A West of Watson	46	sunny	L7week	active	clear	140	0	Active flow, no odor nor animals in Ditch	41/521 15:02	41/521 15:02	dichromy@ci.enimc.wa.us	PS04166	ditch	-121.972001	47.19313676
PS04166	Lateral A West of Watson	46	rain	current	active	clear	0	0	high water levels likely due to the aquatic plants in the ditch choking the water c	5/2021 14:59	5/2021 14:59	dichromy@ci.enimc.wa.us	PS04166	ditch	-121.972001	47.19313676
PS04166	Lateral A West of Watson	50	sunny	L7week	active	clear	120	0	None	61/1721 14:46	61/1721 14:46	dichromy@ci.enimc.wa.us	PS04166	ditch	-121.972001	47.19313676
PS04166	Lateral A West of Watson	55	sunny	G7week	active	clear	450	0	Active	7/2221 15:53	7/2221 15:53	dichromy@ci.enimc.wa.us	PS04166	ditch	-121.972001	47.19313676
PS04166	Lateral A West of Watson	54	cloudy	L7week	active	clear	0	0	None	81/1921 20:37	81/1921 20:37	dichromy@ci.enimc.wa.us	PS04166	ditch	-121.972001	47.19313676
PS04166	Lateral A West of Watson	65	sunny	L7week	active	clear	150	0	None	9/2321 15:27	9/2321 15:27	dichromy@ci.enimc.wa.us	PS04166	ditch	-121.972001	47.19313676
PS04166	Lateral A West of Watson	55	mostlyCloudy	current	active	clear	0	0	None	9/2921 17:45	10/121 21:06	dichromy@ci.enimc.wa.us	PS04166	ditch	-121.972001	47.19313676
PS04166	Lateral A West of Watson	53	rain	current	active	clear	0	0	Active Flow	101/121 20:43	101/121 20:43	dichromy@ci.enimc.wa.us	PS04166	ditch	-121.972001	47.19313676
PS04166	Lateral A West of Watson	46	rain	current	active	clear	40	0	Active Flow	101/421 15:30	101/421 15:30	dichromy@ci.enimc.wa.us	PS04166	ditch	-121.972001	47.19313676
PS04166	Lateral A West of Watson	58	mostlyCloudy	24048	active	clear	0	0	Active Flow	11/221 19:30	11/221 19:30	dichromy@ci.enimc.wa.us	PS04166	ditch	-121.972001	47.19313676
PS04166	Lateral A West of Watson	40	partlySunny	L7week	active	clear	20	0	16 KCD Dpt of Ecology	11/1821 15:58	11/1821 15:58	dichromy@ci.enimc.wa.us	PS04166	ditch	-121.972001	47.19313676
PS04166	Lateral A West of Watson	38	rain	L724	active	clear	0	0	Active Flow, no trash	12/1621 16:15	12/1621 16:28	dichromy@ci.enimc.wa.us	PS04166	ditch	-121.972001	47.19313676
PS04166	Lateral A West of Watson	49	rain	current	active	clear	430	0	Active Flow	12/2022 15:49	12/2022 15:49	dichromy@ci.enimc.wa.us	PS04166	ditch	-121.972001	47.19313676
PS04166	Lateral A West of Watson	49														

PS04168	Main Flume West Outfall	epalmer	46	rain	current	active	clear	110	5/20/21 15:29	epalmer@ci.annandewa.us	PS04168	outfall	-121.902473	47.19861519	
PS04168	Main Flume West Outfall	epalmer	50	sunny	24648	active	clear	110	6/11/21 15:19	epalmer@ci.annandewa.us	PS04168	outfall	-121.902473	47.19861519	
PS04168	Main Flume West Outfall	epalmer	55	sunny	0	GTEweek	stagnant	clear	7/22/21 16:45	epalmer@ci.annandewa.us	PS04168	outfall	-121.902473	47.19861519	
PS04168	Main Flume West Outfall	epalmer	52	cloudy	0	GTEweek	stagnant	clear	8/19/21 20:39	epalmer@ci.annandewa.us	PS04168	outfall	-121.902473	47.19861519	
PS04168	Main Flume West Outfall	epalmer	65	sunny	0	L7week	stagnant	clear	9/23/21 16:16	epalmer@ci.annandewa.us	PS04168	outfall	-121.902473	47.19861519	
PS04168	Main Flume West Outfall	epalmer	47	mostlyCloudy	current	active	clear	870	10/14/21 16:30	10/14/21 16:30	chorny@ci.annandewa.us	PS04168	outfall	-121.902473	47.19861519
PS04168	Main Flume West Outfall	epalmer	49	partlySunny	current	active	clear	110	11/18/21 16:29	11/18/21 16:29	chorny@ci.annandewa.us	PS04168	outfall	-121.902473	47.19861519
PS04168	Main Flume West Outfall	epalmer	38	rain	LT24	active	clear	50	12/16/21 17:30	12/16/21 17:30	chorny@ci.annandewa.us	PS04168	outfall	-121.902473	47.19861519
PS04168	Main Flume West Outfall	epalmer	49	rain	current	active	clear	110	12/22/2 16:23	12/22/2 16:23	chorny@ci.annandewa.us	PS04168	outfall	-121.902473	47.19861519
PS04168	Main Flume West Outfall	epalmer	49	rain	LTweek	active	clear	130	12/22/2 16:23	12/22/2 16:23	chorny@ci.annandewa.us	PS04168	outfall	-121.902473	47.19861519
PS04168	Main Flume West Outfall	epalmer	46	cloudy	0	L7week	active	clear	21/22/2 16:24	21/22/2 16:24	chorny@ci.annandewa.us	PS04168	outfall	-121.902473	47.19861519
PS04168	Main Flume West Outfall	epalmer	43	cloudy	24648	active	clear	130	21/22/2 16:24	21/22/2 16:24	chorny@ci.annandewa.us	PS04168	outfall	-121.902473	47.19861519
PS04168	Main Flume West Outfall	epalmer	43	cloudy	24648	active	clear	80	31/7/22 15:26	31/7/22 15:26	chorny@ci.annandewa.us	PS04168	outfall	-121.902441	47.19861506
PS04168	Main Flume West Outfall	epalmer	45	rain	LT24	active	slightlyTurbid	0	4/21/22 15:37	4/21/22 15:37	epalmer@ci.annandewa.us	PS04168	outfall	-121.902441	47.19861506
PS04168	Main Flume West Outfall	epalmer	42	rain	LTweek	active	clear	60	9/18/22 15:05	9/18/22 15:05	epalmer@ci.annandewa.us	PS04168	outfall	-121.902441	47.19861506
PS04168	Main Flume West Outfall	epalmer	50	cloudy	LT24	active	slightlyTurbid	180	6/16/22 10:47	6/16/22 10:47	chorny@ci.annandewa.us	PS04168	outfall	-121.902441	47.19861506
PS04168	Main Flume West Outfall	epalmer	58	sunny	stagnant	active	clear	1200	7/21/22 15:52	7/21/22 15:52	chorny@ci.annandewa.us	PS04168	outfall	-121.902441	47.19861506
PS04168	Main Flume West Outfall	epalmer	70	cloudy	GTEweek	stagnant	slightlyTurbid	1200	8/18/22 15:16	8/18/22 15:16	epalmer@ci.annandewa.us	PS04168	outfall	-121.902441	47.19861506
PS04168	Main Flume West Outfall	epalmer	74	sunny	GTEweek	stagnant	clear	1500	8/12/22 18:07	8/12/22 18:07	chorny@ci.annandewa.us	PS04168	outfall	-121.902441	47.19861506
PS04168	Main Flume West Outfall	epalmer	55	cloudy	GTEweek	stagnant	clear	60	9/22/22 15:50	9/22/22 15:50	chorny@ci.annandewa.us	PS04168	outfall	-121.902441	47.19861506
PS04168	Main Flume West Outfall	epalmer	46	partlySunny	GTEweek	stagnant	clear	60	10/22/22 15:50	10/22/22 15:50	epalmer@ci.annandewa.us	PS04168	outfall	-121.902441	47.19861506
PS04168	Main Flume West Outfall	epalmer	148	partlySunny	GTEweek	stagnant	clear	148	11/17/22 16:24	11/17/22 16:24	epalmer@ci.annandewa.us	PS04168	outfall	-121.902441	47.19861506
PS04168	Main Flume West Outfall	epalmer	38	partlySunny	LT24	active	modTurbid	220	1/19/23 17:14	1/19/23 17:14	chorny@ci.annandewa.us	PS04168	outfall	-121.902441	47.19861506
PS04168	Main Flume West Outfall	epalmer	24	partlySunny	LT24	active	clear	60	2/23/23 16:36	2/23/23 16:36	chorny@ci.annandewa.us	PS04168	outfall	-121.902441	47.19861506
PS04168	Main Flume West Outfall	epalmer	44	mostlyCloudy	LT24	active	clear	40	3/23/23 15:41	3/23/23 15:41	chorny@ci.annandewa.us	PS04168	outfall	-121.902441	47.19861506
PS04168	Main Flume West Outfall	epalmer	42	cloudy	LT24	active	clear	70	4/20/23 15:13	4/20/23 15:13	chorny@ci.annandewa.us	PS04168	outfall	-121.902441	47.19861506
PS04168	Main Flume West Outfall	epalmer	50	partlySunny	LT24	active	clear	50	6/22/23 15:39	6/22/23 15:39	chorny@ci.annandewa.us	PS04168	outfall	-121.902441	47.19861506
PS04168	Main Flume West Outfall	epalmer	60	sunny	GTEweek	stagnant	veryTurbid	30	7/20/23 14:41	7/20/23 14:41	chorny@ci.annandewa.us	PS04168	outfall	-121.902441	47.19861506
PS04168	Main Flume West Outfall	epalmer	69	sunny	GTEweek	stagnant	slightlyTurbid	30	8/17/23 15:30	8/17/23 15:30	chorny@ci.annandewa.us	PS04168	outfall	-121.902441	47.19861506
PS04168	Main Flume West Outfall	epalmer	68	sunny	GTEweek	stagnant	clear	110	9/7/23 14:36	9/7/23 14:36	chorny@ci.annandewa.us	PS04168	outfall	-121.902441	47.19861506
PS04168	Main Flume West Outfall	epalmer	49	sunny	LT24	active	clear	120	9/21/23 14:57	9/21/23 14:57	epalmer@ci.annandewa.us	PS04168	outfall	-121.902441	47.19861506
PS04168	Main Flume West Outfall	epalmer	52	rain	24648	active	clear	110	10/19/23 14:07	10/19/23 14:07	chorny@ci.annandewa.us	PS04168	outfall	-121.902441	47.19861506
PS04168	Main Flume West Outfall	epalmer	32	sunny	LT24	active	clear	70	11/16/23 16:26	11/16/23 16:26	chorny@ci.annandewa.us	PS04168	outfall	-121.902441	47.19861506
PS04168	Main Flume West Outfall	epalmer	38	partlySunny	24648	active	clear	210	12/12/23 16:26	12/12/23 16:26	chorny@ci.annandewa.us	PS04168	outfall	-121.902441	47.19861506
PS04168	Main flume north outfall	epalmer	52	rain	LTweek	active	slightlyTurbid	20	8/23/20 16:32	8/23/20 16:32	chorny@ci.annandewa.us	PS04168	outfall	-121.902441	47.19861506
PS04168	Main flume north outfall	epalmer	42	rain	LTweek	active	clear	10	20/20 16:56	8/10/20 17:21	chorny@ci.annandewa.us	PS04168	outfall	-121.902441	47.19861506
PS04168	Main flume north outfall	epalmer	39	sunny	LTweek	active	clear	10	8/19/20 16:28	8/19/20 16:28	chorny@ci.annandewa.us	PS04168	outfall	-121.902441	47.19861506
PS04168	Main flume north outfall	epalmer	48	rain	current	active	slightlyTurbid	10	20/20 16:56	8/10/20 17:21	chorny@ci.annandewa.us	PS04168	outfall	-121.902441	47.19861506
PS04168	Main flume north outfall	epalmer	50	cloudy	current	active	modTurbid	90	5/21/20 16:26	8/10/20 17:21	chorny@ci.annandewa.us	PS04168	outfall	-121.902441	47.19861506
PS04168	Main flume north outfall	epalmer	60	sunny	GTEweek	stagnant	slightlyTurbid	30	7/30/20 16:08	8/10/20 17:21	chorny@ci.annandewa.us	PS04168	outfall	-121.902441	47.19861506
PS04168	Main flume north outfall	epalmer	50	cloudy	GTEweek	stagnant	clear	310	9/24/20 15:35	8/24/20 15:35	chorny@ci.annandewa.us	PS04168	outfall	-121.902441	47.19861506
PS04168	Main flume north outfall	epalmer	50	sunny	24648	active	clear	0	10/15/20 14:17	10/15/20 14:17	chorny@ci.annandewa.us	PS04168	outfall	-121.902441	47.19861506
PS04168	Main flume north outfall	epalmer	40	sunny	24648	active	clear	0	10/22/20 15:24	10/22/20 15:24	chorny@ci.annandewa.us	PS04168	outfall	-121.902441	47.19861506
PS04168	Main flume north outfall	epalmer	45	partlySunny	LT24	active	clear	0	11/19/20 17:05	11/19/20 17:05	epalmer@ci.annandewa.us	PS04168	outfall	-121.902441	47.19861506
PS04168	Main flume north outfall	epalmer	39	partlySunny	24648	active	clear	60	Low but active flow	12/10/20 17:45	chorny@ci.annandewa.us	PS04168	outfall	-121.902441	47.19861506
PS04168	Main flume north outfall	epalmer	47	sunny	LTweek	active	clear	10	12/11 17:10	12/11 17:10	epalmer@ci.annandewa.us	PS04168	outfall	-121.902441	47.19861506
PS04168	Main flume north outfall	epalmer	42	cloudy	24648	active	clear	0	21/8/21 16:09	21/8/21 16:09	chorny@ci.annandewa.us	PS04168	outfall	-121.902441	47.19861506
PS04168	Main flume north outfall	epalmer	41	cloudy	GTEweek	active	clear	0	31/8/21 15:54	31/8/21 15:54	chorny@ci.annandewa.us	PS04168	outfall	-121.902441	47.19861506
PS04168	Main flume north outfall	epalmer	47	sunny	GTEweek	stagnant	clear	0	4/15/21 15:42	4/15/21 15:42	chorny@ci.annandewa.us	PS04168	outfall	-121.902441	47.19861506
PS04168	Main flume north outfall	epalmer	43	cloudy	24648	active	clear	0	31/7/22 15:22	31/7/22 15:22	chorny@ci.annandewa.us	PS04168	outfall	-121.902441	47.19861506
PS04168	Main flume north outfall	epalmer	45	rain	LT24	active	slightlyTurbid	0	4/21/22 15:31	4/21/22 15:31	chorny@ci.annandewa.us	PS04168	outfall	-121.902441	47.19861506
PS04168	Main flume north outfall	epalmer	44	mostlyCloudy	LT24	active	stagnant	0	3/23/23 15:39	3/23/23 15:39	epalmer@ci.annandewa.us	PS04168	outfall	-121.902441	47.19861506
PS04170	Just Downstream of 767 Warner on Lat A	epalmer	34	sunny	LTweek	active	slightlyTurbid	140	8/19/20 15:15	8/19/20 15:15	chorny@ci.annandewa.us	PS04170	ditch	-121.888439	47.19326221
PS04170	Just Downstream of 767 Warner on Lat A	epalmer	46	rain	current	active	clear	800	8/23/20 15:16	8/23/20 15:16	chorny@ci.annandewa.us	PS04170	ditch	-121.888439	47.19326221
PS04170	Just Downstream of 767 Warner on Lat A	epalmer	50	cloudy	LTweek	active	clear	260	5/21/20 15:19	8/10/20 17:21	chorny@ci.annandewa.us	PS04170	ditch	-121.888439	47.19326221
PS04170	Just Downstream of 767 Warner on Lat A	epalmer	51	cloudy	GTEweek	active	clear	100	8/30/20 15:15	8/30/20 15:15	chorny@ci.annandewa.us	PS04170	ditch	-121.888439	47.19326221
PS04170	Just Downstream of 767 Warner on Lat A	epalmer	65	sunny	GTEweek	active	clear	260	8/20/20 15:10	8/21/20 15:10	chorny@ci.annandewa.us	PS04170	ditch	-121.888439	47.19326221
PS04170	Just Downstream of 767 Warner on Lat A	epalmer	49	rain	current	active	clear	510	11/5/20 22:17	11/5/20 22:17	chorny@ci.annandewa.us	PS04170	ditch	-121.888439	47.19326221
PS04170	Just Downstream of 767 Warner on Lat A	epalmer	51	cloudy	LTweek	active	clear	160	8/18/21 20:35	8/18/21 20:35	chorny@ci.annandewa.us	PS04170	ditch	-121.888439	47.19326221
PS04171	Mid point on 751 Warner on Lat A	epalmer	34	sunny	LTweek	active	slightlyTurbid	10	3/19/20 15:25	8/10/20 17:21	chorny@ci.annandewa.us	PS04171	ditch	-121.888439	47.19326221
PS04171	Mid point on 751 Warner on Lat A	epalmer	50	cloudy	LTweek	active	clear	100	8/19/20 15:15	8/19/20 15:15	chorny@ci.annandewa.us	PS04171	ditch	-121.888439	47.19326221
PS04172	Upstream property line of 703 Warner on Lat A	epalmer	36	sunny	LTweek	active	clear	80	3/19/20 15:45	8/10/20 17:21	chorny@ci.annandewa.us	PS04172	ditch	-121.888439	47.19326221
PS04172	Upstream property line of 703 Warner on Lat A	epalmer	47	rain	current	active	clear	1200	4/23/20 15:48	8/10/20 17:21	chorny@ci.annandewa.us	PS04172	ditch	-121.888439	47.19326221
PS04172	Upstream property line of 703 Warner on Lat A	epalmer	50	cloudy	LTweek	active	clear	240	8/10/20 17:21	8/10/20 17:21	chorny@ci.annandewa.us	PS04172	ditch	-121.888439	47.19326221
PS04173	6" pipe on eastern property line of 703 Warner	epalmer	36	sunny	LTweek	active	clear	0	3/19/20 15:45	8/10/20 17:21	chorny@ci.annandewa.us	PS04173	ditch	-121.888439	47.19326221
PS04174	Ditch culvert on eastern property line of 703 Warner	epalmer	62	partlySunny	24648	active	clear	0	4/28/20 17:44	8/10/20 17:21	chorny@ci.annandewa.us	PS04174	ditch	-121.888439	47.19326221
PS04175	Ditch culvert inlet	epalmer	60	partlySunny	24648	active	clear	0	8/20/20 16:06	8/20/20 16:06	chorny@ci.annandewa.us	PS04175	ditch	-121.888439	47.19326221
PS04176	Cooper Pond Spring Pipe from Sigist	epalmer	70	sunny	GTEweek	active	clear	0	10/15/20 14:30	10/15/20 14:30	chorny@ci.annandewa.us	PS04176	ditch	-121.888439	47.19326221
PS04177	Surtop Outfall	epalmer	62	mostlyCloudy	LTweek	active	clear	2000	7/22/21 16:23	7/22/21 16:23	chorny@ci.annandewa.us	PS04177	ditch	-121.937683	47.1933935
PS04177	Surtop Outfall	epalmer	55	cloudy	GTEweek	stagnant	clear	40	8/19/21 20:38	8/19/21 20:38	epalmer@ci.annandewa.us	PS04177	ditch	-121.937683	47.1933935
PS04177															