

**ANNUAL PRE-TREATMENT PLAN
FOR ZOSTERA JAPONICA CONTROL ON COMMERCIAL
CLAM BEDS IN WILLAPA BAY
FOR
WIEGARDT & SONS INC.
WAG 993006**

Submitted to:

Washington Department of Ecology

April 12, 2024

Author:

David Beugli

WGHOGA

Annual Pre-Treatment Plan

The locations of acreage planned for treatment in 2024, including GPS coordinates of each corner of the area, size in acres of each area and cooperating adjacent land owners are shown in Table 1.

Table 1. Coordinates of the overall area where japonica control will be implemented. Actual acres to be treated will be less than those indicated by the overall bed boundaries.

Bed Name	Parcel	Acres	Corner Coordinates		Cooperating Landowners
			Latitude	Longitude	
E94, E228, E108, E232, E94, E79, E3	79005000232 79005000108 790500179 7900500179 79005003003	284	46.6061	-124.0382	Heckes Clams Inc.
			46.6061	-124.0351	Coast Seafoods
			46.6068	-124.0359	Stackpole Harbor LLC.
			46.6083	-124.0378	Taylor Resources Inc.
			46.6097	-124.0330	Grassy Island Clam Farms
			46.6074	-124.0330	
			46.6079	-124.0310	
			46.6044	-124.0290	
			46.6035	-124.0320	
			46.6033	-124.0284	
			46.5984	-124.0256	
			46.5981	-124.0333	
			46.6024	-124.0345	
			46.6039	-124.0374	
TL67	13112255067	80	46.5952	-124.0341	
			46.5956	-124.0302	
			46.5942	-124.0240	
			46.5845	-124.0202	
			46.5843	-124.0251	
D91, D74, D4, D75, D76	79004000091 79004000074 79004000004 79004003075 79004001075 79004003004	115	46.5902	-124.0289	
			46.4538	-124.0268	Heckes Clams Inc.
			46.4539	-124.0194	
			46.4636	-124.0195	
			46.4634	-124.0259	
D51	79004000051	46	46.4502	-124.0211	Taylor Resources Inc.
			46.4502	-124.0142	Heckes Clams Inc.
			46.4492	-124.0148	
			46.4480	-124.0195	
D110A, TL499, D92, D110B	79004000092	5	46.4788	-124.0267	Grassy Island Clam Farms
			46.4788	-124.0256	Willapa Bay Shellfish
			46.4727	-124.0238	
			46.4728	-124.0265	
			46.4773	-124.0269	
			46.4733	-124.0266	
D103 N 1/2, D103 S 1/2, D72, D108	79004001103 79004003103 79004000072 79004000108	32	46.4885	-123.9940	
			46.4883	-123.9930	
			46.4729	-123.9949	
			46.4698	-123.9947	
			46.4698	-123.9942	

Annual Pre-Treatment Plan (Maps)

Figures 1-5 show the locations of proposed japonica treatments for 2024. In 2023 treatments occurred on beds D92, D110A, D110B, D91, and TL499.

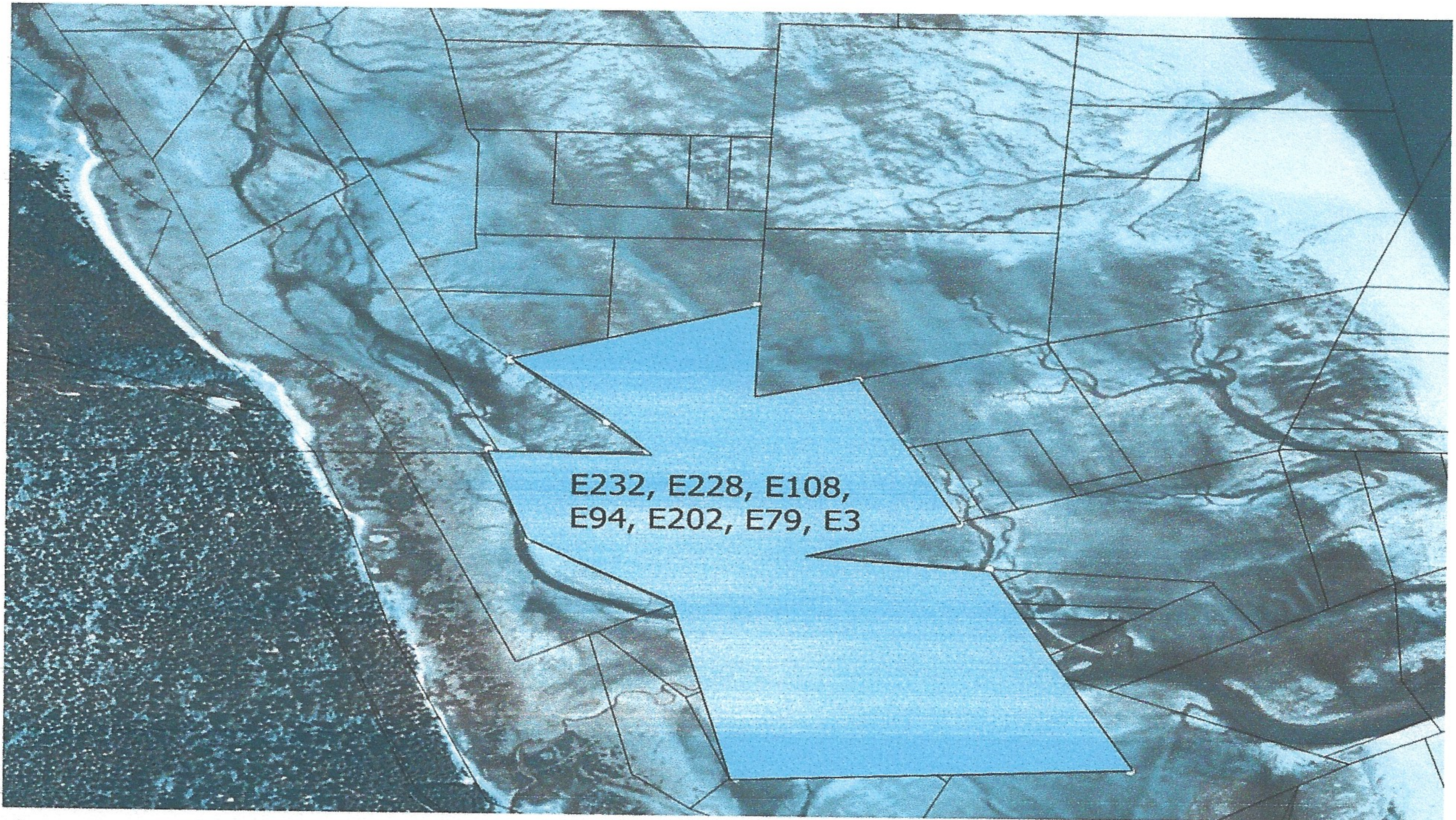


Figure 1. Parcels 79005000232, 79005000108, 790500179, 7900500179, 79005003003.

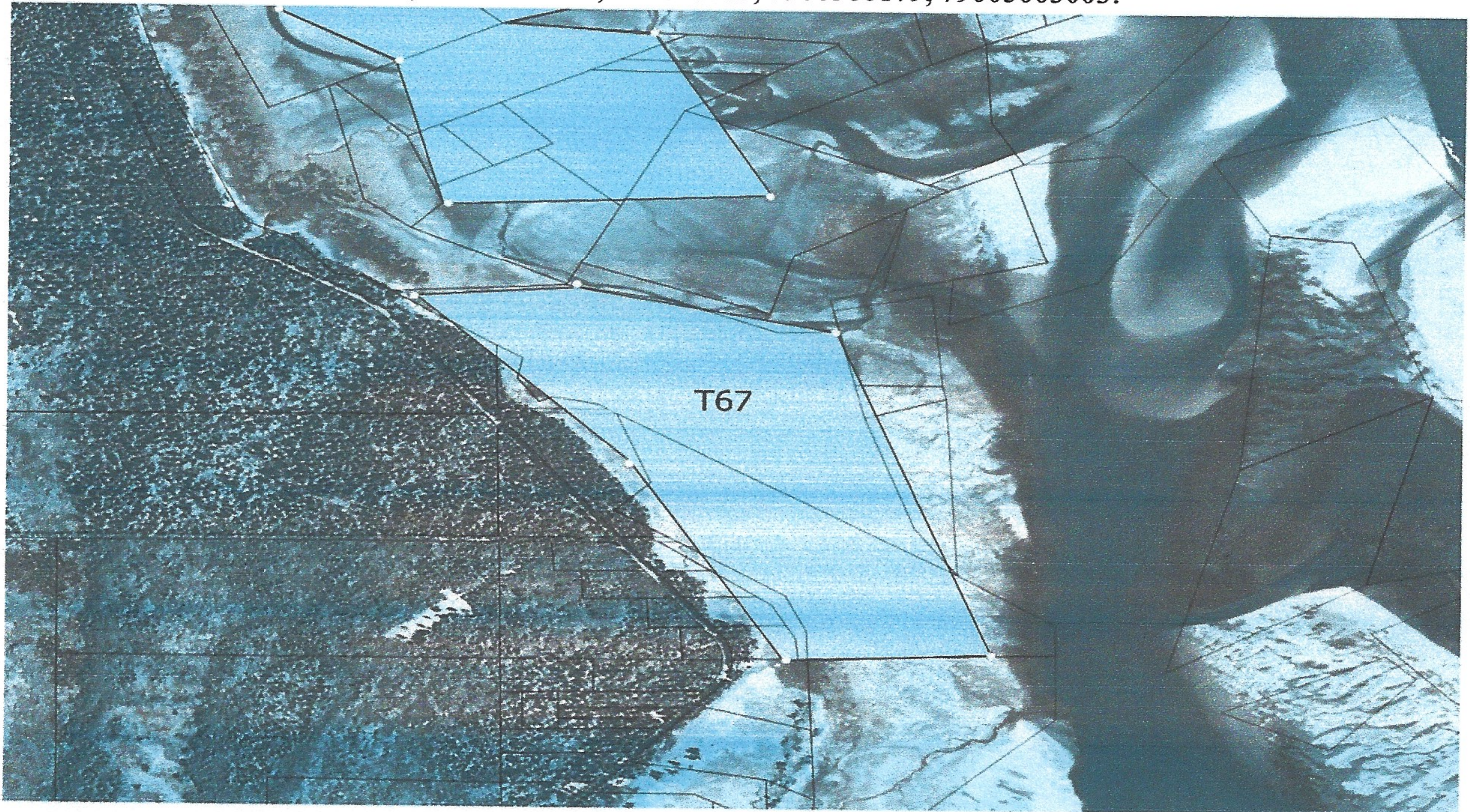


Figure 2. Parcel 13112255067.

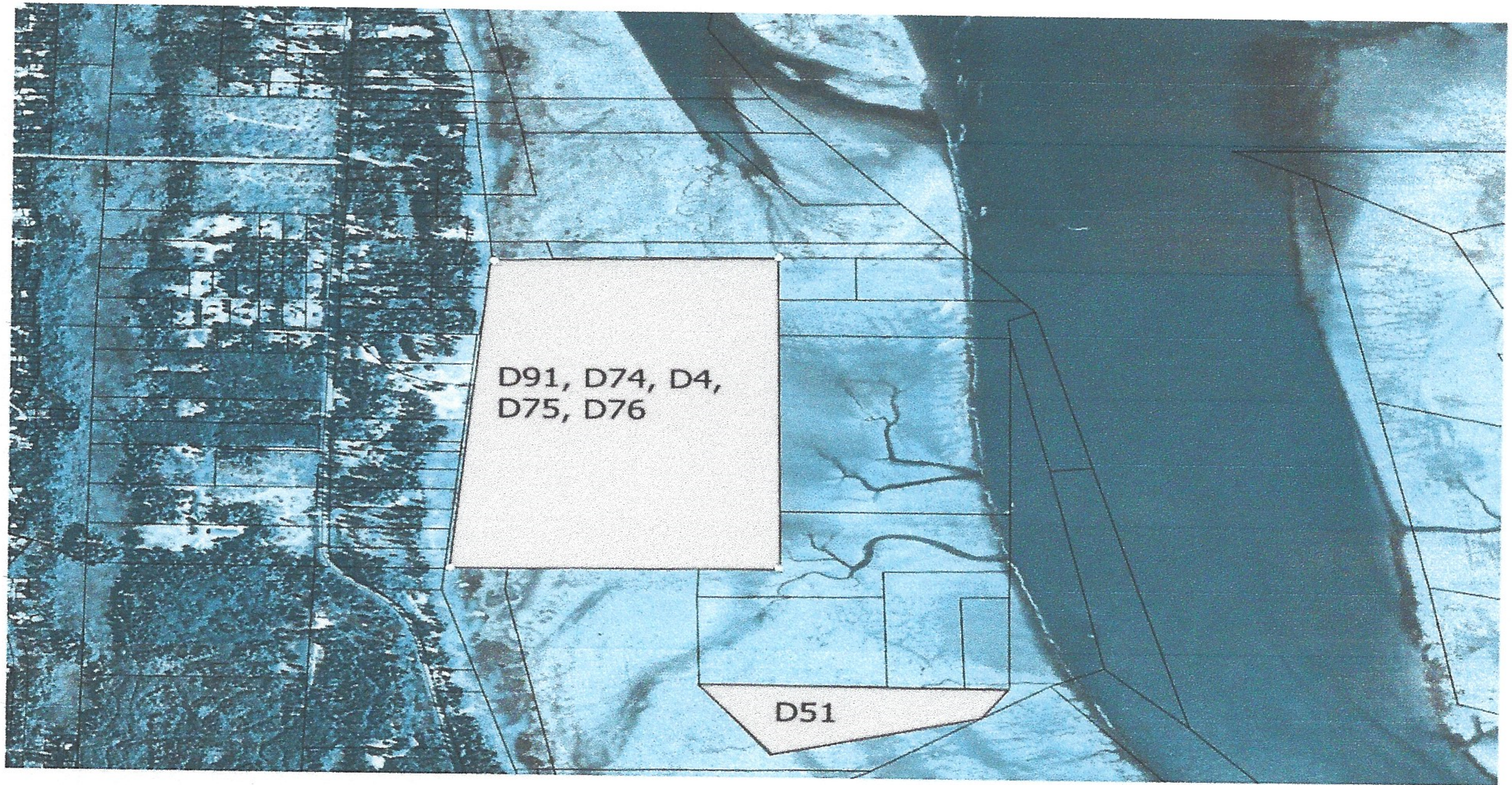


Figure 3. Parcels 79004000091, 79004000074, 79004000004, 79004003075, 79004001075, 79004003004, 79004000051.

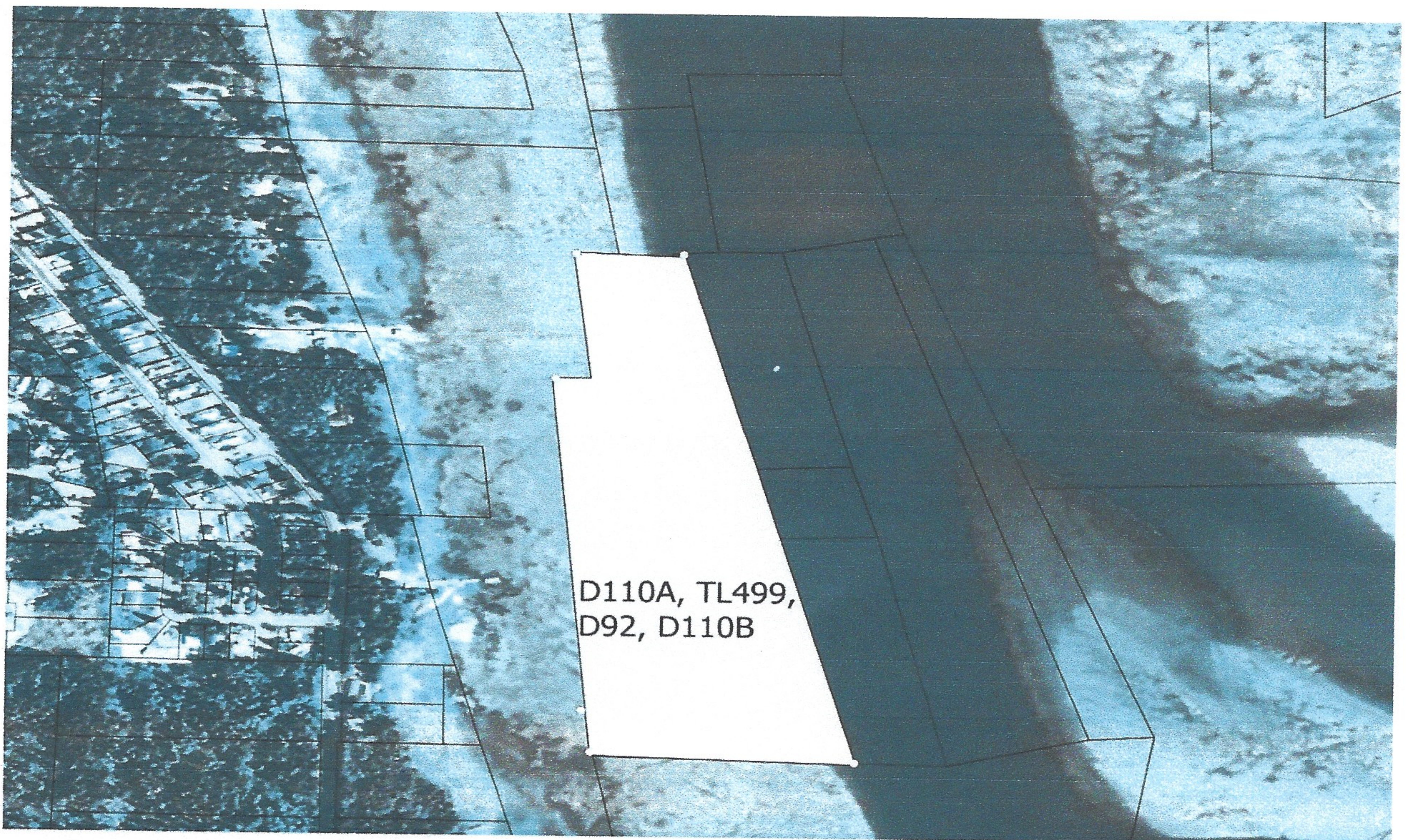


Figure 4. Parcel 79004000092

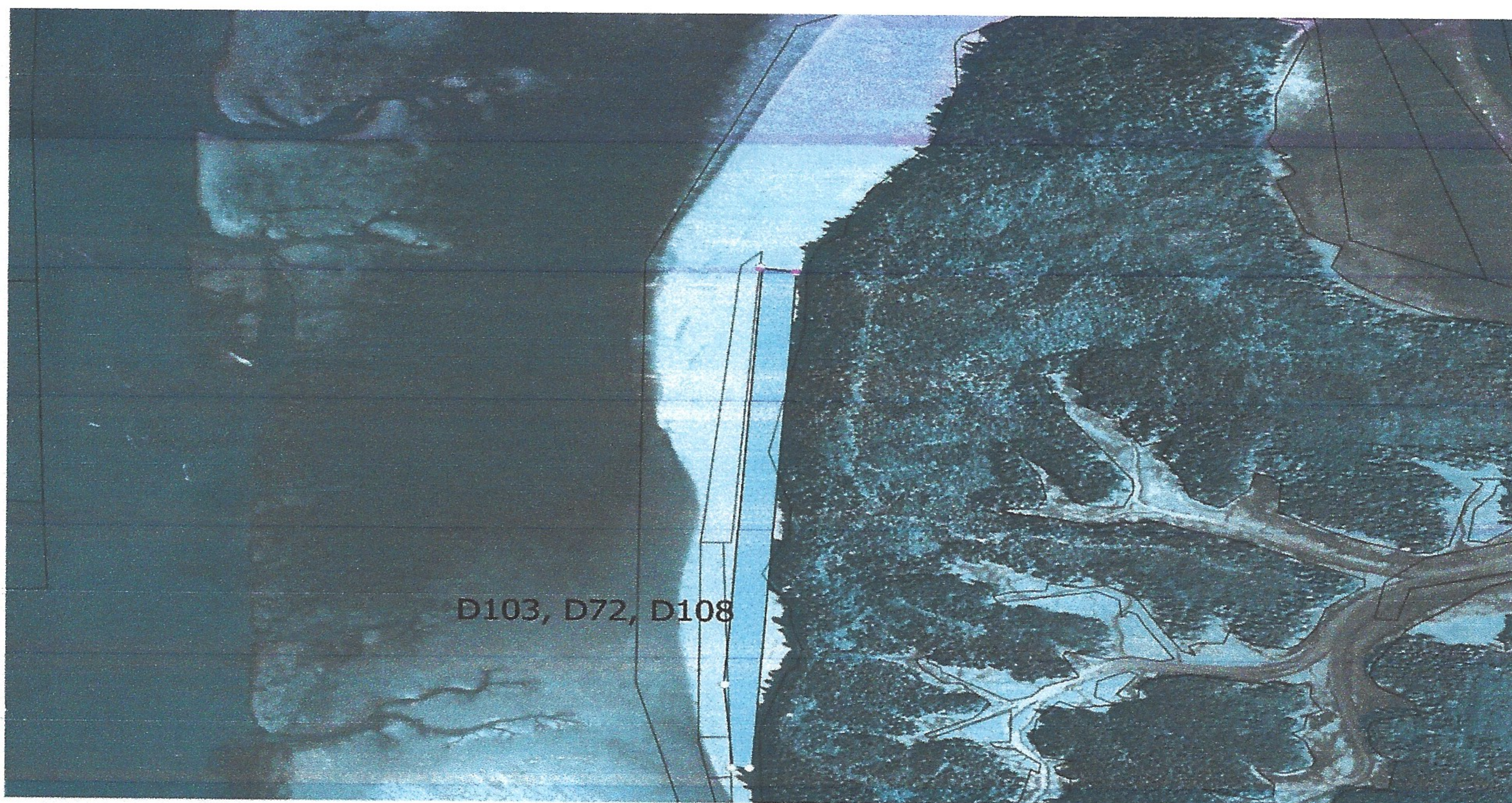


Figure 5. Parcels 79004001103, 79004003103, 79004000072, 79004000108

Signature Requirements

I certify under penalty of law, that this document and all attachments were prepared under my direction or supervision in accordance with a system designed to assure that qualified personnel properly gathered and evaluated the information submitted. Based on my inquiry of those persons directly responsible for gathering information, the information in the Pretreatment Plan is, to the best of my knowledge and belief, true, accurate, and complete and will be updated as necessary. I am aware that there are significant penalties for submitting false information, including the possibility of fine and imprisonment of knowing violations.

A handwritten signature in black ink, consisting of a stylized, cursive letter 'S' followed by a horizontal line.

Signature

A handwritten date in black ink, reading '4/9/24'.

Date