

**ANNUAL PRE-TREATMENT PLAN
FOR ZOSTERA JAPONICA CONTROL ON COMMERCIAL
CLAM BEDS IN WILLAPA BAY
FOR
HECKES CLAMS INC.
WAG 993010**

Submitted to:

Washington Department of Ecology

April 12, 2024

Author:

David Beugli

WGHOGA

Annual Pre-Treatment Plan

The locations of acreage planned for treatment in 2024, including GPS coordinates of each corner of the area, size in acres of each area and cooperating adjacent land owners are shown in Table 1.

Table 1. Coordinates of the overall area where japonica control will be implemented. Actual acres to be treated will be less than those indicated by the overall bed boundaries.

Bed Name	Parcel	Acres	Corner Coordinates		Cooperating Landowners
			Latitude	Longitude	
D56	79004000056	40	46.4052	-123.9799	
			46.4030	-123.9677	
			46.3978	-123.9796	
TL46	11111055046	15	46.4480	-124.0215	Weigardt & Sons Inc.
			46.4466	-124.0217	Taylor Resources Inc.
			46.4466	-124.0201	
			46.4472	-124.0191	
			46.4483	-124.0193	
E126	79005000126	10	46.5535	-124.0249	Taylor Resources Inc.
			46.5535	-124.0181	
			46.5524	-124.0210	
			46.5524	-124.0249	
B122	79001000122	6	46.6205	-123.9616	
			46.6205	-123.9600	
			46.6191	-123.9598	
			46.6192	-123.9613	
			46.6185	-123.9612	
			46.6184	-123.9617	
E231	79005003231	10	46.6099	-124.0392	Grassy Island Clam Farms
			46.6098	-124.0359	Willapa Bay Shellfish
			46.6088	-124.0359	Coast Seafoods
			46.6083	-124.0378	Wiegardt & Sons Inc.
E78, E78 S 1/2	79005001078 79005010078	55	46.5601	-124.0185	Grassy Island Clam Farms
			46.5601	-124.0136	Taylor Resources Inc.
			46.5560	-124.0136	
			46.5550	-124.0138	
			46.5548	-124.0183	

TL604, TL619	12112255604 12112255619	21	46.5073	-124.0283	Taylor Resources Inc.
			46.5070	-124.0264	
			46.5077	-124.0261	
			46.5077	-124.0237	
			46.5046	-124.0249	
			46.0460	-124.0272	
			46.5043	-124.0219	
			46.4410	-124.0213	Don Graves
D80, D81	79004000080 790040004081	80	46.4412	-124.0144	Herrold Fish & Oyster Co.
			46.4367	-124.0142	
			46.4367	-124.0189	
			46.4361	-124.0206	
			46.4366	-124.0141	
			46.4322	-124.0140	
			46.4321	-124.0161	
			46.4347	-124.0166	
			46.4347	-124.0204	
			46.4296	-124.0179	Long Island Oyster Co.
TL258	11112255258	70	46.4294	-124.0132	
			46.4178	-124.0127	
			46.4176	-124.0167	
			46.4102	-124.0010	Coast Seafoods
D82	79004000082	20	46.4081	-124.9944	
			46.4064	-124.0000	
			46.4073	-124.0051	
			46.4137	-124.0004	Coast Seafoods
D35	79004000035	5	46.4116	-123.9990	
			46.4093	-123.9939	
			46.4074	-123.9885	
			46.4064	-123.9891	
			46.4108	-124.0243	

Annual Pre-Treatment Plan (Maps)

Figures 1-8 show the locations of proposed japonica treatments for 2024. In 2023 treatments occurred on beds TL258, D80 and D81.

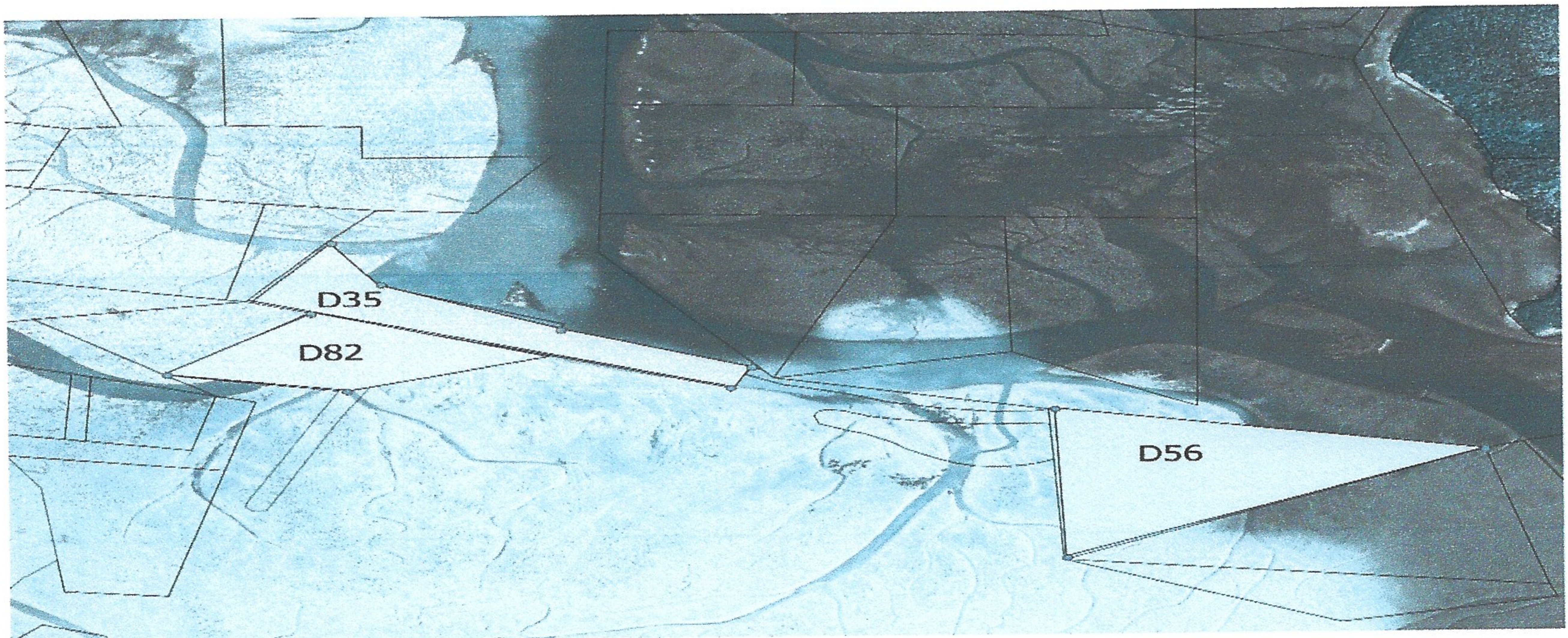


Figure 1. Parcels 79004000056, 79004000082, 79004000035.

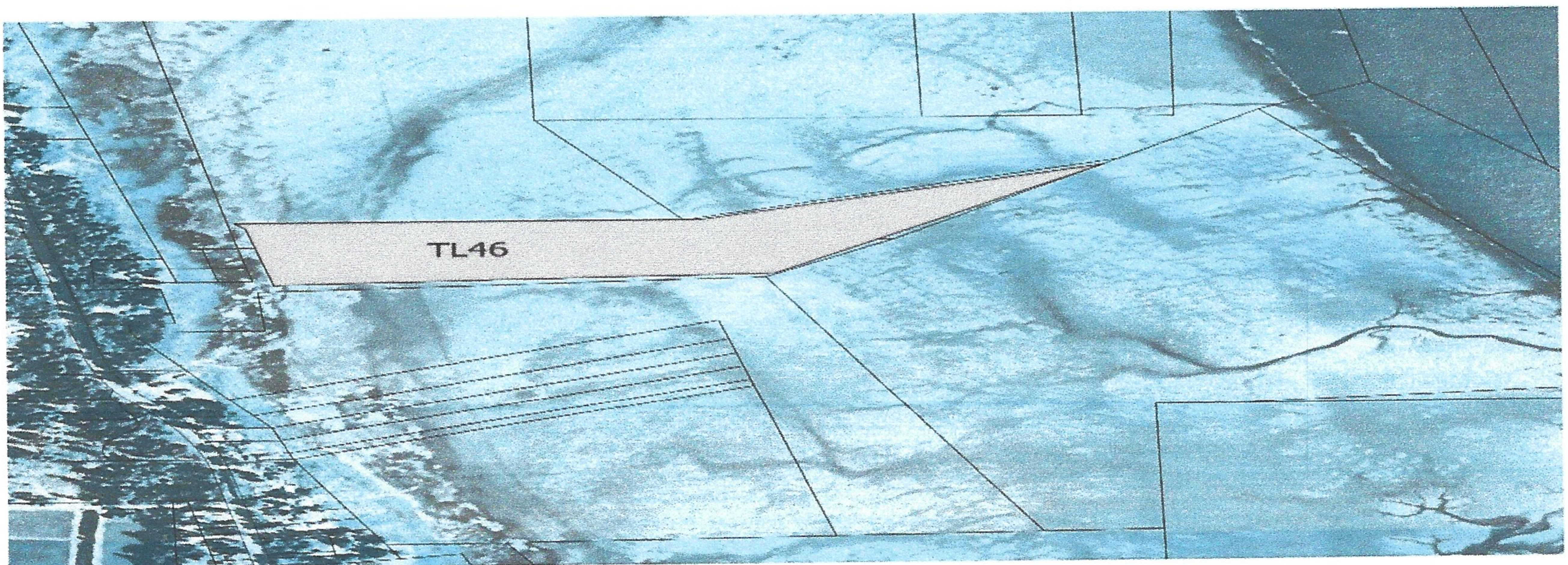


Figure 2. Parcel 11111055046

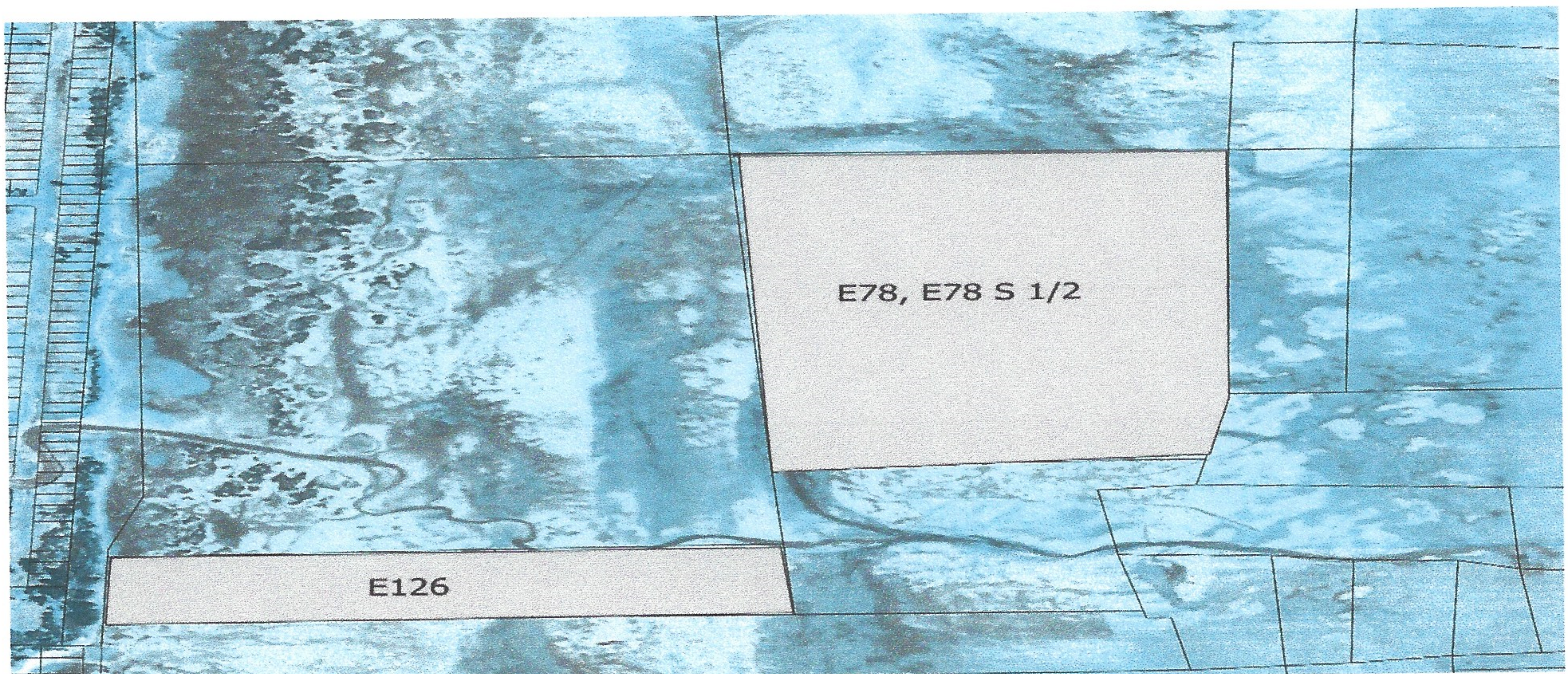


Figure 3. Parcels 79005000126, 79005001078, 79005010078.

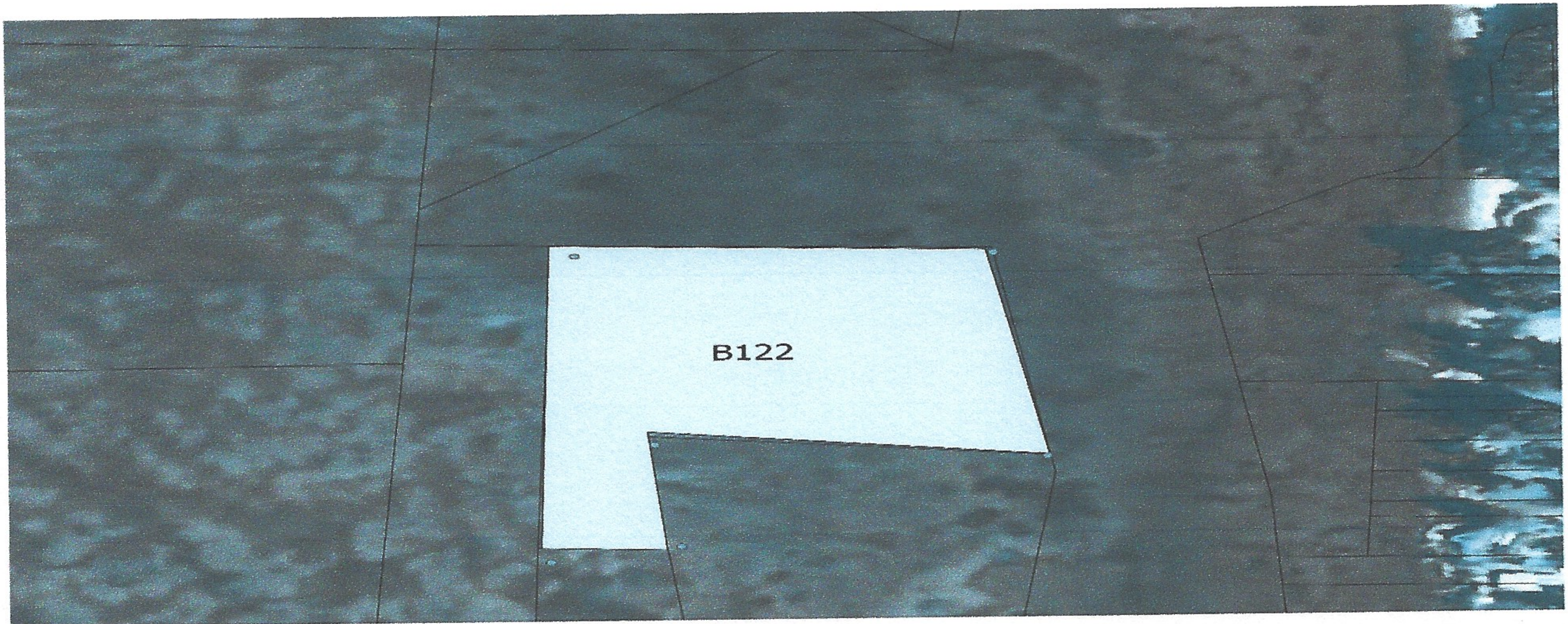


Figure 4. Parcel 79001000122.

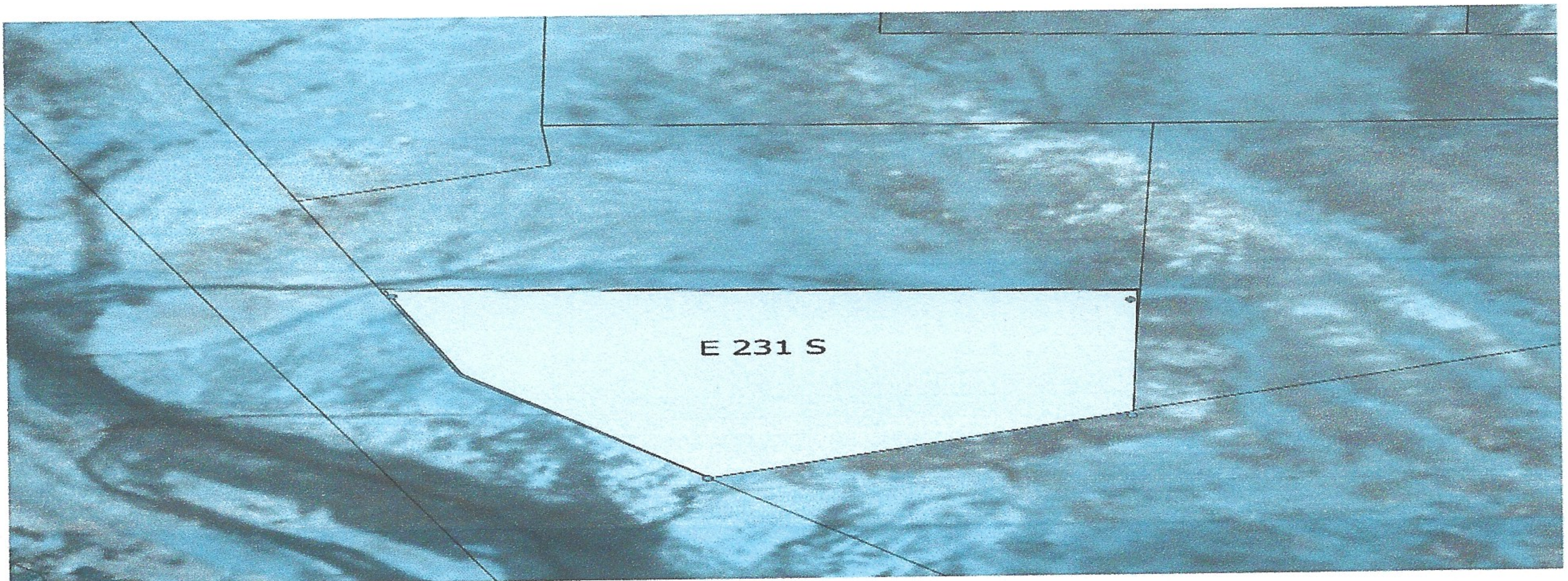


Figure 5. Parcel 790050032231.

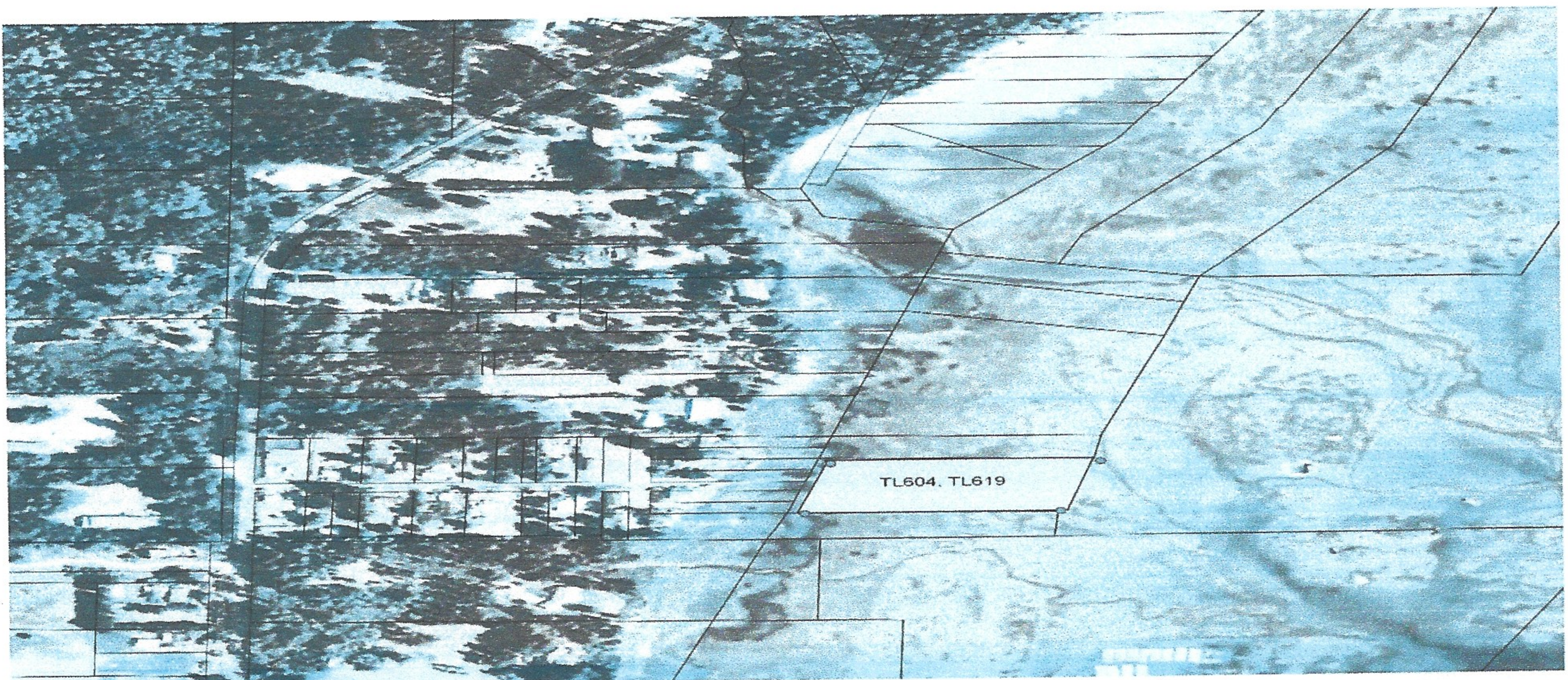


Figure 6. Parcels 12112255604, 12112255619.

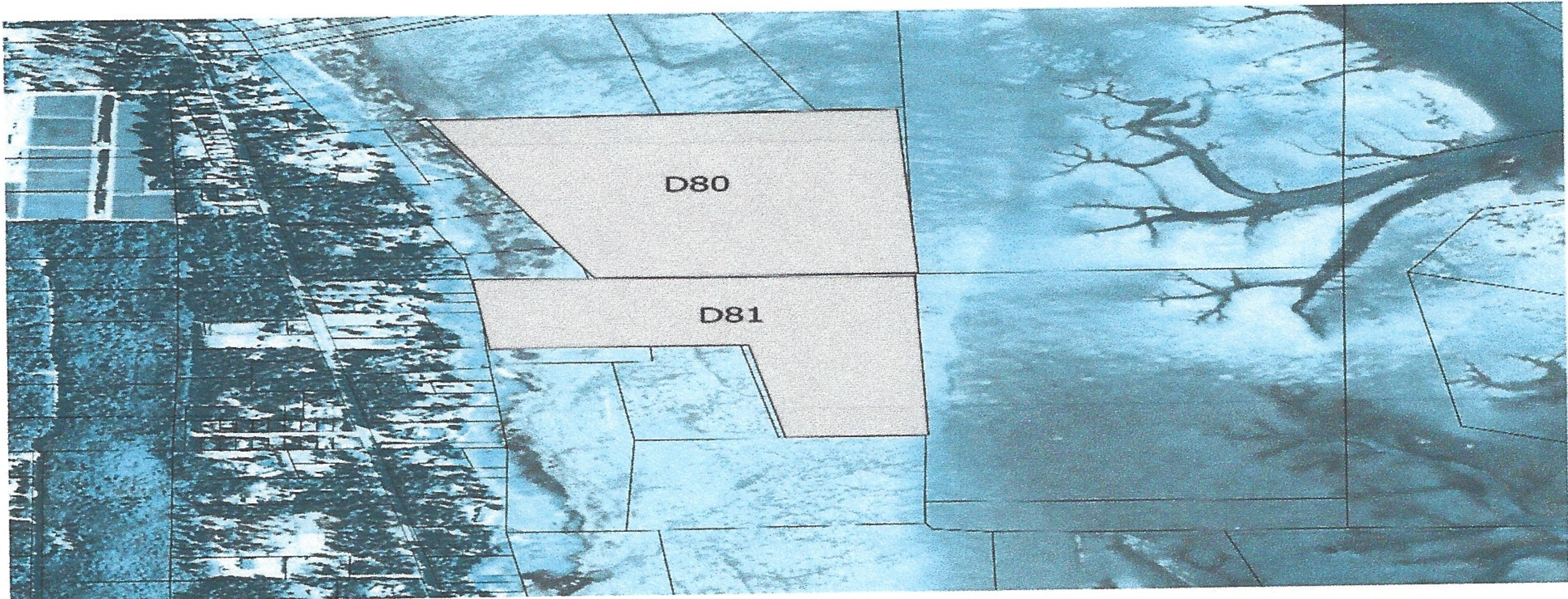


Figure 7. Parcels 79004000080, 79004004081

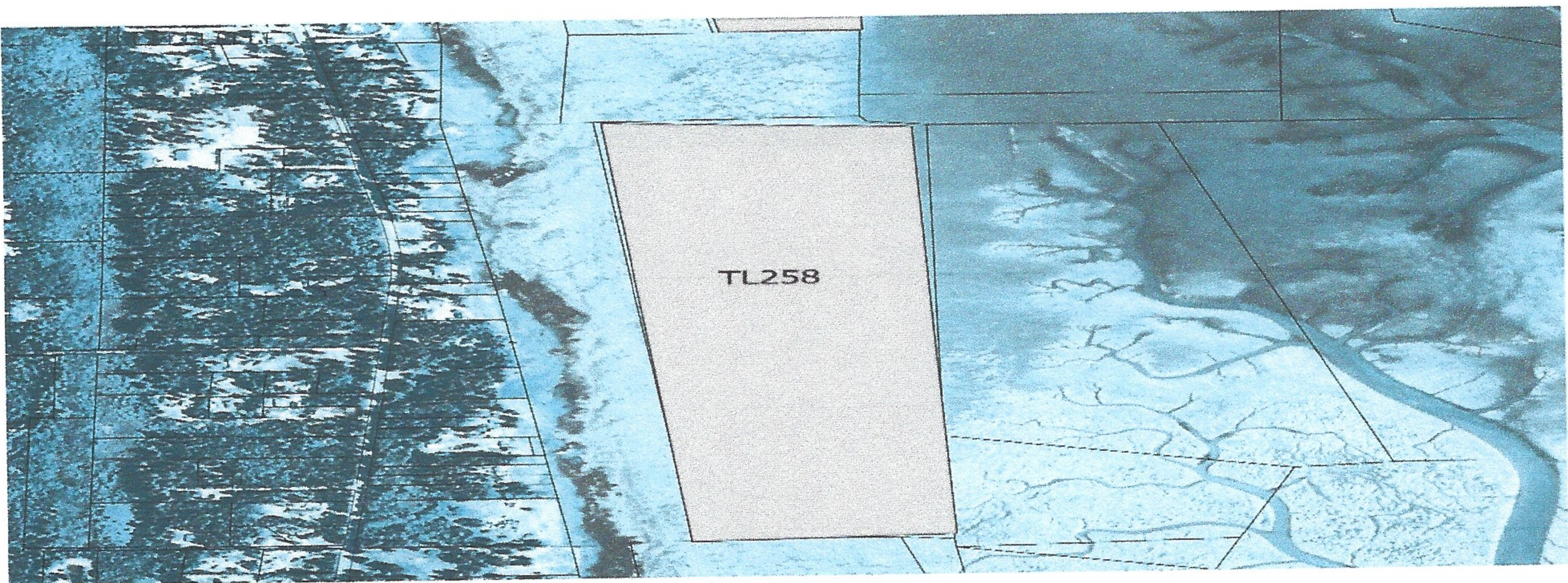



Figure 8. Parcel 1112255258.

Signature Requirements

I certify under penalty of law, that this document and all attachments were prepared under my direction or supervision in accordance with a system designed to assure that qualified personnel properly gathered and evaluated the information submitted. Based on my inquiry of those persons directly responsible for gathering information, the information in the Pretreatment Plan is, to the best of my knowledge and belief, true, accurate, and complete and will be updated as necessary. I am aware that there are significant penalties for submitting false information, including the possibility of fine and imprisonment of knowing violations.



 Signature

4/9/24

 Date