

**ANNUAL PRE-TREATMENT PLAN
FOR ZOSTERA JAPONICA CONTROL ON COMMERCIAL
CLAM BEDS IN WILLAPA BAY
FOR
NORTHERN OYSTER CO.
WAG 993007**

Submitted to:

Washington Department of Ecology

April 15, 2020

Author:

David Beugli

WGHOGA

Annual Pre-Treatment Plan

The locations of acreage planned for treatment in 2021, including GPS coordinates of each corner of the area, size in acres of each area, and cooperating adjacent land owners are shown in Table 1.

Table 1. Coordinates of the overall area where japonica control will be implemented. Actual acres to be treated will be less than those indicated by the overall bed boundaries.

Bed Name	Parcel	Acres	Corner Coordinates		Cooperating Landowners
			Latitude	Longitude	
D-99	79004000099	15	46.4722	-124.0244	Weigardt & Sons Inc.
			46.4722	-124.0263	Heckes Clams Inc.
			46.4677	-124.0244	
			46.4676	-124.0248	
TL-620	12112255620	15	46.5081	-124.0257	Taylor Resources Inc.
			46.5081	-124.0238	Heckes Clams Inc.
			46.5100	-124.0228	
			46.5117	-124.0221	
			46.5117	-124.0233	
E-2	79005000002	5	46.5087	-124.0257	
			46.6003	-124.0371	Weigardt & Sons Inc.
			46.6007	-124.0360	
			46.6057	-124.0397	
TL-530	12112255530	2	46.6060	-124.0382	
			46.5079	124.0285	Randall Evans
			46.5085	124.0278	Heckes Clams Inc.
			46.5081	124.0260	
E-249	79005000249	5	46.5075	124.0262	
			46.5320	-124.0255	Taylor Resources Inc.
			46.5319	-124.0239	
			46.5331	-124.0239	
			46.5331	-124.0218	
E-215	79005000215	25	46.5347	-124.0217	
			46.5346	-124.0250	
			46.5590	-124.0187	
			46.5589	-124.0135	
			46.5609	-124.0137	Heckes Clams Inc.
			46.5610	-124.0127	
			46.5666	-124.0127	

			46.5667	-124.0191	
			46.5667	-124.0111	
			46.5738	-124.0131	
E-114	79005000113	35	46.5769	-124.0175	
			46.5769	-124.0210	
			46.5665	-124.0163	
			46.6104	-124.0396	Willapa Bay Shellfish
			46.6108	-124.0384	
			46.6139	-124.0387	
			46.6169	-124.0396	
E-148	79005000148	20	46.6188	-124.0379	
			46.6192	-124.0389	
			46.6163	-124.0416	
			46.6160	-124.0426	
			46.6126	-124.0405	
			46.6105	-124.0395	
			46.5591	-124.0247	
TL-153	13113755153	10	46.5625	-124.0241	
			46.5625	-124.0189	
			46.5590	-124.0187	
			46.5625	-124.0241	
TL-53.5	12110355053	15	46.5667	-124.0237	
			46.5667	-124.0191	
			46.5625	-124.0189	
			46.4344	-124.0184	Randall Evans
TL-339A	11111555339	0.5	46.4344	-124.0176	Heckes Clams Inc.
			46.4348	-124.0177	
			46.4349	-124.0183	

Annual Pre-Treatment Plan (Maps)

Figures 1-6 show the locations of proposed japonica treatments for 2020. In 2020 treatments occurred on bed TL-339a.

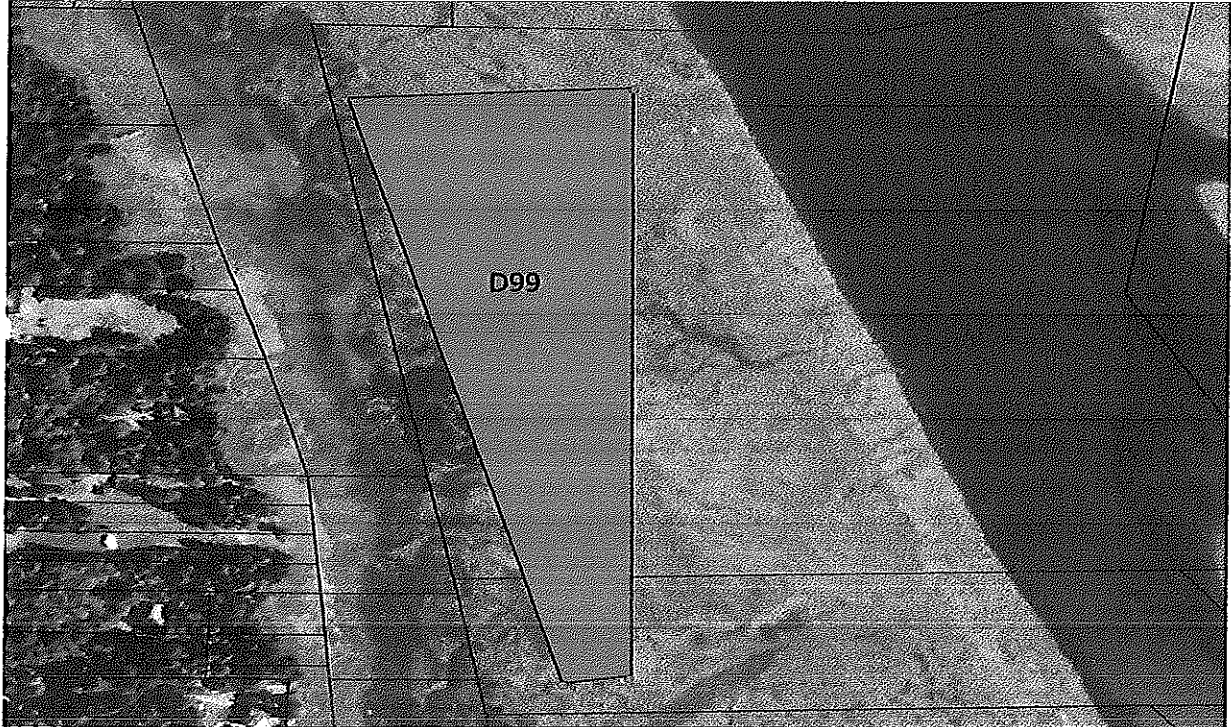


Figure 1. Parcel 790004000099.

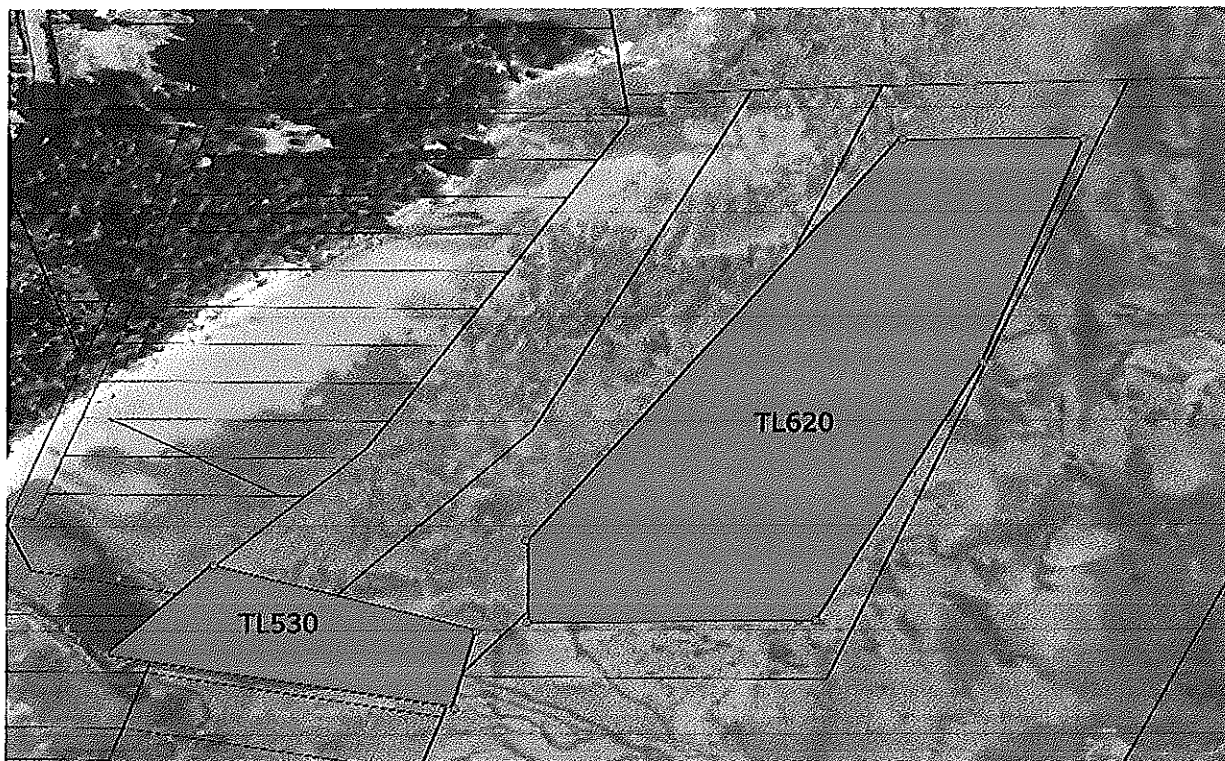


Figure 2. Parcels 12112255530, 12112256620



Figure 3. Parcels 7905000002



Figure 4. Parcel 79005000249.

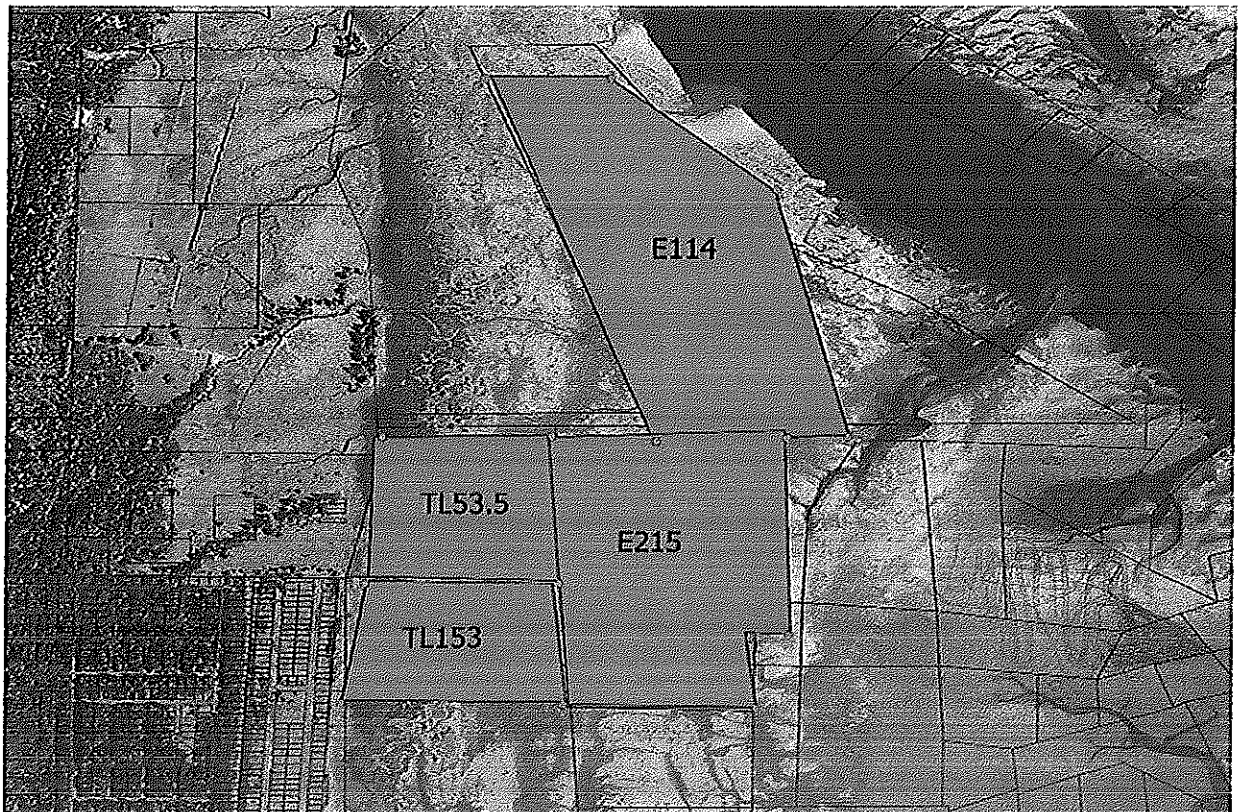


Figure 5. Parcels 79005000215, 79005000114, 12110355053 and 13113755153.

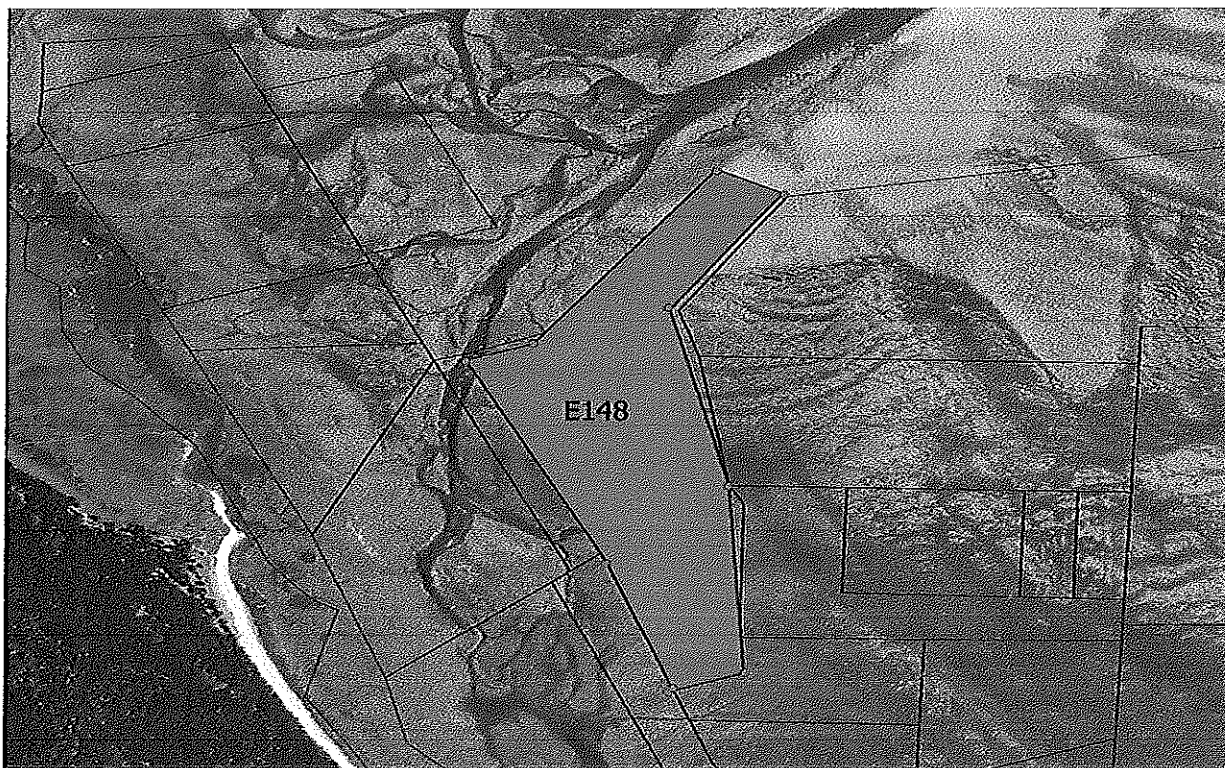


Figure 6. Parcel 79005000148.

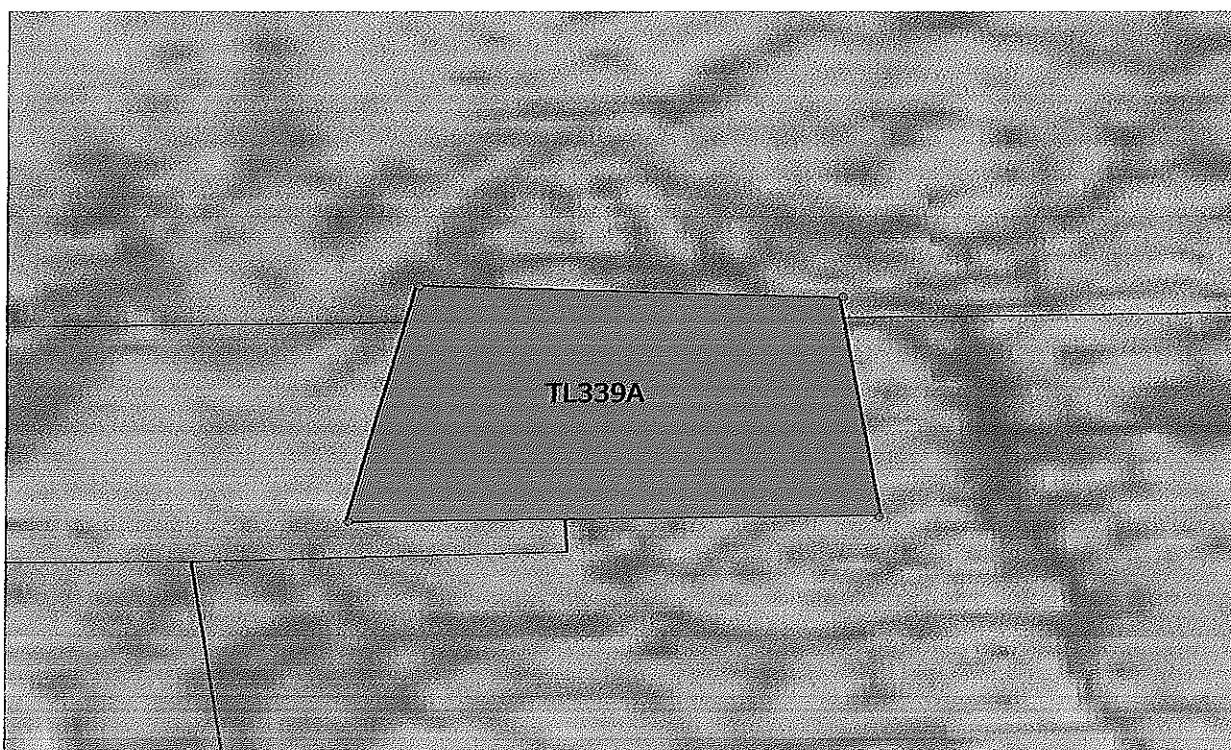


Figure 7. Parcel 11111555339.

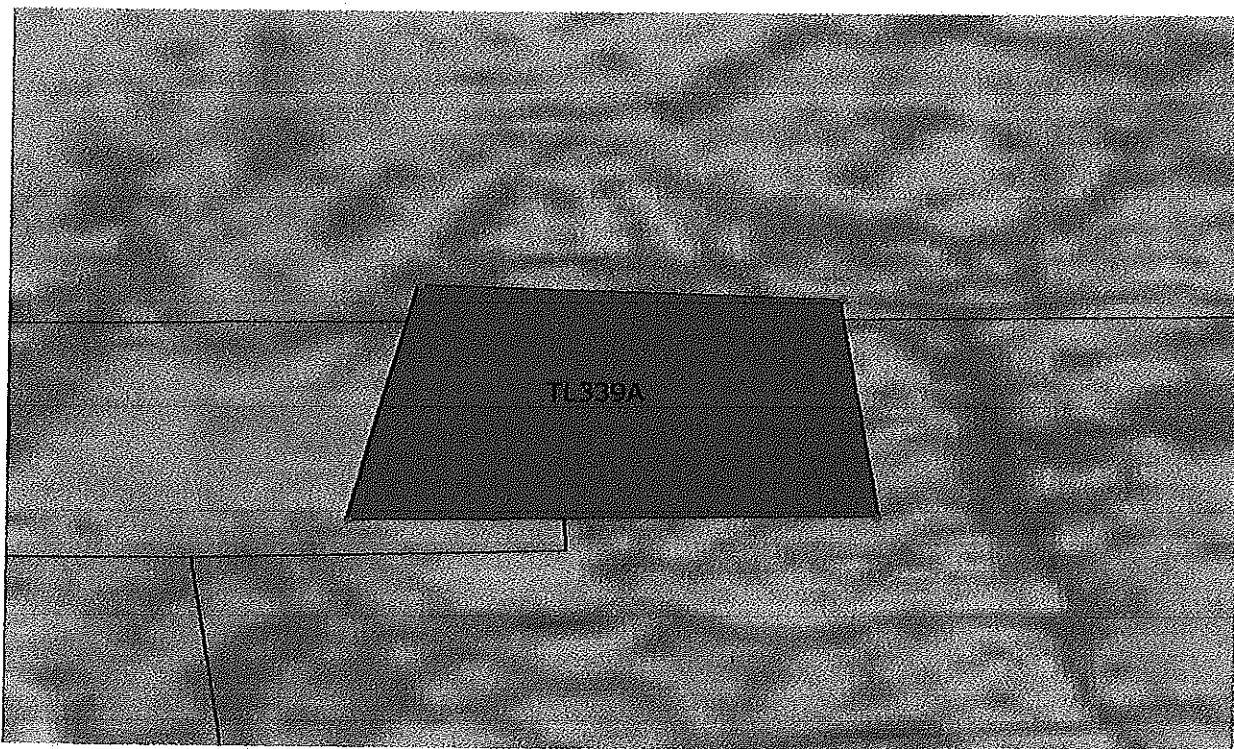


Figure 7. Parcel 11111555339.

Signature Requirements

I certify under penalty of law, that this document and all attachments were prepared under my direction or supervision in accordance with a system designed to assure that qualified personnel properly gathered and evaluated the Information submitted. Based on my inquiry of those persons directly responsible for gathering information, the information in the Pretreatment Plan is, to the best of my knowledge and belief, true, accurate, and complete and will be updated as necessary. I am aware that there are significant penalties for submitting false information, including the possibility of fine and imprisonment of knowing violations.

Brian Schultz

3-25-21

Signature

Date