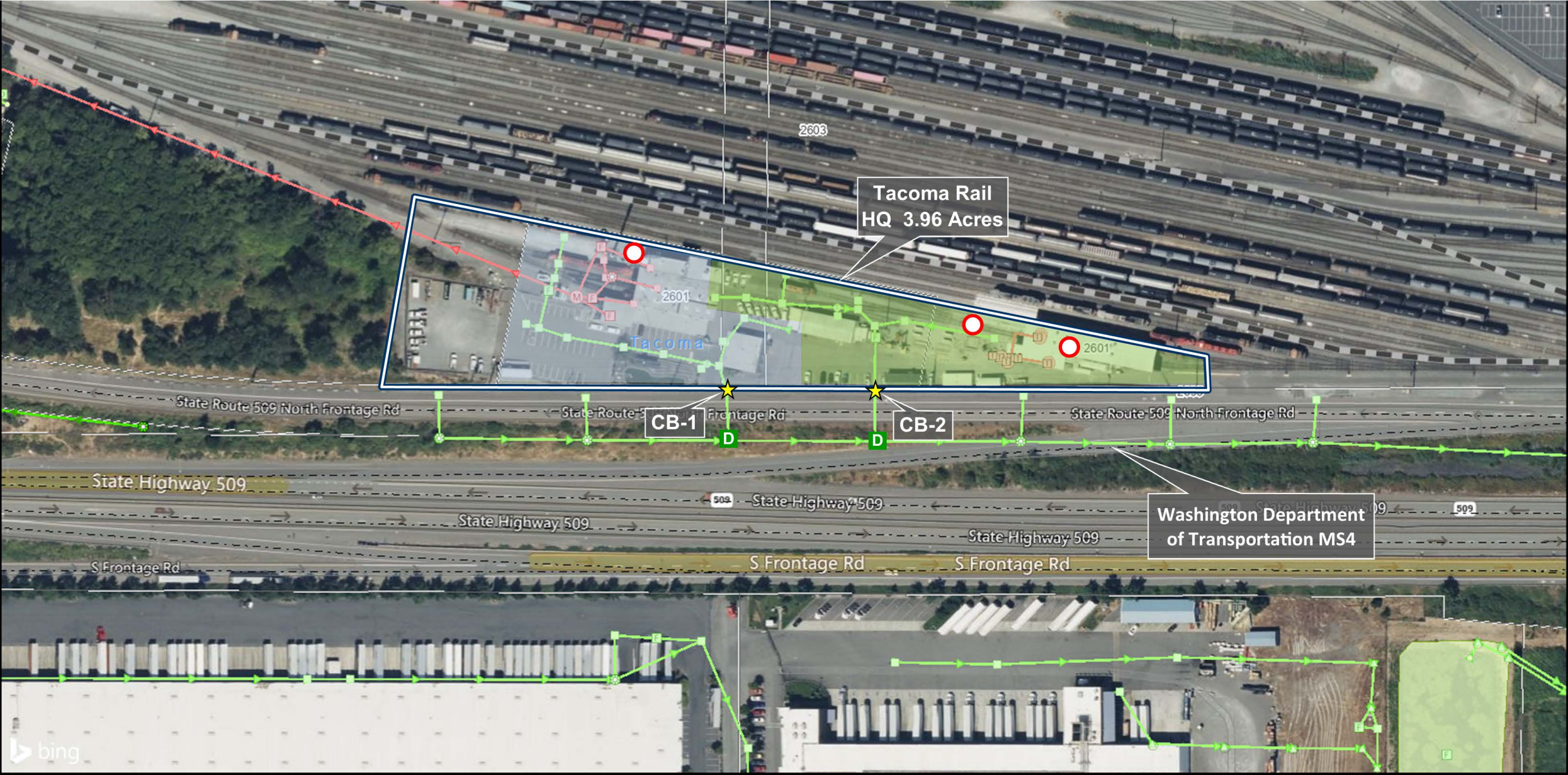


Tacoma Rail Headquarters

2601 SR 509 North Frontage Road
Tacoma, WA 98421



Tacoma Rail - SWPPP

Figure Title: Tacoma Rail Stormwater Map **Figure Date:** May 30, 2024

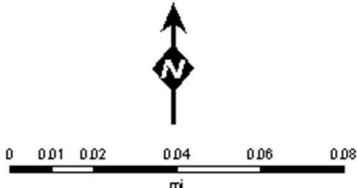
Figure Prepared By: Tacoma Power (James Bozic)

Aerial Imagery Information: AccessES - <https://esgis.cityoftacoma.org/accesses/>

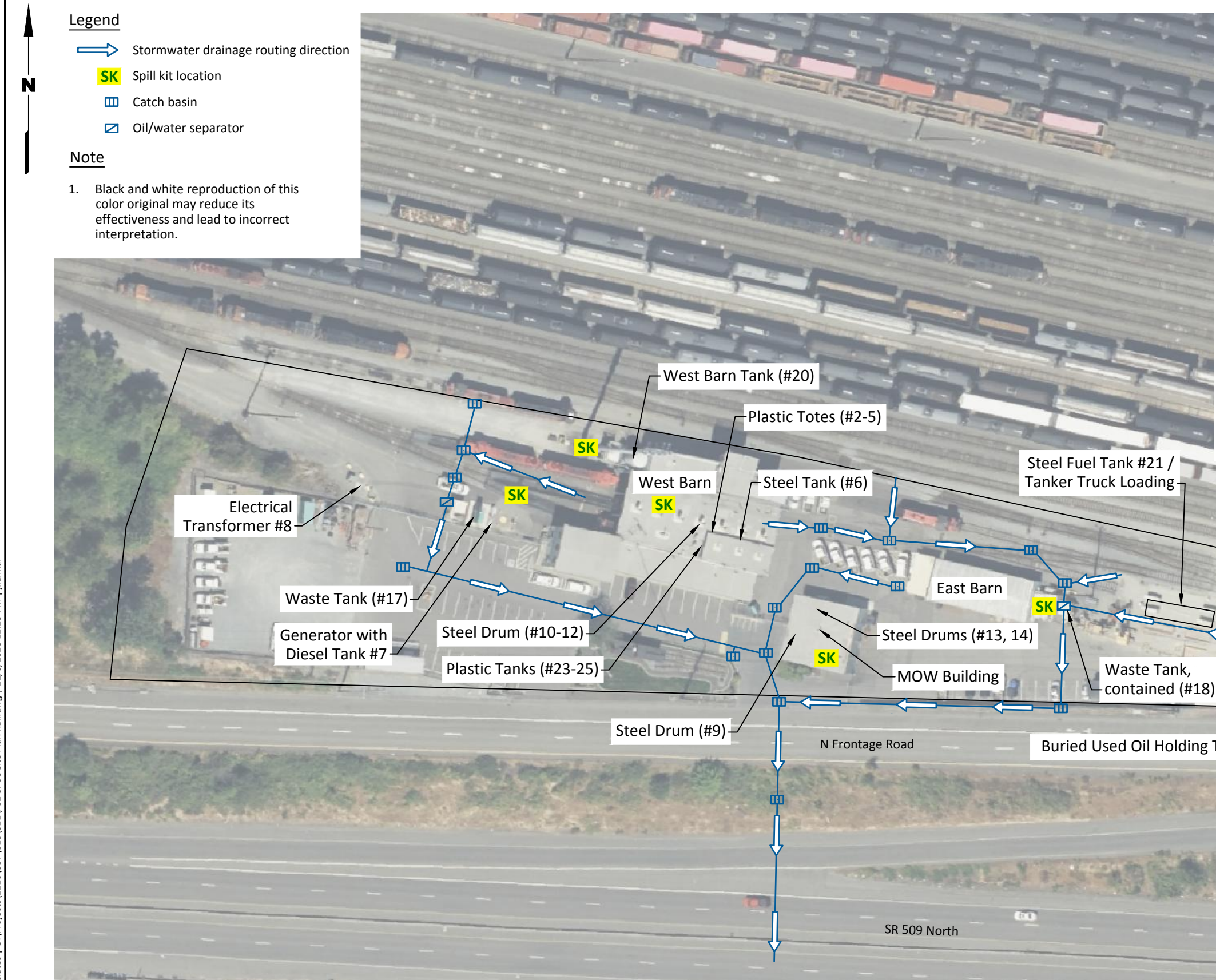
All drawings are approximate.

Figure Key

- | | |
|------------------------|---------------------------|
| Stormwater Line | Secondary Media Treatment |
| Stormwater Catch Basin | Sampling Point |
| Discharge Point | Fueling Areas |



Landau Associates | G:\Projects\1216\007\010\011\F02 SPCC Site Plan Rail.dwg | 12/6/2023 12:25 PM | jkalmar



Legend

- Stormwater drainage routing direction
- SK Spill kit location
- Catch basin
- Oil/water separator

Note

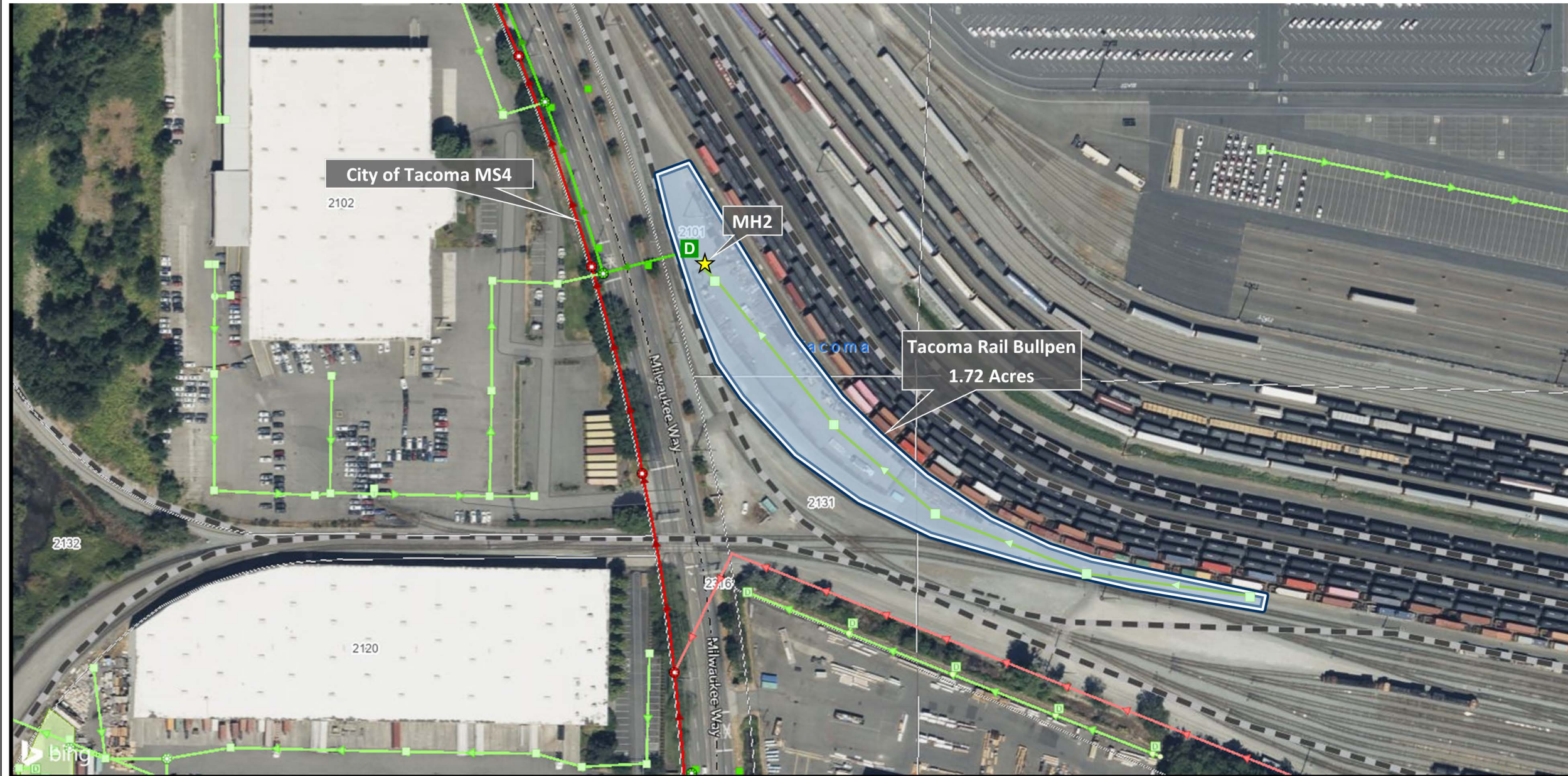
- Black and white reproduction of this color original may reduce its effectiveness and lead to incorrect interpretation.

Oil Containment Unit	Contents and Maximum Capacity (gallons)	Oil Containment Unit	Contents and Maximum Capacity (gallons)
1a	New Motor Oil (330)	13	Hydraulic (55)
1b	New Motor Oil (330)	14	New Motor Oil (55)
2	New Motor Oil (330)	15	Engine Oil (275)
3	New Motor Oil (330)	16	Engine Oil (275)
4	New Motor Oil (330)	17	Used Motor Oil (240)
5	New Motor Oil (330)	18	Used Motor Oil (240)
6	New Motor Oil (400)	19	Diesel Fuel (12,000)
7	Diesel Fuel	20	Diesel Fuel (10,000)
8	Transformer Oil	21	Diesel Fuel (40,000)
9	Used Motor Oil (55)	22	Used Motor Oil (3,000)
10	New or Used Oil (55)	23	New Motor Oil (120)
11	New or Used Oil (55)	24	New Motor Oil (120)
12	New or Used Oil (55)	25	New Motor Oil (120)

Source: City of Tacoma Department of Public Utilities; Bing Aerial Imagery 2023

Tacoma Rail Bullpen

2101 Milwaukee Way
Tacoma, WA 98421



Tacoma Rail - SWPPP

Figure Title: Tacoma Rail Stormwater Map **Figure Date:** May 30, 2024

Figure Prepared By: Tacoma Power (James Bozic)

Aerial Imagery Information: AccessES - <https://esgis.cityoftacoma.org/accesses/>

All drawings are approximate.

Figure Key

- | | |
|--|---|
|  Stormwater Line |  Secondary Media Treatment |
|  Stormwater Catch Basin |  Sampling Point |
|  Discharge Point | |

