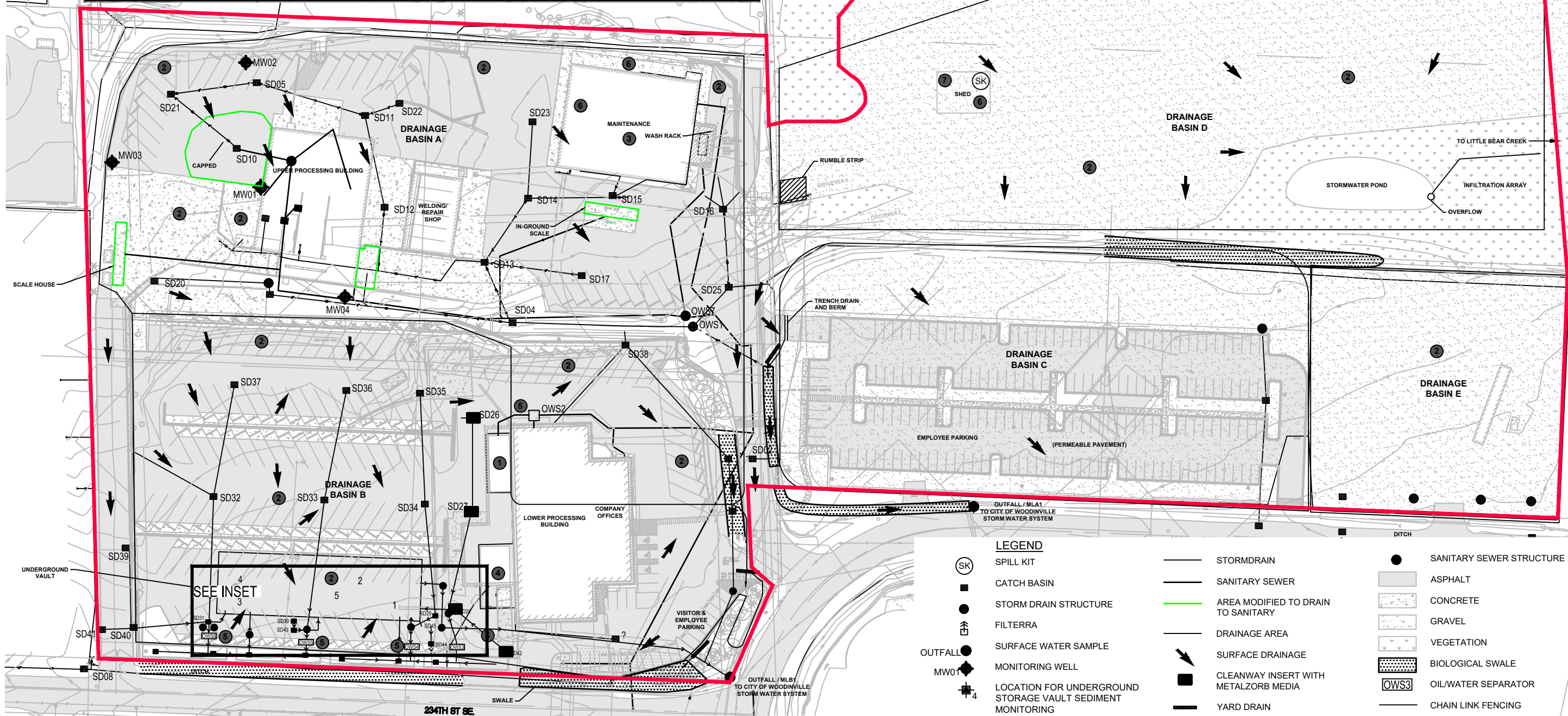
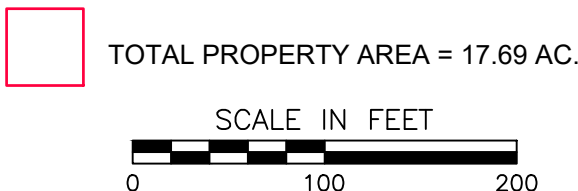


- 1 WASH AREA (COLLECTION VEHICLES/CONTAINERS)
- 2 OUTDOOR VEHICLE AND EQUIPMENT STORAGE & PARKING
- 3 VEHICLE AND EQUIPMENT MAINTENANCE
- 4 PAINT BOOTH
- 5 OIL/WATER SEPARATORS
- 6 LIQUID STORAGE IN BULK STORAGE TANKS & CONTAINERS
- 7 MANAGEMENT OF FUELS, OILS, AND AUTOMOTIVE FLUIDS



- LEGEND**
- (SK) SPILL KIT
 - CATCH BASIN
 - STORM DRAIN STRUCTURE
 - ⬆ FILTERRA
 - SURFACE WATER SAMPLE
 - MONITORING WELL
 - ⬆ OUTFALL / ML1 TO CITY OF WOODINVILLE STORM WATER SYSTEM
 - OUTFALL / ML1 TO CITY OF WOODINVILLE STORM WATER SYSTEM
 - STORMDRAIN
 - SANITARY SEWER
 - AREA MODIFIED TO DRAIN TO SANITARY
 - DRAINAGE AREA
 - SURFACE DRAINAGE
 - CLEANWAY INSERT WITH METALZORB MEDIA
 - YARD DRAIN
 - SANITARY SEWER STRUCTURE
 - ASPHALT
 - CONCRETE
 - GRAVEL
 - VEGETATION
 - BIOLOGICAL SWALE
 - OIL/WATER SEPARATOR
 - CHAIN LINK FENCING



CEC
Civil & Environmental Consultants, Inc.
4045 NW 64th Street · Suite 415 · Oklahoma City, OK 73116
Ph: 405.246.9411
www.cecinc.com

DRAWN BY: CMH CHECKED BY: AND
DATE: 01/27/2020 DWG SCALE: SEE SHEET

**WASTE MANAGEMENT
NORTH SOUND FACILITY**

OVERALL SITE PLAN

APPROVED BY: JS
PROJECT NO: 196-333

FIGURE NO.: **2**

P:\2019\196-333\--CADD\DWG\196333-Figure 2.dwg[LAYOUT1] LS:1/27/2020 -- charmed -- LP: 2/10/2020 7:43 PM