

Legend

- Stormwater Pre-treatment System
- Roof Drain
- Outfall
- Stormwater Drain
- Sample Point
- Emergency Generator (Diesel)
- Stormwater Inlet
- Stormwater Outlet
- Hydraulic Compactor
- Underground Stormwater Piping
- Surface Flow Direction
- Building/ Covered Structure
- Drainage Area
- Fire Pump Room (Diesel)
- Impervious Area
- Storm water underground infiltration detention basin
- Mobile Fueling Area
- Mobile Maintenance Area
- Mobile Washing Area
- Site Boundary

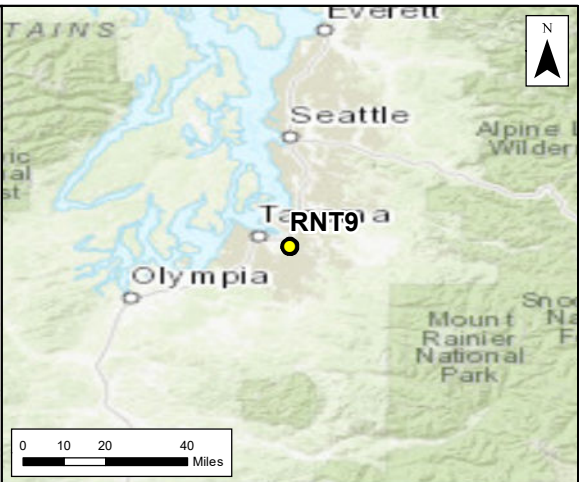
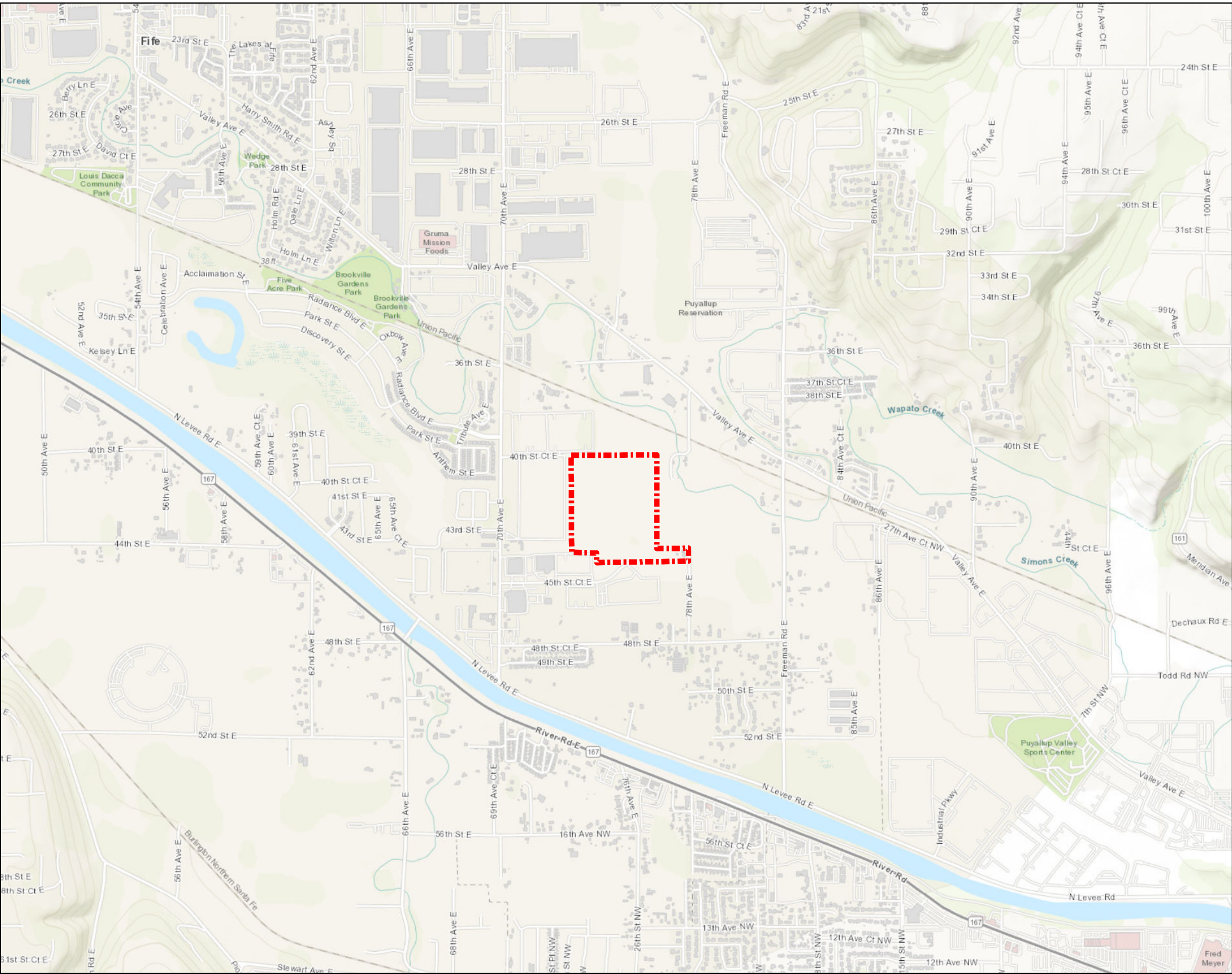
Notes:


1. Site area is approx. 41.94 acres.
2. Impervious area is approx. 36.16 acres.
3. Spill kits are located near areas of industrial activities and within 25 feet of fueling areas.
4. See Plan for details on authorized NSWDs.

Figure 2
Drainage Area Site Map
Site RNT9
7449 45th Street Ct. E
Fife, Washington 98424



FILE: \\SCUSPRDGI\\SF501\\Data\\US\\Projects\\A-C\\Amazon\\Amazon SWPPPs BOSDMM\\maps\\WASHINGTON\\RNT9\\Figure 1 RNT9.mxd REVISED: 06/11/2024 SCALE: 1:24,000 when printed at 11x17
DRAWN BY: Cristian La Rosa
Source: Esri



Legend
 Site Boundary

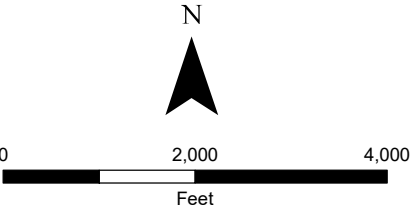


Figure 1
General Location Map
Site RNT9
7449 45th Street Ct. E
Fife, Washington 98424

