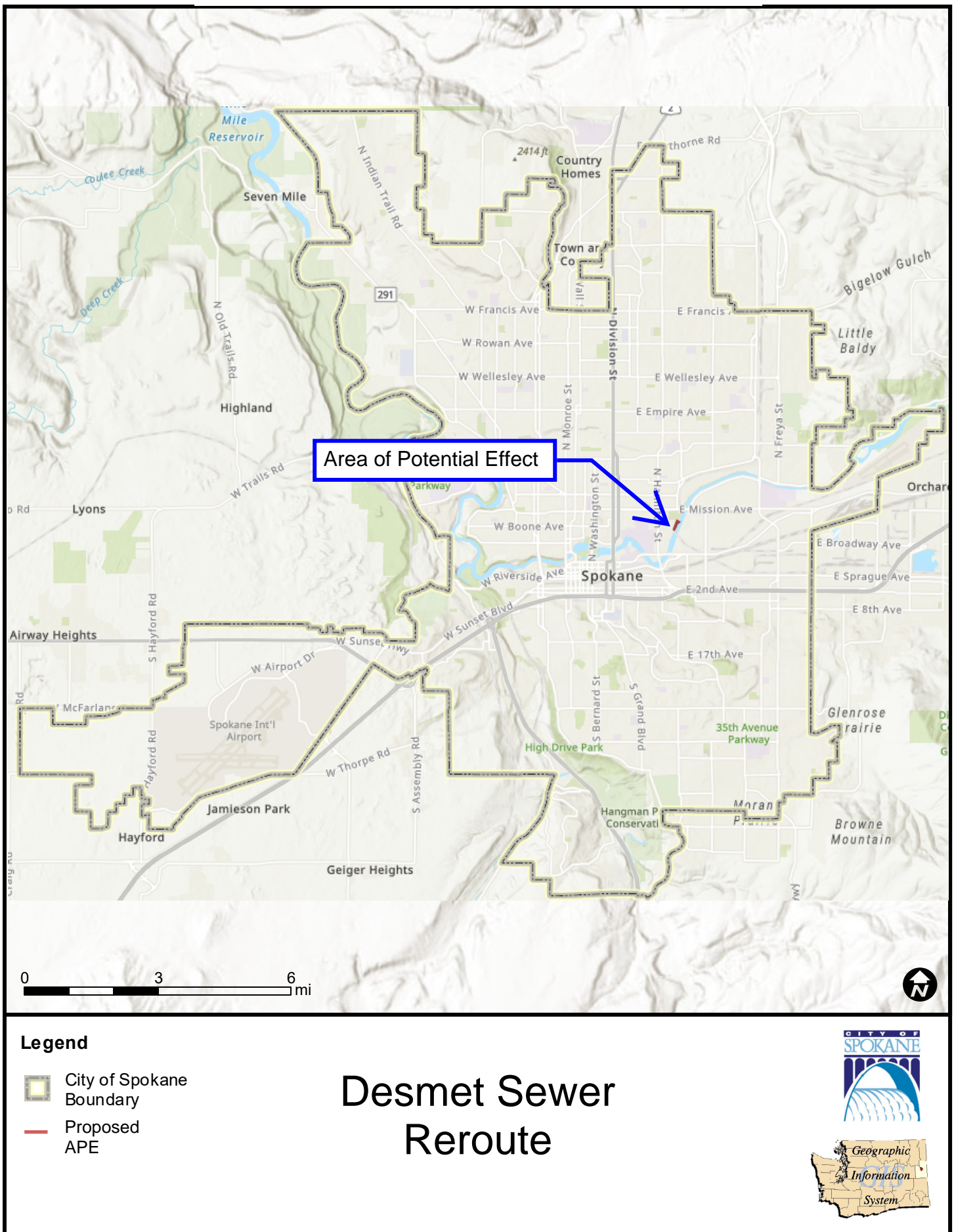
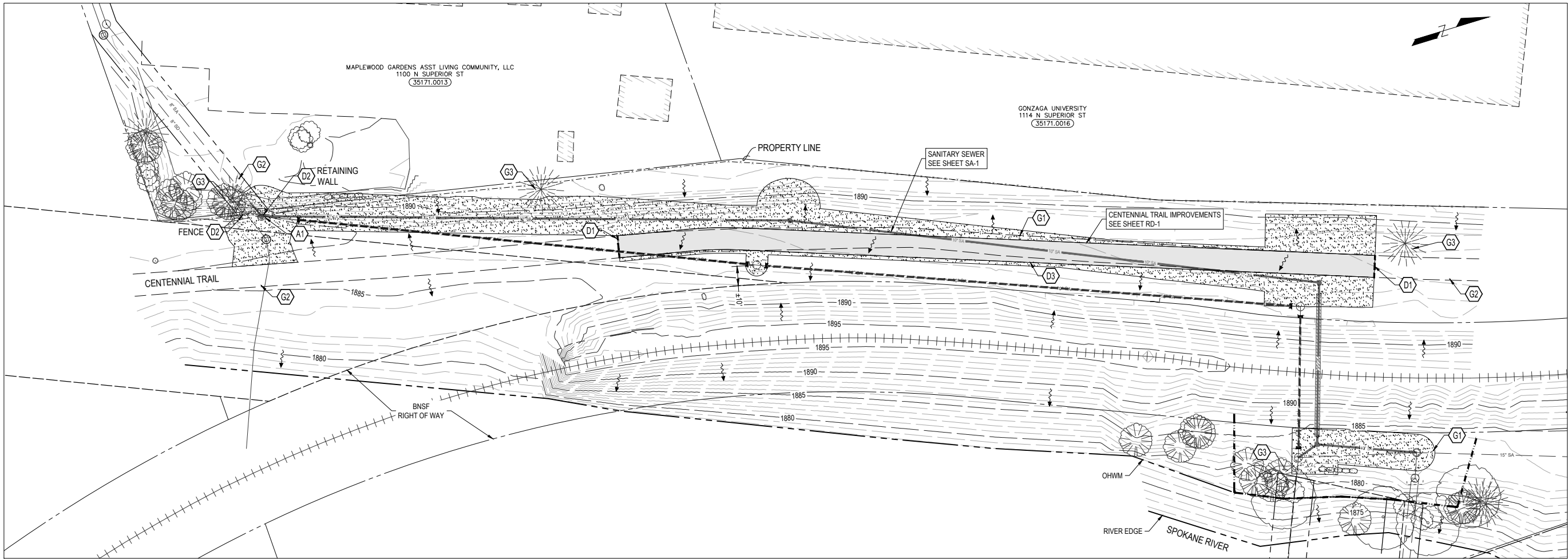


Figure 1. Vicinity Map

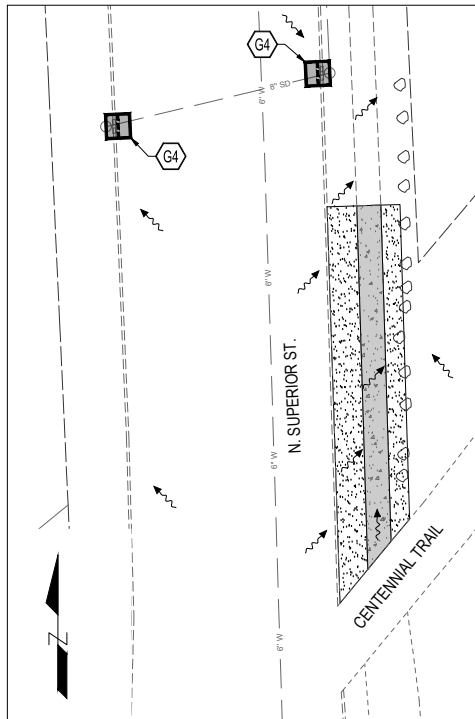


P:\Team1\PROJECTS - TEAM 1\2020079 Desmet Sewer\03\_CAD WORLD\05\_PRODUCTION DRAWINGS - DESIGN\2020-079\_MA.dwg PLOT DATE: Dec 02, 2024 - 7:44AM



### CENTENNIAL TRAIL

Scale: 1" = 30'



### SUPERIOR SIDEWALK CONNECTION

Scale: 1" = 20'

#### GENERAL NOTES:

- SEE TRAFFIC PLANS FOR ALL SIGN, SIGNAL, AND STRIPING WORK.
- ALL STREET ALIGNMENTS SHOWN ARE PROJECT ONLY AND NOT BASED ON ROW.
- SEE APPENDIX E FOR TREE REMOVAL, ROOT TREATMENT, PROTECTION ZONE, & PRUNING.
- ACTUAL ASPHALT LIMITS SHALL BE AS DESIGNATED BY THE FIELD ENGINEER.
- UTILITY INFORMATION SHOWN IN THIS PLAN SET IS FOR REFERENCE ONLY. THE CONTRACTOR IS RESPONSIBLE TO LOCATE AND VERIFY POTENTIAL UTILITY CONFLICTS PRIOR TO CONSTRUCTION REGARDLESS WHETHER OR NOT THE UTILITY IS INDICATED TO BE POTHOLED.
- THE CONTRACTOR SHALL BE RESPONSIBLE TO PROTECT IN PLACE ALL UTILITIES, APPURTENANCES, AND SURFACE FEATURES NOT SHOWN TO BE DEMOLISHED OR REMOVED. THE CONTRACTOR SHALL REPAIR ANY SUCH ITEMS DAMAGED BY THE CONTRACTOR'S OPERATIONS TO THE SATISFACTION OF THE OWNER AT NO COST TO THE CONTRACTING AGENCY.
- PRIOR TO CONSTRUCTION, CONTRACTORS "ESC LEAD" SHALL PROVIDE A TEMPORARY EROSION AND SEDIMENT CONTROL (TESC) PLAN IN WRITING TO THE FIELD ENGINEER WHICH MEETS CITY AND STATE REGULATIONS.
- FOR ABANDONMENT OF PIPE AND STRUCTURES, SEE SEWER SHEETS.

#### CONSTRUCTION CALLOUTS

DESIGNATED BY HEX

#### GENERAL CONSTRUCTION

- G1 - REFERENCE & REESTABLISHMENT SURVEY MONUMENT
- G2 - CLASSIFICATION & PROTECTION OF SURVEY MONUMENT
- G3 - TREE PROTECTION SCOPE OF WORK (SEE APPENDIX E)
- G4 - INLET PROTECTION (STRAW WATTLES)

#### SEWER REMOVALS, ABANDON & ADJUSTMENTS

- A1 - REMOVE MANHOLE, CATCH BASIN, OR DRYWELL
- A2 - PLUGGING EXISTING PIPE
- A3 - REMOVE EXISTING >12 IN. TO <30 IN. DIA PIPE
- A4 - ABANDON EXISTING MANHOLE, CATCH BASIN OR DRYWELL
- A5 - ABANDON EXISTING SEWER (UNDER BNSV TRACKS)

D4 - REMOVE MANHOLE, CATCH BASIN, OR DRYWELL

#### DEMOLITION

- D1 - SAWCUTTING FLEXIBLE PAVEMENT
- D2 - REMOVAL OF STRUCTURE AND OBSTRUCTION (SEE STRUCTURES AND OBSTRUCTION LIST, IN SPEC)
- D3 - TOTAL ASPHALT REMOVAL & REPLACEMENT (SEE SHEET RD-1)

#### HYDROSEED NOTE:

TO PREVENT SOIL EROSION, CONTRACTOR SHOULD APPLY HYDROSEED TO DISTURBED AREAS. PLACE TOPSOIL TYPE "A", 2 INCH THICK IN ALL HYDROSEED AREAS. UNLESS OTHERWISE SPECIFIED ON THE PLANS OR IN THE SPEC, USE THE FOLLOWING:

#### HYDROSEED MIXES:

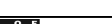

NO MAINTENANCE MEADOW GRASS:  
13% BLUE WILD RYE  
24% IDAHO FESCUE  
8% TUFTED HAIRGRASS  
25% SLENDER WHEATGRASS  
30% MOUNTAIN BROME

#### LEGEND

	SHADED AREAS INDICATE PROPOSED HMA PAVING LIMITS	BNSF	BURLINGTON NORTHERN SANTA FE
	SHADED AREAS INDICATE PROPOSED CURB/SIDEWALK IMPROVEMENTS	OHWM	ORDINARY HIGH WATER MARK
	HYDROSEEDING		STRAW WATTLE AT INLETS (±3LF EA)
			SILT FENCE
			SILT FENCE
			DRAINAGE FLOW DIRECTION

**BID DRAWING  
NOT FOR CONSTRUCTION**

DR-1  
1 OF 1

REVISIONS - RECORD DWG STATUS			NAV D88 = (OLD CBM ELEV.) - (13.13) AS OF JANUARY, 2000 USE NORTH AMERICAN VERTICAL DATUM OF 1988 (NAV D88)				CURRENT C.O.S. DESIGN STANDARDS ADOPTED JAN. 2022			CITY OF SPOKANE, WASHINGTON DEPARTMENT OF ENGINEERING SERVICES 808 WEST SPOKANE FALLS BLVD. SPOKANE, WASHINGTON 99201-3343 (509) 625-6700		
			NAV D88 ELEV. : 1898.500		BENCH MARK LOCATION: BOONE & SUPERIOR EAST CORNER OF BOTTOM STEP SOUTH DOOR HOLY NAMES ACADAMY		BY				DATES	
			CBM NO. : 12N 11E									
			NAV D88 DATUM				SCALE				HORIZONTAL SCALE (22 x 34)	PLAN & PROFILE
DATE	BY	DESCRIPTION - INCLUDE PROJ. # IF DIFFERENT				VERTICAL SCALE (22 x 34)		1"= 30'			DRAWN: JG	05/2024
									APPROVED: K LW	05/2024		

PROJECT NAME: DESMET SEWER		TYPE OF IMPROVEMENT: ROAD	
SHEET NAME: DEMOLITION AND TESC PLAN		PROJECT NO. 2020079	GEO. LOCATION NE 1/4 QTR 17-25-43
PROJECT LIMITS: CENTENNIAL TRAIL & BNSF RAILROAD			

CALL 811 BEFORE YOU DIG or 1-800-424-5555