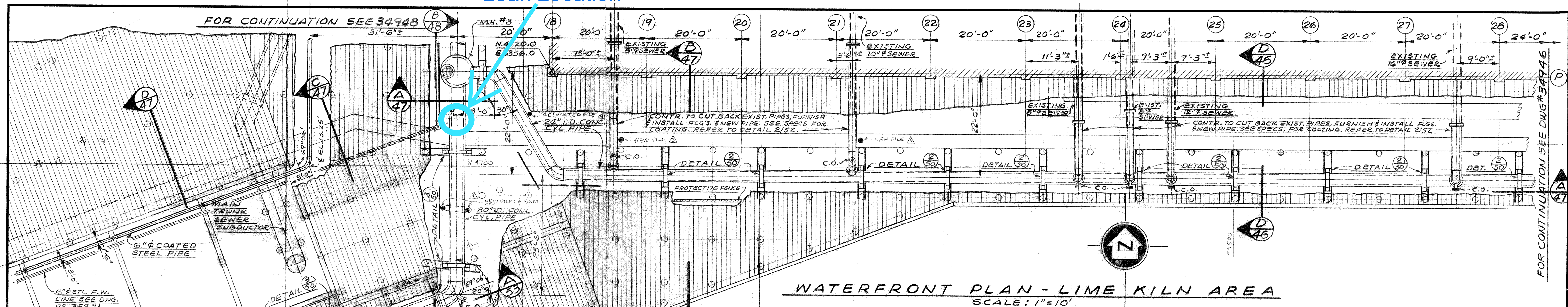
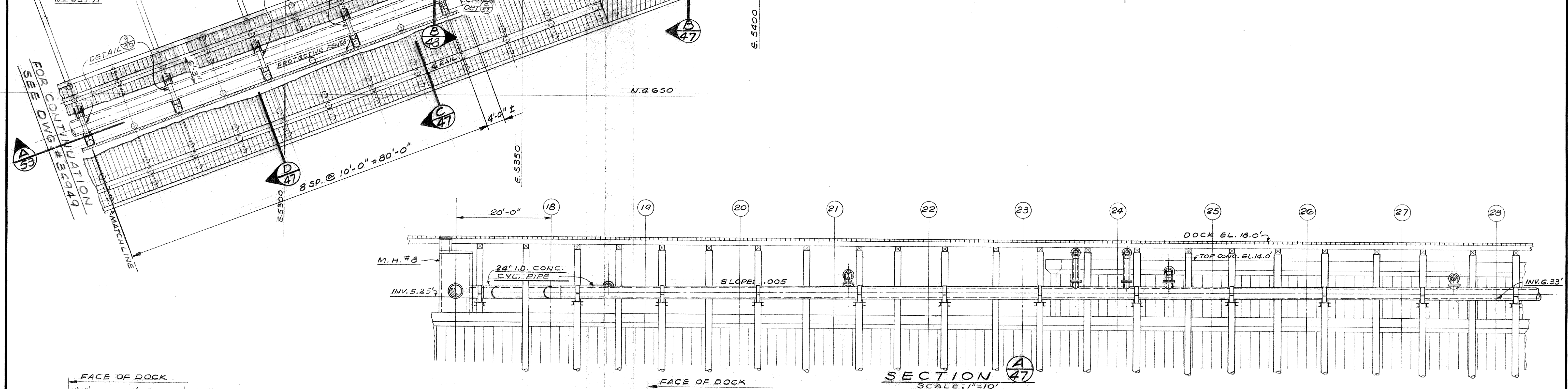


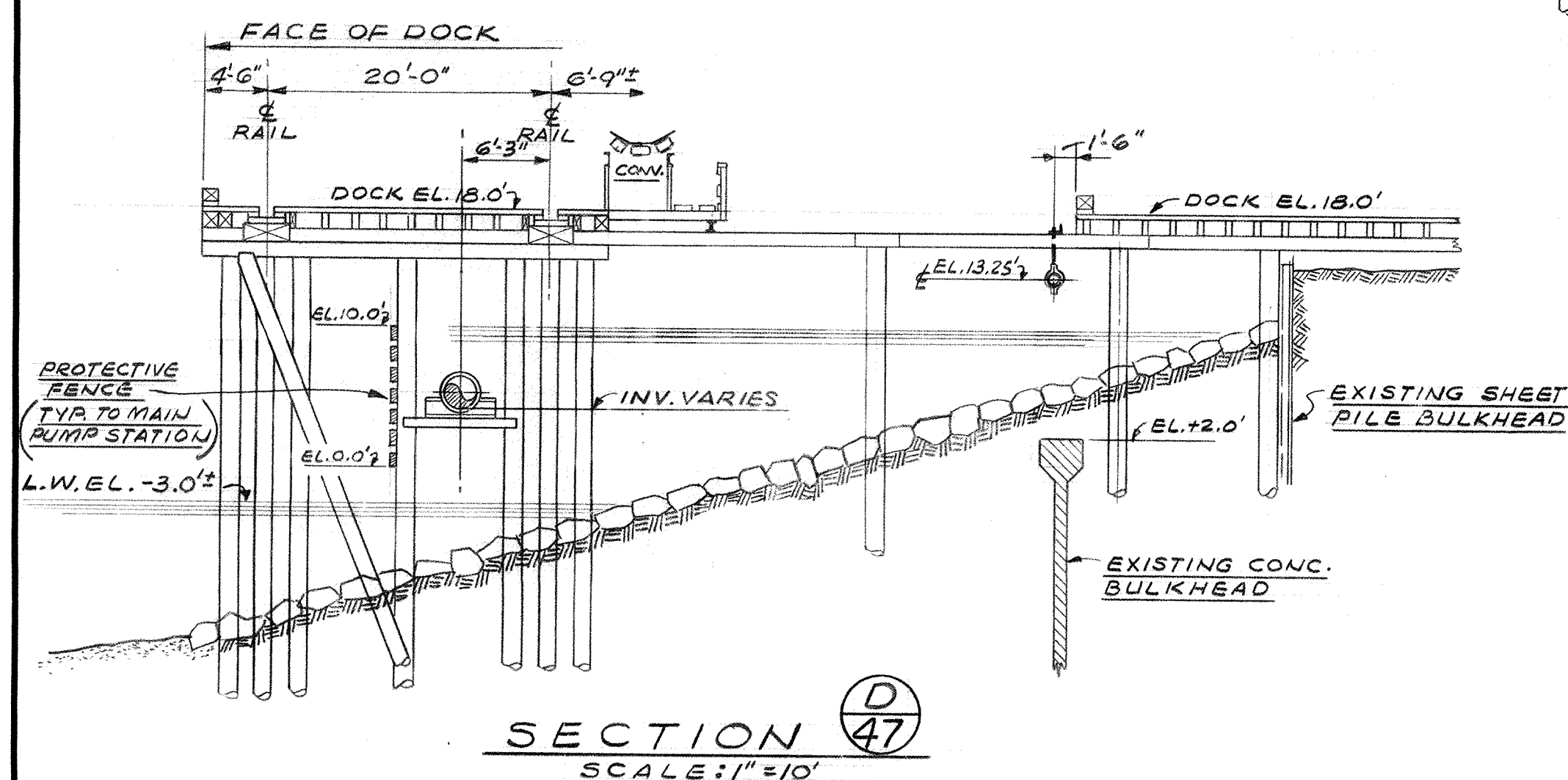
Leak Location



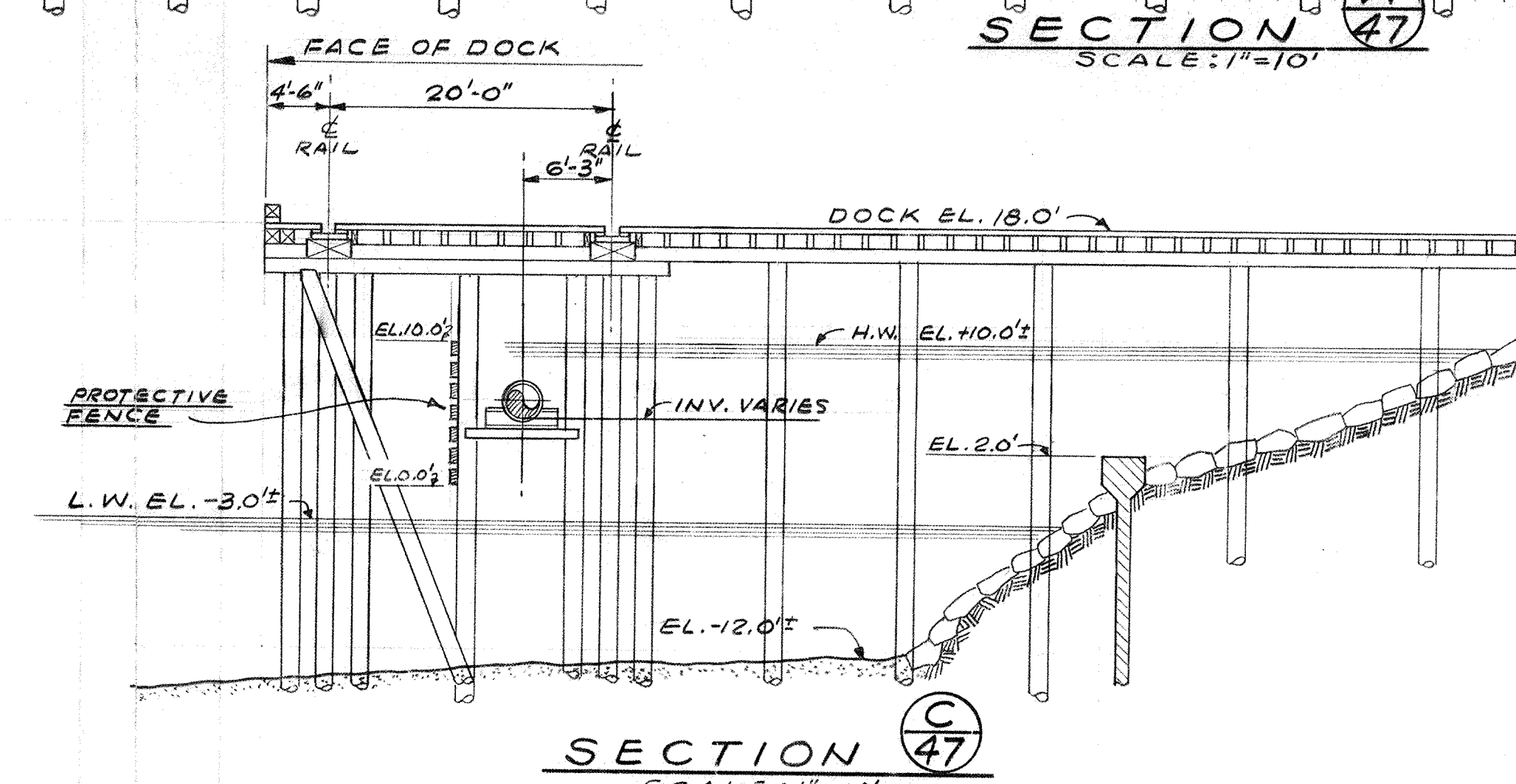
WATERFRONT PLAN - LIME KILN AREA
SCALE: 1"=10'



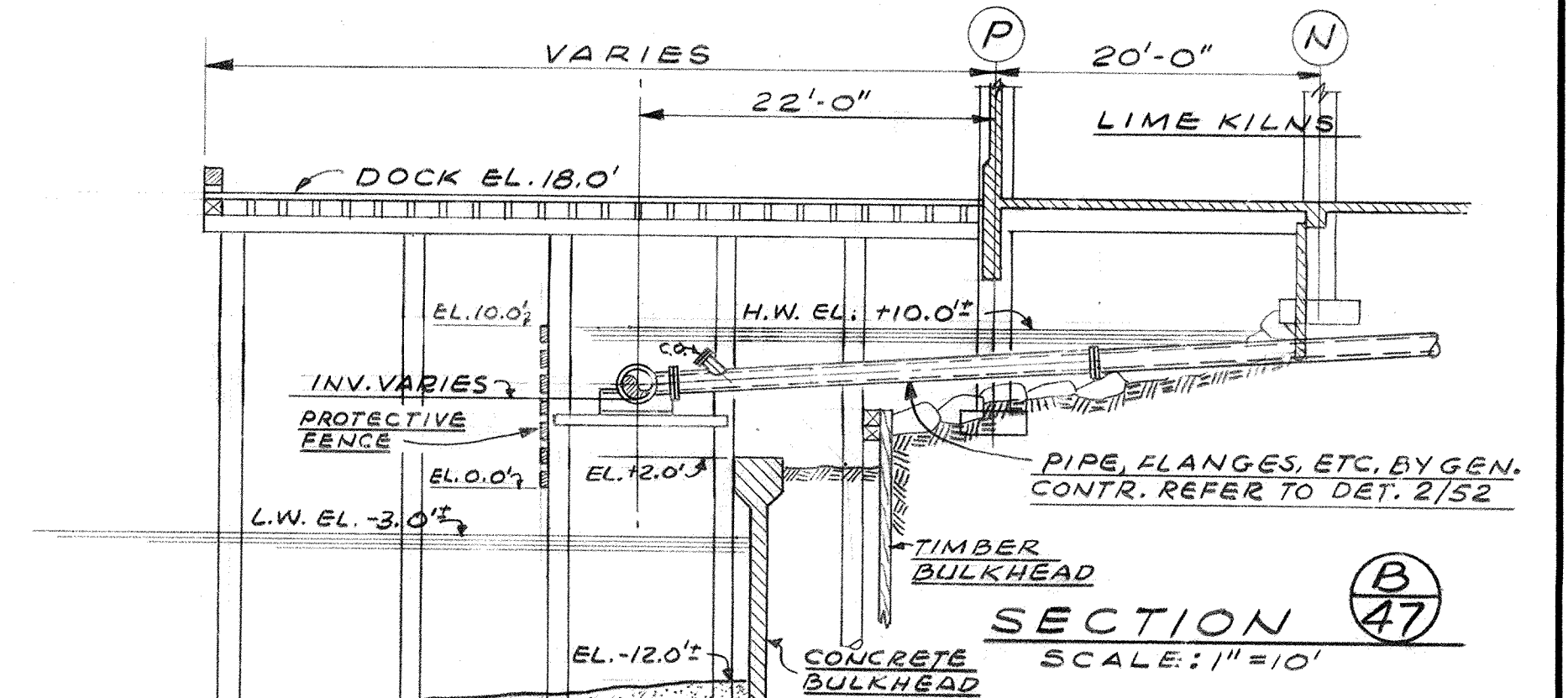
SECTION A-A
SCALE: 1"=10'



SECTION B-B
SCALE: 1"=10'



SECTION C-C
SCALE: 1"=10'



SECTION D-D
SCALE: 1"=10'

GENERAL NOTES
DIMENSIONS & LOCATIONS OF EXISTING PILING ARE SHOWN APPROXIMATELY ONLY AND HAVE TO BE VERIFIED IN FIELD BEFORE FABRICATION OF PIPE SUPPORTS.
O INDICATES EXISTING PILE.
PROTECTIVE FENCE - CONSISTS OF 4x12 CREOSOTE TREATED TIMBERS, 20FT. LENGTHS SPACED 6" APART. FASTEN TO PILES WITH (3) 8"x5/16" GALVANIZED SPIKES PER EACH PILE CONTACT.

| REVISIONS | | | | CROWN ZELLERBACH CORPORATION | | | |
|-----------------|----------------------------------------|-------------|----------|--------------------------------|--|--------------|--|
| NO. | DESCRIPTION | BY | DATE | CENTRAL ENGINEERING OFFICE | | | |
| 1 | GENERAL REVISION | G.S. | 12/20/70 | SEATTLE, WASHINGTON | | | |
| 2 | ADDED 6" SLUDGE LINE | G.S. | 12/20/70 | MILL PORT TOWNSEND, WASHINGTON | | | |
| 3 | REVISED PROTECTIVE FENCE | G.S. | 12/20/70 | SUBDIVISION | | | |
| 4 | ADDED NEW PILE - 19820 - OVER 20' LINE | G.S. | 12/20/70 | JOB TITLE | | | |
| | | | | PRIMARY EFFLUENT TREATMENT | | | |
| DRAWN G. SAYER | | CHECKED | | JOB NO. | | A. F. E. NO. | |
| DATE 24 NOV. 69 | | DATE | | FILE NO. | | DRAWING NO. | |
| | | SCALE NOTED | | PT. 1991/1305 | | 34947 | |