

NW 1/4 SECTION 29, TOWNSHIP 28 N, RANGE 5 E, W.M.

MILAGRO II PRD

PFN 23-111975 LDA PFN 22-112728 PSD/SPA

CONSTRUCTION STORMWATER POLLUTION PREVENTION PLAN (SWPPP)

A CONSTRUCTION STORMWATER POLLUTION PREVENTION PLAN HAS BEEN PROVIDED AS SHEET C4, EACH OF THE 13 CONSTRUCTION SWPP ELEMENTS HAS BEEN CONSIDERED AND DISCUSSED BELOW.

ELEMENT 1: PRESERVE VEGETATION/ MARK CLEARING LIMITS: VEGETATION SHALL BE PRESERVED (BMP C101) BY RESTRICTING CONSTRUCTION ACTIVITIES OUTSIDE OF THE CLEARING LIMITS SHOWN. CLEARING LIMITS SHALL BE MARKED WITH A HIGH VISIBILITY PLASTIC OR FABRIC SILT FENCE (BMP C103).

ELEMENT 2: ESTABLISH CONSTRUCTION ACCESS: A STABILIZED CONSTRUCTION ENTRANCE (BMP C105) WILL BE PROVIDED AT THE LOCATION OF PROPOSED ROAD A.

ELEMENT 3: CONTROL FLOW RATES: FLOW RATES SHALL BE CONTROLLED BY THE PROPOSED DETENTION/WETVAULT LOCATED IN TRACT 999 (EDDS STANDARD DRAWING 5-280) AND WILL BE PUMPED OUT AND DISPOSED OF AT AN APPROVED LOCATION.

ELEMENT 4: INSTALL SEDIMENT CONTROLS: SEDIMENT SHALL BE CONTROLLED BY A SILT FENCE (BMP C103) AT THE DOWNSLOPE EDGE OF THE CLEARING LIMITS.

ELEMENT 5: STABILIZE SOILS: UNWORKED SOILS SHALL BE STABILIZED WITH MULCHING (BMP C121), NETS AND BLANKETS (BMP C122), PLASTIC COVERING (BMP C123) AND/ OR DUST CONTROL (BMP C140) MEASURES. FINAL SITE STABILIZATION WILL BE ACHIEVED THROUGH TEMPORARY AND PERMANENT SEEDING (BMP C120).

ELEMENT 6: PROTECT SLOPES: SLOPES WILL BE PROTECTED WITH TEMPORARY AND PERMANENT SEEDING (BMP C120) AND/ OR MULCHING (BMP C121).

ELEMENT 7: PROTECT DRAIN INLETS: DRAIN INLETS WILL BE PROTECTED WITH A CATCH BASIN FILTER INSERT (BMP C220).

ELEMENT 8: STABILIZE CHANNELS AND OUTLETS: NO CHANNELS OR OUTFALLS AFFECTED BY THIS PROJECT.

ELEMENT 9: CONTROL POLLUTANTS: CONTRACTOR SHALL IMPLEMENT CONCRETE HANDLING (BMP C151) AND MATERIAL STORAGE, DELIVERY, AND CONTAINMENT (BMP C153) MEASURES AS WELL AS OTHER APPROPRIATE POLLUTION SOURCE CONTROL MEASURES IN AREAS OF CONSTRUCTION EQUIPMENT MAINTENANCE OR FUELING, HANDLING OR STORAGE OF WASTE MATERIALS, CONSTRUCTION DEBRIS, FERTILIZERS, AND CHEMICALS; AND OTHER ACTIVITIES THAT MAY CONTRIBUTE POLLUTANTS TO STORMWATER. THE FOLLOWING SPECIFIC REQUIREMENTS APPLY:

A) COVER, CONTAINMENT, AND PROTECTION FROM VANDALISM SHALL BE PROVIDED FOR ALL CHEMICALS, LIQUID PRODUCTS, PETROLEUM PRODUCTS, AND OTHER MATERIALS THAT HAVE POTENTIAL TO POSE A THREAT TO HUMAN HEALTH OR THE ENVIRONMENT.

B) ON-SITE FUELING TANKS SHALL INCLUDE SECONDARY CONTAINMENT.

C) MAINTENANCE, FUELING AND REPAIR OF HEAVY EQUIPMENT AND VEHICLES SHALL BE CONDUCTED USING SPILL PREVENTION AND CONTROL MEASURES CONSISTENT WITH VOLUME IV, CHAPTERS 2 AND 3.

D) CONTAMINATED SURFACES SHALL BE CLEANED IMMEDIATELY FOLLOWING ANY SPILL INCIDENT.

E) APPLICATION OF FERTILIZERS AND PESTICIDES SHALL BE CONDUCTED IN A MANNER AND AT APPLICATION RATES THAT WILL NOT RESULT IN LOSS OF CHEMICAL TO STORMWATER RUNOFF. MANUFACTURERS' LABEL REQUIREMENTS FOR APPLICATION RATES AND PROCEDURES SHALL BE FOLLOWED.

F) BMP'S SHALL BE USED TO PREVENT CONTAMINATION OF STORMWATER RUNOFF BY PH MODIFYING SOURCES. THESE SOURCES INCLUDE, BUT ARE NOT LIMITED TO, BULK CEMENT, CEMENT KILN DUST, FLY ASH, NEW CONCRETE WASHING APPROVED TREATMENT, CURING WATERS GENERATED FROM CONCRETE GRINDING AND SAWING, EXPOSED AGGREGATE PROCESSES, DEWATERING CONCRETE VAULTS, CONCRETE PUMPING AND MIXER WASHOUT/ WATER.

G) CONCRETE TRUCK CHUTES, PUMPS, AND INTERNALS SHALL BE WASHED OUT ONLY INTO FORMED AREAS AWAITING INSTALLATION OF CONCRETE. UNUSED CONCRETE REMAINING IN THE TRUCK AND PUMP SHALL BE RETURNED TO THE ORIGINATING BATCH PLANT FOR RECYCLING. WASHDOWN FROM CONCRETE HAND TOOLS AND WORK AREAS SHALL NOT DRAIN DIRECTLY TO NATURAL OR CONSTRUCTED STORMWATER CONVEYANCES. WHEN NO FORMED AREAS ARE AVAILABLE, WASHWATER AND LEFTOVER PRODUCT SHALL BE CONTAINED IN A LINED CONTAINER AND DISPOSED OF IN A MANNER THAT DOES NOT VIOLATE GROUNDWATER OR SURFACE WATER QUALITY STANDARDS.

H) WHERE FEASIBLE, AND NOT IN CONFLICT WITH INTERNATIONAL FIRE CODE, STORE POTENTIAL STORMWATER POLLUTANT MATERIALS INSIDE A BUILDING OR UNDER A COVER AND/OR CONTAINMENT. LIQUID AND APPLICABLE SOLID MATERIALS MUST BE STORED IN CONTAINERS SUITABLE FOR THE CONTENTS AND INSPECTED FOR CORROSION, STRUCTURAL FAILURE, TIGHT FITTING LIDS, LEAKS AND OVERFILLS. STORE MATERIALS IN AREAS SLOPING AWAY FROM STORM DRAINAGE SYSTEMS OR SURFACE WATERS. SWEEP AND CLEAN THE JOB SITE REGULARLY TO PREVENT BUILDUP OF CONTAMINATING MATERIALS. PROMPTLY CLEAN UP SOLID AND LIQUID POLLUTANT LEAKS AND SPILLS AND DISPOSE OF IN A MANNER CONSISTENT WITH AND ALL OTHER FEDERAL, STATE, AND LOCAL REGULATIONS IN ORDER TO PREVENT STORMWATER POLLUTION.

ELEMENT 10: CONTROL DE-WATERING: THERE ARE NO DEWATERING OPERATIONS PLANNED FOR THIS PROJECT.

ELEMENT 11: MAINTAIN BMP'S: BMP'S SHALL BE INSPECTED AND MAINTAINED BY THE CONTRACTOR DURING CONSTRUCTION AND REMOVED WITHIN 30 DAYS AFTER THE CITY DETERMINES THAT THE SITE IS STABILIZED, PROVIDED THAT TEMPORARY BMP'S MAY BE REMOVED WHEN THEY ARE NO LONGER NEEDED.

ELEMENT 12: MANAGE THE PROJECT: THIS PLAN SHALL BE FULLY IMPLEMENTED AT ALL TIMES AND MODIFIED WHENEVER THERE IS A CHANGE IN DESIGN, CONSTRUCTION, OPERATION, OR MAINTENANCE AT THE

CONSTRUCTION SITE THAT HAS OR COULD HAVE A SIGNIFICANT EFFECT ON THE DISCHARGE OF POLLUTANTS TO WATERS OF THE STATE.

ELEMENT 13: PROTECT LOW IMPACT DEVELOPMENT (LID) BMP'S: PERMITTEES MUST PROTECT ALL BIORETENTION AND RAIN GARDEN FACILITIES FROM SEDIMENTATION THROUGH INSTALLATION AND MAINTENANCE OF EROSION AND SEDIMENT CONTROL BMP'S ON PORTIONS OF THE SITE THAT DRAIN INTO THE BIORETENTION AND/OR RAIN GARDEN FACILITIES. RESTORE THE FACILITIES TO THEIR FULLY FUNCTIONING CONDITION IF THEY ACCUMULATE SEDIMENT DURING CONSTRUCTION. RESTORING THE FACILITY MUST INCLUDE REMOVAL OF SEDIMENT AND ANY SEDIMENT-LADEN BIORETENTION/RAIN GARDEN SOILS, AND REPLACING THE REMOVED SOILS WITH SOILS MEETING THE DESIGN SPECIFICATION.

PERMITTEES MUST MAINTAIN THE INFILTRATION CAPABILITIES OF BIORETENTION AND RAIN GARDEN FACILITIES BY PROTECTING AGAINST COMPACTION BY CONSTRUCTION EQUIPMENT AND FOOT TRAFFIC. PROTECT COMPLETED LAWN AND LANDSCAPED AREAS FROM COMPACTION DUE TO CONSTRUCTION EQUIPMENT.

PERMITTEES MUST CONTROL EROSION AND AVOID INTRODUCING SEDIMENT FROM SURROUNDING LAND USES ONTO PERMEABLE PAVEMENTS. DO NOT ALLOW MUDDY CONSTRUCTION EQUIPMENT ON THE BASE MATERIAL OR PAVEMENT. DO NOT ALLOW SEDIMENT-LADEN RUNOFF ONTO PERMEABLE PAVEMENTS.

PERMITTEES MUST CLEAN PERMEABLE PAVEMENTS FOULED WITH SEDIMENTS OR NO LONGER PASSING AN INITIAL INFILTRATION TEST USING LOCAL STORMWATER MANUAL METHODOLOGY OR THE MANUFACTURER'S PROCEDURES.

PERMITTEES MUST KEEP ALL HEAVY EQUIPMENT OFF EXISTING SOILS UNDER LID FACILITIES THAT HAVE BEEN EXCAVATED TO FINAL GRADE TO RETAIN THE INFILTRATION RATE OF THE SOILS.

CONSTRUCTION NOTES:

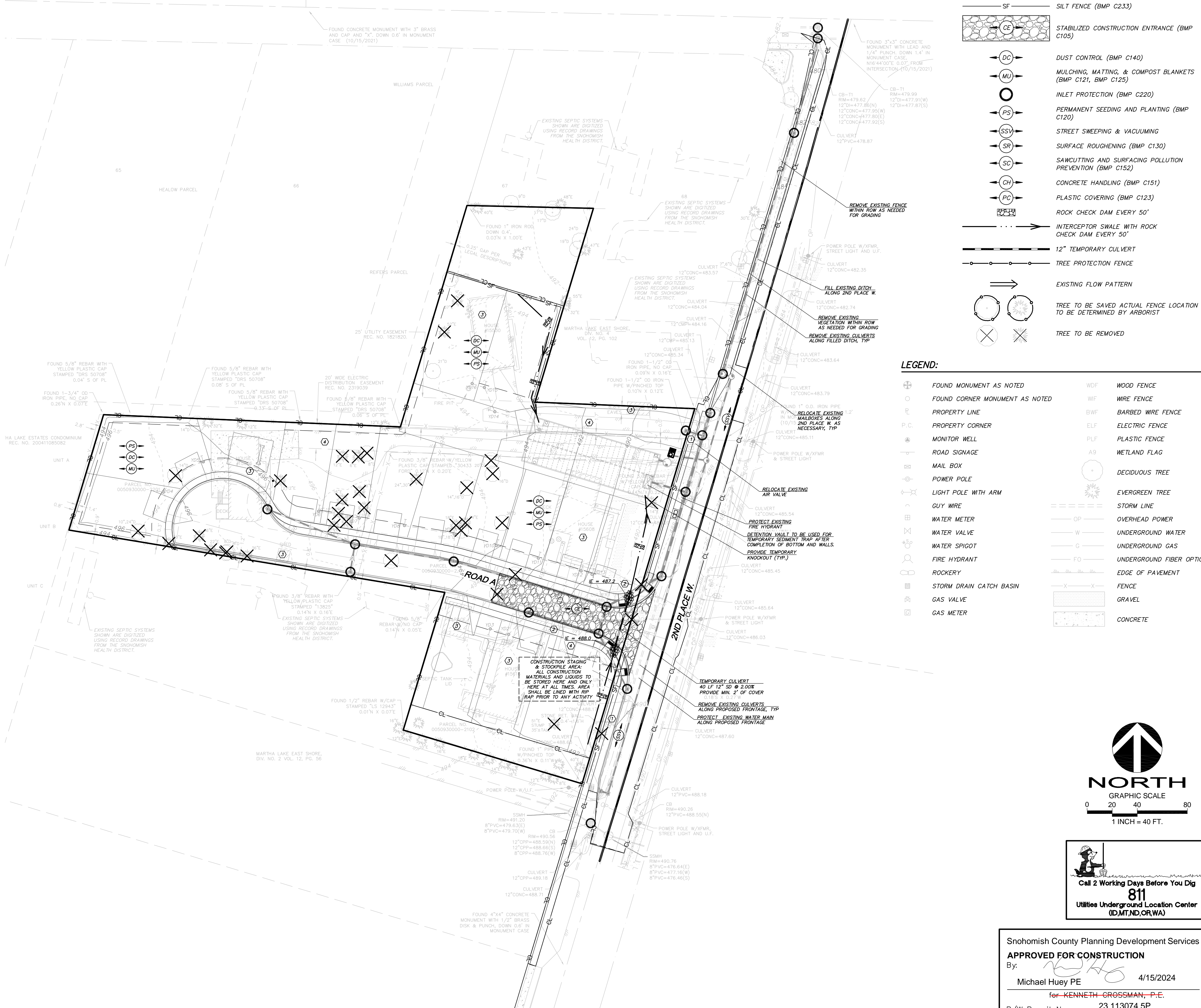
- EXISTING WATER METERS TO BE REMOVED.
- EXISTING OVERHEAD POWER LINES TO BE REMOVED. COORDINATE WITH PUD.
- EXISTING STRUCTURE TO BE REMOVED.
- REMOVE EXISTING DRIVEWAY.

NOTES:

- ALL EXISTING IMPROVEMENTS ON SITE WILL BE DEMOLISHED AND REMOVED.
- ALL SURPLUS SOILS SHALL BE EXPORTED TO AN APPROVED DROP OFF SITE.
- FILL NEEDED IN EXCESS OF ONSITE SOIL SHALL BE IMPORTED FROM AN APPROVED SOURCE AND SHALL BE APPROVED BY THE GEOTECHNICAL ENGINEER.
- THE EXISTING ONSITE, OFFSITE SEPTIC SYSTEM DRAINFIELDS AND EXISTING HOUSE LOCATIONS ON OFFSITE PARCELS ADJACENT TO THE SITE SHOWN ARE DIGITIZED USING RECORD DRAWINGS FROM THE SNOHOMISH HEALTH DISTRICT. THE ONSITE SEPTIC SYSTEM WILL BE DECOMMISSIONED PER HEALTH DEPARTMENT REQUIREMENTS.
- EXISTING EASEMENTS ON-SITE TO BE EXTINGUISHED.

CERTIFIED EROSION AND SEDIMENT CONTROL LEAD:

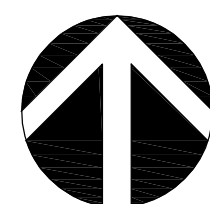
C.E.S.C.L. TYLER CHURCHILL
..... HARBOUR HOMES, LLC
..... 400 N 34TH STREET SUITE 300
..... SEATTLE, WA 98103
..... CONTACT: TYLER CHURCHILL
..... 206.315.8130

**T.E.S.C. LEGEND:**

CL	CONSTRUCTION LIMITS, TO BE FLAGGED OR FENCED WHEN NO SILT FENCE IS PROPOSED
SF	SILT FENCE (BMP C233)
CE	STABILIZED CONSTRUCTION ENTRANCE (BMP C105)
DC	DUST CONTROL (BMP C140)
MU	MULCHING, MATTING, & COMPOST BLANKETS (BMP C121, BMP C125)
PS	INLET PROTECTION (BMP C220)
SSV	PERMANENT SEEDING AND PLANTING (BMP C120)
SR	STREET SWEEPING & VACUUMING
SC	SURFACE ROUGHENING (BMP C130)
CH	SAWCUTTING AND SURFACING POLLUTION PREVENTION (BMP C152)
PC	CONCRETE HANDLING (BMP C151)
PL	PLASTIC COVERING (BMP C123)
RC	ROCK CHECK DAM EVERY 50'
IS	INTERCEPTOR SWALE WITH ROCK CHECK DAM EVERY 50'
12"	12" TEMPORARY CULVERT
TF	TREE PROTECTION FENCE
IFP	EXISTING FLOW PATTERN
TS	TREE TO BE SAVED ACTUAL FENCE LOCATION TO BE DETERMINED BY ARBORIST
TR	TREE TO BE REMOVED

LEGEND:

FM	FOUND MONUMENT AS NOTED	WF	WOOD FENCE
FC	FOUND CORNER MONUMENT AS NOTED	WF	WIRE FENCE
PL	PROPERTY LINE	BWF	BARBED WIRE FENCE
P.C.	PROPERTY CORNER	ELF	ELECTRIC FENCE
MW	MONITOR WELL	PLF	PLASTIC FENCE
RS	ROAD SIGNAGE	AF	WETLAND FLAG
MB	MAIL BOX	DT	DECIDUOUS TREE
PP	POWER POLE	ET	EVERGREEN TREE
LPA	LIGHT POLE WITH ARM	SL	STORM LINE
GW	GUY WIRE	OP	OVERHEAD POWER
WM	WATER METER	UW	UNDERGROUND WATER
WV	WATER VALVE	UG	UNDERGROUND GAS
WS	WATER SPIGOT	FO	UNDERGROUND FIBER OPTIC
FD	FIRE HYDRANT	EP	EDGE OF PAVEMENT
RO	ROCKERY	F	FENCE
SDCB	STORM DRAIN CATCH BASIN	G	GRAVEL
GV	GAS VALVE	C	CONCRETE
GM	GAS METER		

**NORTH**

GRAPHIC SCALE

0 20 40 80

1 INCH = 40 FT.

**Call 2 Working Days Before You Dig****811**

Utilities Underground Location Center (D.M.T.D.OR.WA)

Snohomish County Planning Development Services

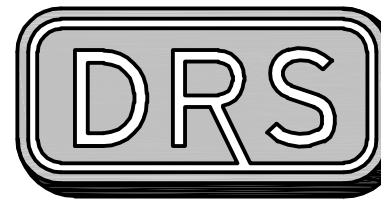
APPROVED FOR CONSTRUCTIONBy:  4/15/2024for ~~KENNETH GROSSMAN, P.E.~~

R/W Permit No. 23 113074 5P

PFN: 23-111975 LDA PFN: 22-112728 PSD/SPA

R:\2021\1\21115\3\Drawings\Plots\Engineering\04-3TESC21115.dwg 1/23/2024 9:00:11 AM

COPYRIGHT © 2023, D.R. STRONG CONSULTING ENGINEERS INC.

**D.R. STRONG****CONSULTING ENGINEERS**

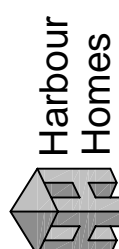
ENGINEERS PLANNERS SURVEYORS

620 - 7th AVENUE KIRKLAND, WA 98033

O 425.827.3065 F 425.827.2423

MILAGRO II PRD

T.E.S.C. PLAN

2ND PLACE W LYNNWOOD, WA 98087
PARCELS 0050930000-2202, -2201 & -2102
0050850000-6702**HARBOUR HOMES, LLC**400 N 34TH STREET, STE 300
SEATTLE, WA 98103
(206) 315-8130

1-23-24

APR

MAJ

REVISION

COUNTY COMMENTS

DATE

01.23.24

DRAFTED BY: PHB/RMF

DESIGNED BY: RMF

PROJECT ENGINEER: MAJ

DATE: 7-5-2023

PROJECT NO.: 21115

DRAWING: C4

SHEET: 4 OF 21