



King County

Water and Land Resources Division

Department of Natural Resources and Parks

King Street Center

201 South Jackson Street, Suite 6300

Seattle, WA 98104-3855

206-477-4800 Fax 206-296-0192

TTY Relay: 711

June 9, 2025

Roger Chang

Washington State Department of Ecology

Northwest Regional Office

PO Box 330316

Shoreline, WA 98133-9716

RE: S.4.F.1 Notification – 12600 76th Ave. Skyway (ERTS 739108)

Dear Mr. Chang:

S.4.F.1 Notification:

This letter serves as formal notice under Section S.4.F.1 of King County's Phase I Municipal Stormwater Permit, that King County has recently become aware of a discharge from its municipal separate storm sewer system (MS4) into receiving waters that is likely to have caused a violation of Water Quality Standards.

Site-Specific Incident Date and Location Information

On May 27, 2025, King County was notified via Ecology's ERTS system (ERTS number 739108) of a release of septage, or blackwater, from a recreational vehicle (RV) that was parked near the roadside at the intersection of S. 124th St. and 76th Ave. This RV was observed to be leaking blackwater from its holding tank, which was reported to the ERTS program by a citizen.

Response:

King County staff were dispatched to investigate this report on May 28th, 2025, to determine the extent of the blackwater release, assess the cleanup needs and abate the issue. Upon arrival at the site staff observed a single RV parked near the intersection of S 124th St. and 76th Ave. in Skyway and began investigating the scene. Staff found that the leak from the RV had been contained and had not reached the MS4 at that location as reported in the ERTS. While on-site, staff also observed a larger group of RVs parked nearby on private property at 12600 76th Ave. S near the RV identified in the complaint. Upon investigation of this encampment, it was discovered that the group of RVs had been utilizing a sewer maintenance hole (owned by Skyway Water and Sewer District) located nearby to discharge their blackwater tanks and to discard their trash. This sewer maintenance hole had become inundated with debris and trash and had created a clog that backed up the sewer system and caused it to leak, which eventually entered the County's MS4 adjacent to the property. This sewage was traced downstream to Skyway Park where it is presumed to have exited our MS4 and entered a seasonal stream running

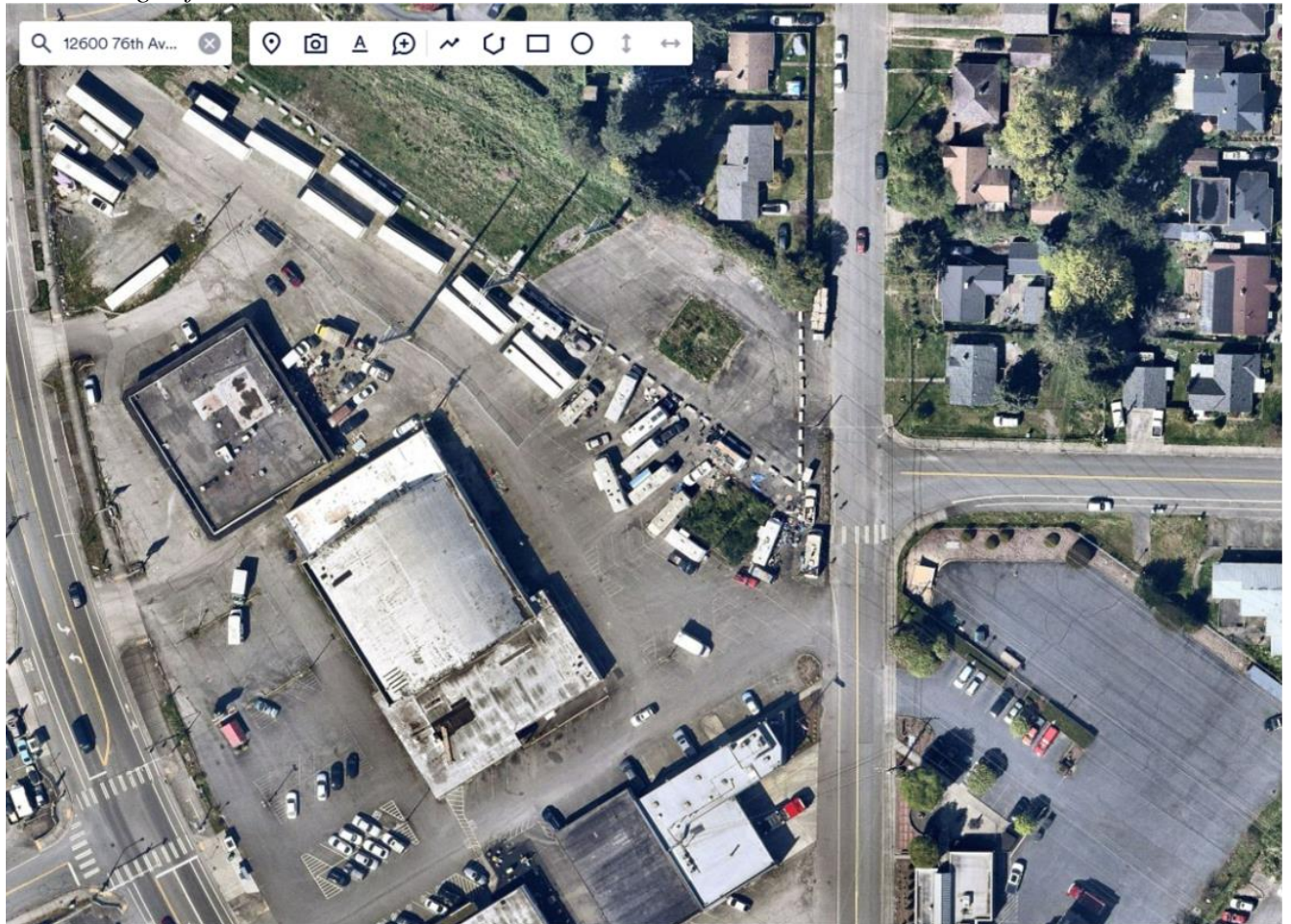
Roger Chang

June 9, 2025

Page 2 of 5

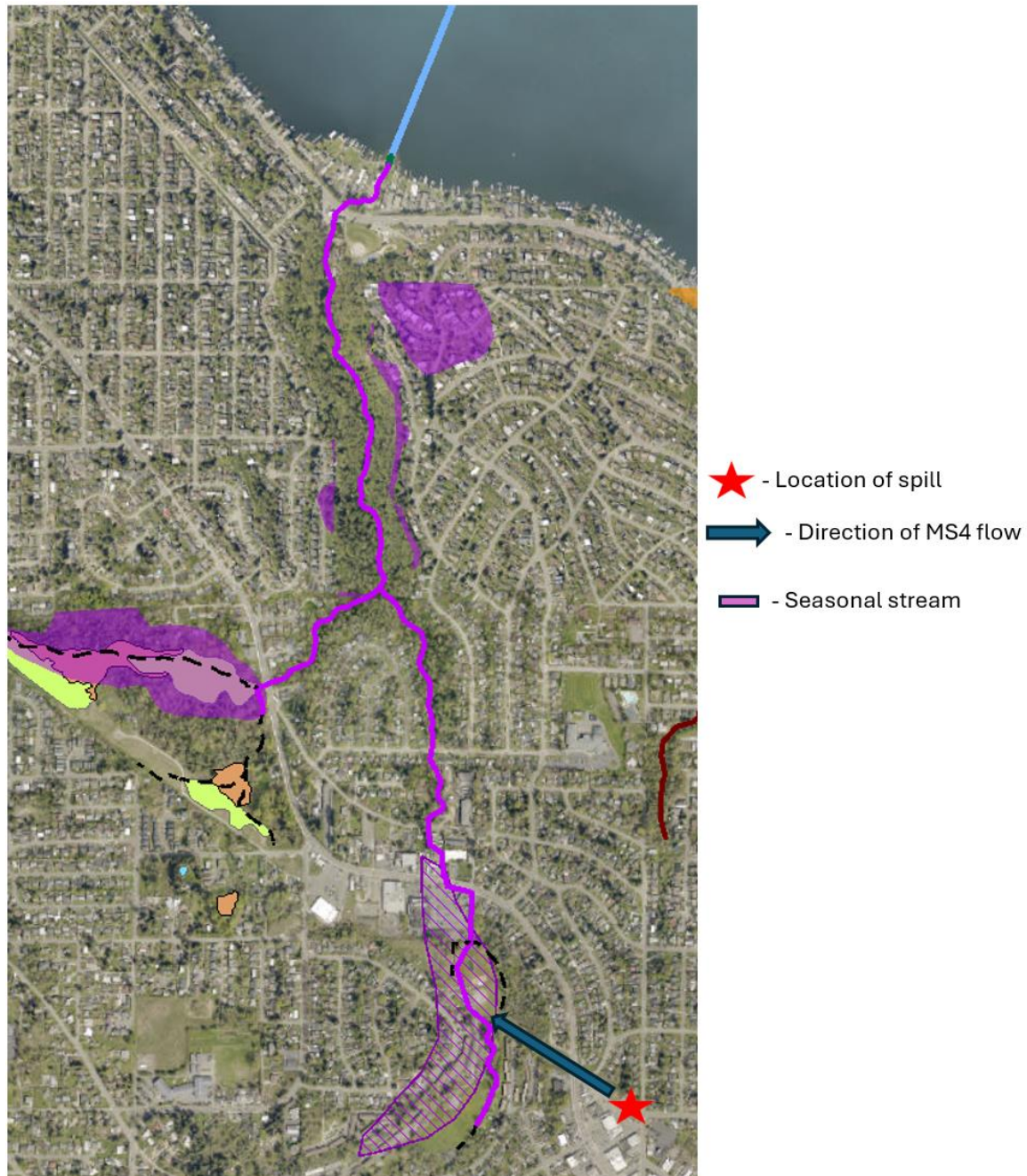
through the park that connects to Lake Washington, over 1.25 miles away. While tracing to the lake was not conducted, leaving the MS4 and entering this seasonal stream warrants S4.F.1 notification.

Aerial image of site:



Roger Chang
June 9, 2025
Page 3 of 5

Map of area affected including spill location and direction of MS4 flow.



Roger Chang

June 9, 2025

Page 4 of 5

Source

The source of the incident is improperly managed septic effluent from parked RV activities mixed with sanitary sewer effluent from a blocked sewer maintenance hole. The spill occurred near the intersection of S 124th St. and 76th Ave. in Skyway (see above map and imagery). This effluent was discovered entering the county MS4 and flowing to a seasonal stream that eventually connects to Lake Washington. Staff were unable to ascertain how long this spill had been entering the MS4.

Incident Response Information

After the initial findings from staff were reported, King County Public Health was notified. Vactor crews from Skyway Water and Sewer District (SWSD) were dispatched to remedy the blockage in the sanitary sewer system. SWSD placed an Ecology block over the top of the maintenance hole to prevent further misuse of the sewer collection system. Flows of sewage in the MS4 ceased upon removal of the blockage from the sanitary sewer. King County Public Health placed signage near the seasonal stream in Skyway Park notifying the public of the spill and to avoid the area. Evidence of sewage or septage (solids, grease, floatables, etc.) was not identified downstream of the MS4 outfall in Skyway Park. King County Roads has cleaned out the affected MS4. The storm sewer running through private property did not have sumps in their catch basins and therefore any fecal contamination would have just passed through the system. King County Stormwater Services will continue to monitor the area for potential dumping of human waste or other activities that could endanger our MS4 and will pursue enforcement actions against violators if warranted, including the property owner at 12600 76th Ave. King County Sheriff's Office has been notified of the incident as well and will be monitoring activities as needed.

Additional Incident Information Including Credible Site-Specific Information causing or contributing to a known or likely violation of water quality standards in the receiving water

No additional information.

Nature and extent of the known or likely violation in the receiving water

Blackwater from RV waste tanks comingled with sanitary sewer effluent had entered the MS4 and evidence of this spill was traced through the MS4 to an outfall at Skyway Park. No visual evidence of the spill was observed downstream of the MS4 outfall. Duration and extent of spill is unknown beyond the County MS4.

Reasons why the MS4 discharge is believed to be causing or contributing to the problem

The discharge of RV waste tanks, comingled with sanitary sewer effluent is likely to have caused a violation of Water Quality Standards and could constitute a threat to human health, welfare, or the environment.

Roger Chang

June 9, 2025

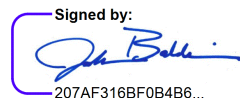
Page 5 of 5

Questions and Concerns

If you have any questions regarding the details contained in this letter, please contact Zack Holt, Environmental Programs Managing Supervisor in the Water and Land Resources Division, by phone at: 206--948--5573 or by email at: zholt@kingcounty.gov.

"I certify under penalty of law, that this document and all attachments were prepared under my direction or supervision in accordance with a system designed to assure that qualified personnel properly gathered and evaluated the information submitted. Based on my inquiry of the person or persons who manage the system or those persons directly responsible for gathering information, the information submitted is, to the best of my knowledge and belief, true, accurate, and complete. I am aware that there are significant penalties for submitting false information, including the possibility of fine and imprisonment for willful violations."

Sincerely,

Signed by:

207AF316BF0B4B6...

Josh Baldi
Division Director

Enclosure

cc: Angela Gallardo, Manager, Stormwater Services Section (SWSS), Water and Land Resources Division (WLRD), Department of Natural Resources and Parks (DNRP)
Bob Bernhard, Source Control Program Manager, SWSS, WLRD, DNRP
Diane Hennebert, Water Quality Planner/Project Manager II, SWSS, WLRD, DNRP
Zack Holt, Environmental Programs Managing Supervisor, SWSS, WLRD, DNRP