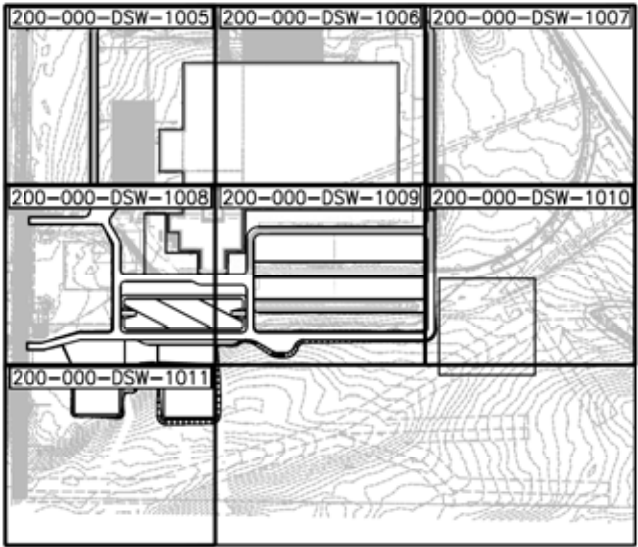


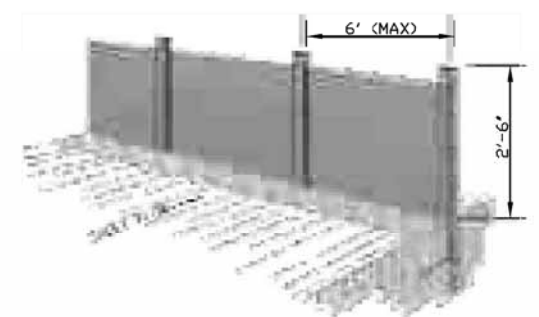
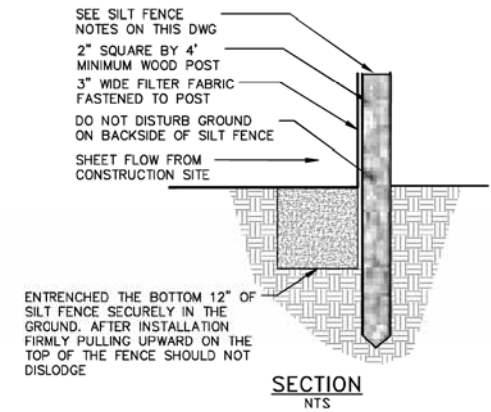
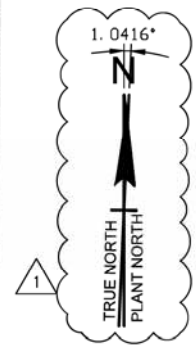
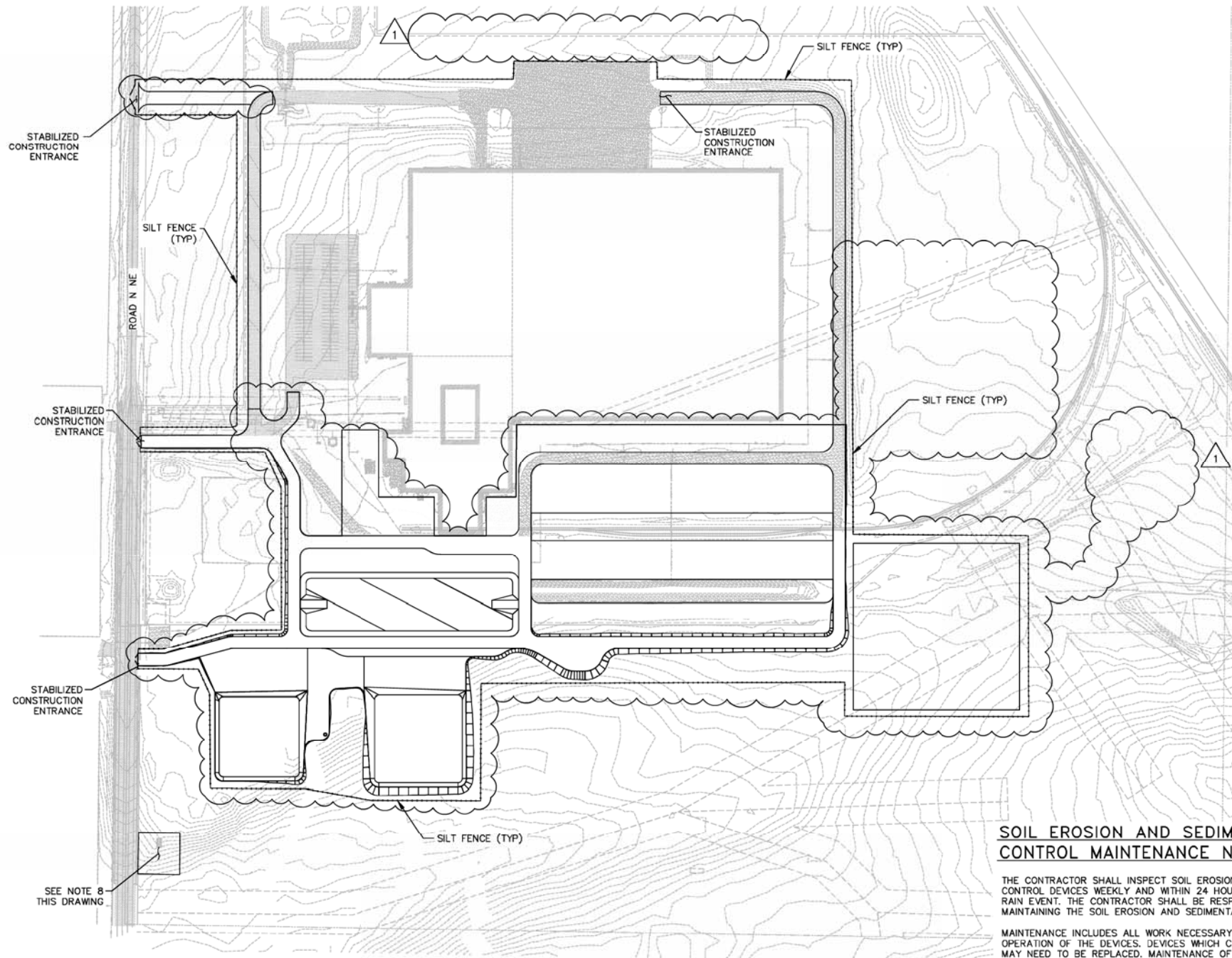
NOTICE TO CONTRACTOR:

1. FOR TITLE, DRAWINGS INDEX, KEY PLAN AND VICINITY MAP SEE DWG 200-000-DSW-1001.
2. FOR GENERAL NOTES AND ABBREVIATIONS SEE DWGS 200-000-DSW-1002 THRU 200-000-DSW-1003.
3. CONTRACTOR TO PROVIDE SITE ROUGH GRADE FOR PIPE PROTECTED-IN-PLACE PER DRAWINGS 200-000-DSW-1005 TO 200-000-DSW-1011.
4. CONTRACTOR TO COORDINATE WITH SILA NANOTECHNOLOGIES INC. PLANT 2 PROJECT FOR REMOVAL OF ANY POSSIBLE ASSOCIATED ELECTRICAL LINES AND INSTRUMENTATION DATA CABLES ATTACHED TO EQUIPMENTS WITHIN THE WORK AREA. ALL INSTRUMENTS, LEVEL DATA TRANSMITTERS, EQUIPMENT, ETC. SHALL BE SALVAGED AND RETURNED TO SILA NANOTECHNOLOGIES INC. PLANT 2 PROJECT MAINTENANCE AS REQUIRED.
5. CONTRACTOR SHALL PERFORM CLEARING AND GRUBBING AS REQUIRED BEFORE STARTING WORK.



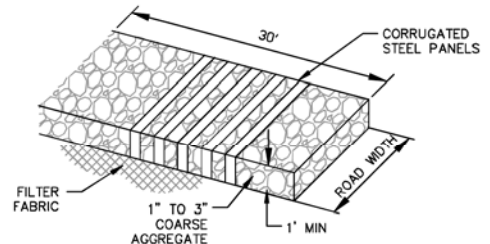
KEY PLAN

D SHEET SCALE										ENGINEERING AND PERMIT STAMPS (As Required)		CUSTOMER		DRG TITLE	
														SILA NANOTECHNOLOGIES INC. PLANT 2 PROJECT CITY OF MOSES LAKE, WASHINGTON SITE PREPARATION PLAN OVERALL SITE PREPARATION PLAN	
WORLEY PROJECT No.												DRG No		200-000-DSW-1004	
														REV	
														1	
REV	DATE	REVISION DESCRIPTION	DRAWN	DRAFT CHK	DESIGNED	ENG CHK	APPROVED	CUSTOMER	REF DRAWING No	REFERENCE DRAWING TITLE					
1	26-JUN-23	RE-ISSUED FOR CONSTRUCTION													
0	31-MAR-23	ISSUED FOR CONSTRUCTION	FP			ED	NW								



SILT FENCE INSTALLATION DETAIL
PERSPECTIVE VIEW
NOT TO SCALE

- DRAWING NOTES:**
- WHERE PERMITTED POSITION THE SILT FENCE 5' BEYOND THE TOE OF SLOPE.
 - WHEN EXCAVATING THE TRENCH USE MACHINERY THAT WILL MINIMIZE DISTURBANCE.
 - TO PREVENT RUNOFF FROM FLOWING AROUND THE ENDS OF THE SILT FENCE RUN THE ENDS OF THE FENCE UP SLOPE.
 - AVOID USING SPLICES ALONG THE FENCE AS MUCH AS POSSIBLE. IF A SPLICE IS NECESSARY BEFORE PONDING IN THE END POSTS OVERLAP THE END POSTS AND TWIST 180 DEGREES.
 - MAINTAIN A PROPERLY FUNCTIONING SILT FENCE THROUGHOUT THE DURATION OF THE PROJECT OR UNTIL DISTURBED AREAS HAVE BEEN VEGETATED.
 - WHEN A STORM EVENT DEPOSITS SEDIMENT BEHIND THE FENCE REMOVE THE SEDIMENT AND PLACE IT IN A STABLE AREA APPROVED BY THE ENGINEER.
 - IN AREAS THAT HAVE BEEN SEEDED AND MULCHED REMOVE SILT FENCE UNLESS THEY ARE PROTECTING A WETLAND OR WATER BODY.
 - CONTRACTOR TO INSTALL INLET PROTECTION PER BEST MANAGEMENT PRACTICES AS SHOWN ON DWGS 200-000-USW-1019 FOR STORM WATER BASIN AT SOUTHWEST CORNER OF PROPERTY ALONG ROAD N-NE.



STABILIZED CONSTRUCTION ENTRANCE
(TO BE INSTALLED PER PLAN) ISOMETRIC VIEW
NOT TO SCALE

SOIL EROSION AND SEDIMENTATION CONTROL MAINTENANCE NOTES:

THE CONTRACTOR SHALL INSPECT SOIL EROSION AND SEDIMENTATION CONTROL DEVICES WEEKLY AND WITHIN 24 HOURS OF A SIGNIFICANT RAIN EVENT. THE CONTRACTOR SHALL BE RESPONSIBLE FOR MAINTAINING THE SOIL EROSION AND SEDIMENTATION CONTROL DEVICES.

MAINTENANCE INCLUDES ALL WORK NECESSARY FOR PROPER OPERATION OF THE DEVICES. DEVICES WHICH CAN NOT BE REPAIRED MAY NEED TO BE REPLACED. MAINTENANCE OF THE DEVICES SHALL BE PERFORMED WITHIN 24 HOURS OF INSPECTION.

SEDIMENT SHALL BE REMOVED AS NECESSARY TO MAINTAIN THE EFFECTIVENESS OF SOIL EROSION AND SEDIMENTATION CONTROL DEVICES.

REV	DATE	REVISION DESCRIPTION	DRAWN	DRAFT CHK	DESIGNED	ENG CHK	APPROVED	CUSTOMER	REF DRAWING No	REFERENCE DRAWING TITLE	D SHEET	SCALE	ENGINEERING AND PERMIT STAMPS (As Required)	CUSTOMER	DRG TITLE	DRG No	REV
1	26-JUN-23	RE-ISSUED FOR CONSTRUCTION													SILA NANOTECHNOLOGIES INC. PLANT 2 PROJECT CITY OF MOSES LAKE, WASHINGTON SITE PREPARATION EROSION CONTROL PLAN DRAWINGS	200-000-DSW-1018	1
0	31-MAR-23	ISSUED FOR CONSTRUCTION															