

Focus on the Everett Smelter Cleanup

Toxics Cleanup Program

September 2010

Your neighborhood is affected by contamination from the former Everett Smelter. The Washington State Department of Ecology (Ecology) managed the cleanup of the most highly contaminated properties between 1999 and 2007, and will be cleaning up an additional 43 homes next summer. The first step in the cleanup process is to prepare maps of individual homes so that soil sampling can be conducted. Ecology plans to sample and test arsenic levels from soil samples gathered in your neighborhood and inform you about the results.

Mapping and sampling to occur in your neighborhood

The next stage of the cleanup process includes mapping and sampling in the yards of 43 homes southeast of the Legion Memorial Golf Course. In order to plan for cleanup, maps must be produced for each individual property to identify areas in your yard to sample. Ecology must analyze soil samples to determine whether cleanup is necessary and how much soil must be removed. Ecology will inform you ahead of time when this will occur.

Ecology will need permission from you to access your property in order to create a map of your yard. If you agree to have this work done on your property, you will need to sign the enclosed access agreement by **September 24, 2010**.

Taking safety precautions

The areas with the most highly contaminated soil have already been removed or covered with buildings or pavement, and there is no immediate danger to human health. Health risks are associated with long-term exposure to arsenic contaminated soil, and people should avoid excessive exposure. The Snohomish Health District has issued a public health advisory for the area. Please visit their website at www.snohd.org/snoadvis/ for more information on health guidelines and precautionary measures.

Neighborhood history

In 1894, a factory was built near the intersection of Broadway and East Marine View Drive in northeast Everett. It was used to produce lead, gold, and silver. An arsenic extraction plant or smelter was installed in 1898 and operated until 1912. When smelter operations ended, equipment was sent off site, and above-ground structures were demolished.

The smelter property was sold in various parcels. The last parcel was sold in 1936. In the 1930s and 1940s, part of the former smelter property was developed into residential properties. The highway interchange between East Marine View Drive and State Route 529 was built across the old smelter site in the 1950s.

Ecology discovered the contamination problem in October 1990. A local company notified Ecology that they had found elevated concentrations of arsenic and lead in the soil and groundwater during an environmental assessment of the property. Ecology conducted additional investigations of the surrounding area.

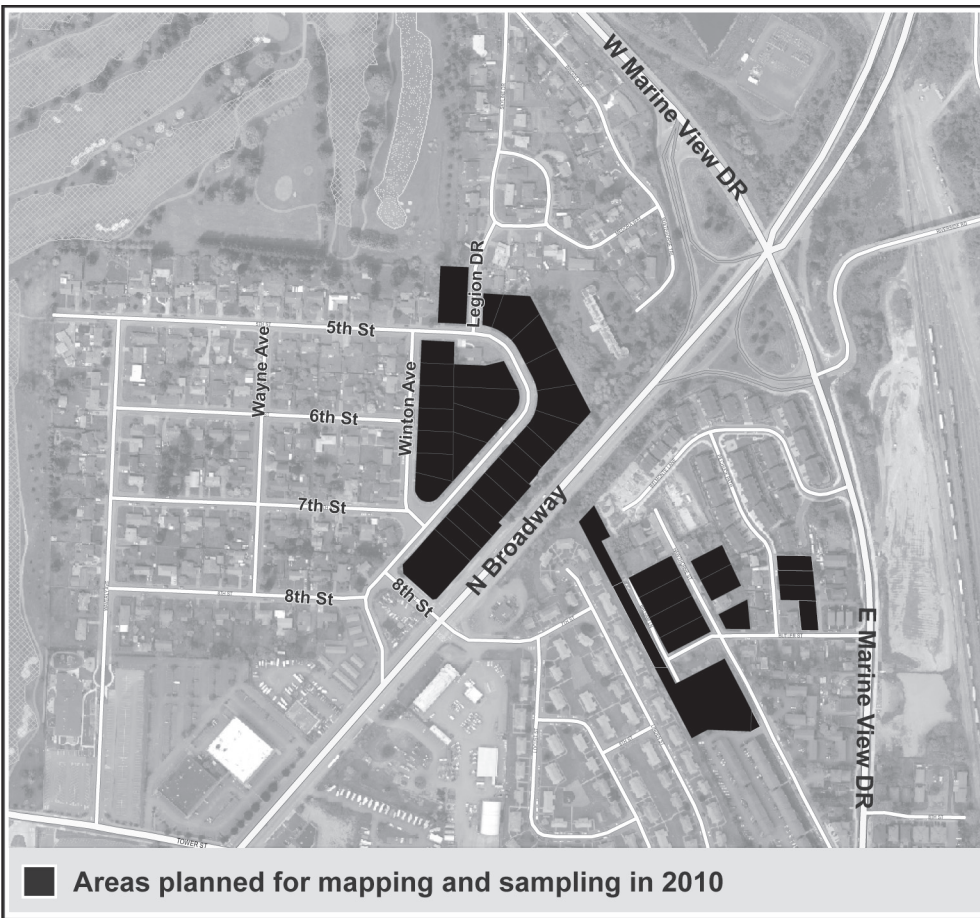
The soil at the Everett Smelter Site has higher than normal levels of arsenic, lead, cadmium and other metals. The area includes both the former smelter plant property, which contains the smelter debris, and the surrounding area, which was affected by air emissions from the smelter stacks. Areas next to the former smelter property also may have been contaminated by smelter operations, including spilled products and smelter waste.

The cleanup is being funded by a settlement from Asarco, and through allocations by the state legislature.

Anticipated schedule for mapping of yards

The schedule of activities for 2010-2011 includes:

- **September 24:** *Access agreements* (Sign and submit to Ecology by this date)
- **September to November:** *Mapping and sampling begins* (You will be contacted to set up an appropriate time)
- **Summer 2011:** *Cleanup begins* (For properties with contamination above the state cleanup level)



For more information:

Contact:

Jerome Cruz
 Washington Department of Ecology Northwest Regional Office Toxics Cleanup Program

Address:

3190 160th Avenue SE
 Bellevue, WA 98008

Telephone:

(425) 649-7094

E-mail:

jcru461@ecy.wa.gov

Visit:

http://www.ecy.wa.gov/programs/tcp/sites/asarco/es_main.html

Facility Site ID 2744

Special accommodations

To ask about the availability of this document in a version for the visually impaired, call Nancy Lui at (425) 649-7117 (voice).

Persons with hearing loss, call 711 for Washington Relay Service. Persons with a speech disability, call 877-833-6341.