

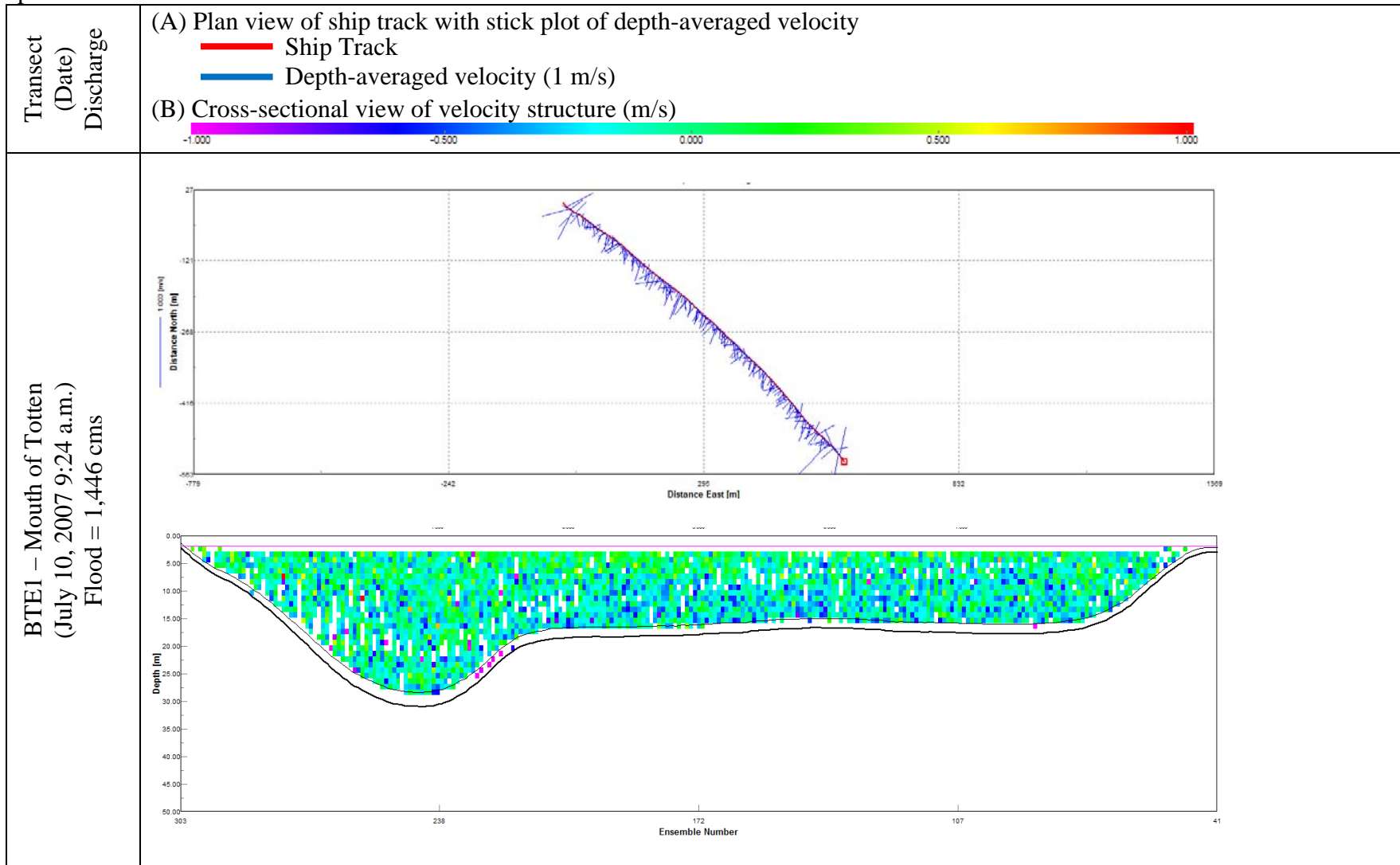
## **Appendix E. Acoustic Doppler Current Profiler (ADCP) Results**

Table E-1. Transects conducted July 10, 2007 across multiple inlets in South Sound on a flooding tide (page 2)

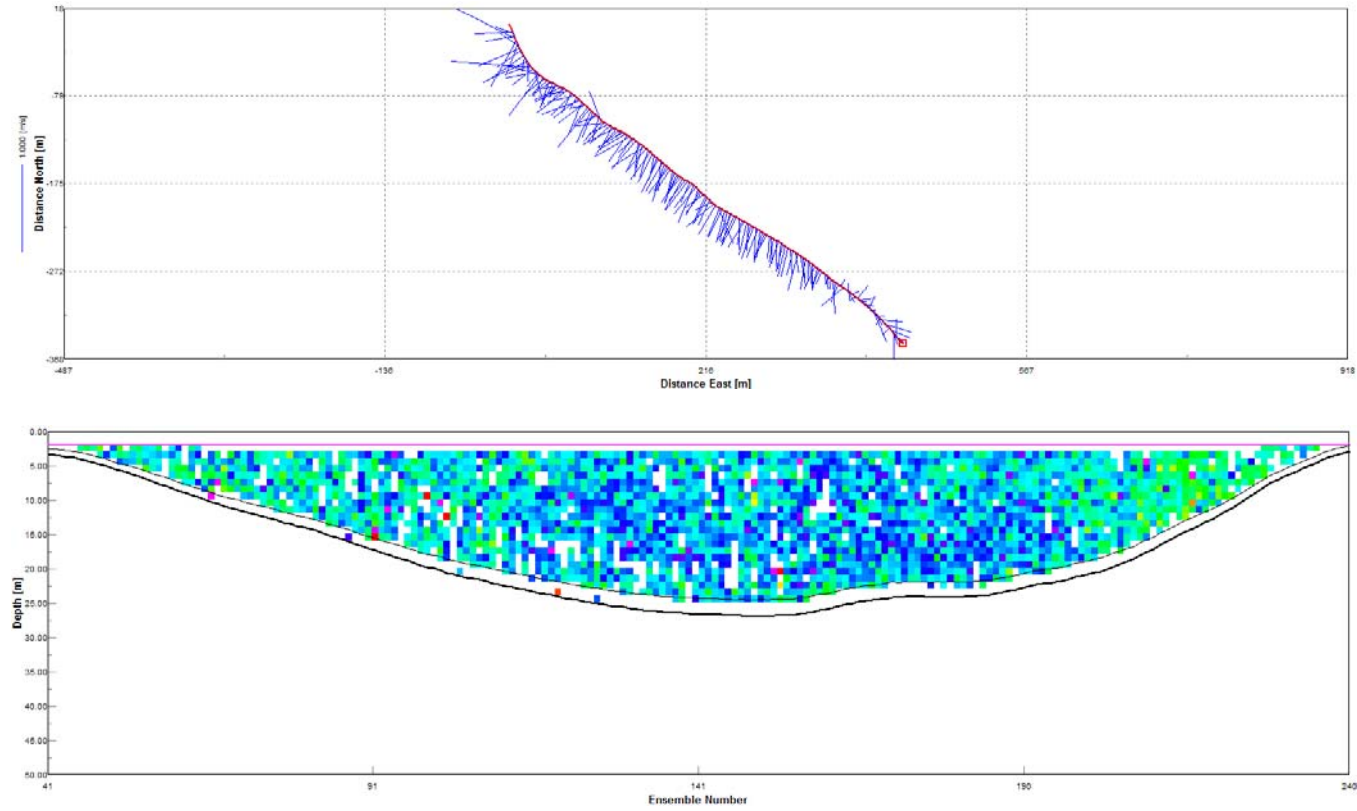
Table E-2. Ebb-tide transects recorded the morning of September 26, 2007 (page 24)

Table E-3. Flood-tide transects conducted the afternoon of September 26, 2007 (page 34)

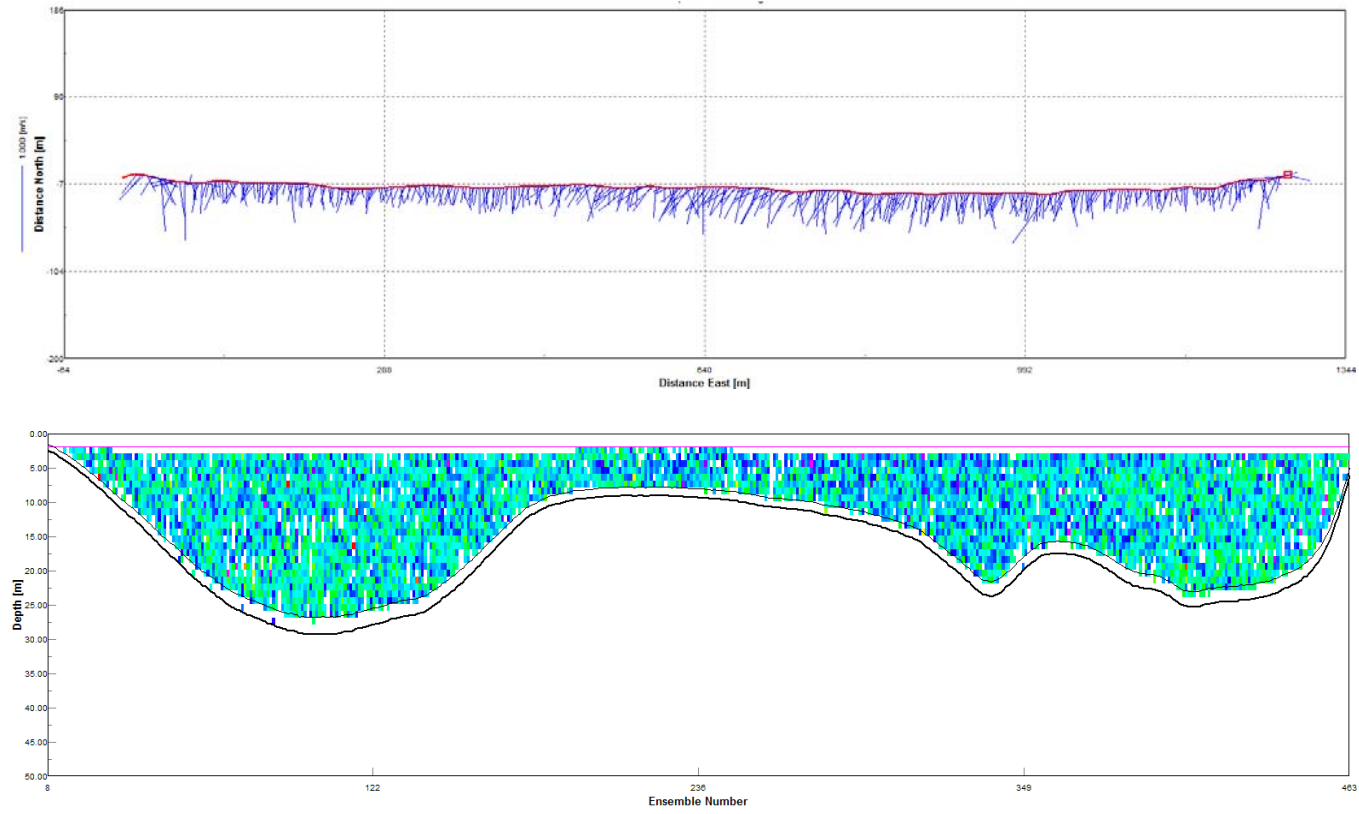
Table E-1. Transects conducted July 10, 2007 across multiple inlets in South Sound on a flooding tide. Colors indicate the flow direction, with red and blue in opposite directions. Magnitude is expressed as color intensity, with the darkest colors indicating the highest velocities. The transects indicate that while flow patterns are fairly uniform even where bottom topography is complex, flow patterns around Hope Island are particularly complicated. The northern ends of Case and Carr also exhibit lateral variability in flow patterns.



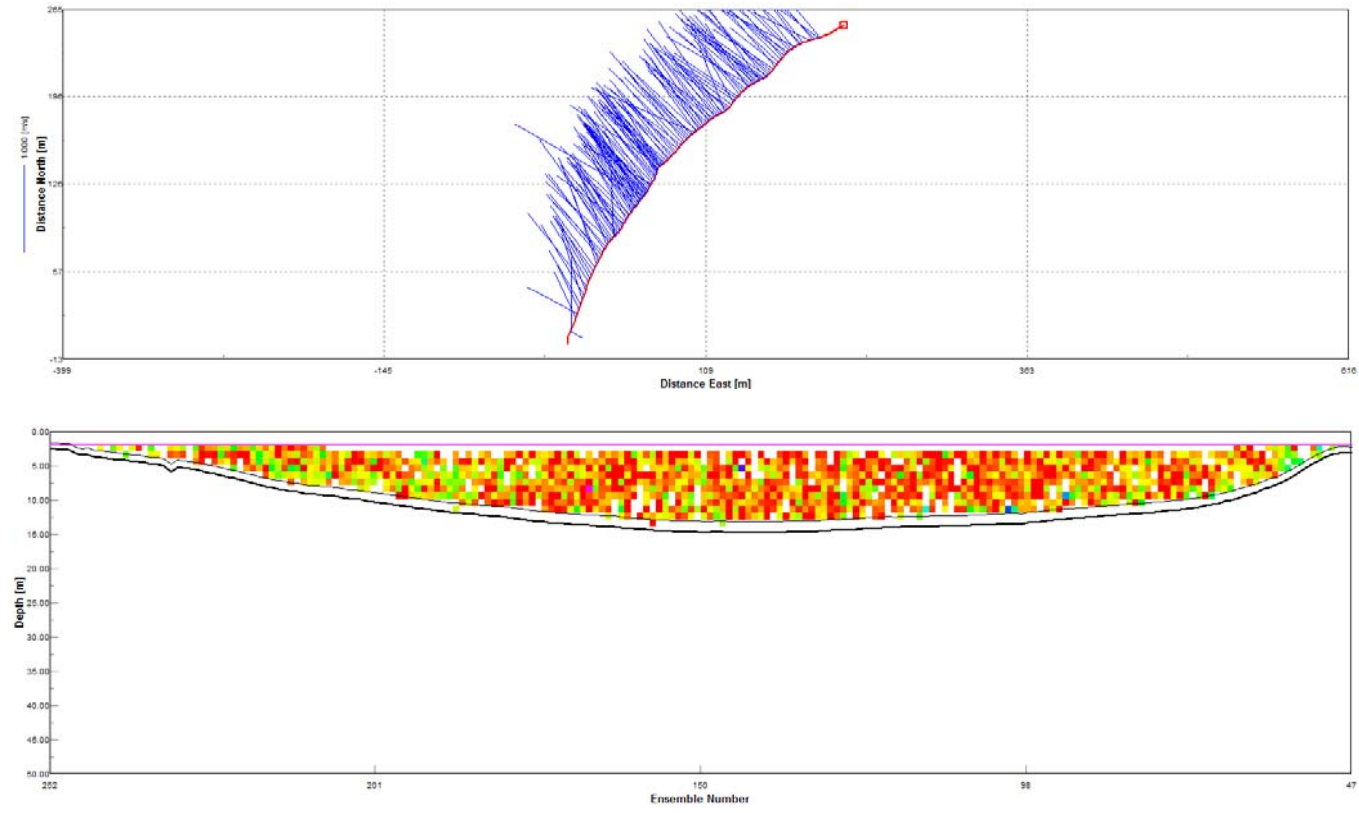
BTE4 – Mouth of Eld  
(July 10, 2007 10:02 a.m.)  
Flood = 2,696 cms



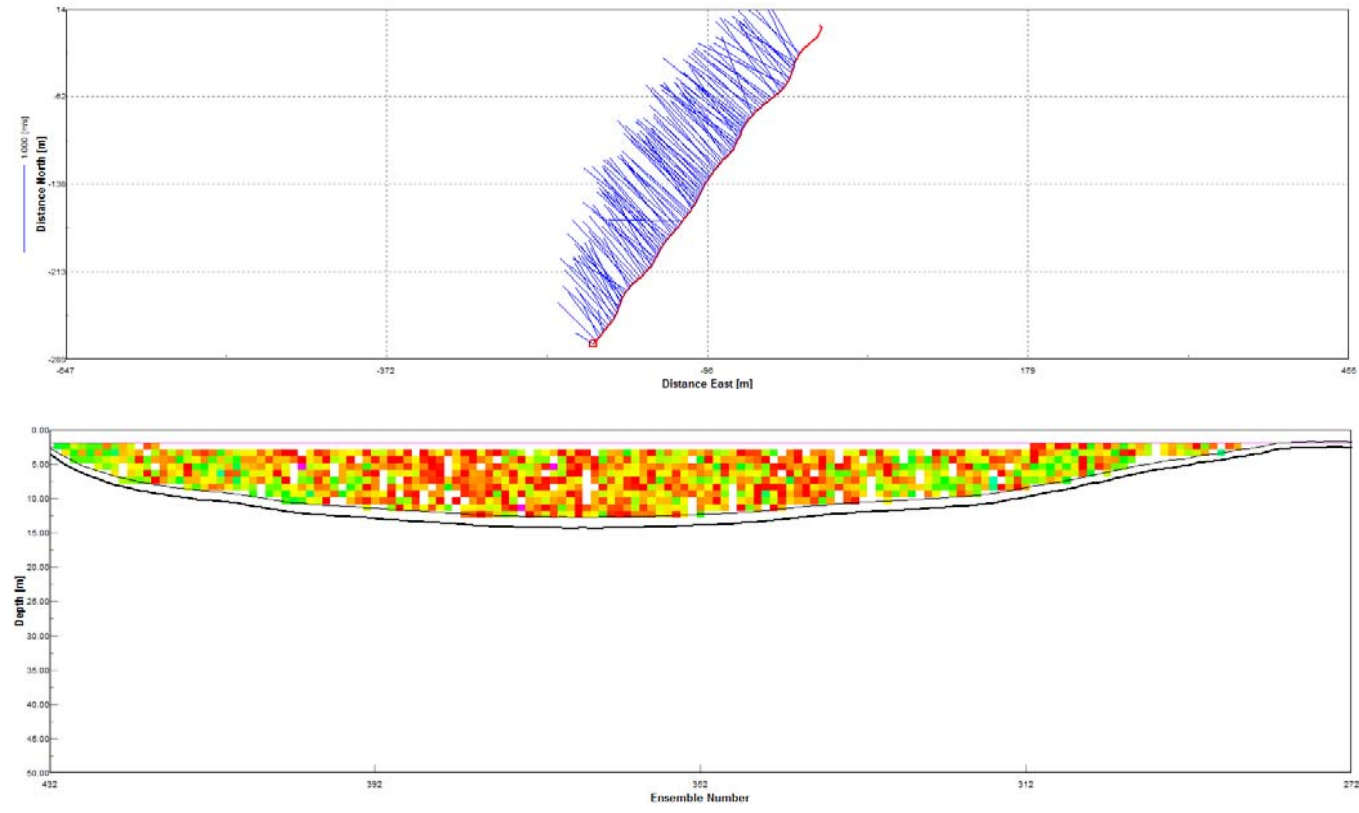
BTE5 – Mouth of Budd  
(July 10, 2007 10:21 a.m.)  
Flood = 4,538 cms



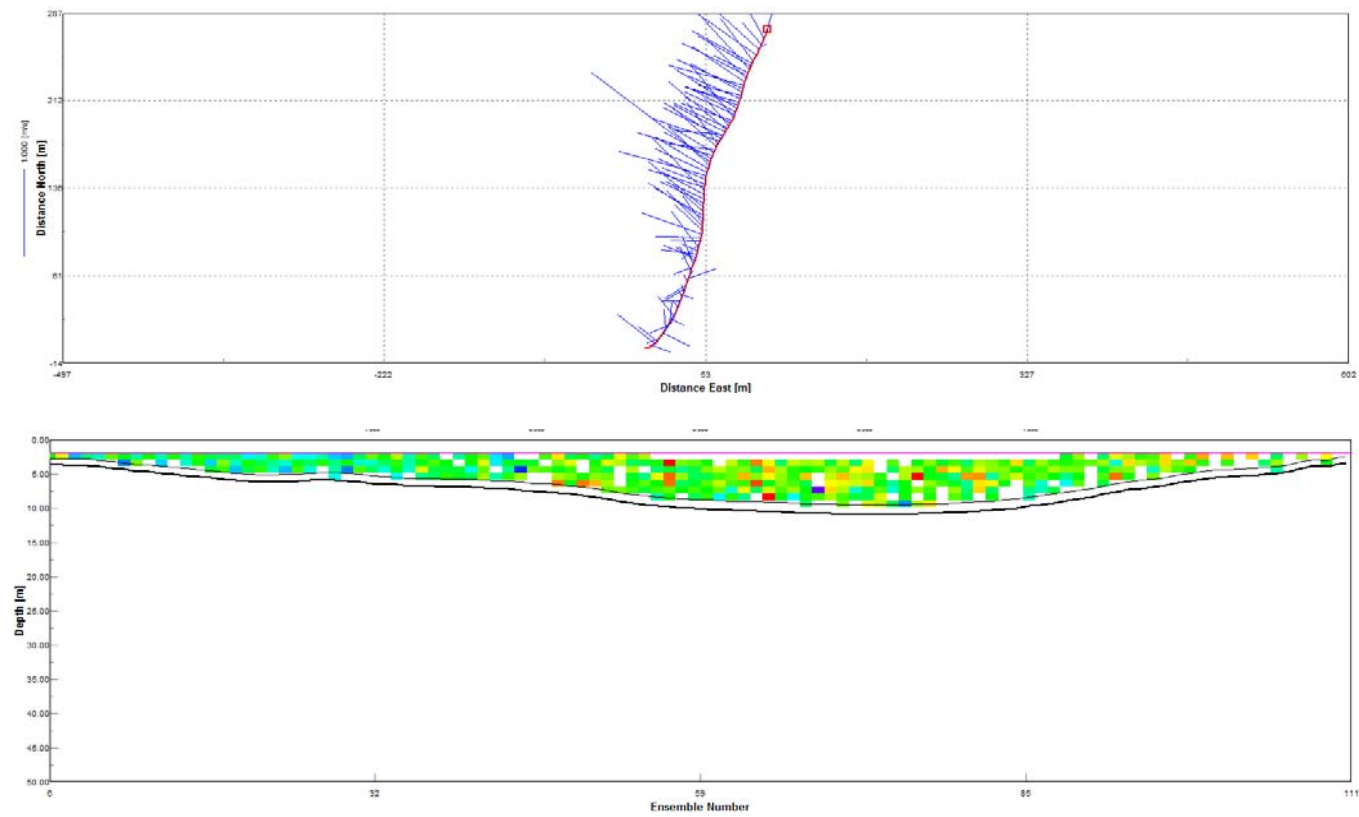
BTE3a – S. of Hope Island  
(July 10, 2007 10:58 a.m.)  
Flood = 3,154 cms



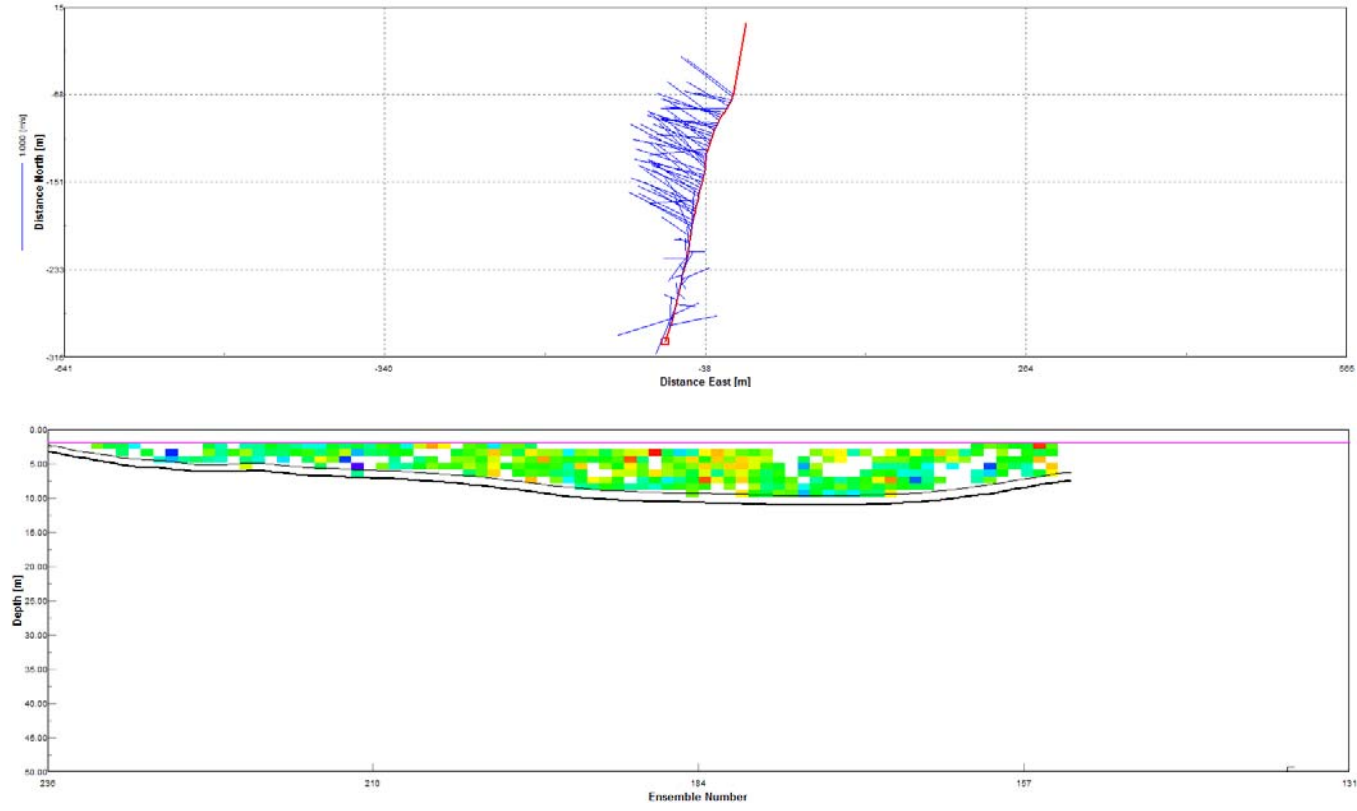
BTE3b - pass 2  
(July 10, 2007 11:07 a.m.)  
Flood = 3,151 cms



BTE2a – N. of Hope Island  
(July 10, 2007 11:22 a.m.)  
Total = 1,104 cms (Flood = 1,111 cms and Ebb = 7 cms)

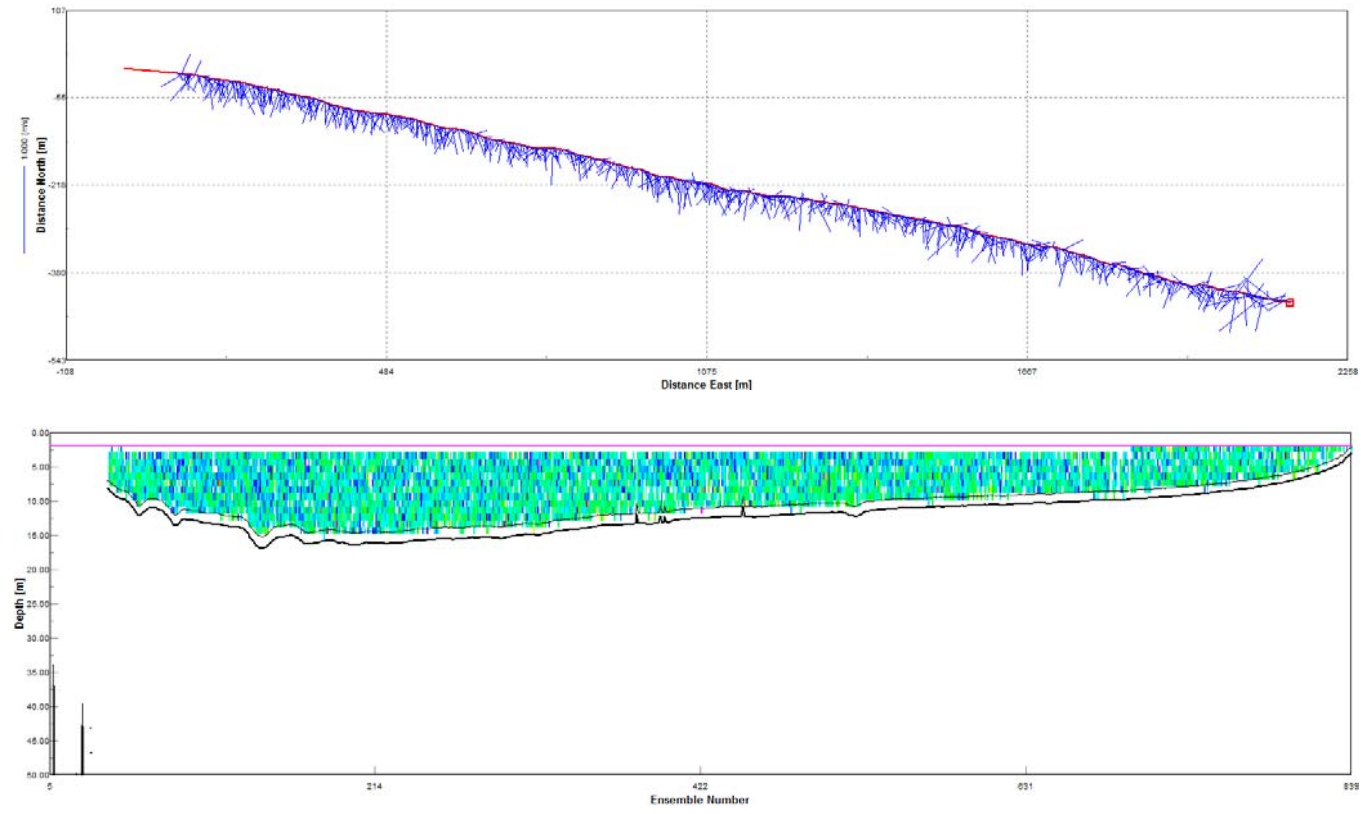


BTE2b - pass 2  
(July 10, 2007 11:28 a.m.)  
Total = 1,193 cms (Flood = 1,207 cms and Ebb = 14 cms)

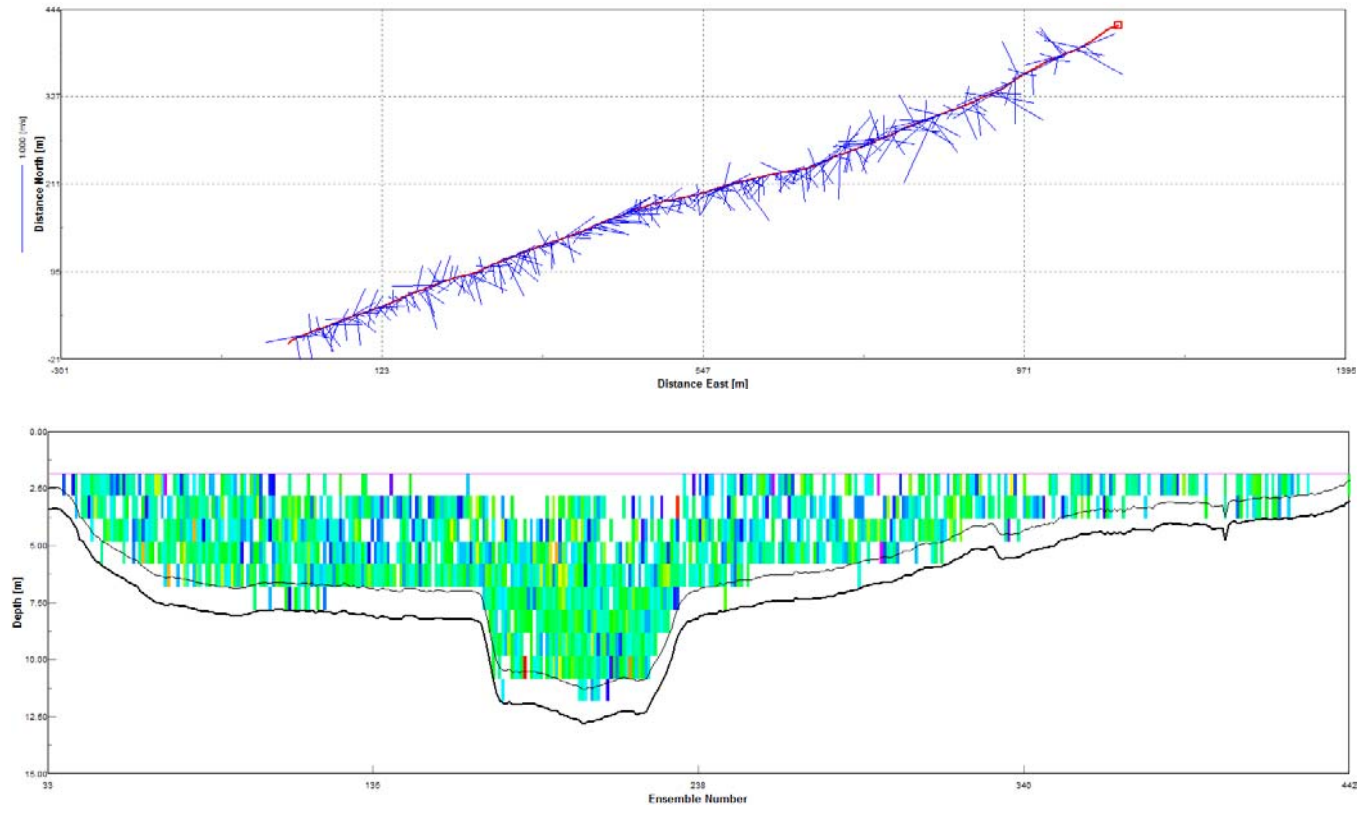




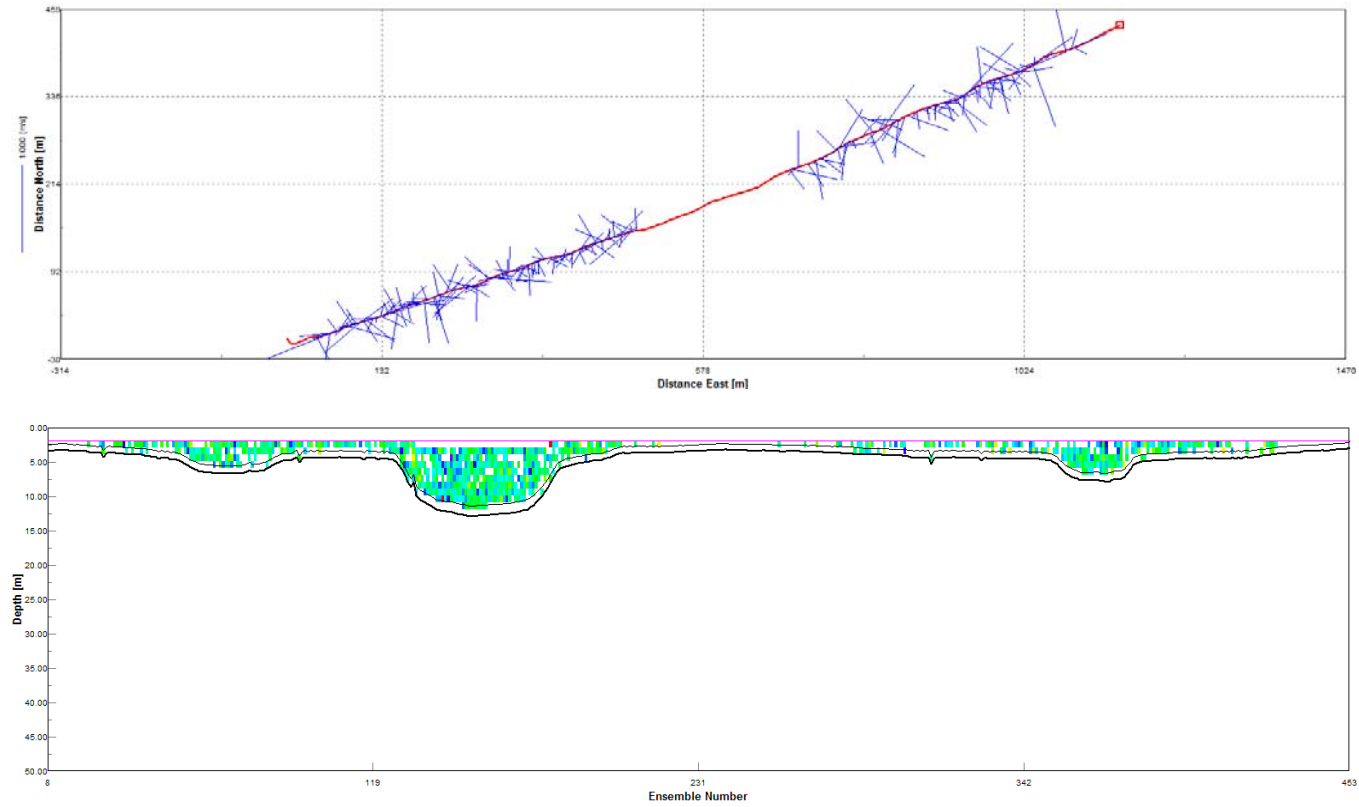
BTE6 – Central Budd  
(July 10, 2007 11:54 a.m.)  
Flood = 3,288 cms



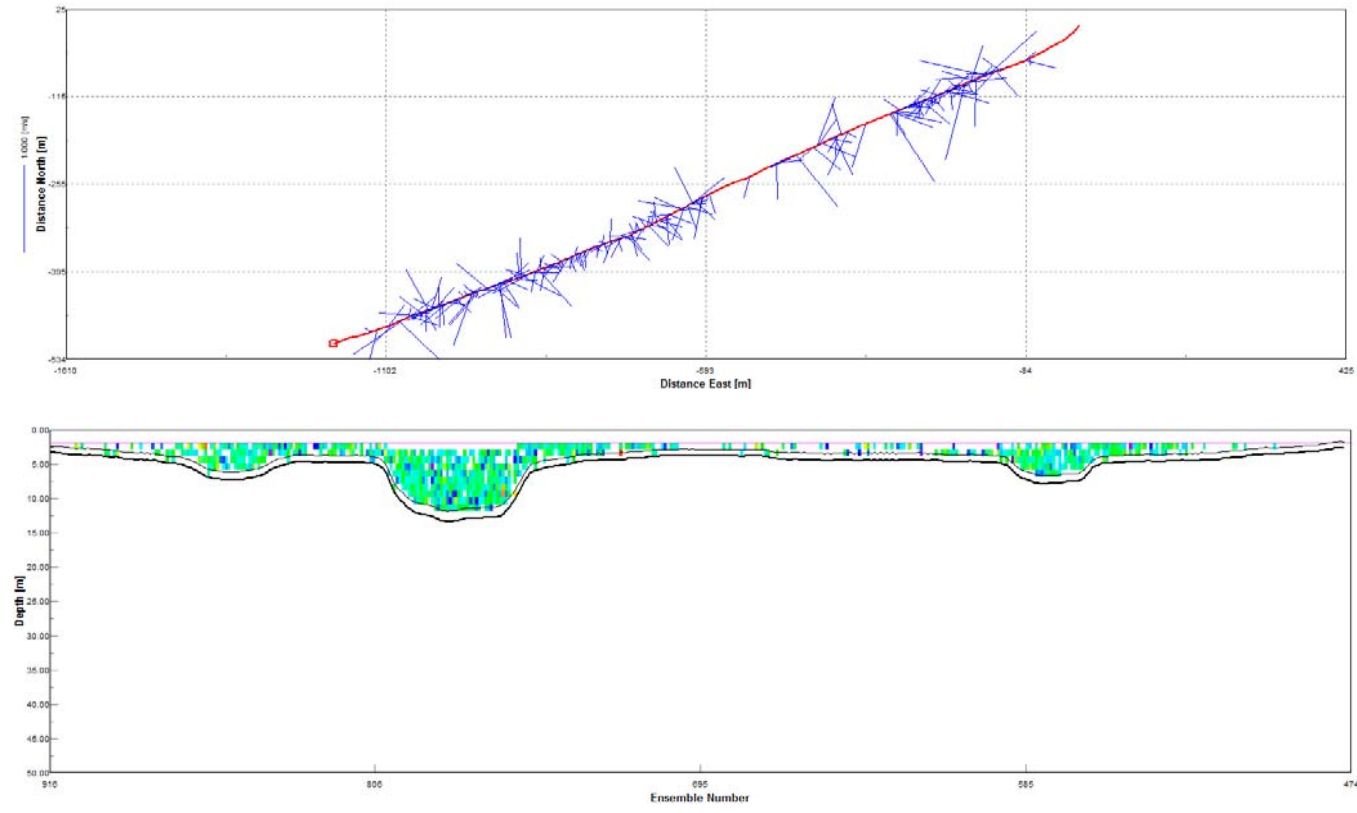
BTE7 – Priest Pt in Budd  
(July 10, 2007 12:41 p.m.)  
Flood = 703 cms



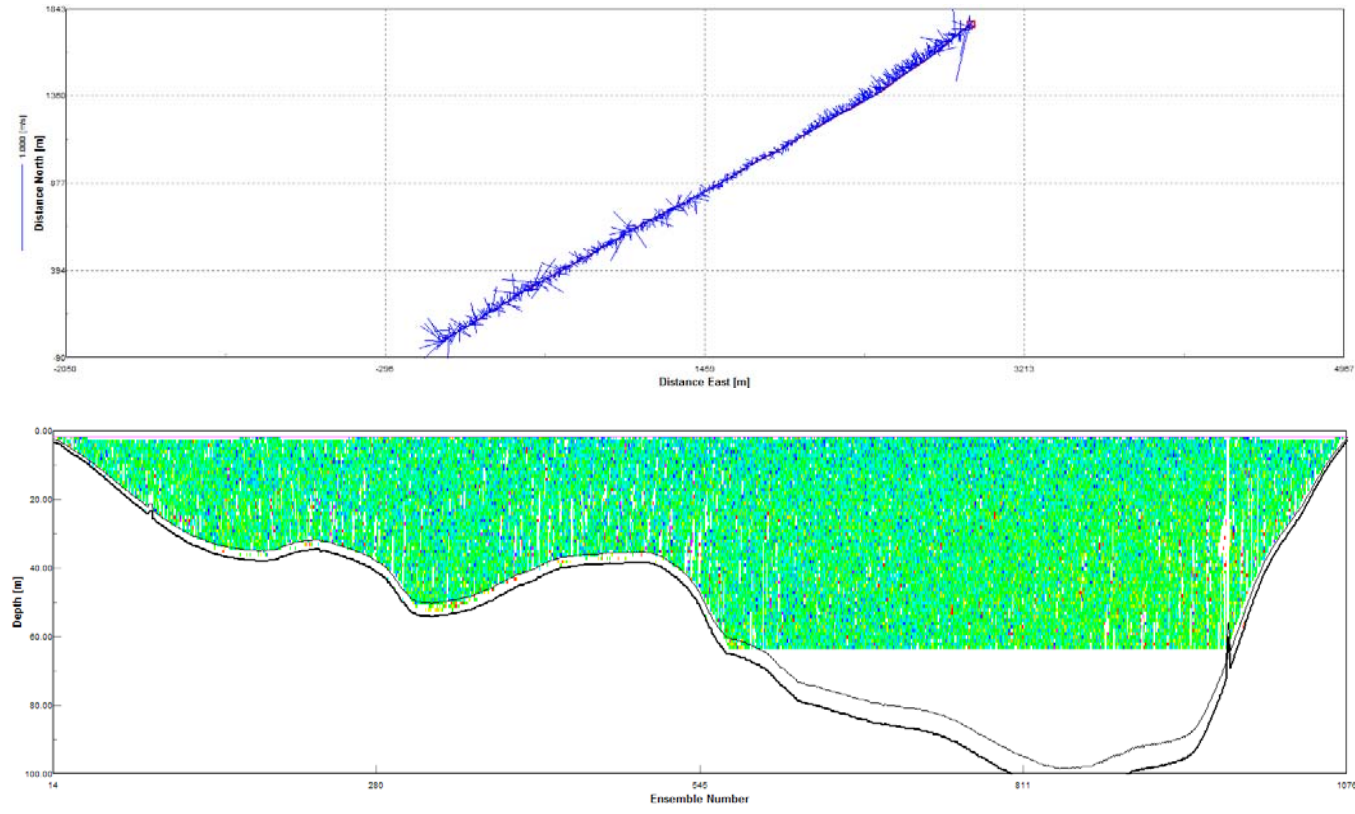
BTE8a – S. Budd Inlet  
(July 10, 2007 1:11 p.m.)  
Flood = 597 cms



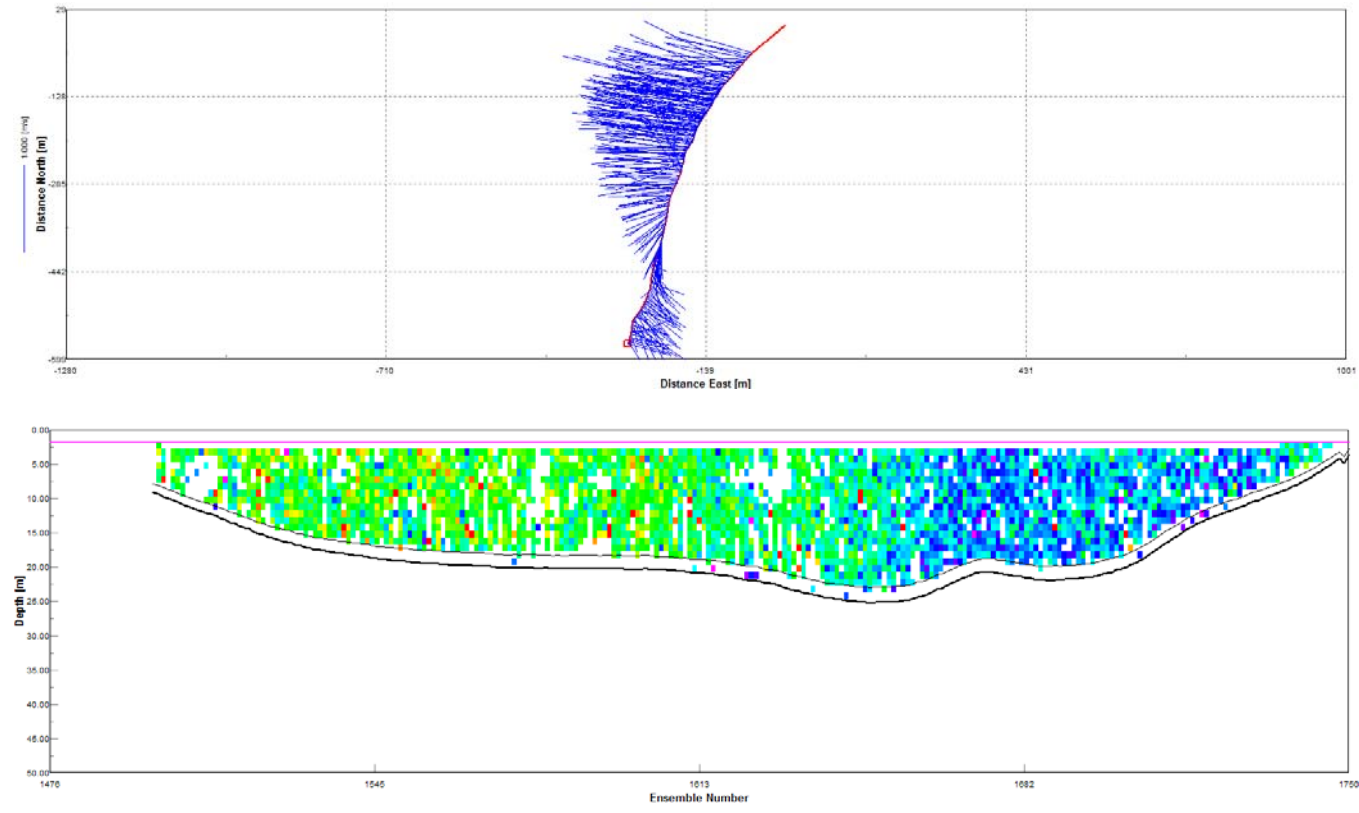
BTE8b - pass 2  
(July 10, 2007 1:29 p.m.)  
Flood = 665 cms



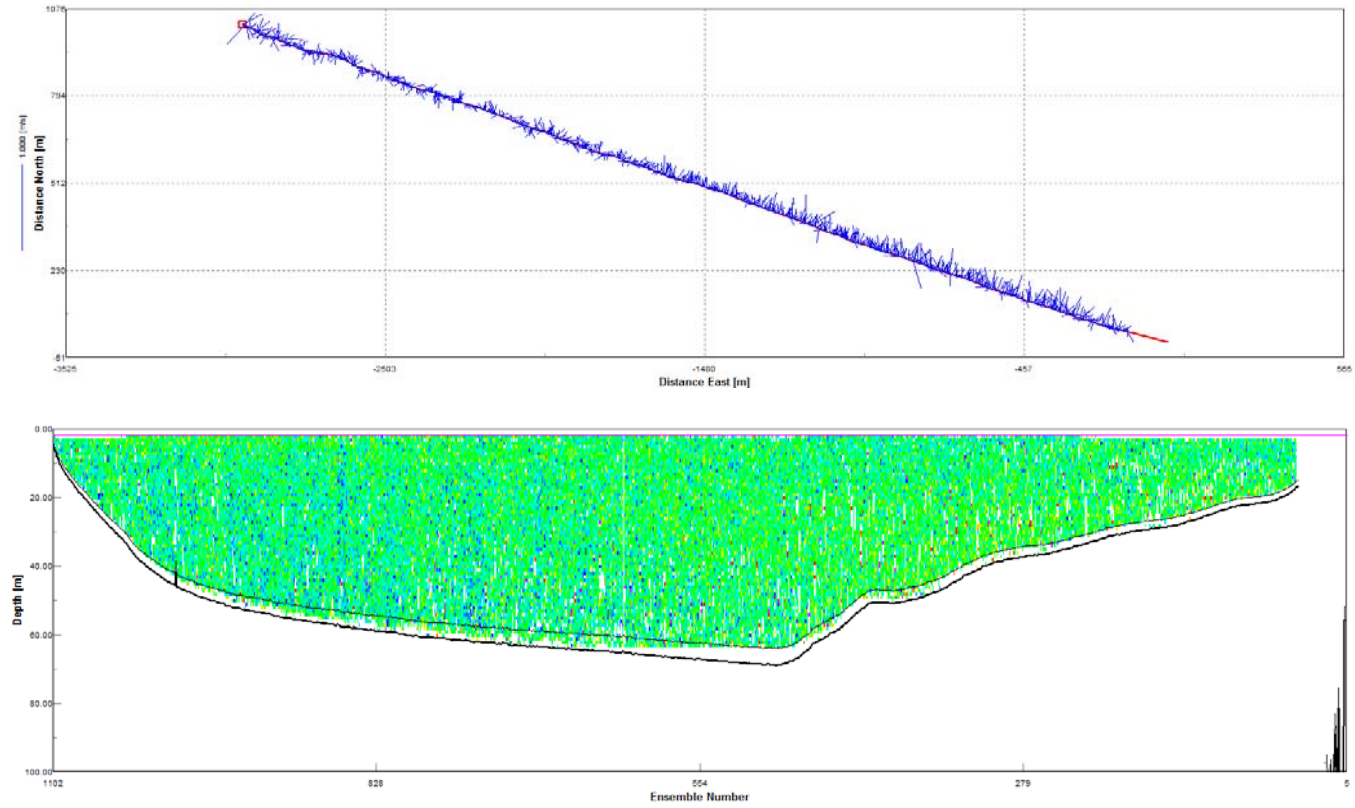
Carr1 – Green Pt.  
(July 11, 2007 10:13 a.m.)  
Flood = 6,825 cms



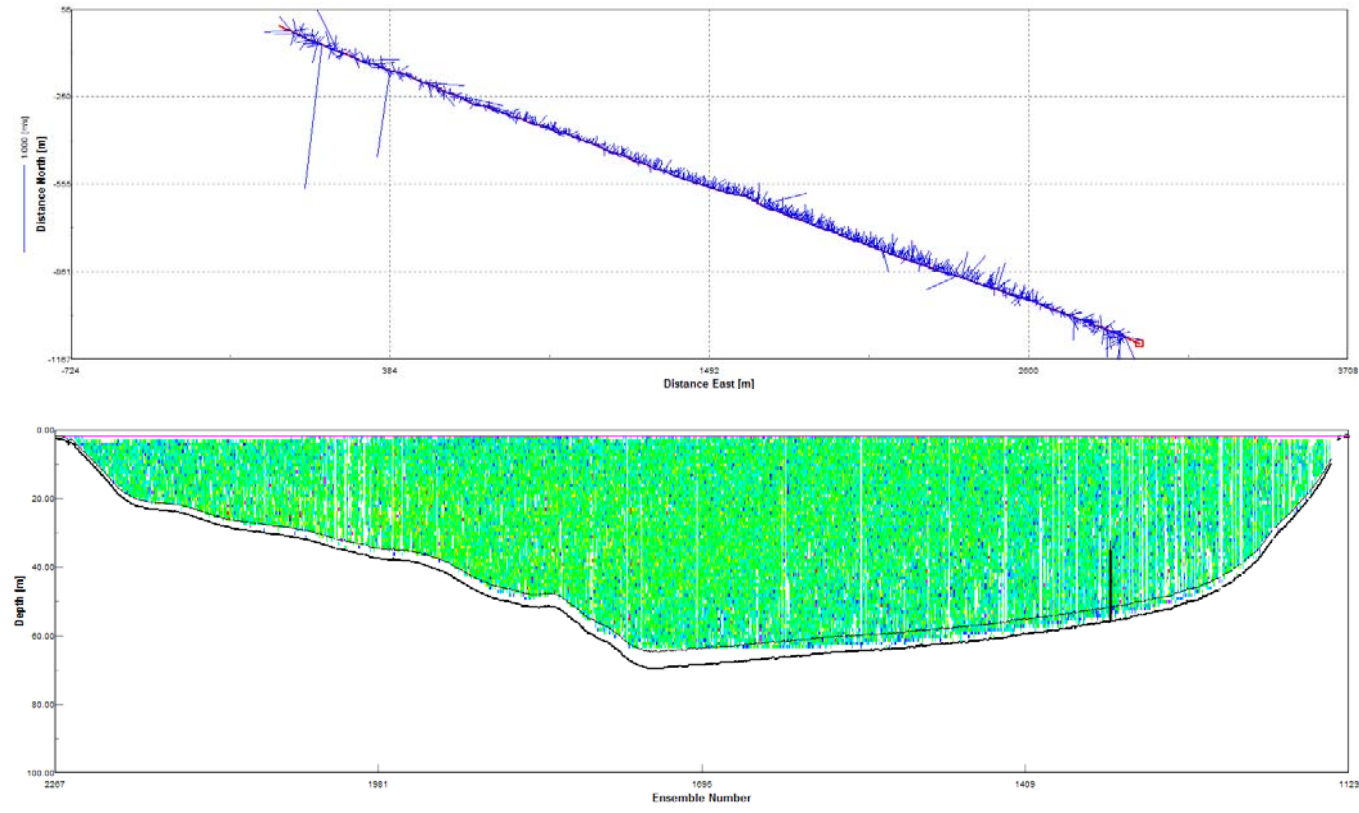
Carr2 – Hale Passage  
(July 11, 2007 11:10 a.m.)  
Total = 5,579 cms (Flood = 6,498 cms and Ebb = 919 cms)



Carr3a – S. of Cutts Island  
(July 11, 2007 11:40 a.m.)  
Flood = 6,853 cms

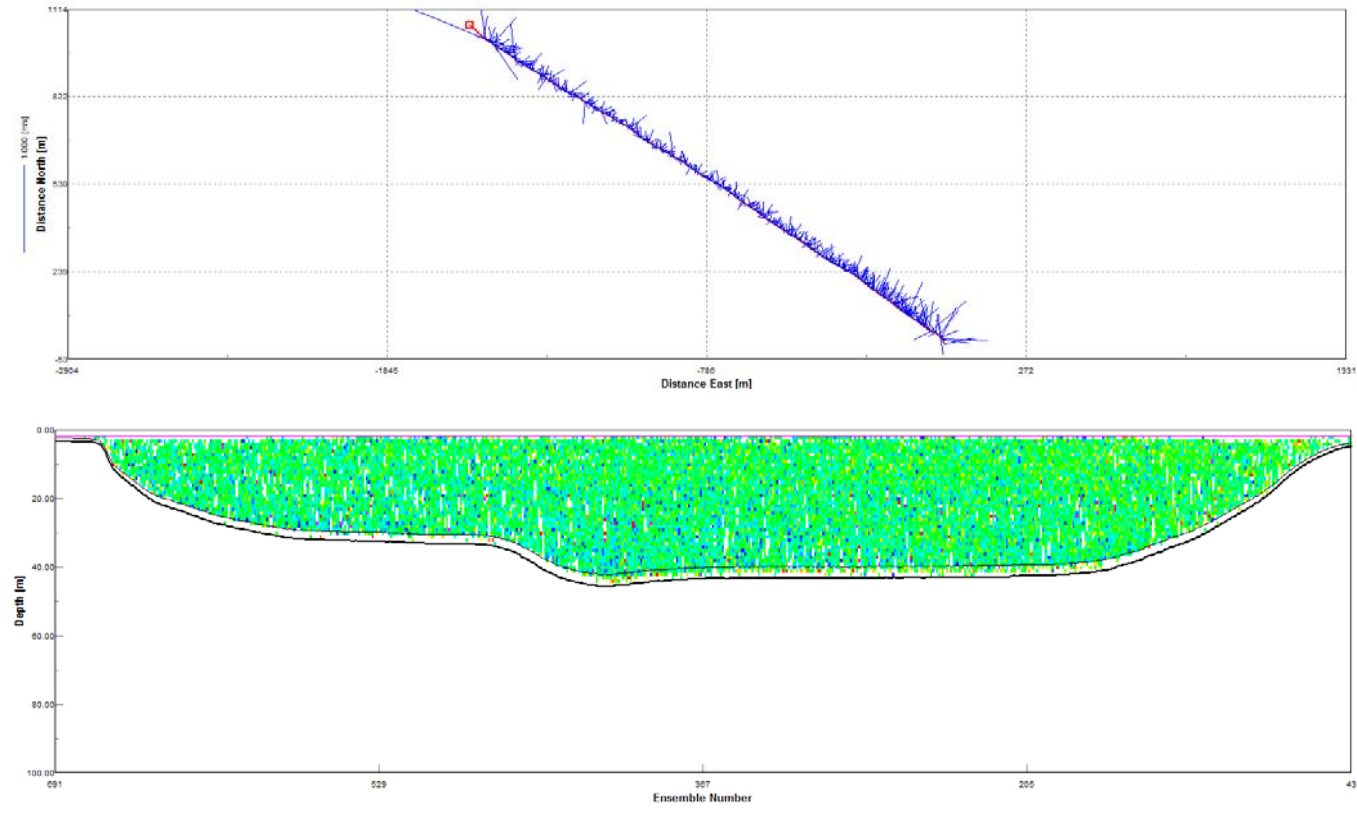


Carr3b - pass 2  
(July 11, 2007 12:22 p.m.)  
Flood = 6,889 cms

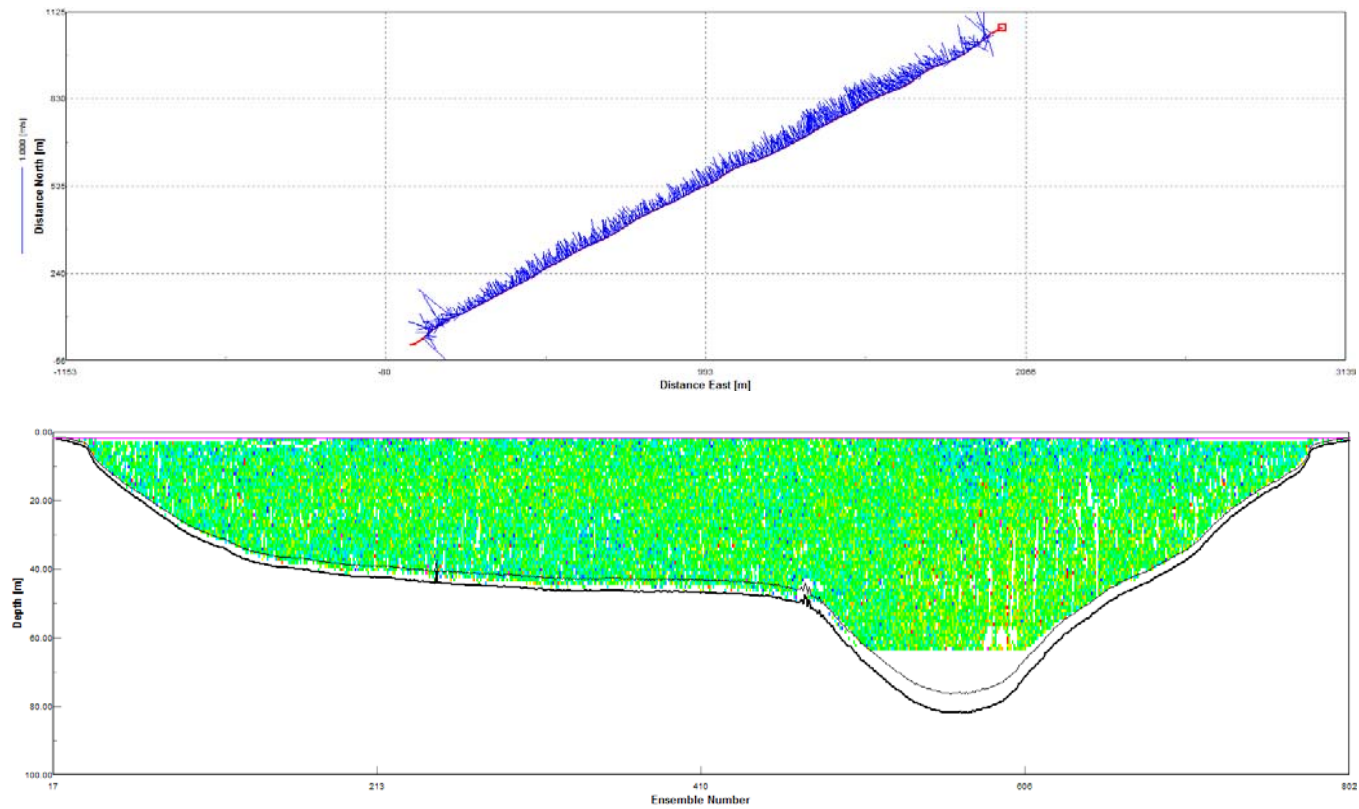




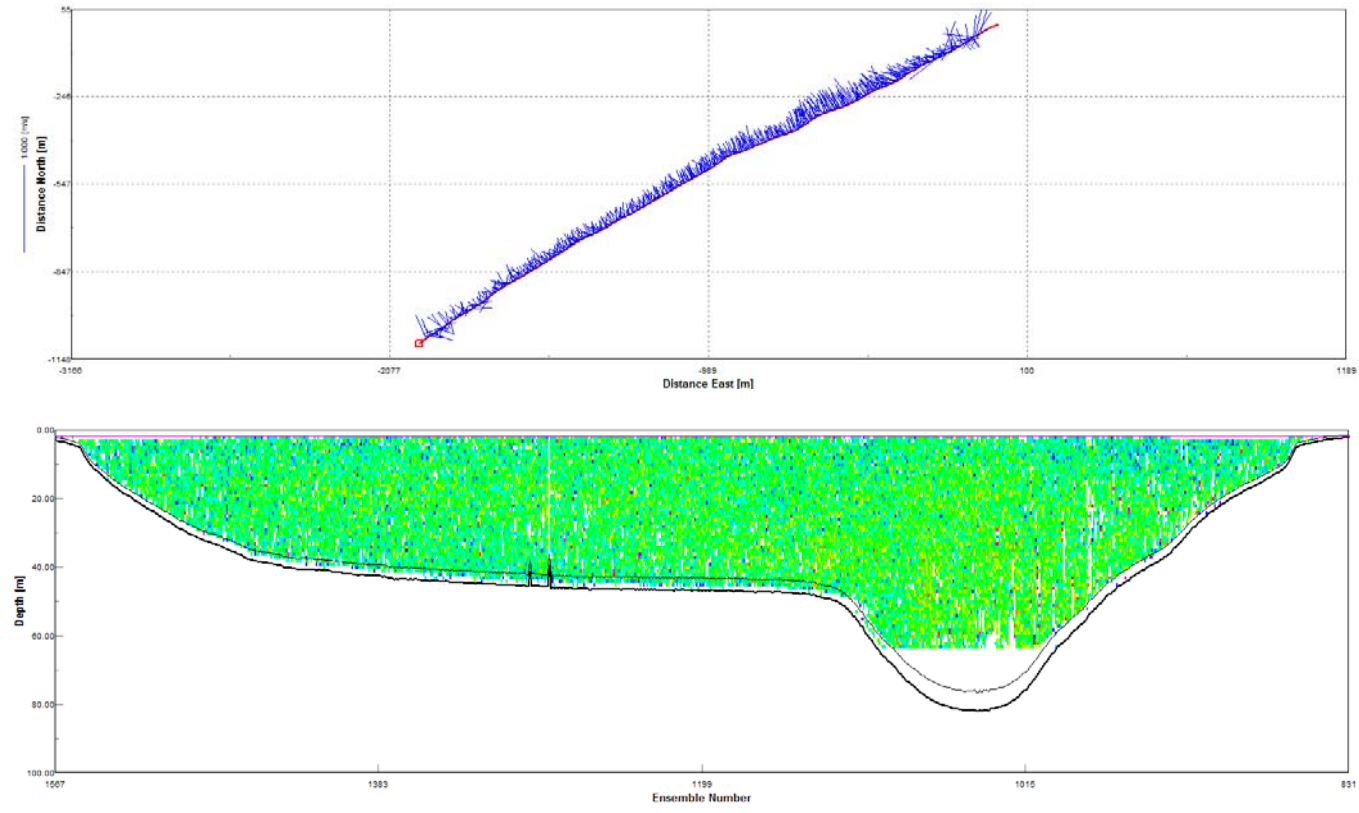
Carr4 – Allen Pt.  
(July 11, 2007 1:25 p.m.)  
Flood = 3,580 cms



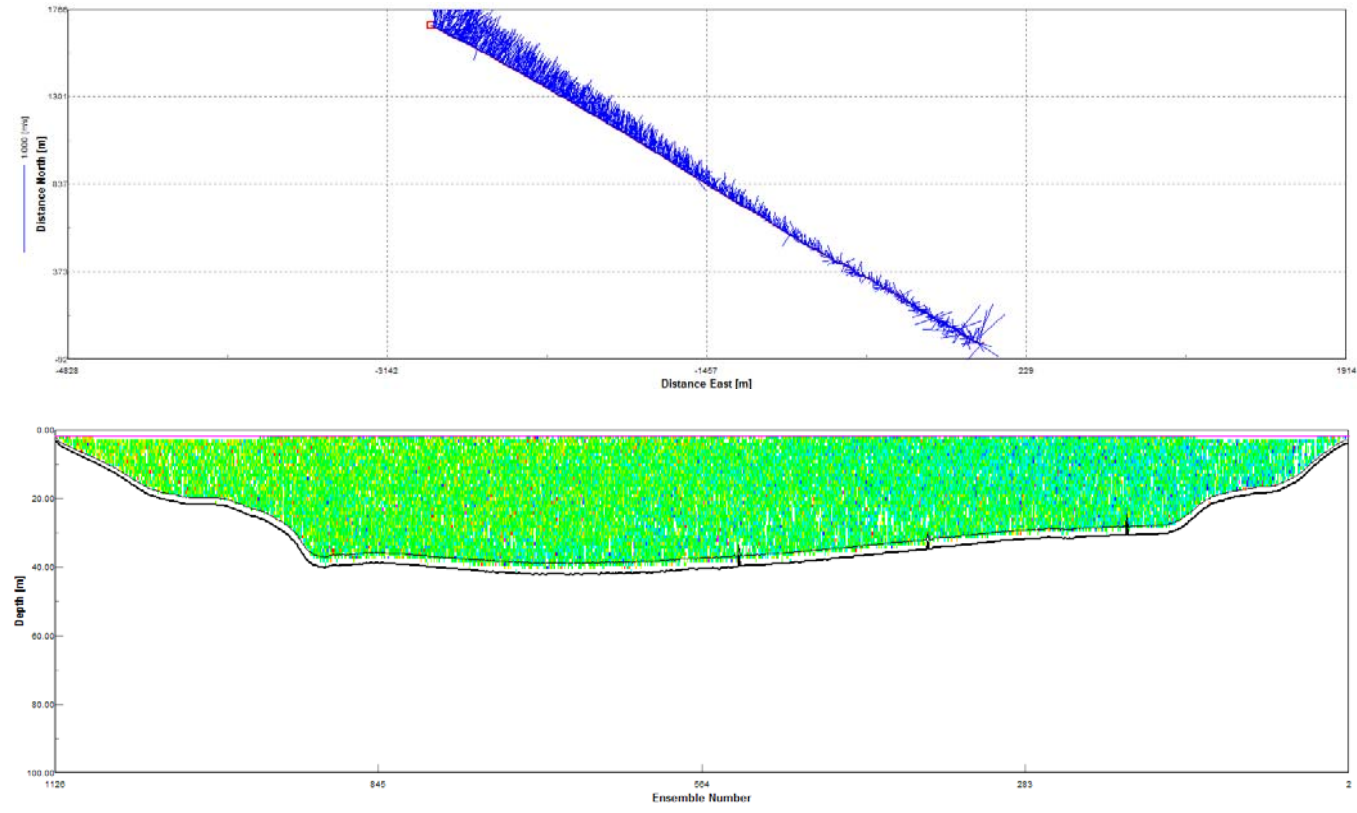
Case1a – S. of McMicken Island  
(July 11, 2007 2:53 p.m.)  
Flood = 13,851 cms



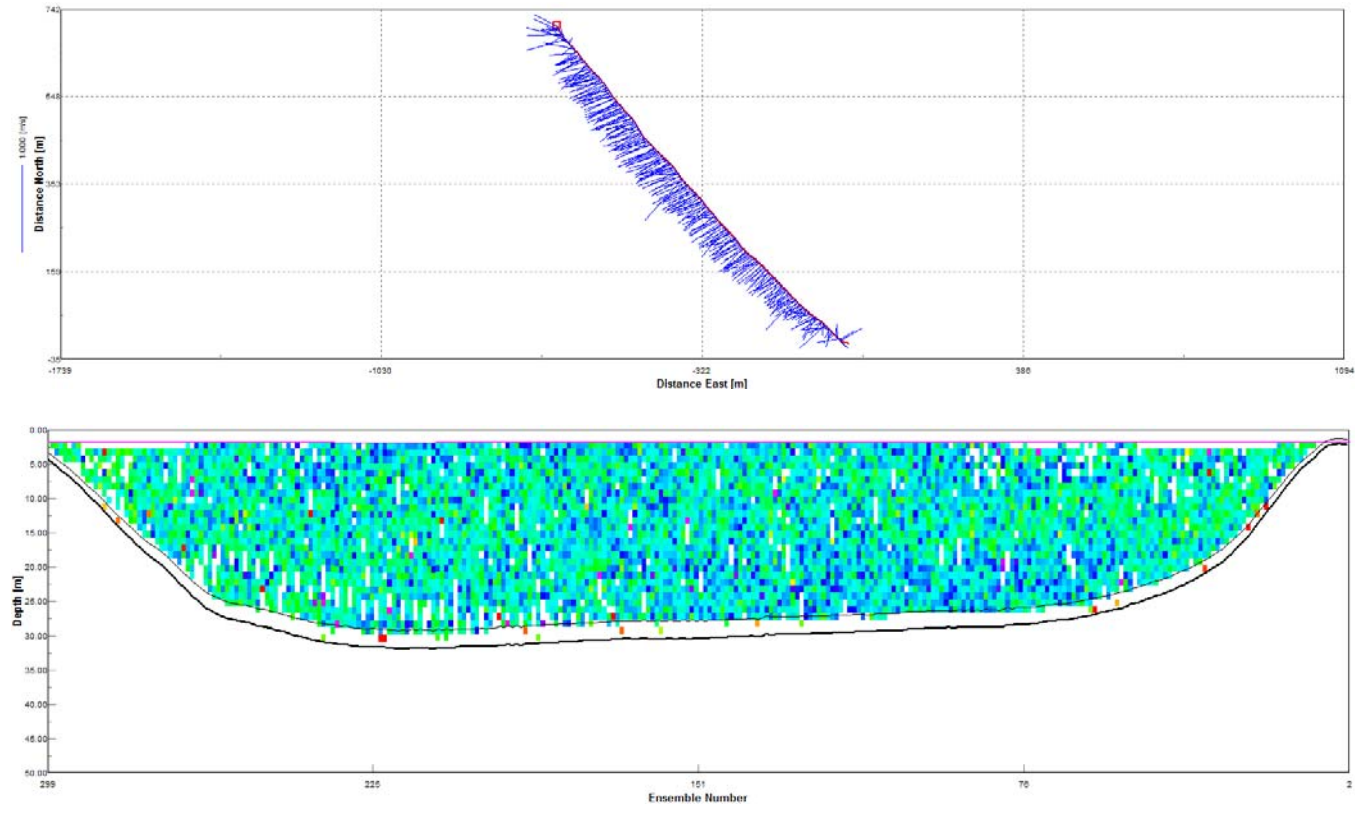
Case1b - pass 2  
(July 11, 2007 3:25 p.m.)  
Flood = 11,978 cms



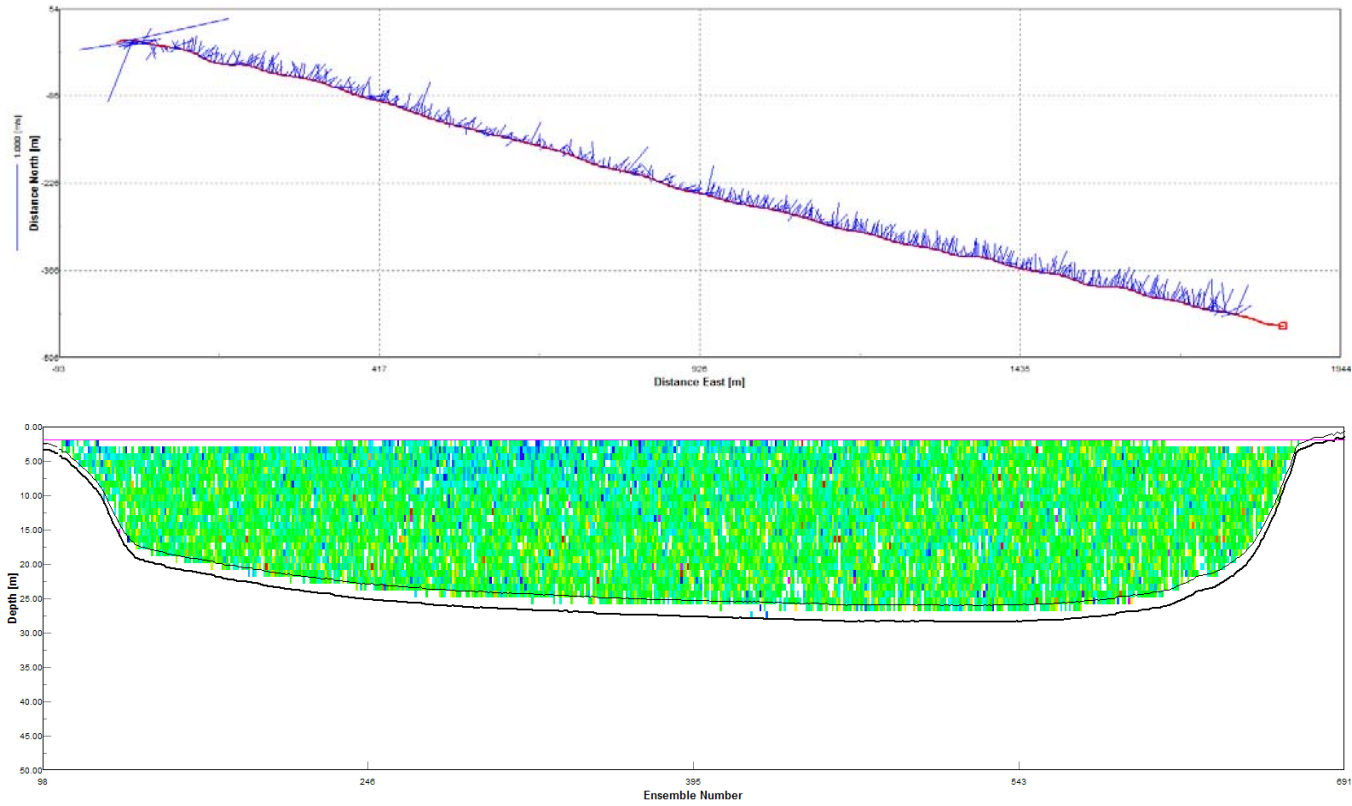
Case2 – N. of Herron Island  
(July 12, 2007 12:23 p.m.)  
Flood = 13,662 cms



Case3 – N. of Harstine  
(July 12, 2007 1:17 p.m.)  
Flood = 7,526 cms



Case4 – E. of Stretch Island  
(July 12, 2007 1:47 p.m.)  
Flood = 4,789 cms



Case5 – Rocky Pt.  
(July 12, 2007 2:25 p.m.)  
Flood = 1,562 cms

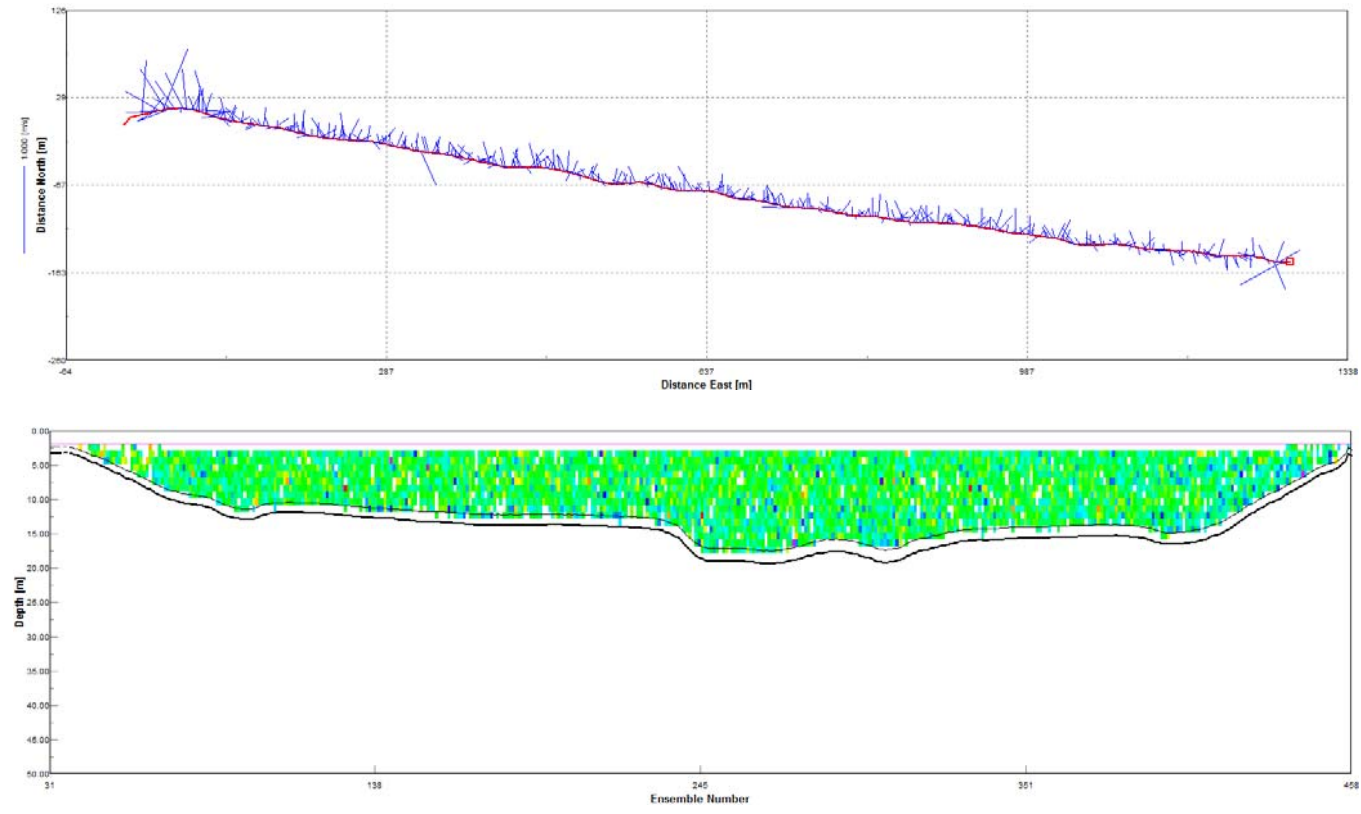
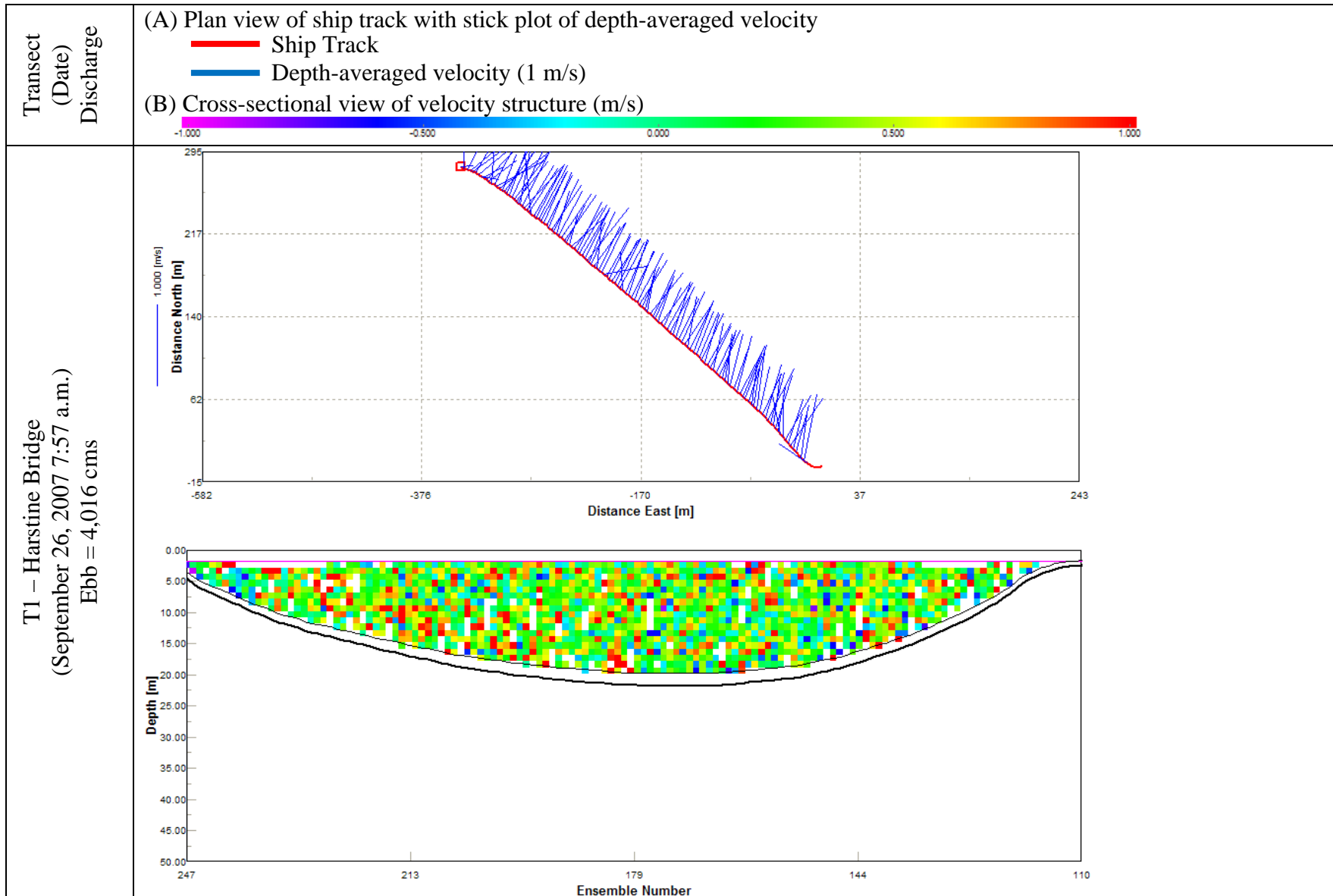
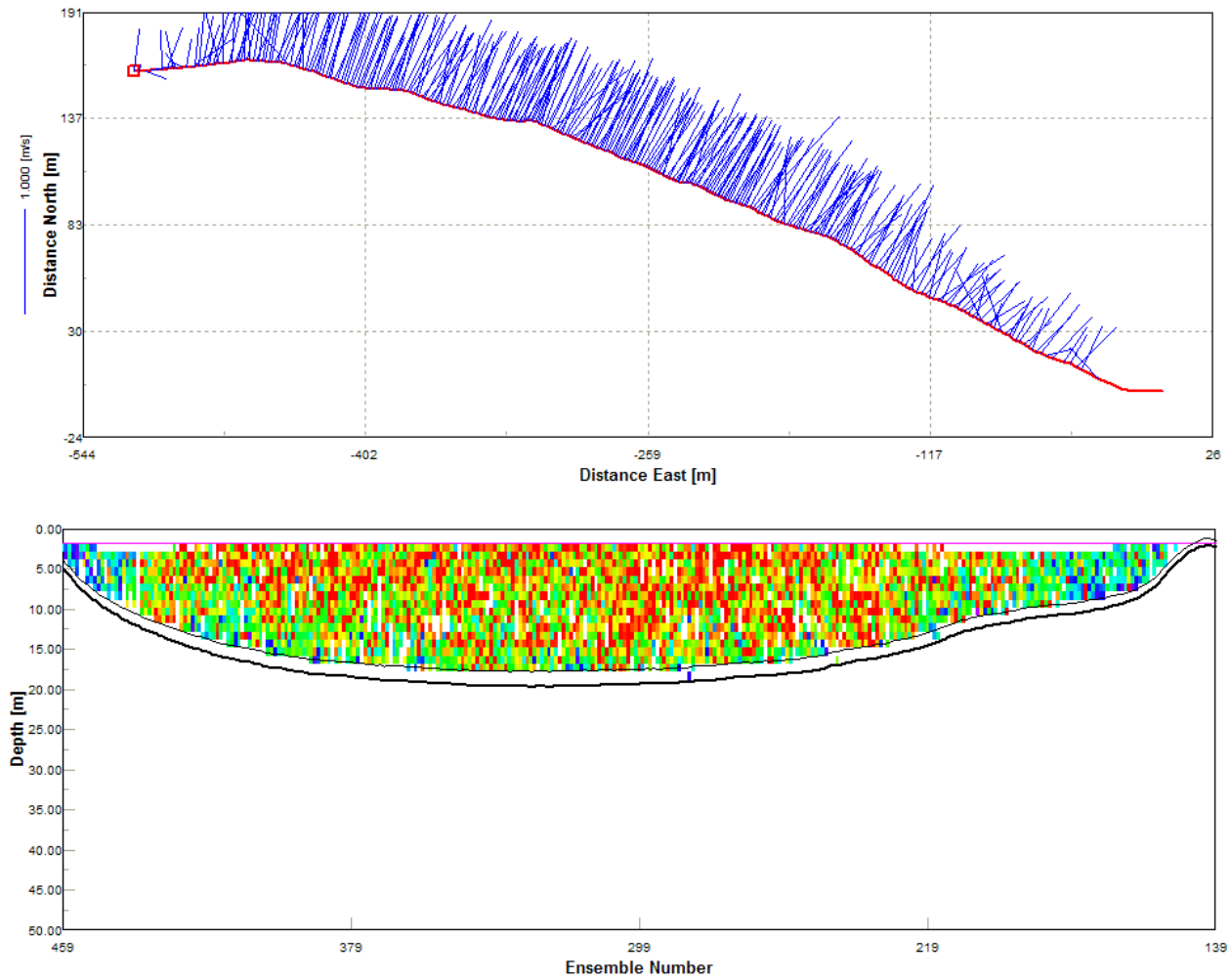


Table E-2. Ebb-tide transects recorded the morning of September 26, 2007. See Table E-1 for legend.

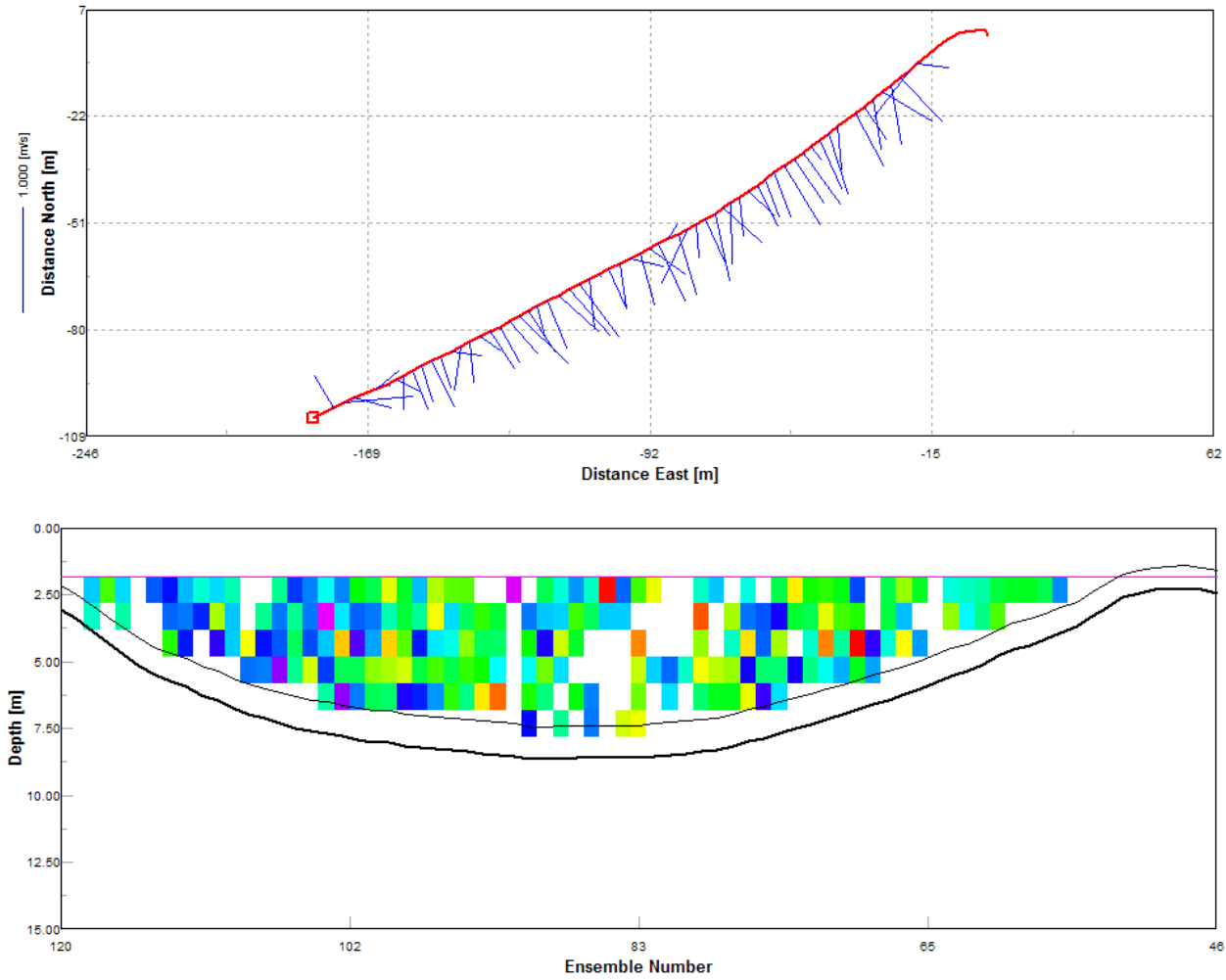




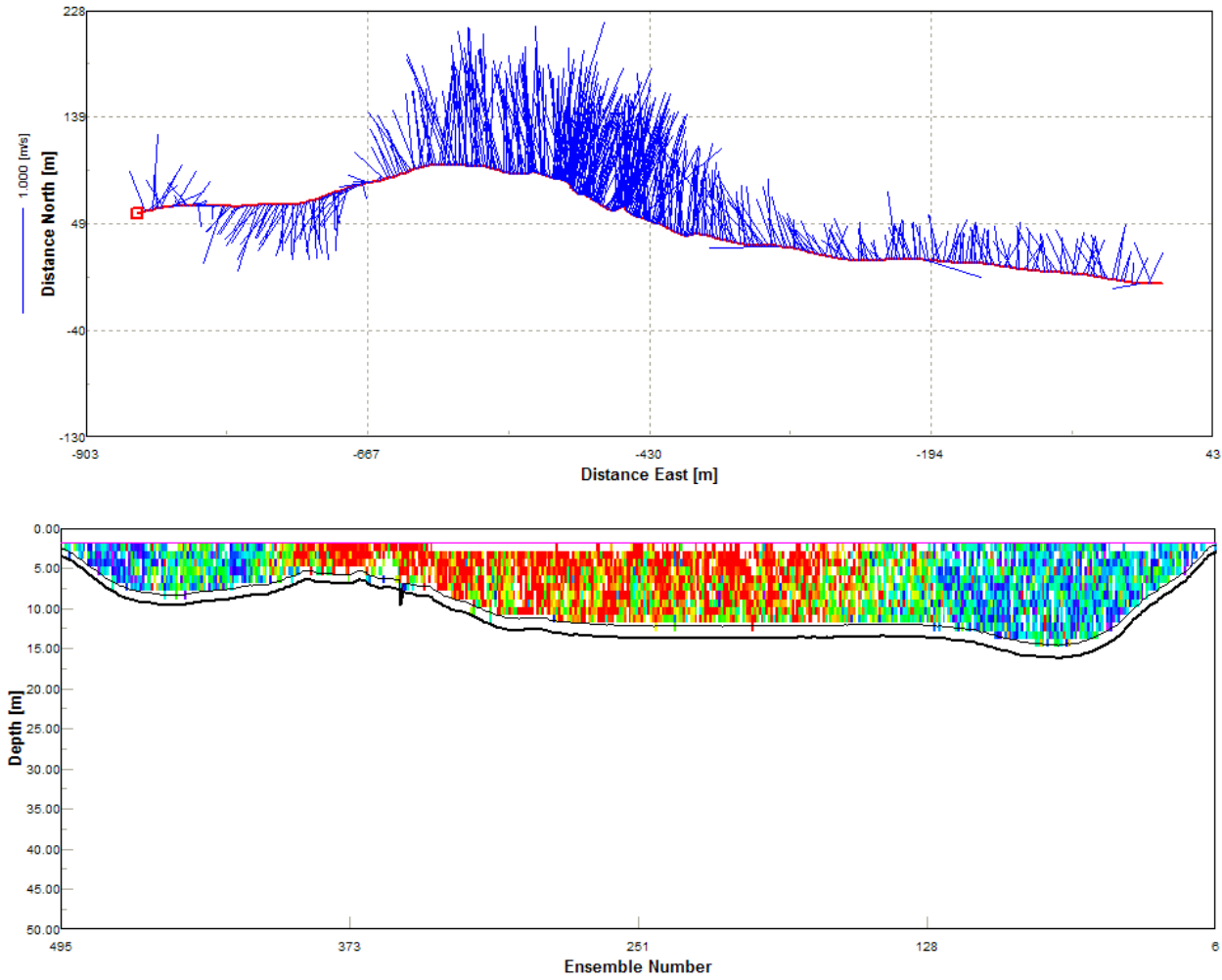
T2 – North Squaxin Pickering  
(September 26, 2007 8:18 a.m.)  
Ebb = 5,094 cms



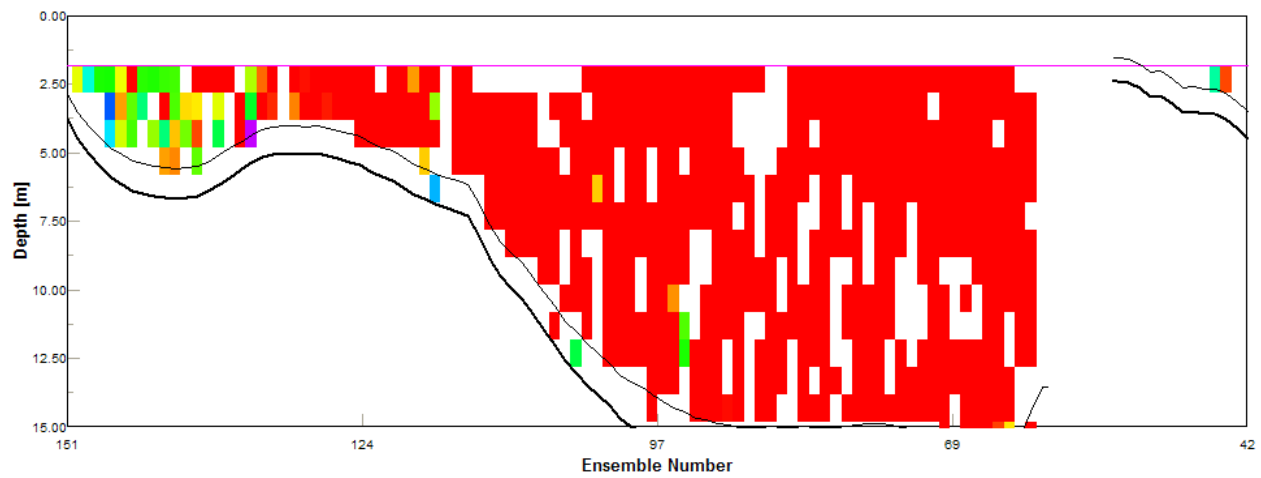
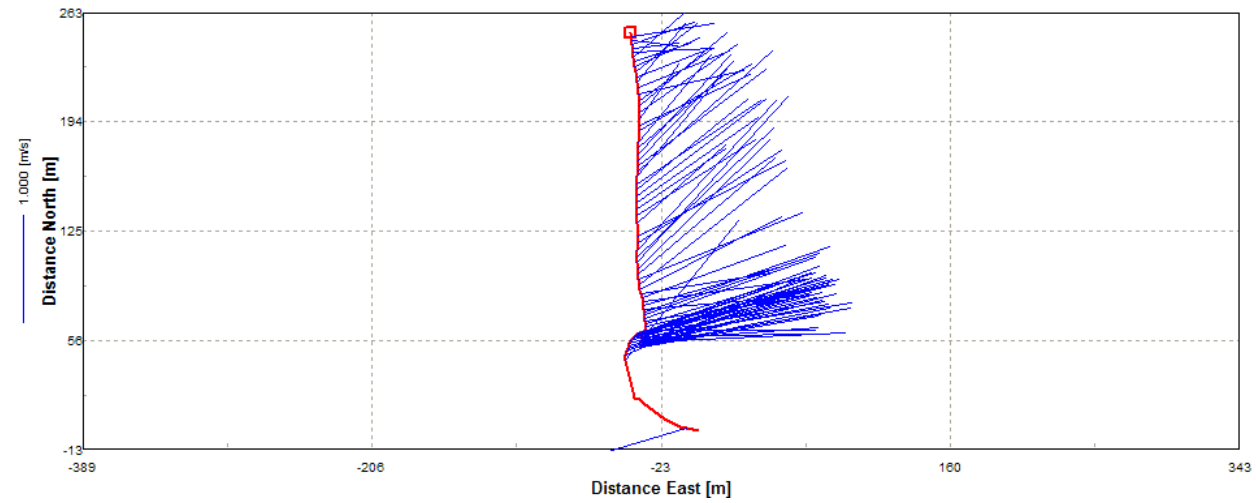
T3 – North Squaxin Peale  
(September 26, 2007 8:40 a.m.)  
Flood = 525 cms



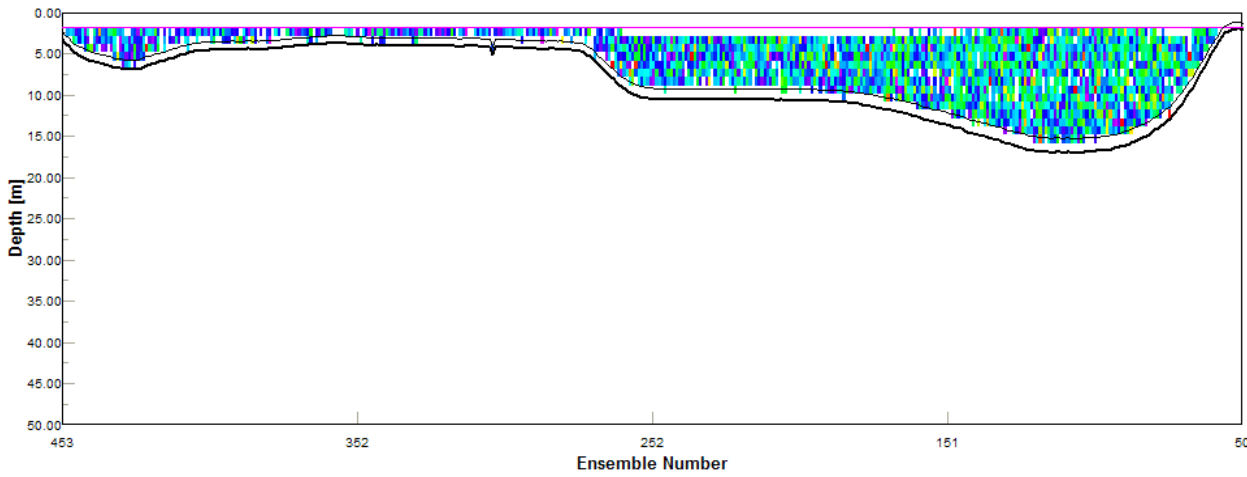
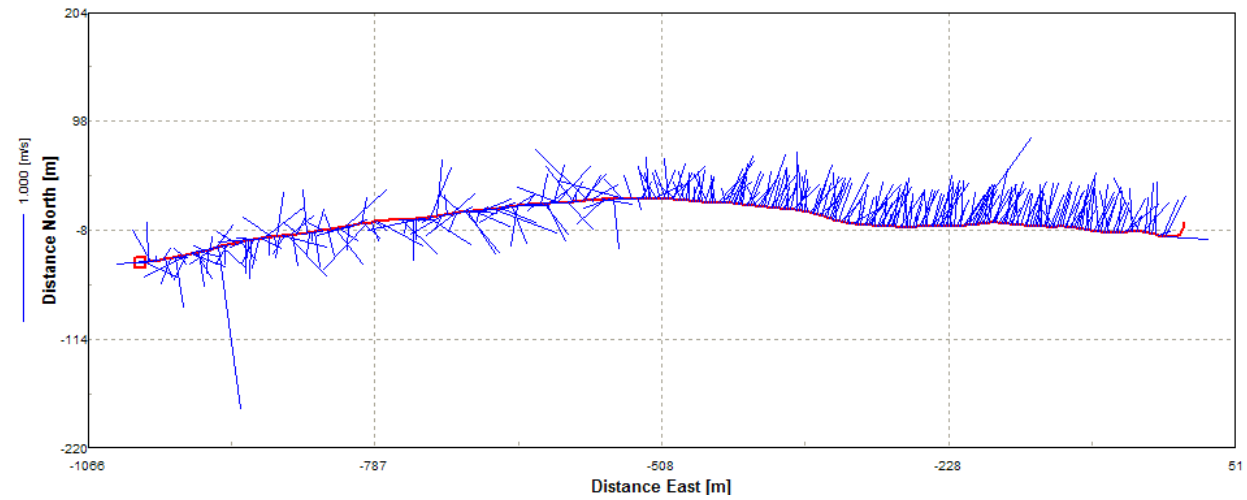
T4 – Hungerford Pt. (N. of Hope Island)  
(September 26, 2007 8:57 a.m.)  
Ebb = 3,547 cms



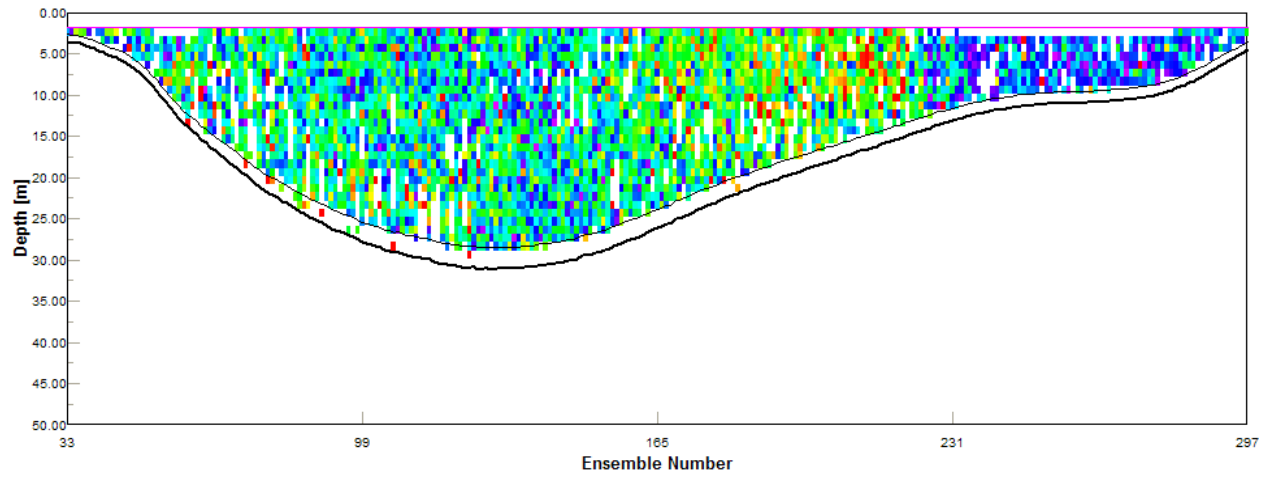
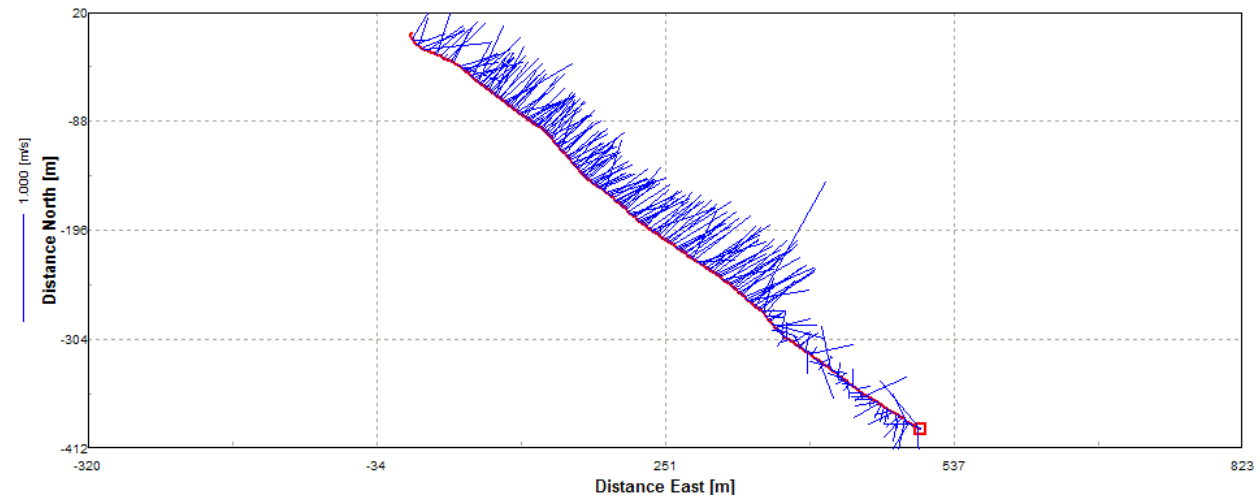
T5 – Hammersley Inlet  
(September 26, 2007 9:26 a.m.)  
Ebb = 3,162 cms



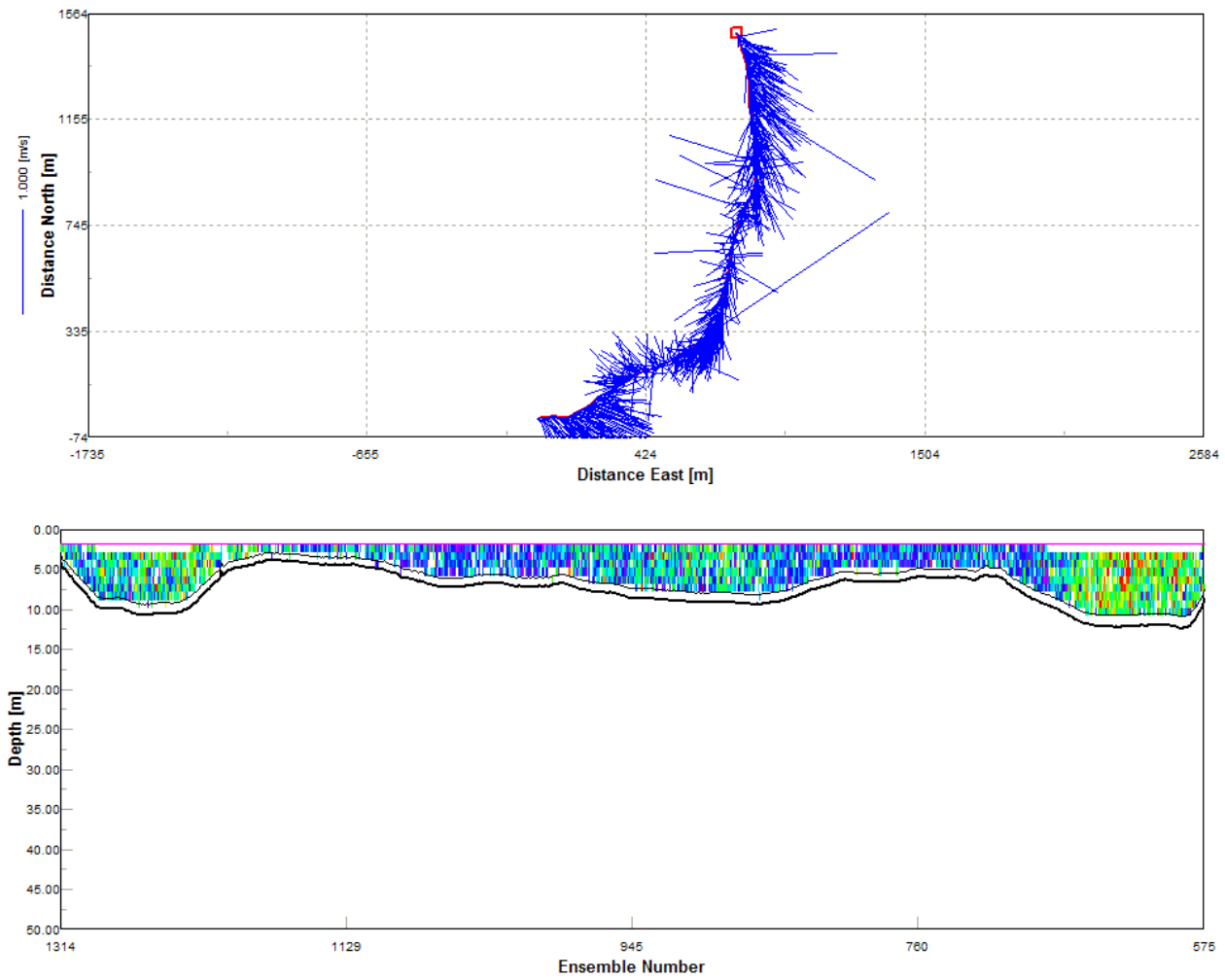
T6 – Potlatch Pt. (S. of Hope Island)  
(September 26, 2007 9:41 a.m.)  
Ebb = 1,828 cms



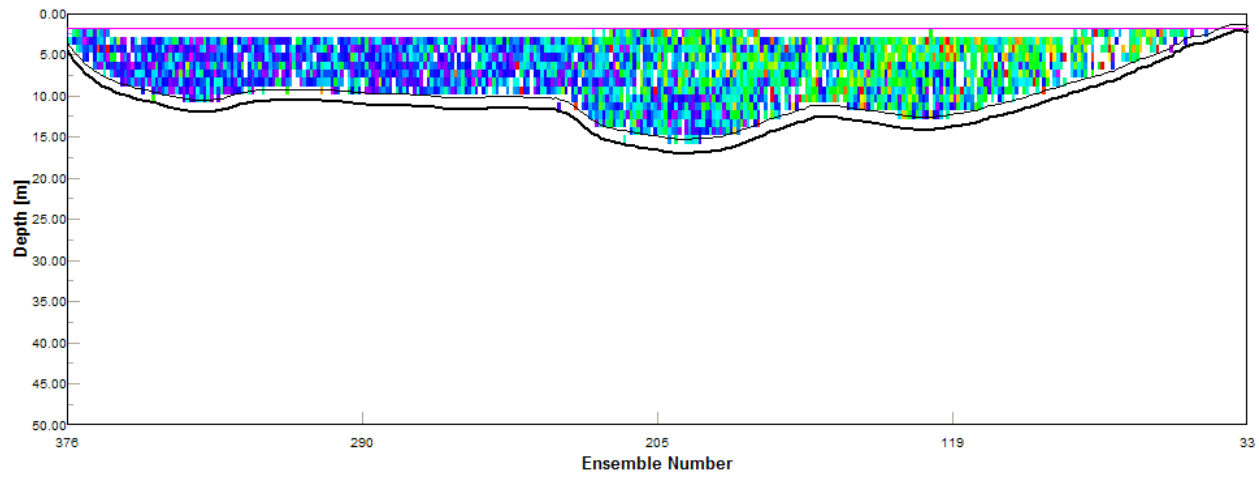
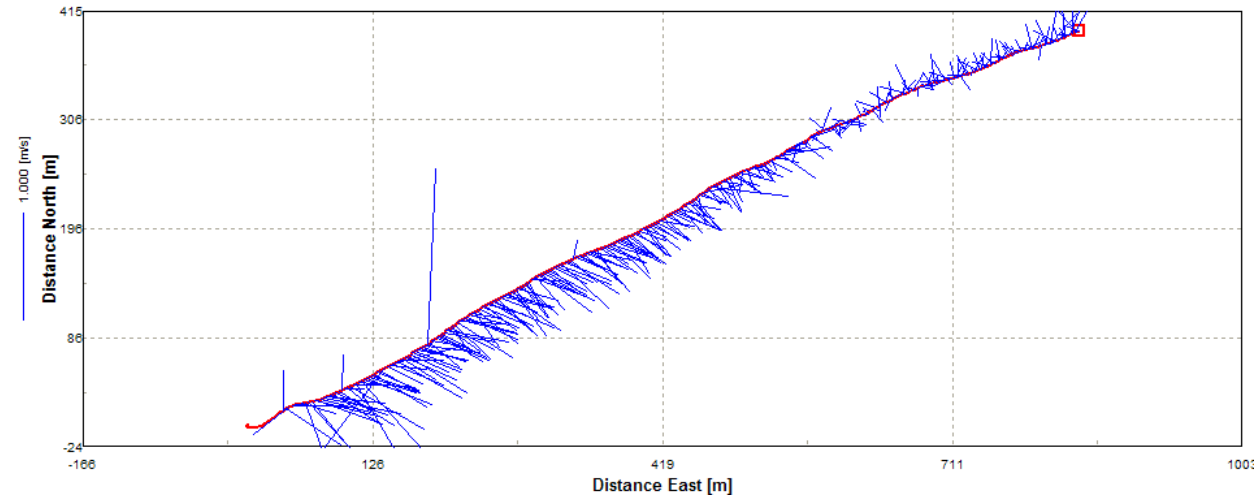
T7 – Totten  
(September 26, 2007 10:06 a.m.)  
Ebb = 3,953 cms



T11 – Hope Island Inner  
(September 26, 2007 10:27 a.m.)  
Ebb = 2,105 cms



T8 – S. Squaxin  
(September 26, 2007 11:05 a.m.)  
Ebb = 1,866 cms





T9 – Hope Island Outer  
(September 26, 2007 11:28 a.m.)  
Ebb = 1,356 cms

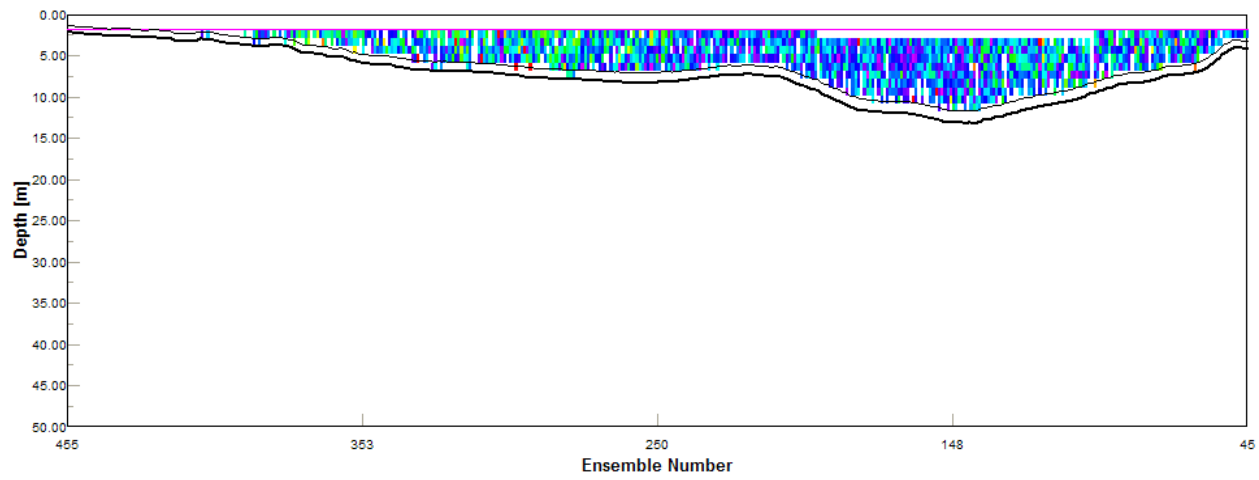
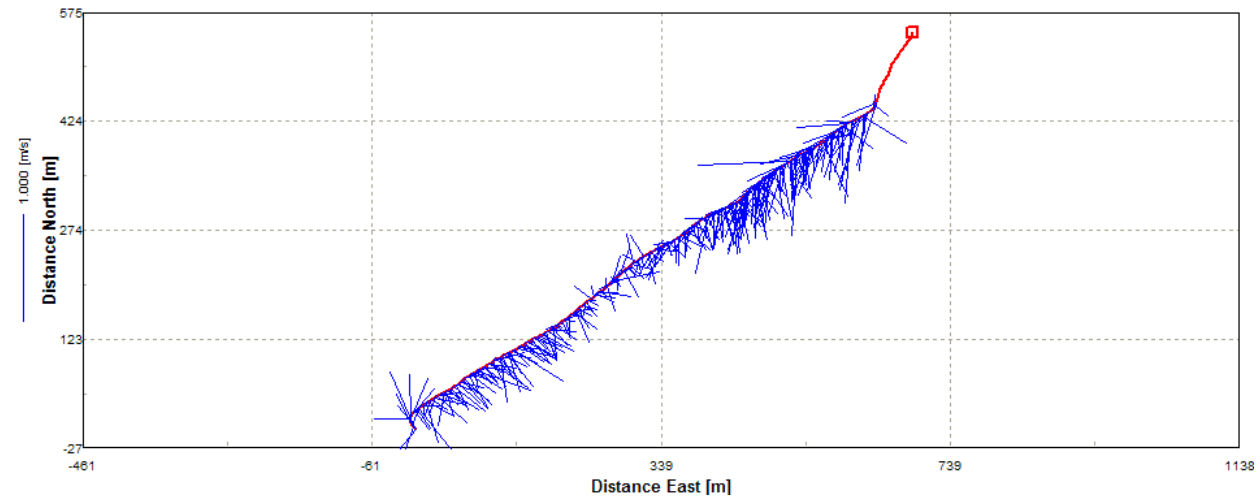
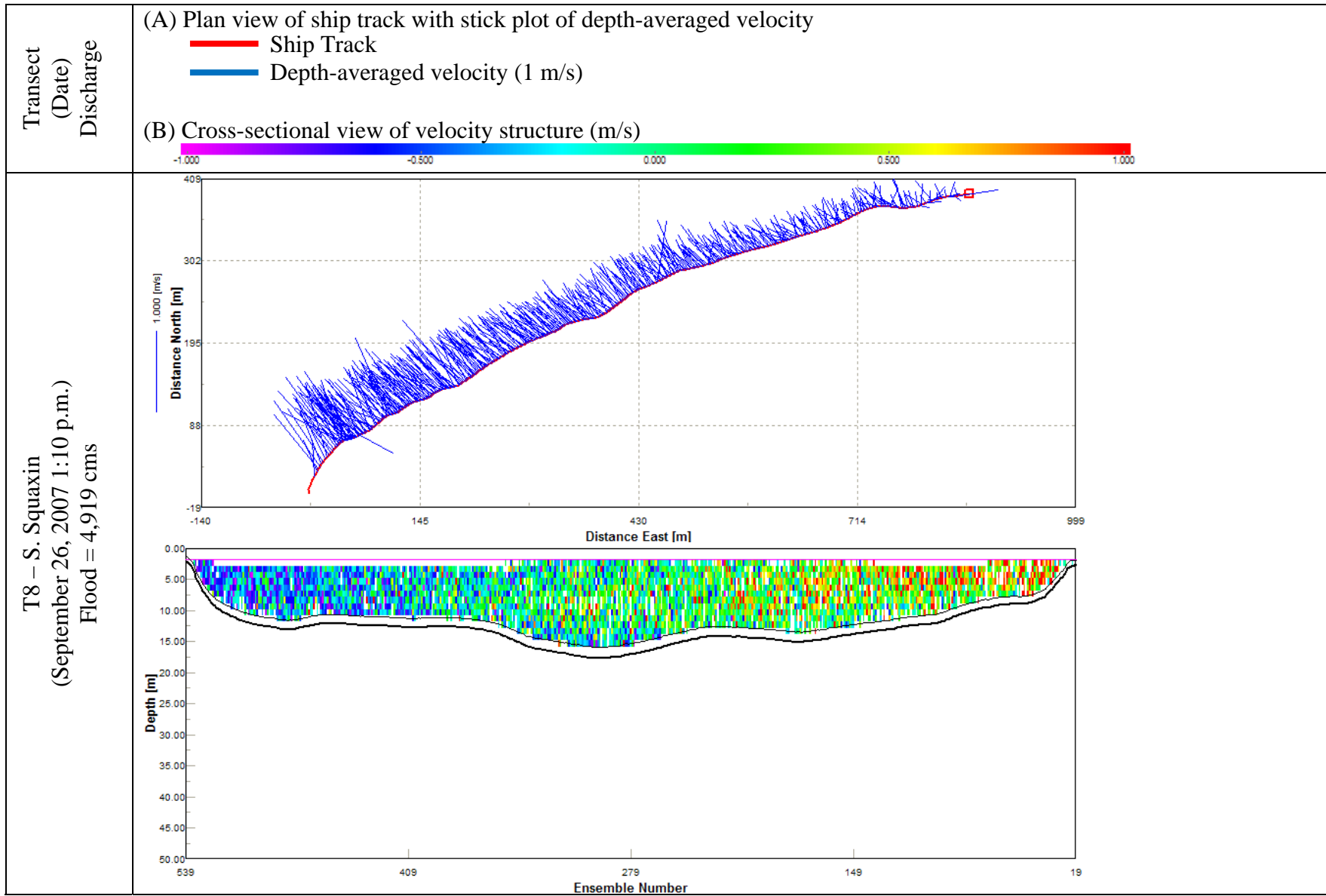
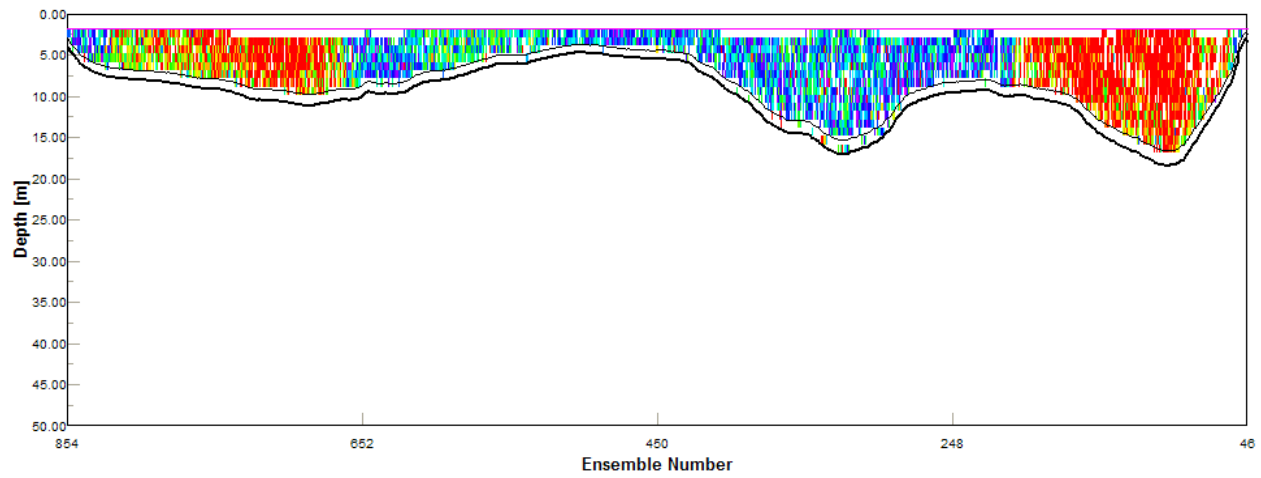
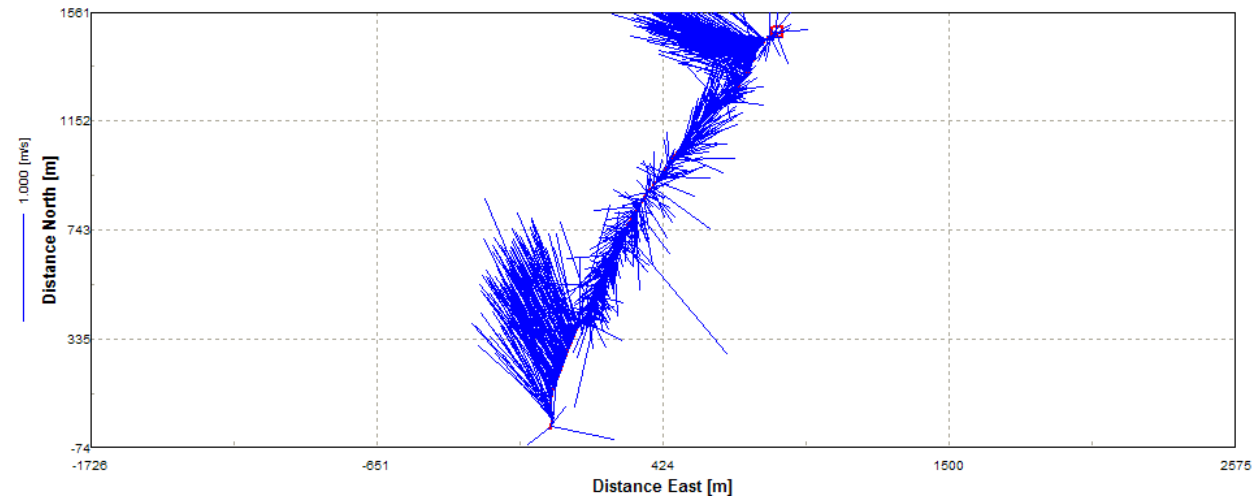


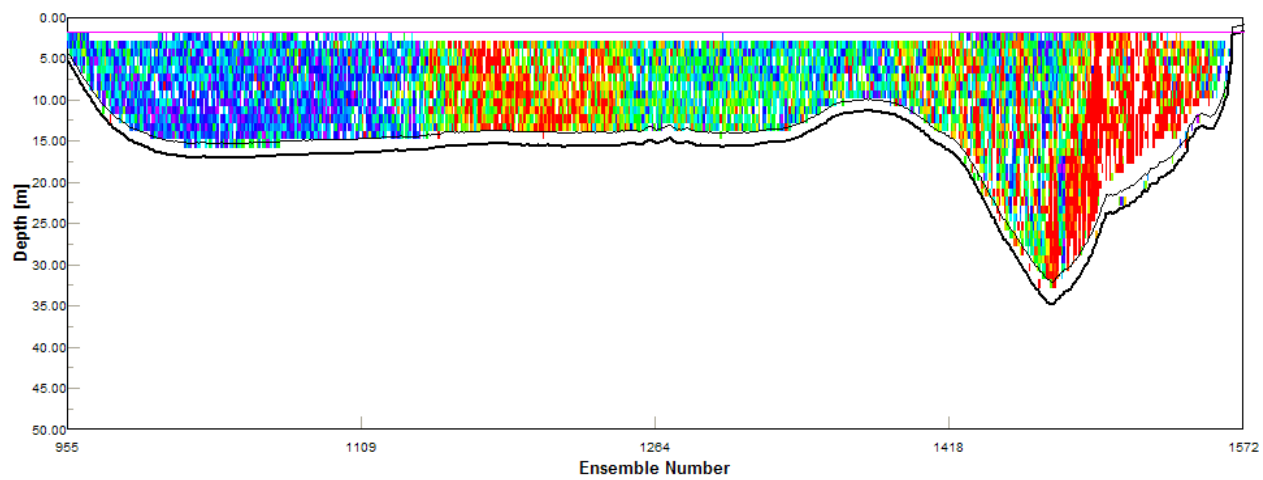
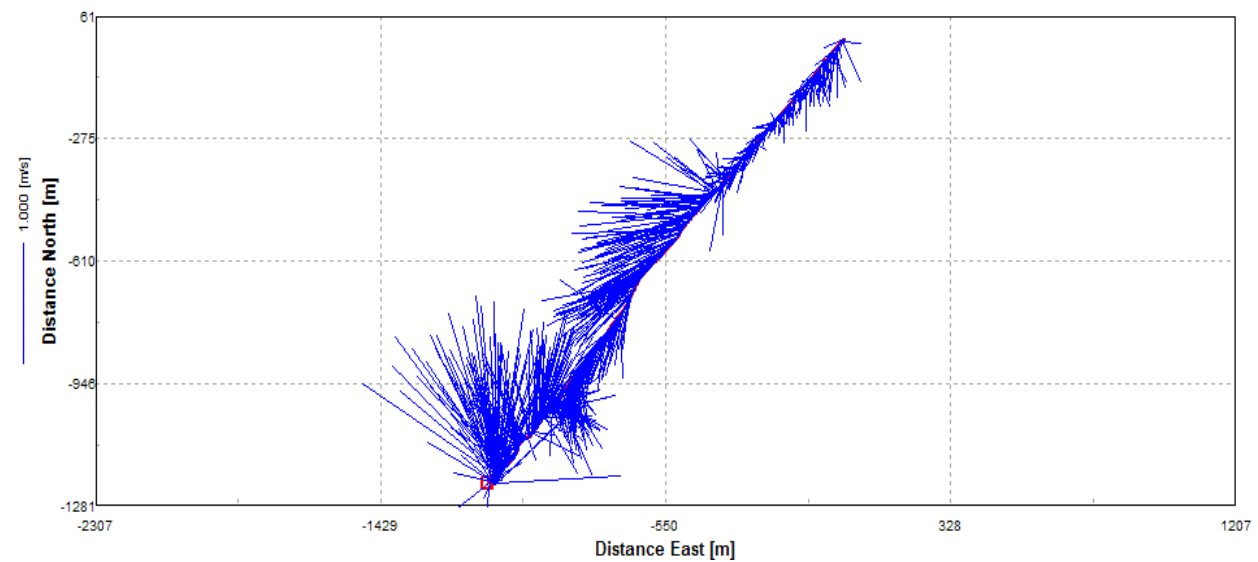
Table E-3. Flood-tide transects conducted the afternoon of September 26, 2007. See Table E-1 for legend.



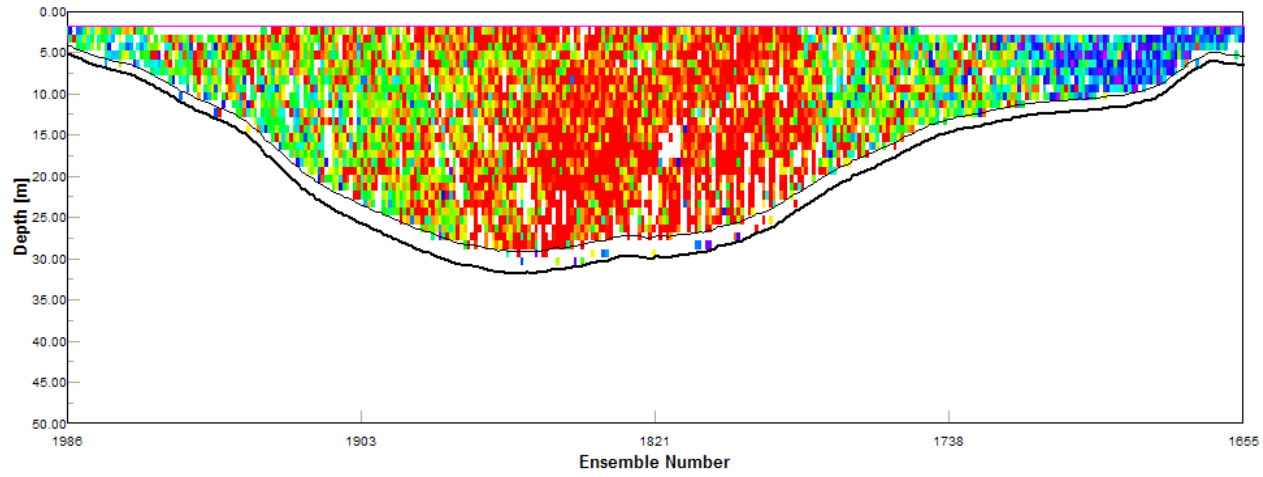
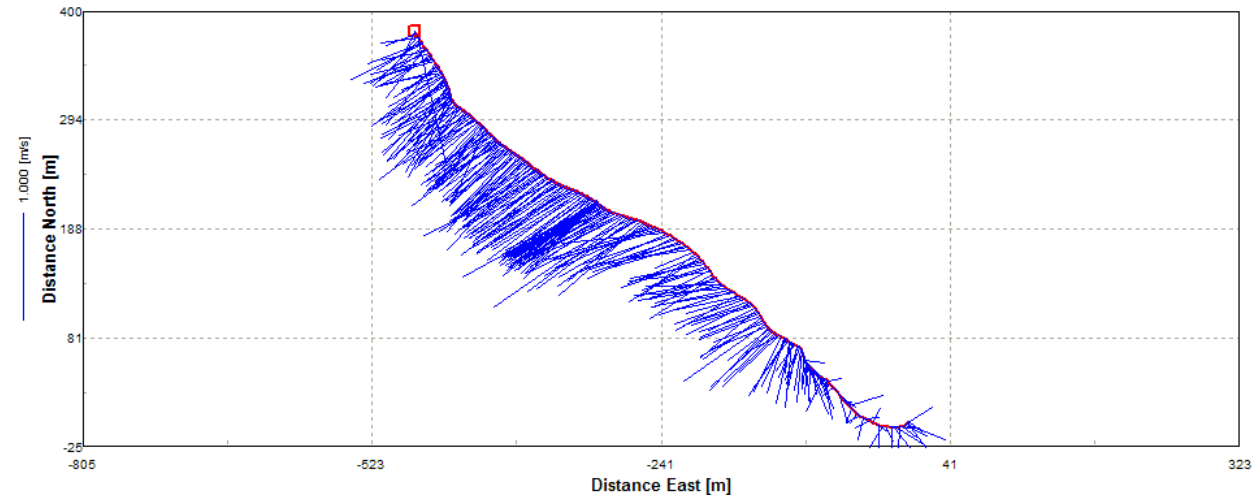
T12 – Hope Island Inner  
(September 27, 2007 1:40 p.m.)  
Flood = 4,957 cms



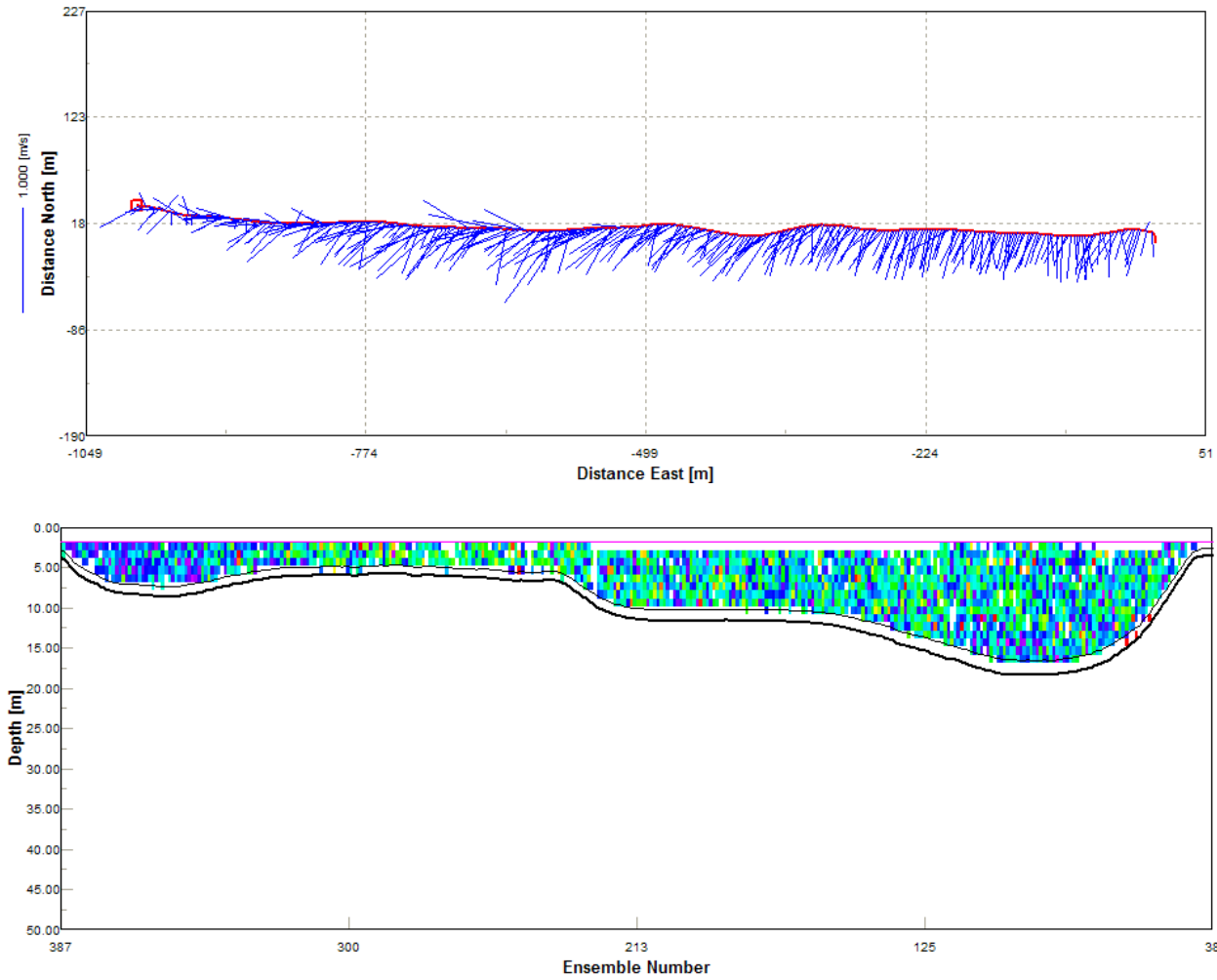
T14 – Hope Island Outer  
(September 26, 2007 2:16 p.m.)  
Flood = 4,080 cms



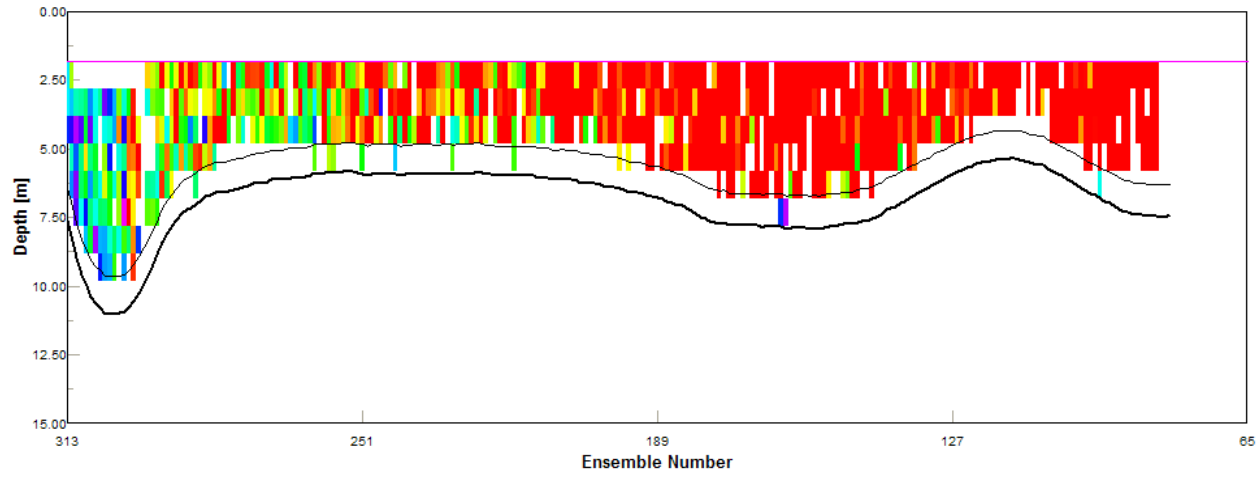
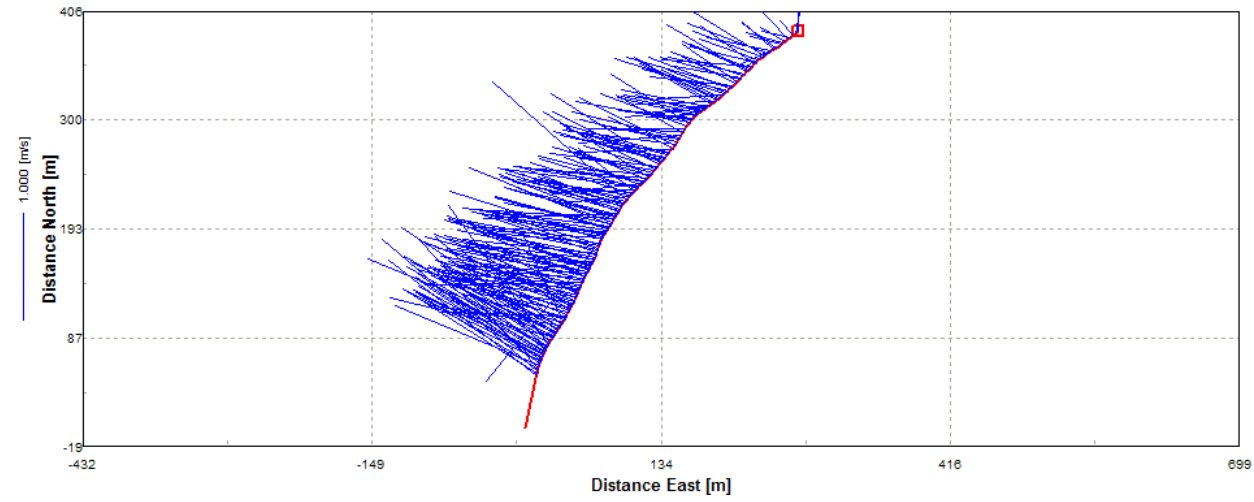
T7 – Totten  
(September 26, 2007 2:43 p.m.)  
Flood = 7,404 cms



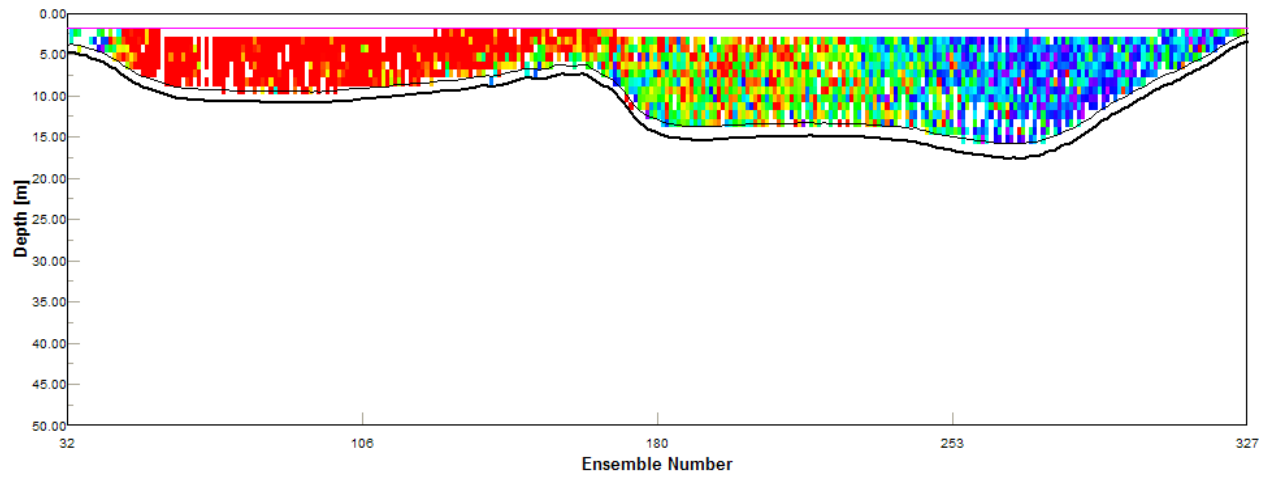
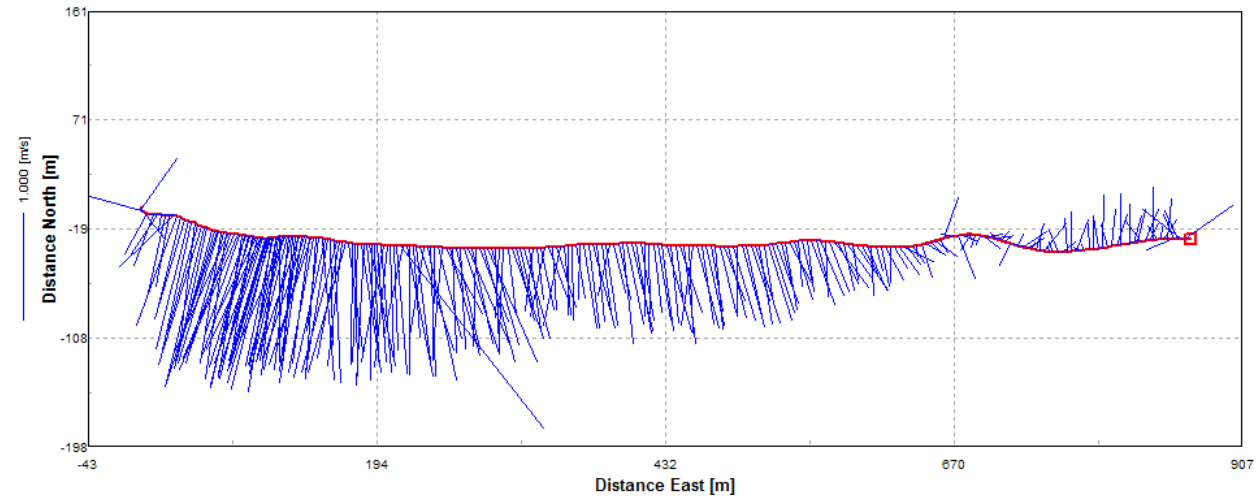
T6 – Potlatch Pt. (S. of Hope Island)  
(September 26, 2007 3:06 p.m.)  
Flood = 2,572 cms



T5 – Hammersley Inlet  
(September 26, 2007 3:28 p.m.)  
Flood = 3,085 cms

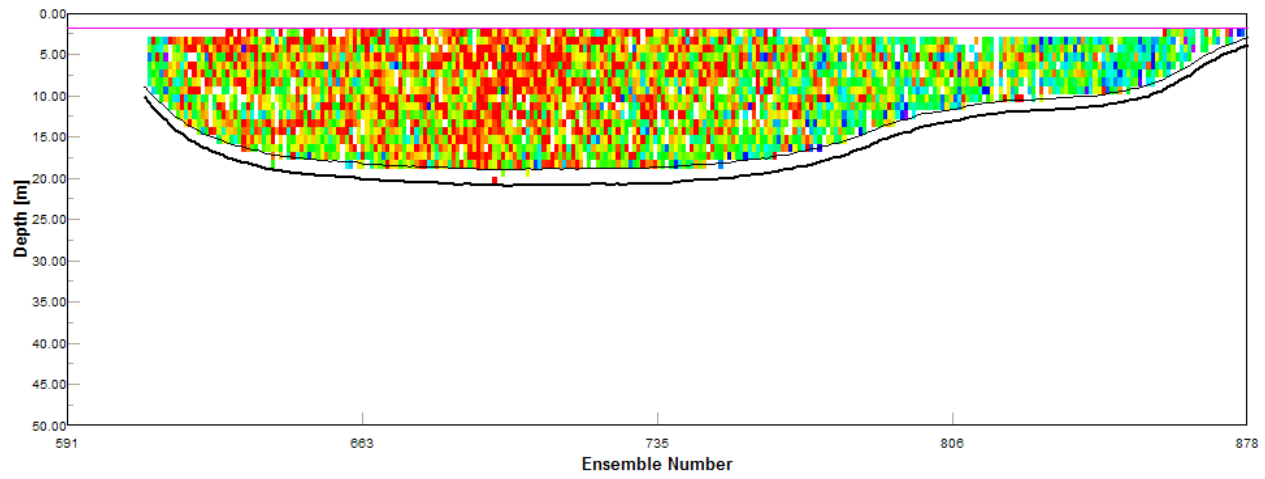
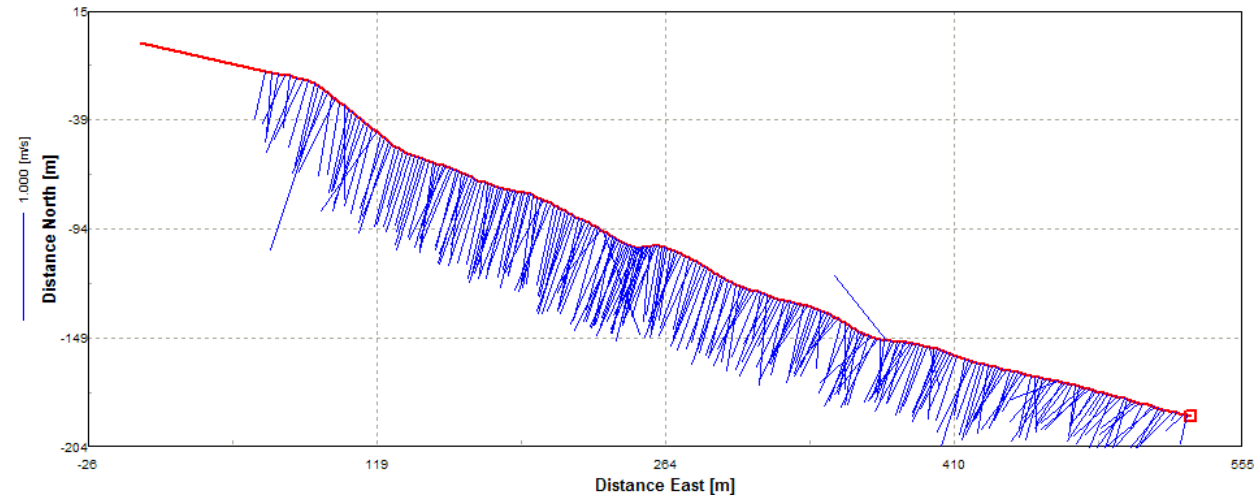


T4 – Hungerford Pt. (N. of Hope Island)  
(September 26, 2007 3:44 p.m.)  
Flood = 5,458 cms

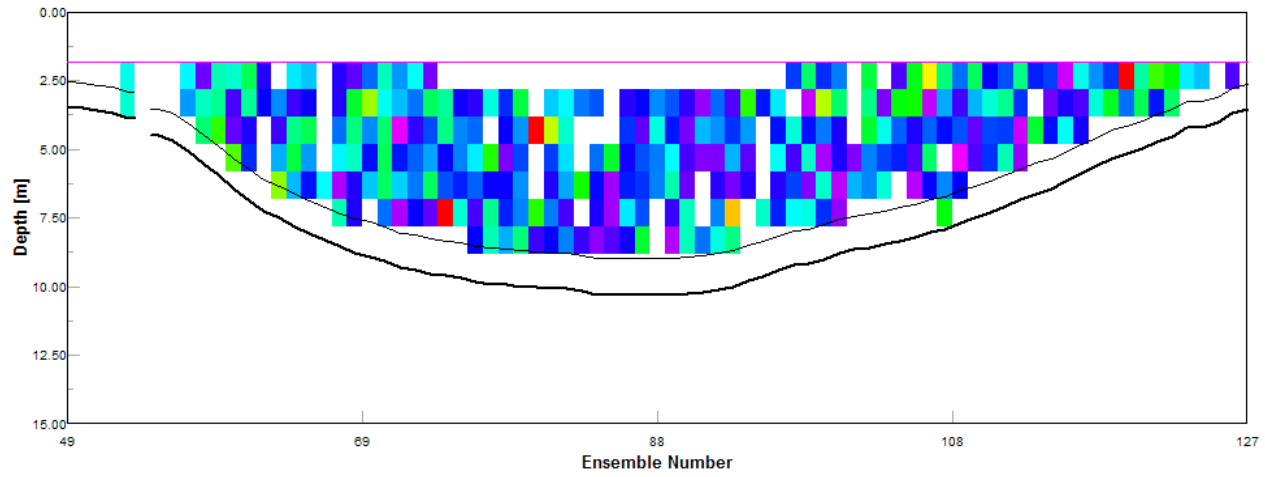
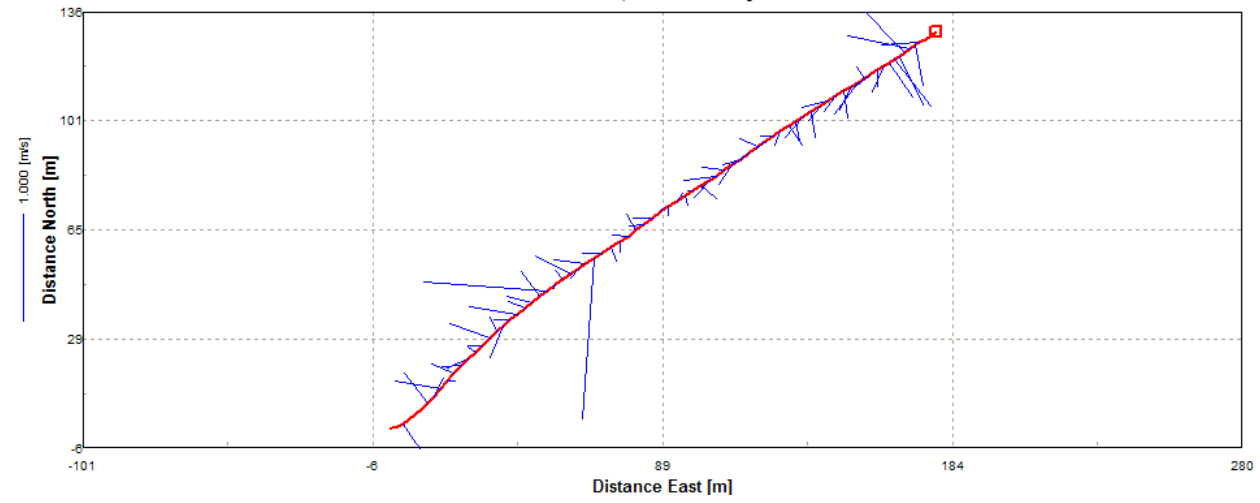




T2 – North Squaxin Pickering  
(September 26, 2007 4:06 p.m.)  
Flood = 5,799 cms



T3 – North Squaxin Peale  
(September 26, 2007 4:21 p.m.)  
Ebb = 43 cms



T1 – Harstine bridge  
(September 26, 2007 4:34 p.m.)  
Flood = 5,514 cms

