

Four Corners Auto Wrecking Site to be removed from the Hazardous Site List

The Washington State Department of Ecology (Ecology) proposes to remove Four Corners Auto Wrecking Site from the state's Hazardous Sites List. Four Corners Auto Wrecking is located at 26615 Maple Valley-Black Diamond Highway Southeast, in Maple Valley, Washington.

Four Corners Auto Wrecking Site was cleaned up under the Voluntary Cleanup Program (VCP). Under the VCP, property owners can clean up their own property to meet the requirements of the Model Toxics Control Act (MTCA) with technical assistance from Ecology.

Ecology Wants Your Input

Ecology has determined that the cleanup work at Four Corners Auto Wrecking Site meets the requirements of the Model Toxics Control Act and therefore does not pose a threat to human health or the environment. Ecology proposes to remove the site from the Hazardous Sites list and seeks your input.

You are invited to:

Review the No Further Action Letter. Send your comments in writing to Ecology for consideration. Comments may be sent by mail or e-mail, with "**Four Corners Auto Wrecking**" in the subject line. **Comments will be accepted through August 31, 2009.**

Comments Accepted

July 31, 2009 – August 31, 2009

Submit Comments and Technical Questions to:

Dale Myers - Site Manager
Washington State Department of Ecology
Northwest Regional Office - Toxics Cleanup Program
3190 160th Avenue SE
Bellevue, WA 98008
Phone: (425) 649-4446
E-mail: damy461@ecy.wa.gov

Document review locations

Washington State Department of Ecology
Northwest Regional Office
3190 160th Ave SE
Bellevue, WA 98008

Call for an appointment: Sally Perkins
Phone: (425) 649-7190
Fax: (425) 649-4450
E-mail: sper461@ecy.wa.gov
Hours: Tuesday – Thursday
8:00 AM – 12:00 PM and 1:00 PM – 4:30 PM

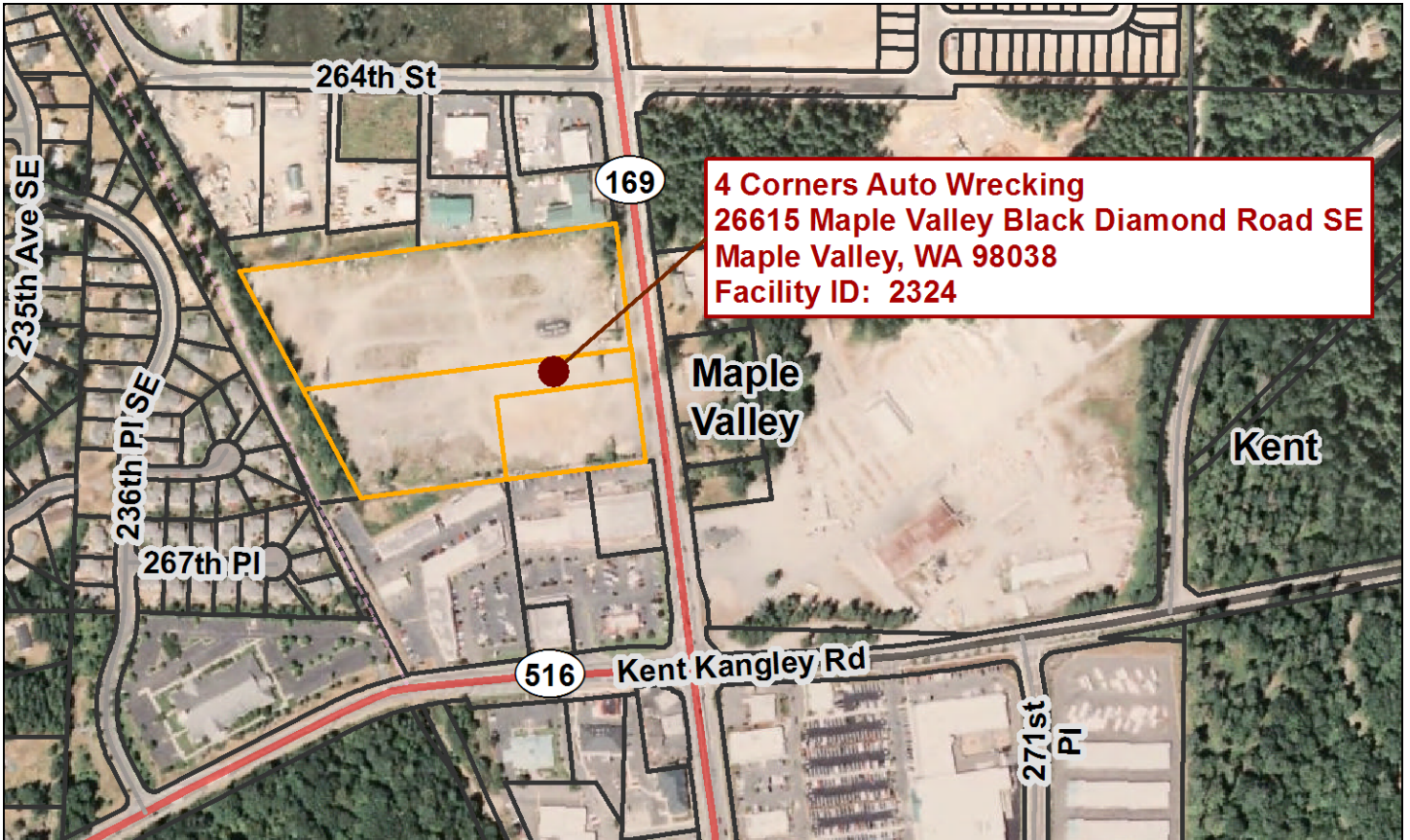
Ecology's Toxics Cleanup Website

<http://www.ecy.wa.gov/programs/tcp/sites/fourCorners/autoWrecking.htm>

Facility Site ID #: 2324

Four Corners Auto Wrecking Site

4 Corner Auto Wrecking Site Map



Site Background

This site is located in a commercial and industrial district of Maple Valley in King County. It includes a wrecking yard and warehouse where vehicle salvage operations were carried out from roughly 1970-2005. Kite Realty Group intends to redevelop the site for both commercial and retail use.

Ecology added the property to the Hazardous Site Listing in 1996 based on prior community concerns. This led to the discovery of waste locations and potentially hazardous substances in the soil. The site was given a WARM ranking (Washington Ranking Method) of "2" and placed on the Washington State Hazardous Sites List. This ranking is based on a scale of 1 to 5 where "1" represents the highest relative risk, and "5" represents the lowest relative risk. This ranking is designed to estimate the potential threat to human health and the environment, relative to all other sites in Washington State.

Additional sampling done in 2004 again uncovered soil contamination at the site.

Chemicals of Primary Concern (COPC) detected in soil and groundwater above state cleanup levels were lead, cadmium, polychlorinated biphenyls or PCBs, and oil-range petroleum hydrocarbons.

What Was Done to Clean Up The Site?

EFI Inc. (EFI) completed additional characterization in May 2006 and conducted an independent remedial action in June 2006 on behalf of Kite Realty Group. The remedial action excavated and safely disposed of contaminated soils that were above state (MTCA) cleanup levels. A total of 4,040 tons of impacted soils were excavated and disposed of off-site. Confirmatory

soil samples were taken to assure that the independent remedial action was effective and met MTCA regulatory requirements.

Groundwater monitoring began in June 2006 for oil range petroleum hydrocarbons that exceeded Model Toxics Control Act (MTCA) standards. One year of groundwater sampling showed petroleum hydrocarbon levels to be below state groundwater cleanup standards. The last groundwater monitoring results were submitted on January 2008.

What Happens Next?

After the 30-day public comment period, Ecology will review all comments received and make recommendations for any suggested changes to de-listing the site from the Hazardous Sites List. If no significant changes are necessary, the site will be de-listed.

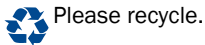
A public meeting has not been scheduled at this time. However, one will be held if ten or more people request a meeting during the comment period. Please contact Nancy Lui to request a meeting at nlui461@ecy.wa.gov or at (425) 649-7117.





PRSRT STD
US POSTAGE PAID
WA STATE DEPT
OF PRINTING 98501

**3190 160th Ave SE
Bellevue, WA 98008**



Please recycle.

**Four Corners Auto Wrecking Site
King County, WA**

Ecology Seeks Public Comment on de-listing the site from the Hazardous Site List

**Public Comment Period
July 31, 2009- August 31, 2009**

Facility Site ID #: 2324

If you need this publication in an alternative format, call Nancy Lui at (425) 649-7117.
Persons with hearing loss, call 711 for Washington Relay Service.
Persons with speech disability call 877-833-6341.
