

## Update on Cleanup Progress

From 1964-1993, Pacific Wood Treating (PWT) operated on the Port of Ridgefield (port) waterfront property at 111 West Division in Ridgefield. PWT pressure treated wood products with a variety of toxic chemicals. In 1993, PWT declared bankruptcy. Contamination related to PWT has been found in soil and groundwater on and off the port property.

In 1996 and 2001, the Department of Ecology (Ecology) and the port entered into agreed orders (legal agreements) to investigate and clean up contamination from the former plant. Ecology and the port are funding the investigation and cleanup. The port has done several interim actions (partial cleanups) on port property and is working on others. This update provides information on:

- The cleanup on port property.
- Carty Lake and Lake River sediment investigations.
- Off-property soil investigations.
- What happens next.

### Cleanup on Port Property

The site was contaminated with wood treatment solutions containing creosote and pentachlorophenol (PCP), copper, chromium and arsenic.

**Steam Injection Treatment/Cleanup:** From 2004-2011, the port's steam injection treatment system removed 24,800 gallons of liquid contamination, 1,545,000 pounds of contaminated sludge, and removed contamination from over 144 million gallons of groundwater.

The system has served its purpose and the port stopped operating it June 30, 2011. It is being cleaned and decommissioned.

**Removing Structures:** In early 2012, the port will remove buildings in Cell 2. The remaining stormwater collection system will be replaced. The port already removed other buildings, concrete pads, a rail spur, and chemical storage tanks from PWT operations.

**Removing and Capping Soil:** In early 2012, the port will remove highly-contaminated soil from areas in Cell 2. To prevent contact with any remaining contamination, the port will cover Cell 2 with a clean soil cap. The port has already removed 263 cubic yards of contaminated soil and capped Cells 3 and 4.

The port is cleaning up contamination to levels that will allow the property to be used for commercial development. See Ecology's website for information about past cleanup actions.

### For More Information

#### Site Cleanup:

Craig Rankine, Site Manager  
WA Department of Ecology  
Vancouver Field Office  
2108 Grand Blvd.  
Vancouver, WA 98661  
Phone: (360) 690-4795  
E-mail: [Craig.Rankine@ecy.wa.gov](mailto:Craig.Rankine@ecy.wa.gov)

#### Public Involvement:

Diana Smith  
Phone: (360) 407-6255  
E-mail: [Diana.Smith@ecy.wa.gov](mailto:Diana.Smith@ecy.wa.gov)

#### Health-Related Questions:

Len O'Garro  
WA State Department of Health  
Phone: (360) 236-3376  
E-mail: [Lenford.O'Garro@doh.wa.gov](mailto:Lenford.O'Garro@doh.wa.gov)

### DOCUMENT REVIEW LOCATIONS

**Ridgefield Library**  
210 N. Main Avenue  
Ridgefield, WA 98642  
(360) 887-8281

**WA Department of Ecology  
Southwest Regional Office**  
300 Desmond Drive SE  
Lacey, WA 98503  
By appointment only:  
Contact Debbie Nelson,  
[Debbie.Nelson@ecy.wa.gov](mailto:Debbie.Nelson@ecy.wa.gov) or  
(360) 407-6365

**Ecology's Toxics Cleanup Website**  
<https://fortress.wa.gov/ecy/gsp/Sitepage.aspx?csid=3020>

Facility Site ID #: 1019

### Off-Property Soil Investigation

From 2009-2011, the port investigated the extent of soil contamination from wood treating compounds. They collected 23 surface soil samples north, east, and south of port-owned property (off-property). Samples were collected on public property in residential areas (see map on page 3).

Dioxin was the only contaminant found above cleanup levels (see website for more information):

- Off-property soil dioxin concentrations ranged from 0.49 – 55.5 parts per trillion (ppt).
- Dioxins were above 11.1 ppt, the state cleanup level for unrestricted land use, in 8 of the 23 samples.

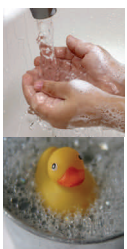
When looking at the results, keep in mind that:

- Dioxins are unintentional byproducts of human activities and natural processes. They do not break down easily in the environment and, as a result, are found everywhere.
- A single sample cannot be used to say whether a property is contaminated or not. Dioxin levels vary widely, even within a single property.
- Sampling was done to find the extent of contamination, not to determine final cleanup areas.

None of the results are high enough to cause Ecology to take immediate action. Ecology and the port are working on determining next steps.

### Healthy Actions

If you or members of your household are concerned, you can reduce exposure to soil potentially contaminated with dioxin by:



- Washing your hands after working or playing outside, and before eating.
- Scrubbing food from the garden.
- Vacuuming regularly and dusting with a damp cloth.
- Keeping children's toys clean.

Also, airborne dioxins tend to stay in the upper layer of soil until they are disturbed. Landscaping and development can dilute these dioxins. Grass and other ground cover can help prevent human exposure.

### Carty Lake & Lake River Investigation

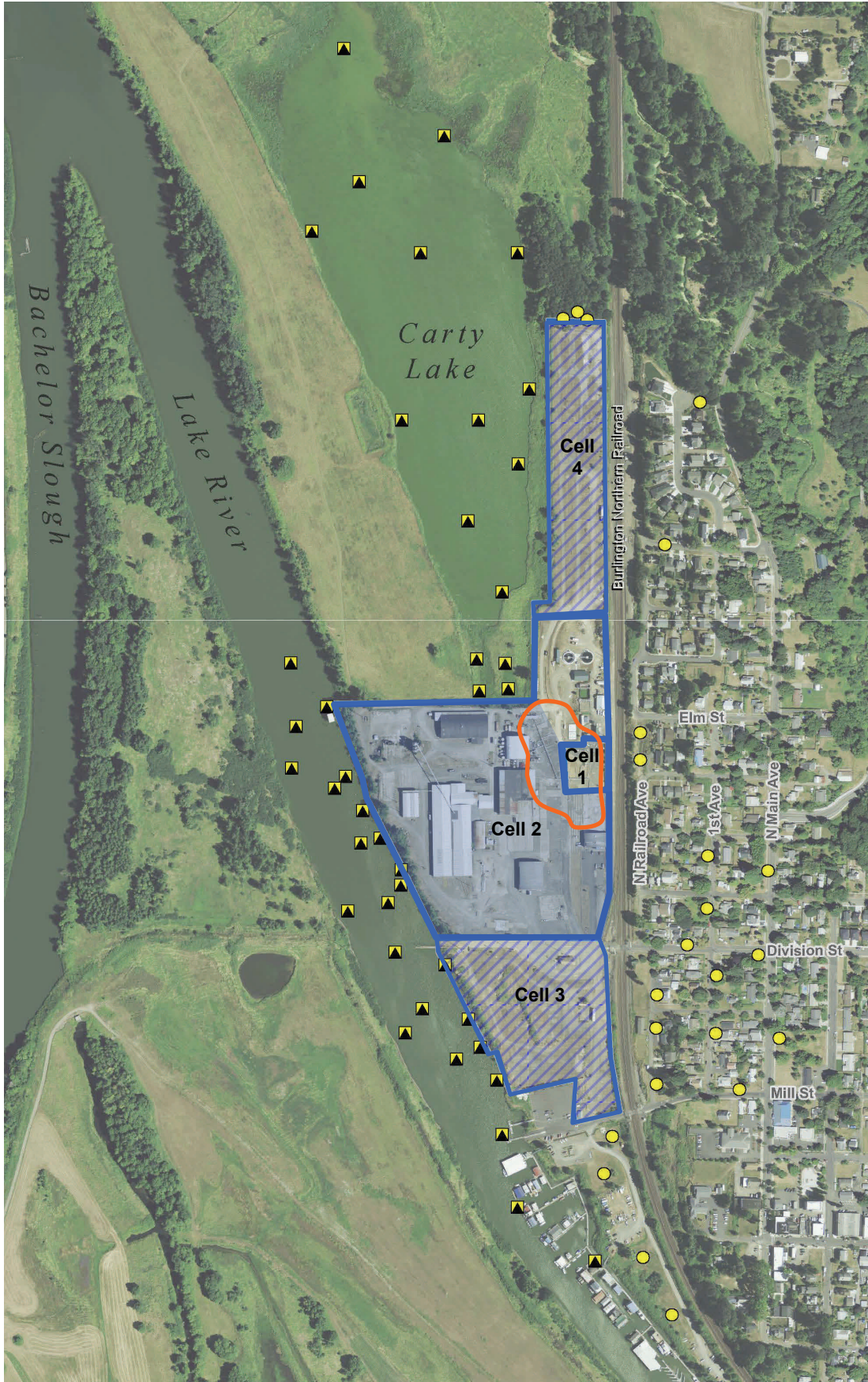
In the past, stormwater carried contamination off port property and into Carty Lake and Lake River. In 2011, Ecology and the port investigated Lake River and Carty Lake sediments for wood treating-related compounds (see map on page 3). The main contaminants found above screening levels were PCP and dioxins and furans (dioxins). Screening levels are used to identify areas where more study is needed.

Ecology and the port are evaluating cleanup options for Lake River and are working with Ridgefield National Wildlife Refuge (RNWR) on identifying next steps for Carty Lake investigation and cleanup.







### What Happens Next?

- **Steam Injection System:** The port will finish closing the system in early 2012.
- **Lake River:** In early 2012, Ecology and the port will evaluate sediment cleanup levels and options.
- **Carty Lake:** During 2012, Ecology, the port, and RNWR will assess potential effects of contamination on wildlife. Ecology, the port, and RNWR will then identify potential cleanup options.
- **Off-Property Soil:** Ecology and the port will evaluate proposed cleanup levels and actions for dioxins in off-property soil.
- **Remedial Investigation/Feasibility Study report:** The port will summarize the site investigations and assess cleanup options and costs.
- **Public Involvement:** Ecology will hold a public comment period on proposed cleanup plans, once they are developed.
- **Open House:** Ecology will hold an open house in February (see back cover).

**Pacific Wood Treating  
Cleanup and  
Investigation**



**Legend**


- Main port property (cells 1-4) 
- Soil covers 
- Buildings to be demolished 
- Steam injection treatment area 
- Sediment sample locations 
- Soil sample locations 



DEPARTMENT OF  
**ECOLOGY**  
State of Washington

PO Box 47775

Olympia, WA 98504-7775

 Please recycle.

---

## **Pacific Wood Treating Ridgefield, WA**

### **Update on Cleanup Progress**

Facility Site ID #: 1019

If you need this publication in a format for the visually impaired, call reception at (360) 407-6300.

Persons with hearing loss, call 711 for Washington Relay Service. Persons with a speech disability call 877-833-6341

### **Ecology Invites You to an Open House!**

**Where:** Ridgefield Community Center  
210 North Main Avenue, Ridgefield

**When:** February 16, 2012  
5:00 – 7:00 pm

**What:** Ecology staff members will be available for one-on-one discussions and to answer your questions. Light refreshments will be provided.