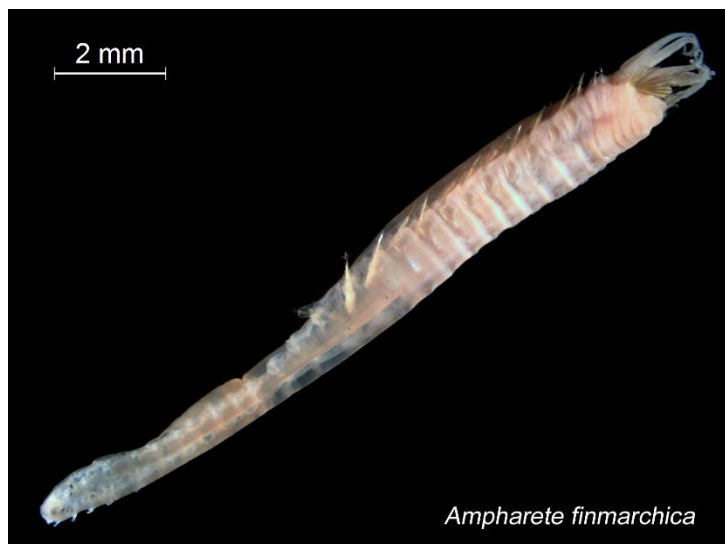


Ampharete finmarchica (Sars, 1865)

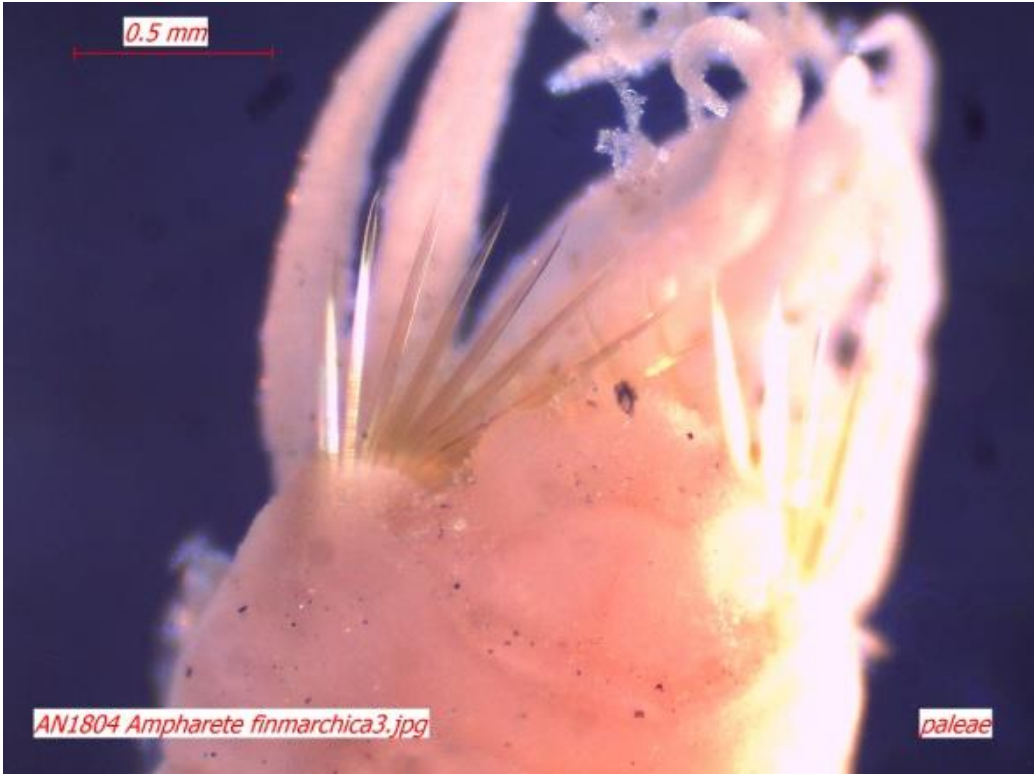

Nomenclature	
Phylum	Annelida
Class	Polychaeta
Order	
Family	Ampharetidae
Authority	(Sars, 1865)
Original Description	Sars, M. 1865 [p. 6 (as <i>Amphicteis</i> <i>finmarchica</i>)]
Common Synonyms (S) Previous Names (PN)	<i>Ampharete</i> <i>arctica</i> (S)





Distribution	
Type Locality	Ramfjord. Troms, Norway
Geographic Distribution	
Habitat	Subtidal; depth 7 to 165 m

Description
<p>Prostomium trilobed, with a pair of simple eyespots (often faded) at the corners of the wider median lobe.</p> <p>Four pairs of tapering, smooth cylindrical branchiae on a basal epidermal fold arranged with three pairs in a transverse line and the fourth pair slightly behind; middorsal gap narrow</p> <p>Segment three with 9-16 long stout paleae tapering abruptly to short points. Segment four dorsally with a pair of small nephridial papillae.</p> <p>Thorax with 14 notopodia and 12 uncinigerous segments. Abdomen with anterior notopodial rudiments, and 13 neuropodial pinnules with short superior cirri.</p> <p>Pygidium with a pair of long lateral cirri, each with a basal eyespot, and a circlet of low rounded papillae.</p>

Ampharete finmarchica

Diagnostic Characteristics	
Diagnostic Characteristics	Photo Credits: Marine Sediment Monitoring Team
Paleae stout and abruptly tapering to short tips	
Branchial groups separated by a narrow middorsal gap	

Ampharete finmarchica

<p>Thirteen abdominal neuropodial pinnules having short superior cirri</p>	
<p>Notopodial rudiments present in the anterior abdomen</p>	 <p><i>AN557 Ampharete finmarchica3.jpg</i></p>

Ampharete finmarchica



Related Species and Characteristic Differences

Species Name	Diagnostic Characteristics
<i>Ampharete</i> cf. <i>crassiseta</i>	Lacks abdominal notopodial rudiments; twelve abdominal setigers; neuropodial superior cirri begin on the third abdominal setiger; pygidial lateral cirri subequal with the cirlet of long cirriform papillae and lacking basal eyespots.
<i>Ampharete labrops</i>	Paleae tapering to long, fine tips; ventral margin of the upper lip with numerous black eyespots

Comments

This species is often listed in the older literature as *Ampharete arctica* Malmgren, 1866, but Sars' description takes precedence.

Literature

- Böggemann, M. 1997. Polychaeten aus der Deutschen Bucht. Cour. Forsch.-Inst. Senckenberg 202: 1-315. [p. 179]
- Hartmann-Schröder, G. 1996. Annelida, Borstenwürmer, Polychaeta. Die Tierwelt Deutschlands 58: 1-648. [p. 493]
- Hilbig, B. 2000. Chapter 8. Family Ampharetidae Malmgren, 1867. Pages 169-230. IN: Blake, J. A.; B. Hilbig; and P. H. Valentich-Scott (editors). Taxonomic Atlas of the Benthic Fauna of the Santa

Ampharete finmarchica

Maria Basin and Western Santa Barbara Channel. Volume 7 - The Annelida Part 4. Polychaeta: Flabelligeridae to Sternaspidae. Santa Barbara Museum of Natural History. Santa Barbara, California. ISBN-13: 978-0936494128. [p. 182]

Holthe, T. 1986. Polychaeta Terebellomorpha. Mar. Inverts. Scand. 7: 1-194. [p. 38]

Jirkov, I.A. 2001. Polychaeta of the Arctic Ocean. Moscow, Yanus-K. 632 pp. [p. 465]

Sars, M. 1865. Forsatte Bidrag til Kundskaben om Norges Anneliden. Forh. Vidensk. Selsk. Christiania, pp. 5-20. [p. 6 (as *Amphicteis finmarchica*)]

More Information

More information about Puget Sound benthic invertebrates is available at:
<http://www.ecy.wa.gov/programs/eap/psamp/index.htm>

Prepared by R. Eugene Ruff (Ruff Systematics) and Kathy Welch (Department of Ecology) on 6/28/13. This document is available on the Department of Ecology's website at <https://fortress.wa.gov/ecy/publications/SummaryPages/1403204.html>.

If you need this document in a format for the visually impaired, call (360) 407-6764. Persons with hearing loss can call 711 for Washington Relay Service. Persons with a speech disability can call (877) 833-6341.