

## Update on 2014 - 2015 Cleanup Work

The Port of Ridgefield (port) will do cleanup work at the Pacific Wood Treating site from June 2014 - early spring 2015. The maps on page 3 show where and when work will occur, and areas that will be closed to public access. This update provides information on:

- Railroad overpass.
- Carty Lake.
- Lake River.
- What happens next.

### Site Background

From 1964-1993, Pacific Wood Treating (PWT) operated on port property at 111 West Division St in Ridgefield. PWT pressure treated wood products with a variety of toxic chemicals. In 1993, PWT declared bankruptcy. Contamination from PWT has been found in soil, groundwater, and sediments.

From 1996 - 2013, the port cleaned up contamination on port property. The port removed:

- 24,800 gallons of liquid contamination.
- 1,545,000 pounds of contaminated sludge.
- Contamination from over 144 million gallons of groundwater.

The port also capped the property using two or more feet of clean soil.

In 2013, the Department of Ecology (Ecology) and the port entered into a legal agreement for the port to clean up other areas with PWT contamination. Ecology and the port are funding the cleanup.

### Railroad Overpass Construction Prep and Cleanup

In June, the port will begin Phase II of building a new railroad overpass connecting downtown Ridgefield and the port property (see map on page 3 or the port's website at [www.portridgefield.org/Current-projects/pioneer-stree-rail-overpass](http://www.portridgefield.org/Current-projects/pioneer-stree-rail-overpass)). Soil in the overpass construction area is contaminated with dioxins from PWT. Phase II includes:

- Collecting contaminated soils from the overpass area and placing them in the project right-of-way. A geo-textile liner and two feet of clean soil will be placed over the contaminated soil and Pioneer Street will be built over the enclosed contaminated soil.
- Constructing an overpass approach road between Division and Mill Streets. In the future, this road will connect to the railroad overpass and the port property.
- Relocating and upgrading a sewer pump station serving the waterfront.

### For More Information

#### Site Cleanup

Craig Rankine, Site Manager  
WA Department of Ecology  
Vancouver Field Office  
2108 Grand Blvd.  
Vancouver, WA 98661  
(360) 690-4795  
[Craig.Rankine@ecy.wa.gov](mailto:Craig.Rankine@ecy.wa.gov)

#### Carty Lake and Lake River Dredging

Joyce Mercuri  
Sediment Specialist  
(360) 407-6260  
[Joyce.Mercuri@ecy.wa.gov](mailto:Joyce.Mercuri@ecy.wa.gov)

#### Public Involvement

Diana Smith  
(360) 407-6255  
[Diana.Smith@ecy.wa.gov](mailto:Diana.Smith@ecy.wa.gov)

### DOCUMENT REVIEW LOCATION

**WA Department of Ecology  
Southwest Regional Office**  
300 Desmond Drive SE  
Lacey, WA 98503  
By appointment only:  
Contact Susie Baxter  
[Susan.Baxter@ecy.wa.gov](mailto:Susan.Baxter@ecy.wa.gov) or  
(360) 407-6365

#### Ecology's Cleanup Website

<https://fortress.wa.gov/ecy/gsp/Sitepage.aspx?csid=3020>

Facility Site ID #: 1019

### Carty Lake Cleanup

In the past, stormwater carried PWT contamination into Carty Lake in the Ridgefield National Wildlife Refuge (RNWR). Sediments in Carty Lake, especially in the south end, are contaminated with pentachlorophenol (PCP), dioxins, and toxic metals.

From late July - October, the port will clean up Carty Lake by (see maps on page 3):

- Building a small, temporary dam across the south end of the lake to keep the work area dry.
- Excavating (digging out) contaminated sediments at the south end of the lake.
- Removing and treating water from the excavated sediments on port property, if needed.
- Trucking the sediments to a landfill.
- Placing clean sand over the excavated area. This will stabilize the lake bottom and help it recover.
- Stabilizing existing retaining walls at the lake's south end with an earth and rock embankment.
- Planting native plants in wetlands and on the new embankment.

The US Fish and Wildlife Service will restrict fishing from Carty Lake.

### What is next for off-property dioxin cleanup?

The port discovered some soil contaminated with dioxin in the neighborhood near the port property. The results are not high enough to cause Ecology to take immediate action.

On our website (see page 1), you can read more about soil sampling and results, answers to frequently asked questions, and actions you can take to reduce your exposure to soil potentially contaminated with dioxin.

More investigation is needed to define the extent of contamination in yards and what cleanup work is needed. Ecology is working to determine next steps.

### Lake River Cleanup

Stormwater also carried PWT contamination into Lake River near port property. Sediments in Lake River are contaminated with PCP, cresols, dioxins, and polycyclic aromatic hydrocarbons (PAHs).

From October 2014 - early spring 2015, the port will clean up Lake River sediments by:

- Removing pilings and debris.
- Dredging the most contaminated sediments. The port will monitor water quality during this work.
- Removing and treating water from the dredged sediments. The port will then send the sediments to a landfill by truck or barge.
- Placing clean sand over dredged areas and nearby sediments with lower contamination. This will stabilize the river bottom and help it recover.
- Stabilizing the shore with geo-textile fabric and rounded rocks. The port will plant native plants at the top of the riverbank.

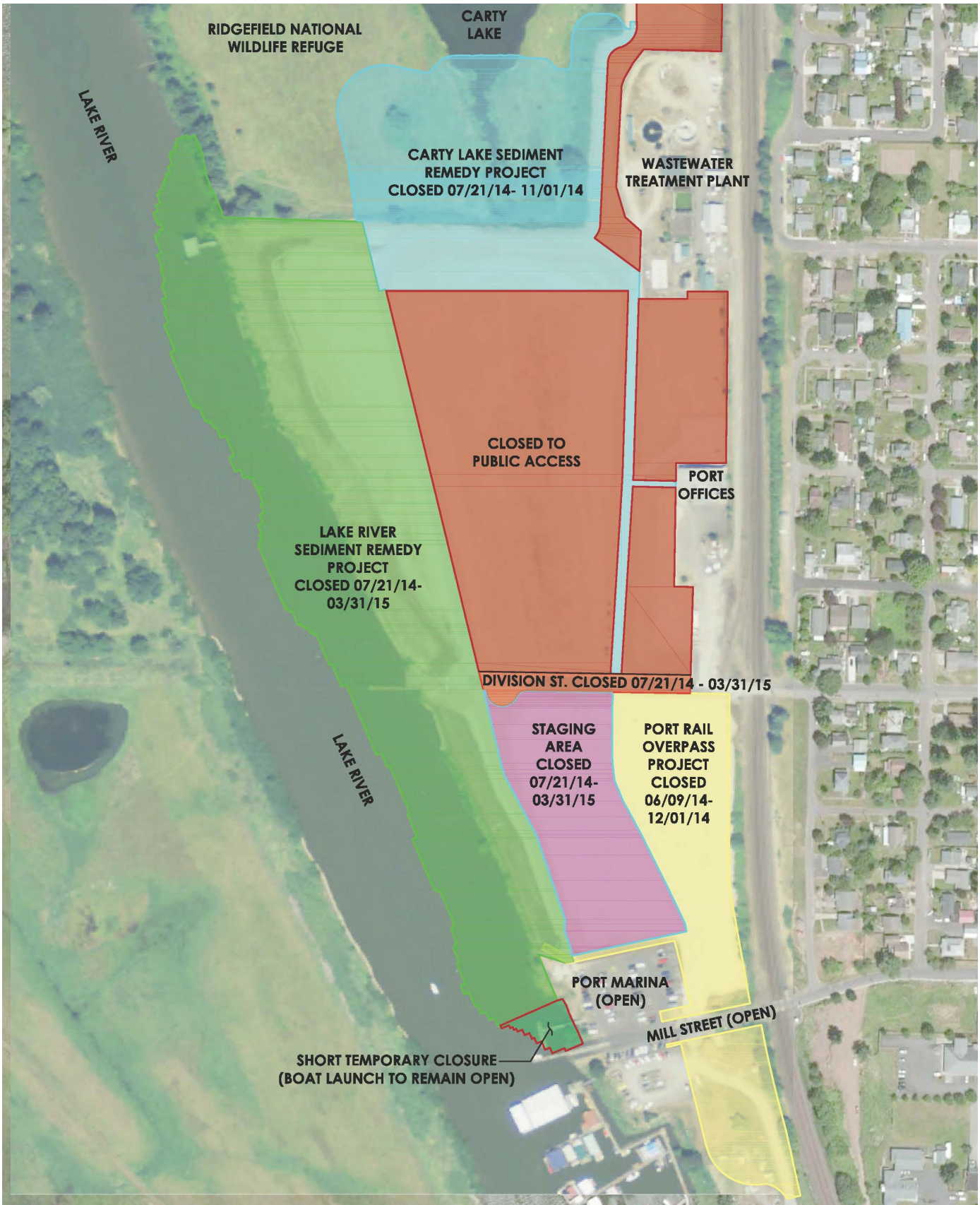
### How will this impact neighbors?

There will be work noise from 7 am - 10 pm during construction and increased truck traffic. The port will work to minimize impacts to homes and businesses.

Some areas will also be closed (see map):

- **Parts of Mill Street and Division Street** will be closed for short times beginning in June. The port will set up sign boards about temporary closures.
- **Lake River Trail** will be closed from mid-June 2014 - March 2015.
- **Division Street** west of the port entrance will be closed from late July - March 2015.
- **Division Street Dock** has been removed.
- **Marina Dock** will be closed for a few days between October and December. The port will post signs at the marina before the temporary closure.

**Cleanup Project Work and Closure Areas June 2014 - Spring 2015**






DEPARTMENT OF  
**ECOLOGY**  
State of Washington

PO Box 47775

Olympia, WA 98504-7775

 Please recycle.

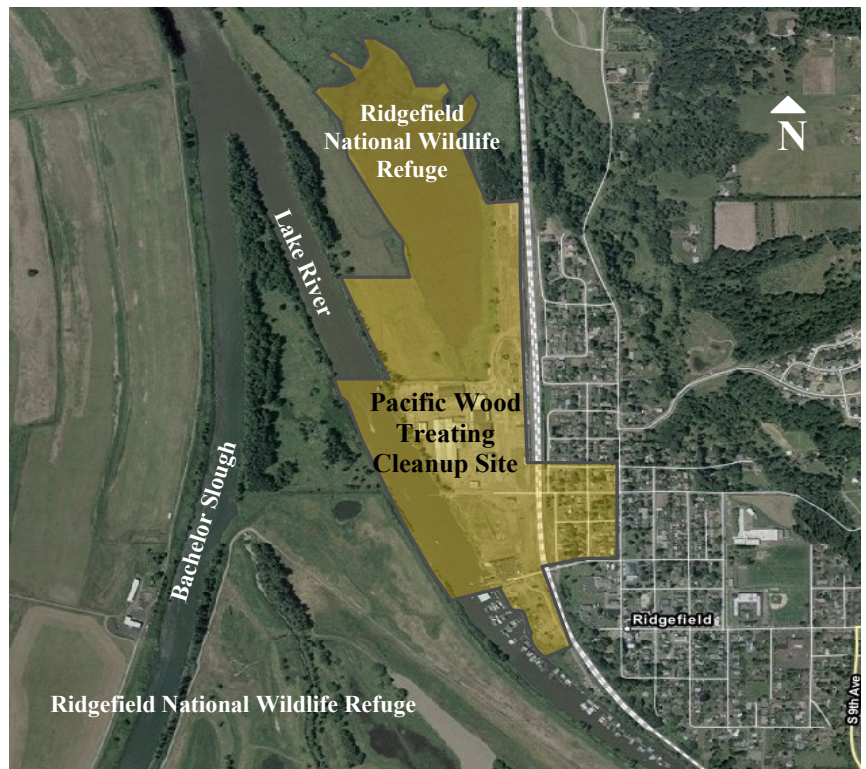
## **Pacific Wood Treating Ridgefield, WA**

### **Update on 2014 - 2015 Cleanup Work**

Facility Site ID #: 1019

If you need this publication in a format for the visually impaired, call reception at (360) 407-6300.

Persons with hearing loss, call 711 for Washington Relay Service. Persons with a speech disability call 877-833-6341



Pacific Wood Treating, 111 West Division, Ridgefield