

Yard Soil Replacement Starting in Ridgefield

CONTACTS & INFORMATION

For More Information:

Craig Rankine
Ecology Site Manager
Phone: (360)-690-4795
E-mail: craig.rankine@ecy.wa.gov

Website:

<https://fortress.wa.gov/ecy/gsp/Sitepage.aspx?csid=3020>

Public Involvement:

Stacy Galleher
Public Involvement Coordinator
Phone: (360) 407-7529
Email: Stacy.Galleher@ecy.wa.gov

Construction Questions

Lauren Wirtis—Maul Foster Alongi
Title
Phone: (360) 947-2210
Email: lwirtis@maulfoster.com

Special accommodations

To request ADA accommodation including materials in a format for the visually impaired, call Ecology at (360) 407-6300.

Persons with impaired hearing may call Washington Relay Service at 711. Persons with speech disability may call TTY at (877)-833-6341.

Facility Site ID #: 1019
Cleanup Site ID #: 3020

This summer, the Department of Ecology (Ecology) and the Port of Ridgefield (port) are removing contaminated soil in 17 residential yards and some right-of-way areas in the neighborhood east of the port property (off-property area, see map) at the Pacific Wood Treating cleanup site. Additional yards with contaminated soil may be cleaned up as time allows this summer. Remaining yards in the off-property area will be cleaned up in 2017.

Construction will run from July to October 2016

Work hours are from 8:00 a.m. to 6:00 p.m., Monday through Friday and possibly some weekends. The work will be completed in groups, with two teams working on three yards at a time (see map for schedule). Construction on an individual yard can take up to three weeks to complete. However, there may be unexpected delays and we may not complete work scheduled for this year. Please expect additional construction related traffic in the neighborhood.

What to expect during and after construction:

- Fences will be removed for cleanup and replaced along property lines. This includes fences next to yards that will not be cleaned up.
- Loud construction noise during work hours.
- Restricted access to right-of-way areas.
- Possible parking and traffic disruptions in the active work area.
- Increased truck traffic in the neighborhood.

Please call Lauren Wirtis at 360-947-2210 immediately if you see:

- Dust in the air off the worksite.
- Dirt or dust being tracked from worksite.

Staff will return calls by the next business day. We will continue to notify residents and neighbors when we are ready to move construction to the next group.

What Happens Next?

- We will send another update once we have completed half of this year's work.
- We will continue to sample soil to find the extent of the off-property contamination.
- Once we find the extent we will offer soil sampling to homeowners in the affected area.
- We will keep the website updated with the latest news.



¿Habla Español? Si necesita esta información en español, contáctenos a preguntas@ecy.wa.gov.

Q: What are my responsibilities if I'm getting cleanup?

A: Before Construction:

- Allow contractors access to your yard for survey activities.
- You will be contacted approximately 5 days before construction begins at your property. You will have the opportunity for a pre-construction meeting with the contractor.
- You will need to clear your yard and right-of-way of all items including: lawn, yard, and play equipment, and vehicles.
- If you need help clearing your yard, please call Lauren Wirtis at 360-947-2210. The port will have temporary secured storage available if needed.

During Construction:

- Secure your pets.
- Please do not park next to the yard or right-of-way.
- Keep privacy window curtains closed as contractors will be in your yard.

After Construction:

The contractor will care for the new landscaping for a minimum of 30 days or until the end of September. Starting in October, you must care for and water your new lawn and plants. We will provide yard care information.

We are cleaning up yard and right-of-way during the drier summer months to avoid issues with stormwater runoff. We plan to complete cleanup work for the current off-property area in two construction seasons.

Background

From 1964-1993, Pacific Wood Treating (PWT) operated on the Port of Ridgefield (port) waterfront property. PWT pressure treated wood products with a variety of toxic chemicals. Over the past 17 years, the port cleaned up or used a soil cap to cover areas where contamination was found on port property. In this last phase, Ecology and the port are studying and cleaning up dioxins in the neighborhood east of the port property (off-property area, see map).

In 2009, the port began sampling in right-of-ways to define the extent of contamination in the off-property area. Dioxins were the only contaminant found above cleanup levels. From the right-of-way sample results it was clear that dioxins were also in yards. The yard soil sampling program started spring 2015.

All of the yards in the off-property area have been sampled. However, additional soil samples are needed east of Main and south of Mill Streets. We will start with the right-of-ways and continue sampling until the extent of contamination is found. When the extent of contamination is defined it will be documented in a series of reports that will be available for public comment.

Q: How can I keep my family safe from possible contamination?

A: There are several ways you can reduce your exposure to dioxins and other types of soil contamination. These actions include:

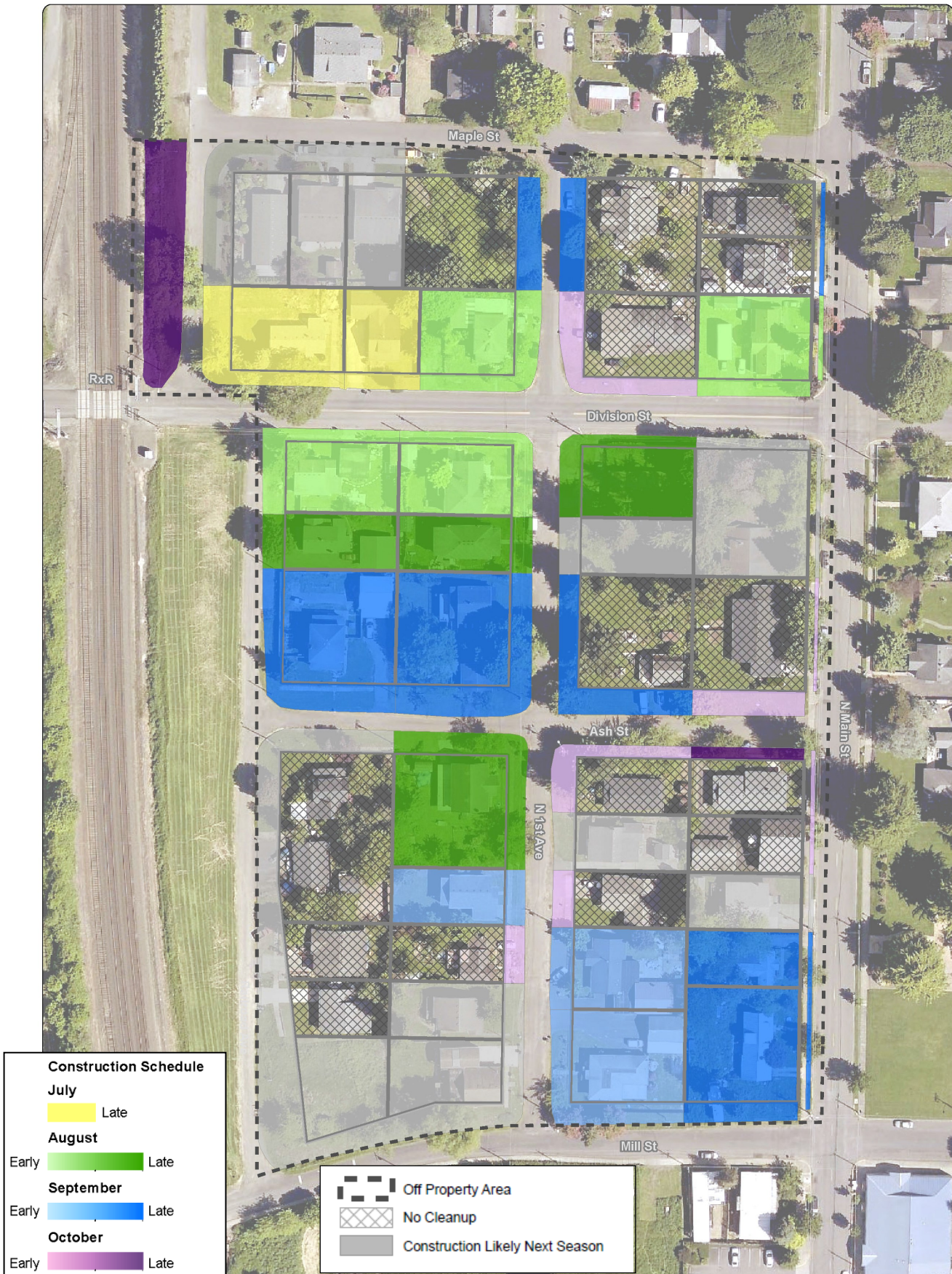
- Washing hands before eating, and after playing or working outside.
- Removing your shoes before going inside.
- Preventing children from eating dirt.
- Washing children's toys and pacifiers often.
- Mopping, vacuuming, and dusting with a damp cloth often.
- Brushing and bathing pets often to keep them clean.
- Washing fruits and vegetables before eating them.

Q: How long will this year's yard restoration take?

A: Yard cleanup and restoration is expected to take up to three weeks to complete per group. Contractors may need more time if there is inclement weather or holidays. Construction will stop in late Fall 2016.



Map of Cleanup Construction Areas

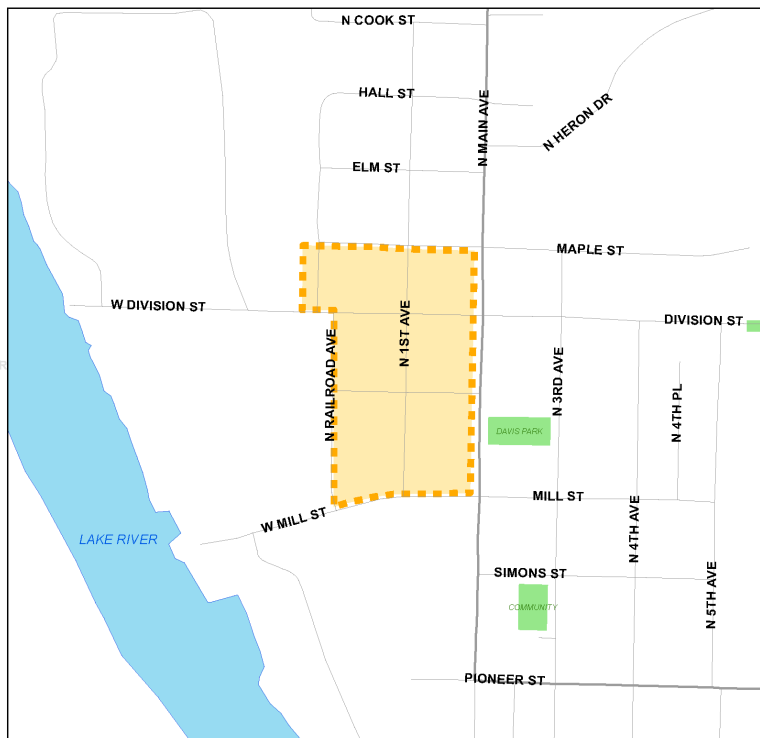


PO Box 47775

Olympia, WA 98504-7775



Cleanup Construction Begins in July 2016



Ecology and the port will be removing contaminated soil from 17 yards and some right-of-ways in the off-property area (orange area in map).

From July through October expect:

- Loud construction noise
- Restricted access to right-of-way areas
- Possible parking and traffic disruptions
- Increased truck traffic

For more information visit www.ecy.wa.gov and search for "csid 3020"

Facility Site ID #: 1026
Cleanup Site ID #: 3450

