

Neighborhood Soil Sampling Expanded

CONTACTS & INFORMATION

For More Information:

Craig Rankine
Ecology Site Manager
Phone: (360)-690-4795
E-mail: craig.rankine@ecy.wa.gov

Website:

<https://fortress.wa.gov/ecy/gsp/Sitepage.aspx?csid=3020>

Public Involvement:

Stacy Galleher
Public Involvement Coordinator
Phone: (360) 407-7529
Email: Stacy.Galleher@ecy.wa.gov

Soil Sampling Questions:

Lauren Wirtis—Maul Foster Alongi
Project Administrator
Phone: (360) 947-2210
Email: lwirtis@maulfoster.com

Special Accommodations

To request ADA accommodation including materials in a format for the visually impaired, call Ecology at (360) 407-6300.

Persons with impaired hearing may call Washington Relay Service at 711. Persons with speech disability may call TTY at (877)-833-6341.

Facility Site ID #: 1019
Cleanup Site ID #: 3020

This summer, the Department of Ecology (Ecology) and the Port of Ridgefield (port) took soil samples in the neighborhood east of the port property (the Phase 2 off-property area, east of Main Ave., see the map on page 3) at the Pacific Wood Treating cleanup site.

Second phase of sampling looks for extent of soil contamination

We took samples in the right-of-way (the area between the street and property lines) to find where contamination may exist. From this information we have determined that we would like to sample some yards (see purple lots on the page 3 map). Ecology and the port will ask homeowners in the Phase 2 area for access to sample their yard. The port will use the yard sampling data to decide if cleanup is needed. You can read more about the soil sampling process in the FAQ on our website (see the blue box on left).

There is no immediate health concern but, there is a long term risk.

Long-term, daily exposure to elevated levels of dioxins raises the risk of certain health problems. The health risk comes from accidentally swallowing, or breathing in the dust from the soil over a long period. There are several ways you can reduce your exposure to dioxins. See the list on page 2 for healthy actions we recommend.

Background

From 1964-1993, Pacific Wood Treating (PWT) pressure treated wood products with a variety of toxic chemicals on the nearby port property. Over the past 17 years, the port cleaned up areas of contamination on port property. In this last part of cleanup, we are studying and removing dioxins found in the neighborhood east of the port property (see the map on page 3).

In 2009, the port began soil sampling in the Phase 1 area. Dioxins were the only contaminant found above cleanup levels. From the right-of-way sample results it was clear that dioxins were also in some yards. The yard soil sampling program started spring 2015. We started first with the Phase 1 area because it was closest to the source of contamination. When the extent of contamination is found, it will be documented in a series of reports that will be available for public comment.

What Happens Next?

- Ecology will send a letter to homeowners in the Phase 2 area.
- The port and consultants will work with homeowners to sample yard
- Once we have results, we will notify residents of our next steps.
- We will notify residents if we would like to sample additional homes.



Q: How can I sign up for sampling?

A: If you live in the purple area on the map, the port's consultants and Ecology will contact you in the next few months by mail and in person.

If you prefer us to contact you by email or phone contact:

Lauren Wirtis
Phone: (360) 947-2210
Email: lwirtis@maulfoster.com

Q: How does soil sampling work?

A: Ecology and the port will develop a sampling plan for each yard. The plan will show sample areas and any areas that cannot be sampled.

They will take ten shallow samples and mix them together for analysis. This is called a composite sample. Most sample holes will be six inches deep and about an inch in diameter. At some yards, the samplers will also collect deeper samples from six to twelve inches below surface level. The samplers will fill in all the holes.

For more information visit www.ecy.wa.gov and search for "csid 3020"

When looking at the results, keep in mind that:

- A right-of-way sample cannot be used to say whether a property is contaminated or not. Dioxin levels can vary widely between the right-of-way and a yard.
- Dioxins are unintentional byproducts of human activities and natural processes. They do not break down easily in the environment and, as a result, are found everywhere.
- Right-of-way sampling was done to find the general extent of contamination, yard sampling is done to determine cleanup areas.

Q: How can I keep my family safe from possible contamination?

A: There are several ways you can reduce your exposure to dioxin contamination. These actions include:

- Washing hands before eating, and after playing or working outside.
- Removing your shoes before going inside.
- Preventing children from eating dirt.
- Washing children's toys and pacifiers often.
- Mopping, vacuuming, and dusting with a damp cloth often.
- Brush and bathe pets often to keep them clean.
- Washing fruits and vegetables before eating them.

Q: What happens if I have dioxins in my yard above state cleanup levels?

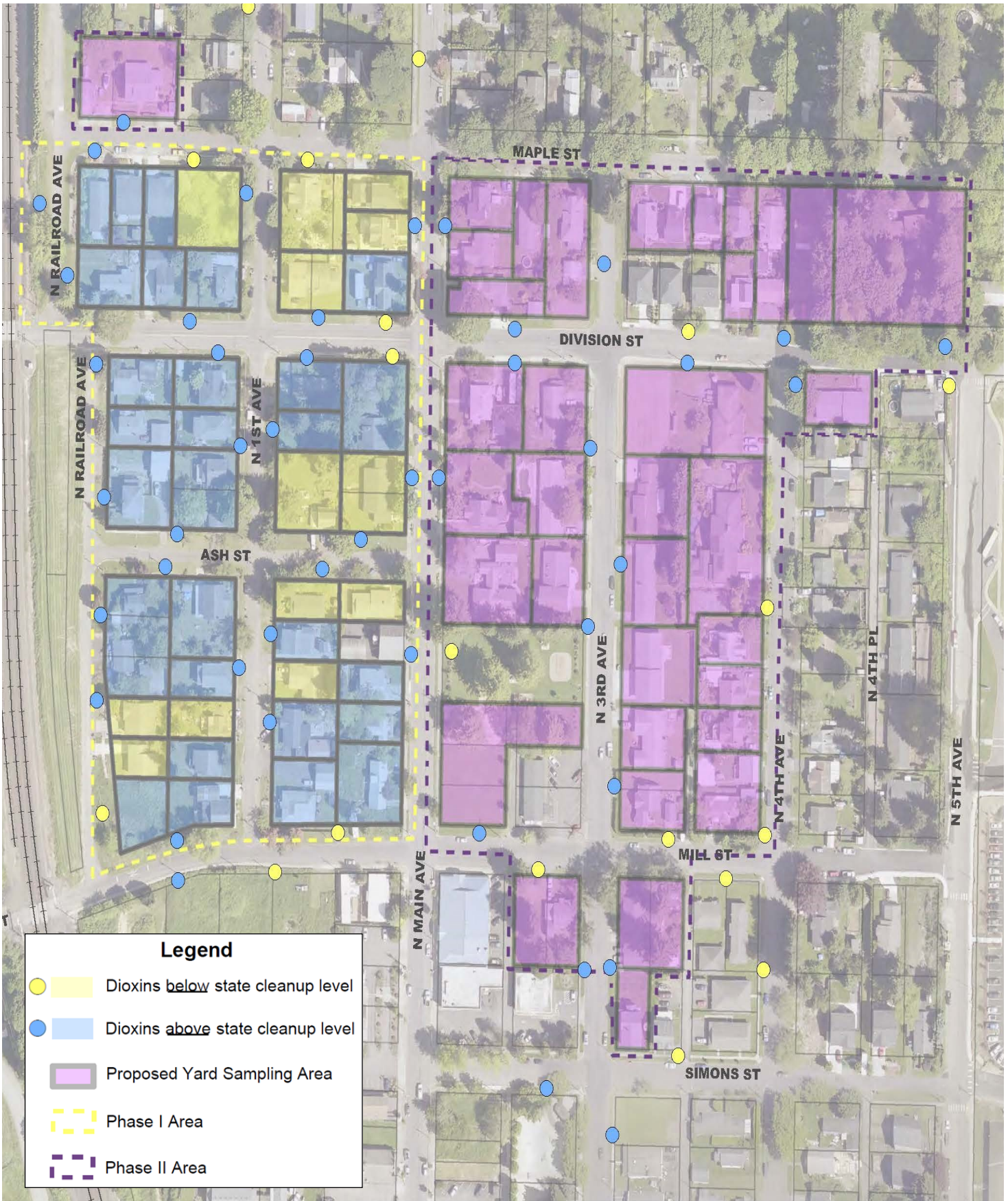
A: First, we will notify you with your yard sampling results. Then, we will work with the homeowner to develop a cleanup plan. Typically, cleanup requires soil removal and replacement.

Cleanup is complete for some yards in Phase 1

We have completed soil removal and yard replacement in 20 yards and some right-of-way areas in the Phase 1 area. We will be continuing with the cleanup for the rest of the yards in the Phase 1 area in 2017. Our goal is to have the yard soil tested in the Phase 2 area by the end of 2017.



Map of Sample Results



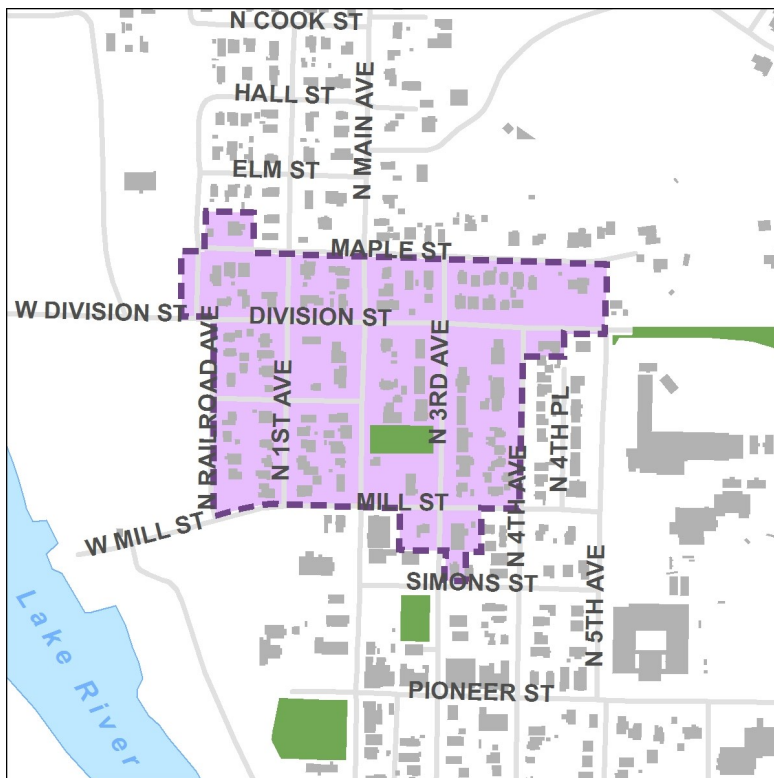
PO Box 47775

Olympia, WA 98504-7775

Save paper and join our email list!

Send an email to sgal461@ecy.wa.gov with the subject line "PWT". In the message, let us know your address.

Expanded Soil Sampling in Ridgefield Neighborhood



We have expanded our yard soil sampling to find dioxin contamination in the neighborhood east of the Pacific Wood Treating cleanup site.

For more information visit www.ecy.wa.gov and search for "csid 3020"

Facility Site ID #: 1026

Cleanup Site ID #: 3020

¿Habla Español? Si necesita esta información en español, contáctenos a preguntas@ecy.wa.gov.

