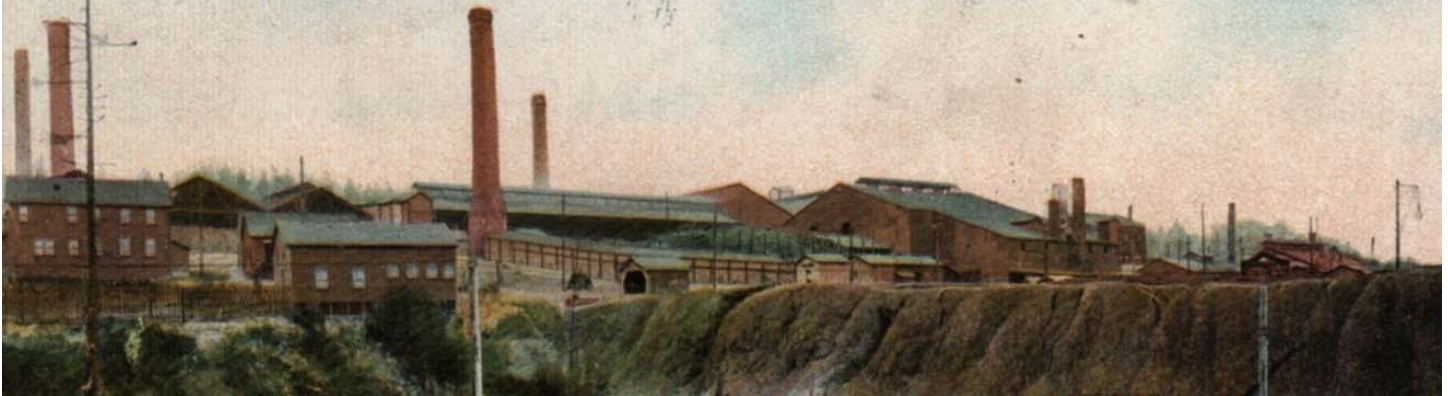


# Everett Smelter Cleanup



## Cleanup website

[www.ecy.wa.gov/programs/tcp/sites\\_brochure/asarco/es\\_main.html](http://www.ecy.wa.gov/programs/tcp/sites_brochure/asarco/es_main.html)

## Information Hotline

**(425) 446-1024**

This is a local number and will be answered 24 hours a day.

## Special accommodations

To request ADA accommodation for disabilities, or printed materials in a format for the visually impaired, call Ecology at (425) 649-7000 or visit <http://www.ecy.wa.gov/accessibility.html>.

Persons with impaired hearing may call Washington Relay Service at 711.

Persons with speech disability may call TTY at (877) 833-6341.

Cleanup Site ID #4298

Facility Site ID #2744

## Residential cleanup in Everett is more than half done!

Ecology is making progress on cleanup of contamination left behind by the Asarco smelter in northeast Everett. We have now cleaned up more than half of the properties in the cleanup area!

Properties	Status
720	Possibly contaminated
480	Sampling complete (includes cleaned-up properties)
378	Cleanup complete or not needed

## We're cleaning up 11 more properties in 2017



We have finalized plans to remove contaminated soil from 11 properties in the Delta neighborhood.

The bidding process to select a contractor for construction is underway. Construction will take place this summer and fall.

We'll replace the contaminated soil with clean soil and new landscaping. Homeowners will receive 60 days of landscape care and a 1-year warranty on their new sod and plants.

We'll post construction updates in the neighborhood as work proceeds.



## Everett Smelter Timeline

### 1893-1912: Smelter operation

### 1990: Contamination discovered

Ecology discovered arsenic, lead, cadmium and other metals in soil around northeast Everett.

### 1999-2007: Cleanup under Enforcement Order

Ecology managed cleanup of the most highly contaminated areas around the former smelter. We issued an Enforcement Order to Asarco in 2002 to pay for the cleanup.

### 2009: Asarco settlement

Ecology received a bankruptcy settlement from Asarco to continue the cleanup.

Since 2009, we've been sampling and cleaning up residential properties in the Upland Area.

We have also studied the contamination and developed a cleanup plan for the Lowlands (the industrial area next to the Snohomish River).

### 2017: Funding is limited

We have now spent most of the settlement funds.

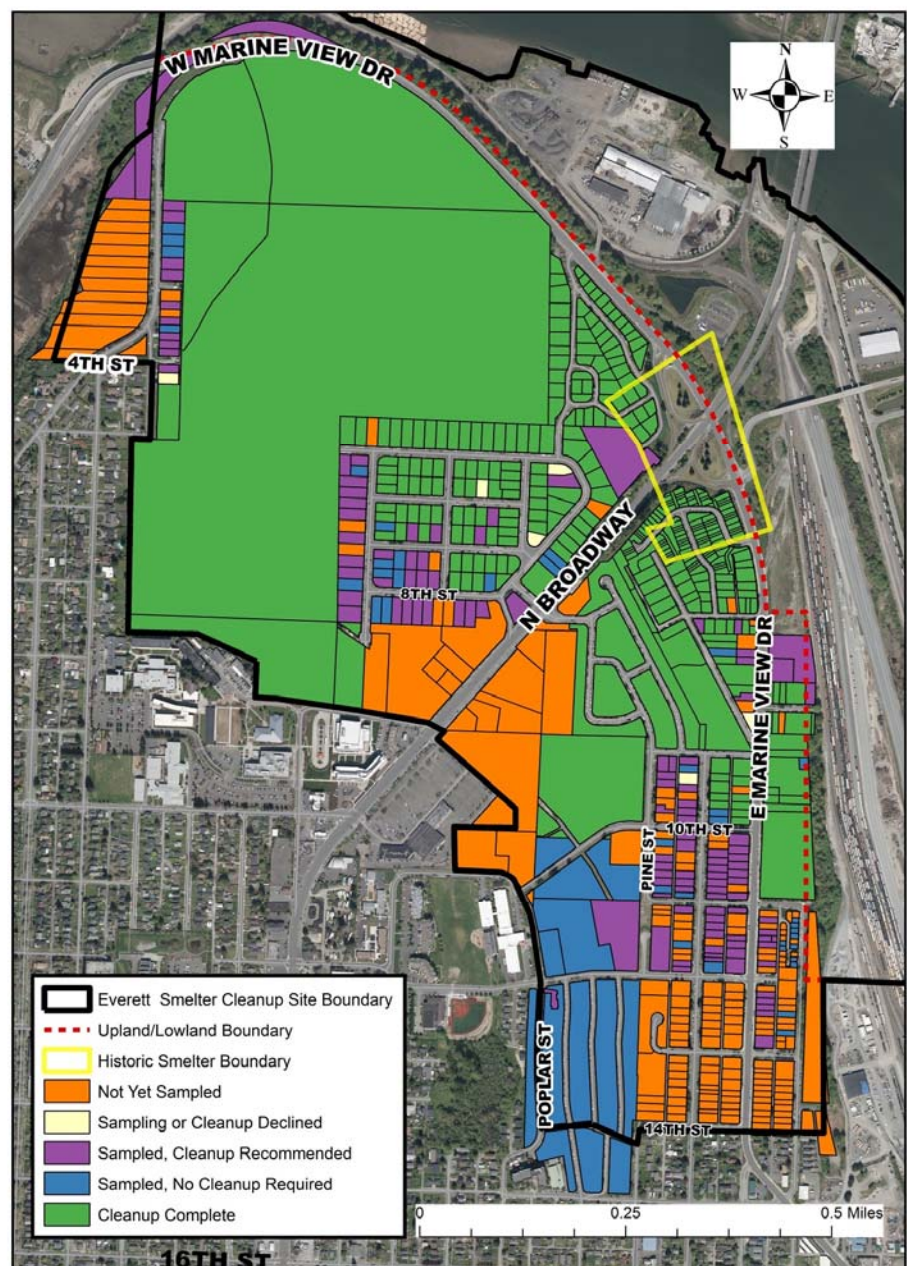
We are actively seeking additional state funds to continue cleanup of the site, including homes, parks, and industrial areas.

## We sampled soil at about 50 properties in 2016

We sampled for contamination in the 12 Pines and Baker Heights neighborhoods, Pine Street Mobile Home Park, and many other individual properties. That's more than 300 homes! And, great news—we found that most of Baker Heights and all of 12 Pines will not need cleanup.

## We plan to sample up to 100 properties in 2017

Beginning in March and continuing through the fall, we plan to sample residential properties west of Alverson Boulevard and along East Marine View Drive between 12th Street and 14th Street.



Everett Smelter Uplands Cleanup Progress



## Lowlands cleanup begins this summer

We finalized the Cleanup Action Plan in November 2016 for the Lowland Area, east of East Marine View Drive. Cleanup methods include soil removal, capping, institutional controls and monitored natural attenuation. We are working on a groundwater study to aid in the design of cleanup for the area north of Riverside Road and east of Riverside Drive.

The first phase of Lowlands cleanup is planned to start in summer 2017.

### Cleanup will affect traffic

Highly contaminated material is buried under the intersection of East Marine View Drive and the northbound ramps to SR 529. We must remove this material because it is polluting groundwater that travels into the Snohomish River.

The project will require traffic revision in this important intersection (see sidebar for details). The work will be completed in two phases. We will post construction updates in the neighborhood and on our website.

The following routes will be open throughout the project:

- Access to SR 529 from southbound East Marine View Drive
- Access to Riverside Business Park
- Pedestrian access to the sidewalk east of East Marine View Drive

### Construction details

**Duration:** About 3 months

**Phase 1:** 6-8 weeks

**Phase 2:** 6-8 weeks

**Start:** Summer 2017

**Working hours:** 7am—4pm  
Monday—Friday

#### Traffic revisions:

##### In Phase 1:

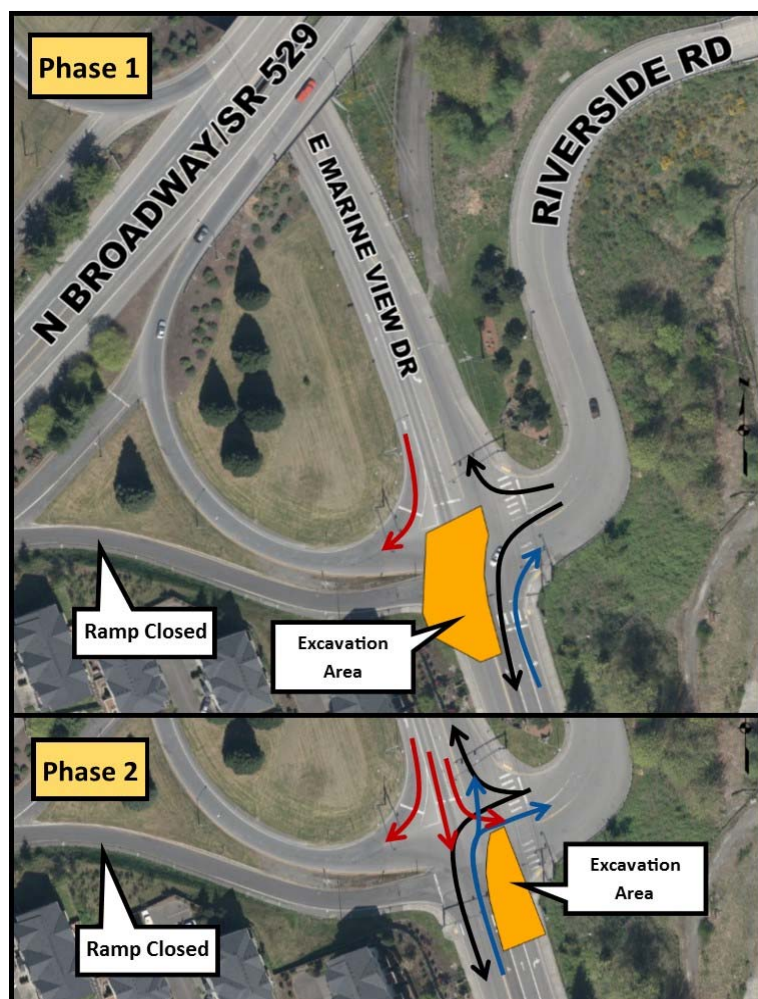
- No though traffic on East Marine View Drive.
- The only access to SR 529 will be from southbound East Marine View Drive.
- All entry to the Riverside Business Park will be from northbound East Marine View Drive. Exit is allowed to the north or south.

##### In Phase 2:

- All motions from southbound East Marine View Drive will reopen.
- Northbound through traffic on East Marine View Drive will reopen.
- No access to SR 529 from northbound East Marine View Drive or Riverside Business Park.

#### Detours:

- Use 19th Street and Broadway to bypass the intersection going south.
- Use 16th Street and Broadway to bypass the intersection going north.



3190 160th Ave SE  
Bellevue, WA 98008-5452

## Everett Smelter Cleanup Information



### **Información sobre la limpieza ambiental del Everett Smelter:**

Si le gustaría obtener este documento en español, favor de comunicarse con Gretchen Newman al 360-407-6097 o [preguntas@ecy.wa.gov](mailto:preguntas@ecy.wa.gov).

### **Thông tin về công tác làm sạch môi trường Everett Smelter:**

Nếu quý vị muốn nhận tài liệu này bằng tiếng Việt hoặc cần thêm thông tin, xin liên hệ ông Liêm Nguyễn: 360-407-6955, điện thư: [Lngu461@ecy.wa.gov](mailto:Lngu461@ecy.wa.gov).