

# Neighborhood Soil Sampling Continues

## Contacts and Information

Craig Rankine  
Department of Ecology  
Cleanup Project Manager  
Phone: (360) 690-4795  
E-mail:  
[Craig.Rankine@ecy.wa.gov](mailto:Craig.Rankine@ecy.wa.gov)

Sheila Coughlan  
Department of Ecology  
Public Involvement Coordinator  
Phone: (360) 407-6255  
Email:  
[Sheila.Coughlan@ecy.wa.gov](mailto:Sheila.Coughlan@ecy.wa.gov)

Sampling Consultant  
Maul Foster & Alongi  
Jackie McMaster  
Phone: (360) 947-2210  
Email:  
[jmcmaster@maulfoster.com](mailto:jmcmaster@maulfoster.com)

## Website

<https://fortress.wa.gov/ecy/gsp/sitepage.aspx?csid=3020>

## Site Information

Facility Site ID: Number: 1019  
Site Cleanup ID: Number: 3020

## Special Accommodations

To request ADA accommodation including materials in a format for the visually impaired, call Ecology at 360-407-6831 or visit:  
<https://ecology.wa.gov/accessibility>

People with impaired hearing may call Washington Relay Service at 711. People with speech disability may call TTY at 877-833-6341.

## NEW Soil sampling in the Phase 3 area

The Department of Ecology and the Port of Ridgefield (port) want to sample additional yards in the Phase 3 area located in the neighborhood east of the port property to determine the extent of dioxin contaminated soil.

Soil sampling may take place in two rounds (See Figure 1). The first round will start in spring 2019 at properties with identification numbers 079 – 086. After results of the first round are reported to property owners, it will be determined if a second sampling round is needed. The second sampling round may include some properties with identification numbers 087 – 093.

If your yard is selected for sampling, Ecology or the port's consultant, Maul Foster & Alongi, will:

- Send a letter or contact the homeowner in person.
- Request yard access.
- Create a sampling plan and collect yard soil samples.
- Present results and discuss next steps.

You can read more about the soil sampling process on the Ecology website at:

<https://fortress.wa.gov/ecy/gsp/sitepage.aspx?csid=3020>

If yard soil samples show that there are dioxins above state cleanup levels, Ecology and the port will work with the property owner to develop a cleanup plan. Typically, this plan involves soil removal and replacement at no cost to the property owner or tenants.

When Ecology and the port find the extent of contamination, the information will be presented in a report and made available for public comment.

## History of contamination

Between 1964 and 1993, Pacific Wood Treating (PWT) operated on port property at 111 West Division in Ridgefield, Washington. PWT treated wood products with a variety of toxic chemicals. Dioxins were the only contaminant found in soil above state cleanup levels in the off-property area. Soil contaminated with dioxins likely came from air-borne dust from PWT operations. Dust may have blown off the port property, been tracked onto roads from truck tires, and come off trucks hauling treated wood on Ridgefield city streets.

In 1993, PWT declared bankruptcy. Ecology and the port are funding the investigation and cleanup.

## Past soil sampling and yard cleanup

Over the past 21 years, the port has cleaned up contamination on the former PWT site. Starting in 2009, Ecology and the port sampled soil in your neighborhood to find the extent of off-property dioxin contamination. Soil sampling in yards and road rights-of-way was completed in the Phase 1 and Phase 2 areas. Yard soil replacement was completed on 29 residential properties in the Phase 1 area.

### Next steps

In the last part of cleanup, Ecology and the port will determine the extent of dioxin contaminated soil in the Phase 3 area. Ecology and the port will ask property owners for access to sample soil in their yards.

The timing of soil replacement for 8 remaining qualifying yards in the Phase 2 area and any qualifying yards in the Phase 3 area will be determined after the Remedial Investigation, Feasibility Study and final Cleanup Action Plan are completed for the portion of the site that is off port property.

### Healthy Actions

Dioxins transported by dust tend to stay in the upper layer of soil until they are disturbed. If you or your family are concerned, you can reduce exposure to potentially contaminated soil by:



- Washing your hands after working or playing outside, and before eating.



- Removing shoes when you come inside the house.



- Wearing gardening gloves while gardening or landscaping.
- Scrubbing food from the garden.



- Vacuuming regularly and dusting with a damp cloth.



- Washing children's toys often.
- Using grass and other ground covers to help prevent exposure. Landscaping and development can also dilute dioxins in soil.

### What are dioxins?

Dioxins are a family of chemicals with related stable chemical structures and similar harmful effects on living things.

### Where do dioxins come from?

Dioxins are generated by natural processes, such as forest fires and volcanoes. They are also the unintentional byproduct of human activities and can form during industrial processes and from fireplaces, wood stoves, and exhaust from diesel engines.

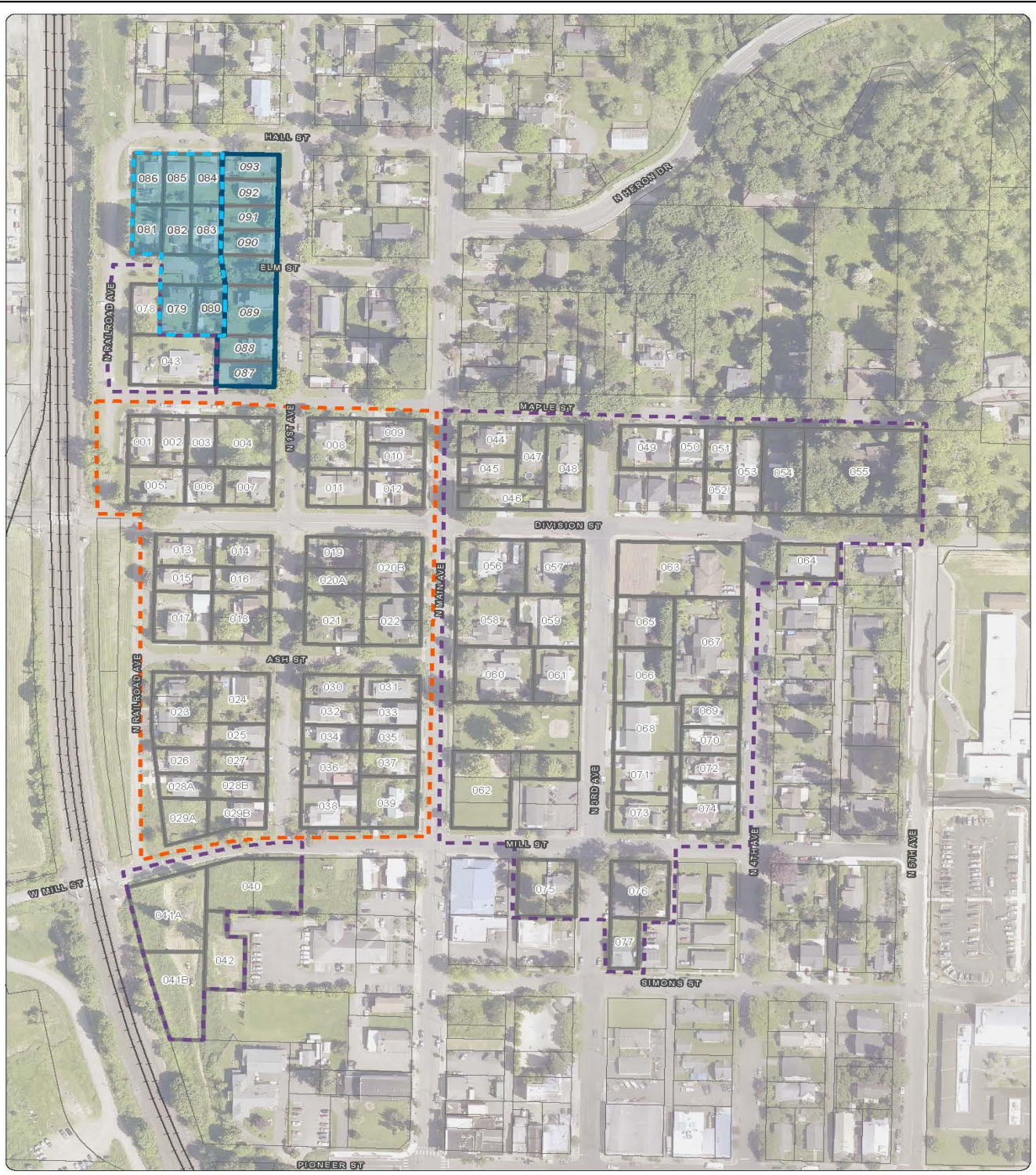
Dioxins are found everywhere because they do not break down easily in the environment. Most people are exposed to very low levels of dioxins when they consume food or milk, breathe air, or have contact with dioxin-contaminated soils.

Dioxins created at the Pacific Wood Treating cleanup site are related to manufacturing of wood-treating chemicals, specifically pentachlorophenol.

### Healthy actions to protect you and your family

Dioxins do not pose an immediate health risk. However, long-term exposure to elevated levels increases the risk of health problems. Young children are more at risk than adults. The health risk comes from accidentally swallowing, or breathing in the dust from the soil over a long period. We recommend you protect yourself and your family by practicing healthy actions.



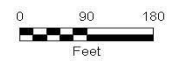


Source: Aerial photograph (2014) and tax lots obtained from Clark County GIS.

- Legend**
- Phase 1 Off-Property Portion
  - Phase 2 Off-Property Portion
  - Phase 3 - Sample Properties
  - Phase 3 - Potential Sample Properties
  - 018 Property Boundary (with Property Identification Number)
  - Clark County Tax Lots (2014)
  - Railroad

**Figure 1**  
**Sample Properties**

Former PWT Site  
Ridgefield, Washington



**MAUL FOSTER ALONGI**  
p. 971 544 2139 | www.maulfooster.com

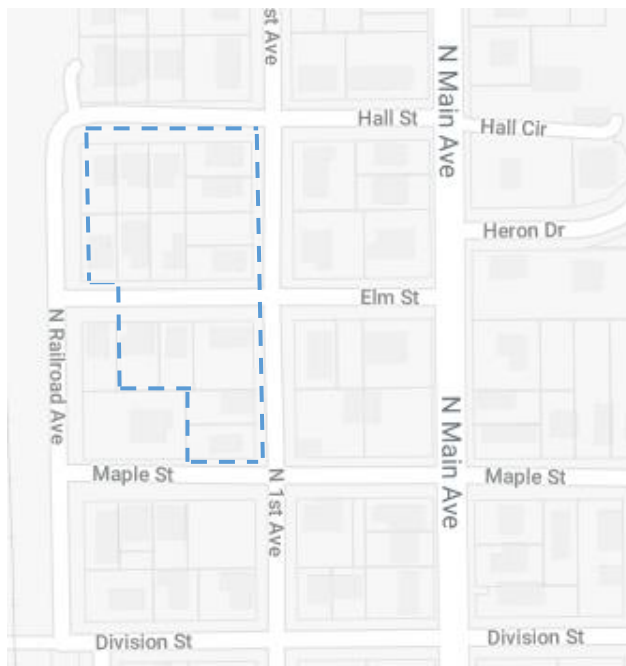
This product is for informational purposes and may not have been prepared for, or suitable for legal, engineering, or surveying purposes. Users of this information should review or consult the primary data and instruments sources to ascertain the accuracy of the information.



DEPARTMENT OF  
**ECOLOGY**  
State of Washington

Toxics Cleanup Program  
PO Box 47775  
Olympia, WA 98504-7775

## Neighborhood Soil Sampling



### Why did I receive this mailing?

The Washington Department of Ecology and the Port of Ridgefield may request permission to sample soil from properties located inside the blue box. The purpose is to determine if contamination from Pacific Wood Treating extends to these locations. This fact sheet is being mailed to inform the community about the work being done.

### What can I do?

Please review the fact sheet. Feel free to use the enclosed contact information to submit your questions and concerns.

To be removed from the mailing list, please call Sheila Coughlan at (360) 407-6255 or email at [Sheila.Coughlan@ecy.wa.gov](mailto:Sheila.Coughlan@ecy.wa.gov)

**¿Habla Español?** Si necesita esta informacion en espanol, contactenos a [preguntas@ecy.wa.gov](mailto:preguntas@ecy.wa.gov)