

# Everett Smelter Project: Spring 2025



2022 cleanup group construction.

## Contacts and Webpages

### Everett Smelter Hotline

425-446-1024

Need another language? Interpretation available upon request.

### Website

[www.ecology.wa.gov/EverettSmelter](http://www.ecology.wa.gov/EverettSmelter)

### Email List

Sign up to receive updates<sup>1</sup> like this one electronically. Unsubscribe at any time.



### Dirt Alert Map

Learn if your property is in the cleanup area  
<https://apps.ecology.wa.gov/dirtalert/everett>

### Project Manager

Sandra Matthews | (425) 223-1999  
[Sandra.Matthews@ecy.wa.gov](mailto:Sandra.Matthews@ecy.wa.gov)

**Facility Site ID:** 2744 | **Cleanup Site ID:** 4298

### Snohomish County Health Department

Call for more information on:  
Blood lead testing for children  
(425) 258-8401  
Contaminated soil disposal  
(425) 339-5250  
[snohd.org](http://snohd.org)



### Washington State Department of Health

[www.doh.wa.gov/community-and-environment/contaminants/arsenic](http://www.doh.wa.gov/community-and-environment/contaminants/arsenic)

## Spring 2025 project updates

Despite the state spending freeze, the Everett Smelter Project Team continues to remove arsenic contamination left behind by the historic Everett Smelter. The cleanup area is divided into two sections, the mostly residential upland area and the industrial lowland area. Learn more about the following items below:

- Updates for each active cleanup group (Page 2).
- Signing up for free soil sampling (Page 3).
- Remedy design in lowlands Area B1 (Page 3).
- Healthy actions to keep you and your family safe when living or working in/around contaminated soil (Page 4).

## Translations Available

**Español:** Descargue una traducción de este documento en español visitando nuestro sitio web en <http://www.ecy.wa.gov/EverettSmelter> o llamando a la Línea Directa de la Fundación de Everett al (425) 446-1024.

**Tiếng Việt:** Tải xuống bản tiếng Việt của tài liệu này bằng cách truy cập mạng tại <http://www.ecy.wa.gov/EverettSmelter> hoặc gọi Đường dây nóng của Everett Smelter theo số (425) 446-1024.

**Русский язык:** Скачать перевод этого документа на русский язык можно на нашем веб-сайте по адресу [www.ecy.wa.gov/EverettSmelter](http://www.ecy.wa.gov/EverettSmelter) или позвонив по телефону горячей линии Everett Smelter (425) 446-1024.

<sup>1</sup> [https://public.govdelivery.com/accounts/WAECY/subscriber/new?topic\\_id=WAECY\\_235](https://public.govdelivery.com/accounts/WAECY/subscriber/new?topic_id=WAECY_235)

## Upland progress update: 2020 - 2024 cleanup groups

Cleaning up contaminated soil in the Everett Smelter upland area takes place in distinct phases. Our team is currently working with three cleanup groups at different stages in the process.

### Everett Smelter residential cleanup phases



#### 2020 cleanup group



- Soil cleanup and landscape care workshops are complete.
- Lawn fertilization will occur in Spring 2025.
- Cleanup documentation will be sent to homeowners in Spring 2025.

#### 2022 cleanup group

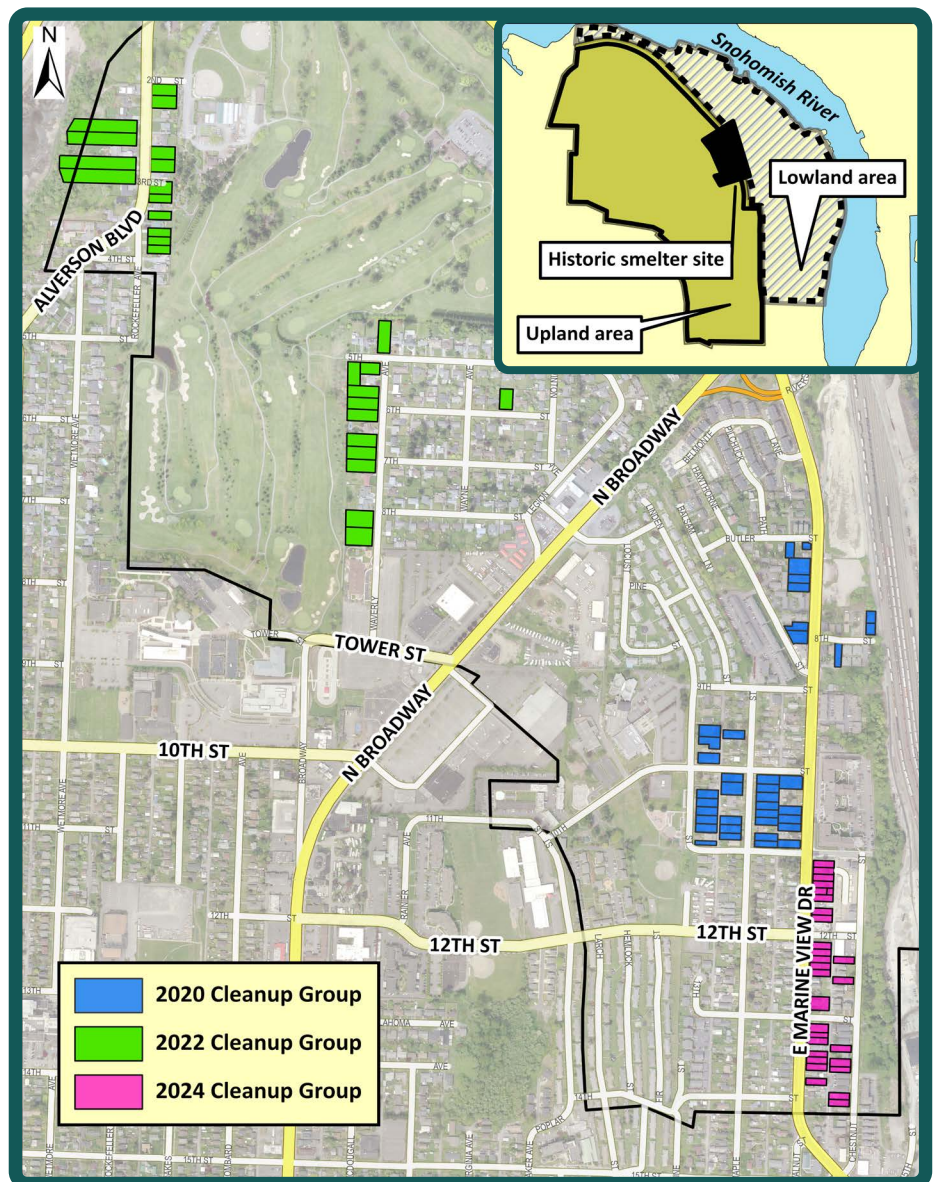


- Soil cleanup is underway and expected to finish in Spring 2025.
- Landscape care workshops will be held as construction concludes.

#### 2024 cleanup group



- Cleanup plans are being finalized.
- Engineering designs to follow in Summer 2025.
- Following design completion, Ecology will accept bids for conducting the cleanup.
- A pre-construction meeting will be held after contractor selection.



The locations of the three active cleanup groups in Upland area of the Everett Smelter Cleanup Project.



## Sign up for soil sampling. It's free!

Another round of free soil sampling is happening now. Sign up today! 94% of all residential properties have been sampled. Find the access agreement on our webpage at <https://bit.ly/Ecology-2023AA>. You can also request one by calling the hotline at (425) 446-1024.

# 20

more  
residential  
properties  
need sampling  
in the Everett  
Smelter  
cleanup area.

### Returning your access agreement



Mail it.  
Everett Smelter Project  
PO Box 330316  
Shoreline, WA 98133



Take a photo.



Download the form.\*

Email forms to  
[Shreejita.Basu@ecy.wa.gov](mailto:Shreejita.Basu@ecy.wa.gov)

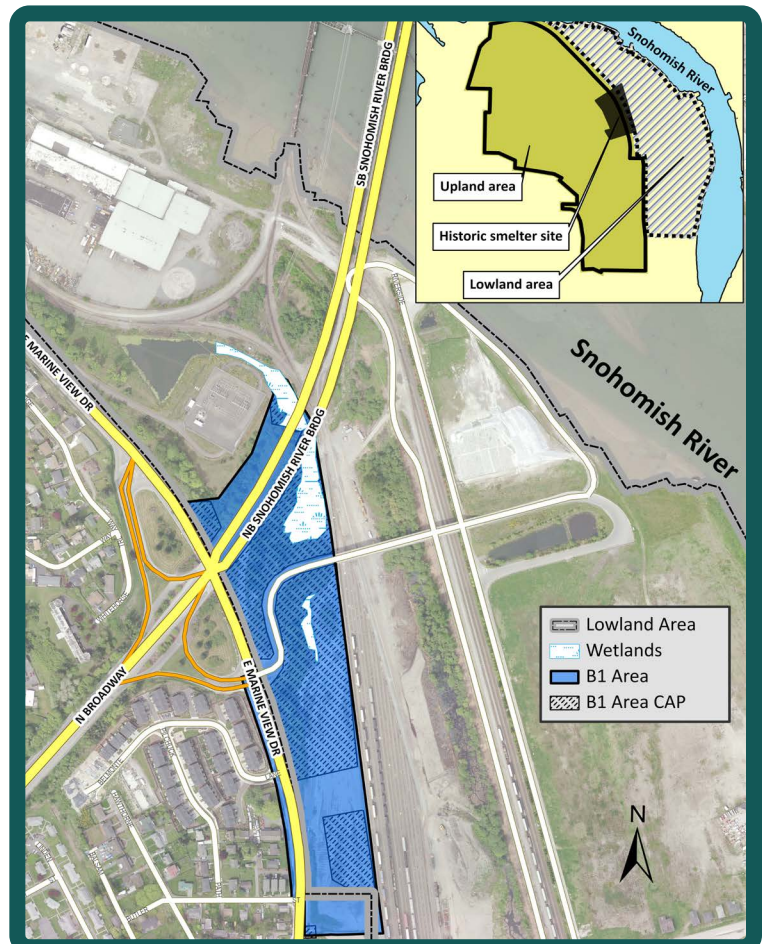
\* <https://bit.ly/Ecology-2023AA>

The Everett Smelter cleanup team accepts soil sampling enrollment forms by mail or email.

## Remedial design work for Area B1 of the Everett Smelter Lowland

The Lowland is an industrial portion of the site that lies on the floodplain of the Snohomish River. Current work is happening in Area B1 which is east of East Marine View Drive and mostly south of SR 529 along the western edge of the lowland portion of the Everett Smelter cleanup site. The selected remedy for Area B1 includes the dewatering of contaminated wetlands (after receiving appropriate permits), treatment and disposal of extracted contaminated wetland water, capping of contaminated soils, and rerouting of roadway stormwater to prevent the reestablishment of the wetlands.

Ecology is working with an environmental engineering firm to design a low permeability cap and improve the stormwater flow in Area B1. This will inhibit stormwater from leaching arsenic from the contaminated soil into the groundwater that empties to the Snohomish River. This work includes some additional investigation and data collection required for design purposes. The Engineering Design Report for the cleanup action will go out for public comment later this year. For more information, visit our website.



The work area (Area B1) is just east of East Marine View Drive and south of the Snohomish River Bridge.

Toxics Cleanup Program  
PO Box 330316  
Shoreline, WA 98133-9716

## Everett Smelter Project: Spring 2025

Take these steps to protect your family from contaminated soil!



Wash your  
hands well after  
handling soil.



Grow veggies in  
raised beds.  
Wash before  
eating.



Wear gloves.  
Wash dirty  
clothes  
separately.



Mop, damp dust  
and vacuum  
often inside.



Take your  
shoes off  
in the house.



Brush and  
bathe your pet  
often. Give pets  
their own beds.

Cleaning your hands, veggies, pets, and home are easy ways to protect you and your family from arsenic contamination in soil.

ADA accessibility: To request an ADA accommodation, contact Ecology by phone at 425-229-3683 or email at [Meredith.Waldref@ecy.wa.gov](mailto:Meredith.Waldref@ecy.wa.gov), or visit [ecology.wa.gov/Accessibility](http://ecology.wa.gov/Accessibility). For Relay Service or TTY call 711 or 877-833-6341.