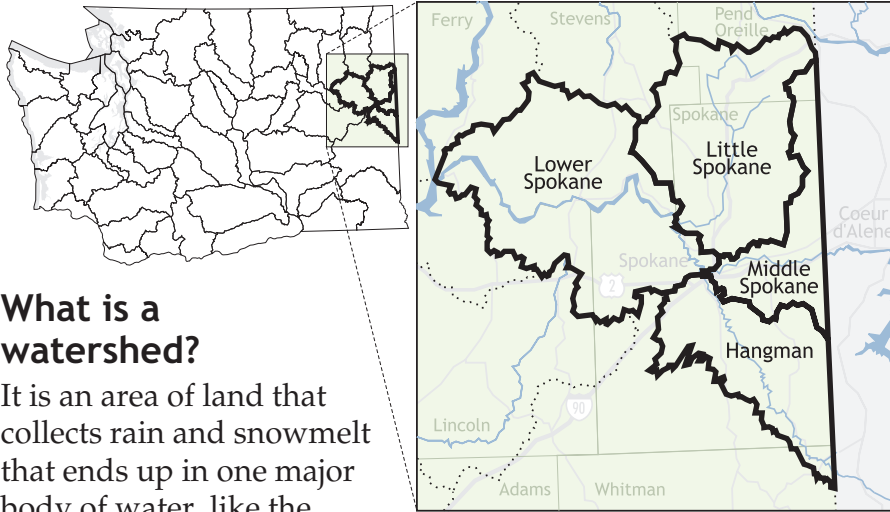


## Do you know what watershed you live in?



### What is a watershed?

It is an area of land that collects rain and snowmelt that ends up in one major body of water, like the Spokane River.

### Useful Resources

For more information and helpful links, visit Ecology's Web site: [www.ecy.wa.gov/](http://www.ecy.wa.gov/)

For more information on wise water use contact: Water Stewardship Program [www.waterstewardship.org](http://www.waterstewardship.org) (509) 625-6279

For more information on household hazardous waste disposal contact: Spokane Regional Solid Waste [www.solidwaste.org](http://www.solidwaste.org) (509) 625-6800

For more information and assistance with managing property for large animals contact: Spokane County Conservation District: [www.sccd.org](http://www.sccd.org) (509) 535-7274

For more information on composting and natural lawn and garden care contact: WSU Cooperative Extension [www.spokane-county.wsu.edu](http://www.spokane-county.wsu.edu) (509) 477-2048

*If you need this publication in an alternate format, please call Ecology's Water Quality Program at 509-329-3557. Persons with hearing loss can call 711 for Washington Relay Service. Persons with a speech disability can call 877-833-6341.*

# Welcome to the Watershed

*We would like to welcome you to the Spokane River watershed. You live in a special place where we all take part in keeping our water healthy.*

*Everything we do in our homes, yards, and gardens has an effect on the health of our watershed. Lawn and garden chemicals, pet waste, and other pollutants can be carried into our rivers, streams and lakes by run-off. You can help protect our water by taking some simple steps.*



# Here is how you can keep our water clean and healthy!

## In the Kitchen

■ Use phosphorus-free automatic dishwashing detergents. (Detergents with phosphates will be banned in Spokane County in 2008.)

■ Compost kitchen scraps instead of using the in-sink garbage disposal to avoid excess nutrients in waste water and save money on the water bill.

■ Run only full loads of dishes in the dishwasher to save water.

■ When hand washing dishes, fill the sink rather than run the water.



## Pets and Animals

■ Encourage cats to use the litter box by keeping it clean and disposing of dirty litter in the trash instead of the yard or garden.



■ Fence larger animals away from ponds, ditches, lakes and streams.

■ Contain and cover manure, then use it as the valuable compost it is.

## Tips on Toxics

■ Dispose of household hazardous wastes properly. Disposal is free in Spokane County. Call the county's recycling hotline for drop-off information (509) 625-6800.

■ Buy the least hazardous product for the job, use the recommended amount and read the label carefully.



■ Try one or more of the less-toxic, water friendly recipes below.

- *All purpose cleaner*: mix 1 cup vinegar in a pail of water
- *Bath/sink cleaner*: sprinkle baking soda, scrub, and rinse
- *Drain cleaner*: ½ cup of baking soda in drain followed by 1 cup of vinegar. Let fizz, then add 2 cups of boiling water
- *Toilet cleaner*: scrub with a solution of ½ cup borax in 1 gallon of water
- *Window cleaner*: mix 1 part vinegar to 4 parts water

## Lawn & Garden Care

■ Use a phosphorus free fertilizer unless establishing a new lawn. To find phosphorus free fertilizers check the ratio 10-0-5. Phosphorus is the number in the middle.

■ Use safer alternatives to chemical pesticides and/or talk with a licensed applicator about using safer alternatives for the yard and garden.

■ Read herbicide and pesticide labels and follow application directions. Never apply more than the recommended amount.

■ Avoid “weed and feed” products that spread harmful chemicals over a large area.



*Your contribution may seem like a drop in the bucket, but that is the best way to protect our water – one drop at a time.*