

Pope & Talbot, Inc. Sawmill Site Port Gamble, Kitsap County, WA

Site Investigation Documents Ready for Public Review

*A PUGET SOUND INITIATIVE site – Reaching the goal of a
healthy, sustainable Puget Sound now and forever*



The Department of Ecology welcomes your comments on a proposed agreement and draft Public Participation Plan for a new cleanup site.

Ecology is asking for your comments on a new proposed agreement to study a site on Puget Sound for cleanup. This Site, called the Pope & Talbot, Inc. Sawmill Site, is one of several located on the waterfront that will be studied for cleanup under the state's Puget Sound Initiative. It is located at the mouth of Port Gamble Bay, on the east end of NE View Drive, in Port Gamble, Kitsap County, WA.

Site background

The Pope & Talbot Sawmill manufactured forest products for over 142 years (1853 to 1995). During this time, the Site consisted of sawmill buildings, two woodchip loading facilities, a log transfer facility, and log rafting and storage areas. A separate log storage area for Pope & Talbot was located at the southwest end of Port Gamble Bay (see Facility Site ID #1567413). After the mill was disassembled and removed in 1997, the above-water portion of the Site was leased for log sorting, wood chipping, materials handling, and marine research.

Manufacturing activities released dangerous substances, including

petroleum hydrocarbons, carcinogenic polycyclic aromatic hydrocarbons (PAHs), and metals. Some of this contamination has been found in soil and groundwater.

Log rafting and chip loading operations deposited wood waste on the bed of Port Gamble Bay. Wood waste smothers near-shore aquatic habitat and animals such as clams, and can cause changes in water chemistry that can harm the food chain. Between 2002 and 2007, approximately 26,000 tons of soil and 31,000 cubic yards of wood debris were removed from the Site.

Overview of the Agreed Order

The proposed agreement, called an Agreed Order, is a legal document between Ecology and two companies that have owned or operated the Site: Pope Resources LP and Olympic Property Group LLC. These parties are known as Potentially Liable Parties, or PLPs. The Agreed Order describes the studies that the PLPs agree to perform on the Site.

The Agreed Order covers the following studies and documents:

- Remedial Investigation and Feasibility Study (RI/FS) work plan. It explains the work needed to look for and analyze contamination in soil, water, and sediments.
- RI/FS report. It presents the results of the study and proposes alternatives for cleanup actions

**Ecology is accepting comments from
May 9 to June 9, 2008**

Send comments to:
**Kevin MacLachlan, Site Mgr.
WA Department of Ecology
Toxics Cleanup Program
P.O. Box 47600
Olympia WA 98504-7600
(360) 407-6798
E-mail: kmac461@ecy.wa.gov**

To review documents:
**Poulsbo Library
700 NE Lincoln Street
Poulsbo, WA 98370
Hours: Mon.-Thurs. 10am-8pm,
Fri.-Sat. 10am-6pm, Sun. 1-5pm**

**WA Department of Ecology
Headquarters
300 Desmond Drive SE
Lacey, WA 98503
By appointment only:
Contact Carol Dorn,
cesg461@ecy.wa.gov or
(360) 407-7224**

**Ecology web site:
http://www.ecy.wa.gov/program/s/tcp/sites/pope/pope_hp.html**

Facility Site #93937775

Pope & Talbot, Inc. Sawmill Site, Kitsap County, WA

identify a preferred cleanup action and a schedule to remediate the contamination.

The purpose of the Agreed Order is to protect human health and the environment. It ensures that cleanup happens in a timely manner and according to Washington State's cleanup law, the Model Toxics Control Act.

Overview of the draft Public Participation Plan

Ecology and the PLPs are committed to providing the public with timely information and meaningful opportunities to participate in the cleanup process. As part of this commitment, Ecology and the PLPs agree to provide a public participation plan. This plan outlines how citizens and interested parties can learn about and provide input on the cleanup.

Your comments and ideas are needed to improve the cleanup. The public participation plan explains how Ecology will do the following:

- Notify the public when and where documents are available for review and comment.
- Notify the public about how they can become involved.
- Provide public participation opportunities.

- Consider public comments in cleanup decisions.

Protecting and restoring Puget Sound at the Pope & Talbot Sawmill Site

Governor Chris Gregoire and the Washington State Legislature approved the Puget Sound Initiative. One of the objectives of the Initiative is to protect and restore Puget Sound, cleaning up 50-60 sites within one-half mile of the Sound. One of these is the Pope & Talbot Sawmill Site. These cleanup actions will help to reduce pollution and restore habitat and shorelines in Puget Sound.

Other sites and activities near this site:

- DNR Lease Area site: A separate log storage area for Pope & Talbot, located at the southwest end of Port Gamble Bay (Facility Site #1567413)

How to submit your comments

Ecology welcomes your comments on the proposed Agreed Order and draft public participation plan from May 9 to June 9, 2008. For your review, these documents can be found on the

Ecology web site and at the locations listed on the first page of this fact sheet.

Please send your comments by June 9, 2008, to Ecology's Site Manager, Kevin MacLachlan. Contact information can be found on the first page of this fact sheet. Comments may be sent by mail or e-mail. Please include "Pope & Talbot" in the subject line.

What's next?

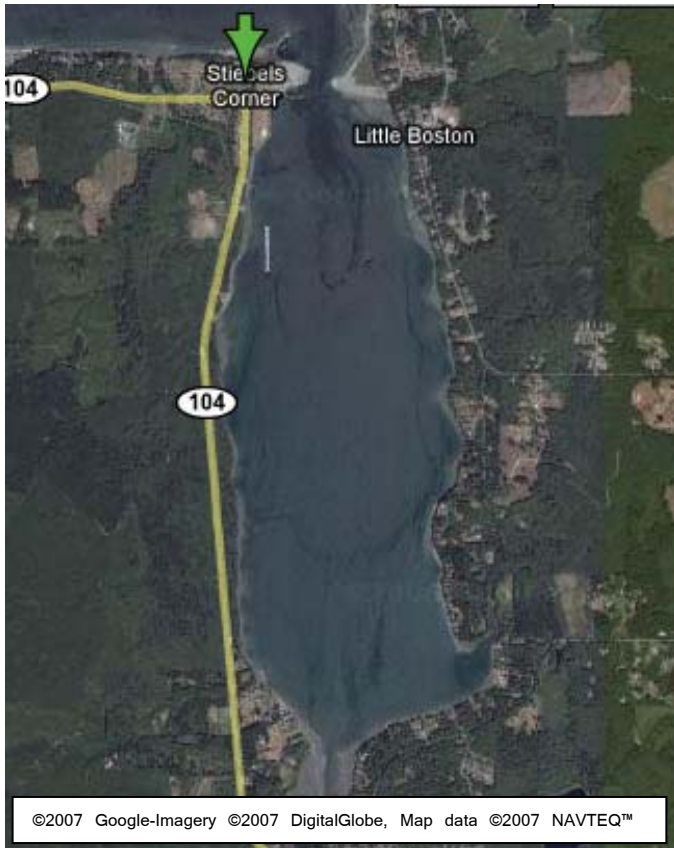
Once the public comment period ends, Ecology will review and consider all comments that have been received. The Agreed Order and draft public participation plan may be modified based upon your comments.

As future documents on the Site are developed, you will be notified of additional public comment periods.

For information about other Ecology public comment periods, meetings, hearings, workshops, and open houses, please visit Ecology's public events calendar at:

<http://apps.ecy.wa.gov/pubcalendar/calendar.asp>. Read *Frequently Asked Questions about Effective Public Commenting* at this link to learn more about the public comment process.

Pope & Talbot, Inc. Sawmill Site, Kitsap County, WA



The Pope & Talbot, Inc. Sawmill Site is located at the mouth of Port Gamble Bay, at the east end of NW View Drive in Port Gamble, WA.

**Pope & Talbot, Inc. Sawmill Site,
Port Gamble, Kitsap County, WA**

*Ecology Seeks Public Comment
on Draft Documents*

Public Comment Period
May 9 to June 9, 2008



Department of Ecology
Toxics Cleanup Program
PO Box 47600
Olympia, WA 98504-7600