

Draft Agreed Order Documents Ready for Public Review

Public Comment Invited

The Washington State Department of Ecology (Ecology) invites comments on the agency's draft *Agreed Order* with the Port of Seattle. The Order includes a Scope of Work.

The Site is located at 6000 West Marginal Way SW, Seattle, WA. You are invited to:

- **Review** the Draft Agreed Order including the Scope of Work and the Draft Public Participation Plan.
- **Send** your comments to Ecology for consideration. Comments will be accepted *January 13, 2011, through February 14, 2011.*

See the box at the right for details about where to review documents and submit comments.

Site Location

The Port of Seattle N Terminal 115 site is generally located at 6000 West Marginal Way SW in Seattle (See page 3). This is an industrial area located just south of Glacier Northwest, Inc.. West Marginal Way SW is immediately to the west. The eastern portion of the property parcel is adjacent to the west bank of the Lower Duwamish Waterway.

The Port of Seattle N Terminal 115 site includes upland areas, groundwater, and may include surface water and sediment (mud at the bottom) in the Lower Duwamish Waterway that are contaminated. The final site boundaries will be defined by the extent of contamination.

Site Background

The Port of Seattle currently owns the property that was formerly operated by Metals Recycling, Inc. and M & T Chemicals, tin reclamation facilities. Currently, the Port leases to two tenants, Gene Summy Lumber Co., which distributes building materials, and Commercial Fence Corp., a fence cupplier

Comments Accepted

January 13, 2011 through
February 14, 2011

Submit Comments and Technical Questions to:

Donna Ortiz - Site Manager
WA Department of Ecology
Toxics Cleanup Program
3190 160th Ave SE
Bellevue, WA 98008
Phone: (425) 649-7231
E-mail: Donna.Ortiz@ecy.wa.gov

DOCUMENT REVIEW LOCATIONS

South Park Branch – Seattle Public Library

8604 Eighth Ave S
Seattle, WA 98108
(206) 615-1688

Hours: Mon.-Tues. 1 p.m.-8 p.m., Wed.-
Thurs. 11 a.m.-6 p.m., Sat. 11a.m.-6 p.m.,
Fri., Sun. Closed

WA Department of Ecology

3190 160th Ave SE
Bellevue, WA 98008

Call for an appointment:
(425) 649-7190

Ecology's Toxics Cleanup Website

[http://www.ecy.wa.gov/programs/tcp/sites/
PortOfSeattleN_Term115/Terminal115_h
p.html](http://www.ecy.wa.gov/programs/tcp/sites/PortOfSeattleN_Term115/Terminal115_h p.html)

Facility Site ID #: 2177

Contaminants of Concern

Contamination at this site is likely a result of past industrial operations. Soil, groundwater, and stormwater are contaminated at this site. The contaminants of concern in the **soil** are:

- Carcinogenic polynuclear aromatic hydrocarbons (cPAHs)
- Metals (arsenic, mercury, copper, lead, and zinc)

The contaminants of concern in the **groundwater**:

- Carcinogenic polynuclear aromatic hydrocarbons (cPAHs)
- Semi-volatile organic compounds (SVOCs)
- Metals (arsenic, cadmium, chromium, copper, mercury, and zinc)
- Lube oil range hydrocarbons

The contaminant of concern in **stormwater** solids is:

- Metals (zinc)

Overview of the Agreed Order

The proposed draft Agreed Order is a legal document between Ecology and the owners of the site, the Port of Seattle. The site owner is known as the Potentially Liable Person or PLP. The Agreed Order describes the work that the PLP agrees to perform on the site. The purpose of the Agreed Order is to protect human health and the environment. It ensures that the cleanup happens in a timely manner and according to Washington State's cleanup law, the Model Toxics Control Act.

Site cleanup activities that will occur under the Agreed Order include the following:

- Remedial Investigation (RI). The RI will collect data necessary to adequately characterize the contamination in soil, groundwater, stormwater, and sediments.
- Feasibility Study (FS). The FS will use the results of the RI to propose cleanup alternatives for the site.
- Draft Cleanup Action Plan (dCAP). The dCAP uses the RI/FS to help identify a preferred cleanup action and a schedule to remediate the contamination.

Overview of the draft Public Participation Plan

Ecology and the PLP are committed to providing the public with timely information and meaningful opportunities to participate in the cleanup process. Ecology worked with the PLP and stakeholders to draft a Public Participation Plan according to the Model Toxics Control Act (MTCA). This plan is designed to promote meaningful community involvement during the investigation and cleanup of the Port of Seattle site. This plan outlines how citizens and interested parties can learn about and provide input on the cleanup.

Your comments and ideas are needed to improve the cleanup. The public participation plan explains how Ecology will do the following:

- Notify the public when and where documents are available for review and comment.
- Notify the public about how they can become involved.

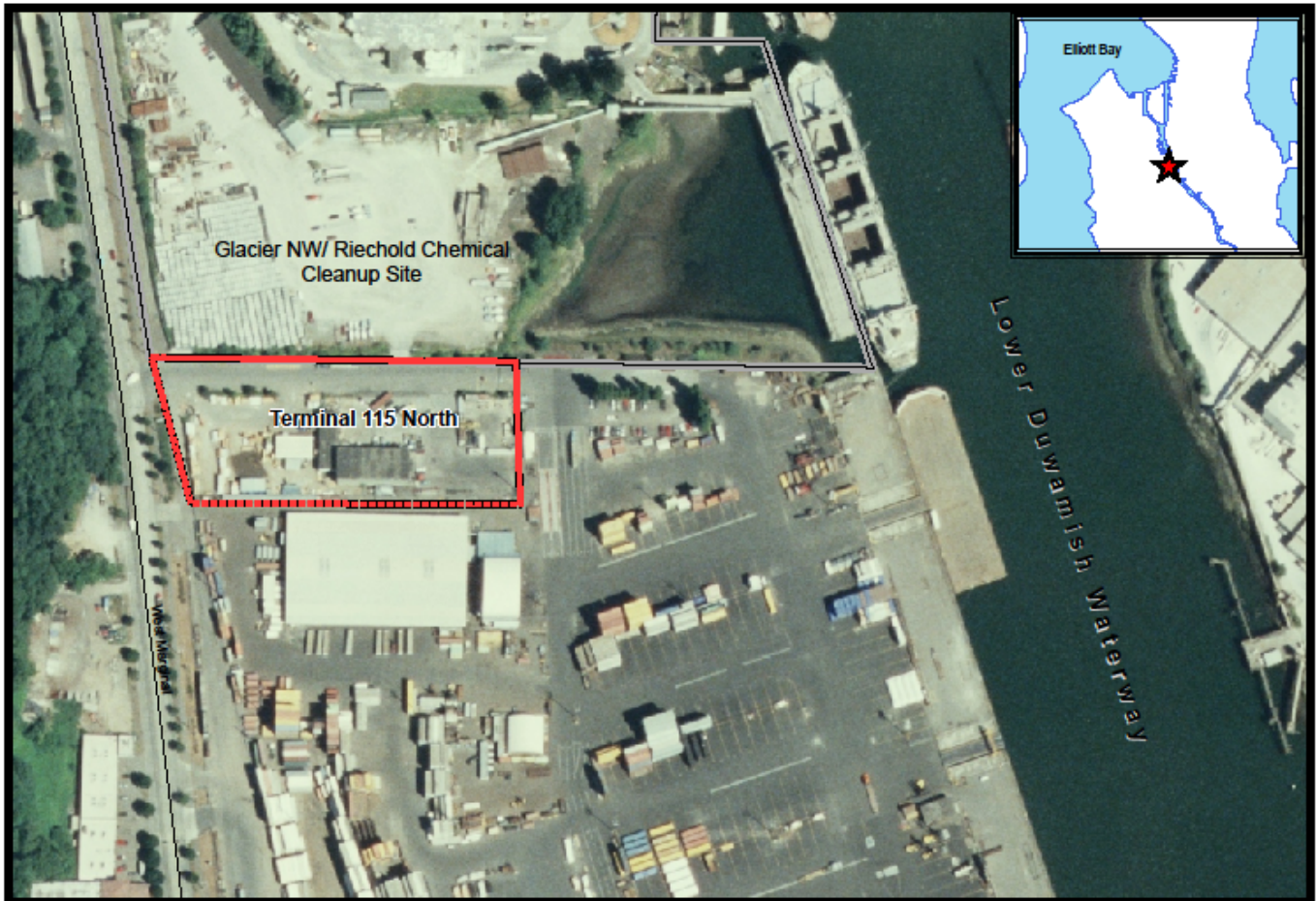
Lower Duwamish Waterway Cleanup

The Port of Seattle site is located within the larger Lower Duwamish Waterway cleanup site. The Lower Duwamish Waterway site is made up of approximately 5.5 miles of the downstream portion of the Duwamish

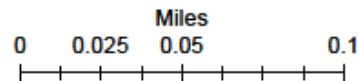
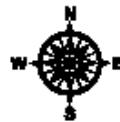
Port of Seattle N Terminal 115

Waterway which flows into Elliott Bay. This part of the waterway is designated as a contaminated site under both state and federal law. Ecology and the U.S. Environmental Protection Agency (EPA) are working to clean up contaminated sediments and control sources of recontamination in the Lower Duwamish Waterway (LDW). Ecology works with the U.S. Environmental Protection Agency (EPA) and other local agencies and businesses to clean up the Lower Duwamish. For more information see Ecology's website:

http://www.ecy.wa.gov/programs/tcp/sites/lower_duwamish/lower_duwamish.hp.html



Port of Seattle Terminal 115 North

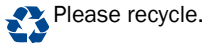


What Happens Next?

Once the public comment period ends, Ecology will review and consider all comments that have been received. The Agreed Order and draft public participation plan may be modified based upon your comments. As other documents on the site are developed, you will be notified of future public comment periods.



3160 160th Ave. SE
Bellevue, WA 98008



Port of Seattle N Terminal 115, Seattle, WA

Ecology Seeks Public Comment on Draft Agreed Order, and Draft Public Participation Plan
Public Comment Period: January 13, 2011 – February 14, 2011

華盛頓州生態管理署(生管署)邀請大眾對MRI錫金屬回收公司)的清理整治工作草擬同意命令,草擬工作計劃,和大眾參與計劃提供建議.若需任何中文消息請跟林昊聯絡。 電話：425-649-7187

電子信箱：lin461@ecy.wa.gov。

Bộ Môi Sinh kêu gọi công chúng góp ý về các bản thảo Sắc lệnh Đồng thuận, Kế hoạch hoạt động và Kế hoạch công chúng tham gia liên quan đến Cảng Seattle/Công ty khôi phục chất thiếc MRI. Thời hạn thu nhận ý kiến từ 13 tháng 1 năm 2011 đến hết ngày 14 tháng 2 năm 2011. Muốn có thêm chi tiết bằng tiếng Việt, xin vui lòng liên lạc Teddy (Như) Lê, điện thoại 360-407-6948 hoặc bằng điện thư tại tele461@ecy.wa.gov trên tiêu đề Địa điểm xưởng tàu Duwamish.

Ecología quiere recibir comentarios públicos sobre el borrador de la Orden Acordada, Plan de Trabajo Preliminar y Plan de Participación Pública Preliminar para el sitio de “El Puerto de Seattle.” El periodo de recibir comentarios públicos es desde el 13 de enero de 2011 hasta el 14 de febrero de 2011.. Para obtener más información en español, favor de comunicarse con Gretchen Newman al número telefónico (360) 407-6097 o vía el correo electrónico al gnew461@ecy.wa.gov y asegurarse que se haga referencia al sitio de “El Puerto de Seattle.”

Facility Site ID#: 2177

If you need this publication in an alternative format, call (425) 649-7231. Persons with hearing loss, call 711 for Washington Relay Service. Persons with speech disability call 877-833-6341.

The Washington State Department of Ecology (Ecology) invites comments on a draft **Agreed Order** that includes a Scope of Work. Port of Seattle currently owns the property that was formerly operated by MRI, a tin reclamation company. The site is located at 6000 West Marginal Way SW., Seattle, Washington. On December 2, 2010, the Port of Seattle, signed the **draft Agreed Order** to conduct a remedial investigation/feasibility study (RI/FS) and submit a draft cleanup action plan (dCAP).

Initial sampling found metals and carcinogenic poly aromatic hydrocarbons in soil; metals including arsenic; carcinogenic poly-aromatic hydrocarbons, semi-volatiles and lube oil range hydrocarbons in groundwater;. The purpose of the remedial investigation is to determine the extent of hazardous substances in, soil, groundwater, surface water, sediment I at the site. Information and data obtained during the RI phase of this study will be used to support the evaluation and selection of cleanup solutions. Once a cleanup alternative is selected, it will be described in the draft Cleanup Action Plan (dCAP).

The Public Participation Plan is also available for review and explains how Ecology will keep the community involved. It outlines and describes outreach approaches Ecology will use. The public comment period for these documents is from January 13, 2011 through February 14, 2011.

Spanish

El Departamento de Ecología de Estado de Washington (Ecología) solicita sus comentarios sobre el borrador de una **Orden Acordada**. La Orden Acordada incluye el alcance del trabajo. El Puerto de Seattle es el presente dueño de la propiedad. La propiedad anteriormente fue operada por MRI, una compañía de reclamación de estaño. El sitio está ubicado en 6000 West Marginal Way SW (Suroeste), Seattle, Washington. El segundo de diciembre de 2010, el Puerto de Seattle firmó un borrador de una **Orden Acordada** para llevar a cabo una investigación remediadora/estudio de factibilidad (RI/FS, por sus siglas en ingles) y para entregar un borrador del Plan de Acción para la Limpieza (dCAP, por sus siglas en ingles).

Las muestras iniciales encontraron metales (incluyendo arsénico) y hidrocarburos aromáticos policíclicos carcinogénicas en el suelo; hidrocarburos aromáticos policíclicos carcinogénicas y hidrocarburos semi-volátiles (en las concentraciones que pertenece al aceite lubricante) en el agua subterránea; y metales en los sólidos contenidos en el agua pluvial. El objeto de la investigación remediadora es determinar la extensión de la contaminación de sustancias peligrosas en el sitio. La información y los datos obtenidos durante la RI/FS fase de la investigación estarán usados para apoyar la evaluación y selección de las alternativas para la limpieza. Cuando se ha seleccionada una alternativa, el dCAP la describirá. También el Plan de Participación Pública está disponible para su revisión.

El plan explica como Ecología mantendrá involucrada a la comunidad. El plan explica las estrategias que Ecología usarán para mantener el público informado. El periodo de comentario público sobre estos documentos es desde el 13 de enero de 2011 hasta el 14 de febrero de 2011.

Vietnamese

Bộ Môi Sinh (Ecology) tiểu bang Washington kêu gọi quý vị đóng góp ý kiến về Dự thảo Đồng thuận và bản văn Phạm vi Hợp đồng. Cảng Seattle hiện đang là chủ khu đất mà trước đó tại đây là nơi hoạt động của công ty khôi phục chất thiếc MRI. Địa điểm này tọa lạc tại số 6000 West Marginal Way SW., Seattle, Washington. Ngày 2 tháng 12 năm 2010 Cảng Seattle, đã ký Dự thảo Đồng thuận để tiến hành một cuộc Điều tra Phục hồi và Nghiên cứu khả thi (RI / FS) và nộp bản dự thảo Kế hoạch Hành động Dọn dẹp (dCAP).

Qua các mẫu thí nghiệm sơ khởi, người ta tìm thấy trong đất có các chất kim loại và các hydrocacbon thơm đa vòng gây ung thư; trong nguồn nước ngầm có các chất kim loại bao gồm cả thạch tín; hydrocacbon thơm đa vòng, chất bán bay hơi và hydrocacbon dầu và các kim loại trong cặn bùn ở cống nước mưa. Mục đích của việc cuộc Điều tra Phục hồi và Nghiên cứu khả thi là để xác định mức độ các chất độc hại tại địa điểm này. Thông tin và dữ liệu thu được trong giai đoạn nghiên cứu này sẽ được sử dụng để hỗ trợ việc đánh giá và lựa chọn giải pháp dọn dẹp. Sau khi một phương thức dọn dẹp được lựa chọn, nó sẽ được mô tả trong bản dự thảo Kế hoạch hành động Dọn Sạch (dCAP).

Bản Kế hoạch Công chúng Tham gia hiện đang có sẵn để công chúng duyệt qua và trong đó Ecology sẽ giải thích cách thức thu nhận các sự đóng góp của cộng đồng. Kế hoạch sẽ được phác thảo và mô tả các phương pháp tiếp cận mà Ecology sẽ sử dụng. Thời kỳ góp ý phê bình cho các tài liệu này là từ 13 tháng 1 năm 2011 đến hết ngày 14 tháng 2 năm 2011.

Chinese

華盛頓州生態署 (生態署) 邀請大眾對草擬同意命令和整治工作計劃提供建議。西雅圖港務局擁有前為MRI錫金屬回收公司的整治工地。本整治工地位6000 West Marginal Way, SW,華盛頓州,西雅圖市。西雅圖港務局在2010年12月2日簽署同意命令來進行整治調查工作和可行性研究並呈繳草擬整治工作計劃 (dCAP)

初期採樣發現土壤裡有重金屬和可致癌多環碳氫化合物；地下水含有砷,可致癌多環碳氫化合物,半揮發和潤滑油類碳氫化合物；工地雨水微粒含有重金屬。本調查工作目的在研判污染物種類和污染程度。所有資料和採樣結果將用於評估選擇整治工作進行方針。所選擇的進行方針將會詳列在草擬整治工作計劃 (dCAP)內。

民眾也可同時閱覽大眾參與計劃。本計劃描述生態書將如何確保民眾參與的大綱和方式。民眾對者些文件提供建議期間從2011年1月13日開始到2011年2月14日截止。若需任何中文消息請跟林昊聯絡。 電話：425-649-7187 電子信箱：lin461@ecy.wa.gov。