

Interim Cleanup Plan and SEPA Documents Available for Public Comment

The Department of Ecology (Ecology) and the Port of Ridgefield (port) are planning to complete an interim (partial) cleanup action for the Pacific Wood Treating site. The site is located at 111 West Division Street in Ridgefield. Two documents are available for review and comment at the locations listed to the right:

- **Draft Interim Action Work Plan**—Describes the proposed interim action tasks.
- **State Environmental Policy Act (SEPA) Checklist and Determination**—Describes the potential environmental impacts of the cleanup work. Ecology reviewed the proposed interim cleanup actions and determined they were not likely to have significant negative environmental impacts (a Determination of Non-Significance).

Ecology Wants Your Comments!

Ecology is accepting comments on the SEPA documents from **April 25 - May 9**. Comments on the Interim Action Work Plan and CAMU-eligible waste determination (see box on page 2) will be accepted from **April 25 - May 25**. The box to the right shows document review locations and where to submit comments.

Interim Cleanup Actions Proposed

This work is part of a 2001 legal agreement (Agreed Order) to clean up the site. The port has already taken several interim actions to remove contamination.

Now the port is planning interim actions in two areas or “cells.” It will:

- Remove contaminated soil from 3 areas within cells 1 and 2 (see map on page 3). These areas will be filled with clean soil.
- Send contaminated soil as CAMU-eligible waste to an off-site hazardous waste landfill (see box on page 2).
- Decommission the steam injection treatment system (see page 2). The port will use the system to remove some remaining contamination. Then system piping, injection wells and groundwater extraction system will be removed.
- Remove existing buildings, concrete pads and rail lines. Remove and replace the stormwater collection system. Remove or modify existing monitoring wells.

**Comments Accepted
on
SEPA Documents
April 25 thru May 9, 2011**

**Interim Action Work Plan
April 25 thru May 25, 2011**

Submit Comments and Technical
Questions to:

Craig Rankine, Site Manager
WA Department of Ecology
Vancouver Field Office
2108 Grand Blvd.
Vancouver, WA 98661
Phone: (360) 690-4795
E-mail: Craig.Rankine@ecy.wa.gov

Public Involvement Questions:

Diana Smith
Phone: (360) 407-6255
E-mail: Diana.Smith@ecy.wa.gov

DOCUMENT REVIEW LOCATIONS

Ridgefield Library
210 N. Main Avenue
Ridgefield, WA 98642
(360) 887-8281

**WA Department of Ecology
Southwest Regional Office**
300 Desmond Drive SE
Lacey, WA 98503
By appointment only:
Contact Debbie Nelson,
Debbie.Nelson@ecy.wa.gov or
(360) 407-6365

Ecology's Toxics Cleanup Web site
http://www.ecy.wa.gov/programs/tcp/sites/pacWoodTreat/pacWoodTreat_hp.html

Facility Site ID #: 1019

- Place a 2-3 foot thick soil cover over cells 1 and 2. Planting will help stabilize the soil cover.
- Place an environmental covenant (deed restriction) on the property to protect people from contamination remaining on site.

Waste Disposal Determination

Ecology has determined that contaminated soil from the site is Corrective Action Management Unit (CAMU)-eligible waste under the federal Resource Conservation and Recovery Act. This means these soils can be disposed of off-site at a designated hazardous waste landfill. This proposed determination is available for public review and comment.

See Appendix A of the Interim Action Work Plan for the list of contaminants in the soil and the levels to which they must be treated.

What is Steam Injection Treatment?

Polluted soil and groundwater are heated with steam to help remove chemicals from the ground through collection wells. After contamination is removed from collected water, the clean water is released to Lake River under a discharge permit. Recovered contamination is sent off-site for disposal.

As of March 2011, the system has removed over 24,700 gallons of contamination, destroyed 1,291,080 pounds of contaminated sludge and treated over 109 million gallons of contaminated water.

What Happens Next?

Ecology will review and consider all public comments. Ecology may, if necessary, ask the port to make changes to the work plan based on public comments, even after the work has begun.

The port may begin work on the interim actions at the end of the SEPA comment period on May 9. Work will continue through fall 2012. The port will also complete additional investigations and assess the feasibility of different options for final cleanup.

Site Background

From 1964-93, Pacific Wood Treating operated on the site. It pressure-treated wood products with oil-based treatment solutions containing creosote, pentachlorophenol (PCP), and a water-based mixture of copper, chromium and arsenic.

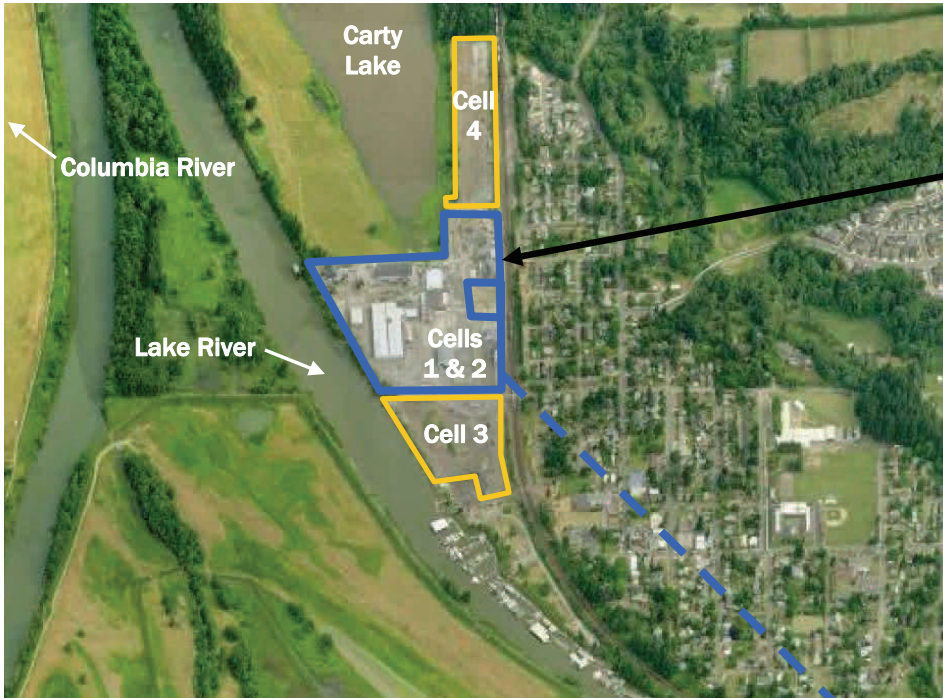
In 1993, the company declared bankruptcy and left behind a legacy of contamination in both soil and groundwater. Wood-treating contaminants had moved in groundwater off the property and into the neighboring Ridgefield National Wildlife Refuge.

Department of Ecology Cleanup

In 1996 and 2001, Ecology and the port entered into Agreed Orders to clean up contamination on the property, in the refuge and in the river. Cleanup actions have shrunk and contained the plume so that it no longer impacts the national wildlife refuge. Cleanup actions taken to date include:

- Using steam injection treatment to remove contamination from soil and groundwater.
- Removing over 100 tons of solid waste and 1,222 tons of hazardous waste, and covering cells 3 and 4 of the site with a soil cover.
- Dismantling several structures and the tank farm.

Ecology has contributed over \$50 million for cleanup through grants and loans funded by the State and Local Toxics Control Accounts.



Interim Action Area—Cells 1 & 2

Legend	
Interim action location	
Soil removal areas	
Buildings to be demolished	
Monitoring wells	
Soil cover (2 feet thick)	
Soil cover (3 feet thick)	
Steam injection treatment system buildings	
Sewage treatment plant	






DEPARTMENT OF
ECOLOGY
State of Washington

PO Box 47775

Olympia, WA 98504-7775

 Please recycle.

Pacific Wood Treating Clark County, WA

Ecology seeks public comment on a partial cleanup and SEPA determina- tion

Interim Action Work Plan

Public Comment Period:

April 25 – May 25, 2011

SEPA Document

Public Comment Period:

April 25 – May 9, 2011

Facility Site ID #: 1019

If you need this publication in an alternative format, call reception at (360) 407-6300. Persons with hearing loss, call 711 for Washington Relay Service. Persons with speech disability call 877-833-6341

Why Cleanup Matters

The Pacific Wood Treating site was contaminated with wood-treatment solutions containing creosote, pentachlorophenol, copper, chromium and arsenic. This posed a threat to human health and the environment, including the Ridgefield National Wildlife Refuge, which borders the site to the north. The Port of Ridgefield plans to finish cleanup and site restoration.

To be removed from the mailing list:

Contact Diana Smith, Public Involvement Coordinator at Diana.Smith@ecy.wa.gov or (360) 407-6255.