



DEPARTMENT OF  
**ECOLOGY**  
State of Washington

To ask about available formats for the visually impaired call 360-407-7472. Persons with hearing loss can call 711 for Washington Relay Service. Persons with a speech disability can call 877-833-6341.

Publication No. 11-10-019erratum1

## **Erratum Whatcom, Squalicum and Padden Creeks Temperature Total Maximum Daily Load Water Quality Improvement Report**

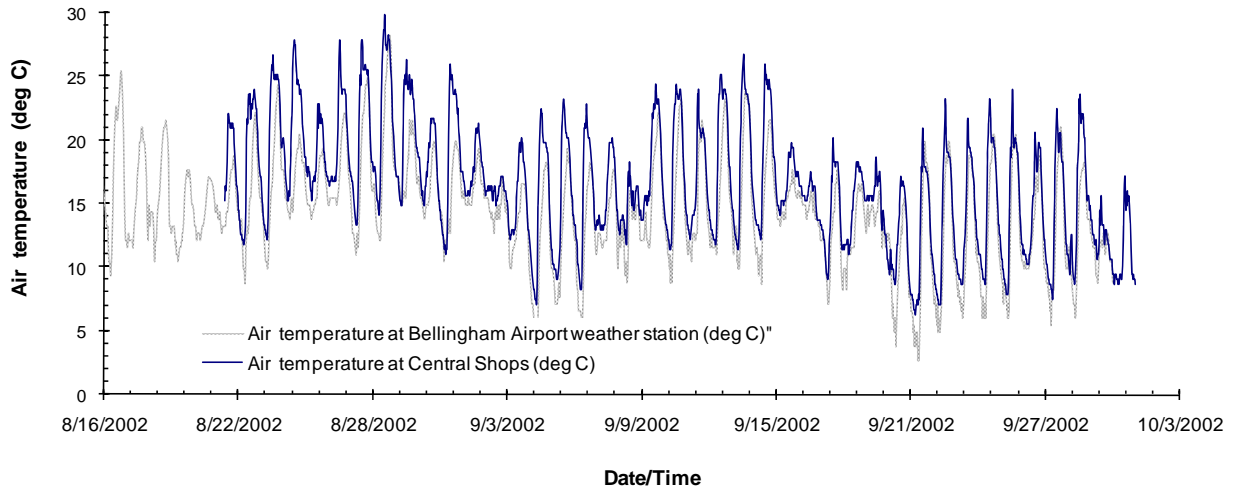
### **Figures 18, B-2, and B-3**

- a) During the process of converting the document from WORD to Acrobat PDF, the graph and graph text of Figure 18 failed to appear (page 41).
- b) During the process of converting the document from WORD to Acrobat PDF, all figures, figure text, and text on the page for Figures B-2 and B-3 failed to appear (pages B-89 and B-90).

This Erratum identifies only the errors described. **These errors were corrected in the online version of the document, [www.ecy.wa.gov/biblio/11100019.html](http://www.ecy.wa.gov/biblio/11100019.html).**

These errors do not affect the conclusions and recommendations of the TMDL water quality improvement report.





**Figure 18. Air temperature at the Central Shops station and at the Bellingham Airport meteorological station during end of August to September 2002.**

Meteorological data relevant to the Whatcom Creek stream temperature model were investigated for long-term statistics. Data used for this analysis were from the Bellingham Airport weather station (data available: 01/1949 – 01/2004). Sources of the data were Pacific Northwest EarthInfo Inc. meteorological data CD purchased by Ecology (data from 01/1949 to 06/2001), and the University of Washington Atmospheric Sciences Department webpage (data from 06/2001 to 01/2004), [www-k12.atmos.washington.edu/k12/grayskies/nw\\_weather.html](http://www-k12.atmos.washington.edu/k12/grayskies/nw_weather.html).

The highest daily maximum temperature and the highest 7-day average of daily maximum air temperature were selected for each year and were used to determine the median and the 90<sup>th</sup> percentile conditions. Fifty-six years of data were used for this statistical analysis summarized in Table 6.



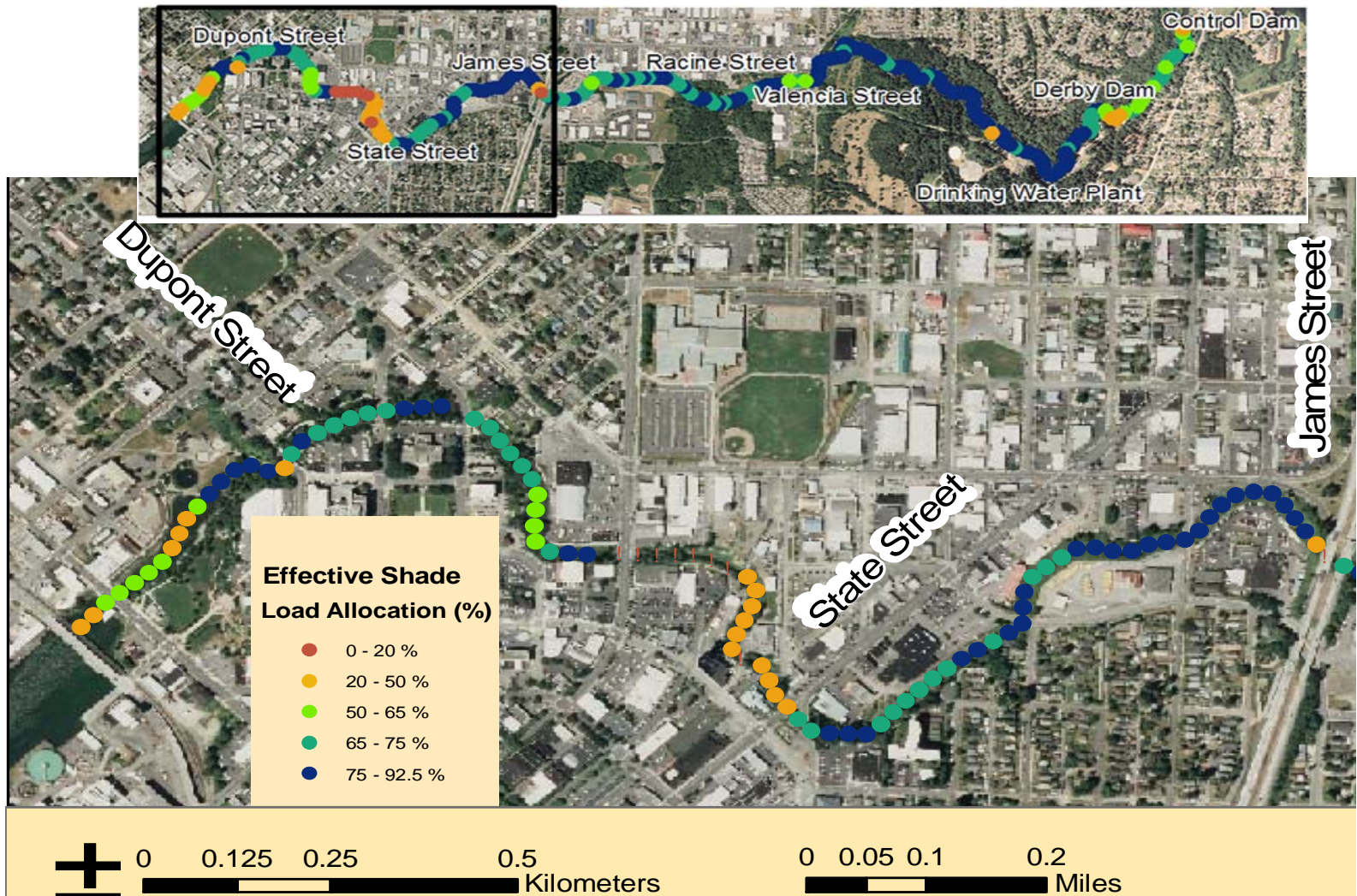


Figure B-2. Effective Shade load allocations for Whatcom Creek: Mouth to James Street.

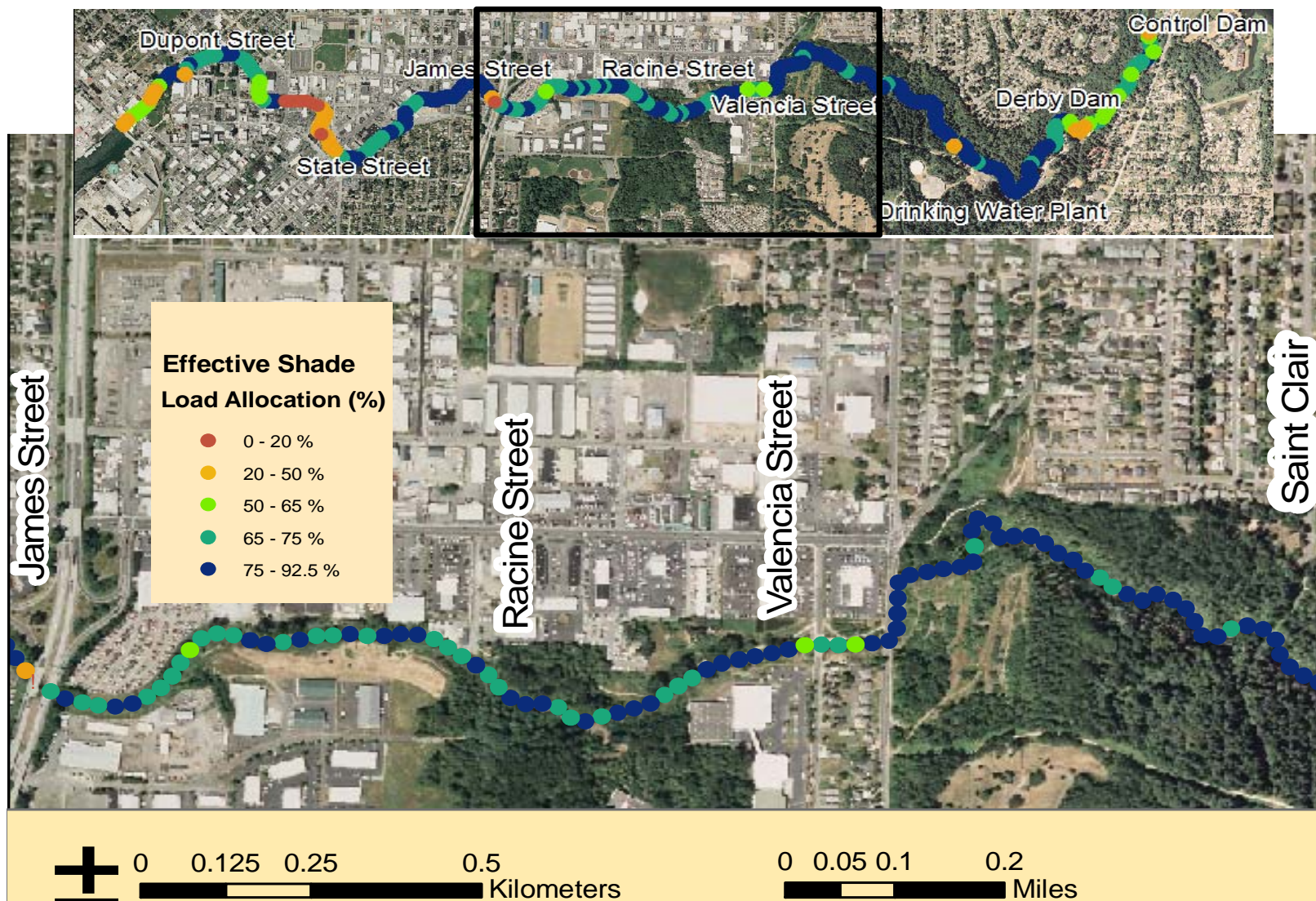


Figure B-3. Effective Shade load allocations for Whatcom Creek: James Street to Saint Clair.