

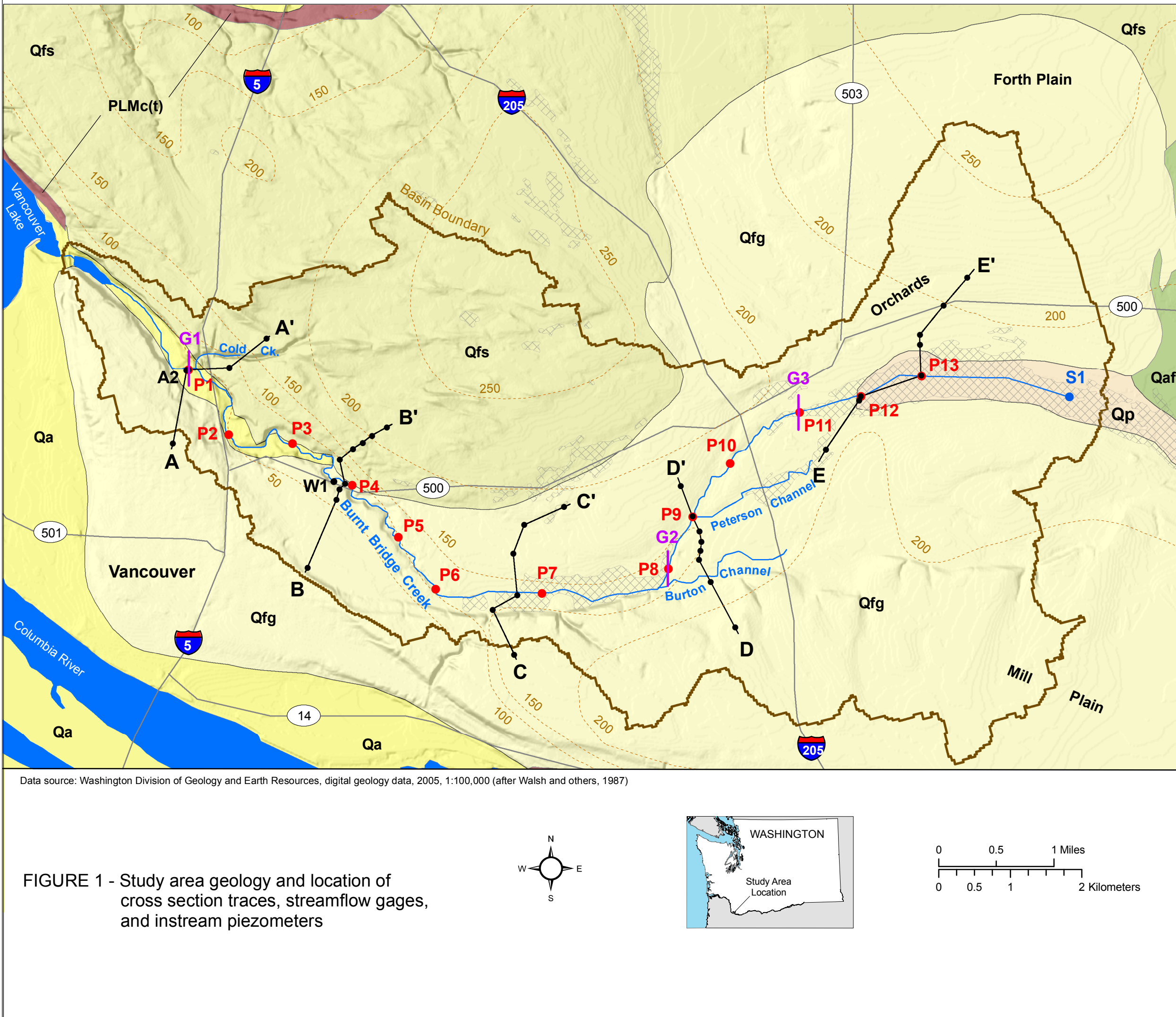
**FIGURE 2 - In-stream piezometer and off-stream well thermographs by map ID (see symbol explanations at right)**

- Positive vertical hydraulic gradient (groundwater discharge to stream indicated)
- No measurable gradient
- Negative vertical hydraulic gradient (streamflow loss to groundwater indicated)

Note: Hollow gradient symbols indicated estimated values. See Appendix B, Table B4 for additional information about individual gradient results.

■ Upper streambed thermistor above the piezometer water level during this period  
 ■ Upper and middle streambed thermistors above the piezometer water level during this period  
 ■ All streambed thermistors above the piezometer water level during this period

\* NOTE: To accommodate graph scale limitations the streamflow values shown here depict only 10 percent of the actual daily mean streamflow measured at the Burnt Bridge Creek gaging station at 2nd Avenue. To obtain the actual gaged flow multiply the values shown here by 10.

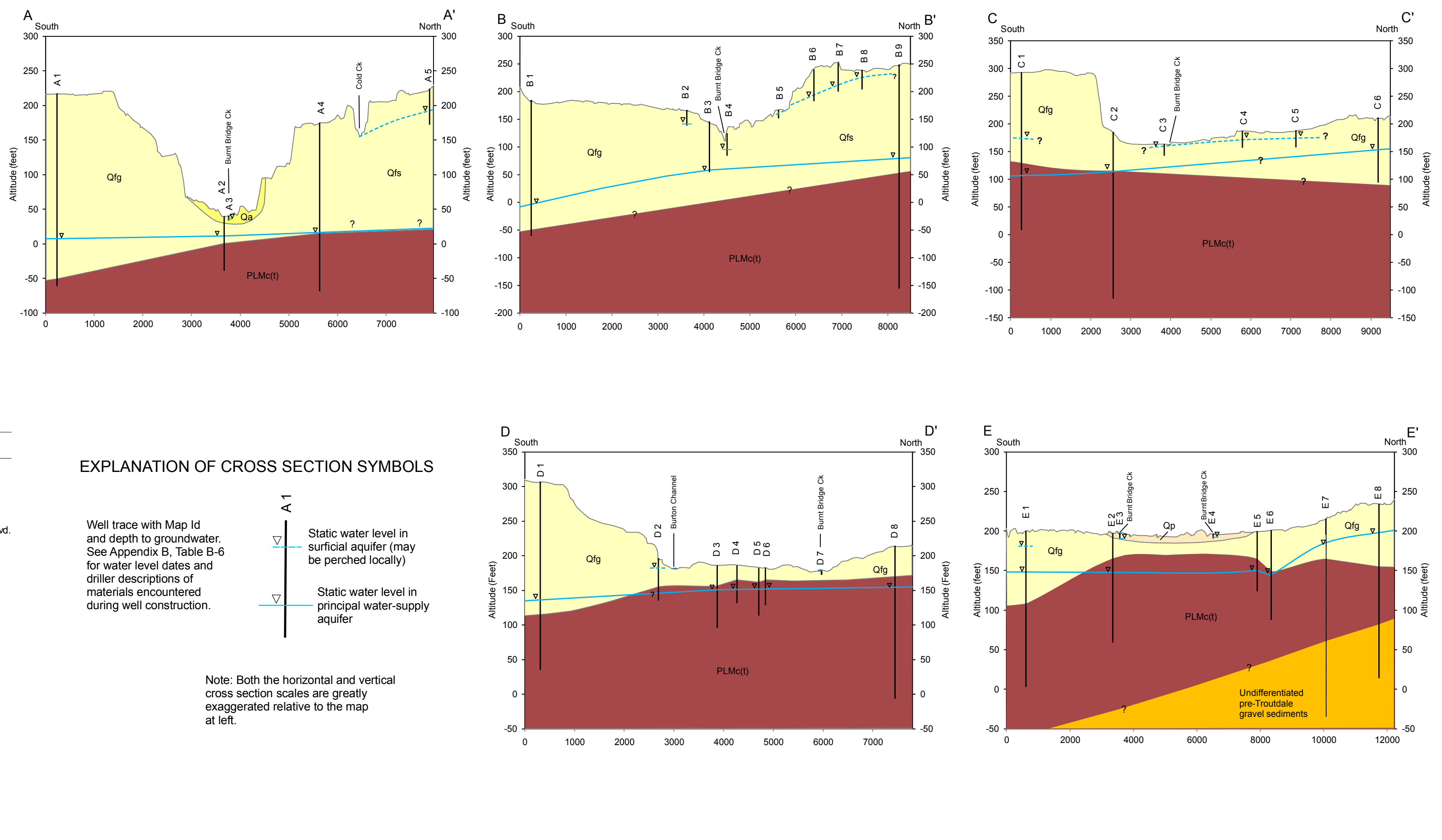


**FIGURE 1 EXPLANATION**

- G1 Streamflow gaging station (with map ID)
  - P1 In-stream piezometer (with map ID)
  - Well used in geologic cross section
  - A-A' Trace of geologic section
  - 250 Groundwater level contours for the unconsolidated sedimentary aquifer, spring 1988 (altitude in feet) (after McFarland and Morgan, 1996)
  - Poorly drained soils
- Surficial Geologic Units**
- Qa (Alluvium)
  - Qp (peat deposits)
  - Qaf (Alluvial fan deposits)
  - Qfs (Outburst flood sands and silts)
  - Qfg (Outburst flood gravels)
  - PLM(t) (Troutdale formation gravels)

Map ID	Well Tag ID	Approximate River Mile	Site Location
<b>In-stream Piezometers</b>			
P1	AKY455	1.6	Burnt Bridge Ck. at 2 <sup>nd</sup> Ave.
P2	AKY456	2.6	Burnt Bridge Ck. at Leverich Park
P3	AKY465	3.4	Burnt Bridge Ck. at 41 <sup>st</sup> Circle
P4	AKY466	4.3	Burnt Bridge Ck. at Saint Johns Blvd.
P5	AKY468	5.2	Burnt Bridge Ck. at Rosser Lane
P6	AKY464	5.9	Burnt Bridge Ck. at 18 <sup>th</sup> St.
P7	AKY463	7	Burnt Bridge Ck. at Burton Rd.
P8	AKY462	8.4	Burnt Bridge Ck. near Burton Rd.
P9	AKY461	8.8	Burnt Bridge Ck. at 93 <sup>rd</sup> Ave.
P10	AKY460	9.5	Burnt Bridge Ck. at 98 <sup>th</sup> Ave.
P11	AKY459	10.4	Burnt Bridge Ck. at 110 <sup>th</sup> Ave.
P12	AKY458	10.8	Burnt Bridge Ck. at 121 <sup>st</sup> St.
P13	AKY457	11.4	Burnt Bridge Ck. at 131 <sup>st</sup> St.
<b>Off-Stream Wells</b>			
A2	AHT045	1.6	02N01E-15B
W1	APJ519	4.2	02N01E-24D
<b>Headwater Seepage Face</b>			
S1	--	12.8	Burnt Bridge Ck. at 162 <sup>nd</sup> Ave.
<b>Streamflow Gages</b>			
G1	--	1.6	Burnt Bridge Ck. at 2 <sup>nd</sup> Ave.
G2	--	8.4	Burnt Bridge Ck. at Burton Rd.
G3	--	10.4	Burnt Bridge Ck. at 110 <sup>th</sup> Ave.

**Geologic sections A-A' through E-E'**



**EXPLANATION OF CROSS SECTION SYMBOLS**

- ▽ Static water level in surficial aquifer (may be perched locally)
  - ▽ Static water level in principal water-supply aquifer
- Note: Both the horizontal and vertical cross section scales are greatly exaggerated relative to the map at left.

**STUDY WELL LOCATIONS, WELL THERMOGRAPHS, GEOLOGIC CROSS-SECTIONS, AND NEAR-STREAM GROUNDWATER LEVELS ALONG BURNT BRIDGE CREEK, CLARK COUNTY, WASHINGTON**