

# Frequently Asked Questions

Toxics Cleanup Program

August 2012

## Cleanup Beginning This Summer



**A PUGET SOUND INITIATIVE site**

**Reaching the goal of a healthy, sustainable  
Puget Sound now and forever!**

The Department of Ecology (Ecology) will do cleanup and restoration at the Former Irondale Iron and Steel site this summer. The site is located at 526 Moore Street in Irondale.

### Site Background

Iron and steel were produced intermittently at the site from 1881 to 1919 by various owners. Plant operations contaminated portions of the site soil, sediment or groundwater with arsenic, copper, iron, lead, nickel, zinc and carcinogenic polycyclic aromatic hydrocarbons.

Ecology has been working to investigate and clean up the site since 2001. The Governor's Puget Sound Initiative, an effort to restore the Sound by 2020, is funding the cleanup.

Ecology is timing work to take place when it will least affect fish, as well as so that we can do cleanup and restoration at the same time. This means in-water work will start in mid-August 2012.

This document provides answers to questions about the cleanup process. Visit Ecology's website or contact a staff person for more information (see box to the right). We will also post updates on Ecology's blog at <http://ecologywa.blogspot.com/>

### **Q: How will Ecology clean up the site?**

**A:** Ecology will do the following:

- Remove contaminated soil and sediments (see map on page 3).
- Install a geotextile and soil cap (cover) to prevent exposure to contaminated soil remaining on site
- Remove slag material—a byproduct of metal smelting—and restore the areas where soil was removed.
- Restore the beach between the former plant and the Chimacum Creek restoration site (see map on page 3).

### **FOR MORE INFORMATION**

#### **Site Cleanup**

Steve Teel, Site Manager  
Southwest Regional Office  
PO Box 47775  
Olympia, WA 98504-7775  
(360) 407-6247  
[Steve.Teel@ecy.wa.gov](mailto:Steve.Teel@ecy.wa.gov)

#### **Public Involvement**

Michael Bergman  
Public Involvement Coordinator  
Phone: (360) 407-0067

#### **Park Information**

Matt Tyler, Parks Manager  
Jefferson County Parks and  
Recreation  
623 Sheridan Street  
Port Townsend, WA 98368  
Phone: (360) 385-9129  
[mtyler@co.jefferson.wa.us](mailto:mtyler@co.jefferson.wa.us)  
[www.countyrec.com](http://www.countyrec.com)

#### **Site Document Locations**

Ecology's Cleanup website

[https://fortress.wa.gov/ecy/gsp/  
Sitepage.aspx?csid=4484](https://fortress.wa.gov/ecy/gsp/Sitepage.aspx?csid=4484)

WA Department of Ecology  
Southwest Regional Office  
300 Desmond Drive SE  
Lacey, WA 98503  
By appointment only:  
Contact Debbie Nelson,  
[Debbie.Nelson@ecy.wa.gov](mailto:Debbie.Nelson@ecy.wa.gov) or  
(360) 407-6365

**FS ID #95275518**

**Q: How will the cleanup affect me? Can I use the park?**

**A:** During this summer's cleanup work, you will not be able to use the Irondale Beach Park. However you will be able to use the Chimacum Creek beach area to the north of the cleanup site (green area on map). The park will re-open after the cleanup is complete. For re-opening information contact the Jefferson County Parks and Recreation (see contact information on page 1).

Nearby residents and beach visitors may notice work noise from 7 am to 7 pm.

**Q: How long will the cleanup take?**

**A:** The cleanup should be done within two to four months. Ecology is timing cleanup for when it will least impact fish habitat. This "fish window" runs from July through October. Work upland of the beach may continue after October, that is, after the fish window is closed.

**Q: What will Ecology do to restore the beach ?**

**A:** Beach restoration will provide long-term benefits for salmon and other fish, and birds that use Irondale Beach Park. Ecology will:

- Remove old fill material, sand, between the former plant and the Chimacum Creek site. New beach will be created in this area (red and blue areas on map).
- Use clean sand removed from the area between the former plant and the Chimacum Creek site to backfill areas where contaminated soil was removed (yellow area on map).
- Place large woody debris, such as logs and stumps, on the new shoreline to create backshore (beach) habitat (blue area on map).
- Plant upland areas with native shrubs and trees, and new shoreline habitat with American dune-grass.
- Remove invasive, non-native plants.

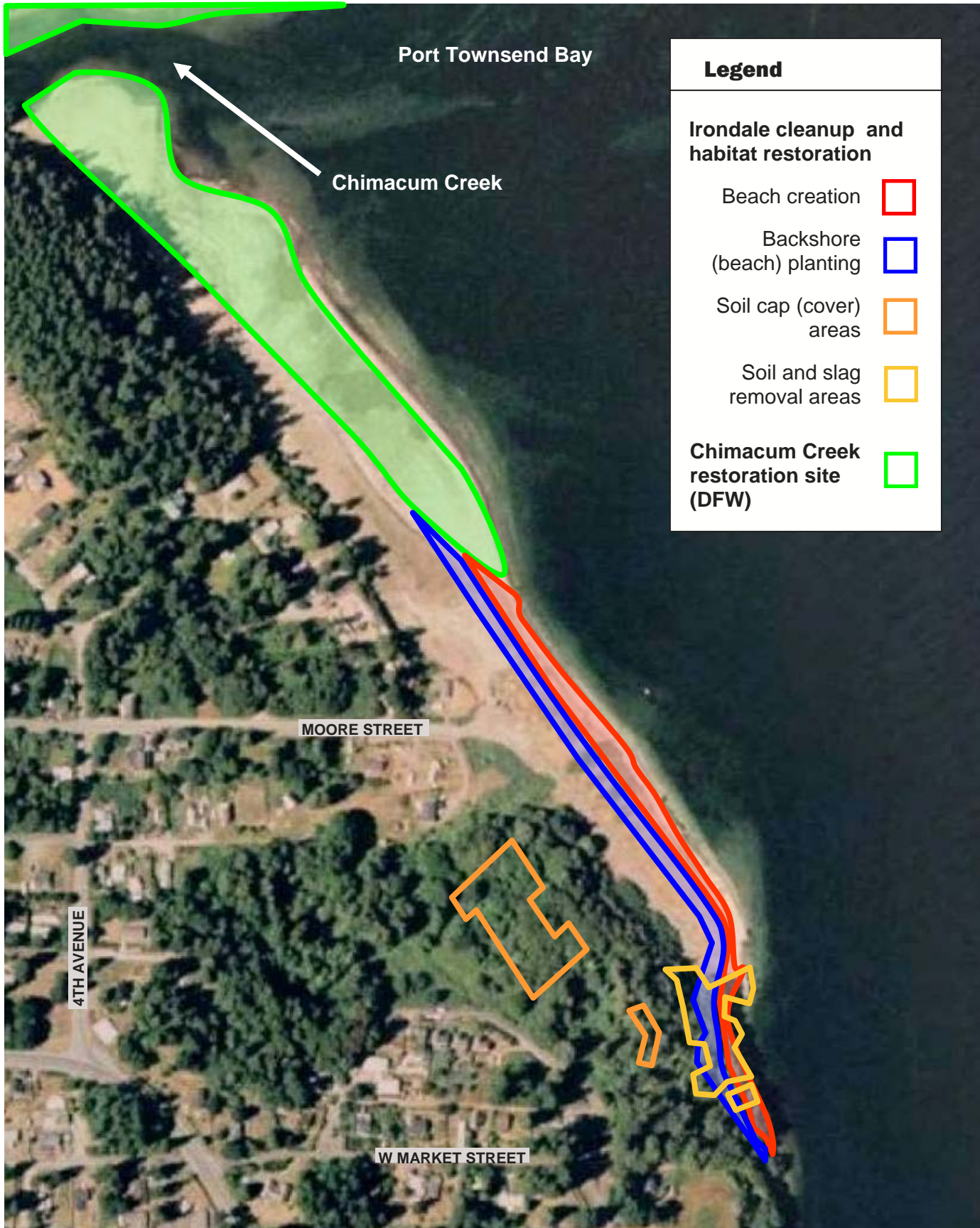
**Q: How will Ecology make sure contamination does not spread during cleanup?**

**A:** To minimize the spread of contamination, Ecology will use these and other best practices:

- Use sheet pile (retaining) walls, silt (barrier) curtains, and absorbent booms while removing contaminated sediments.
- Use a silt fence in upland areas.
- Control dust by spraying water while removing contaminated soil.

**Q: How can I find out more about the site history and planned cleanup?**

**A:** Ecology will post updates about cleanup and restoration progress on our website and blog (see page 1). For more information about the site history, visit Ecology's website or contact Michael Bergman (see box on page 1) for older fact sheets. You can also contact Steve Teel (see box on page 1) for technical questions and additional information about site cleanup.





DEPARTMENT OF  
**ECOLOGY**  
State of Washington

PO Box 47775  
Olympia, WA 98504-7775

---

## **Former Irondale Iron and Steel Jefferson County, WA**

### **Construction Update for Cleanup Actions**

Facility Site ID #95275518

If you need this publication in a format for the visually impaired, call reception at (360) 407-6300.

Persons with hearing loss, call 711 for Washington Relay Service. Persons with a speech disability call 877-833-6341.

### **Why Cleanup Matters**

Decades of industrial, municipal and naturally occurring pollution have damaged the quality and ecology of Puget Sound. In 2007, Governor Gregoire and the Washington State Legislature approved the Puget Sound Initiative to protect and restore the health of the Sound by 2020.

**One of the Initiative's objectives is to clean up contaminated sites within one-half mile of Puget Sound.** The Former Irondale Iron and Steel cleanup will help reduce pollution and restore habitat and shorelines in Puget Sound.

### **To be removed from the mailing list:**

Contact Michael Bergman, Public Involvement Coordinator, at [Michael.Bergman@ecy.wa.gov](mailto:Michael.Bergman@ecy.wa.gov) or (360) 407-0067.