

### Toxics

## Agreed Order to Investigate Contamination and Study Cleanup Options

Washington State Department of Ecology (Ecology) and King County (County) are entering into a legal agreement to investigate contamination on the Maury Island Open Space site, formerly Northwest Aggregates' Maury Island property. Specifically, the Agreed Order will require the County, the current owner, to complete the following:

- A full Remedial Investigation (RI) of the nature and extent of contamination.
- A Feasibility Study (FS) to examine possible cleanup options.
- A draft Cleanup action plan to outline the best cleanup alternative.

### Ecology Wants Your Input!

Ecology is asking for your comments on the Agreed Order and Public Participation Plan (see page 2). You are invited to:

- **Review** the Agreed Order and Public Participation Plan (locations to the right).
- **Send** your comments to Ecology for consideration. **Comments will be accepted November 12 through December 17, 2012.**

### What Happens Next?

- Ecology will review all comments and respond to them at the end of the comment period.
- If necessary, changes will be made to the Agreed Order or Public Participation Plan.
- Ecology will hold another comment period for the RI/FS report and draft Cleanup Action Plan.

### Site Location

The 250-acre Property is located on the southeast side of Maury Island. The Property is bordered on the southeast by the Puget Sound and the north by SW 260th Street.

The surrounding land is characteristically forested with some rural residential properties and small residential communities. The County and privately owned vacant forest lands are situated to the northwest and west of the Property.

### Background

Since the 1940s, Northwest Aggregates (NWA), and other owners operated a sand and gravel mine on the property. From 1968 to 1978,

### Comments Accepted

**November 12 -  
December 17, 2012**

#### Comments and Technical Questions:

Ron Timm  
Site Manager  
Washington Department of Ecology  
Northwest Regional Office  
3190 160th Avenue SE  
Bellevue, WA 98008  
Phone: (425) 649-7185  
E-mail: Ronald.Timm@ecy.wa.gov

#### Public Involvement:

Meg Bommarito  
Phone: (425) 649-7256  
E-mail: Meg.Bommarito@ecy.wa.gov

#### Document Review Locations

**Vashon Library**  
17210 Vashon Highway SW  
Vashon Island, WA 98070  
Phone: (206) 463-2069

#### Department of Ecology

Northwest Regional Office  
3190 160th Avenue SE  
Bellevue, WA 98008  
By appointment only, call (425) 649-7190

#### Ecology's Toxics Cleanup Web Site

<https://fortress.wa.gov/ecy/gsp/Sitepage.aspx?csid=1532>

**Facility Site ID #2901216**

## Maury Island Open Space (aka Northwest Aggregate Maury Island)

sand and gravel from this operation were used on various construction projects in King County. The Mine was then placed in reserve while NWA focused on mining on other properties in Washington. Periodically during this time, NWA or someone leasing the property removed sand and gravel from the Mine for use at various construction projects on Maury and Vashon Islands and King County.

The amount of and exact location of mining activities varied throughout the years. Mining on the property has been very limited during the last several years.

The County acquired the property late in 2010. The purchase ended a 13-year effort by the previous owner, CalPortland, to expand a gravel mining operation at the site. The site will become an open space park area, managed to conserve its ecological values and provide passive recreation opportunities.

### Contamination

The surface soils on Maury Island were impacted by former Tacoma Smelter operations and are contaminated with metals. From 1890 until it closed in 1985, the Asarco facility refined copper from copper-bearing ores and concentrates that were shipped in from other locations.

During operation, the smelter's smoke stack released, metals, particularly arsenic and lead. These metals settled over a 1,000 square-mile area (plume) including Maury and Vashon Islands.

As a result of this, surface soils within the Tacoma Smelter Plume area contain arsenic and lead concentrations that are many times greater than natural background concentrations.

According to Ecology's prior area-wide investigations, the soils on Maury Island are among those most significantly impacted within the Tacoma Smelter Plume.

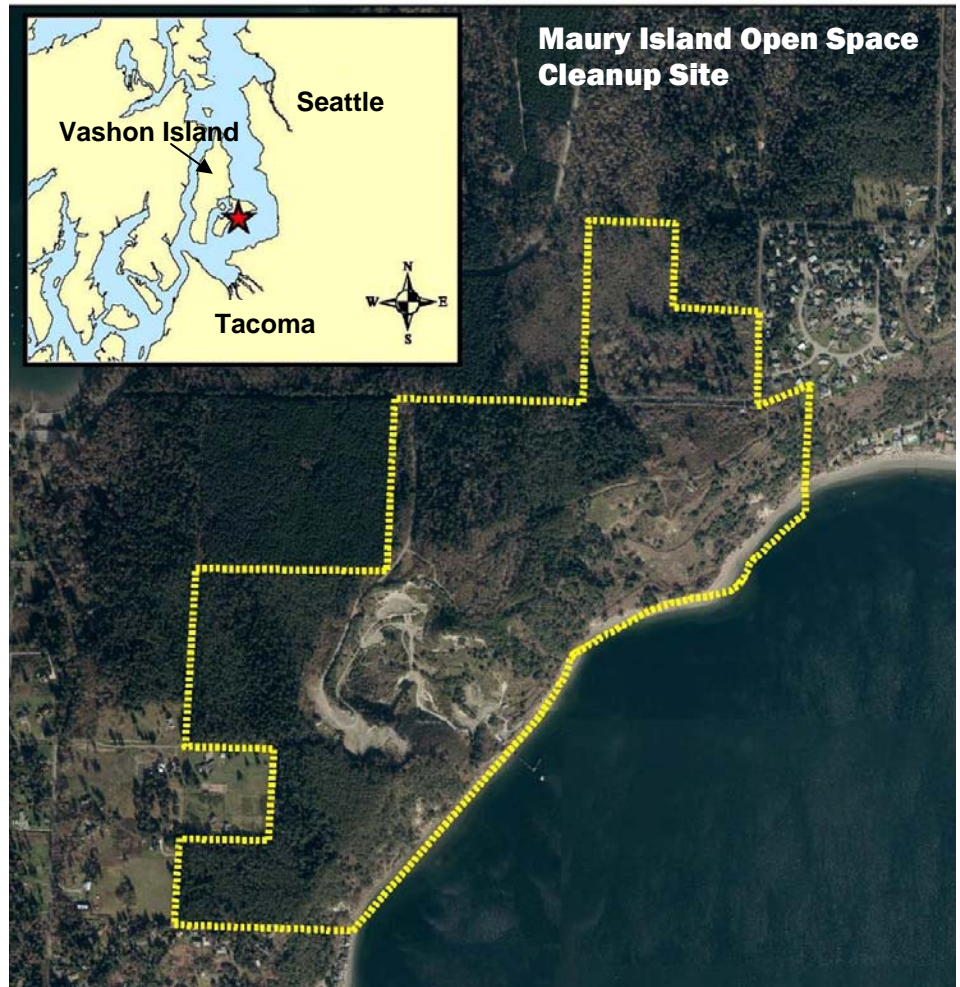
### What is the Public Participation Plan?

The Public Participation Plan is an Ecology document that outlines how the public will be informed and involved in the investigation and cleanup process.

The document contains information about:

- Methods and tools that Ecology will use to inform and involve the public
- Points during the investigation and cleanup process where there are opportunities for public involvement
- Contact information
- Where to find more information
- Site background and current status.

This document will be posted on Ecology's website and updated when needed.



## **Protect You and Your Family from Contamination!**

Arsenic and lead are harmful and may pose a long-term health risk. Arsenic can cause cancer and has been linked to several other health problems including heart disease and diabetes. Lead can cause behavioral problems, learning disabilities and reduce physical growth.

Arsenic and lead are not well absorbed through the skin. However, they can get into your body if you swallow small amounts of soil by eating with dirty hands or putting dirty fingers in your mouth. You can also be exposed if you inhale dust or dirt contaminated with lead or arsenic. **Young children are more vulnerable than adults.** They normally put their fingers and other things in their mouths, even if there is dirt or dust on them. Also, children are still growing so they are more sensitive than adults to contamination.

**Ecology and the Washington Department of Health recommend that you take the actions listed below to protect your family from contamination. These actions should be taken if you visit the Maury Island Open Space park.**



**Wash your hands well before eating and after working or playing in the soil. Use a scrub brush to clean dirt from under your nails.**



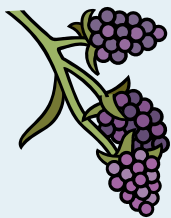
**Keep pets clean. Wipe off excess dirt and mud before your pet comes inside. Brush and bathe your pet often.**



**Take your shoes off in the house so you don't track dirt in from outside.**



**Use caution if working or playing in or riding on soil. Wear gloves and wash dirty clothes separately.**



**Wash fruits picked at the site before you eat them to remove soil that may be on the surface.**



### **NEED MORE INFORMATION?**

- 1. Arsenic and lead health concerns - Contact Department of Health at 1-877-485-7316 (Toll free) or visit <http://www.doh.wa.gov/ehp/oehas/pubs/arsenic.pdf>.**
- 2. Tacoma Smelter Plume Cleanup - Visit Ecology's website at [http://www.ecy.wa.gov/programs/tcp/sites/tacoma\\_smelter/ts\\_hp.htm](http://www.ecy.wa.gov/programs/tcp/sites/tacoma_smelter/ts_hp.htm)**
- 3. King County Parks and Recreation - Contact Connie Blumen at (206) 263-6371 or visit <http://www.kingcounty.gov/recreation/parks/naturalresources/naturallands/mauryislandsite.aspx>**



DEPARTMENT OF  
**ECOLOGY**  
State of Washington  
3190 160th Street SE  
Bellevue, WA 98008

---

## **Maury Island Open Space Maury Island, WA**

### **Public Comment Period for an Agreed Order**

**Public Comment Period:**  
November 12-December 17, 2012

Facility Site ID #: 2901216

If you need this publication in an alternative format call reception at 425-649-7000. Persons with hearing loss, call 711 for Washington Relay Service. Persons with a speech disability, call 877-833-6341.



Maury Island Open Space park, Maury Island